

JUDSON'S LIVE

TECHNICAL SPECIFICATIONS



Dr. Phillips Center for the Performing Arts

ORLANDO, FL 32801

www.drphillipscenter.org

TABLE OF CONTENTS

GENERAL CONTACT INFORMATION	3
MAP & DIRECTIONS	5
SEATING INFORMATION AND CAPACITY	6
STAGE SPECIFICATIONS	7
HOUSE BACKLINE / INSTRUMENTS	8
SOUND AND COMMUNICATIONS	9
VIDEO INFORMATION	11
LIGHTING INFORMATION	12
DRESSING ROOM / GREEN ROOM INFORMATION	13

ADDRESS & CONTACTS

Dr. Phillips Center for the Performing Arts
155 East Anderson Street, Orlando, Florida 32801

- Administrative Phone 407.839.0119
- Fax Number 407.839.0116
- Box Office 407.358.6603
- Security/Stage Door 407.992.1777

PRODUCTION

A production manager is generally assigned to each visiting production seven (7) weeks out from arrival. S/he will reach out for advancing all needs. Prior to that, inquiries may be sent to **productionmanagement@drphillipscenter.org**, which will reach the entire production management staff.

Production Labor

Judson's Live at the Dr. Phillips Center for the Performing Arts is staffed by in-house technicians. Generally, an A1 and A2 are assigned to all performances.

OTHER CONTACTS

Guest Services Team	fohadvance@drphillipscenter.org
Security Team	security@drphillipscenter.org
Craft Services (Catering)	foodbeveragemanagement@dpc.org



MAP AND DIRECTIONS

The Dr. Phillips Center is conveniently located in Downtown Orlando and can be reached by several routes.

- Main Building Guest entrance: 445 South Magnolia Avenue
- Judon's Live entrance: 160 East South Street
- Administrative offices: 155 East Anderston Street
- Loading dock and cast & crew arrivals: 470 South Rosalind Avenue

VIA WEST ON I-4

- Exit to South Street (Exit 82B)
- Exit curves right
- Right onto South Street
- Right onto Orange Avenue
- Left onto Anderson Street
- Left onto Rosalind Avenue – loading dock is on the left

VIA EAST ON I-4

- Exit to Anderson Street (Exit 82C)
- Left on Anderson Street
- Left onto South Rosalind Avenue – loading dock is on the left

VIA WEST ON 408

- Exit to Orange Avenue/SR-527 (exit 10A)
- At the bottom of the ramp, turn right onto South Lucerne Circle East
- Right onto South Orange Avenue (northbound) – get in the second lane from left
- Loading dock will be on your left after passing under the 408 and past the first light (Anderson St.)

VIA EAST ON 408

- Exit to Rosalind Avenue exit (Exit 11A) – stay in the left lane
- Left onto South Street – drive around the building counter-clockwise
- Left onto Magnolia Avenue – pass under the DPC canopy
- Left onto Anderson Street
- Left onto Rosalind Avenue – the loading dock is on your left

VEHICLE PARKING

Parking on site is limited. Three (3) spaces in a gravel lot behind Judson's Live are available for performers with access to the Loading Dock via steps and a truck ramp. An ADA-accessible ramp is also available with prior advance prior to House opening. Any additional vehicles must be parked off-site.

A truck-height loading dock is available for unloading / loading, but not parking.

All on-site parking arrangements must be discussed with a DPC Production Manager prior to the performance day for necessary passes and badges.

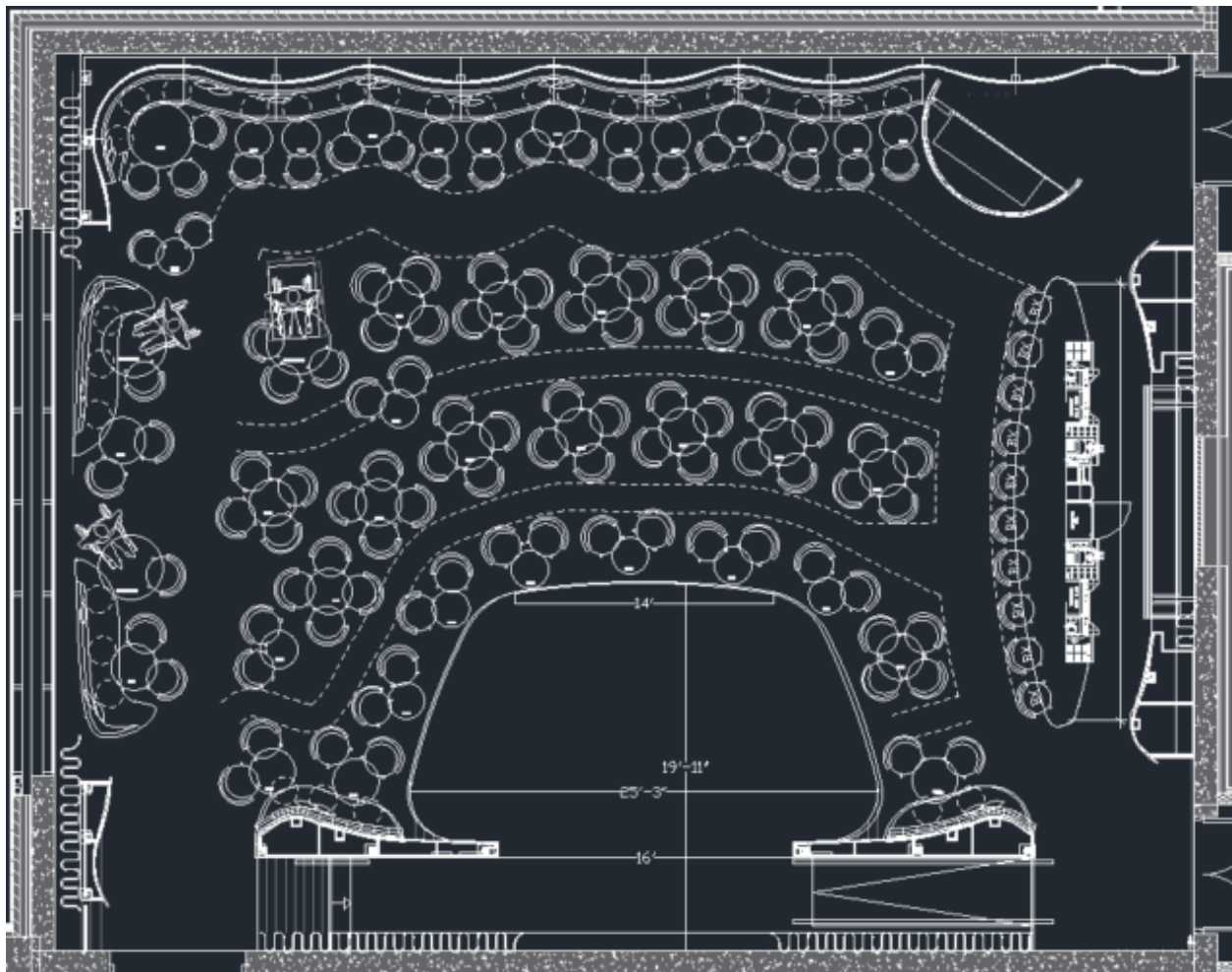
SEATING INFORMATION AND CAPACITY

The maximum capacity of Judson's Live is 200, including staff and performers, as established by the Orlando Fire Department.

Ticketed seating for Judson's Live is set at 140, including ten (10) stools at the bar.

STAGE SPECIFICATIONS

Judson's Live stage is approximately 300 square feet and 12" above audience level. The dimensions of the stage are 25' across at its widest and 14' across the front. It is 14' from downstage center to the 16' wide proscenium arch, and an additional 5' to the upstage wall. Please see the image below for a ground plan of the space. An ADA-accessible ramp provides access from stage right. **NO nails or screws may be drilled into the stage floor.**



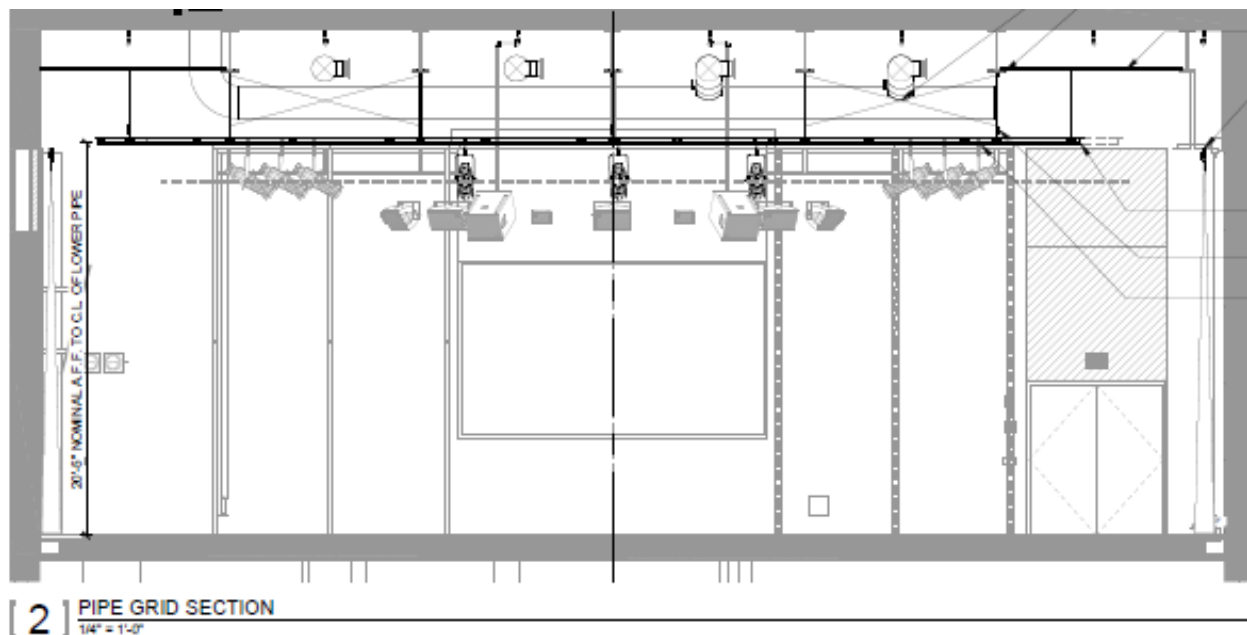
RIGGING SPECIFICATIONS

Judson's Live has a fixed grid system, underhung from facility steel. It is not designed for hanging anything beyond what is installed as the House system.

A curtain is hung across the upstage wall of the stage. It may be opened or closed for acoustical and aesthetic reasons.

A curtain is hung in front of a glass wall on the stage left side of the venue. It may be opened or closed for acoustical or aesthetic reasons. White blinds behind the curtain may be raised or lowered for aesthetic reasons.

JUDSON'S LIVE: CROSS-SECTION



HOUSE BACKLINE / INSTRUMENTS

The instruments and equipment noted below are maintained in-house at the Dr Phillips Center. Verification is required during the Advance process to verify it is available for use on specific performance days in Judson's Live; otherwise, rentals will be required.

Piano & Keyboards

- A 1958 Yamaha C3 Conservatory Grand Piano built in Hamamtsu, Japan.
The piano remains on stage whether in use by the performance or not. It is tuned on a weekly basis.
- A Nord 4, 88-key Stage Piano
- (1) Folding Z Keyboard Stand
- (1) X Stand

Bass

- A ca. 1920s Czech $\frac{3}{4}$ double bass with figured spruce top and highly flamed round back, ribs and scroll is available in house. It includes ebony fittings, adjustable bridge and pickup.
- Aguilar 350W 2x12" Classic Black, 4-Ohm Cabinet
- Aguilar Tone Hammer 700 Super Light Head
- Venture V7 Bass Amp

Guitar

- Fender 65 Dix Rev 22W 1x12 Tube Combo
- Hughes & Kettner ERA 2 Acoustic Amp – Wood

Drums

- Yamaha Absolute Hybrid Maple Drum Kit w/Remo Ambassador Coated Heads
 - 22" Kick Drum
 - 18" Kick Drum
 - (1) Yamaha FP-9C Chain Drive Single Bass Drum Pedal
 - 14"x6" Snare Drum on DW Snare Stand
 - 16" Floor Tom
 - 14" Floor Tom
 - 12" Rack Tom
 - 10" Rack Tom
- (4) Yamaha Cymbal Boom/Straight Stands
- Zildjian K Dry Cymbal Pack (4)
 - 14" Zildjian K Special Dry HiHat (pair)
 - 16" Zildjian K Special Dry Crash
 - 18" Zildjian K Special Dry Crash
 - 21" Zildjian K Special Dry Ride
- Roc-N-Soc Nitro Saddle Throne

SOUND AND COMMUNICATIONS

Judson's Live has a D&B Point Source system made up of five (5) E-12-D Cabinets, in an LCR configuration. Two (2) Bi-6 Subwoofers are hung from the grid, one each just off-stage left and right. Two (2) E6 downfills and two (2) E6 outfills are also hung.

The Front-of-House console is an Allen & Heath Avantis. The Avantis has (1) 128x128 Dante networking card and (1) DX-Link Expansion Card. There are (4) DX-12 I/O units and (1) DX32 I/O Frame, with (4) DX32 Prime input Cards.

The playback system is a Mac Mini M2 Pro with Q-Lab 5, interfaced through a Focusrite Scarlett 2i2.

MICROPHONES

AKG	C414	Large diaphragm Condenser	2
Audix	DP4	4-piece Drum Mic Kit	1
DPA	VO4099-DC-1-101-P	4099 Core Mic, Stereo system for Piano	1
DPA	VO4099-DC-1-199-G	Acoustic Guitar Mic 4099 Core	1
DPA	VO4099-DC-1-201-B	Acoustic Bass Mic, 4099 Core	1
Neumann	KM184-Pair	Small Diaphragm condenser, Pair	2
Neumann	KMS105ni	Handheld Microphone, Vocal condenser	1
Sennheiser	E609-Silver	Dynamic Microphone	1
Sennheiser	MD 421-II	Dynamic Microphone	4
Shure	SM57-LC	Instrument Microphone, Dynamic	6
Shure	SM58-LC	Handheld Microphone, Dynamic	4
Audix	D2	Drum Mic	2
Shure	Beta 58A	Dynamic Mic	2
Ear Trumpet Labs	Nadine	Bass Mic	1
Ear Trumpet Labs	Chantelle	Vocal Mic	1
Shure	SM81	Small diaphragm Condenser	2

WIRELESS

Shure	AD4QUS	Four-Channel Digital Wireless Receiver	1
Shure	ADX1	Bodypack Transmitter	2
Shure	ADS2/SM58/KSM9	Handheld Transmitter, SM58/KSM9 Cartridge	2
Shure	AD610	Showlink Access Point	1
Shure	SB910	Rechargeable Battery for ADX1	6
Shure	SB920	Rechargeable Battery for ADX2	6
Shure	SBRC	Rack-Mount Battery Charger Frame	1
Shure	SBM910	Charging module for SB910	2
Shure	SBM920	Charging Module for SB920	2
Shure	UA834WB	In-Line Antenna Amplifier	2

MONITORING

Judson's Live is equipped with six (6) Channels of the Shure PSM1000 Wireless In-Ear Monitoring System. This is set up for 6 discrete stereo mixes. There are also four (4) D&B E-12D point source speakers for additional monitoring when necessary.

Shure	P10T	PSM1000 IEM Transmitter	6
Shure	P10R	PSM1000 IEM Receiver	6
Shure	SE425	In Ear Monitors	6
Shure	UA874	Active Directional Antenna	1
Shure	SBRC	Rack-Mount Battery Charger Frame	1
Shure	SBM910	Battery Charging Module	4
Shure	SB900B	Rechargeable Lithium-Ion Battery	12
D&B	E12-D	On-Stage Monitor	4
D&B	40D	4 Channel Amplifier for E12-D Monitors	1

INTERCOM / PAGING

Six (6) 2-channel digital, wired HelixNet belt packs are provided in Judson's Live. Two (2) are located at the control booth, three (3) in the Broadcast/Recording control room and one (1) backstage. The HelixNet system can be supplemented with wireless belt packs within the Dr Phillips Center as available.

VIDEO INFORMATION

A roll-down projection screen is located just upstage of the proscenium arch. The projection surface is 8'-5" high and 15'-0" wide. A permanently mounted Epson 13k projector is hung from the ceiling for use with the screen.

BROADCAST / RECORDING

A control room is located on the second floor above Judson Live's kitchen with no direct access to Judson's Live.

An Allen and Heath digital Avantis audio console is connected to Front-of-House Avantis console via S-LINK; all Judson Live's input channels are shared; typically, FoH will have full control of the head-end amps. The Recording Avantis is also fitted with an A&H "SuperMADI" card to allow for multi-channel digital audio connections with Steinmetz Hall and a single audio feed via NDI camera from the Walt Disney Theater, Alexis and Jim Pugh Theater and DeVos Family Rooms.

A Blackmagic Designs ATEM 2 M/E Broadcast Studio 4K switcher with ATEM 2 M/E Advance Panel control surface serves as the primary video control/switching equipment.

Three (3) Panasonic AW-UE150 PTZ cameras are mounted across the back wall of the House, approximately 9' above the stage floor. Two (2) Panasonic AW-UE100 PTZ cameras are available as portable units. Camera control is Ethernet-enabled AW-RP150.

Six (6) BMD HyperDeck Studio 4K recorders with HyperDeck Extreme Controller allow for iso-recording of each camera but may be patched to any source in the system. Each deck has two (2) 2TB SSDs. A seventh BMD HyperDeck Studio 4K recorder is fed from the switcher.

A 55" OLED video display is used for MultiView from the ATEM switcher. Four (4) 32" OLED provide selectable views.

Three (3) BMD SmartScope DUO dual-screen monitors on the console monitor camera inputs for shading and control.

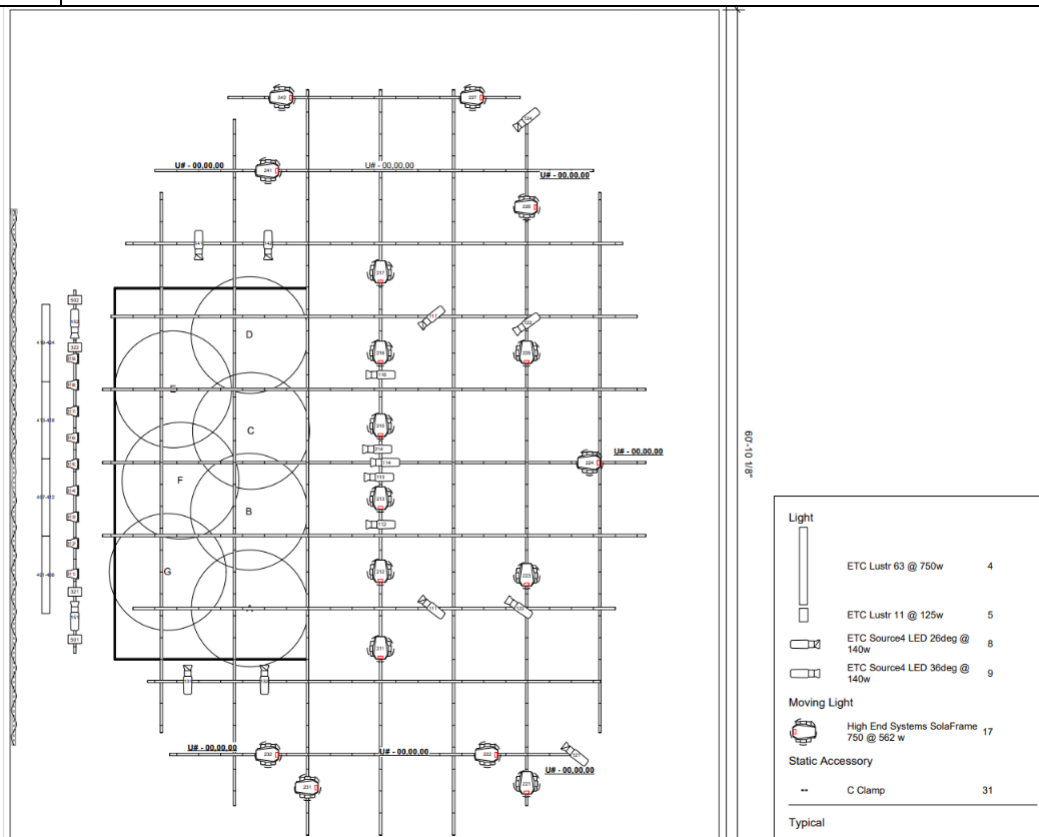
LIGHTING INFORMATION

Judson's Live is a fixed, full LED venue. The room contains the fixtures below in a set plot and does not have any loose inventory. There is no accommodation for additional fixtures. For musical performances, only static fixtures are used in set looks.

The House lighting is provided via LED-lit "clouds". They have pre-approved looks, which may not be change for performances.

LIGHTING EQUIPMENT

1	ETC EOS TI
17	HES Lonestar
6	26 degree ETC Lustr 3 w/XDLT barrel
12	36 degree ETC Lustr 3 w/XDLT barrel
9	ETC D40 Vivid Array
4	ETC Selador Vivid 11
4	ETC Selador Vivid 63



DRESSING ROOM / GREEN ROOM INFORMATION

DRESSING ROOM

A dressing room is located at level 2 and shares hallways, stairs and elevator with Steinmetz Hall. The room includes a make-up counter, mirrors and chairs. It also has a separate bathroom with shower stall.

Green Room / Catering

The Judson's Live Green Room is located on the second floor. It is 15'W X 32'L and includes two (2) separate restrooms with showers. The room includes a "living room setup" along with tables and chairs for craft services and dining.

