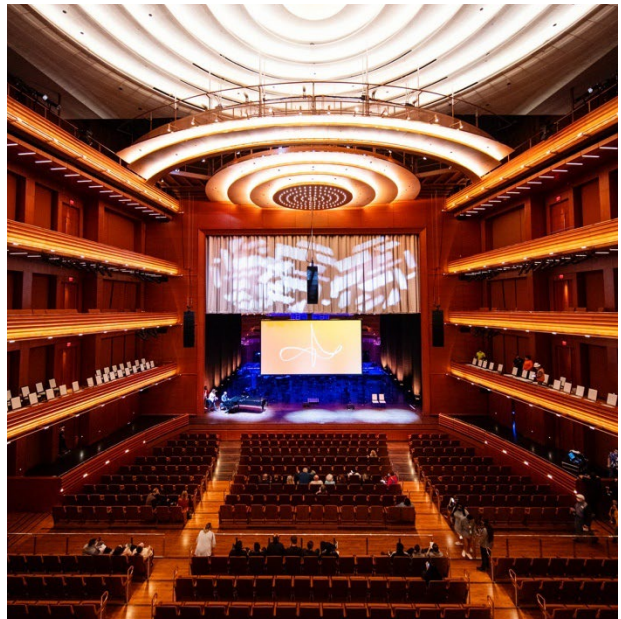


STEINMETZ HALL

TECHNICAL SPECIFICATIONS



Dr. Phillips Center for the Performing Arts

ORLANDO, FL 32801

www.drphillipscenter.org

TABLE OF CONTENTS

GENERAL CONTACT INFORMATION	3
MAP & DIRECTIONS	5
TRUCK, BUS & VEHICLE PARKING	6
LOADING DOCK INFO	7
STEINMETZ HALL CONFIGURATIONS	8
SEATING INFORMATION AND CAPACITY	9
SEATING OVERVIEW AND CHARTS	10
STAGE SPECIFICATIONS	18
ORCHESTRA PIT / EQUIPMENT	19
ORCHESTRA RISERS	20
CENTERLINE SECTION DRAWING	21
RIGGING SPECIFICATIONS / OBSTACLES	22
HANGING PLOT / LINE SCHEDULE	23-26
SOUND AND COMMUNICATIONS	27
LIGHTING INFORMATION	32
LIGHTING EQUIPMENT	33
STEINMETZ HALL LIGHTING REP PLOT – PROSCENIUM	35
STEINMETZ HALL LIGHTING REP PLOT – CONCERT	36
DRESSING ROOM / GREEN ROOM INFORMATION	37
BACKSTAGE MAPS	38

ADDRESS & CONTACTS

Dr. Phillips Center for the Performing Arts
155 East Anderson Street, Orlando, Florida 32801

- Administrative Phone 407.839.0119
- Fax Number 407.839.0116
- Box Office 407.358.6603
- Security/Stage Door 407.992.1777

PRODUCTION

A production manager is generally assigned to each visiting production seven (7) weeks out from arrival. S/he will reach out for advancing all needs. Prior to that, inquires may be sent to **productionmanagement@drphillipscenter.org**, which will reach the entire production management staff.

Production Labor – I.A.T.S.E.

Steinmetz Hall at the Dr. Phillips Center for the Performing Arts employs members of I.A.T.S.E. on a Collective Bargaining Agreement for all disciplines except video, which is staffed in-house. Hair and Make-Up falls under Local 798 with all other disciplines under 631.

- Head Carpenter sh.carp@drphillipscenter.org
- Head Audio sh.audio@drphillipscenter.org
- Head Electrician sh.lighting@drphillipscenter.org
- Head Flyman sh.flyman@drphillipscenter.org
- Head Props sh.props@drphillipscenter.org
- Head Wardrobe sh.wardrobe@drphillipscenter.org

OTHER CONTACTS

Guest Services Team	fohadvance@drphillipscenter.org
Security Team	security@drphillipscenter.org
Craft Services (Catering)	foodbeveragemanagement@dpc.org



MAP AND DIRECTIONS

The Dr. Phillips Center is conveniently located in Downtown Orlando and can be reached by several routes.

- Guest entrance: 445 South Magnolia Avenue
- Administrative offices: 155 East Anderston Street
- Loading dock and cast & crew arrivals: 470 South Rosalind Avenue

TRUCKS & BUSES GOING TO LOADING DOCK

VIA WEST ON I-4

- Exit to South Street (Exit 82B)
- Exit curves right
- Right onto South Street
- Right onto Orange Avenue
- Left onto Anderson Street
- Left onto Rosalind Avenue – loading dock is on the left

VIA EAST ON I-4

- Exit to Anderson Street (Exit 82C)
- Left on Anderson Street
- Left onto South Rosalind Avenue – loading dock is on the left

VIA WEST ON 408

- Exit to Orange Avenue/SR-527 (exit 10A)
- At the bottom of the ramp, turn right onto South Lucerne Circle East
- Right onto South Orange Avenue (northbound) – get in the second lane from left
- Loading dock will be on your left after passing under the 408 and past the first light (Anderson St.)

VIA EAST ON 408

- Exit to Rosalind Avenue exit (Exit 11A) – stay in the left lane
- Left onto South Street – drive around the building counter-clockwise
- Left onto Magnolia Avenue – pass under the DPC canopy
- Left onto Anderson Street
- Left onto Rosalind Avenue – the loading dock is on your left

GENERAL PARKING INSTRUCTIONS (NO ON-SITE PARKING)

There are numerous downtown parking garages, but the Orange County Administration Garage is the most convenient, especially to Back-of-House. It is located diagonally northeast from the Center bordered by South Street, Rosalind Avenue, Jackson Street and Liberty Street. Its entrance is on the East side of the garage off Liberty Street.

VIA 408 EAST

- Exit to Rosalind Avenue exit (Exit 11A) – be in the RIGHT Lane
- Left onto Rosalind Avenue, then first right onto Liberty Street, garage is on your left

VIA ALL OTHER DIRECTIONS

- Following directions to Loading Dock, but continue North on Rosalind Avenue, in right lane
- Right on Jackson Street
- Right on Liberty Street

TRUCK, BUS & VEHICLE PARKING

Truck and Bus parking on site is limited. Please discuss with DPC Production Manager during the Advance, prior to arrival. Steinmetz Hall is typically allotted two (2) loading docks for load-in and load-out, but other activities in the building may limit this. Parking garages are located nearby for cars. All parking arrangements must be discussed with a DPC Production Manager prior to the event for necessary passes and badges.

LOADING DOCKS

There are five (5) loading docks located in the rear of the building off South Rosalind Avenue, shared by the entire building. The Loading Docks are 4' high with deck levelers. The doors into the cross-dock receiving area are 8'w x 12'h. Doors from receiving area to Steinmetz Hall are 13' W x 16'H. A 50a shore power connection is available at Bay 1 and Bay 5.

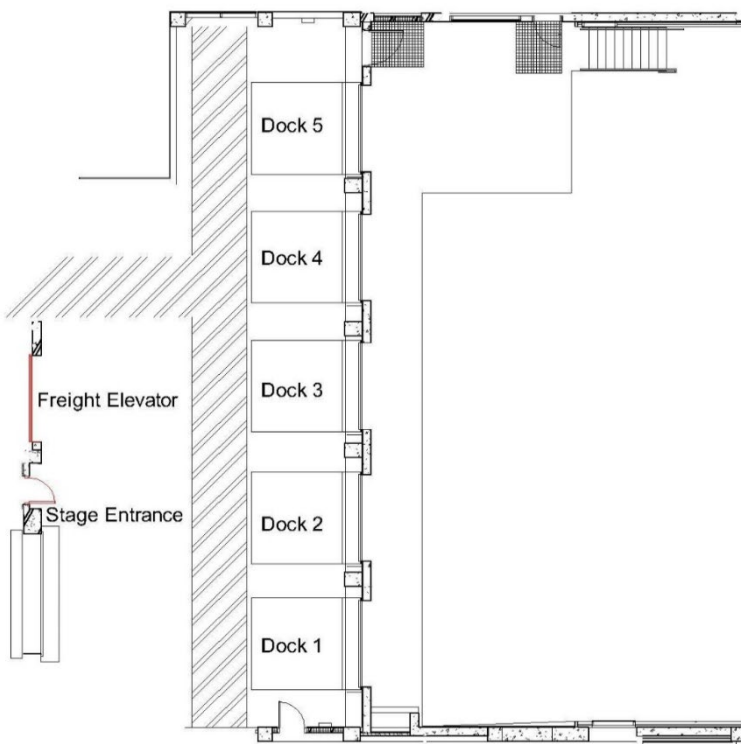


Hall to
JUDSON'S LIVE

STEINMETZ HALL

Elevator to
JIM & ALEXIS
PUGH THEATER

THEWALT
DISNEY THEATER



STEINMETZ HALL CONFIGURATIONS

Steinmetz Hall is a multi-form space which may be configured as a Concert Hall or Proscenium Theater.

CONCERT HALL

In this acoustic configuration, it is possible to walk a circle on each tier level. There is seating available (audience or cast) behind/above the stage on the Grand and Center Tiers.

PROSCENIUM THEATER

The Concert “shell” – Cassette and two (2) Towers - are stored upstage of line set 100 and a Proscenium portal is lowered to create a 50’w x 42’h portal. The stage itself is 50’ deep and with a grid 110’ overhead. Eighty-three (83) line-sets allow scenery, lighting and other elements to fly in and out of view.

HOUSE SEATING

- **Orchestra:** This level consists of 20 risers that move on Gala lifts. The seating rows are generally accessible from Doors 1-4. The risers and rotating seats create flexibility in how the venue is used. Rows start at AAA and continue to O. Rows AAA-CCC may be flipped to create a small stage extension or lowered to create a small pit. Rows AAA-BB may be flipped to create a Large Extension or Large Pit. All orchestra seating may be flipped to create a flat floor, which may be set at stage level or -26” to stage level. Many other configurations are possible.
- **Terrace:** This mostly fixed seating is terraced above the flexible orchestra level and consists of rows P-U. This seating area is accessible from Doors 3 & 4. An ADA lift next to door 2/4 allows wheelchair access to both House Left & House Right of rows T & U. Many seats on the left side of House Center are manually removable.
- **Grand Tier:** This is the second floor of the building, accessible from Doors 5 & 6. There are four (4) rows of seating in the back of the house, a single row of “box chairs” along the side and in Concert configuration, three (3) rows of bench seating on the Cassette, upstage of the performance area.
- **Center Tier:** This is the middle seating level on the third floor of the building, accessible from Doors 7 & 8. There are four (4) rows at the back of house, a single row of box chairs on the side and one row of bench seating upstage.
- **Upper Tier:** The highest level of seating on the fourth floor, accessible from Doors 9 & 10.

SEATING INFORMATION AND CAPACITY

MAXIMUM Seating Capacity is 1,764 Seats (See seating maps on following pages)

ORCHESTRA*

AAA – CCC (small extension/pit)	78
AA – BB (large extension/pit)	57
A – O	373
P – U	292
Boxes 3 & 4	4 each

UPPER TIER

A – H (including “gallery” seats)	372
-----------------------------------	-----

GRAND TIER

A – D	182
Boxes 5 – 14	44
A – B, Chorus/ Cassette	94

CENTER TIER

A – D	182
Boxes 5 – 14	44
A – B, Chorus/ Cassette	34

The **ORCHESTRA LEVEL** seating has multiple designed configurations:

- **Full Seating:** All seats are up and in a tiered fashion - rows AAA, BBB, CCC, AA, BB and A-O. The front seating row is AAA. A short knee wall sits in front of this row with front-fill speakers in the face of the stage that are usable for sound reinforcement. Row AAA seats 1 & 101 (House Left) and 114 & 2 (House Right) may be removed to provide space to install steps from the House directly to the stage. [Notice prior to load-in is required to make this change.]
- **Small Extension:** The first three rows of seats – AAA, BBB & CCC – are flipped under the risers and the risers are brought to the stage level. The first row of seating in this configuration is row AA with a tall knee wall in front of the stage; there are no front-fill speakers installed. Direct House-Stage stairs are not easily achieved.
- **Large Extension:** The first five rows of seats – AAA, BBB, CCC, AA and BB – are flipped under the risers and the risers are brought to the stage level. The first row of seating in this configuration is A with a tall knee wall in front of the stage; there are no front-fill speakers installed. Row A seats 1 & 101 (House Left) and 114 & 2 (House Right) may be removed to provide space to install steps from the House directly to the stage. [Notice prior to load-in is required to make this change.]
- **Small Pit:** Similar to Small Extension from a seating perspective, the first three rows are lowered below the House seating level for use by an orchestra/band. A short knee wall is installed in front of the first row, AA, that allows view of the orchestra. A 40% open house shroud is available to be placed over the pit.
- **Large Pit:** Similar to Large Extension from a seating perspective, the first five (5) rows are lowered for use by an orchestra/band. A short knee wall is installed in front of the first row, A, that allows view of the orchestra. A 40% open house shroud is available to be placed over the orchestra.
- **Front-of-House Mix Position:** A position can be created on the House Right side of rows N & O on the Orchestra level for Audio and Lighting position.

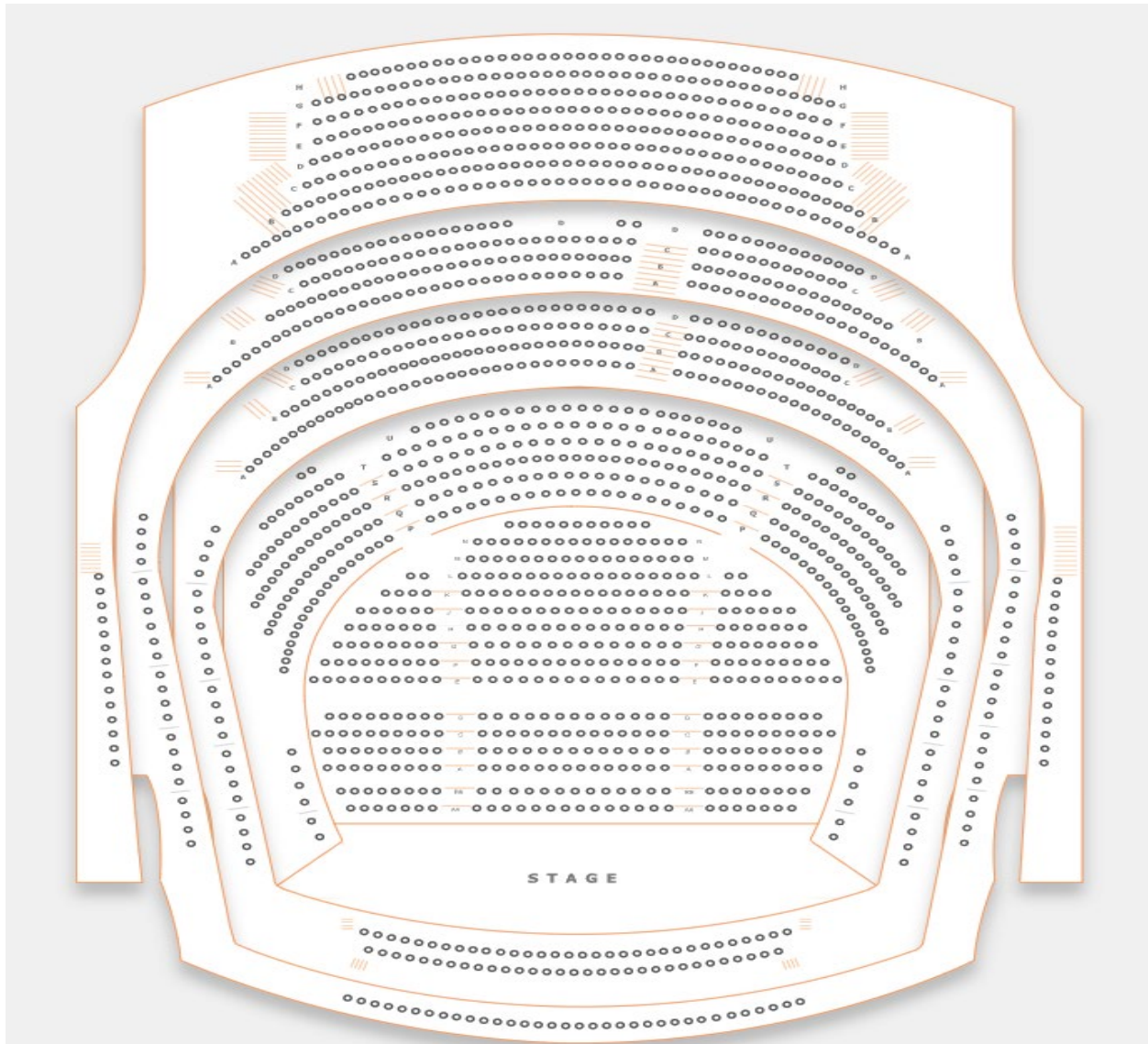
CONCERT CONFIGURATION



A view of Steinmetz Hall in Concert Configuration with Large Extension.
This picture is taken from the center of the Grand Tier.

SEATING OVERVIEW

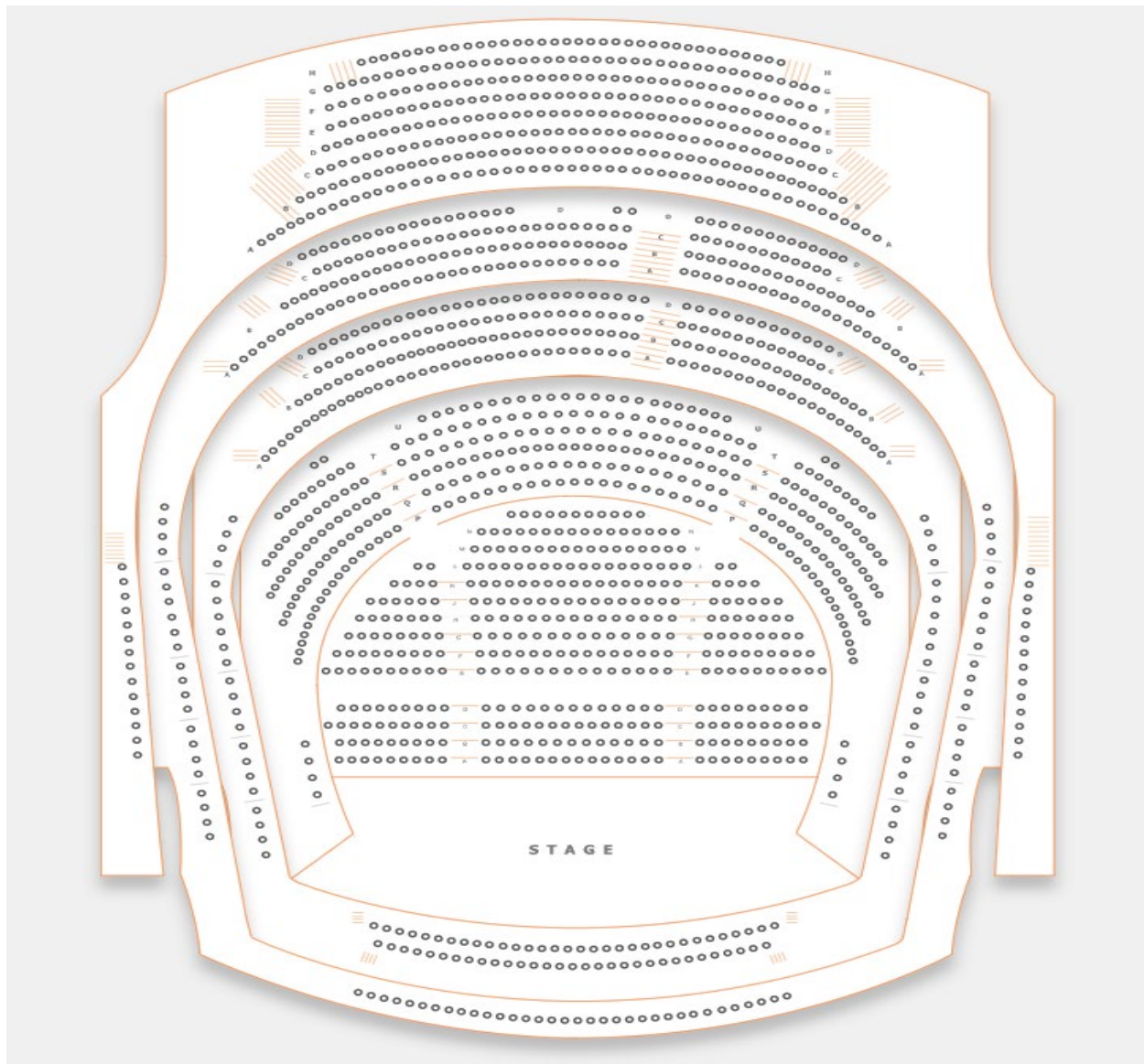
Concert Configuration with Small Extension



(Rows AAA, BBB, CCC are not available or shown)

SEATING OVERVIEW

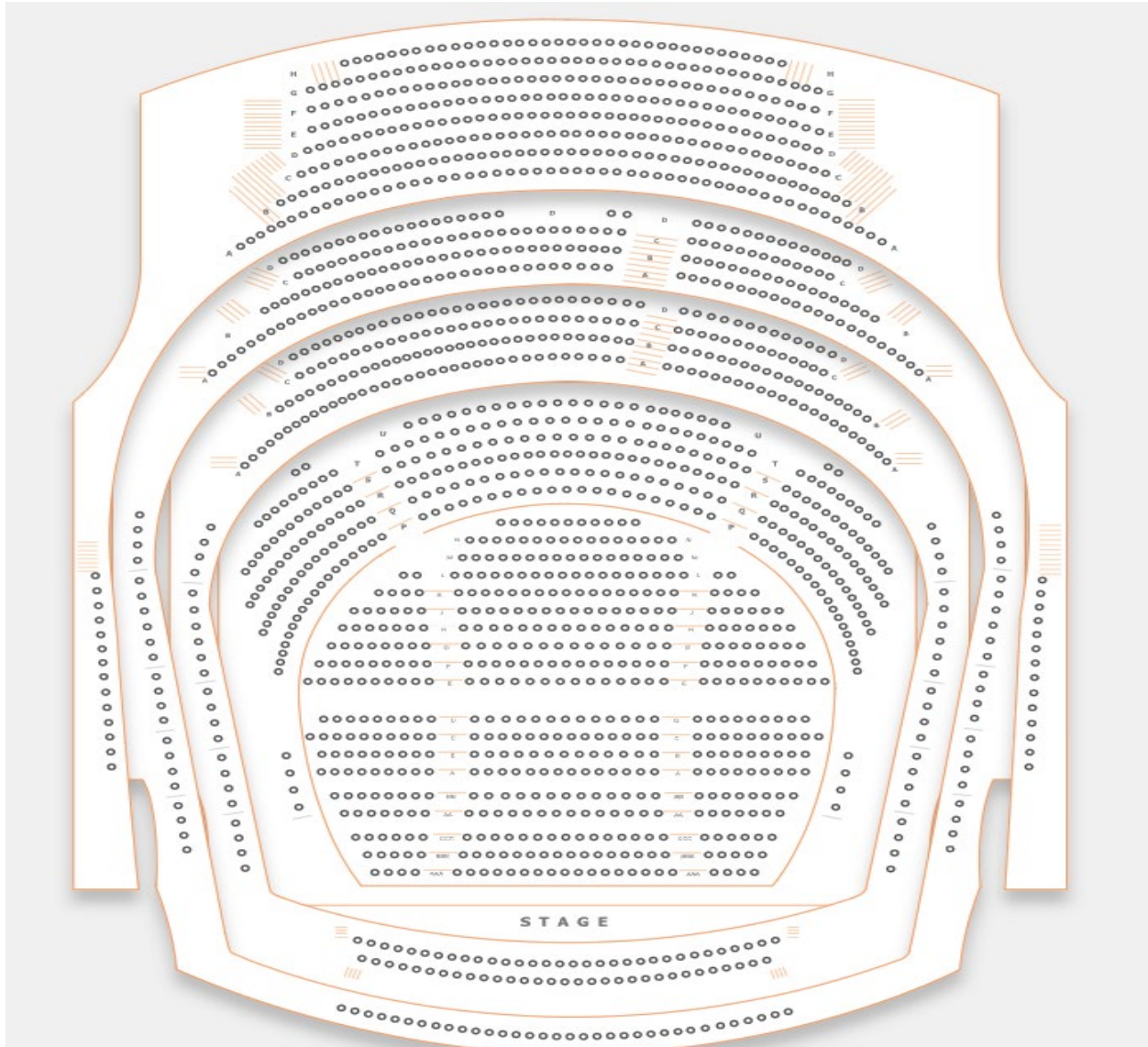
Concert Configuration with Large Extension



(Rows AAA, BBB, CCC, AA and BB are not available or shown)

SEATING OVERVIEW

Concert Configuration with Full Seating



The Stage Depth is 27' 6" on Center-Line
(All seats are available, maximum capacity)

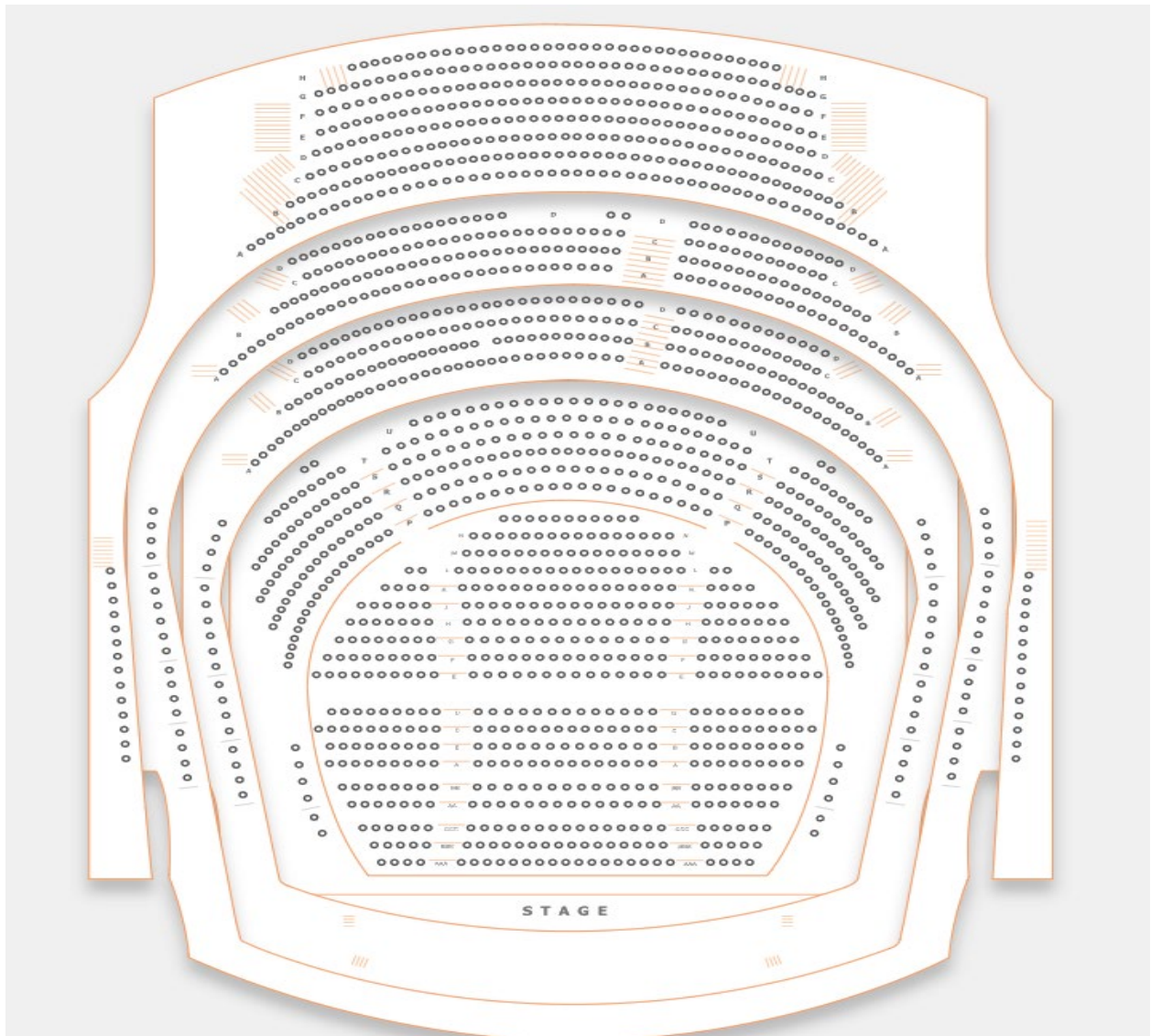
PROSCENIUM CONFIGURATION



Above is a view of Steinmetz Hall in Proscenium Configuration with Small Pit.
This picture is taken from the center of Row P of the Orchestra Terrace.

SEATING OVERVIEW

Proscenium Configuration with Full Seating

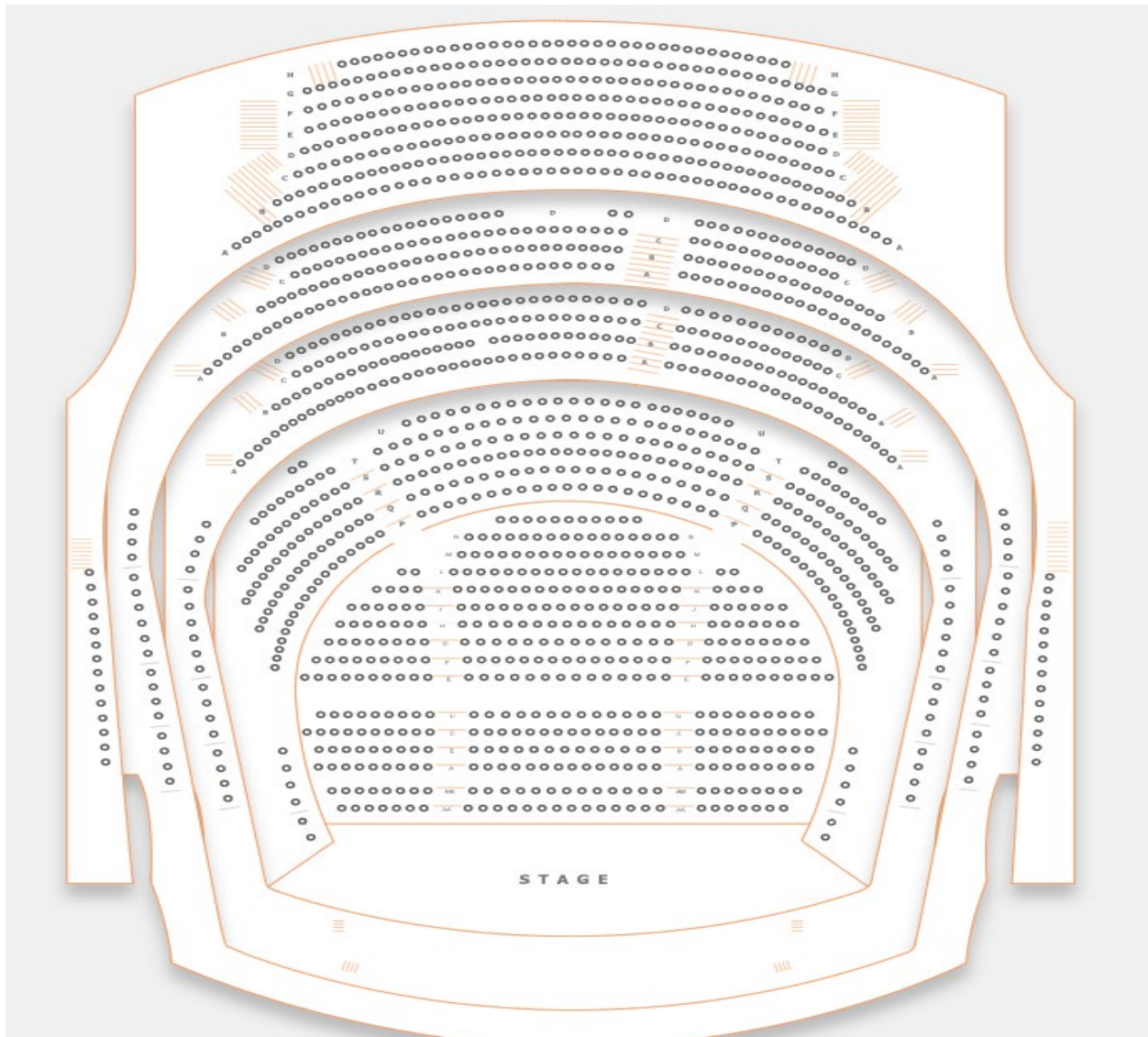


(Boxes 5, 6, 15 & 16 are not available)

The use of Speakers and/or Lighting Boom positions make the boxes on Center and Upper Tier unusable.

SEATING OVERVIEW

Proscenium Configuration with Small Extension or Pit



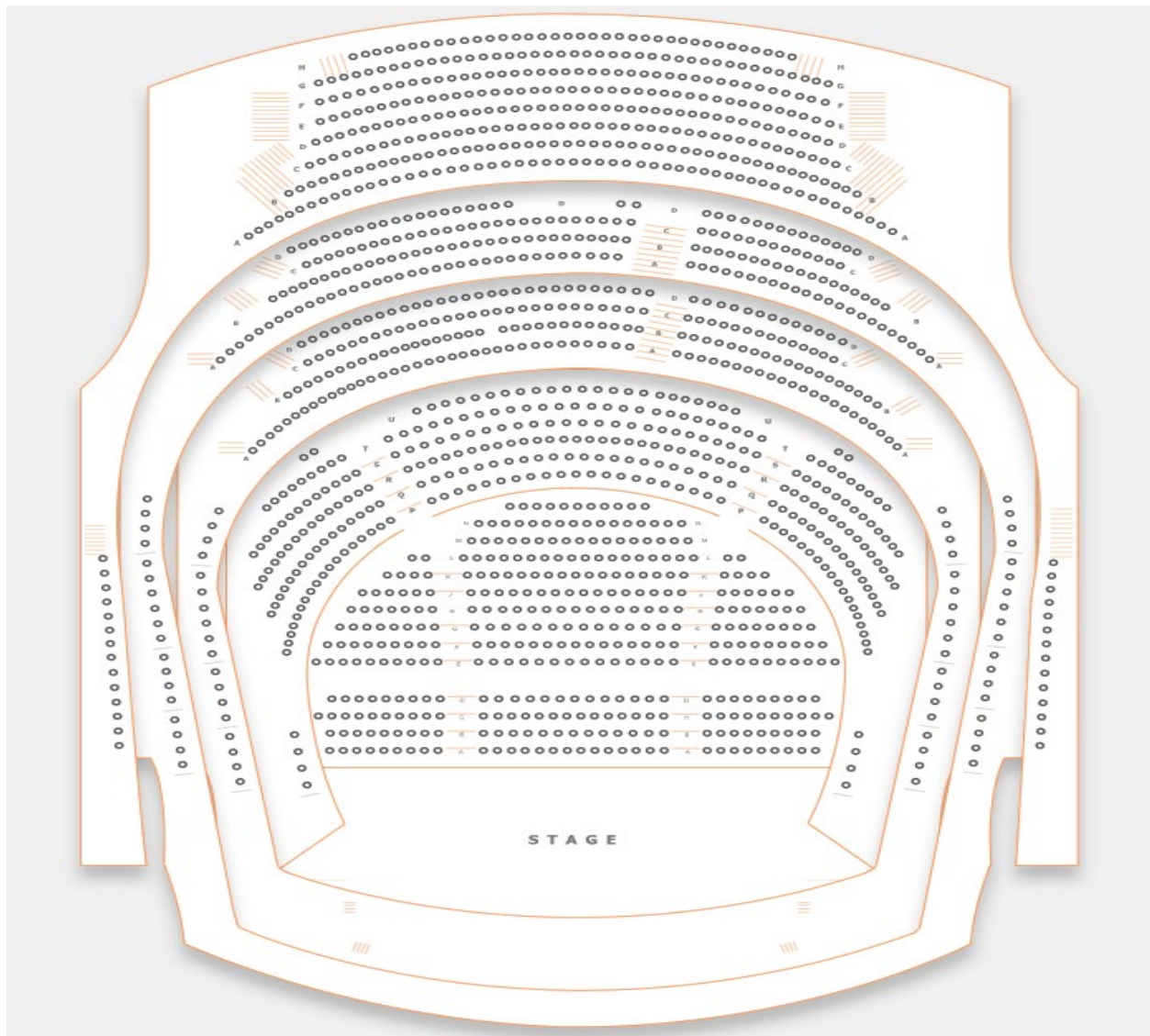
(Rows AAA, BBB, CCC are not available or shown)

(Boxes 5, 6, 15 & 16 are not available)

The use of Speakers and/or Lighting Boom positions make the boxes on Center and Upper Tier unusable.

SEATING OVERVIEW

Proscenium Configuration with Large Extension or Pit



(Rows AAA, BBB, CCC, AA & BB are not available or shown)

(Boxes 1, 2, 5, 6, 15 & 16 are not available)

The use of Speakers and/or Lighting Boom positions make the boxes on Center and Upper Tier unusable.

STAGE SPECIFICATIONS

Steinmetz Halls stage floor is a semi sprung floor with double layer tongue and groove plywood on aluminum sleeper over rubber blocks and finished with 1" tongue and groove oak. The rubber blocks are surrounded by a steel channel which limits over-decompression. Any damage to floor incurred by a production must be restored. **NO nails or screws may be drilled into the stage floor.**

STAGE FLOOR CONFIGURATIONS

HEIGHT OF GRID UNDERSIDE	110'
HEIGHT OF PROSCENIUM OPENING	42'
WIDTH OF PROSCENIUM OPENING	50'
HEIGHT OF GALLERIES	
Operating Pin Rail SR	Stage Level
Wing Clearance under SL and SR Galleries	36' 6"
Upper Operating Pin Rail SR	41'
Clearance under Upstage Catwalk (US of line set 100)	75'
Upper Loading Gallery	95'
DEPTH OF STAGE (from Plaster Line)	55'
WIDTH OF STAGE	148'
Width of stage (center to SR)	53'
Width of stage (center to SL)	55'
Width of stage left wing	40'
CENTER STAGE TO UPPER PIN RAIL SR	50'
CENTER STAGE TO UPPER PIN RAIL SL	48' 9"

THRUST CONFIGURATIONS

APRON (from Plaster Line)	5' 2"
(from House Curtain)	7' 2"
LARGE EXTENSION (from Plaster Line)	22' 1"
(from House Curtain)	25'
SMALL EXTENSION (from Plaster Line)	15' 1"
(from House Curtain)	22' 2"
HEIGHT OF STAGE (seating level to stage level)	3' 6"

ORCHESTRA PIT

The Orchestra Pit can be configured into two sizes. In a Large Pit configuration, the pit consists of the first 5 rows – AAA, BBB, CCC, AA and BB. In a small pit configuration, the pit consists of only the first 3 rows – AAA, BBB, and CCC. The levels of risers can be individually adjusted. The pit CANNOT move with people in the pit.

A 40% open PVC-based scrim is available for both size configurations as a cover with cut-out for the conductor.

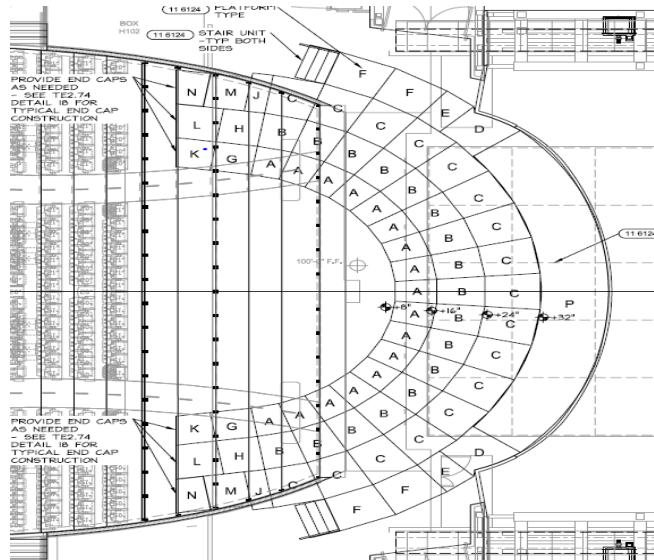
LARGE PIT Opening (Stage edge to DS pit wall)	16'd
Overall Dimensions including pit under-hang	24' x 52'
Approximate Capacity of Musicians	55 Musicians
SMALL PIT Opening (Stage edge to DS pit wall)	10'd
Overall Dimensions including pit under-hang	18' x 52'
Approximate Capacity of Musicians	30 Musicians
DEPTH OF PIT (seating level to stage level)	8' 6"

ORCHESTRA EQUIPMENT (RATstands)

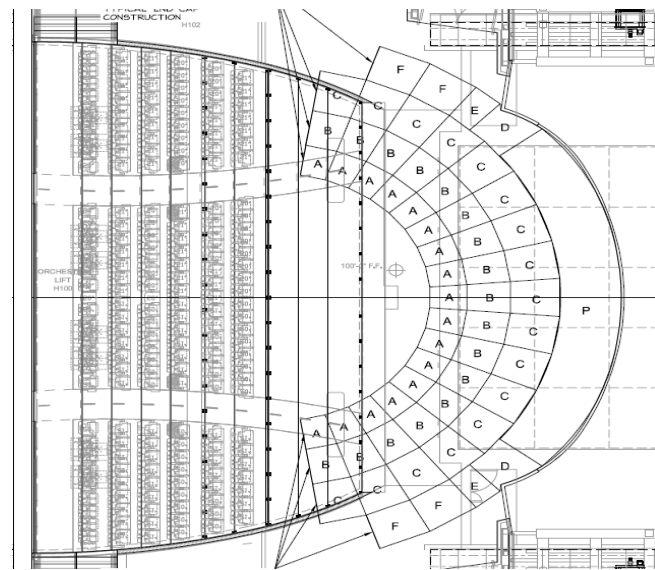
Musician Chairs	100
Bass Stools	10
Music Stands	110
Music Stand Lights (dimmable)	110
Conductor Podium	1
Conductor Stands	2
Conductor Chair	1

ORCHESTRA RISERS

Available risers are designed to fit in the arc of the Cassette in Concert. The “P” riser is fixed at 32” in height. Standard legs of 8”, 16”, 24” and 32” exist for all other decks.

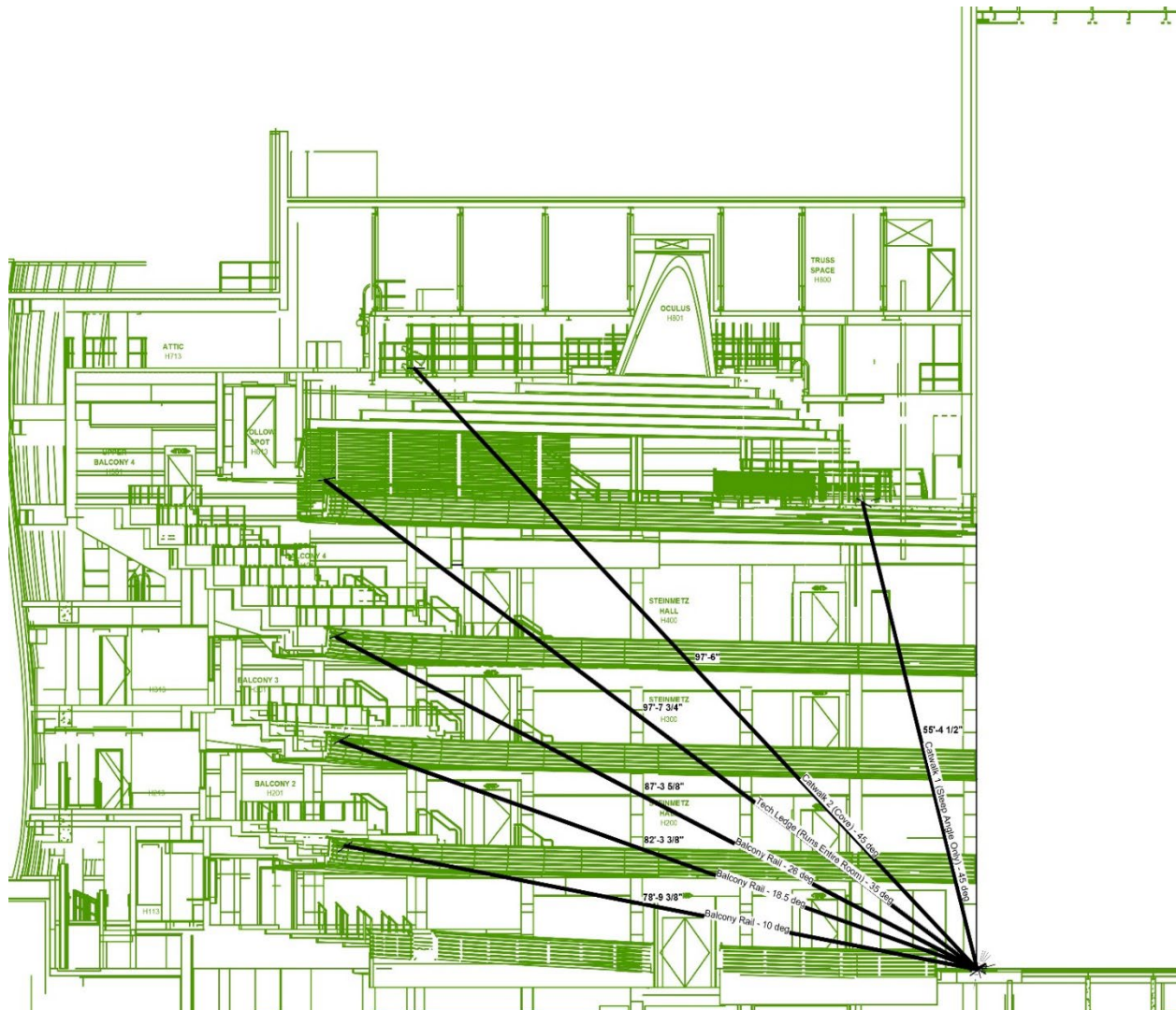


RISERS FOR LARGE EXTENSION



RISERS FOR SMALL EXTENSION

STEINMETZ HALL: CENTER LINE SECTION



RIGGING SPECIFICATIONS

Steinmetz's counter-weight system is single purchase, under-hung, with (83) line sets currently installed and two operating positions; one position is located on stage level Stage Right. The second is located 36'6" above the Stage Right Deck.

The Grid is walkable on Gridiron Channel Deck; wells are located at 0'0", 10', 20', and 30' left and right of center.

Number of Available Line Sets: 83-line sets at 6" and 12" on center (see line set schedule).

Grid Height	110'
Pipe Travel	103'
Max Live Load Weight	# 2,000
Total Weight Available	# 35,000
Length of Battens	66' (extensions available)
1.25 Ton, 32 FPM Chain Motors	3 on stands on Forestage Grid 3 on stands on Attic (above Forestage) 4 on stages on Grid, 110' above stage

OBSTACLES

- Line set #2 is the house curtain and is permanent as a guillotine. It cannot be removed or transferred to a different position.
- There are 1' gaps from downstage to upstage located every 9' beginning at 4'6"-5'6".
- There are line set positions marked as "Unavailable" that are currently not installed (see line set schedule).

SOFT GOODS INVENTORY

	Unit	Height	Width
House Curtain (100% Fullness)	1	45'	65'
Borders	8	12'	66'
Legs	8 (Pair)	34'	15'
Flat Panels (Blackout)	4	34'	30'
Pleated Black Panels (100% Fullness)	2 (Pair)	34'	34'6"
Scrim (Blue Sharktooth)	1	34'	66'
Scrim (Black Sharktooth)	1	34'	66'
Plastic Cyc (White PVC)	1	38'	66'
Cyc (White Leno Filled)	1	38'	66'
Flat Panels	8	34'	14'
Side Tabs	4	34'	20'

LINE SCHEDULE

Non-permanent hangs are subject to change and verification during advance. All the dimensions below were taken from the plaster line, the downstage side of the portal. The portal is 12" deep.

LINE #	POSITION	HOUSE HANG	NOTES	WEIGHT
1	2' 0"	Valance		
2	2' 6"	House Curtain	Permanent	
Unavailable				
4	3' 6"	Border #1		
5	4' 0"	Legs #1		
6	4' 6"	1 st Electric		
1' - 0" Spreader Gap				
8	5' 6"			
9	6' 0"			
10	6' 6"			
11	7' 0"			
12	7' 6"			
13	8' 0"			
14	8' 6"			
15	9' 0"			
16	9' 6"	Border		
17	10' 0"	Legs		
18	10' 6"			
19	11' 0"			
20	11' 6"	2 nd Electric		
21	12' 0"			
22	12' 6"			
23	13' 0"			
24	13' 6"			

LINE #	POSITION	HOUSE HANG	NOTES	WEIGHT
1'- 0" Spreader Gap				
26	14' 6"			
27	15' 0"			
28	15' 6"			
Unavailable				
30	16' 6"	Border		
31	17' 0"	Legs		
32	17' 6"			
33	18' 0"	3 rd Electric		
34	18' 6"			
Unavailable				
36	19' 6"			
37	20' 0"			
38	20' 6"			
Unavailable				
40	21' 6"			
41	22' 0"			
42	22' 6"			
1'- 0" Spreader Gap				
44	23' 6"	Border		
45	24' 0"			
46	24' 6"	Legs		
Unavailable				
48	25' 6"			
49	26' 0"			
50	26' 6"			
51	27' 0"	4 th Electric		
52	27' 6"			
53	28' 0"	Mid Stage Black		
54	28' 6"			

LINE #	POSITION	HOUSE HANG	NOTES	WEIGHT
55	29' 0"			
56	29' 6"			
57	30' 0"			
58	30' 6"			
59	31' 0"			
60	31' 6"	Border		
1' - 0" Spreader Gap				
62	32' 6"	Legs		
Unavailable				
64	33' 6"	Black Scrim		
65	34' 0"			
66	34' 6"	5 th Electric		
67	35' 0"			
68	35' 6"			
69	36' 0"			
70	36' 6"			
Unavailable				
72	37' 6"			
73	38' 0"			
74	38' 6"	Border		
Unavailable				
76	39' 6"	Legs		
77	40' 0"	6 th Electric		
78	40' 6"			
1' - 0" Spreader Gap				
80	41' 6"	Rear Projection Screen		
81	42' 0"			
82	42' 6"	Flat Panel Blackout		

LINE #	POSITION	HOUSE HANG	NOTES	WEIGHT
Unavailable				
84	43' 6"			
85	44' 0"			
86	44' 6"			
Unavailable				
88	45' 6"			
89	46' 0"			
90	46' 6"			
91	47' 0"			
Unavailable				
93	48' 0"			
94	48' 6"			
95	49' 0"			
96	49' 6"			
1' - 0" Spreader Gap				
98	50' 6"			
99	51' 0"			
100	51' 6"	Full Black		

SOUND AND COMMUNICATIONS

When Steinmetz Hall is in Concert Configuration, with the Cassette in, the Hall is acoustically reflective and has achieved an N-1 Rating, less than 19dB. Most performances in Concert configuration are recommended to perform without amplification, though a House system exists for curtain speeches and basic speech. If a production does choose to reinforce and amplify, monitor wedges are NOT recommended as the sound reflects off the Cassette and creates multiple issues in clarity and intelligibility. In-Ear monitors are available in-house. Typically, the House speaker arrays would be flown out into storage. A PA system remains usable for curtain speeches and general announcements.

SPEAKERS

Main Arrays: The primary speaker system consists of two D&B V-Series line arrays. The Left and Right line arrays each have seven V12 Series and two V8 Series speakers each and flown downstage of the proscenium. A similar Center array is available and may be hung (and struck) manually for a production.

Front Fill: D&B E8 front fills, service the first few rows of seating in the orchestra when NO extension is used and are housed in a continuous cavity along the front of the stage.

Delay/Fill: D&B E8 and E12 speakers provide fill for seating located in the Towers, Cassette, Grand, Center, and Upper Tiers.

Sub Configuration: Sub-woofers are D&B SL-GSUB (four available). These can be located beneath the stage in the orchestra pit or on stage level in front of the proscenium arch.

Patching: All systems are available for individual discrete patching at mix positions as well as DSL and DSR patch points.

Audio Power: Audio Power is provided through a K -13 transformer delivering clean isolated power to all audio and video locations throughout the theater. The following locations are available company tie ins.

- 200 amp 3 phase company switch at DSL
- (4) 20 amp receptables available DSR, DSL, USL, and USR

SOUND MIX POSITIONS

There are three mixing positions available.

- **SOUND BOOTH**

Located approximately 95' from the downstage edge of the apron. This position is in an enclosed booth with a window that can open. It is approximately 18'w X 8'd, with a 30" counter against the window wall. The booth is located behind row U of the Terrace, with the window behind seats 113-116. A cable run from DSL or DSR through the basement and up into the booth is approximately 225'.

- **ORCHESTRA**

Approximately 62' from the downstage edge of the apron to the back of the Orchestra level – replacing part of rows N & O (N108 –114 and O108-113) on the House right side of the center seating section. The floor is sunken but allows view over seated guests in row M ahead and view for patrons in row P over the consoles and operator. This is an exposed position, so console lighting, height of consoles, and activity are visible by patrons. The width of this position is 11'. The cable run is approximately 175' down through the basement to DSL or DSR. This is the standard position for Proscenium configurations, but may also be set in Concert configuration. Typically on Production Hold, please confirm with DPC Production staff prior to on-sale.

- **TERRACE**

Approximately 85' from the downstage edge of the apron to this position, which contains a DiGiCo SD 11 Control Surface – MADi & Multi-Mode Optics ST. Connections: MADi x 2, OPTICS x 1 Connectors: BNC, OpticalCon Duo. This position is generally used for acoustical performances with spoken word or simple performances such as comedians, and requires NO seat kills.

FRONT OF HOUSE CONSOLE

X-SD12-96-W-WS-ST	<p>DiGiCo SD 12-96 Control Surface – MADI & Multi-Mode Optics ST.</p> <p>Connections: MADI x 2, Optics x 1, Internal Waves Card</p> <p>Connectors: BNC, OpticalCon</p>
X-WAVES-SD12	DiGiCo SD 12-96 SD -Waves Card (Internal SD Waves Card. Factory Fit)
X-WAVES-EX2	External Extreme DiGiCo Waves package
MGB-P	DiGiCo DiGi-Grid MGB 112/128 Ch @48kHz
SD Rack	<p>2 DiGiCo SD Racks - MADI & Multi-Mode Optics ST.</p> <p>Connections: MADI x 2, Optics x 1</p> <p>Connectors: BNC, OpticalCon</p> <p>Both have 56 inputs, 1 has 8 outputs, the other has 24 Analog and 16 AES Outputs</p>
SD-Mini Rack	<p>8 AES Inputs and 8 AES Outputs</p> <p>MADI & Multi-Mode Optics ST.</p> <p>Connections: MADI x 2, Optics x 1</p> <p>Connectors: BNC, OpticalCon</p>

STAGE MONITORS / SIDE FILLS / AMPLIFIERS

6	D&B M4	Monitors	15" Stage Monitor
4	D&B M6	Monitors	12" Stage Monitor
2	D&B V7P	Side Fills	2 x 10", 1 x 8 cone 3-way passive point source speaker
2	D&B V10P	Side Fills	2 x 8" 2-way passive point source speaker
2	D&B V Sub	Side Fills	Cardioid Sub, 18" front 12" rear
2	D&B D20	Amplifiers	4 Channel 1600 W 4 Ohm
1	D&B D80	Amplifiers	4 Channel 4000 W 4 Ohm

RECORDING / PLAYBACK / EFFECTS

1	Denon	DN-500CB SD/USB Recorder
1	Tascam	DA-3000 SD Recorder
1	Apple	Mac Mini with Q-Lab Video
1	Sony	UBP-X 1000ES Blu-Ray
1	Atomos	Shogun Studio Dual Recorder

VIDEO

2	Panasonic	AW-UE100 PTZ Camera (mounted on Grand Tier Rail)
1	Panasonic	AV-UHS500-PJ Production Switcher
4	Blackmagic	Smart Video Hub 12G 40x40
1	Apple	iMac 27" with Q-Lab Video and Audio
2	Yamaha	HS-5 (Control Room Monitors)

MICROPHONES

2	Earthworks	FM – 500 / HC
1	Earthworks	PianoBar Mic System
4	Crown	PCC – 160 Boundary Mic
1	Shure	Beta 52A Kick Drum Mic
9	Shure	SM 58
12	Shure	SM 57
6	Shure	Beta 56 A Drum Mic
8	Shure	MX184 Lav Mic
8	Shure	Mx185 Lav Mic
1	Shure	VP88 Stereo Mic
6	Sennheiser	MD421
2	ElectroVoice	RE20
2	Mitek	MIK – C7e Large Diaphragm Condenser
1	Mitek	MIK – 201 2 – ch Mic Preamp
4	DPA	4006A Omnidirectional Small Diaphragm Condenser
4	DPA	4011A Cardioid Small Diaphragm Condenser
3	DPA	4099 Instrument Mic with Universal Clip

WIRELESS MIC SYSTEM

4	Shure	AD4Q Axient Digital 4 Channel Mic Receivers
1	Shure	ATX630 Axient Antenna Distribution System
16	Shure	ADX1 = G57 WLX Mic Transmitter
8	Shure	ADX2 / K8: G57 Handheld Transmitter, KSM 8 Capsule
4	Shure	SM86 Wireless Capsule
8	Shure	Beta 58A Wireless Capsule
4	Shure	Beta 87A Wireless Capsule

DIRECT BOXES / INTERFACE

1	Radial	JDV Active DI Box
4	Radial	JDI Duplex DI Box
4	Radial	JDI Passive DI Box
1	Radial	ProAV 2 Multi-media DI Box
1	Motu	8D Interface

BACKSTAGE COMMUNICATIONS

Steinmetz Hall has only four (4) party-lines for use.

1	Clear Com	HelixNet Digital Intercom System
1	Clear Com	Freespeak II Wireless Intercom System
16	Clear Com	HelixNet Belt Pack
1	Clear Com	LQ – R – 2W4 – 4W4 Interface (portable)
8	Clear Com	Freespeak II Belt Pack
12	Clear Com	CC – 110 Single – Muff Headset
8	Clear Com	CC – 400 Double – Muff Headset

OTHER IN-HOUSE EQUIPMENT, SUBJECT TO AVAILABILITY

One 56-Channel Analog Split with 3 available 56-Channel Fan Outs
DiGiCo SD10T

LIGHTING INFORMATION

CONTROL

The lighting control booth is at the back of the Grand Tier, on the 2 nd floor	
1	ETC Eos Ti 24k Console
1	ETC GIO @5
653	ETC Sensor Dimmers

POWER DISTRIBUTION

Stage	
1	200A DSL Camlock Connection with Isolated Ground
2	400A DSL Camlock Connection
1	200A USR Camlock Connection

Pin Rail	
3	400A Lower SL Pin Rail Camlock Connection
1	100A Pin and Sleeve 3 Phase SL Upper Pin Rail
1	100A Pin and Sleeve 3 Phase SR Upper Operator Bridge

Grid	
1	100A Pin and Sleeve 3 Phase USL Grid
1	100A Pin and Sleeve 3 Phase USR Grid
1	100A Pin and Sleeve 3 Phase SL Forestage Grid
1	100A Pin and Sleeve 3 Phase SR Forestage Grid

Basement	
2	400A Lower SL Pin Rail Camlock Connection
1	100A Pin and Sleeve Arbor Pit
1	200A Trap Room Camlock Connection

Video Booth	
4	L6 - 30

LIGHTING EQUIPMENT

FOLLOWSPOTS

3	Lycian 1295 3K Follow spots located in spot booth 100' from stage at a 32-degree angle
---	--

HOUSE LIGHTING PLOT

Steinmetz Hall has a standard House lighting plot hung as shown on following pages. Fixtures that are NOT a part of the House plot may be hung or used as part of a ground package at no cost, other than the labor to position and strike, are noted below.

CONVENTIONAL

57	ETC Source 4 PAR
2	14-degree ETC Source 4
15	19-degree ETC Source 4
32	26-degree ETC Source 4
34	36-degree ETC Source 4

LED

3	14-degree ETC LUSTR Series 3 w/XDLT Barrel
2	19-degree ETC LUSTR Series 3 w/XDLT Barrel
16	26-degree ETC LUSTR Series 3 w/XDLT Barrel
1	36-degree ETC LUSTR Series 3 w/XDLT Barrel
8	ChromaQ Colorforce II 72 LED Strip Lights
2	HES Solaframe Theatre
9	HES SolaPix 19"
16	ETC Desire Fresnel LED

DIMENSIONAL INFORMATION

Downstage Edge to Tier 1 Rail	83'-5" at 6° angle
Downstage Edge to Tier 2 Rail	85'-6" at 14° angle
Downstage Edge to Tier 3 Rail	89'-2" at 22° angle
Downstage Edge to Tier 4 Rail	96' at 30° angle
Downstage Edge to Tech Level Rail	98'-4" at 41°
Downstage Edge to Spot Booth	103' at 32° angle
Curtain Line to Lighting Booth	112'

HANGING RESTRICTIONS

- Balcony rails cannot support moving fixtures or projectors. Rails may only be used for traditional mounting with a clamp attached to the factory-provided yoke. No accessories to cantilever fixtures away from the pipe.
- Unistrut positions in the space can support 20lbs a foot. It cannot accommodate any moving fixtures or cameras.

FIXTURE RESTRICTIONS

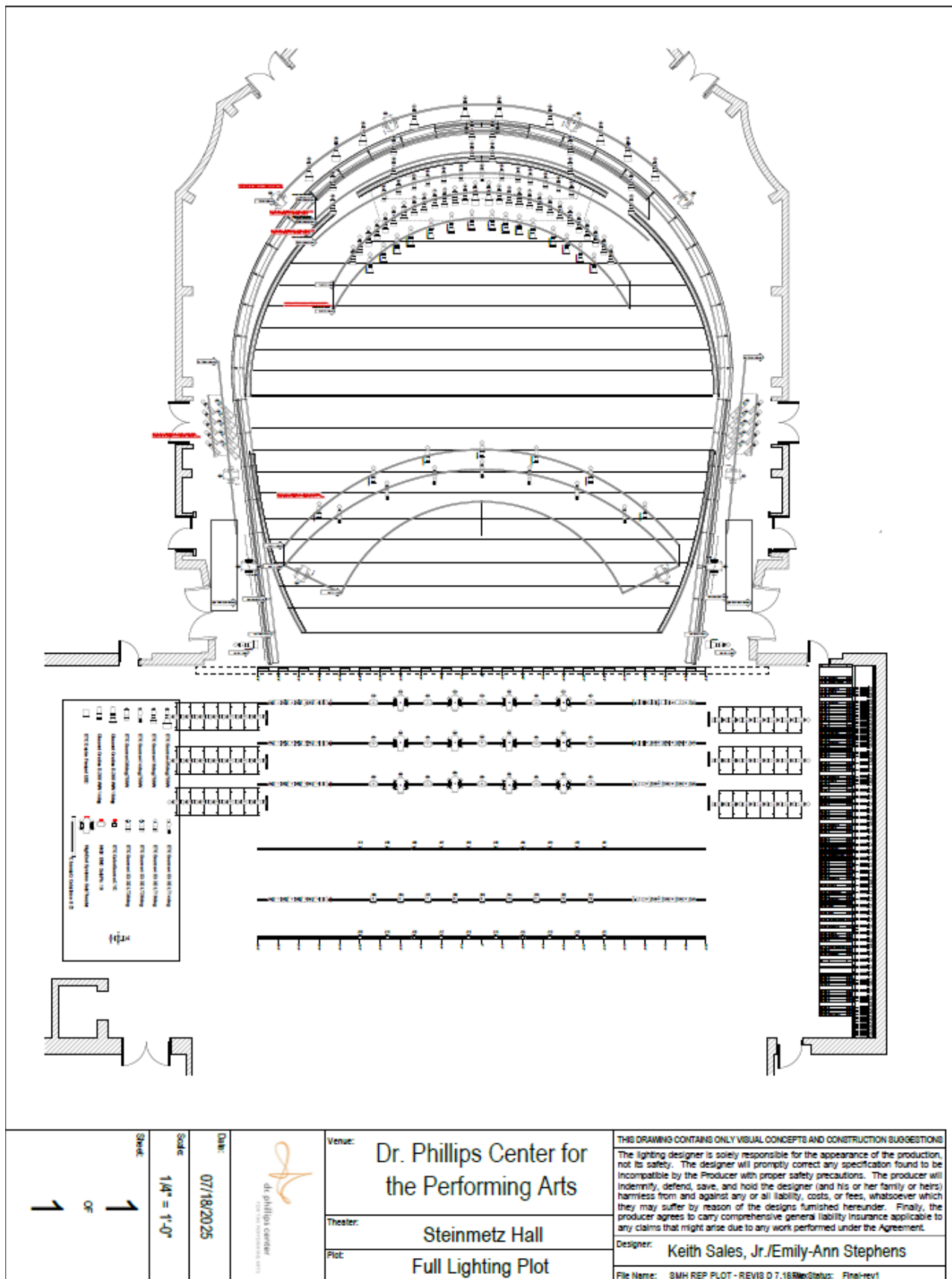
- If your show is to be unamplified in the concert room configuration, we have a restriction on lighting instruments that can be utilized in the room. Please reach out to the production lighting supervisor for an up-to-date list of approved lighting fixtures.
- Moveable room elements do not contain dimmable circuits. Fixtures should be DMX controlled on relay or constant power.

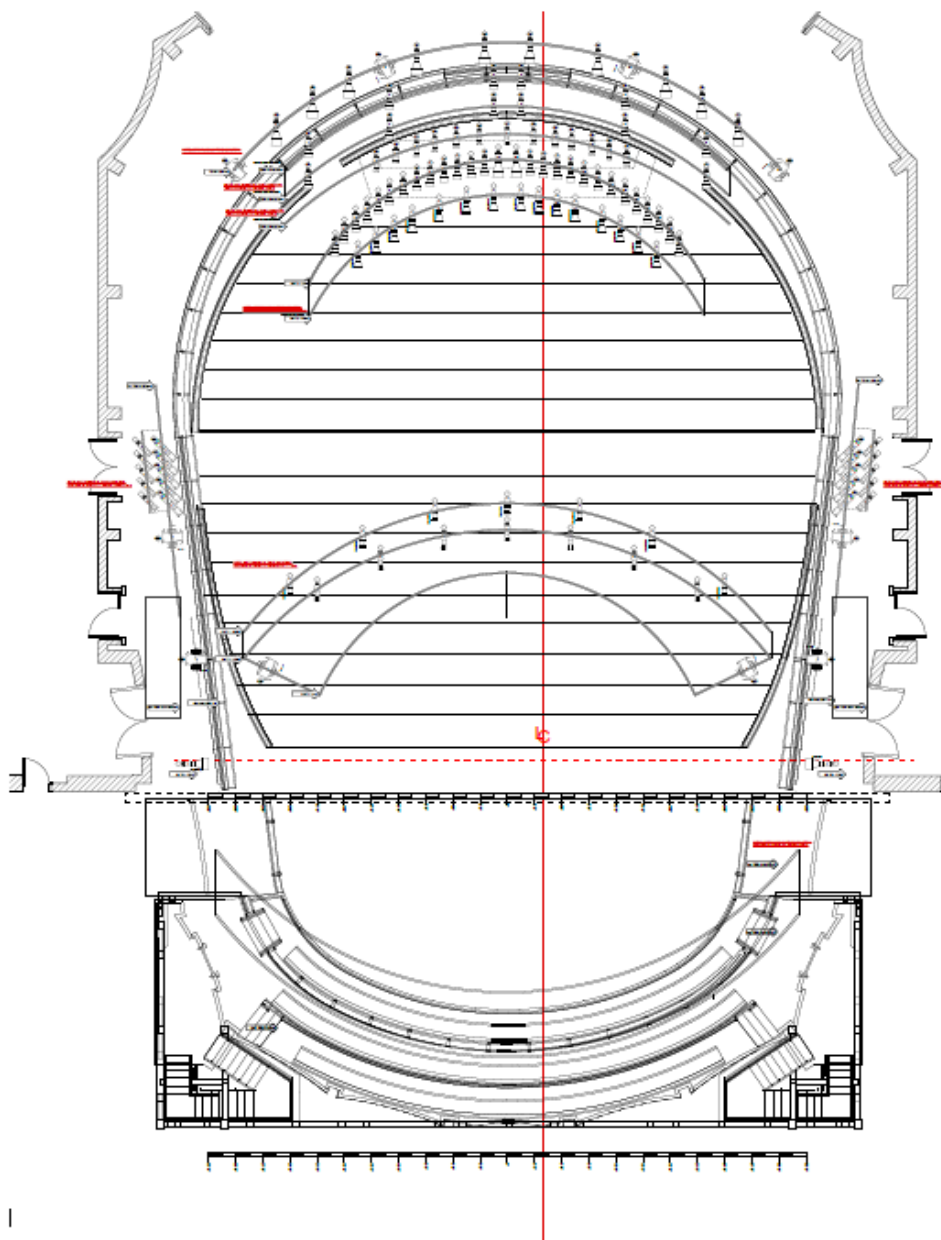
BOOM BOX INFORMATION

- The Box Boom lighting positions are shown on the following plan and the center-line drawing is on page #20.
- Please keep in mind due to the location and fall protection needed, modifying this structure can take 3-5 hands an hour for each location. If these locations are to be utilized, labor will need to reflect this.

HOUSE LIGHTING PLOTS

- Steinmetz Hall has a complete front of house system that includes complete front and high-side lighting systems.
- In concert configuration, LED lighting is fixed over the stage. If the FOH fixtures are to be moved or utilized elsewhere, the rig must be restored on the loadout.
- A standard lighting plot is hung over the stage for proscenium configuration productions. Tours may hang their equipment around the occupied electrics as noted in the Line Set Schedule.
- Any lighting fixture moved or utilized elsewhere must be restored on the loadout.





1/4" = 1'-0"	1/8" = 1'-0"	1/16" = 1'-0"	1/32" = 1'-0"	1/64" = 1'-0"	1/128" = 1'-0"	1/256" = 1'-0"	1/512" = 1'-0"	1/1024" = 1'-0"	1/2048" = 1'-0"	1/4096" = 1'-0"	1/8192" = 1'-0"	1/16384" = 1'-0"	1/32768" = 1'-0"	1/65536" = 1'-0"	1/131072" = 1'-0"	1/262144" = 1'-0"	1/524288" = 1'-0"	1/1048576" = 1'-0"	1/2097152" = 1'-0"	1/4194304" = 1'-0"	1/8388608" = 1'-0"	1/16777216" = 1'-0"	1/33554432" = 1'-0"	1/67108864" = 1'-0"	1/134217728" = 1'-0"	1/268435456" = 1'-0"	1/536870912" = 1'-0"	1/1073741824" = 1'-0"	1/2147483648" = 1'-0"	1/4294967296" = 1'-0"	1/8589934592" = 1'-0"	1/17179869184" = 1'-0"	1/34359738368" = 1'-0"	1/68719476736" = 1'-0"	1/137438953472" = 1'-0"	1/274877906944" = 1'-0"	1/549755813888" = 1'-0"	1/1099511627776" = 1'-0"	1/2199023255552" = 1'-0"	1/4398046511104" = 1'-0"	1/8796093022208" = 1'-0"	1/17592186044416" = 1'-0"	1/35184372088832" = 1'-0"	1/70368744177664" = 1'-0"	1/140737488355328" = 1'-0"	1/281474976710656" = 1'-0"	1/562949953421312" = 1'-0"	1/1125899906842624" = 1'-0"	1/2251799813685248" = 1'-0"	1/4503599627370496" = 1'-0"	1/9007199254740992" = 1'-0"	1/18014398509481984" = 1'-0"	1/36028797018963968" = 1'-0"	1/72057594037927936" = 1'-0"	1/144115188075855872" = 1'-0"	1/288230376151711744" = 1'-0"	1/576460752303423488" = 1'-0"	1/1152921504606846976" = 1'-0"	1/2305843009213693952" = 1'-0"	1/4611686018427387904" = 1'-0"	1/9223372036854775808" = 1'-0"	1/18446744073709551616" = 1'-0"	1/36893488147419103232" = 1'-0"	1/73786976294838206464" = 1'-0"	1/147573952589676412928" = 1'-0"	1/295147905179352825856" = 1'-0"	1/590295810358705651712" = 1'-0"	1/1180591620717411303424" = 1'-0"	1/2361183241434822606848" = 1'-0"	1/4722366482869645213696" = 1'-0"	1/9444732965739290427392" = 1'-0"	1/18889465931478580854784" = 1'-0"	1/37778931862957161709568" = 1'-0"	1/75557863725914323419136" = 1'-0"	1/151115727451828646838272" = 1'-0"	1/302231454903657293676544" = 1'-0"	1/604462909807314587353088" = 1'-0"	1/1208925819614629174706176" = 1'-0"	1/2417851639229258349412352" = 1'-0"	1/4835703278458516698824704" = 1'-0"	1/9671406556917033397649408" = 1'-0"	1/19342813113834066795298816" = 1'-0"	1/38685626227668133590597632" = 1'-0"	1/77371252455336267181195264" = 1'-0"	1/154742504910672534362390528" = 1'-0"	1/309485009821345068724781056" = 1'-0"	1/618970019642690137449562112" = 1'-0"	1/1237940039285380274899124224" = 1'-0"	1/2475880078570760549798248448" = 1'-0"	1/4951760157141521099596496896" = 1'-0"	1/9903520314283042199192993792" = 1'-0"	1/19807040628566084398385987584" = 1'-0"	1/39614081257132168796771975168" = 1'-0"	1/79228162514264337593543950336" = 1'-0"	1/158456325028528675187087900672" = 1'-0"	1/316912650057057350374175801344" = 1'-0"	1/633825300114114700748351602688" = 1'-0"	1/1267650600228229401496703205376" = 1'-0"	1/2535301200456458802993406410752" = 1'-0"	1/5070602400912917605986812821504" = 1'-0"	1/10141204801825835211973625643008" = 1'-0"	1/20282409603651670423947251286016" = 1'-0"	1/40564819207303340847894502572032" = 1'-0"	1/81129638414606681695789005144064" = 1'-0"	1/162259276829213363391578010288128" = 1'-0"	1/324518553658426726783156020576256" = 1'-0"	1/649037107316853453566312041152512" = 1'-0"	1/1298074214633706907132624082305024" = 1'-0"	1/2596148429267413814265248164610048" = 1'-0"	1/5192296858534827628530496329220096" = 1'-0"	1/10384593717069655257060992658440192" = 1'-0"	1/20769187434139310514121985316880384" = 1'-0"	1/41538374868278621028243970633760768" = 1'-0"	1/83076749736557242056487941267521536" = 1'-0"	1/166153499473114484112975882535043072" = 1'-0"	1/332306998946228968225951765070086144" = 1'-0"	1/664613997892457936451903530140172288" = 1'-0"	1/1329227995784915872903807060280344576" = 1'-0"	1/2658455991569831745807614120560689152" = 1'-0"	1/5316911983139663491615228241121378304" = 1'-0"	1/10633823966279326983230456482242756608" = 1'-0"	1/21267647932558653966460912964485513216" = 1'-0"	1/42535295865117307932921825928971026432" = 1'-0"	1/85070591730234615865843651857942052864" = 1'-0"	1/170141183460469231731687303715884105728" = 1'-0"	1/340282366920938463463374607431768211456" = 1'-0"	1/680564733841876926926749214863536422912" = 1'-0"	1/1361129467683753853853498429727072845824" = 1'-0"	1/2722258935367507707706996859454145691536" = 1'-0"	1/5444517870735015415413993718908291383072" = 1'-0"	1/10889035741470030830827987437816582766144" = 1'-0"	1/21778071482940061661655974875633165532288" = 1'-0"	1/43556142965880123323311949751266331064576" = 1'-0"	1/87112285931760246646623899502532662129152" = 1'-0"	1/174224571863520493293247799005065324258304" = 1'-0"	1/348449143727040986586495598010130648516608" = 1'-0"	1/696898287454081973172991196020261297033216" = 1'-0"	1/1393796574908163946345982392040522594066432" = 1'-0"	1/2787593149816327892691964784081045188132864" = 1'-0"	1/5575186299632655785383929568162090376265728" = 1'-0"	1/11150372599265311570767859136324180752531456" = 1'-0"	1/22300745198530623141535718272648361505062912" = 1'-0"	1/44601490397061246283071436545296723010125824" = 1'-0"	1/89202980794122492566142873090593446020251648" = 1'-0"	1/178405961588244985132285746181186892040503296" = 1'-0"	1/356811923176489970264571492362373784081005952" = 1'-0"	1/713623846352979940529142984724747568162011904" = 1'-0"	1/1427247692705959881058285969449495136324023808" = 1'-0"	1/2854495385411919762116571938898990272648047616" = 1'-0"	1/5708990770823839524233143877797980545296095232" = 1'-0"	1/11417981541647679048466287755595961090592190464" = 1'-0"	1/22835963083295358096932575511191922181184380928" = 1'-0"	1/45671926166590716193865151022383844362368761856" = 1'-0"	1/91343852333181432387730302044767688724737523712" = 1'-0"	1/182687704666362864775460604089535377449475047424" = 1'-0"	1/365375409332725729550921208179070754898950094848" = 1'-0"	1/730750818665451459101842416358141509797900189696" = 1'-0"	1/1461501637330902918203684832716283019595800379392" = 1'-0"	1/2923003274661805836407369665432566039191600758784" = 1'-0"	1/5846006549323611672814739330865132078383201517568" = 1'-0"	1/11692013098647223345629478661730264156766403035136" = 1'-0"	1/23384026197294446691258957323460528313532806070272" = 1'-0"	1/46768052394588893382517914646921056627065612140544" = 1'-0"	1/93536104789177786765035829293842113254131224281088" = 1'-0"	1/187072209578355573530071658587684226508262448562176" = 1'-0"	1/374144419156711147060143317175368453016524897124352" = 1'-0"	1/748288838313422294120286634350736906033049794248704" = 1'-0"	1/1496577676626844588240573268701473812066099588497408" = 1'-0"	1/2993155353253689176481146537402947624132199176994816" = 1'-0"	1/5986310706507378352962293074805895248264398353989632" = 1'-0"	1/11972621413014756705924586149611790496528796707979264" = 1'-0"	1/23945242826029513411849172299223580993057593415958528" = 1'-0"	1/47890485652059026823698344598447161986115186831917056" = 1'-0"	1/95780971304118053647396689196894323972230373663834112" = 1'-0"	1/191561942608236107294793378393788647944460747327668224" = 1'-0"	1/383123885216472214589586756787577295888921494655336448" = 1'-0"	1/766247770432944429179173513575154591777842989310672896" = 1'-0"	1/1532495540865888858358347027150309183555685978621345792" = 1'-0"	1/3064991081731777716716694054300618367111371957242691584" = 1'-0"	1/6129982163463555433433388108601236734222743914485383168" = 1'-0"	1/12259964326927110866866776217202473468445487828970766336" = 1'-0"	1/24519928653854221733733552434404946936890975657941532672" = 1'-0"	1/49039857307708443467467104868809893873781951315883065344" = 1'-0"	1/98079714615416886934934209737619787747563902631766130688" = 1'-0"	1/196159429228833773869868419475239575495127805263532271376" = 1'-0"	1/392318858457667547739736838950479150990255610527064542752" = 1'-0"	1/784637716915335095479473677900958301980511221054129085504" = 1'-0"	1/1569275433830670190958947355801916603961022442108258171008" = 1'-0"	1/3138550867661340381917894711603833207922044884216516342016" = 1'-0"	1/6277101735322680763835789423207666415844089768433032684032" = 1'-0"	1/12554203470645361527671578846415332831688179536866065368064" = 1'-0"	1/25108406941290723055343157692830665663376359073732130736128" = 1'-0"	1/50216813882581446110686315385661331326752718147464261472256" = 1'-0"	1/100433627765162892221372630771322626653505436294928522944512" = 1'-0"	1/200867255530325784442745261542645253307010872589857045889024" = 1'-0"	1/401734511060651568885490523085290506614021745179714091778048" = 1'-0"	1/803469022121303137770981046170581013228043490359428183556096" = 1'-0"	1/1606938044242606275541962092341162026456086980718856367112192" = 1'-0"	1/3213876088485212551083924184682324052912173961437712734224384" = 1'-0"	1/6427752176970425102167848369364648105824347922875425468448768" = 1'-0"	1/12855504353940850204335696738729296211648695845750850936897536" = 1'-0"	1/25711008707881700408671393477458592423297391691501701873795072" = 1'-0"	1/51422017415763400817342786954917184846594783383003403747590144" = 1'-0"	1/102844034831526801634685573909834369693189566766006807495180288" = 1'-0"	1/205688069663053603269371147819668739386379133532013614990360576" = 1'-0"	1/411376139326107206538742295639337478772758267064027229980721152" = 1'-0"	1/822752278652214413077484591278674957545516534128054459961442304" = 1'-0"	1/1645504557304428826154969182557349915091033068256108919922884608" = 1'-0"	1/329100911460885765230993836511469983018206613651221783984577216" = 1'-0"	1/658201822921771530461987673022939966036413227302443567969154432" = 1'-0"	1/1316403645843543060923975346045879932072826454604887135938308864" = 1'-0"	1/2632807291687086121847950692091759864145652909209774271876617728" = 1'-0"	1/5265614583374172243695901384183519728291305818419548543753235456" = 1'-0"	1/10531229166748344487391802768367039456582611376839097087506470912" = 1'-0"	1/21062458333496688974783605536734078913165222753678194175012941824" = 1'-0"	1/42124916666993377949567211073468157826330445507356388350025883648" = 1'-0"	1/84249833333986755899134422146936315652660891014712776700051767296" = 1'-0"	1/168499666667973511798268844293872631305321782029425553400103534592" = 1'-0"	1/336999333335947023596537688587745262610643564058851106800207069184" = 1'-0"	1/673998666671894047193075377175490525221287128117702213600414138368" = 1'-0"	1/1347997333343788094386150754350981050442574256235404427200828276736" = 1'-0"	1/2695994666687576188772301508701962100885148512470808854401656553472" = 1'-0"	1/5391989333375152377544603017403924201770297024941617708803313106944" = 1'-0"	1/10783978666752304755089206034807848403540594049883235417606626213888" = 1'-0"	1/21567957333504609510178412069615696807081188099766470835213252427776" = 1'-0"	1/43135914667009219020356824139231393614162376199532941670426504855552" = 1'-0"	1/86271829334018438040713648278462787228324752399065883340853009711104" = 1'-0"	1/172543658668036876081427296556925474456649504798131766681706019422208" = 1'-0"	1/345087317336073752162854593113850948913299009596263533363412038844416" = 1'-0"	1/690174634672147504325709186227701897826598019192527066726824077688832" = 1'-0"	1/1380349269344295008651418372455403795653196038385054133453648155377664" = 1'-0"	1/2760698538688590017302836744910807911306392076770108266907296310755328" = 1'-0"	1/5521397077377180034605673489821615822612784153540216533814592621510656" = 1'-0"	1/11042794154754360069211346979643231645225568307080433067629185243021312" = 1'-0"	1/22085588309508720138422683959286463290451136614160866135258370486042624" = 1'-0"	1/44171176619017440276845367918572926580902273228321732270516740972085248" = 1'-0"	1/88342353238034880553690735837145853161804546456643464541033481944170496" = 1'-0"	1/176684706476069761107381471674291706323609092913286929082066963888340992" = 1'-0"	1/353369412952139
--------------	--------------	---------------	---------------	---------------	----------------	----------------	----------------	-----------------	-----------------	-----------------	-----------------	------------------	------------------	------------------	-------------------	-------------------	-------------------	--------------------	--------------------	--------------------	--------------------	---------------------	---------------------	---------------------	----------------------	----------------------	----------------------	-----------------------	-----------------------	-----------------------	-----------------------	------------------------	------------------------	------------------------	-------------------------	-------------------------	-------------------------	--------------------------	--------------------------	--------------------------	--------------------------	---------------------------	---------------------------	---------------------------	----------------------------	----------------------------	----------------------------	-----------------------------	-----------------------------	-----------------------------	-----------------------------	------------------------------	------------------------------	------------------------------	-------------------------------	-------------------------------	-------------------------------	--------------------------------	--------------------------------	--------------------------------	--------------------------------	---------------------------------	---------------------------------	---------------------------------	----------------------------------	----------------------------------	----------------------------------	-----------------------------------	-----------------------------------	-----------------------------------	-----------------------------------	------------------------------------	------------------------------------	------------------------------------	-------------------------------------	-------------------------------------	-------------------------------------	--------------------------------------	--------------------------------------	--------------------------------------	--------------------------------------	---------------------------------------	---------------------------------------	---------------------------------------	--	--	--	---	---	---	---	--	--	--	---	---	---	--	--	--	---	---	---	---	--	--	--	---	---	---	--	--	--	--	---	---	---	--	--	--	---	---	---	---	--	--	--	---	---	---	--	--	--	--	---	---	---	--	--	--	---	---	---	---	--	--	--	---	---	---	--	--	--	--	---	---	---	--	--	--	---	---	---	---	--	--	--	---	---	---	--	--	--	--	---	---	---	--	--	--	---	---	---	---	--	--	--	---	---	---	--	--	--	---	---	---	---	--	--	--	---	---	---	--	--	--	--	---	--	--	---	---	---	--	--	--	--	---	---	---	--	--	--	---	---	---	---	--	--	--	---	---	---	--	--	--	--	---	-------------------

DRESSING ROOM / WARDROBE / GREEN ROOM INFORMATION

DRESSING ROOMS

Dressing rooms are located at level 2, stage level, and basement level. All rooms are equipped with showers, toilets, mirrors, and chairs. Each dressing room is also equipped with the capability for hard-wired internet.

Level 2		
Room 2A	10-12 persons	18'W x 14'L
Room 2B	2-4 persons	10'W x 11'L
Room 2C	10-12 persons	18'W x 14'L
Room 2D / Visiting PM Office	2-4 persons	14'W x 10'L
Stage Level		
Room A	2-4 persons	10'W x 11'L
Room B	2-4 persons	10'W x 11'L
Room C	2-4 persons	10'W x 11'L
Room D	Visiting Production Office	9'W x 22'L
Basement Level		
Room Chorus 1	18-20 persons	12'W x 36'L
Room Chorus 2	18-20 persons	12'W x 36'L
Room Musicians 1	12 persons	16'W x 19'L
Room Musicians 2	12 persons	16'W x 23'L

DRESSING ROOM

NUMBER OF PEOPLE

DIMENSIONS

Wardrobe and Laundry Room

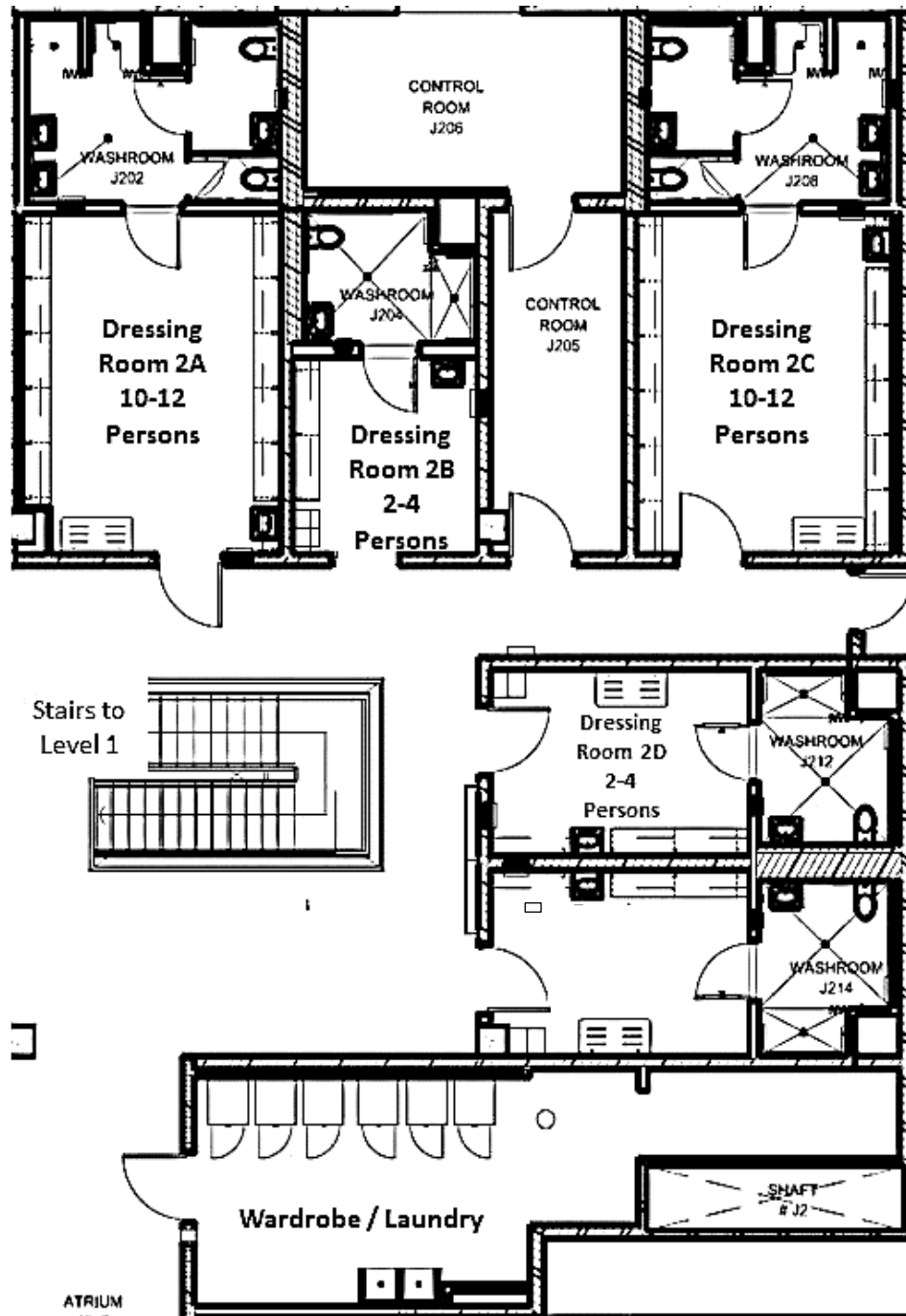
The wardrobe and laundry room are located on level 2 as part of the Wardrobe room. Three washers, three dryers and a double sink reside in this room. Use of the equipment requires an I.A.T.S.E. crew member.

Performer's Lounge / Green Room / Catering

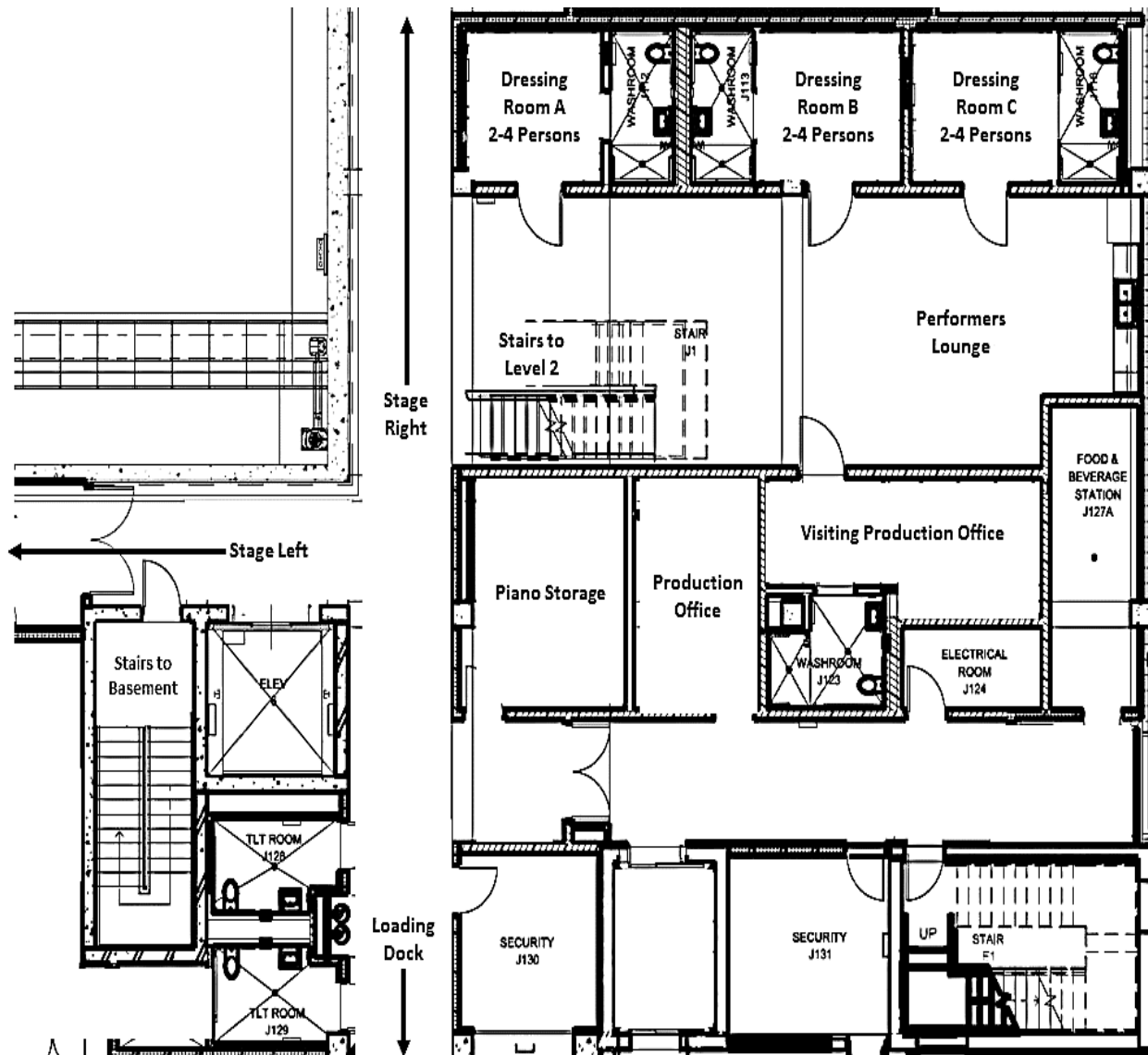


The Steinmetz Hall Performer's Lounge is in an open area located on stage level and measures 17'W x 15'L. It holds a small kitchen area with a microwave, coffee maker, sink, and refrigerator. The stage level dressing rooms are located off the lounge.

BACKSTAGE MAP – LEVEL 2



BACKSTAGE MAP – LEVEL 1 / STAGE LEVEL



BACKSTAGE MAP – BASEMENT LEVEL

