

# ALEXIS AND JIM PUGH THEATER

## TECHNICAL SPECIFICATIONS



Dr. Phillips Center for the Performing Arts

ORLANDO, FL 32801

[www.drphillipscenter.org](http://www.drphillipscenter.org)

## TABLE OF CONTENTS

GENERAL CONTACT INFORMATION	3
MAP & DIRECTIONS	5
SEATING INFORMATION AND CAPACITY	7
STAGE SPECIFICATIONS	11
RIGGING	12
CENTER-LINE SECTION	15
SOUND AND COMMUNICATIONS	16
VIDEO INFORMATION	20
LIGHTING INFORMATION	21
DRESSING ROOM / GREEN ROOM INFORMATION	25

## ADDRESS & CONTACTS

**Dr. Phillips Center for the Performing Arts**  
**155 East Anderson Street, Orlando, Florida 32801**

- Administrative Phone 407.839.0119
- Fax Number 407.839.0116
- Box Office 407.358.6603
- Security/Stage Door 407.992.1777

## PRODUCTION

A production manager is generally assigned to each visiting production seven (7) weeks out from arrival. S/he will reach out for advancing all needs. Prior to that, inquiries may be sent to **[productionmanagement@drphillipscenter.org](mailto:productionmanagement@drphillipscenter.org)**, which will reach the entire production management staff.

### Production Labor

The Alexis and Jim Pugh Theater at the Dr. Phillips Center for the Performing Arts is staffed by in-house technicians. Staffing is determined by the production's needs in coordination between the assigned dpc Production Manager and visiting production.

## OTHER CONTACTS

Guest Services Team	<a href="mailto:fohadvance@drphillipscenter.org">fohadvance@drphillipscenter.org</a>
Security Team	<a href="mailto:security@drphillipscenter.org">security@drphillipscenter.org</a>
Craft Services (Catering)	<a href="mailto:foodbeveragemanagement@dpc.org">foodbeveragemanagement@dpc.org</a>





## MAP AND DIRECTIONS

The Dr. Phillips Center is conveniently located in Downtown Orlando and can be reached by several routes.

- Main Building Guest entrance: 445 South Magnolia Avenue
- Administrative offices: 155 East Anderston Street
- Loading dock and cast & crew arrivals: 470 South Rosalind Avenue

### VIA WEST ON I-4

- Exit to South Street (Exit 82B)
- Exit curves right
- Right onto South Street
- Right onto Orange Avenue
- Left onto Anderson Street
- Left onto Rosalind Avenue – loading dock is on the left

### VIA EAST ON I-4

- Exit to Anderson Street (Exit 82C)
- Left on Anderson Street
- Left onto South Rosalind Avenue – loading dock is on the left

### VIA WEST ON 408

- Exit to Orange Avenue/SR-527 (exit 10A)
- At the bottom of the ramp, turn right onto South Lucerne Circle East
- Right onto South Orange Avenue (northbound) – get in the second lane from left
- Loading dock will be on your left after passing under the 408 and past the first light (Anderson St.)

### VIA EAST ON 408

- Exit to Rosalind Avenue exit (Exit 11A) – stay in the left lane
- Left onto South Street – drive around the building counter-clockwise
- Left onto Magnolia Avenue – pass under the DPC canopy
- Left onto Anderson Street
- Left onto Rosalind Avenue – the loading dock is on your left

## VEHICLE PARKING

Parking on site is limited. Please discuss this with a dpc Production Manager during the Advance, prior to arrival. The Alexis and Jim Pugh Theater is typically allotted one (1) loading dock for load-in and load-out. It should not be used for general vehicle parking.

Parking garages are located nearby for cars.

All parking arrangements must be discussed with a dpc Production Manager prior to arrival for necessary bay assignment.

## LOADING DOCKS

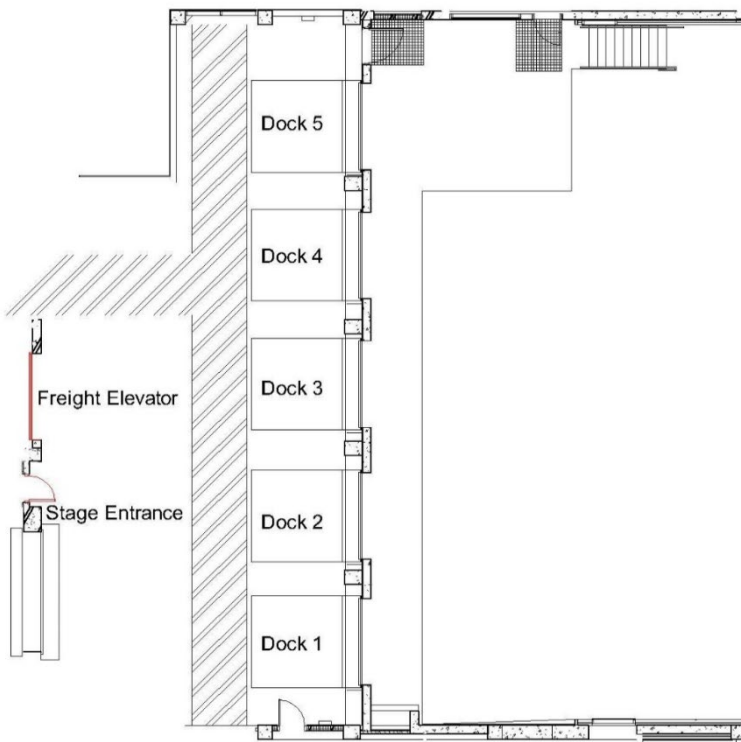
There are five (5) loading docks located in the rear of the building off South Rosalind Avenue, shared by the entire building. The Loading Docks are 4' high with deck levelers. The doors into the cross-dock receiving area are 8'w x 12'h. A 50a shore power connection is available at Bay 1 and Bay 5.



## STEINMETZ HALL

Elevator to  
JIM & ALEXIS  
PUGH THEATER

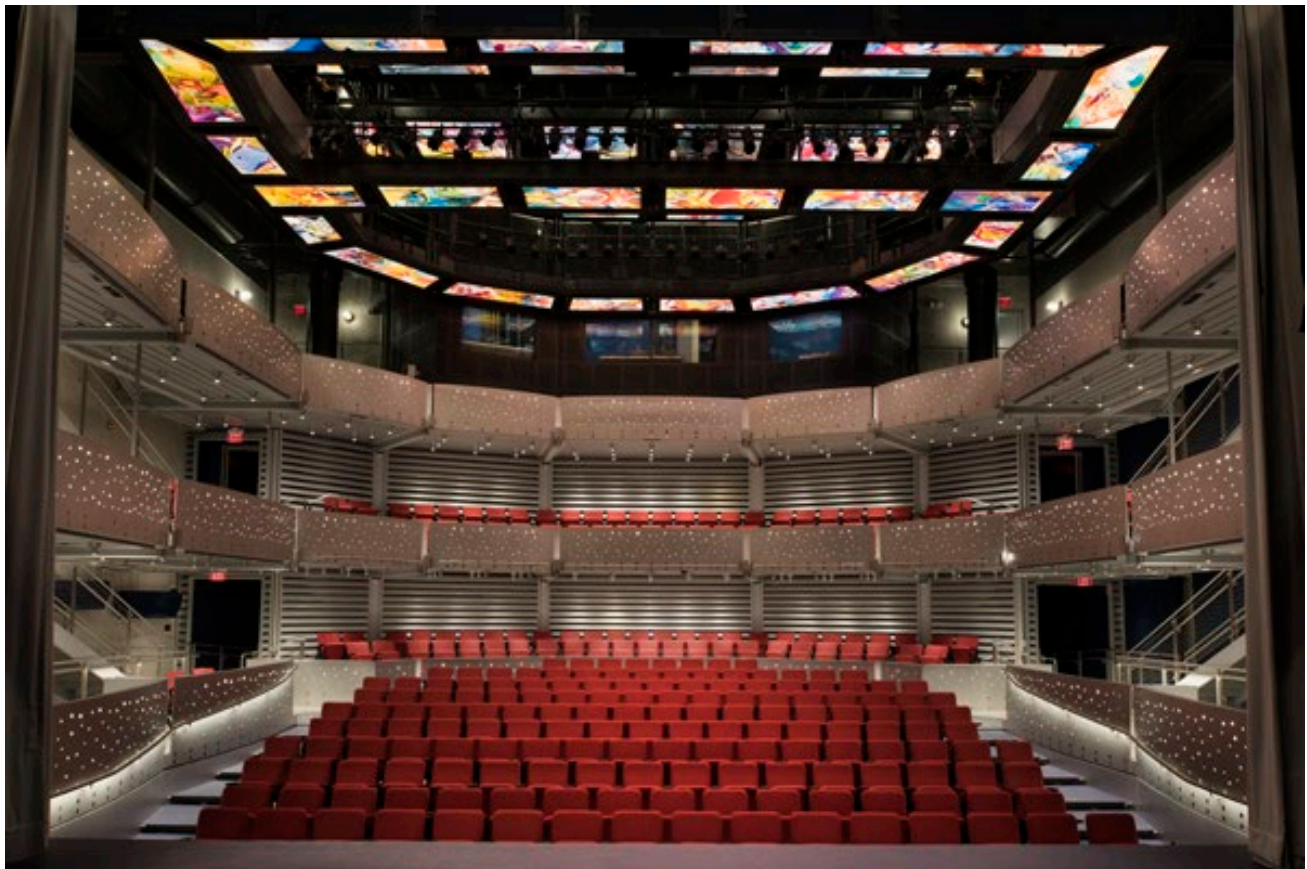
THE WALT  
DISNEY THEATER



## SEATING INFORMATION AND CAPACITY

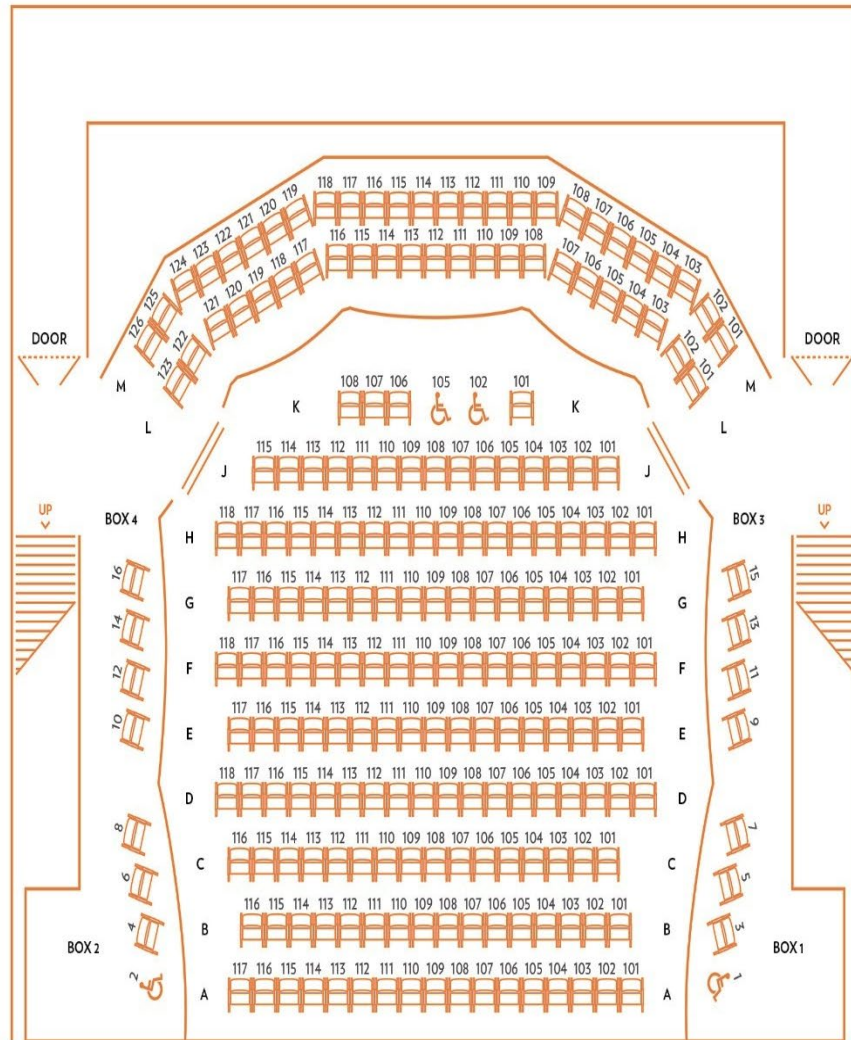
The seating in the Alexis and Jim Pugh Theater is not fixed. The main House floor sits on a manual scissor-lift riser system, which allows the room to be configured to different seating layouts including standard tier, cabaret tier and flat floor at stage level.

Lower Orchestra Level – 225 Seats Total	
Rows A – M	225 Seats
Upper Balcony Level – 69 Seats Total	
Upper Level Rows A – B	69 Seats
Cabaret Style – 249 Seats Total	
Rows A - M	Seats



Standard Seating Configuration

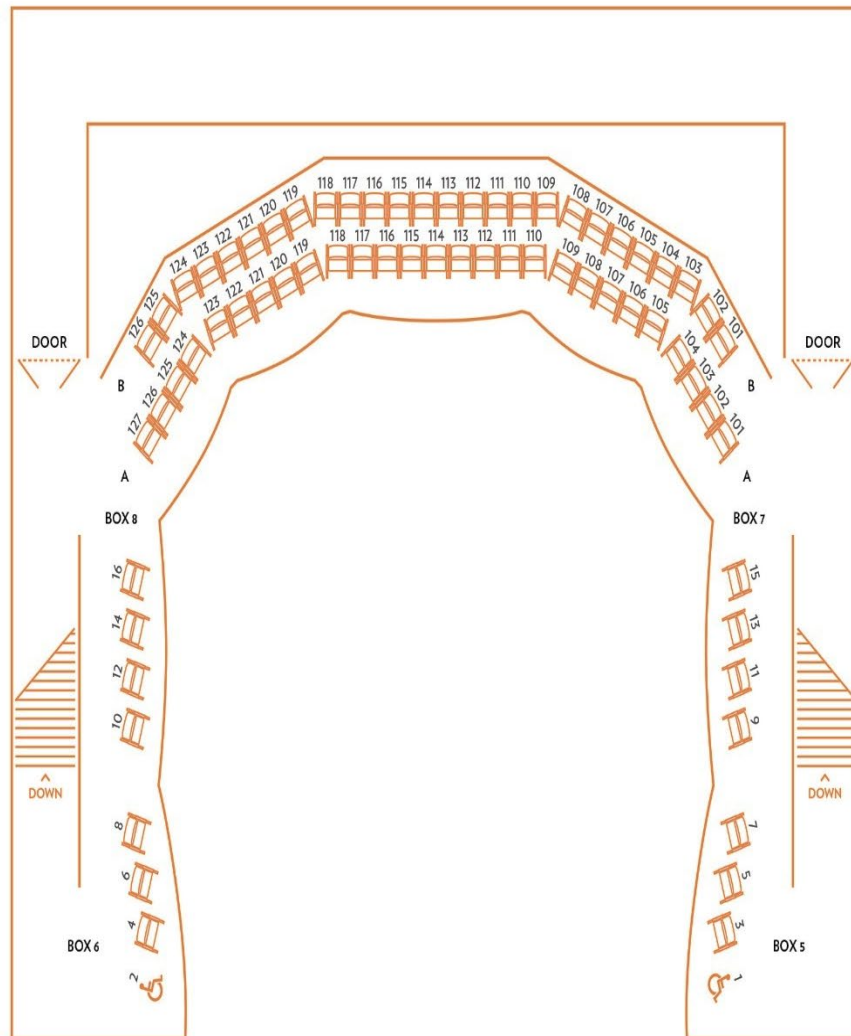
## Standard Seating Plan, Main Floor



225 Seats in Main Level  
 223 Seats in Main Level with Full ADA Usage  
 000 Wheelchair Positions  
 Full Theater Capacity:  
 294 Seats  
 292 Seats with Full ADA Usage



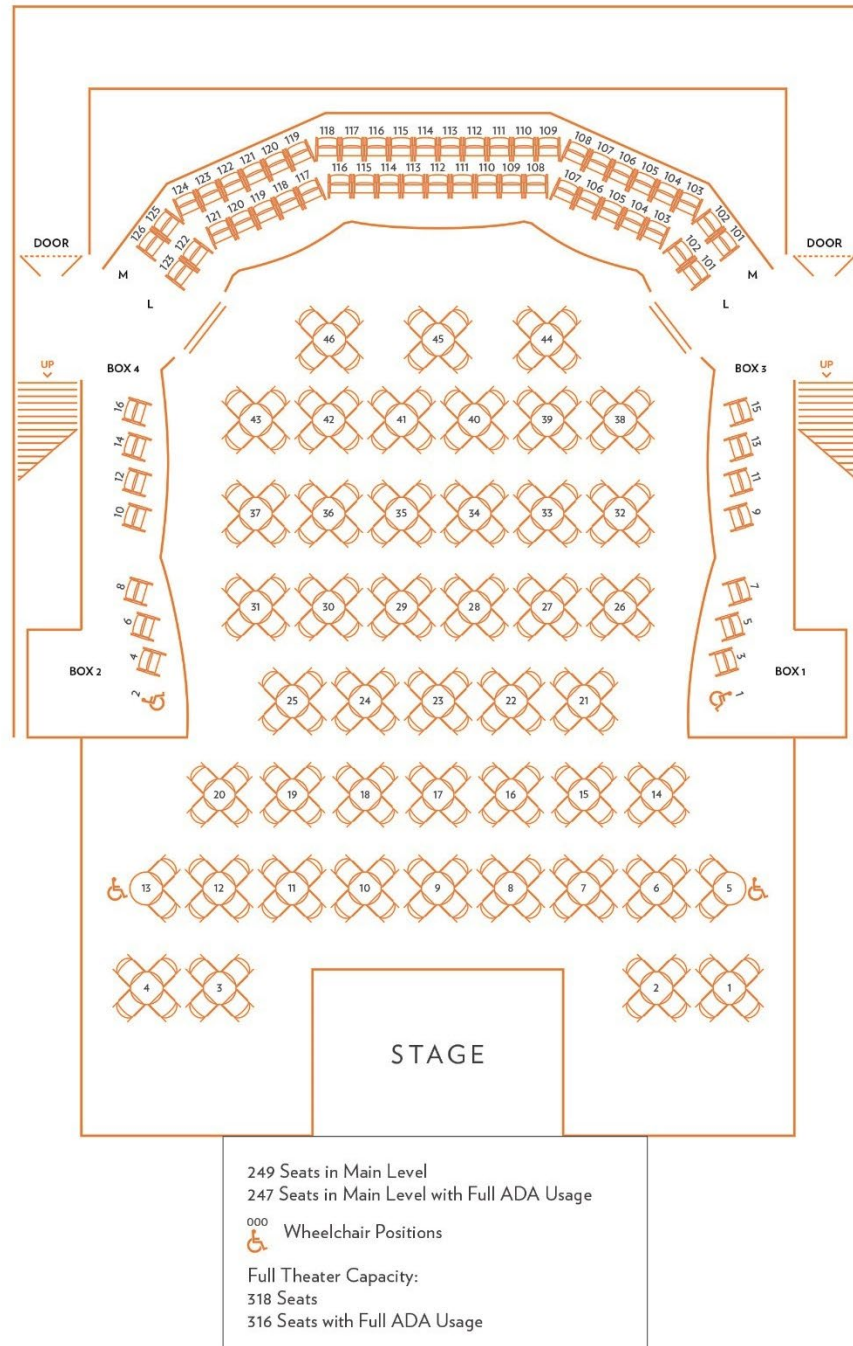
## Standard Seating Plan, Balcony



69 Seats in Gallery Level

 Wheelchair Positions

## Cabaret Seating Plan, Main Floor



## STAGE SPECIFICATIONS

<b>HEIGHT OF GRID UNDERSIDE</b>	36' 4"
<b>HEIGHT OF PROSCENIUM OPENING</b>	17'
<b>WIDTH OF PROSCENIUM OPENING</b>	36'
<b>HEIGHT OF GALLERIES</b>	
Upper Loading Gallery	27' 6"
Operating Gallery/ Pin Rail SR	Stage Floor Level
Clearance to Underside of catwalks	27'
Upstage catwalk	None
<b>DEPTH OF STAGE (from Plaster Line)</b>	27'
<b>WIDTH OF STAGE</b>	55' 10"
Width of Proscenium Opening	36'
Width of Opening of Main Curtain	28' 8"
Flys Lock Rail Working Area SR	4' 2"
Width of stage (center to SR)	26' 10"
Width of stage (center to SL)	29'
<b>CENTER STAGE TO CATWALK SR</b>	24'
<b>CENTER STAGE TO CATWALK SL</b>	24'
<b>MANUAL SIDE MASKING TABS UP TO DOWN</b>	25' 10" off CL

The Stage Floor is a semi sprung floor with double layer tongue and groove plywood on aluminum sleepers over rubber blocks and finished with black masonite/benelux. The rubber blocks are surrounded by a steel channel which limits over-decompression.

Any damage to floor incurred by a production must be restored by the production.

Fog, Smoke, Pyrotechnics, Cold Sparks and Open Flame are not permitted in the theater without permitting and fire watch personnel (fees apply). Requests must be made 21 days prior to the first usage. Certain low fog and haze have no such requirements.

## RIGGING SPECIFICATIONS

The Alexis and Jim Pugh theater has an under-hung, single-purchase counterweight system with 21 hand-operated lines on 16" centers. The operating position is stage right at stage level. There is no Grid in the Alexis and Jim Pugh Theater. All fly rail operations are to be performed by dpc personnel.

- 21 Line Sets (single Purchase / Stage Locking Rail)
- Battens are 40'-0", single pipe
- Max out trim is 34'-7" to stage
- No Fire Curtain
- Counterweights are 30# each
- No Grid / Loft Blocks Mounted to I – Beams at 35'h

Grid Height	36' 4" to underside
Travel Distance	30' 4" (from 4' pipe in position)
Max Live Load Weight	1,000 lbs.
Total Weight Available	12,600 lbs.
Length of Battens	40'

## House Curtain

The Main House Curtain is a split traveler with a three-foot overlap operated from SR. It is located 1' 10" upstage from the plaster line.

## SOFT GOODS INVENTORY

	Unit	Height	Width
House Curtain (white)	1	28'	45' 8"
Borders	1	10'	40'
Borders	1	8'	40'
Legs (pair)	1	24' 6"	8'
Legs (pair)	1	24' 6"	11'
Black Traveler Drapes	2	24'	43'
PVC custom-welded FP screen/Cream Cyc	1	25'-6"	40'

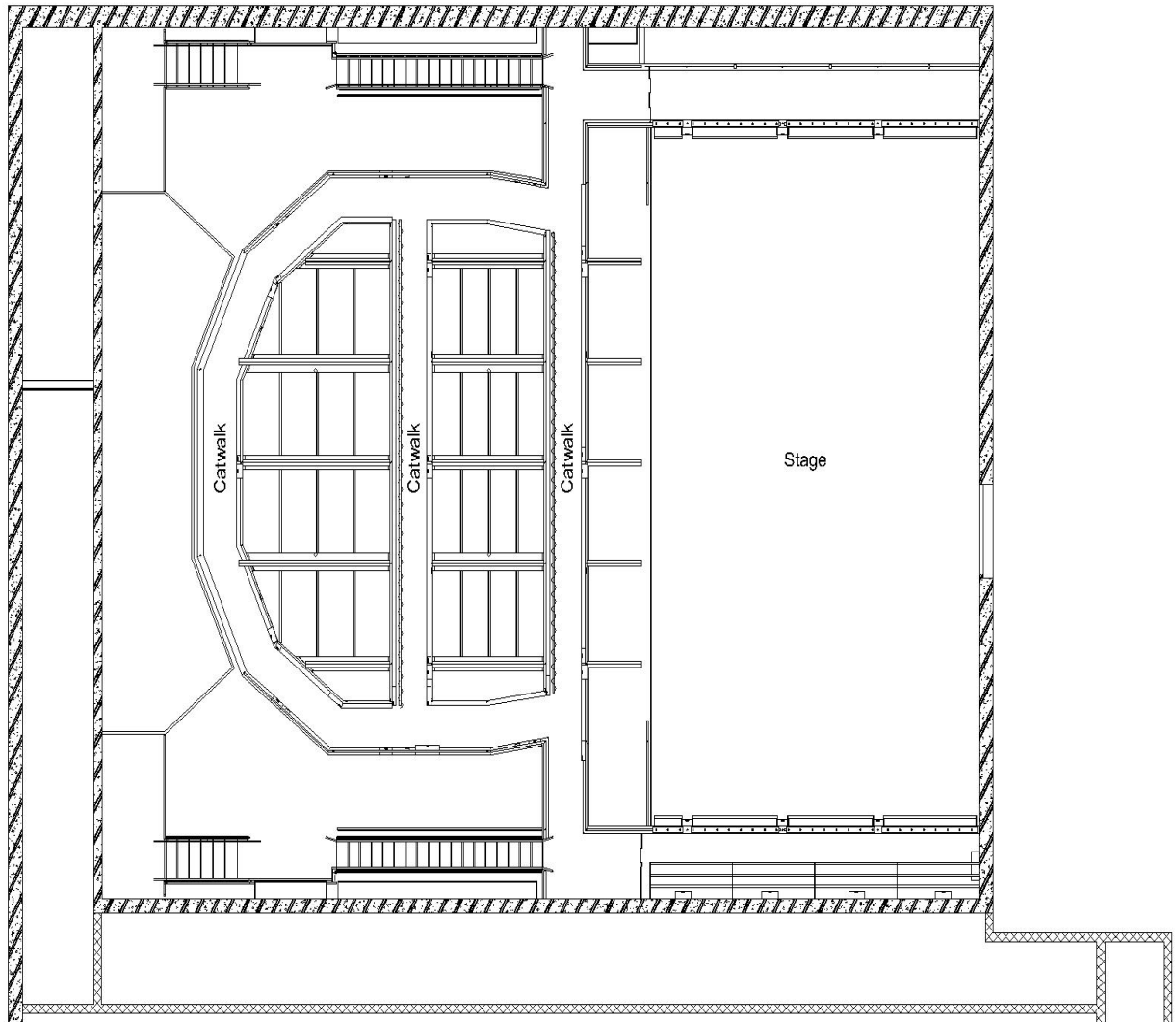


## Line Schedule

LINE #	Distance from Plaster line	HOUSE HANG	WEIGHT	# OF BRICKS	TRIM HEIGHT (Rep., White cloth spike)/NOTES
1	0'-6"	Header	570 #	19	17'-0"
2	1'-10"	Main Curtain (Traveler)	750#	25	traveler track = 6 bricks
3	3'-2"	Overhead Stage Monitors	60#	2	21'-1" to bottom of pipe
4	4'-6"	1st Electric	540#	18	23'-0" to bottom of pipe
5	5'-10"				
6	7'-2"	1st Legs	90#	3	
7	8'-6"				
8	9'-10"	Border # 1	60#	2	18'-9" to bottom of border
9	11'-2"	2nd Legs	90#	3	
10	12'-6"	2nd Electric	600#	20	23'-0" to bottom of pipe
11	13'-10"				
12	15'-2"	Border #2	60#	2	18'-4" w/Screen in, White Spike. 20'-4" w/Screen Out, Green Spike - to bottom of border.
13	16'-6"	Projection Screen	90#	3	17'-8 1/2" to bottom of screen. White Spike, Screen in.
14	17'-10"	Mid-Stage Traveler w/Track	420#	14	traveler track = 5 bricks
15	19'-2"				
16	20'-6"	Border # 3	60#	2	19'-6" to bottom of border.
17	21'-10"	3rd Electric	540#	18	21'-0" to bottom of pipe.
18	23'-2"				
19	24'-6"	Cyc Electric	330#	6	23'-0" to bottom of pipe.
20	25'-10"	Upstage Traveler w/Track	420#	14	traveler track = 5 bricks.
21	27'-2"	PVC custom welded RP/FP screen/cyc Cream. 21'-5 1/2" x 40' wide	120#	4	Bottom piped. Out trim keeps from blocking AC intake.

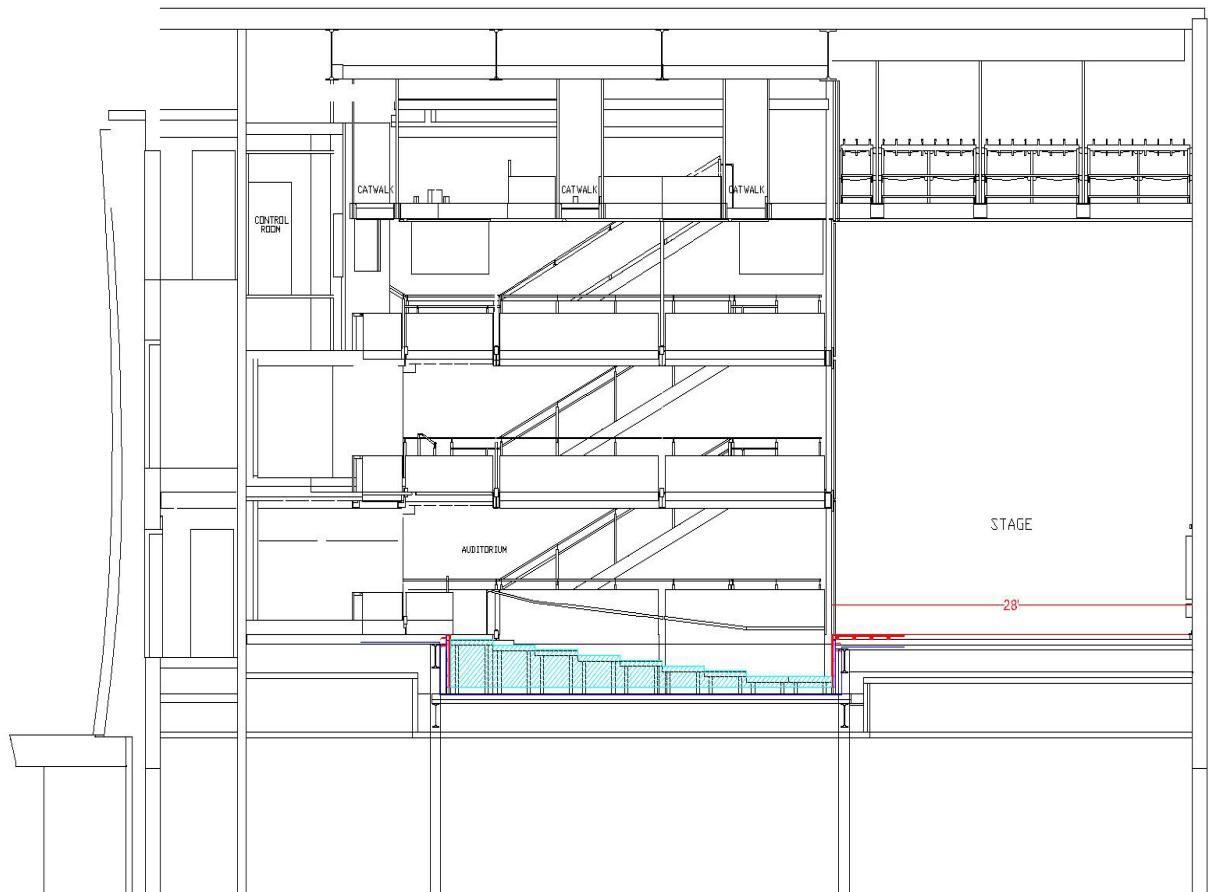
## Rigging Steel and Catwalks

Alexis & Jim Pugh Theater  
Rigging Steel & Catwalks



## Center-Line Section

### Alexis & Jim Pugh Theater Centerline Section



## SOUND AND COMMUNICATIONS

The in-house audio system consists of left-right speakers each made up of Meyer Sound (2) Meyer Sound UPQ-1P loudspeakers with (1) UPJ loudspeaker supplementing coverage in the center cluster and Meyer Sound 500-HP subwoofers (stage left and stage right). Front fills are UPMs. PA processing is QSC QSYS fed Dante from a Yamaha CL5.

The system is also configurable to amplify passive speakers with (16) channels of amplification by (2) QSC CX168 8- channel amplifiers. Inputs are located on all audio patch panels throughout the theater with NL4 connections.

### Mix Position

There are 2 mixing positions available, using the same Yamaha CL5 house console.

Control Booth – Located in the rear of the 3rd level approx. 48' from the stage.

House Mix – Located in the rear, orchestra level (underneath first balcony) approx. 41' from stage. This mix position requires the removal of 11 seats. All seat holds for mixing positions must be discussed with Programming and Production Staff prior to tickets going on sale.

Please see image below:





## Audio Power

Audio power for the Alexis and Jim Pugh Theater is provided through a K-13 transformer delivering clean isolated power to all audio and video locations throughout the theater. Power locations include: all floor pockets, SL, SR, upstage, HL, HR, balcony ceilings, catwalk, and tech booth.

## Patching

Individual discrete patching is available in all mix positions as well as DSL and DSR patch points. Analog audio, digital audio, BNC video and Clear-Com party lines are available patches on stage boxes. Main patching is done through a Dante networking system. This is done through the Yamaha Rio 3234 D2 stage rack. There is also a Yamaha Rio 1608 D2 stage rack available for more patch points. The 1608 D2 stage rack has the capability of floating wherever any patch points need to be made.

## Communication

Clear-Com Encore 4 channel intercom system with wired connections and 5 wireless FreeSpeak packs with an Arcadia frame. Wired Coms can be positioned at any audio patch point in the theater, including the control booth, spotlight, amp room, wings (including the fly rail) and stage manager position.

## Stage Manager Console

The Stage Manager position is in the booth, house right. The desk includes a audio monitor from the room and a microphone to page to back of house & dressing rooms.

## Audio Equipment List

### Wireless Microphone System

1	SHURE UA845UWB Antenna Distribution system
3	SHURE AD4Q Axient Digital 4 Channel Microphone Receiver
1	SHURE AD600 Axient Digital Spectrum Manager
1	SHURE AD610 Showlink Access Point
8	SHURE ADX1:G57 Wireless Belt Pack Transmitter
8	SHURE MX184 Supercardioid Lavalier Microphone
8	SHURE ADX2/K9:G57 Wireless Handheld Transmitter, KSM9 Capsule
2	SHURE SBRC Rackmount Battery Charger Chassis
4	SHURE SBM910 Battery Charger Module: SB910 Battery
4	SHURE SBM920 Battery Charger Module: SB920 Battery
16	SHURE SB910 Belt Pack Rechargeable Battery
16	SHURE SB910 Handheld Rechargeable Battery
2	SHURE PA805SWB Passive Antenna (470-952MHZ)

### Additional Available Microphones

2	AKG C414 XLS
1	AKG D112
6	CROWN PCC-160
2	DPA 4006
2	DPA 4011
2	DPA 4021
2	EARTHWORKS SR77
11	SHURE SM57
10	SHURE SM58
13	SHURE BETA 58A
1	SHURE SM63
1	SHURE 55sh
6	SENNHEISER MD421 11

### DI

2	RADIAL PRO D2 STERO DI
1	WHIRLWIND PCDI
2	COUNTRYMAN FET85
3	BSS AR-133 ACTIVE DI

### Additional Items Available

2	8 Ch. Sub Snake
1	8 Ch. In 4 Ch. Out Sub Snake

## VIDEO INFORMATION

Normally hung on line #21, the upstage “cyclorama” in the Alexis and Jim Pugh Theater is a custom-welded front projection screen and is often used for full-size video projection.

A smaller, 9' x 16' FP screen is also available and may be hung on other lines with projection from the balcony rail or a lineset.

A 12k projector is available (for a fee) with lensing to allow for use either mounted on the balcony rail or from a line-set.



## LIGHTING INFORMATION

The Alexis and Jim Pugh Theater has a full LED House lighting plot. This rig that can typically light any type show performing in the space. The room contains the fixtures below and does not have any loose inventory. Any additions will require a rental, and any adjustments may require a lighting call. Our Lighting Plot is also available upon request.

## LIGHTING EQUIPMENT

### Control

1	ETC Eos TI Console
1	ETC ION Classic
288	ETC Sensor Dimmers

### Followspots

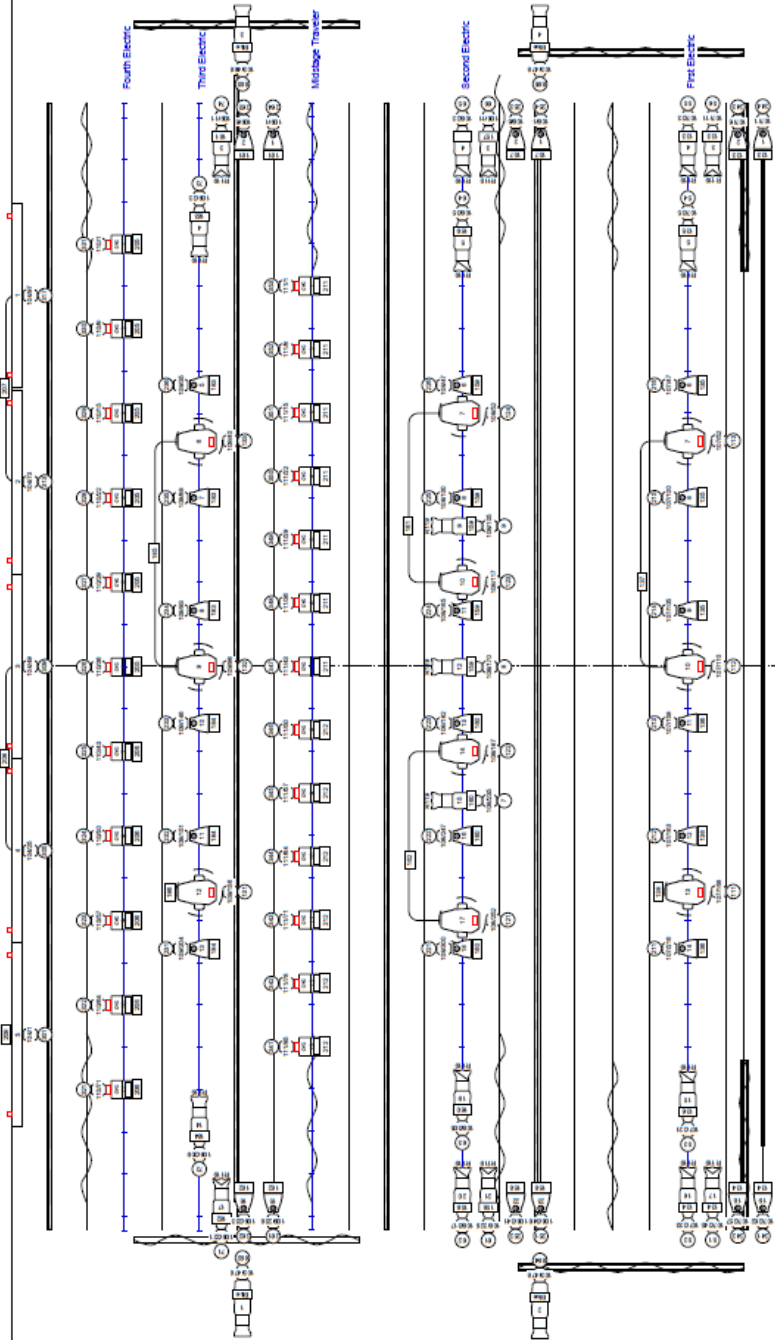
2	Robe T11 Profiles with Follow Spot Handles located on 3 <sup>rd</sup> level on either side of the booth
---	---

### Alexis and Jim Pugh Theater Lighting Equipment

30	ETC ColorSource Par Deep Blue
12	HES Lonestar
Upper Cyc	ETC ColorSource Cyc
Lower Cyc	ETC ColorSource Linear Deep Blue
6	50-degree ETC Lustr 3 w/XDLT Barrel
20	36-degree ETC Lustr 3 w/XDLT Barrel
22	26-degree ETC Lustr 3 w/XDLT Barrel
8	19-degree ETC Lustr 3 w/XDLT Barrel

### Dimensional Information

Plaster line to 2 <sup>nd</sup> Tier Rail	35' at 19° angle
Plaster line to Catwalk 1	28' at 79° angle
Plaster line to Catwalk 2	33' at 56° angle
Plaster line to Catwalk 3	43' at 37° angle
Curtain line to center of Alternate Sound Mixing Position	41'
Curtain line to Lighting Booth	48'



## General Notes

1. All fixtures on a pipe must be safely cabled to the pipe
2. Electric 1-3 trim heights are being set at install  
Electric 4 trim height is 25'
3. Down pars have a 7.5" top hat
4. Fixtures on the same circuit jump power
5. Electrics 1-3 have 6' tail downs installed on both ends of the pipes
6. Tail down pars have a 7.5" Barndoor.

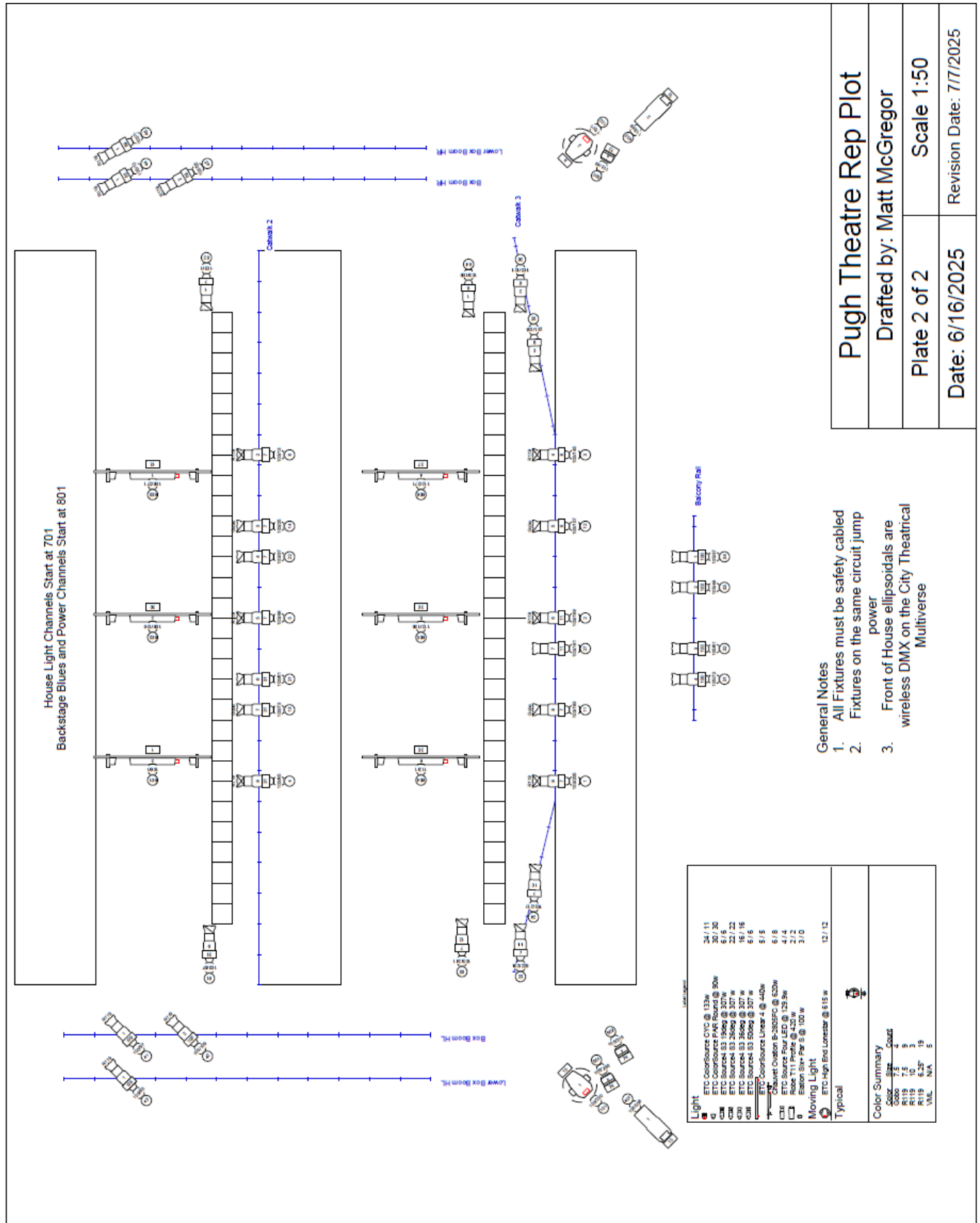
Light		24/11
ETC CoreSource C1/C @ 133w		30/30
ETC CoreSource PAX R100 @ 90w		30/30
ETC CoreSource C1/C @ 133w		32/32
ETC Source24 S3 3500g @ 307 W		16/16
ETC Source24 S3 3500g @ 307 W		6/6
ETC CoreSource Linear 4 @ 440w		5/5
Chained Output B-2505FC @ 520w		6/8
ETC CoreSource C1/C @ 133w		7/7
ETC CoreSource C1/C @ 133w		2/2
ETC CoreSource C1/C @ 133w		3/0
Moving Light		12/12
ETC High End Luster @ 615 W		
Typical		
Color Summary		
Color	Chart	
Color	7.5	4
R115	7.5	9
R115	6.5	19
VML	NA	5

### Pugh Theatre Rep Plot

Drafted by: Matt McGregor

Plate 1 of 2	Scale 1:50
--------------	------------

Revision Date: 7/7/2025	Date: 6/16/2025
-------------------------	-----------------





(1.3)	7	8	9
(1.2)	4	5	6
(1.1)	1	2	3

1 **Front Wash**  
Scale: 1:200

23	24
21	22

2 **Front Texture**  
Scale: 1:200

(3.3)	231	232	233	234	235	236
	(3.4)	Odd				
(3.2)	221	222	223	224	225	226
	(3.5)	Even				
(3.1)	211	212	213	214	215	216

3 **Par Wash**  
Scale: 1:200

	(4.3)	131	132	133	
(4.5)	(4.2)	121	122	123	124
	(4.1)	111	112	113	

(4.4) 101 4 **Movers** 102  
Scale: 1:200

321 322 323 324 325 326 327 328 329 330 331
(5.1)
(5.2)
301-304 305-308 309-312 313-316 317-320

5 **CYC**  
Scale: 1:200

71 72	73 74
261 262	263 264
61 62 63	(6.1) (6.2) 64 65 66
251 252	253 254
51 52 53	54 55 56
241 242	243 244

6 **Highsides**  
Scale: 1:200

43 41	44 46
(7.1) 42	45 (7.2)
(7.3) Balcony Rail	
31 32 33 34	

7 **Box Booms**  
Scale: 1:200

- (8) House Lights 701-?, 601-606(Ovations)  
Front Specials 21-27 (8.1)  
Front Specials Aisles 81-84  
Backstage Blues 891-896  
LED Power 801-?  
Midstage Curtain Wash 341-353  
Spot Lights 401, 402  
Spot Works 301, 302  
Numbers in circles indicate group numbers

## Pugh Theatre Magic Sheet



## DRESSING ROOM / GREEN ROOM INFORMATION

There are two (2) dressing rooms available for the Alexis and Jim Pugh Theater, located upstage of the theater.

Dressing Room	Number of People	Dimensions
Room Pugh 1	6 persons	10'W x 20'L
Room Pugh 2	6 persons	10'W x 17' 6"L

A small green room area, approximately 20' x 20' outside the two dressing rooms and is also the passageway from the freight elevator to the stage.

## Dressing Room Plan

