

# DeVos Family Room

## TECHNICAL SPECIFICATIONS



Dr. Phillips Center for the Performing Arts

**ORLANDO, FL 32801**

[www.drphillipscenter.org](http://www.drphillipscenter.org)

## TABLE OF CONTENTS

GENERAL CONTACT INFORMATION	3
MAP & DIRECTIONS	5
ROOM SPECIFICATIONS	6
SOUND AND COMMUNICATIONS	7
VIDEO INFORMATION	9
LIGHTING INFORMATION	11

## ADDRESS & CONTACTS

**Dr. Phillips Center for the Performing Arts**  
**155 East Anderson Street, Orlando, Florida 32801**

- Administrative Phone 407.839.0119
- Fax Number 407.839.0116
- Box Office 407.358.6603
- Security/Stage Door 407.992.1777

## PRODUCTION

A production manager is generally assigned to each visiting production seven (7) weeks out from arrival. S/he will reach out for advancing all needs. Prior to that, inquiries may be sent to [productionmanagement@drphillipscenter.org](mailto:productionmanagement@drphillipscenter.org), which will reach the entire production management staff.

### Production Labor

The DeVos Family Room at the Dr. Phillips Center for the Performing Arts is staffed by in-house technicians. Third-party Staffing is determined by the production's needs in coordination between the assigned dpc Production Manager and visiting production.

## OTHER CONTACTS

Guest Services Team [fohadvance@drphillipscenter.org](mailto:fohadvance@drphillipscenter.org)  
Security Team [security@drphillipscenter.org](mailto:security@drphillipscenter.org)



DeVos  
Family  
Room



## MAP AND DIRECTIONS

The Dr. Phillips Center is conveniently located in Downtown Orlando and can be reached by several routes.

- Main Building Guest entrance: 445 South Magnolia Avenue
- Administrative offices: 155 East Anderston Street
- Loading dock and cast & crew arrivals: 470 South Rosalind Avenue

### VIA WEST ON I-4

- Exit to South Street (Exit 82B)
- Exit curves right
- Right onto South Street
- Right onto Orange Avenue
- Left onto Anderson Street
- Left onto Rosalind Avenue – loading dock is on the left

### VIA EAST ON I-4

- Exit to Anderson Street (Exit 82C)
- Left on Anderson Street
- Left onto South Rosalind Avenue – loading dock is on the left

### VIA WEST ON 408

- Exit to Orange Avenue/SR-527 (exit 10A)
- At the bottom of the ramp, turn right onto South Lucerne Circle East
- Right onto South Orange Avenue (northbound) – get in the second lane from left
- Loading dock will be on your left after passing under the 408 and past the first light (Anderson St.)

### VIA EAST ON 408

- Exit to Rosalind Avenue exit (Exit 11A) – stay in the left lane
- Left onto South Street – drive around the building counter-clockwise
- Left onto Magnolia Avenue – pass under the DPC canopy
- Left onto Anderson Street
- Left onto Rosalind Avenue – the loading dock is on your left

## DELIVERIES and VEHICLE PARKING

The DeVos Family Room does not have a dedicated delivery dock. Deliveries must be scheduled and coordinated with other activities in the building. Please discuss with a dpc Production Manager during the Advance, prior to arrival.

There is no on-site parking; however, parking garages are located nearby for cars. All parking arrangements should be discussed with a dpc Production Manager prior to arrival for necessary bay assignment.

## ROOM SPECIFICATIONS

The DeVos Family Room Floor is located on the third floor of the Dr Phillips Center with access only via the shared lobby of the building. While loading dock access can be coordinated, passenger elevators and crossing through the Center's lobby, either on the ground or third floors, is required to access the room.

The DeVos Family Room floor is surfaced with carpet tiles.

Any damage to floor incurred by a production must be restored by the production.

Fog, Haze, and Open Flame are not permitted in the room without permitting and fire watch personnel (fees apply). Requests must be made 21 days prior to the first usage.

## RIGGING SPECIFICATIONS

The DeVos Family Room has a fixed ceiling grid, which has a slight curve to it. Any intended rigging must be discussed during the Advance process.

## Window Wall Curtains

Multiple curtain sections are hung on two tracks, which meet at the center of the west window. The south half of the curtains may be stored in the southeast corner and the north half in the northeast corner, leaving all of the room's windows clear. All of the curtains may be closed to mostly blackout the space.

## SOUND AND COMMUNICATIONS

The DeVos Family Room has a D&B Point Source system made up of twelve (12) 8S cabinets, firing downward from the grid. Two (2) 18S Subwoofers are hung in the grid. There are two (2) AL-90 point source speakers available as L-R Mains when required. Signal is routed from console to amps via DANTE, running through a DS10 Processing & Matrix unit.

The Front-of-House console is an Allen & Heath Avantis. The Avantis has one (1) 128x128 Dante Networking Card. There is also a AR168 I/O box for local inputs for the stage. The Wireless System listed below is connected to the console via DANTE.

The venue has four (4) D&B M6 monitor wedges available for use, each with a discrete mix available for it.

### Mix Position

The console is on a rolling table with accompanying processing equipment. There are patch connections on all four (4) walls for flexibility, but the console is normally set up on the north window wall.

## Audio Equipment List

### Wireless Microphone System

1	Shure UA845UWB Antenna distribution system
3	Shure AD4Q Axient Digital 4 Channel Microphone Receiver
1	Shure AD600 Axient Digital Spectrum Manager
1	Shure AD610 Showlink Access Point
8	Shure ADX1:G57 Wireless Belt Pack Transmitter
8	Shure MX184 Supercardioid Lavalier Microphone
8	Shure ADX2/K9:G57 Wireless Handheld Transmitter, KSM9 Capsule
2	Shure SBRC Rackmount Battery Charger Chassis
4	Shure SBM910 Battery Charger Module: SB910 Battery
4	Shure SBM920 Battery Charger Module: SB920 Battery
16	Shure SB910 Belt Pack Rechargeable Battery
16	Shure SB920 Handheld Rechargeable Battery
4	Shure PA805SWB Passive Antenna (470-952MHZ)

## VIDEO INFORMATION

The DeVos Family Room has a Whirlwind PressMite Active Press box, for easy routing for multiple cameras.

There is no screen permanently mounted in the venue. Standard hanging positions are along the center of the south wall and the center of the east “white wall”, typically a 9' x 16' front projection screen. Mounting positions exist for both shots

## LIGHTING INFORMATION

The DeVos Family Room has a full LED House lighting plot. This rig that can typically light any type show performing in the space. The room contains the fixtures below and does not have any loose inventory. Any additions will require a rental, and any adjustments may require a lighting call.

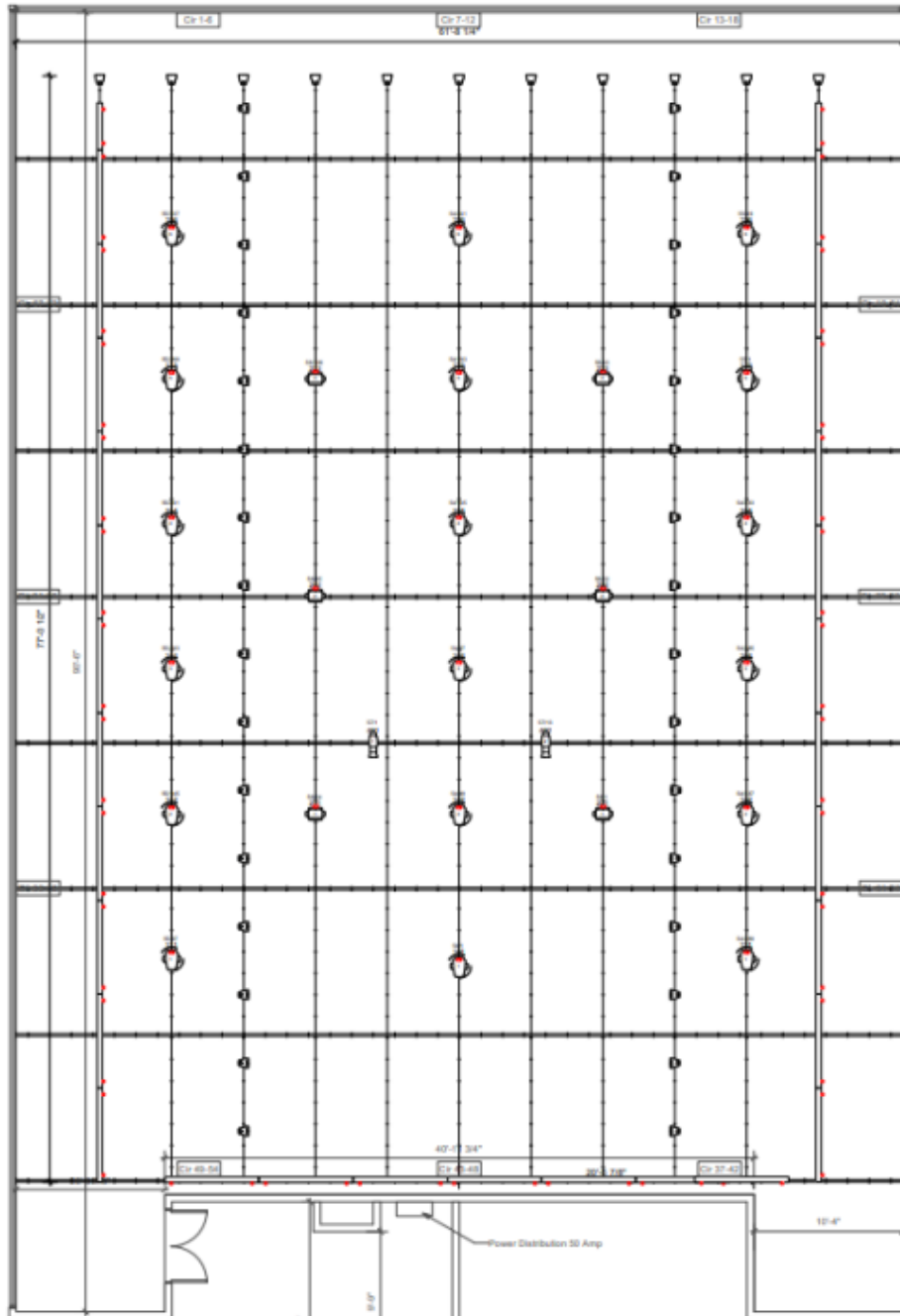
## LIGHTING EQUIPMENT

### Control

1	Full Board with HPU processor.
---	--------------------------------

### Lighting Fixtures

30	ETC ColorSource Par Deep Blue
18	HES Lonestar
6	HES SolaPix 19
2	50 degree ETC Lustr 3 w/XDLT barrel (as Gobo projector)
2	36 degree XDLT barrel (as additional barrel size for Gobo projector)
	ETC ColorSource Deep Blue Linear Fixtures, completely line the window perimeter



Symbol Key

Light	
	ETC ColorSource Linear 2 @ 210w 25.1 lb. 2
	ETC ColorSource Linear 4 @ 440w 37.5 lb. 20
	ETC ColorSource PAR No Lens @ 90w 8.3 lb. 11
	ETC Source 4 S2 ADLT 350kg @ 307 w 19.3 lb. 2
Moving Light	
	ETC High End Lusteror @ 815 w 50 lb. 18
	High End SoloPia 19 @ 15w 25 lb. 8
Static Accessory	
	No 2D Preview C Clamp 1 lb. 43
Typical	
Color Summary	
Color	Count

3'-0"

2'-0"

17'-0 1/2"

18'-0"

Power Distribution 50 Amp

Service Area. Access to outlets and rack rear. Cable run path. DO NOT BLOCK.

HDD4 Console table. On Wheels. Needs clear access into of room.

1'-0" From existing if boxes on South

1'-0" From back wall 2'-0" near door to wall-mount rack removed and gear to rear rack.

Only Usable power is on this wall. Do not block.

**2 DeVos Overhead**  
Scale: 1:122

Date: 6/23/2022