

WALT DISNEY THEATER

TECHNICAL SPECIFICATIONS



Dr. Phillips Center for the Performing Arts

ORLANDO, FL 32801

www.drphillipscenter.org

TABLE OF CONTENTS

GENERAL CONTACT INFORMATION	4
MAP & DIRECTIONS	5
TRUCK, BUS & VEHICLE PARKING	6
LOADING DOCK INFO	7
SEATING INFORMATION AND CAPACITY	8
SEATING OVERVIEW AND CHARTS	9
STAGE SPECIFICATIONS	12
ORCHESTRA PIT / EQUIPMENT	13
CENTERLINE SECTION DRAWING	14
RIGGING SPECIFICATIONS / OBSTACLES	15
HANGING PLOT / LINE SCHEDULE	16
RIGGING ACCESS POINTS OVER HOUSE	19
SOUND AND COMMUNICATIONS	20
LIGHTING INFORMATION	24
LIGHTING EQUIPMENT	25
DRESSING ROOM / GREEN ROOM INFORMATION	28
BACKSTAGE MAPS	30

ADDRESS & CONTACTS

Dr. Phillips Center for the Performing Arts

155 East Anderson Street, Orlando, Florida 32801

- Administrative Phone 407.839.0119
- Fax Number 407.839.0116
- Box Office 407.358.6603
- Security/Stage Door 407.992.1777

PRODUCTION

A production manager is generally assigned to each visiting production seven (7) weeks out from arrival; they will reach out for advancing all needs. Prior to that, inquiries may be sent to productionmanagement@drphillipscenter.org, which will reach the entire production management staff and the appropriate person will respond.

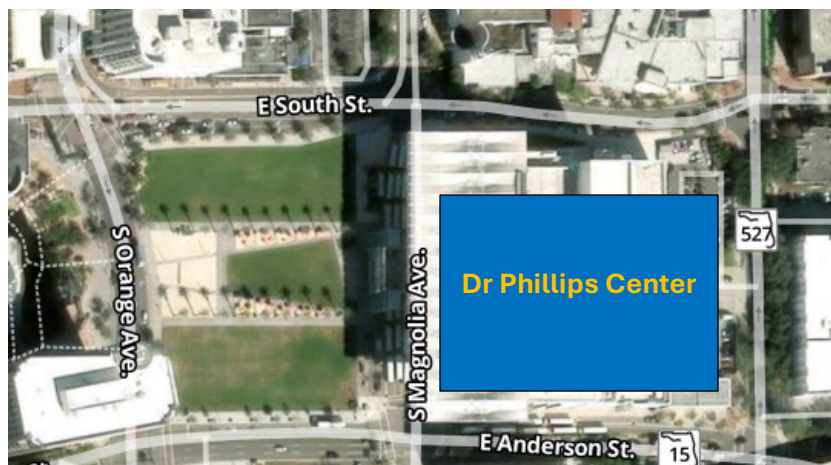
Production Labor – I.A.T.S.E.

Steinmetz Hall at the Dr. Phillips Center for the Performing Arts employs members of I.A.T.S.E. on a Collective Bargaining Agreement for all disciplines except video, which is staffed in-house. Hair and Make-Up falls under Local 798 with all other disciplines under 631.

- Head Carpenter wdt.carp@drphillipscenter.org
- Head Audio wdt.audio@drphillipscenter.org
- Head Electrician wdt.lighting@drphillipscenter.org
- Head Flyman wdt.flyman@drphillipscenter.org
- Head Props wdt.props@drphillipscenter.org
- Head Wardrobe wdt.wardrobe@drphillipscenter.org

OTHER CONTACTS

Guest Services Team guestservices@drphillipscenter.org
Security Team security@drphillipscenter.org
Craft Services (Catering) foodbeveragemanagement@dpc.org



MAP AND DIRECTIONS

The Dr. Phillips Center is conveniently located in Downtown Orlando and can be reached by several routes.

- Guest entrance: 445 South Magnolia Avenue
- Administrative offices: 155 East Anderson Street
- Loading dock and cast & crew arrivals: 470 South Rosalind Avenue

TRUCKS & BUSES GOING TO LOADING DOCK

VIA WEST ON I-4

- Exit to South Street (Exit 82B)
- Exit curves right
- Right onto South Street
- Right onto Orange Avenue
- Left onto Anderson Street
- Left onto Rosalind Avenue – loading dock is on the left

VIA EAST ON I-4

- Exit to Anderson Street (Exit 82C)
- Left on Anderson Street
- Left onto South Rosalind Avenue – loading dock is on the left

VIA WEST ON 408

- Exit to Orange Avenue/SR-527 (exit 10A)
- At the bottom of the ramp, turn right onto South Lucerne Circle East
- Right onto South Orange Avenue (northbound) – get in the second lane from left
- Loading dock will be on your left after passing under the 408 and past the first light (Anderson St.)

VIA EAST ON 408

- Exit to Rosalind Avenue exit (Exit 11A) – stay in the left lane
- Left onto South Street – drive around the building counterclockwise
- Left onto Magnolia Avenue – pass under the DPC canopy
- Left onto Anderson Street
- Left onto Rosalind Avenue – the loading dock is on your left



GENERAL PARKING INSTRUCTIONS (NO ON-SITE PARKING)

There are numerous downtown parking garages, but the Orange County Administration Garage is the most convenient, especially to Back-of-House. It is located diagonally northeast from the Center bordered by South Street, Rosalind Avenue, Jackson Street and Liberty Avenue. Its entrance is on the East side of the garage off Liberty Street.

VIA 408 EAST

- Exit to Rosalind Avenue exit (Exit 11A) – be in the RIGHT Lane
- Left onto Rosalind Avenue, then first right onto Liberty Street, garage is on your left

VIA ALL OTHER DIRECTIONS

- Following directions to Loading Dock, but continue North on Rosalind Avenue, in right lane
- Right on Jackson Street
- Right on Liberty Street

TRUCK, BUS & VEHICLE PARKING

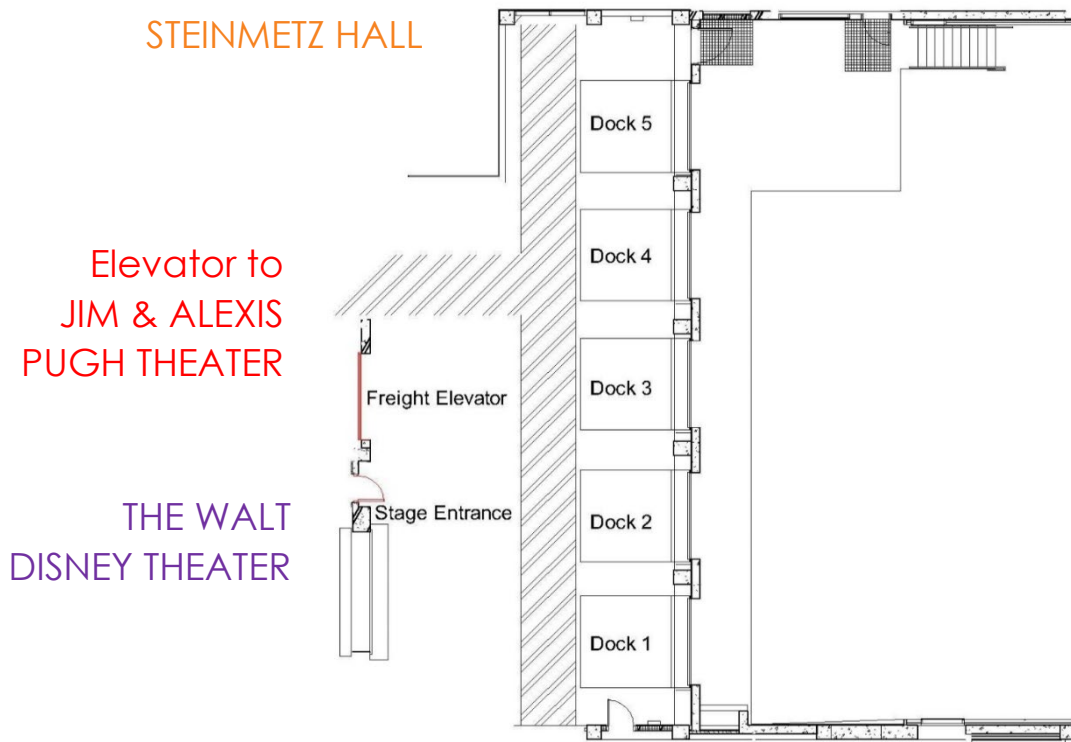
Truck and Bus parking on site is limited. Please discuss with a DPC Production Manager during the Advance, prior to arrival. The Walt Disney Theater is typically allotted two (2) loading docks for load-in and load-out, but other activities in the building may limit this.

Parking garages are located nearby for cars.

All parking arrangements must be discussed with a DPC Production Manager prior to the event for necessary bay assignment as well as parking passes.

LOADING DOCKS

There are five (5) loading docks located in the rear of the building off South Rosalind Avenue, shared by the entire building. The Loading Docks are 4' high with deck levelers. The doors into the cross-dock receiving area are 8'w x 12'h. A 50a shore power connection is available at Bay 1 and Bay 5.



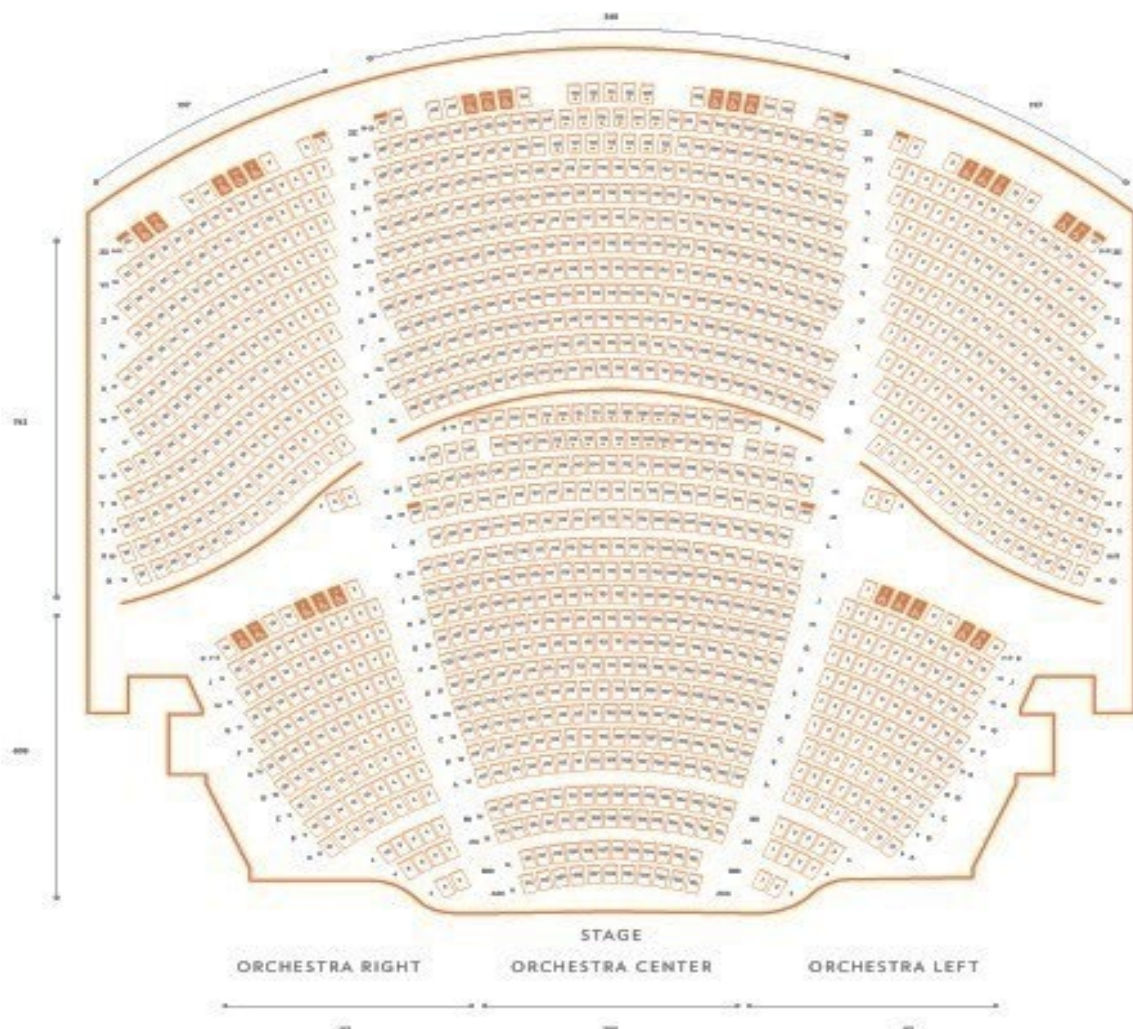
SEATING INFORMATION AND CAPACITY

MAXIMUM Seating Capacity is 2,711 Seats (See seating maps on following pages)

Orchestra Level – 1328 Seats Total		
Orchestra Level Pit 1	Rows AAA – BBB	27 Seats
Orchestra Level Pit 2	Rows AA – BB	49 Seats
Orchestra	Rows A – O	509 Seats
Orchestra Terrace	Rows Q – ZZ	743 Seats
Total Complete Orchestra	AA- ZZ	1328 Seats
Half Pit Configuration	Removable Rows AAA – BBB	27 Seats
Full Pit/ Full Thrust Configuration	Removable Rows AAA - BB	76 Seats
Mezzanine Level – 580 Seats Total		
Mezzanine Level	Row A – J	560 Seats
Mezzanine Box Seats	Boxes A, B, C	20 Seats
Balcony Level – 803 Seats Total		
Balcony Level	Rows A - M	775 Seats
Balcony Box Seats	Seats Box A, B, C, D	28 Seats

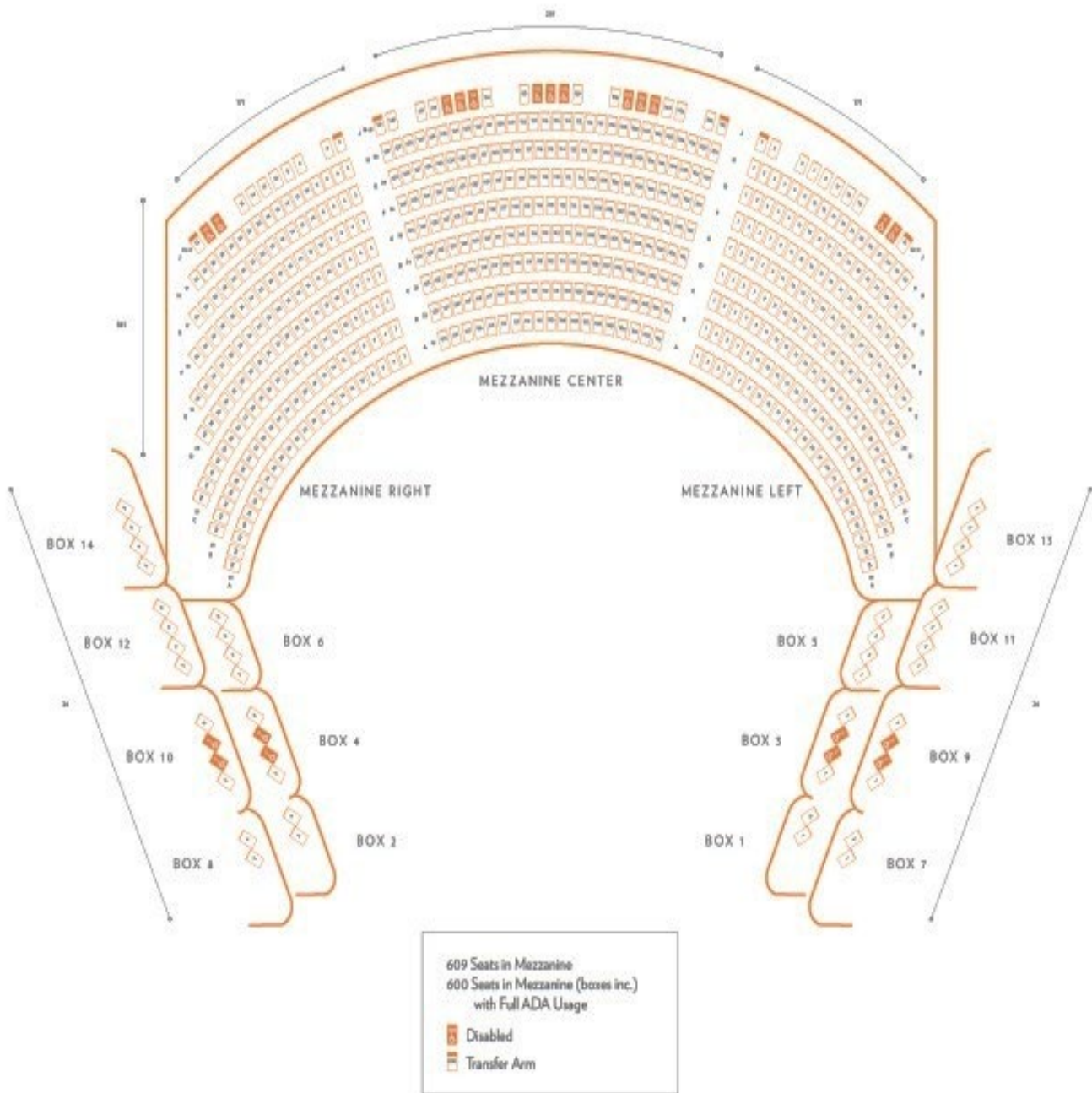


SEATING CHART – ORCHESTRA & TERRACE

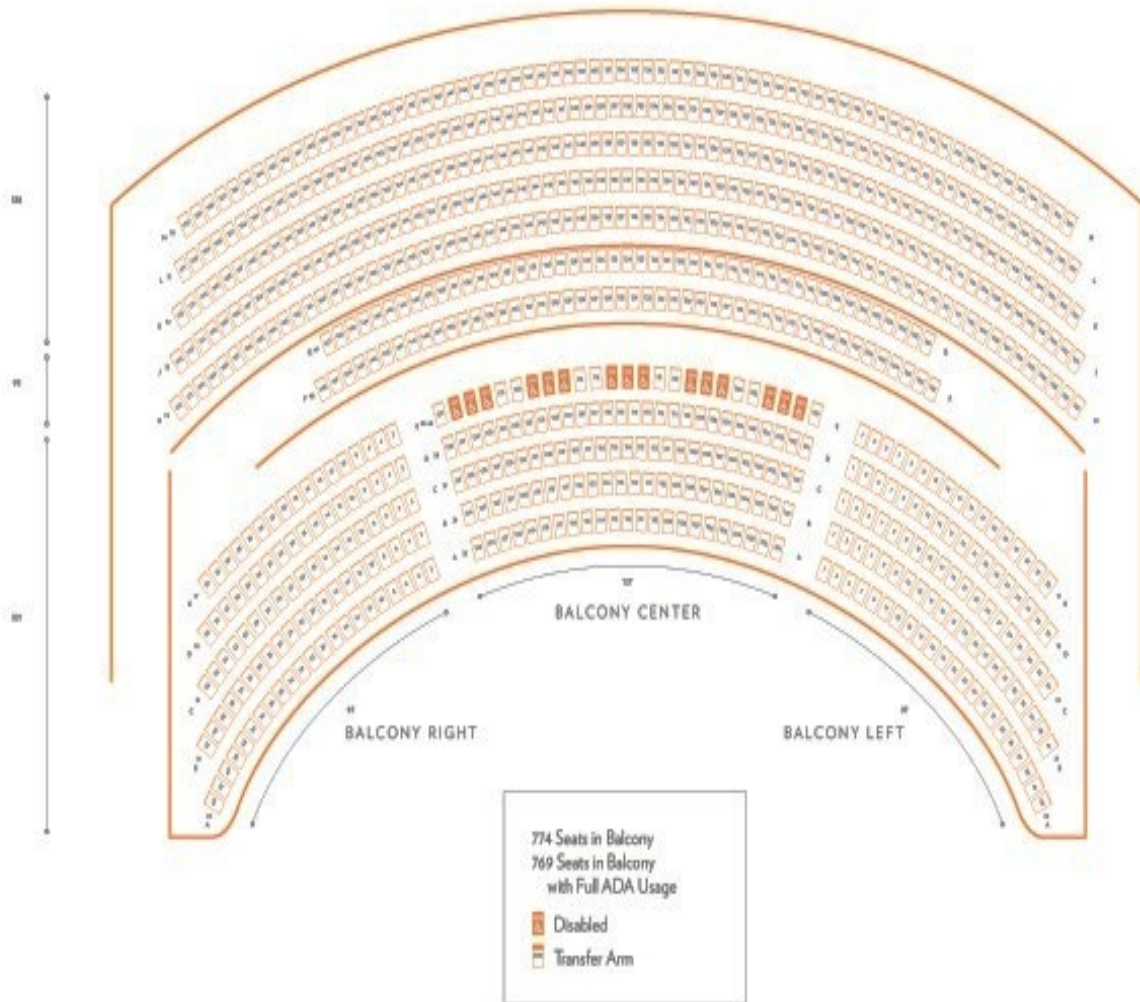


1348 Seats in Orchestra
1338 Seats in Orchestra with Full ADA Usage
 Disabled
 Transfer Arm
 Removable for Broadway Mitzor
Full Theater Capacity:
2731 Seats
2708 Seats with Full ADA Usage

SEATING CHART - MEZZANINE



SEATING CHART - BALCONY



STAGE SPECIFICATIONS

HEIGHT OF GRID UNDERSIDE	81'
HEIGHT OF PROSCENIUM OPENING	32'
WIDTH OF PROSCENIUM OPENING	50'
HEIGHT OF GALLERIES	
Upper Loading Gallery	71' 7"
Pin Rail SR	41' (Catwalk is 36')
Operating Gallery/ Pin Rail SL	41' (Catwalk is 36')
Clearance to Underside of catwalks	36' 6"
Upstage catwalk	None
DEPTH OF STAGE (from Plaster Line)	50'
WIDTH OF STAGE	125'
Width of stage (center to SR)	59' 6"
Width of stage (center to SL)	65' 6"
CENTER STAGE TO UPPER PIN RAIL SR	46' 6"
CENTER STAGE TO UPPER PIN RAIL SL	52' 6"
SIDE MASKING TABS UP TO DOWN	48' off CL

The stage floor is a semi sprung floor with double-layer tongue and groove plywood on aluminum sleeper over rubber blocks and finished with black Masonite. The rubber blocks are surrounded by a steel channel which limits over-decompression. Both thrust configurations are curved; measurements shown are along the centerline. **Any damage to the floor incurred by a production must be restored.**

ORCHESTRA PIT / STAGE THRUST

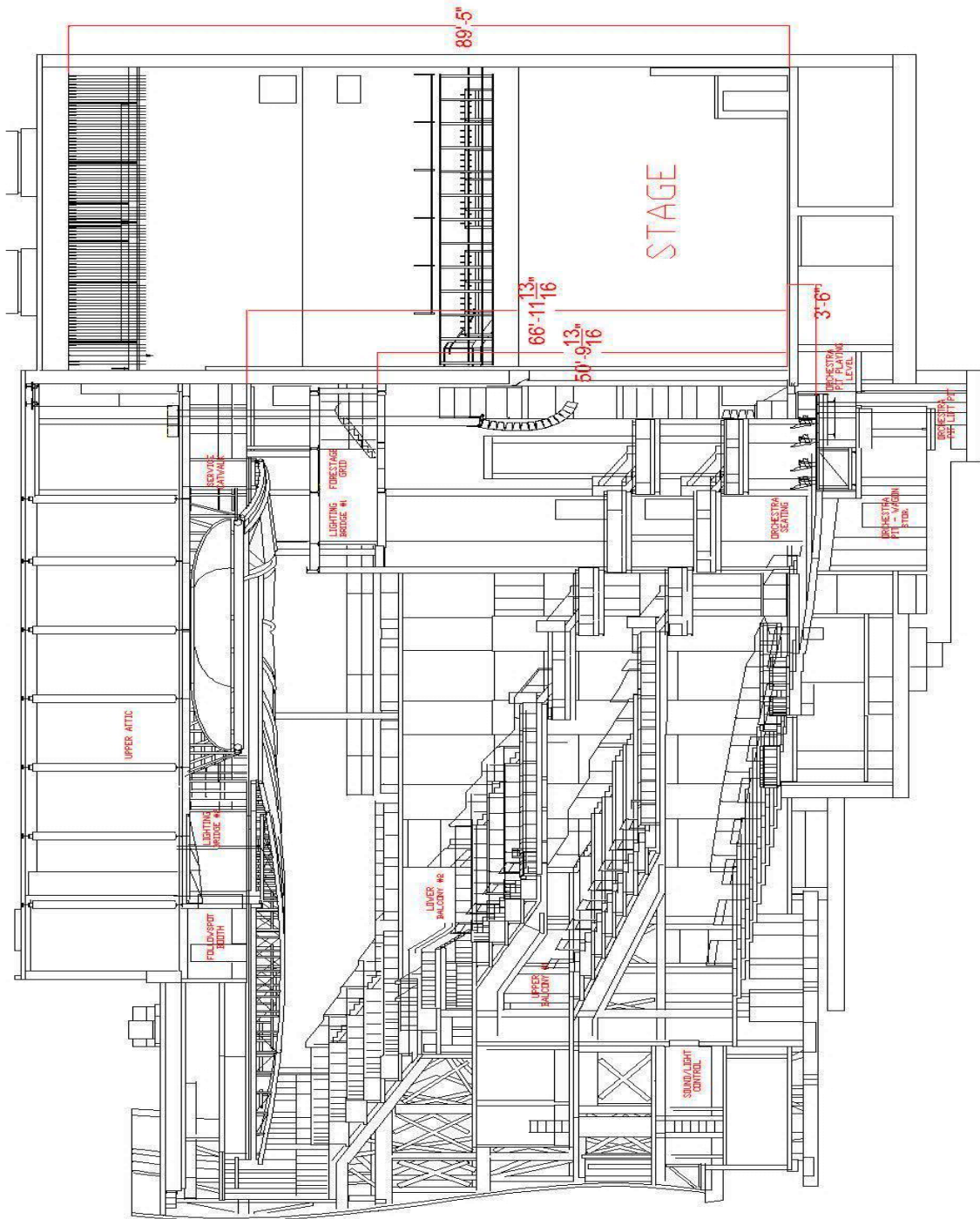
The first two (2) rows of the Orchestra seating (AAA-BBB) are on a single SERAPID lift, which allow the seats to be removed and stored to create either an extended stage apron or a small pit.

The third and fourth rows (AA-BB) may also be removed to make a large pit.

The stage overhang of the pit upstage of the SERAPID lift is 5'.

HEIGHT OF STAGE , seating level to stage level	3' 8"
PERMANENT APRON , from plaster line	4' 1"
from House curtain	6' 4"
EXTENEDED APRON , from plaster line	19' 10"
from House curtain	22' 4"
SMALL PIT , stage edge to downstage pit wall	9' d
Overall Dimensions including stage overhang	14' 6" x 43'
Approximate Capacity of Musicians	30 Musicians
LARGE PIT , stage edge to downstage pit wall	16' d
Overall Dimensions, including stage overhang	21' 6" x 53' 6"
Approximate Capacity of Musicians	55 Musicians
DEPTH OF PIT (pit floor to stage level)	8' 6"

THE WALT DISNEY THEATER CENTER LINE SECTION



RIGGING SPECIFICATIONS

The House fire curtain is steel-framed and motorized with counterweight.

The Walt Disney Theater has is a single-purchase, under-hung fly system with ninety (90) hand-operated line sets on 6" centers.

There are two (2) operating positions. One position is located at stage left on Stage Left. The second position is located 36' above stage level, also on Stage Left.

The Grid is walkable on Gridiron Channel Deck; wells are located at 0'0', 10', 20', and 30' left and right of center.

Grid Height	81'
Pipe Travel	75' (from 4' pipe position)
Max Live Load Weight	2,000 lbs.
Total Weight Available	85,500 lbs.
Length of Battens	66' (extensions available)

OBSTACLES

- Line set #3 is the motorized house curtain and operates at 360 feet per minute, minimum 10 feet per minute. The curtain is in two (2) halves with a three-foot (3') overlap. It is located 2'6" upstage of the plaster line.
- The House Curtain is permanent and cannot be removed or transferred.
- There are 1' gaps as noted in the line schedule below.

SOFT GOODS INVENTORY

	Unit	Height	Width
House Curtain	1	36'	65'
Borders	6	15'	66'
Legs (Sets L&R)	6	34'	14'
Split Black Drape (100% Fullness)	2	34'	35'
Scrim (Black Sharkstooth)	1	34'	66'
White Seamless Cyc (White Leno Filled)	1	38'	66'
Flat Panels	1	30'	50'
Side Tabs	12	34'	5'
Side Tabs	6	34'	9'

LINE SCHEDULE

Below is a list of standard hangs, which are subject to change. Please verify needs during the advance.

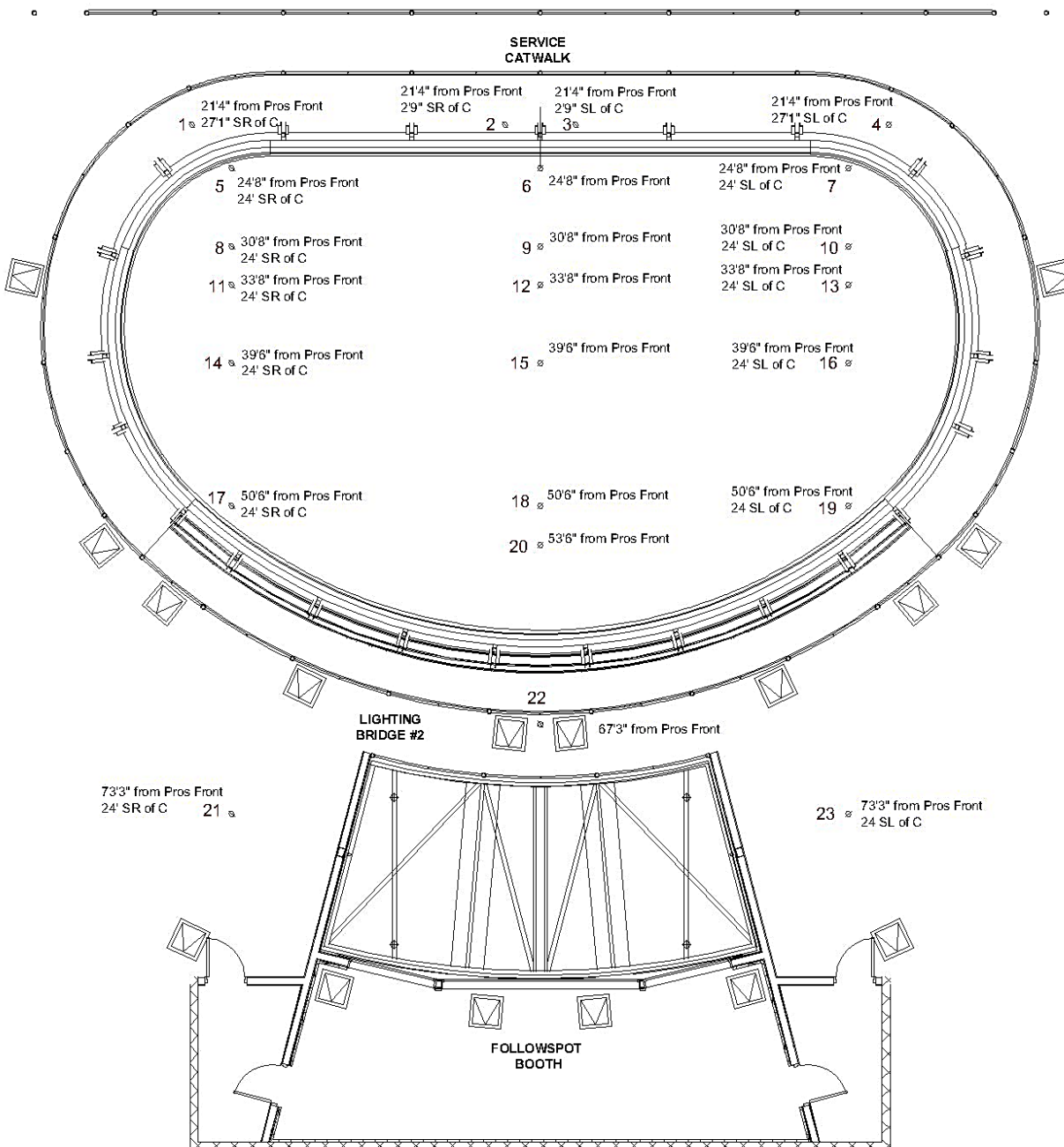
All the dimensions are taken from the plaster line.

LINE #	POSITION	HOUSE HANG	NOTES	WEIGHT
1	1' 1"	Masking (Border)		
2	1' 7"	Masking (Legs)		
3	2' 6"	Main Curtain (Royal Blue)	Permanent/Automated/Guillotine only	
4	3' 4"		Can foul with the Main	
5	3' 10"			
6	4' 4"			
Spreader Gap				
7	5' 4"			
8	5' 10"			
9	6' 4"			
10	6' 10"			
11	7' 4"			
12	7' 10"			
13	8' 4"	Border #1		
14	8' 10"	SL Leg #1		
15	9' 4"	SR Leg #1		
16	9' 10"			
17	10' 4"			
18	10' 10"			
19	11' 4"			
20	11' 10"			
21	12' 4"			
22	12' 10"			
23	13' 4"			
24	13' 10"			
25	14' 4"			
Spreader Gap				

LINE # POSITION HOUSE HANG NOTES WEIGHT

64	35' 4"			
65	35' 10"	Border #5		
66	36' 4"	Legs #5		
67	36' 10"			
68	37' 4"			
69	37' 10"			
70	38' 4"			
71	38' 10"			
72	39' 4"			
73	39' 10"			
74	40' 4"			
75	40' 10"			
76	41' 4"			
77	41' 10"			
78	42' 4"			
79	42' 10"			
80	43' 4"			
81	43' 10"			
82	44' 4"			
Spreader Gap				
83	45' 4"			
84	45' 10"	Border #6		
85	46' 4"	Legs #6		
86	46' 10"			
87	47' 4"			
88	47' 10"			
89	48' 4"			
90	48' 10"	Full Stage Blackout w/Fullness		
91	49' 4"	Cue Light Cable Cross- Over	House Power for Cue Lights	

RIGGING ACCESS POINTS OVER THE HOUSE



SOUND AND COMMUNICATIONS

SPEAKERS

Main Arrays: The Walt Disney Theater has a D&B Q – Series line array system - three (3) flown arrays Left/ Right/ Center. The Center array has thirteen (13) Q1 speakers and one Q7 speaker, flown center of the proscenium opening and the sideline arrays have ten (10) Q1 speakers each flown left and right in front of the proscenium, twenty-eight feet (28') from the center line.

Front Fills: The front fills service the first few rows of seating in the lower orchestra and are housed in a continuous cavity along the front of the stage.

Delays: D&B E6 speakers provide fill for seating located under the Mezzanine and Balcony overhangs.

Sub Configuration: Sub-woofers consist of D&B Audiotechnik B2 speakers are grounded stacked (two per side).

Patching: All systems are available for individual discrete patching at mix positions as well as DSL and DSR patch points.

Audio Power: Audio Power for the Walt Disney Theater is provided through a K-13 transformer delivering clean isolated power to all audio and video locations throughout the theater. The following locations are available company tie ins.

- (1) 200 amp 3 phase company switch at DSL
- (4) 20 amp receptables available DSR, DSL, USL, and USR

SOUND MIX POSITIONS

There are two (2) mixing positions available.

- **BACK OF TERRACE LEVEL**

Approximately 98' from the edge of the stage and in-line with the last row of seating is a 10'd and 12'w space for audio position. The cable run is approximately 250'. This position is located under about 20' of the Mezzanine level.

- **SOUND BOOTH**

Approximately 111' from the edge of the stage, behind the last row of Terrace seating, and the Orchestra-level position, is the sound booth. It has a window that can open. The room is approximately 19'd x 27'w. The Cable Run is approximately 250'.

FRONT OF HOUSE CONSOLE

X-SD10-W-WS-OP	DiGiCo SD 10 Control Surface – MAD1 & Multi-Mode Optics ST. Connections: MAD1 x 2, Optics x 1, Internal Waves Card Connectors: BNC, HMA Optical
X-WAVES-SD10	DiGiCo SD 12-96 SD -Waves Card (Internal SD Waves Card. Factory Fit)
X-WAVES-HORIZON	Waves Horizon Bundle License
MGB-P	DiGiCo DiGi-Grid MGB 112/128 Ch @48kHz
SD Rack	2 DiGiCo SD Racks - MAD1 & Multi-Mode Optics ST. Connections: MAD1 x 2, Optics x 1 Connectors: BNC, HMA Optical Both have 56 inputs, 1 has 16 Analog outputs, the other has 8 Analog Outputs

STAGE MONITORS / SIDE FILLS / AMPLIFIERS

One 56-Channel Analog Split with 3 available 56-Channel Fan Outs			
8	Meyer UM100	Monitors	15" Self-Powered Monitor Wedge
2	Meyer UPQ	Side Fills	Self-Powered, Two-Way loudspeaker

RECORDING / PLAYBACK / EFFECTS

1	Marantz	PMD570 Compact Flash Player
1	Tascam	CD01UPRO CD Player
1	Apple	Mac Mini with Q-Lab

MICROPHONES

3	ADK	S51 Large Diaphragm Condenser
2	AKG	C414 Large Diaphragm Condenser
2	AKG	535B Condenser Vocal Microphone
1	AKG	D112 Kick Drum Microphone
1	CAD	GXL2200 Large Diaphragm Condenser
2	Crown	PZM Boundary Mic
3	Crown	GLM100 Miniature Electret Condenser Microphone
4	DPA	4011A Cardioid Small Diaphragm Condenser
4	DPA	4006A Omnidirectional Small Diaphragm Condenser
2	DPA	4099 Instrument Mic with Piano Magnet Mount
1	Electrovoice	635A35
1	Electrovoice	EVC090
1	Electrovoice	US690 Console Mount Mic
2	Neewer	NW700 Large Diaphragm Condenser
6	Sennheiser	MD421
4	Sennheiser	E835 Vocal Microphones
7	Shure	Beta 58A
10	Shure	SM57
15	Shure	SM58
2	Shure	SM61
7	Shure	SM81
2	Sterling Audio	S50

WIRELESS MIC SYSTEM

4	Shure	AD4D Axient Digital 2 Channel Mic Receivers
8	Shure	AD1 = G57 WLX Mic Transmitter
8	Shure	AD2 / K8: G57 Handheld Transmitter, Beta 87 Capsule
8	Shure	WL 185 Lavalier Microphones for AD1 Transmitter

DIRECT BOXES / INTERFACE

6	BSS	AR-133 Active DI Box
2	Countryman	FET85 Passive DI Box
2	Radial	Pro D1 Passive DI Box
4	Radial	ProD2 Stereo Passive DI Box

BACKSTAGE COMMUNICATIONS

The Walt Disney Theater on has only four (4) party-lines for use.

1	Clear Com	PS-704 four channel power supply
1	Clear Com	RM-704 four channel remote rack station
20	Clear Com	RS-601 wired belt pack (single channel)
8	Clear Com	RS-602 wired belt pack (two channels)
8	Clear Com	KB-702 Speaker Station
20	Clear Com	CC – 95 Single – Muff Headset
8	Clear Com	CC –25 Single – Muff Lightweight Headset
8	Clear Com	HS-6 Handset
1	Clear Com	Tempest Wireless Base Station
3	Clear Com	4 Channel Wireless Belt Packs

RADIO CHANNEL FREQUENCIES

Channel 1	476.375 MHz
Channel 2	476.850 MHz
Channel 3	479.450 MHz
Channel 4	479.900 MHz
Channel 5	477.200 MHz
Channel 6	477.200 MHz
Channel 7	478.400 MHz
Channel 8	478.950 MHz

OTHER IN-HOUSE EQUIPMENT, SUBJECT TO AVAILABILITY

One 56-Channel Analog Split with 3 available 56-Channel Fan Outs
DiGiCo SD10T

LIGHTING INFORMATION CONTROL

1	ETC Eos T1 24k Console
690	ETC Sensor Dimmers

FRONT OF HOUSE TRANSFER PANEL

TBD	DMX in transfer available through board
-----	---

POWER DISTRIBUTION

4	400 Amp disconnect S/R Upper Rail
1	400 Amp disconnect S/R/US Wall Stage Level
2	200 Amp disconnects: (1) – DSR, (1) - USL
2	400 Amp Shore Power Panel (Loading Dock)
3	100 Amp disconnects (Hubble): Grid (USR/USL/DSL)
1	100 Amp disconnects (Hubble): Forestage Grid SL
16	20 amps circuits located on each corner of the stage
2	30 amp circuits available on mezzanine

FOLLOWSPOTS

3	Lycian 1295 3K follow spots located in spot booth 113' from stage at a 38 deg. angle
---	--

CONVENTIONAL

Equipment Inventory	Installed FOH and On Mobile Booms	Available for Lighting Plot
5 degree Source Four Ellipsoidal Spots	3	
10 degree Source Four Ellipsoidal Spots	44	12
14 degree Source Four Ellipsoidal Spots	33	
19 degree Source Four Ellipsoidal Spots	48	19
26 degree Source Four Ellipsoidal Spots	14	40
36 degree Source Four Ellipsoidal Spots	32	40
50 degree Source Four Ellipsoidal Spots	1	20
Rama Selecon 7"7 – 56 degree Fresnel 1000w		35
Arena Selecon 10"8 – 60 degree Fresnel 2000w		20
ETC Source Four PAR		60
PAR 64s (please ask about lamps available)		40

LED

HES SolaFrame Theater fixtures		4
Elation KL Cyc I		38

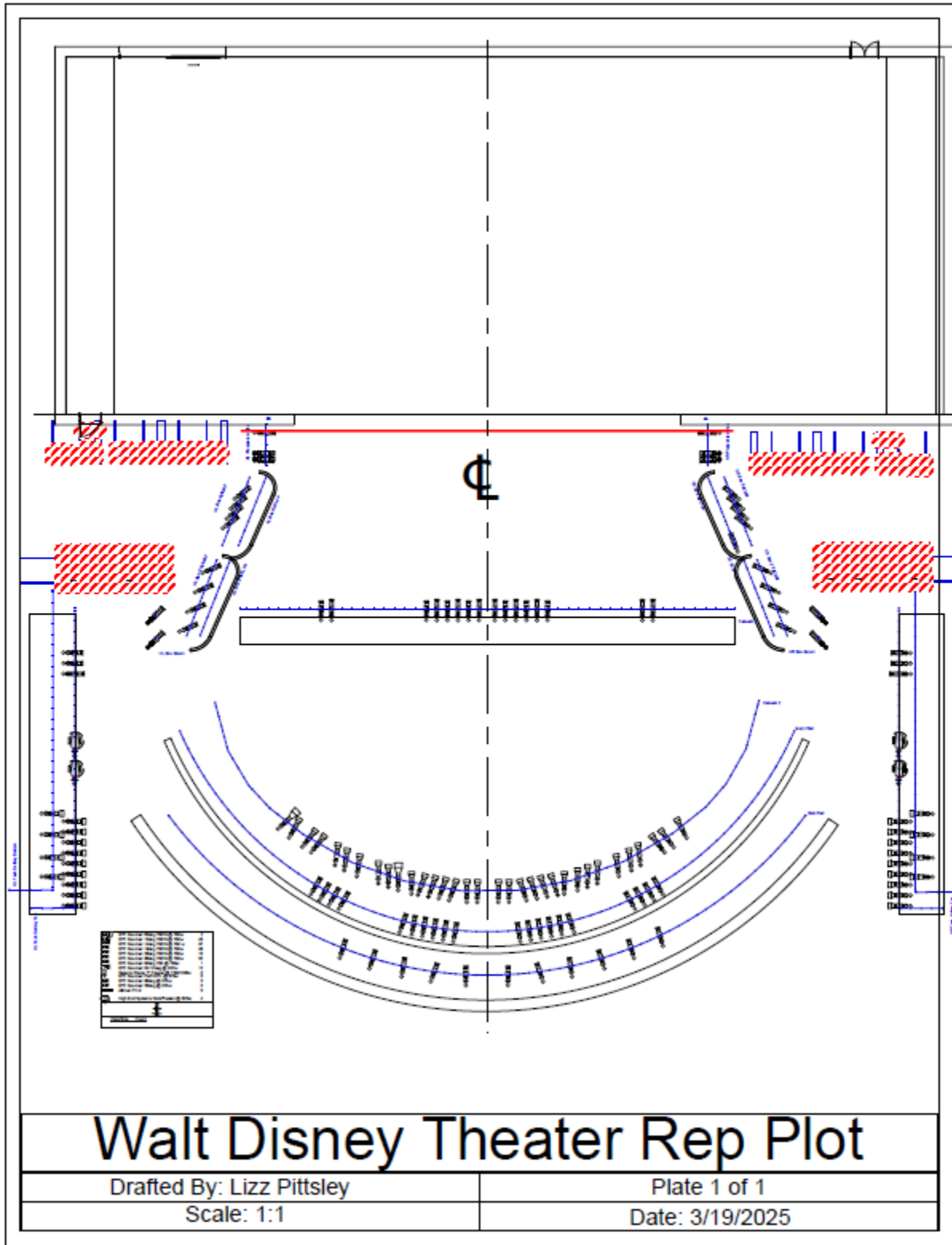
Cable, adaptors, side arms, etc. are available for the above instruments. Please note that the SolarFrame Theater fixtures above may be utilized in their current rep plot positions, but they are not able to be moved to other positions.

DANCE TOWERS

- The Walt Disney Theater has (6) rolling towers, primarily used for dance performances. [Their availability should be confirmed during a production's advance as they may be allocated elsewhere in the dr phillips center.]
- Each tower has seven (7) "rungs". The bottom one is about 24" above the ground. The next two levels up are 18" on center, followed by two at 16.5" on center. There is another mounting position 6" higher for an overhung fixture.
- The top five positions (1-5) are 36-degree ETC Source 4 fixtures.
- The bottom two positions (6-7) are 26-degree ETC Source 4 fixtures.

DIMENSIONAL INFORMATION

Plaster line to Mezzanine rail (Platform for projectors on Center-Line)	74' at 12° angle
Plaster line to Spot Booth	113' at 38° angle
Plaster line to Lighting Bridge 1	56' at 69° angle 20' from the stage plaster line Height: 50'
Plaster line to Lighting Bridge 2	96' at 45° angle 69' from stage plaster line Height: 69'
Curtain line to center of Alternate Sound Mixing Position	98'
Curtain line to Lightning Booth	112'



DRESSING ROOM / WARDROBE / GREEN ROOM INFORMATION

DRESSING ROOMS

Two, single Star/Soloist dressing rooms (A & B) are located in a hallway off of Stage Left at stage level. Dressing rooms C-H surround a common area behind the stage, also at stage level. Three (3) chorus rooms (B1-B3) are located in the basement with stair access to both stage left and stage right.

All rooms are equipped with showers, toilets, mirrors and chairs. Each dressing room is also equipped with the capability for a hard wired internet. See the dressing room maps on the following pages for locations

DRESSING ROOM

NUMBER OF PEOPLE

DIMENSIONS

Stage Level		
Room A – Star	1 person	10'W x 20'L
Room B – Star	1 person	10'W x 17' 6"L
Room C	3-4 persons	9'W x 9' 7"L
Room D	3-4 persons	7' 3"W x 10' 7"L
Room E	10-12 persons	14' 6"W x 22'L
Room F	10-12 persons	10'W x 11' 4"L
Room G	3-4 persons	10'W x 11' 4"L
Room H	3-4 persons	18'W x 19' 5"L
Basement Level		
Chorus Room B1	18-20 persons	23' 10" W x 28'L
Chorus Room B2	18-20 persons	11'W x 33'L
Chorus Room B3	10-12 persons	17'W x 23'L

WARDROBE AND LAUNDRY ROOM

A wardrobe and laundry room is located backstage at stage level. Three (3) washers, three (3) dryers and a double sink reside in this room. Use of the equipment requires an I.A.T.S.E. crew member.

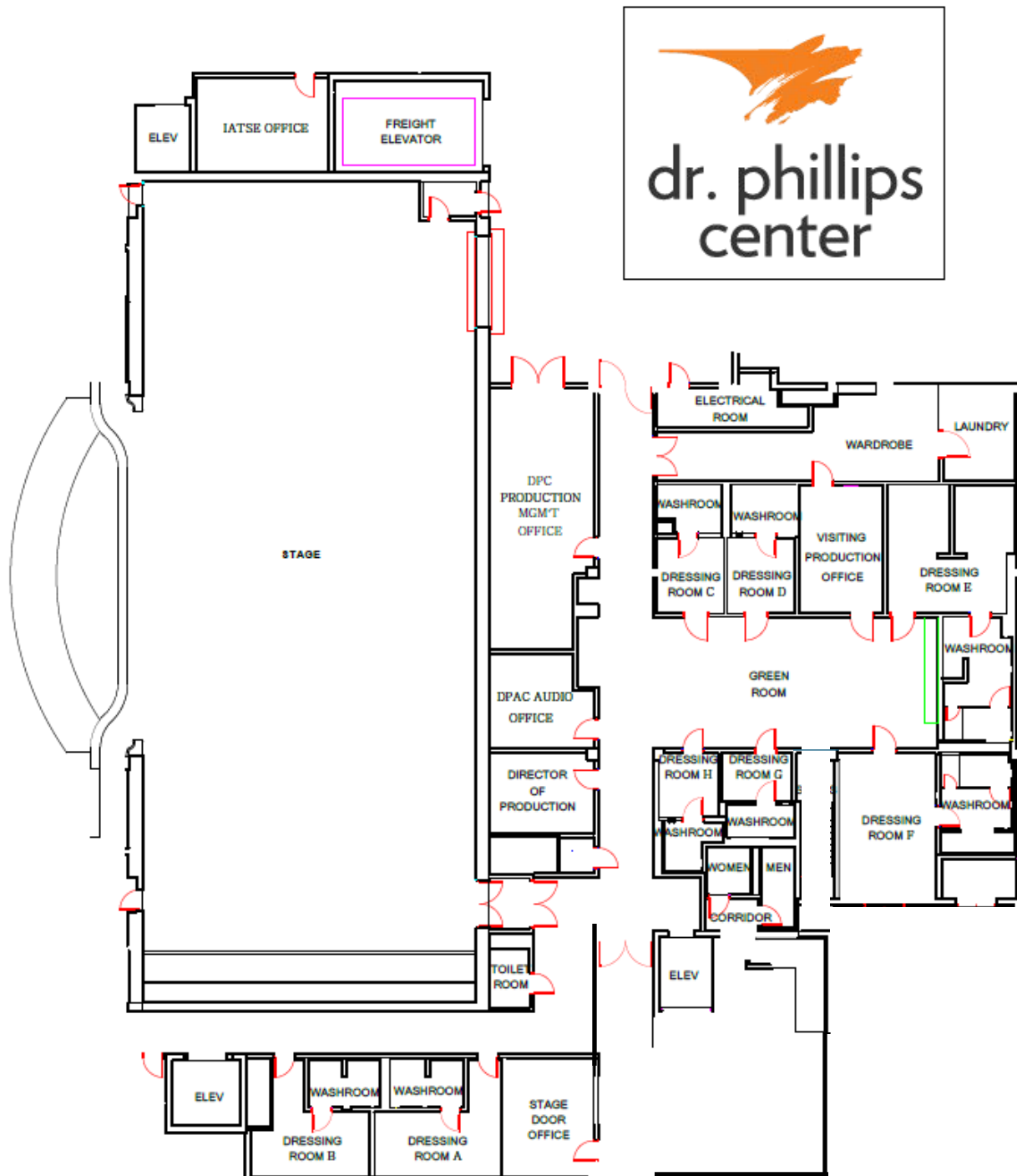
PERFORMER'S LOUNGE / GREEN ROOM / CATERING

The Walt Disney Theater Performer's Lounge is in an open area located on stage level and measures 20'W x 43'6"L. It contains a small kitchen area with a microwave, coffee maker, sink, and refrigerator. Dressing Rooms C-H and the production office open into this area.



Room B - Star

BACKSTAGE MAP – LEVEL 1 / STAGE LEVEL



BACKSTAGE MAP – BASEMENT LEVEL

