



*MSSII*  
*MSSII Deluxe*  
*MSSII AL Series*



*98", 108" & 132" Body Lengths*



[www.monroetruck.com](http://www.monroetruck.com)



mssii



Nitrogen Gas Strut Door Holders



Slam Action Tailgate

L.E.D. FMVSS Compliant Lighting Package



Poly Carbonate Fender Flares

MTE "Pooched" Bumper with Black Powder Coat Finish. Bumper Mounting Plates are Reinforced for Optional Add-On Receiver Hitch Mounting.



Stainless Steel Bolt-On Block Hinges

### MSSII Features and Benefits:

- A60 Galvannealed Steel Throughout, Including the Load Space Floor.
- 18 Gauge Steel Outer Skin with Double Paneled Construction & Internal Reinforcement - Thickest & Strongest Doors in the Industry
- Large, Automotive-Quality, Bubble-Type Seal & Mechanical Seal Provide Dual Line of Defense Against Weather
- Primed & Powder Coated Steel Understructure
- Nitrogen Gas Strut Door Holders
- Stainless Steel Rotary Paddle Latches - Attractive Appearance with No Exposed Fasteners & Rust Resistant
- Poly Carbonate Fender Flares & Seamless Wheelhouse Panel - Fewer Places for Dirt & Moisture to Collect
- Stainless Steel Bolt-On Hinges Feature a Fully Concealed Pin that is Protected from the Elements & Provides Smooth, Reliable Operation
- Knee Braced Slam Action Tailgate
- MTE Pooched Bumper with Black Powder Coat Finish
- L.E.D. Stop/Turn/Tail Lights
- Acrylic E-Coat Immersion Primer System & Powder Coat White Finish Provides a Durable High Gloss Finish
- 6-Year Limited Warranty



## MSSII Deluxe



The MSSII Deluxe package includes all the features & benefits of the standard MSSII Service Body, PLUS...

- Top Paks with Bright Aluminum Lids
- Bright Aluminum Trim on Tailgate

Also available with an Optional Forklift-Loadable Ladder Rack



Nationwide Ship-Thru Available



## MSSII - AL Series



### MSSII - AL Series Features and Benefits:

- All Aluminum - Understructure Extruded Box Tube Construction
- Swing Doors - Compression T-Handle, Stainless Piano Hinges
- Heavy Duty Slam Action Tailgate
- Interlocking Extruded Flooring
- Fully Welded Construction
- Powder Coat Finish: White, Red or Black
- Poly Carbonate Fender Flares

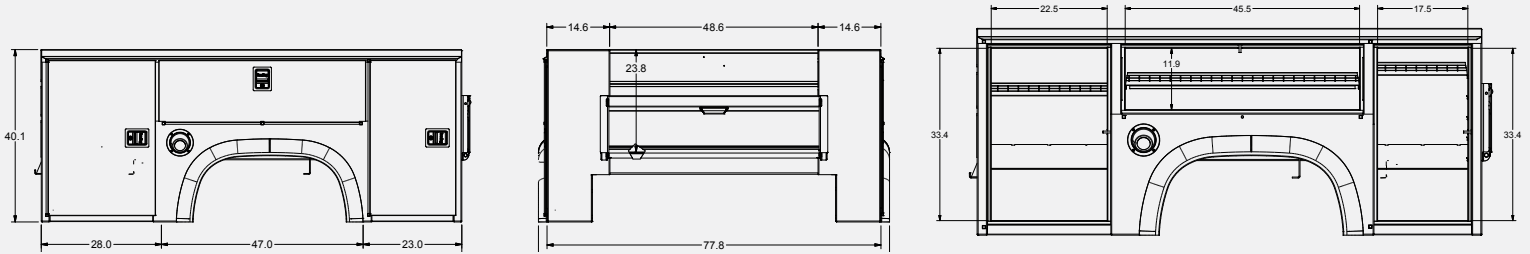
- Brite Tread Plate Splash Guards on Front
- Pass Through Panel (Mid to Rear Compartment)
- 8" Bumper, Powder Coated Non-Skid Black, with (2) 6" L.E.D. Backup Lights & (5) Penny Lights
- L.E.D. Marker Lights
- 10-Year Limited Warranty



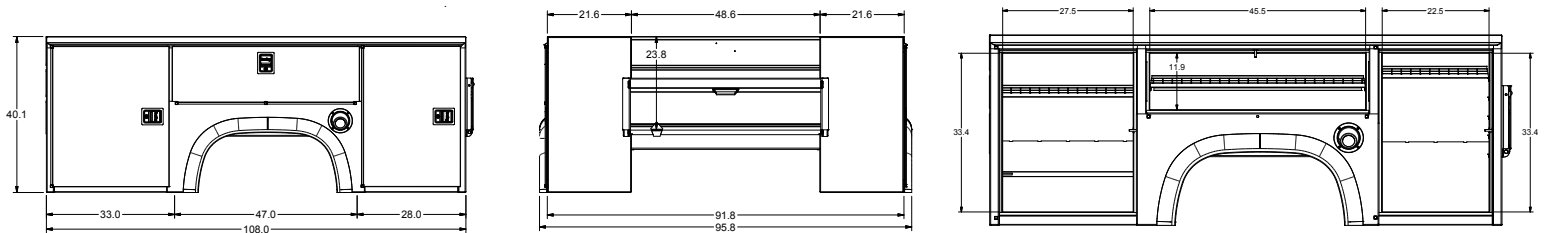
## MSSII Specifications

Model	Style	Axle	Overall Length	Overall Width	Floor Width	Body Height	No. of Side Compartments	Compartment Depth	Load Space Depth	Body Weight
MTE98	Standard	SRW	98"	77.8"	48.6"	40.1"	6	14.6"	23.8"	996 lbs.
MTE108	Standard	DRW	108"	91.8"	48.6"	40.1"	6	21.6"	23.8"	1,309 lbs.
MTE132	Standard	DRW	132"	91.8"	48.5"	40.1"	8	21.6"	23.8"	1,597 lbs.

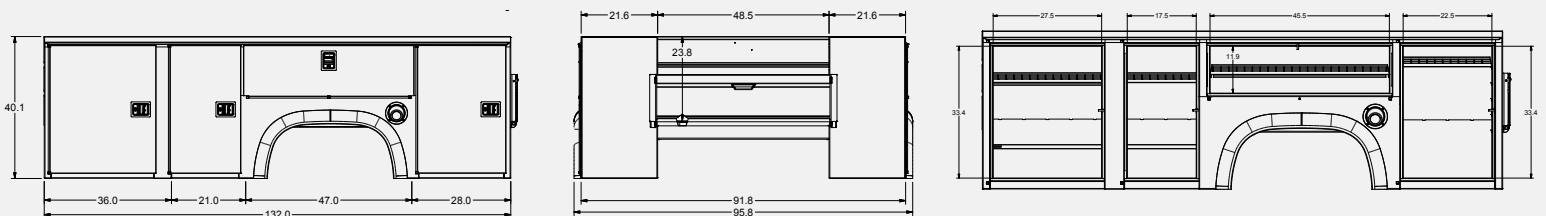
MTE98



MTE108



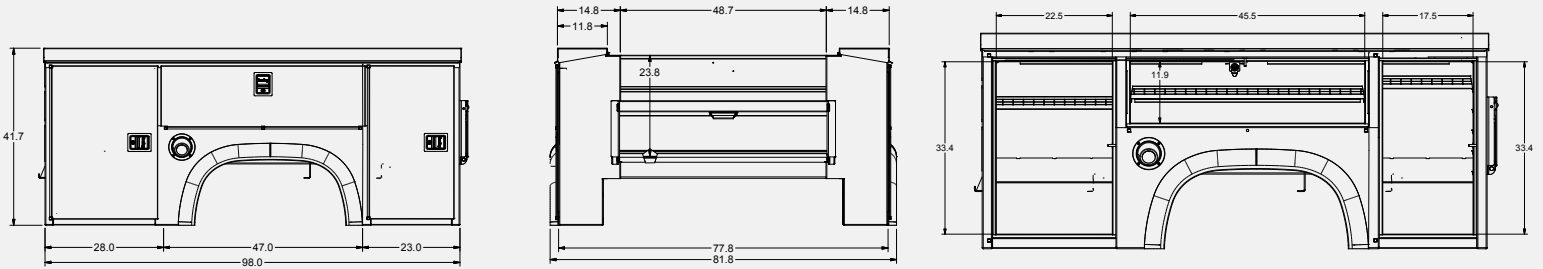
MTE132



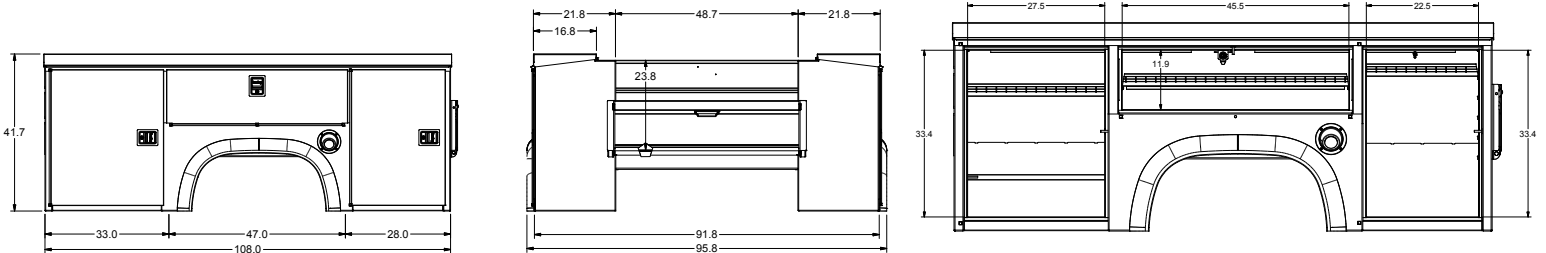
## MSSII Deluxe Specifications

Model	Style	Axle	Overall Length	Overall Width	Floor Width	Body Height	No. of Side Compartments	Compartment Depth	Load Space Depth	Body Weight
MTE98T	Steel Top Pack	SRW	98"	77.8"	48.7"	41.7"	6	14.8"	23.8"	1,075 lbs.
MTE108T	Steel Top Pack	DRW	108"	91.8"	48.7"	41.7"	6	21.8"	23.8"	1,517 lbs.
MTE132T	Steel Top Pack	DRW	132"	91.8"	48.7"	41.7"	8	21.8"	23.8"	1,855 lbs.
MTE98T	Alum Top Pack	SRW	98"	77.8"	48.7"	41.7"	6	14.8"	23.8"	988 lbs.
MTE108T	Alum Top Pack	DRW	108"	91.8"	48.7"	41.7"	6	21.8"	23.8"	1,395 lbs.
MTE132T	Alum Top Pack	DRW	132"	91.8"	48.7"	41.7"	8	21.8"	23.8"	1,705 lbs.

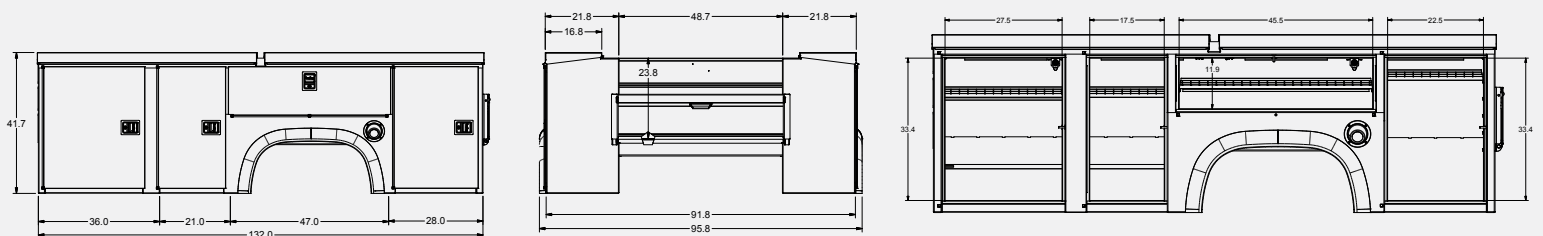
MTE98T



MTE108T



MTE132T

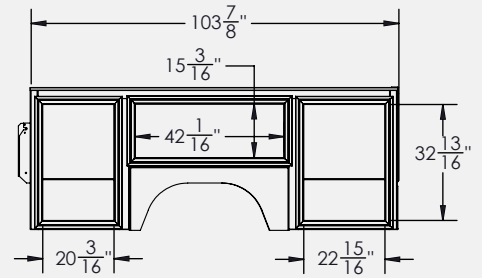
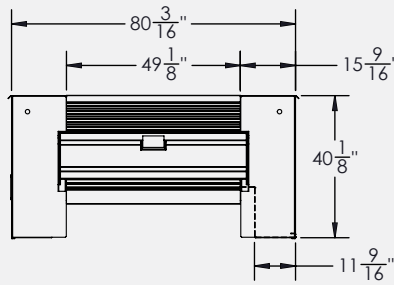
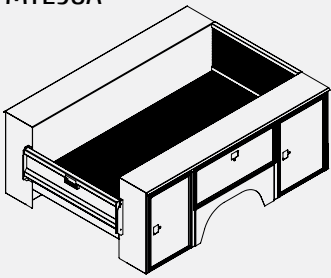




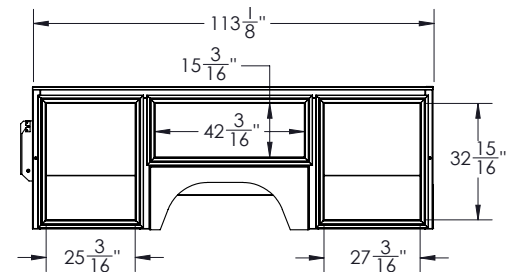
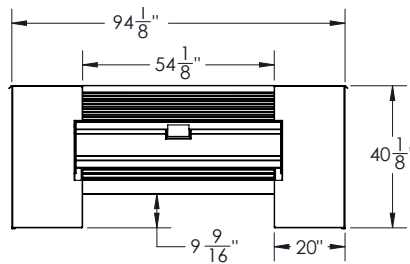
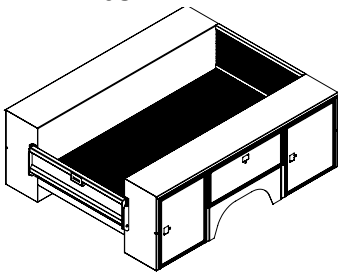
## *MSSII - AL Series Specifications*

Model	Style	Axle	Overall Length	Overall Width	Floor Width	Body Height	No. of Side Compartments	Compartment Depth	Load Space Depth	Body Weight
MTE98A	Aluminum	SRW	103.875"	80.188"	49.125"	40.125"	6	15.563"	24"	784 lbs.
MTE98A	Aluminum	DRW	103.813"	94.125"	54.125"	40.125"	6	20"	24"	895 lbs.
MTE108A	Aluminum	SRW	113.125"	80.375"	49.125"	40.125"	6	15.625"	24"	820 lbs.
MTE108A	Aluminum	DRW	113.125"	94.125"	54.125"	40.125"	6	20"	24"	912 lbs.
MTE132A	Aluminum	DRW	137.125"	94.125"	54.125"	40.125"	8	20"	24"	1,124 lbs.

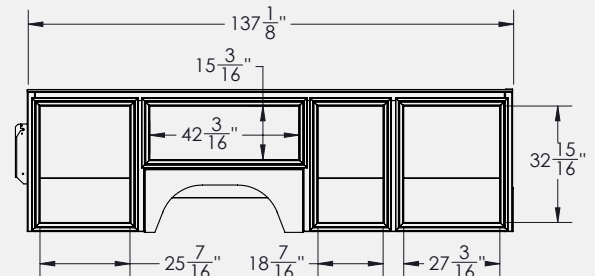
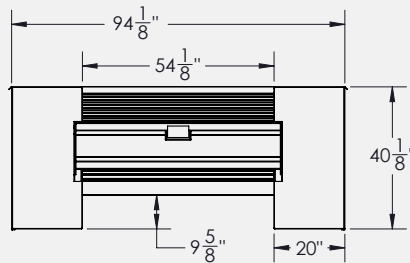
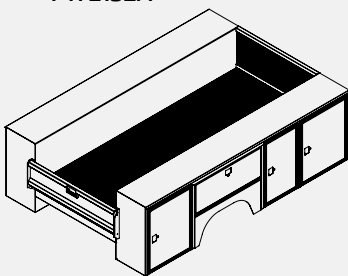
MTE98A



MTE108A



MTE132A



# Options



Liftgate & Bulkhead



Crane, Air Compressor, Engine & Auxillary Fuel Tank



Durabed Liner in Loadspace and Compartment Floors



MTE Ladder Rack



Tonneau Cover



Cab Rack with Strobe Light, Spot Light, Work Lights, Durabed Lining in Loadspace & E-Track



Top Packs



Welding Platform





## Seven Locations

**MONROE** 1051 W. 7th Street, Monroe, WI 53566 • 800.978.8785

**MARSHFIELD** 1601 E. 29th Street, Marshfield, WI 54449 • 800.882.1900

**DE PERE** 1151 W. Main Avenue, DePere, WI 54115 • 877.814.7605

**JOLIET** 812 Draper Avenue, Joliet, IL 60432 • 800.892.7052

**FLINT** 2400 Reo Drive, Flint, MI 48507 • 877.233.2030

**LOUISVILLE** 12001 Westport Rd, Louisville, KY 40245 • 800.978.8785

**LITCHFIELD - MONROE TOWMASTER**   
61381 US Hwy 12, Litchfield, MN 55355 • 888.878.8777



MTE Headquarters - Monroe, WI



**Nationwide Ship-Thru Available**

Visit Us Online at [www.monroetruck.com](http://www.monroetruck.com)



Monroe Truck Equipment  
1051 W. 7th Street  
Monroe, WI 53566