



BIG Deal SALE

NO INTEREST & NO PAYMENTS UNTIL 2026* ON A WIDE SELECTION OF MATTRESSES ON APPROVED CREDIT* (IF PAID IN FULL)

DEPTHS Medium 12.5"

- Precisions Support System
- Beautyrest ActiveResponse Memory Foam
- InfiniCool
- Lush Sleep Surface

QUEEN MATTRESS
\$899

Twin Mattress \$799
Double Mattress \$849
King Mattress \$1299
Box Spring Extra



DRSG_24JUN_SIMMONS

Lush
Sleep Surface

Lush sleep surface made with up to 50 plastic bottles diverted from the ocean.

WIN YOUR PURCHASE UP TO \$5,000*

Pay using your store credit card between July 1-31, 2024 and you'll automatically be entered to win the value of your purchase up to \$5000!

***Contest is open to legal residents of Canada that are of the age of majority and the primary account holder of a Fairstone-issued Credit Card with a participating Retailer. Enter by making a purchase using your Fairstone-issued Credit Card at a participating Retailer or by the 'no purchase' method. Winner will be selected on August 10, 2024, and the prizes will be fulfilled by Sept. 2024. Correct answer to mathematical skill-testing question required. Contest rules at fairstone.ca/drsg-rules



**BUY NOW!
PAY LATER!**
We have financing

With flexible payment plans you can:

- Purchase the items you want today
 - Pay for your purchase over time
- Use your available credit whenever you want to shop

Beautyrest



DRSG II Tight Top

Antimicrobial Fibre, 1/2" AirFeel™ Medium Foam, 1/2" AirFeel™ Firm Foam, 700 Beautyrest® Pocketed Coils, High-Density Foam Encasement

QUEEN MATTRESS

\$599

Twin Mattress \$499
Double Mattress \$549
King Mattress \$799
Box Spring Extra

DRSG III Comfort Top

800 Beautyrest Pocketed coil

Antimicrobial Fibre, 1" 1/2" AirFeel™ Medium Foam, 2" Plush Comfort Foam, 1/2" AirFeel™ Firm Foam, Gel-Infused Memory Foam, High-Density Foam Encasement

QUEEN MATTRESS

\$699

Twin Mattress \$599
Double Mattress \$649
King Mattress \$899
Box Spring Extra

DRSG IV Pillow Top

Antimicrobial/Stain-Resistant Cover,

Antimicrobial Fibre, 1" AirFeel™ Medium Foam, 1/2" AirFeel™ Medium Foam, Gel-Infused Memory Foam, 1" Plush Comfort Foam, Comfort Response Latex, 900 Beautyrest® Pocketed Coils, High-Density Foam Encasement

QUEEN MATTRESS

\$899

Twin Mattress \$799
Double Mattress \$849
King Mattress \$1099
Box Spring Extra

PURCHASING THE RIGHT PILLOW FOR YOU



We think of pillows as "the bed for your head" because that's how important they are to getting the best nights rest possible. Our Sleep Experts can match your sleep style (the most common position you sleep in) with a pillow that offers you all the support you need. What's more, unlike other pillow retailers, you can actually try them out on a mattress inside our stores to feel the differences for yourself.



DIVER Pillow Top Plush 14.75"

- Precisions Support System
- Beautyrest ActiveResponse Memory Foam
- InifiCool
- Lush Sleep Surface

QUEEN MATTRESS

\$1049

Twin Mattress \$949
Double Mattress \$999
King Mattress \$1349
Box Spring Extra



Beautyrest
HARMONY™

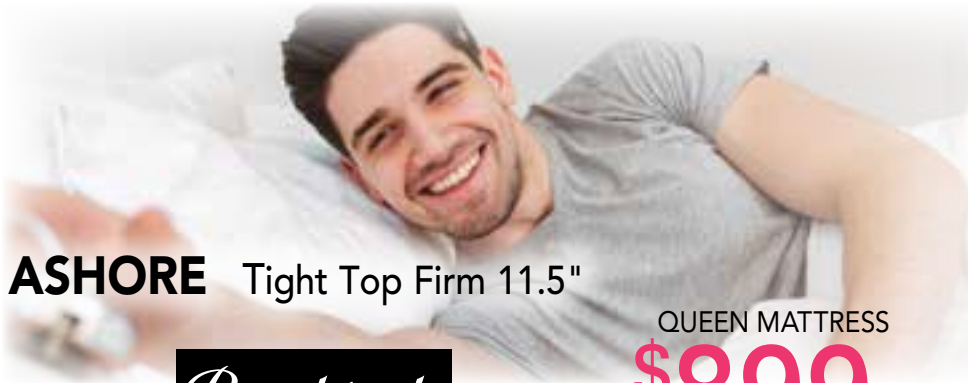


Premium memory foam with contouring comfort for your body to help alleviate aches and pains caused by pressure



NO INTEREST & NO PAYMENTS UNTIL 2026*

ON A WIDE SELECTION OF MATTRESSES ON APPROVED CREDIT* (IF PAID IN FULL)



SLEEP IS A BEAUTIFUL THING

Great sleep is incredibly powerful. Science is proving that it's just as important to our health and happiness as proper diet and exercise. We believe that everyone deserves the benefits that come from a more comfortable sleep.

ASHORE Tight Top Firm 11.5"

QUEEN MATTRESS

\$899



- Precisions Support System
- Beautyrest ActiveResponse Memory Foam
- Breathable, Moisture-Wicking Fabric
- Lush Sleep Surface

Twin Mattress \$799
 Double Mattress \$849
 King Mattress \$1199
 Box Spring Extra



AQUARIUS Pillow Top Medium 13.25"

QUEEN MATTRESS

\$1049



- Precisions Support System
- Beautyrest ActiveResponse Memory Foam
- Breathable, Moisture-Wicking Fabric
- Lush Sleep Surface

Twin Mattress \$949
 Double Mattress \$999
 King Mattress \$1349
 Box Spring Extra



Lush
Sleep Surface

Lush sleep surface made with up to 50 plastic bottles diverted from the ocean.

GRACEFUL GUARD Firm 13"

QUEEN MATTRESS

\$1349

- Precisions Support System
- Beautyrest ActiveResponse Memory Foam
- InfiniCool LUX
- Lush Sleep Surface

Twin Mattress \$1199
 Double Mattress \$1249
 King Mattress \$1599
 Box Spring Extra

GLISTENING GLACIERS

Plush Pillowtop 15"

QUEEN MATTRESS

\$1549

- Precisions Support System
- Beautyrest ActiveResponse Memory Foam
- InfiniCool LUX
- Lush Sleep Surface

Twin Mattress \$1349
 Double Mattress \$1399
 King Mattress \$1749
 Box Spring Extra



NO INTEREST & NO PAYMENTS UNTIL 2026* ON A WIDE SELECTION OF MATTRESSES ON APPROVED CREDIT* (IF PAID IN FULL)



Beautyrest
HARMONY

**ALL HARMONY
ON SALE**

HAZY HOLLOW

Firm, Pillow Top 13.5"

- Consistent Support and Advanced Motion Isolation
- Advanced Pressure Relief
- InfiniCool MAX
- Lush Sleep Surface

QUEEN MATTRESS
\$1599

Twin Mattress \$1699
Double Mattress \$1549
King Mattress \$1899
Box Spring Extra

HUMBLE HIGHLANDS

Firm, Pillow Top 15"

- Consistent Support and Advanced Motion Isolation
- Advanced Pressure Relief
- InfiniCool MAX
- Lush Sleep Surface

QUEEN MATTRESS
\$1749

Twin Mattress \$1649
Double Mattress \$1799
King Mattress \$2049
Box Spring Extra



* On approved credit on all Mattresses if paid in full. EXCLUDING CASH & CARRY ITEMS, CLEAR-OUTS, PRICE BUSTERS AND APPLIANCES. SEE STORE FOR DETAILS. Prices shown are for selected fabrics. An administration fee, taxes, & delivery charge fee may be due at time of purchase. See store for details.

A \$21 annual membership fee may be charged to your Account subject to certain conditions. Financing is provided by Fairstone Financial Inc. and is subject to all the terms and conditions in your cardholder agreement and the credit promotional plan disclosure statement (collectively the "Account Agreement"). Finance Charges will accrue on the purchase from the beginning of the credit promotional period, but no minimum payments will be due during the credit promotional period. However, if you pay the purchase price in full by the expiration date of the credit promotional period, all of the accrued Finance Charges will be waived and no Finance Charges will be assessed on the purchase. Otherwise, if you choose to not pay the purchase price in full by the expiration date of the credit promotional period, all of the accrued Finance Charges will be assessed at that time.

On termination or expiry of the credit promotional plan (or for purchases that are not part of the credit promotional plan), the standard APR of 31.99% and the terms of the Regular Credit Plan will apply to all outstanding balances owing. This offer is valid up to and including July 31, 2024, cannot be used for previous purchases and cannot be combined with any other offers, promotions or special incentive programs. Certain terms and conditions apply. See store and Account Agreement for further information.



917 2nd Ave Wainwright, AB T9W 1C5
Ph: (780) 842-2730

STORE HOURS

MONDAY TO FRIDAY 9:30 am - 5:30 pm
SATURDAY 9:30 am - 5:30 pm
SUNDAY - CLOSED

www.armstrongsfurniture.com



BUY NOW! PAY LATER!

Scan QR code to apply for financing

