

Sisters Sleep Gallery STEREO WAREHOUSE

LOWEST
PRICE OF
THE YEAR

coast to coast
SALE



UP TO **\$5,000!** ***

** Pay using your store credit card between October 1-31, 2025 and you'll automatically be entered to win the value of your purchase up to \$5000!
Contest is open to legal residents of Canada that are of the age of majority and the primary account holder of a Fairstone-issued Credit Card with a participating Retailer. Enter by making a purchase using your Fairstone-issued Credit Card at a participating Retailer or by the 'no purchase' method. Winner will be selected in November, 2025 and the prize will be fulfilled by end of December 2025. Correct answer to mathematical skill-testing question required. Contest rules at fairstone.ca/drrsg-rules



Fairstone Financial Inc. is a wholly owned subsidiary of Fairstone Bank of Canada.

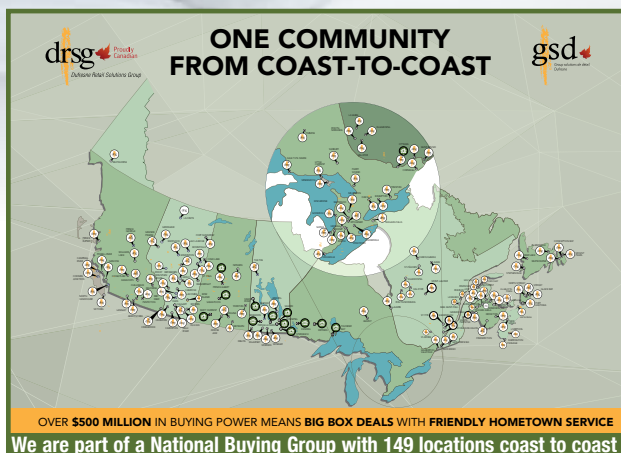
PRIME Tight Top, 14.5" model
1.2k Nano coils

Twin Mattress \$1499
Double Mattress \$1549
King Mattress \$1899
Box Spring Extra

QUEEN MATTRESS
\$1599
REG. \$2949

Signature Individualized Support + Motion Separation Beautyrest

- 1,700 Triple Stranded Pocketed Coil® Technology System
- ComfortSleep Climate™ Surface
- Speciality Foam Profile 4.5"
- Beautyrest® GEL Memory Foam
- Beautyrest® GelTouch HD Foam



Beautyrest
EXCEPTIONNEL



NO INTEREST & NO PAYMENTS UNTIL 2027 IF PAID IN FULL*

ON A WIDE SELECTION OF MATTRESSES ON APPROVED CREDIT*

Beautyrest®

DRSG IV Pillow Top

Twin Mattress \$799
Double Mattress \$849
King Mattress \$1099
Box Spring Extra

QUEEN MATTRESS

\$899



- Antimicrobial/Stain-Resistant Cover,
- Antimicrobial Fibre, 1" AirFeel™ Medium Foam,
- 1/2" AirFeel™ Medium Foam, Gel-Infused Memory Foam,
- 1" Plush Comfort Foam, Comfort Response Latex,
- 900 Beautyrest® Pocketed Coils, High-Density Foam Encasement



DRSG III Comfort Top, 800 Beautyrest Pocketed coil

DRSG II Tight Top

- Antimicrobial Fibre,
- 1/2" AirFeel™ Medium
- Foam, 1/2" AirFeel™
- Firm Foam, 700 Beautyrest®
- Pocketed Coils, High-Density Foam Encasement

Twin Mattress \$499
Double Mattress \$549
King Mattress \$899
Box Spring Extra

QUEEN MATTRESS

\$599



- Antimicrobial Fibre,
- 1" 1/2" AirFeel™ Medium Foam,
- 2" Plush Comfort Foam,
- 1/2" AirFeel™ Firm Foam,
- Gel-Infused Memory Foam,
- High-Density Foam Encasement

QUEEN MATTRESS

\$699

Twin Mattress \$599
Double Mattress \$649
King Mattress \$899
Box Spring Extra

PURCHASING THE RIGHT PILLOW FOR YOU

We think of pillows as "the bed for your head" because that's how important they are to getting the best nights rest possible. Our Sleep Experts can match your sleep style (the most common position you sleep in) with a pillow that offers you all the support you need. What's more, unlike other pillow retailers, you can actually try them out on a mattress inside our stores to feel the differences for yourself.



ELA Level One, 12.5" Firm Tight Top

Twin Mattress \$799
Double Mattress \$849
King Mattress \$1199
Box Spring Extra

Beautyrest®

- 875 Density Pocketed Coil® Technology
- Beautyrest® Antimicrobial Fibre Technology Encasement
- Beautyrest® ActiveResponse™ Memory Foam

QUEEN MATTRESS

\$899

Adjustable Base Compatible



HORIN Level Two, 14.5" Tight Top Firm

Premier Individualized Support + Motion Separation

- 1000 Density Pocketed Coil® Technology
- InfiniCool MAX Technology Cooling Surface
- SurfaceTouch™ Gel Memory Foam
- 2 layers of Beautyrest® ActiveResponse™ Memory Foam
- World Class Relief™ HD Foam

Beautyrest.
WORLD CLASS

Step up to a world class experience

100
A CENTURY OF INNOVATION

Beautyrest.
WORLD CLASS™

Step up to a world class sleep experience

For the past 100 years, Beautyrest has helped transform the sleep industry for the better. As the inventor of Pocketed Coil® Technology, King and Queen mattress sizes, the Hybrid-construction mattress, and the no-flip mattress design, Beautyrest continues to combine its industry-leading history with sleep-enhancing innovations to deliver a premium sleep.

Twin Mattress \$1399
Double Mattress \$1449
King Mattress \$1799
Box Spring Extra

QUEEN MATTRESS
\$1499

Adjustable Base Compatible



Adjustable Base Compatible

Twin Mattress \$1549
Double Mattress \$1599
King Mattress \$1949
Box Spring Extra

QUEEN MATTRESS
\$1649



LIRIC Level Two, 16.5" Pillow Top Plush

Premier Individualized Support + Motion Separation

- 1000 Density Pocketed Coil® Technology
- 2 layers of Beautyrest® ActiveResponse™ Memory Foam
- World Class Relief™ HD Foam

Beautyrest.
WORLD CLASS



Beautyrest
WORLD CLASS

100 YEAR ANNIVERSARY CELEBRATION

ELARA Hybrid Level One,
16" Tight Top, Firm



Premier Individualized Support + Motion Separation

- 1000 Density Pocketed Coil® Technology
- InfiniCool MAX Technology Cooling Surface
- SurfaceTouch™ Gel Memory Foam
- 2 layers of Beautyrest® ActiveResponse™ Memory Foam

PAIR ANY
Beauty Rest Mattress
with our basellogic™

STARTING AT
TWIN \$649
BRONZE



QUEEN MATTRESS
\$1299

Step up to a world class experience

Twin Mattress \$1199
Double Mattress \$1249
King Mattress \$1599
Box Spring Extra



NO INTEREST & NO PAYMENTS UNTIL 2027 IF PAID IN FULL*

ON A WIDE SELECTION OF MATTRESSES ON APPROVED CREDIT* (IF PAID IN FULL)

*O.A.C on all Mattresses if paid in full. EXCLUDING CASH & CARRY ITEMS, CLEAR-OUTS, PRICE BUSTERS AND APPLIANCES. SEE STORE FOR DETAILS. Prices shown are for selected fabrics. An administration fee, taxes, & delivery charge fee may be due at time of purchase. See store for details

On approved credit. A \$35 annual membership fee may be charged to your Account subject to certain conditions. Financing provided by Fairstone Financial Inc. and is subject to all the terms and conditions in your cardholder agreement and the credit promotional plan disclosure statement (collectively the "Account Agreement"). Finance charges will accrue on the purchase from the beginning of the credit promotional period of the No Interest, No Payments until 2027, but no minimum payments will be due during the credit promotional period. However, if you pay the purchase price in full by the expiration date of the credit promotional period, all of the accrued Finance Charges will be waived and no Finance charges assessed on the purchase. Otherwise, if you choose to not pay the purchase price in full by the expiration date of the credit promotional period, all of the accrued Finance Charges will be assessed at that time.

On termination or expiry of the credit promotion plan (or for purchases that are not part of the credit promotional plan), the standard APR of 31.99% and the terms of the regular credit plan will apply to all outstanding balances owing. The offer is valid up to and including October 31, 2025, cannot be used for previous purchases and cannot be combined with any other offers, promotions or special incentive programs. Certain terms and conditions apply. See store and account agreement for further information.

Sisters
Sleep Gallery

STEREO
WAREHOUSE

www.sisterskamloops.ca 198 Victoria St W • Kamloops, BC

Sisters Sleep Gallery: 250-377-3818

Stereo Warehouse: 250-374-3848

Hours Monday - Saturday 10:00 AM - 5:00 PM, Sunday 12:00 AM - 5:00 PM