

sawatzky's
FURNITURE & APPLIANCES

WINKLER

MORDEN

BIG DEAL sale

April 16th to
May 27th,
2026

FRIGIDAIRE
GALLERY

Smudge-Proof
STAINLESS STEEL



\$1799

20.0 cu. ft. Standard-Depth French Door Refrigerator

Our freshness system is packed with technologies that keep food fresh and reduce food waste.

GRFN2023AF



\$549



\$1899

30" Electric Range with Stone-Baked Pizza

In addition to Stone-Baked Pizza, the oven offers over 15+ different ways to cook like No Preheat, Air Fry, Slow Cook and more!

GCFE307CBF

FRIGIDAIRE
GALLERY
**BUY MORE
SAVE MORE**

Buy 2 eligible Frigidaire Gallery & Frigidaire Professional appliances,
Save an additional \$200

Buy 3+ eligible Frigidaire Gallery & Frigidaire Professional appliances,
Save an additional \$300

INNOVATION of the Month



Stone-Baked Pizza option:

Make Pizzeria Styled Pizza at Home!

Introducing the first and only residential oven capable of cooking pizza at 750°F+, the high-heat needed to create authentic restaurant-quality pizzas, in as little as two minutes - right in your oven.

Scan to see it in action

Watch how the Stone-Baked Pizza option works.
1 MINUTE demo.



24" Stainless Steel Tub Built-In Dishwasher with CleanBoost™

CleanBoost™ Technology maximizes the power of your detergent by premixing water and detergent before it hits your dishes.

GDSH4715AF

\$899

1.9 cu. ft. Over-the-Range Microwave with Sensor Cook

Sensor Cook delivers delicious meals by automatically determining and setting the appropriate power levels and cook time.

GMOS1964AF

FRIGIDAIRE

1.7 cu. ft. Over-the-Range Microwave

Makes meal time easier with Convenient Quick Start cooking options that help you put delicious meals on the table in minutes.

FMOS174CBW

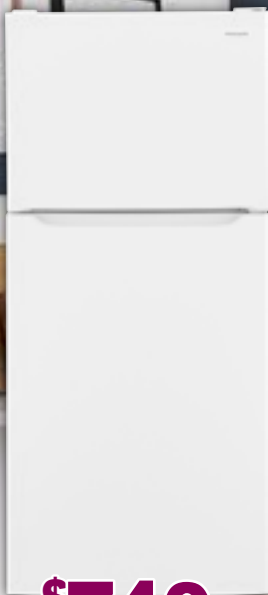
\$349

1.8 cu. ft. Over-the-Range Microwave

Makes meal time easy with Sensor Cook Technology that automatically detects food and adjusts power levels and cooking times giving you great-tasting results.

FMOW1852AS

\$449



\$749

18 cu. ft. Garage Ready Top Freezer Refrigerator

Our humidity-controlled crispers keep produce fresh for longer, allowing you to waste less and save money.

FFHT1814YW



\$999

30" Electric Range with EvenTemp®

EvenTemp® cooktop element delivers consistent results every time, because it reduces hot and cold spots in your pan.

FCRE306CAW



\$549

24" Built-In Dishwasher

DishSense® sensor technology adjusts cleaning performance based on soil levels to eliminate pre-rinse.

FDHP4336AW



\$1099

19 cu. ft. Standard-Depth Bottom Freezer Refrigerator

CrispSeal® crisper drawers easily fits narrow and small kitchen spaces.

FRBE1925AF



\$1499

30" Front Control Induction Range with Air Fry

Experience faster, cleaner, and healthier cooking with induction technology that boils water 2x faster than gas and keeps the cooktop cool for easy cleanup.

FCFI308CBS



\$699

24" Dishwasher

Offers a more complete clean with sensor technology that adjusts cleaning performance based on soil level, quiet operation, and five convenient wash cycles.

FDSH4502BF



\$1699

20 cu. ft. Standard-Depth Bottom Freezer Refrigerator

Our freshness system is packed with technologies that keep food fresh and reduce food waste, such as our cooling system, advanced crispers, and our genuine air and water filtration.

GRBN2012AF



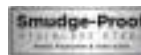
\$2199

29 cu. ft. Standard-Depth French Door Refrigerator

Freshness system maintains the taste and texture of even your most delicate foods. Our freshness system is packed with technologies that keep food fresh and reduce food waste, such as our cooling system, advanced crispers, and our genuine air and water filtration.

GRFN2953AF

FRIGIDAIRE GALLERY **BUY MORE SAVE MORE**



\$1399

30" Rear Control Electric Range with Total Convection

Features our most powerful and advanced convection system, which enables over 15 cooking modes.

GCRE306CBF



\$1499

30" Front Control Electric Range with Total Convection

Features our most powerful and advanced convection system, which enables over 15 cooking modes.

GCFE305CBF



\$699

24" Ultra Quiet 42 dBA Dishwasher

Complete clean with sensor technology that adjusts cleaning performance with an ultra-quiet 42 dBA operation.

GDPH4515AF



\$899

24" Stainless Steel Tub Built-In Dishwasher with CleanBoost™

Offers a sanitize option, an adjustable rack, LED floor indicator light, 30-min quick wash.

GDSP4715AF

Buy 2 eligible Frigidaire Gallery & Frigidaire Professional appliances,

Save an additional \$200

Buy 3+ eligible Frigidaire Gallery & Frigidaire Professional appliances,

Save an additional \$300

FRIGIDAIRE



\$749

13 cu. ft. Garage Ready Upright Freezer

It ensures consistent freezing with the EvenTemp™ cooling system and provides flexible organization. Enjoy peace of mind with power outage assurance and the door ajar and high temp alarms. FFUE1326AW



\$899

15 cu. ft. Garage Ready Chest Freezer

Designed for flexibility, it switches from freezer to fridge with ease. With Freeze Boost, you can rapidly freeze items to maintain peak freshness. FFCL1562AW



\$1099

21 cu. ft. Garage Ready Upright Freezer

Effortlessly converts to a refrigerator for ultimate flexibility when you need it. Easily organize your favorites with our flexible organization system. FFUV2126AW



\$699

\$599

FRIGIDAIRE

4.7 cu. ft. I.E.C Top Load Washer

Offers conveniences like automatic load sensing, 4 soil levels, a fast wash, and an extra rinse option. FLWW7000AW

7 cu. ft. Electric Dryer

Large capacity with 8 dry cycles including Heavy Duty, Delicates, and Quick Dry. It offers conveniences like sensor dry, a dryer light, and a reversible dryer door. FLVE700CAW



Laundry Tower™ Single Unit Front Load 5.1 cu. ft. I.E.C Washer and 8 cu. ft. Electric Dryer

Full-size and fully integrated front load electric Electrolux Laundry Tower™ features a stacked design that takes up half the floor space, all with an easy to reach control panel. The washer features LuxCare® Wash that provides a thorough clean to clothes and fabrics. ELTE730CAD

\$2199



\$1049

\$949



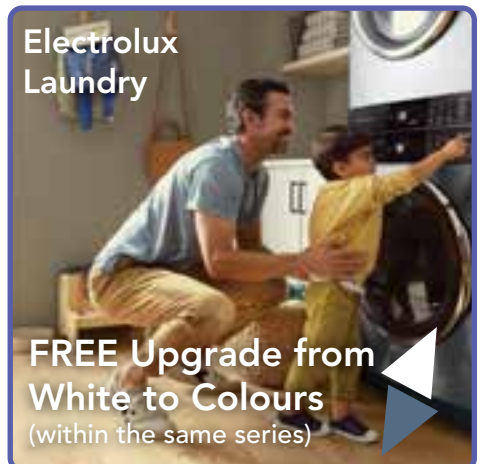
Front Load Perfect Steam™ Washer with LuxCare® Wash - 5.2 cu. ft. I.E.C

Features LuxCare® Wash and Perfect Steam™ technology to provide a thorough clean for clothing and fabrics. ELFW7437AT

Front Load Perfect Steam™ Electric Dryer with Instant Refresh – 8.0 cu. ft.

Features the Instant Refresh cycle which allows you to remove wrinkles and refresh clothing in just 10 minutes. ELFE743CAT

Electrolux Laundry



FREE Upgrade from White to Colours
(within the same series)



Luxury-Glide® Pedestal with Spacious Storage Drawer

They are perfect for storing laundry supplies, extra towels, cleaning supplies and more. EPWD257UTT



\$299

FRIGIDAIRE
PROFESSIONAL

Smudge-Proof
STAINLESS STEEL
Resists fingerprints & cream splatters

BUY MORE SAVE MORE

Buy 2 eligible Frigidaire
Gallery & Frigidaire
Professional appliances,

**Save an
additional \$200**

Buy 3+ eligible Frigidaire
Gallery & Frigidaire
Professional appliances,

**Save an
additional \$300**



\$1099



\$899

\$2199



\$3499

1.9 cu. ft. Over-the Range Microwave with Convection

This microwave delivers great tasting results with Convection Baking technology, which offers the performance of an oven and the convenience of a microwave.

PMOS198CAF

24" Stainless Steel Tub Built-In Dishwasher with CleanBoost™

CleanBoost® technology amplifies the power of your detergent by premixing it with water before it touches your dishes delivering powerful cleaning results and removing tough baked-on foods.

PDSH4816BF

30" Electric Range with Total Convection

Features our most powerful and advanced convection system, which enables cooking modes like No Preheat, Air Fry, Slow Cook, Steam Bake, Steam Roast, Convection Roast, Convection Bake and more!

PCFE308CAF

21 cu. ft. Counter-Depth 4-Door French Door Refrigerator

Offers the Custom-Flex® Temp Drawer so you can get extra space for all your most used items, from wine to frozen pizza. It helps keep produce crisp and flavorful for longer with CrispSeal® Fresh crispers featuring 3 advanced technologies.

PRMC2290BF

sawatzky's
FURNITURE & APPLIANCES

**890 THORNHILL STREET, MORDEN, MB
R6M 1J9 204-822-3593**

HOURS:
MONDAY – FRIDAY: 9:30 AM – 6:00 PM
SATURDAY: 9:30 AM – 5:00 PM
CLOSED SUNDAY

**295 KIMBERLY RD. WINKLER, MB
R6W 0H7 204-325-8088**

HOURS:
MONDAY – FRIDAY: 9:30 AM – 6:00 PM
SATURDAY: 9:30 AM – 5:00 PM
CLOSED SUNDAY

**APPLIANCE SERVICE DIRECT LINE
204-331-5982**



WINKLER | MORDEN

SAWATZKYS.COM