



Great **CANADIAN** **S** **LE**

**TAKE
3 YEARS
TO PAY***

**0% INTEREST - 36 EQUAL
MONTHLY PAYMENTS**

on a wide selection of furniture & mattresses.
**Plus applicable fees and taxes. See store for details.

THE FAIRBROOK
RECLINING SOFA

\$1999
as low as \$55⁵³/month**

PØDIUM



▼ **MATCHING ROCKER
RECLINER \$1499**



POWER
EXTRA



▶ **RECLINING LOVESEAT \$1949**

**MADE IN
CANADA**

Modern Sophistication

The fabric gives this sofa a laid-back style. This timeless casual sofa is a good investment for any room as it suits many home decor styles. A combination of hardwood, softwood, and engineered wood forms the frame for strength and durability. This motion sofa fits three people with ease.

*** Pay using your store credit card between May 1-31, 2026 and you'll automatically be entered to win the value of your purchase up to \$5000!
Contest is open to legal residents of Canada that are of the age of majority and the primary account holder of a Fairstone-issued Credit Card with a participating Retailer. Enter by making a purchase using your Fairstone-issued Credit Card at a participating Retailer or by the 'no purchase' method. Winner will be selected in June 8th, 2026 and the prize will be fulfilled by end of July 2026. Correct answer to mathematical skill-testing question required. Contest rules at fairstone.ca/drsg-rules



© Trademarks of Fairstone Financial Inc.
Fairstone Financial Inc. is a wholly owned subsidiary of Fairstone Bank of Canada.

Win your purchase UP TO **\$5,000!*****

Create your dream home TODAY!



You have the **INSPIRATION**, and now you have the **POWER** to create the home of your dreams with your Card. **FINANCE YOUR WAY** with our flexible interest-free payment options. **PLUS**, cardholders enjoy special offers and invitations to exclusive sale events!

SHOP LOCAL *More Personal*

By supporting local businesses, you are in turn helping your local economy by creating more jobs. Even a small business needs enough hands to help it sell its products and services, which is why the more we support them, the more jobs will be created and the better off our local communities will be.

MADE IN CANADA THE RONIN **MADE IN CANADA**
PODIUM



POWER EXTRA



POWER EXTRA

FABRIC RECLINING SOFA

Reclining Loveseat \$1949

Glider Recliner \$999

\$1999

as low as \$55⁵³/month**

TAKE 3 YEARS TO PAY*

0% INTEREST - 36 EQUAL MONTHLY PAYMENTS

on a wide selection of furniture & mattresses.

**Plus applicable fees and taxes. See store for details.



DECOR-REST THE VERNON

Zoom Grey



Create your Sofa

SOFA \$1099

Loveseat \$1079 Chair \$849

as low as \$30⁵²/month**

CUSTOMIZE EVERY DETAIL

Multiple colour options and different configurations available



Over 60 Custom order Colours, patterns, styles to match any room

Proudly built in **CANADA** by our family, since 1972. A leading Canadian manufacturer of fine upholstery. We take great pride in making furniture that will last for generations.

MARYMOUNT II PODIUM EQ3



LEATHER MATCH SOFA \$2199

Loveseat \$2149 Chair \$1849 as low as \$61⁰⁸/month**



BUY NOW! PAY LATER!*

We have
financing

With flexible payment
plans you can:

- Purchase the items you want today
- Pay for your purchase over time
- Use your available credit whenever you want to shop



PODIUM

DRESSER \$1599,
MIRROR \$399,
CHEST \$1099,
NIGHT STAND \$499,

Storage box Extra

THE STELLA
in Charcoal

QUEEN BED **\$1199**
"Solid Pine" as low as \$33³¹/month**

ECO-FRIENDLY CHOICE

Choosing our Pine wood furniture means investing in the planet's future. It's not just furniture; it's a sustainable choice that reduces your carbon footprint, one piece at a time.

SUSTAINABLE FORESTRY

Committed to the environment, our Pine wood is sourced from sustainable forests. This not only supports healthy ecosystems but also ensures the longevity of timber resources for future generations.



THE ELLESMERE
in Champagne

DRESSER \$1599, MIRROR \$399,
CHEST \$1099, NIGHT STAND \$499,

QUEEN BED

\$1199

as low as \$33³¹/month**

Storage box Extra

"Solid Pine"



PODIUM

CUSTOM STYLES IN ANY OF THESE FINISHES

Natural Durability

Discover the enduring charm of Pine wood. Renowned for its natural durability, Pine ensures our furniture stands the test of time, offering you a blend of strength and beauty that lasts.

CUSTOMIZE EVERY DETAIL

CUSTOM PROGRAM FINISH

We can produce any of these styles in any of these finishes.

Charcoal



Souffle



Truffle



Natural



Champagne



ECO-FRIENDLY CHOICE

Choosing our Pine wood furniture means investing in the planet's future. It's not just furniture; it's a sustainable choice that reduces your carbon footprint, one piece at a time.

SUSTAINABLE FORESTRY

Committed to the environment, our Pine wood is sourced from sustainable forests. This not only supports healthy ecosystems but also ensures the longevity of timber resources for future generations.



PODIUM

"Solid Pine" in Natural

Storage box Extra

THE HARLOW

DRESSER \$1399, MIRROR \$399,
CHEST \$899, NIGHT STAND \$449,

QUEEN BED **\$999**
as low as \$27⁷⁵/month**



Posturepedic



MAPLE LEAF Eurotop

13.5" Profile Height 950 HD Pocket Coils

COMFORT LAYERS

- CertiPUR-US® Certified SealySupport™ HD Foam
- PostureTech™ Coil
- SolidEdge™
- Targeted Nano Support Coils
- SealyLoft™ Quilt with Moisture Wicking Fibres

Twin Mattress	\$699
Double Mattress	\$749
King Mattress	\$1099
Box Spring Extra	

QUEEN MATTRESS
\$799
 as low as \$22¹⁹/month**



reflexion REFLEXION PLUS Lifestyle Base

Head and Foot Adjustment, Cordless Remote, Personalized Zero Gravity & Positions, Dimmable Undersbed Lighting, Child Lock Button, Bed can be lowered during power outage or remote failure.

QUEEN BASE
\$1099

Choose the right Reflexion base for your needs. Also available: twin long and double size.

**TAKE
 3 YEARS
 TO PAY***

**0% INTEREST - 36
 EQUAL MONTHLY
 PAYMENTS**

on a wide selection of furniture & mattresses.

*On approved credit.

Terms and conditions apply.

See store for info.



PURCHASING THE RIGHT PILLOW FOR YOU

We think of pillows as "the bed for your head" because that's how important they are to getting the best nights rest possible. Our Sleep Experts can match your sleep style (the most common position you sleep in) with a pillow that offers you all the support you need. What's more, unlike other pillow retailers, you can actually try them out on a mattress inside our stores to feel the differences for yourself.

WE ARE YOUR #1 LOCAL SOURCE FOR CANADIAN-MADE  MATTRESSES!

PODIUM EQ3 

AVAILABLE IN CLAMSHELL
DISPONIBLE EN
EMBALLAGE COQUILLE

THE MELBOURNE

2 PIECE 'LEATHER MATCH' SECTIONAL

\$4299
as low as \$119⁴¹/month**



**CUSTOMIZE
EVERY DETAIL**
CUSTOM PROGRAM FINISH

We can produce any of these styles
in any of these finishes.



Elevate your dining space with the timeless elegance of the Stella Solid Wood Dining Table and Ladder Back Chairs. This set embodies both rustic charm and sophisticated design. With its versatile aesthetic, the Stella Dining Set seamlessly complements a variety of interior styles, from modern farmhouse to contemporary and traditional.

THE STELLA
Natural

5 PIECE DINING SET
62" Table & 4 Chairs

\$2299
as low as \$63⁸⁶/month**



2 chair options - Slat and Ladderback

6 custom finishes available

YOUR STYLE

No matter which design, color or shape fit your tastes, you will find the perfect combination to make your room unique.

CUSTOM STYLES IN ANY OF THESE FINISHES



FEATURES

- Table is premium solid wood construction.
- Robust rectangular design.
- Ample seating.
- Sturdy and durable.
- Modern Farmhouse aesthetic.
- Easy to maintain.



PODIUM



TAKE 3 YEARS TO PAY*

0% INTEREST - 36 EQUAL MONTHLY PAYMENTS

on a wide selection of furniture & mattresses. *On approved credit. Terms and conditions apply. See store for info.

THE KIERAN

This stunning motion collection is sure to draw attention. Blown-fiber backs and high-density foam seats combine with pillow-top arms for unparalleled comfort that you can fully sink into. A triple-bolstered back brings a structured drama to the look, accented by double topstitch details on the back and seat. Power headrest, recline, and lumbar offer infinite opportunities for creating the perfect position, while wall-hugger technology ensures a full recline with as little as 4" of wall clearance.



Power Reclining Loveseat
with Console

\$4199

PØDIUM EQ3 

**LEATHER MATCH
POWER RECLINING SOFA**

\$4199


as low as \$116⁶³/month**

DESIGNED FOR YOU AND YOUR BUDGET

Podium is a collection of dining room furniture proudly made in Canada. Custom manufactured items carefully assembled and finished by artisans devoted to wood crafting - part of a vision that has lived on for 40 years. We believe in offering quality, style and durability at an affordable price.

THE HUXLEY



PØDIUM EQ3 

SOFA

\$1999

Loveseat \$1949 Chair \$1699

as low as \$55⁵²/month**

SHOP LOCAL

You're supporting local not-for-profits



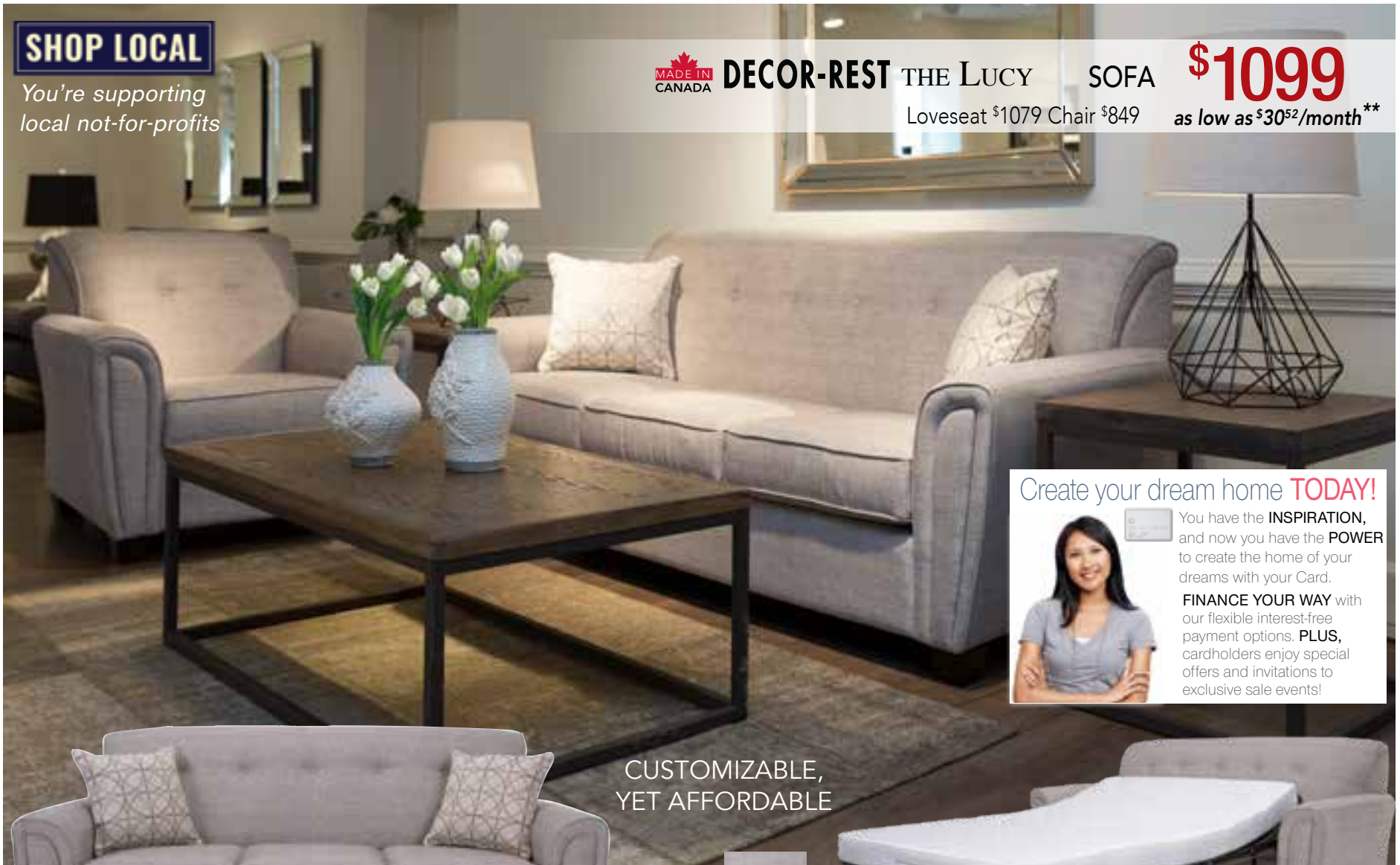
DECOR-REST THE LUCY

SOFA

\$1099

Loveseat \$1079 Chair \$849

as low as \$30⁵²/month**



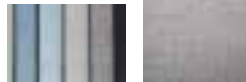
Create your dream home **TODAY!**



You have the **INSPIRATION**, and now you have the **POWER** to create the home of your dreams with your Card.

FINANCE YOUR WAY with our flexible interest-free payment options. **PLUS**, cardholders enjoy special offers and invitations to exclusive sale events!

CUSTOMIZABLE,
YET AFFORDABLE



Create your Sofa

DECOR-REST



SOFA BED \$1699
as low as \$47¹⁹/month**

* O.A.C on all furniture & mattresses EXCLUDING CASH & CARRY ITEMS, CLEAR-OUTS, PRICE BUSTERS AND APPLIANCES. SEE STORE FOR DETAILS. Prices shown are for selected fabrics.

*On approved credit. A \$35 annual fee, as set out in your Account Agreement, may be charged to your account subject to certain conditions. Financing is provided by Fairstone Financial Inc. and is subject to all the terms and conditions in your Retail Credit Agreement, Disclosure Statement and the promotional plan disclosure statement (collectively the "Account Agreement"). The financed amount is divided by the number of months in the promotional period to arrive at equal monthly payments. Interest will not accrue on the financed amount during the promotional period if the required minimum payment is made when due each billing cycle. The terms of the promotional plan will terminate if you default under your Account Agreement. On termination or expiration date of the promotional plan (or for purchases that are not part of the promotional plan), the annual interest rate of 31.99% as shown in your Account Agreement and the terms of the Regular Credit Plan will apply to all outstanding balances. Certain terms and conditions apply. See store and Account Agreement for further information.



3907 15th Avenue
Prince George, BC V2N 1A5
PH: (250) 564-7333

HOURS:

Monday-Thursday 9:30am- 6:00pm

Friday: 9:30am- 7:00pm Sat: 9:00am- 6:00pm

Sunday: 11:00am - 4:00pm

