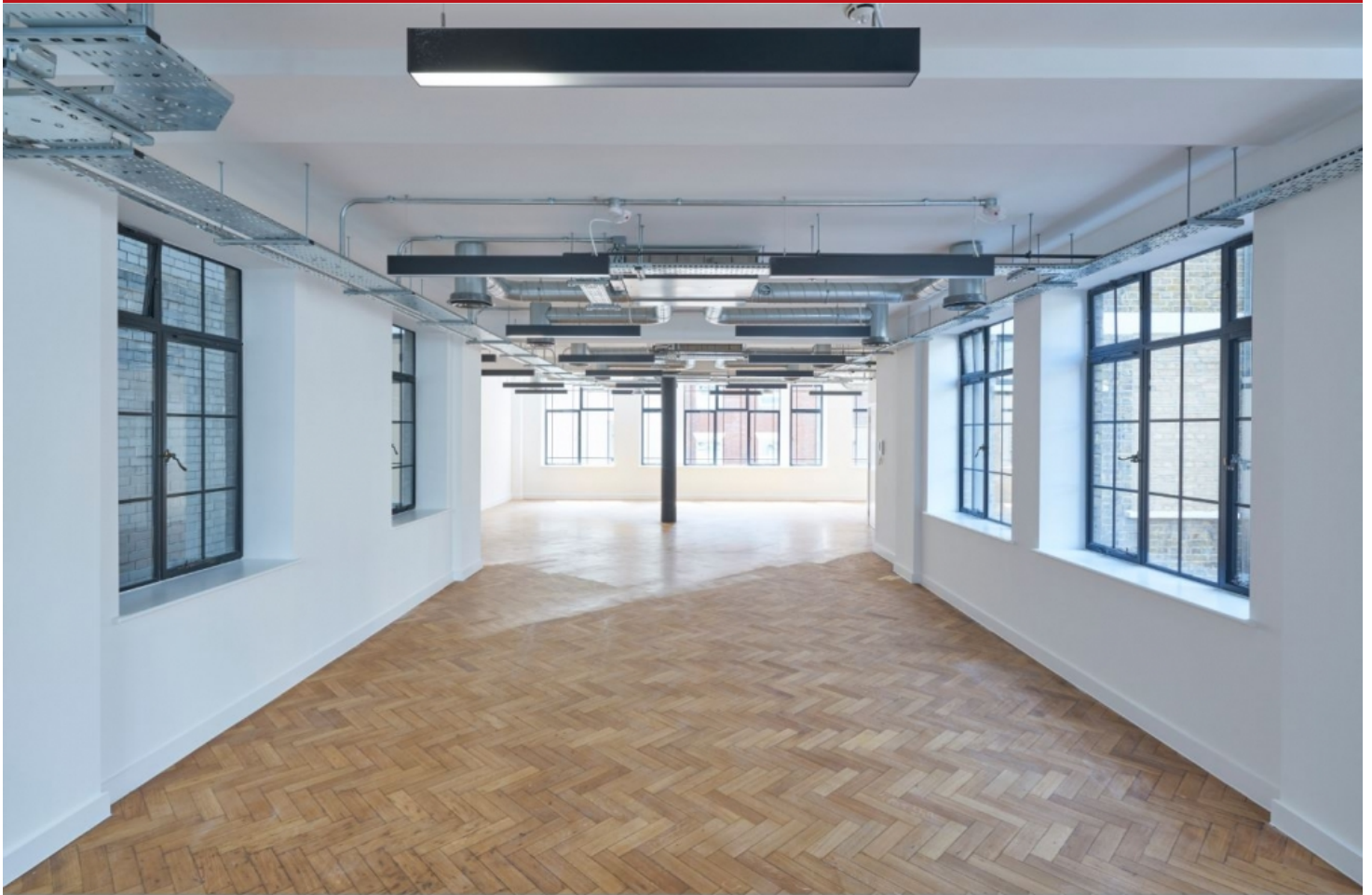


To Let

Office 1,426 sq ft NIA

21 Poland Street, London, Greater London, W1F 8QG



Summary

- An attractive art-deco property with refurbished office accommodation arranged over five upper floors.
- Type: Office
- Tenure: To Let
- Size: 1,426 sq ft NIA
- Rent: £75 per sq ft

Highlights

- Terrace on 5th, 3rd, & 2nd Floors

Location

21 Poland Street is located in the heart of Soho on the eastern side of Poland Street linking Great Marlborough Street with Oxford Street.

Situated less than 300 metres from Oxford Circus Station, the property occupies a prime position within one of the West End's most desirable residential, retail and business neighbourhoods. Bordering the exclusive Mayfair to the West, vibrant Fitzrovia to the North and luxurious St James' to the South, Soho is considered one of the Capital's most diverse and contemporary districts providing a unique urban atmosphere.

Availability

Floor	sq ft
2	1,426
Total	1,426

Terms

A new lease(s) is available direct from the landlord on terms to be agreed.

Viewings

Strictly by appointment by the sole agents

21 Poland Street

<http://www.21polandstreet.com>

Energy Performance Rating

This property has been graded as 51(C).

Rent

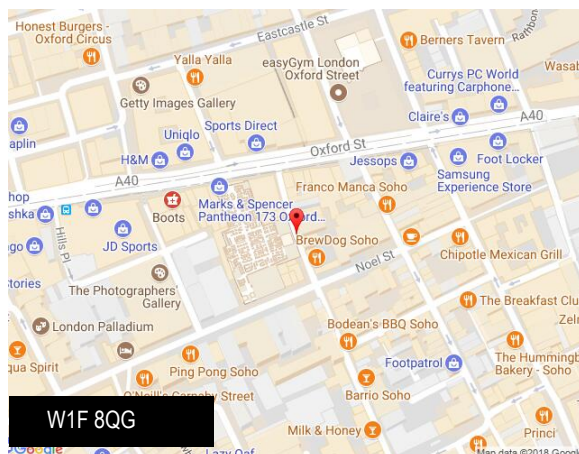
£75 per sq ft

Business Rates

Rates Payable: £18 per sq ft

Service Charge

£12 per sq ft



Viewing & Further Information

If you are interested and would like more information please get in touch.

Contacts

Alex Browning

t: +44 (0)20 3805 6935

e: alex.browning@eu.jll.com

Michael Oliver

t: +44 (0)207 852 4349

e: Michael.Oliver@eu.jll.com

Chris Valentine

t: +44 (0)207 087 5362

e: chris.valentine@eu.jll.com

Francis Acquah

t: +44 (0)207 399 5836

e: francis.acquah@eu.jll.com