

To Let

Office 6,651 - 46,430 sq ft

7 Savoy Court, London, Greater London, WC2R 0EX



Summary

- Rent from £52.50 psf / Total Occupancy Cost from c.£82.50 psf
- Type: Office
- Tenure: To Let
- Size: 6,651 - 46,430 sq ft
- Rent: from £52.50 per sq ft

Highlights

- Excellent communication links
- Manned reception
- Recently refurbished
- Exceptional local amenities
- Impressive entrance

Location

Savoy Court is one of Covent Garden's most desirable addresses. The building occupies a commanding and prominent position on the Strand, allowing its occupiers and their visitors to benefit from the vibrancy and diversity Covent Garden has to offer. The area offers an abundance of first class restaurants, bars, famous theatres, hotels and cafés, as well as a collection of the world's best known and most exclusive retailers.

Savoy Court benefits from excellent transport links, including Covent Garden (Piccadilly line), Charing Cross (Bakerloo line, Northern line and National Rail) and Temple (Circle and District lines) Underground stations, all of which are within walking distance. Connections and journey times for the area will further improve across London when Crossrail opens in 2018.

Availability

Floor / Unit	Size	Availability
8th	6,651 sq ft	Available
7th	7,443 sq ft	Available
6th	7,914 sq ft	Available
5th	8,002 sq ft	Available
4th	8,223 sq ft	Available
3rd	8,197 sq ft	Available

Viewings

Strictly by appointment by the joint sole agents

Amenities

- Air-Conditioning
- Suspended metal tiled ceilings
- Raised floors
- Lifts
- Male and female WCs
- Showers

Energy Performance Rating

This property has been graded as 99(D).

Rent

from £52.50 per sq ft

Business Rates

Rates Payable: £22.80 per sq ft

Service Charge

£9.91 per sq ft



Viewing & Further Information

If you are interested and would like more information please get in touch.

Contacts

Catherine Owen

t: +44 (0)207 399 5208

e: catherine.owen@eu.jll.com

Paul Grindal

t: +44 (0)203 805 6938

e: paul.grindal@eu.jll.com

Henry Pouncefort-Duncombe

t: +44 (0)203 763 7074

e: henry.pouncefort-duncombe@eu.jll.com

Chris Valentine

t: +44 (0)207 087 5362

e: chris.valentine@eu.jll.com

Joint Agents

Oli Dobson (Cushman & Wakefield (Curzon Street))

t: 020 3296 4268



jll.co.uk/property

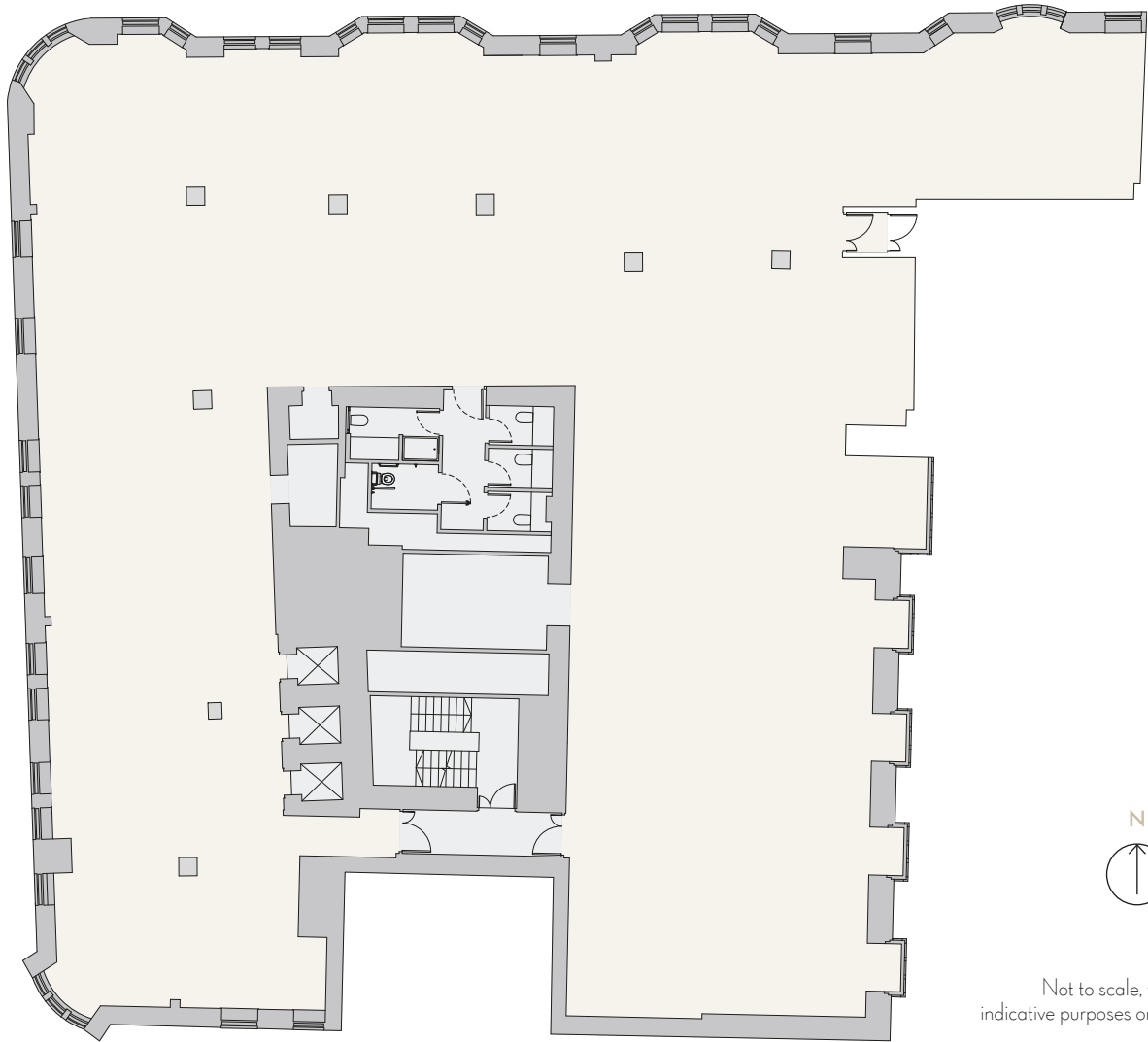
JLL for themselves and for the vendors or lessors of this property whose agents they are, give notice that:- a. the particulars are set out as a general outline only for guidance and do not constitute, nor constitute part of, an offer or contract; b. all descriptions, dimensions, references to condition and necessary permissions for use and occupation, and other details are believed to be correct, but any intending purchasers, tenants or third parties should not rely on them as statements or representations of fact but satisfy themselves that they are correct by inspection or otherwise; c. All properties are measured in accordance with the RICS property measurement, 1st Edition May 2015 (incorporating IPMS) unless designated NIA/GIA/GEA, in which case properties are measured in accordance with the RICS Code of Measuring Practice (6th Edition); d. Any images may be computer generated. Any photographs show only certain parts of the property as they appeared at the time they were taken.

© 2018 Jones Lang LaSalle IP, Inc. Date: 18/02/18 - 7-savoy-court_180218_4756.pdf

SAVOY 7 COURT

WC2

Strand



FOURTH FLOOR PLAN

8,223 SQ FT - 764 SQ M

IPMS areas available on request.