



## QUEEN'S HOUSE

---

ST VINCENT PLACE, GLASGOW G1 2DT

High quality City Centre  
office accommodation  
with car parking

Newly refurbished suites  
available from  
93 – 186 Sq M  
(1,000 – 2,000 Sq Ft)

Suitable for SMEs, startups  
and corporate occupiers

ENTER



QUEEN'S HOUSE IS A LANDMARK BUILDING LOCATED IN THE HEART OF GLASGOW CITY CENTRE.

Arranged over basement, ground and six upper floors, the property provides a variety of high quality refurbished office suites within one of Glasgow's most architecturally impressive buildings.

Queen's House benefits from an eclectic tenant mix ranging from established stock exchange listed companies to dynamic startups.

There are also a number of designated car parking spaces available with each suite.

DESCRIPTION

SPECIFICATION

AVAILABILITY



GALLERY

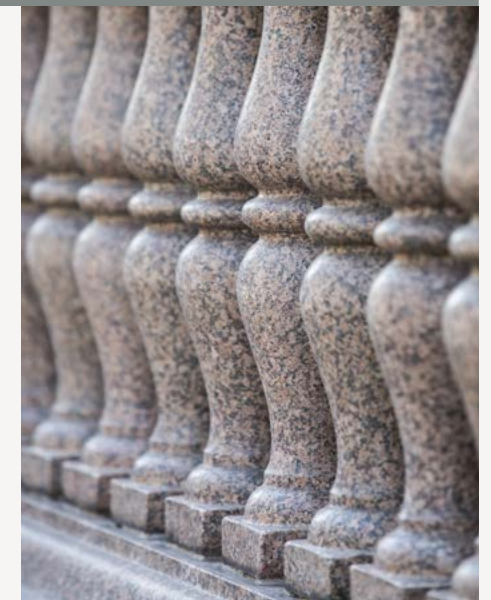
LOCATION

CONTACT



Each suite provides a high specification open plan layout. Additionally, some suites can be tailored to suit occupier requirements.

- / LG7 type light fittings
- / Suspended ceilings and exposed double height plaster ceilings
- / Tea preparation points
- / Perimeter gas fired central heating
- / Secure basement car parking
- / Dedicated shower facility
- / Cycle racks
- / Fibre-optic infrastructure
- / EPC Rating – D+



QUEEN'S HOUSE  
ST VINCENT PLACE  
GLASGOW G1 2DT

DESCRIPTION

SPECIFICATION

AVAILABILITY



GALLERY

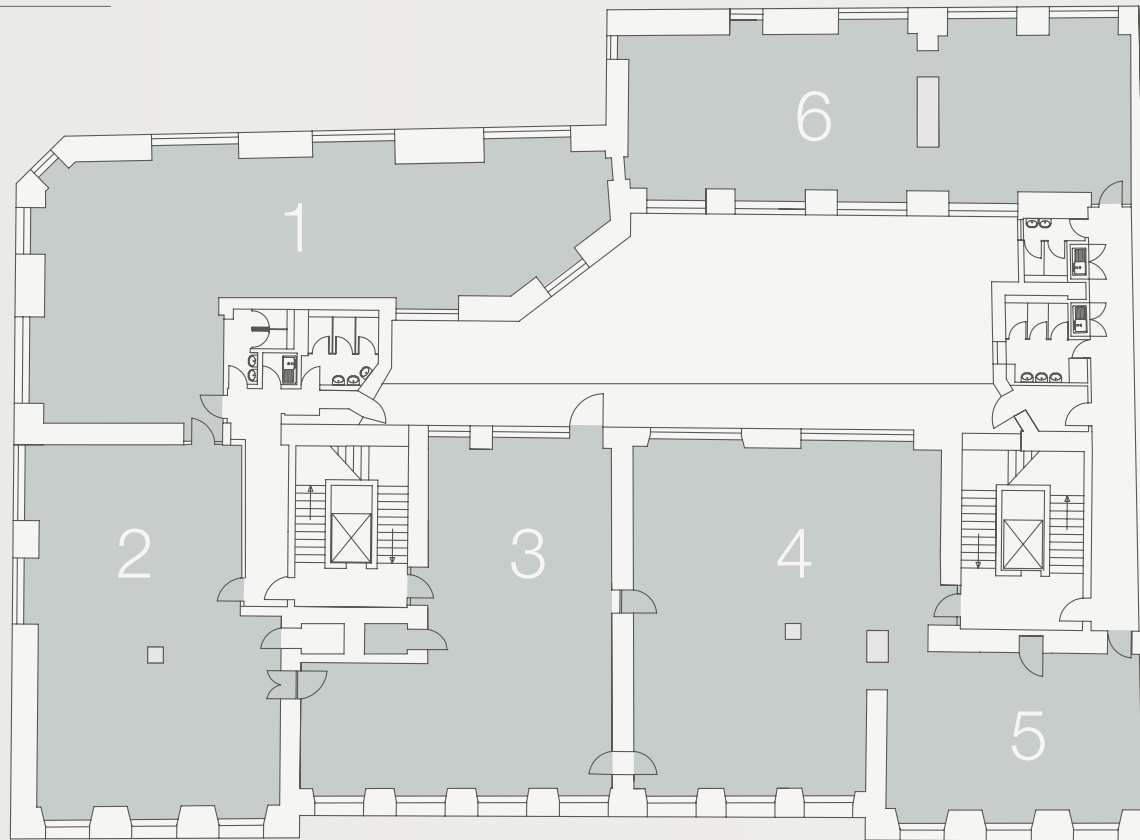
LOCATION

CONTACT

## TYPICAL FLOOR PLATE

Please click on website for further details and plans.

[WWW.QUEENSHOUSEGLASGOW.CO.UK](http://WWW.QUEENSHOUSEGLASGOW.CO.UK)



INDICATIVE FLOOR PLAN.  
NOT TO SCALE.

QUEEN'S HOUSE  
ST VINCENT PLACE  
GLASGOW G1 2DT

DESCRIPTION

SPECIFICATION

AVAILABILITY



GALLERY

LOCATION

CONTACT



QUEEN'S HOUSE  
ST VINCENT PLACE  
GLASGOW G1 2DT

DESCRIPTION

SPECIFICATION

AVAILABILITY



GALLERY

LOCATION

CONTACT



QUEEN'S HOUSE  
ST VINCENT PLACE  
GLASGOW G1 2DT

DESCRIPTION

SPECIFICATION

AVAILABILITY



GALLERY

LOCATION

CONTACT



QUEEN'S HOUSE  
ST VINCENT PLACE  
GLASGOW G1 2DT

DESCRIPTION

SPECIFICATION

AVAILABILITY



GALLERY

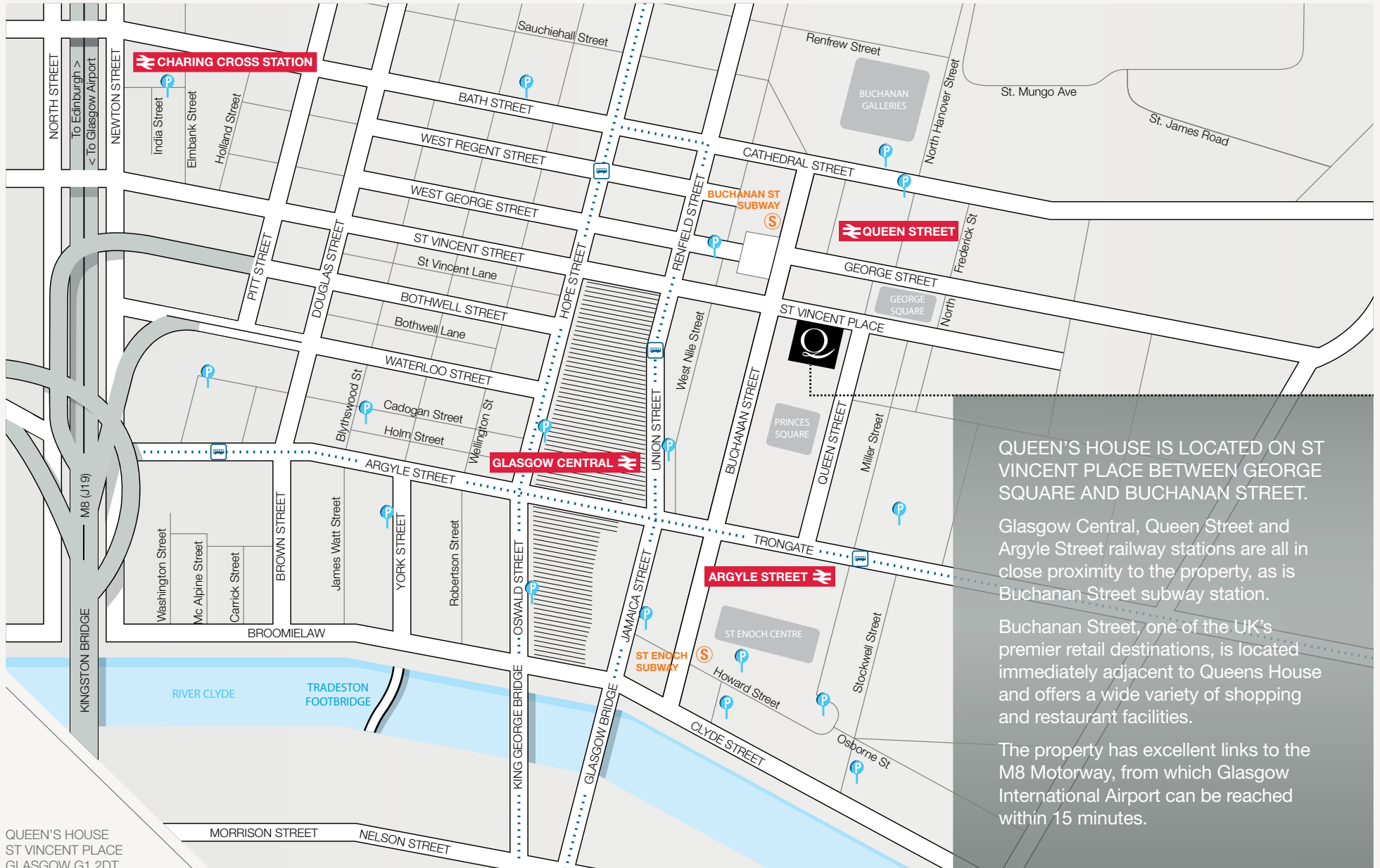
LOCATION

CONTACT



QUEEN'S HOUSE  
ST VINCENT PLACE  
GLASGOW G1 2DT





QUEEN'S HOUSE IS LOCATED ON ST VINCENT PLACE BETWEEN GEORGE SQUARE AND BUCHANAN STREET.

Glasgow Central, Queen Street and Argyle Street railway stations are all in close proximity to the property, as is Buchanan Street subway station.

Buchanan Street, one of the UK's premier retail destinations, is located immediately adjacent to Queens House and offers a wide variety of shopping and restaurant facilities.

The property has excellent links to the M8 Motorway, from which Glasgow International Airport can be reached within 15 minutes.

QUEEN'S HOUSE  
ST VINCENT PLACE  
GLASGOW G1 2DT

DESCRIPTION



SPECIFICATION



AVAILABILITY



GALLERY



LOCATION



CONTACT

#### TERMS

Available upon request

#### VIEWING

By prior appointment  
via joint agents:

**Ryden**.co.uk  
0141 204 3838

 **JLL**  
0141 248 6040  
jll.co.uk/property


TIM JACOBSEN  
0141 270 3170  
tim.jacobsen@ryden.co.uk

COLIN MCGHEE  
0141 567 6650  
colin.mcghee@eu.jll.com

[WWW.QUEENSHOUSEGLASGOW.CO.UK](http://WWW.QUEENSHOUSEGLASGOW.CO.UK)

On behalf of  
 **PICTON**  
WWW.PICTONPROPERTY.CO.UK

Misrepresentation Act: The particulars contained in this brochure are believed to be correct, but cannot be guaranteed. All liability, any negligence or otherwise any loss arising from the use of these particulars is hereby excluded. October 2014

 020 3117 0830 | [creativeworkslondon.com](http://creativeworkslondon.com)

