

CANNON GREEN

NEW STYLE IN THE SQUARE MILE



A 115,000 SQ FT MIXED-USE
SCHEME ONE MINUTE FROM
CANNON STREET STATION.
CANNONGREEN.CO.UK

OFFICES: 2,800 SQ FT- 60,000 SQ FT
GYM: 20,000 SQ FT LET TO GYMBOX
RESTAURANT: 7,000 SQ FT LET TO DRAKE & MORGAN





THE BUILDING

**60,000 SQ FT OF OFFICES
REMAINING. FLOOR PLATES
FROM 2,800 SQ FT TO
9,289 SQ FT AVAILABLE**

Cannon Green is a new workplace concept in the heart of the square mile offering approximately 82,000 sq ft of modern office space along with a new concept Drake & Morgan bar & restaurant 'The Listing', business lounge and Gymbox gym all under the same roof. Cannon Green also boasts two large terraces on the 7th & 8th floors of the City Wing both of which are directly accessible from office spaces. The 7th floor terrace is east facing, whilst the 1,755 sq ft terrace on the 8th floor has great views across the City and beyond.

The building is undergoing an extensive internal and external refurbishment. The cladding has been upgraded and reglazed to create a superb bronze façade and a newly remodelled striking reception podium.

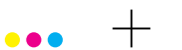
Internally, the offices have floor to ceiling windows boasting natural daylight and raw finishes such as exposed concrete walls mixed with city-slick washrooms, lighting and kitchenettes hidden behind industrial sliding doors.

The building is designed to support occupancy levels of one person per 8 sq m, delivering financial performance and lower running costs.



CGI

CGI



NEW CONCEPT DRAKE & MORGAN RESTAURANT & BAR

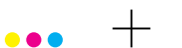
The Listing, a new concept Drake & Morgan bar & restaurant will be located adjacent to the new Cannon Green entrance in a striking glazed double-height podium. The new restaurant & bar, from the people behind The Refinery in Bankside and The Anthologist in Gresham Street, EC2 will also have a large terrace for outdoor dining.

(drakeandmorgan.co.uk)



Indicative Images

Indicative Images



GYMBOX FITNESS FACILITIES

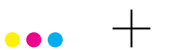
Hip boutique chain Gymbox, which has taken the fitness world by storm, will open a new club at Cannon Green. Combining stunning contemporary interiors with its unique take on fitness, Gymbox is the must-place to hang out for fitness savvy Londoners. Gymbox has redefined the way people experience fitness. Each of the gyms' interior is individually designed to ensure every club looks and feels completely unique. Once you've got used to the mesmerising designs the extraordinary classes and nightly resident DJs will keep you coming back on a regular basis. Lactic Jungle, Loaded Yoga and Bartendaz are just a few of the classes out of hundreds every week.

(gymbox.com)



Indicative Images

Indicative Images



THE BUSINESS LOUNGE

Drawing its inspiration from London's private members' clubs, the first floor business lounge has its own café and is certain to become a hub within the building for informal meetings, networking and socialising.



BIKE CLUB

There will be ample cycle parking set over two floors with its own entrance and routes within the building plus changing facilities, showers & lockers.



Artist Impressions

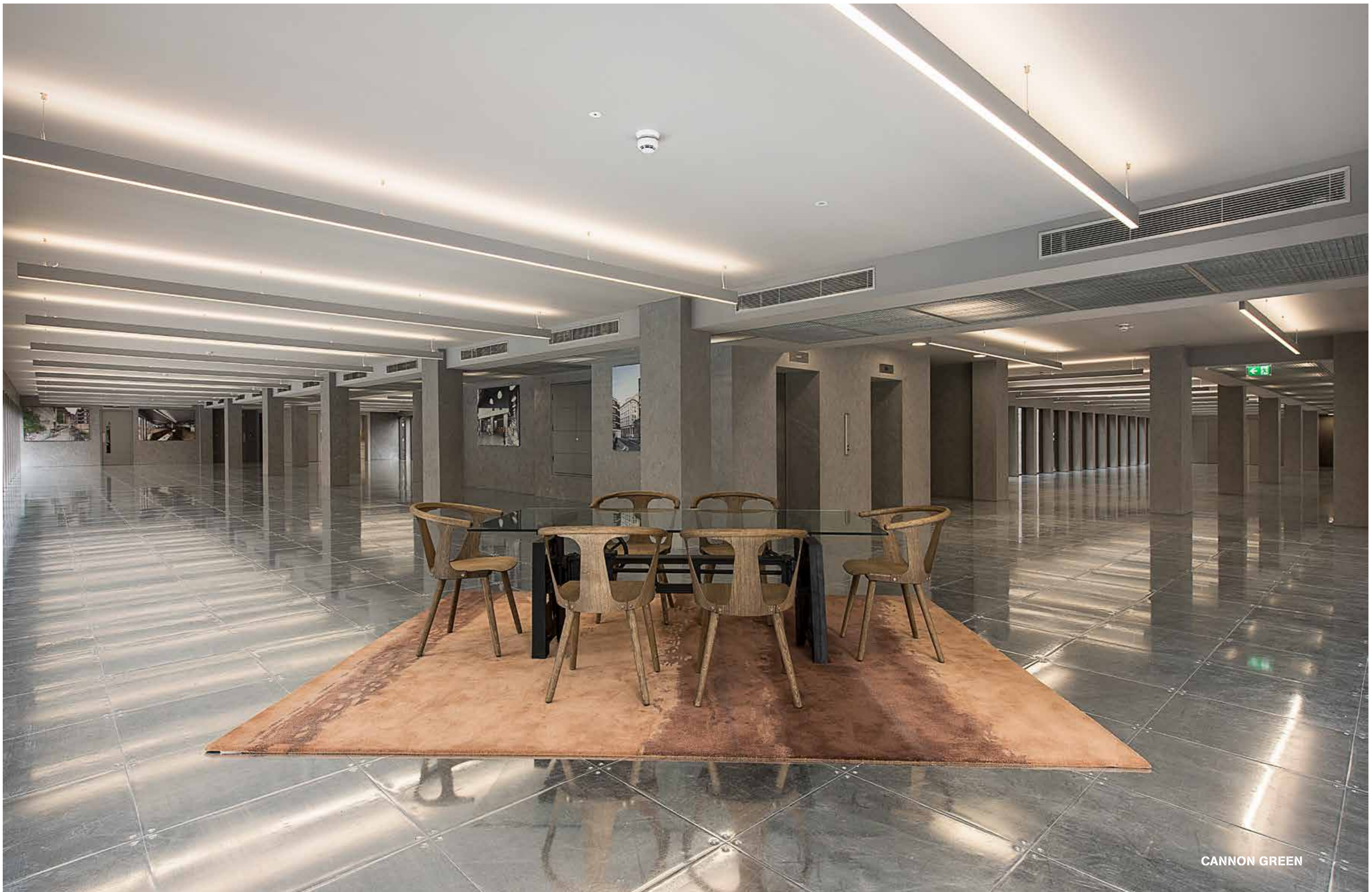
Indicative Images



THE SPACE

- 1:8 base occupancy (persons / sq m)
- DX VRF fan coil air conditioning
- 2 x 13 and 2 x 10 person passenger lifts
- Dual aspect floors with floor to ceiling windows
- Designated private kitchenette on each office floor
- LED light fittings to LG7
- EPC target rating Grade A
- BREEAM target rating of Very Good
- Landlord's standby generator capacity available
- Tenants' server room





CANNON GREEN



SCHEDULE OF AREAS

CANNON GREEN



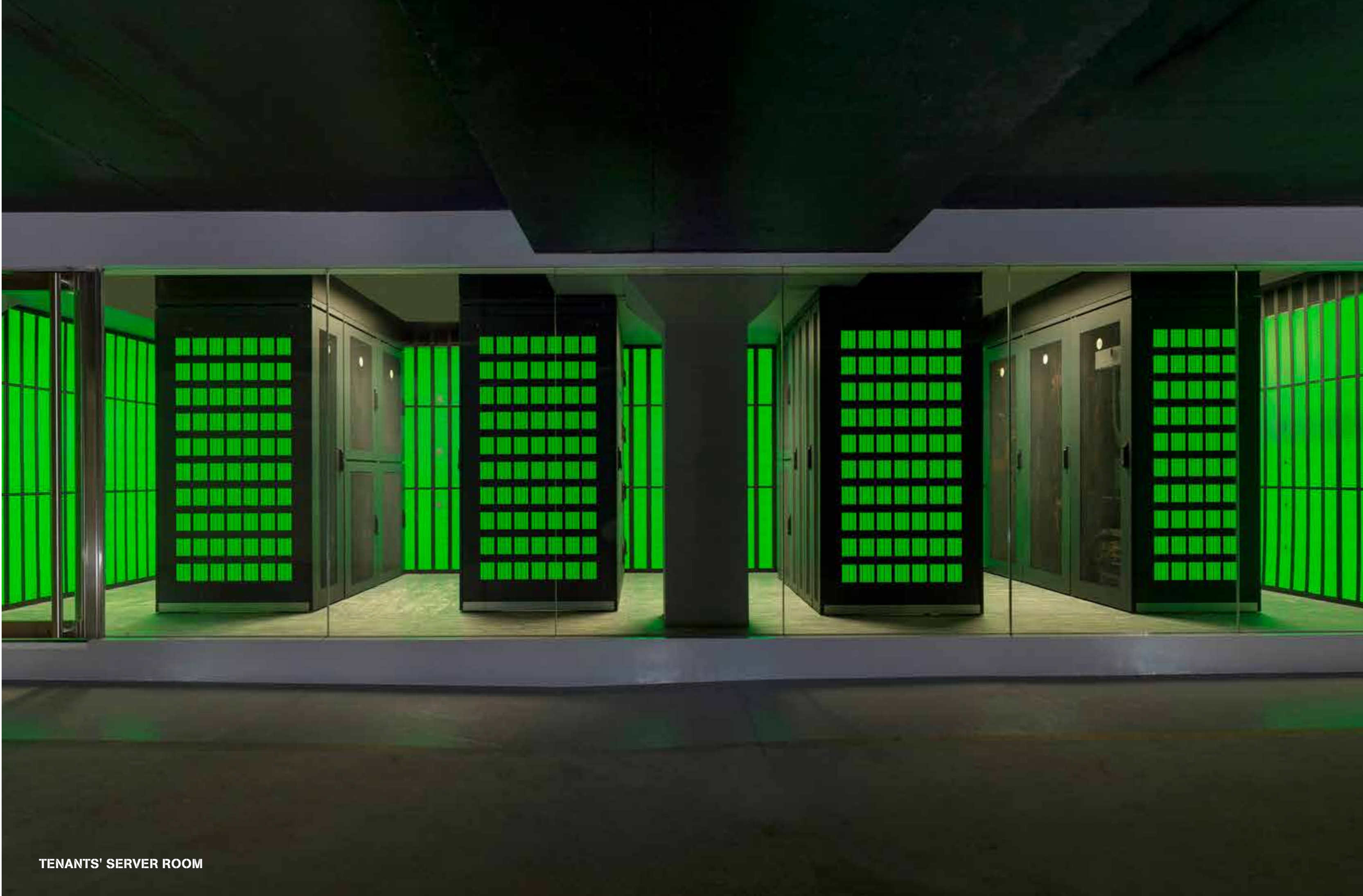
	TOTAL AREA : ft ²	SPACE AVAILABLE
LEISURE & BUILDING FACILITIES		
Bike Club, Changing & Showers	1,582	-
Bike Repair Shop	275	-
Gymbox	20,311	-
Drake & Morgan	6,717	-
Business Lounge	4,682	4,682
OFFICES		
Podium	4,693	-
1st Floor	6,308	-
2nd Floor River	6,489	-
2nd Floor City	2,800	2,800
3rd Floor	9,289	9,289
4th Floor	9,289	9,289
5th Floor River	6,489	-
5th Floor City	2,800	2,800
6th Floor River	4,090	-
6th Floor City	5,199	5,199
7th Floor River	6,598	Terrace 721 ft ² 6,598
8th Floor	4,682	4,682
9th Floor	4,682	4,682
10th Floor	4,682	4,682
11th Floor	3,724	3,724

LET
LET
LET

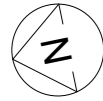
LET
LET

LET
LET

LET



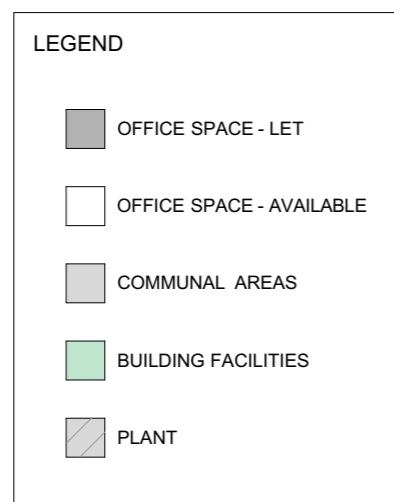
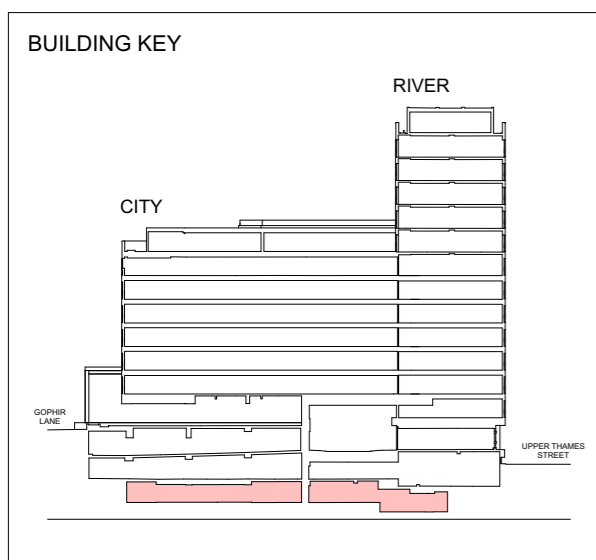
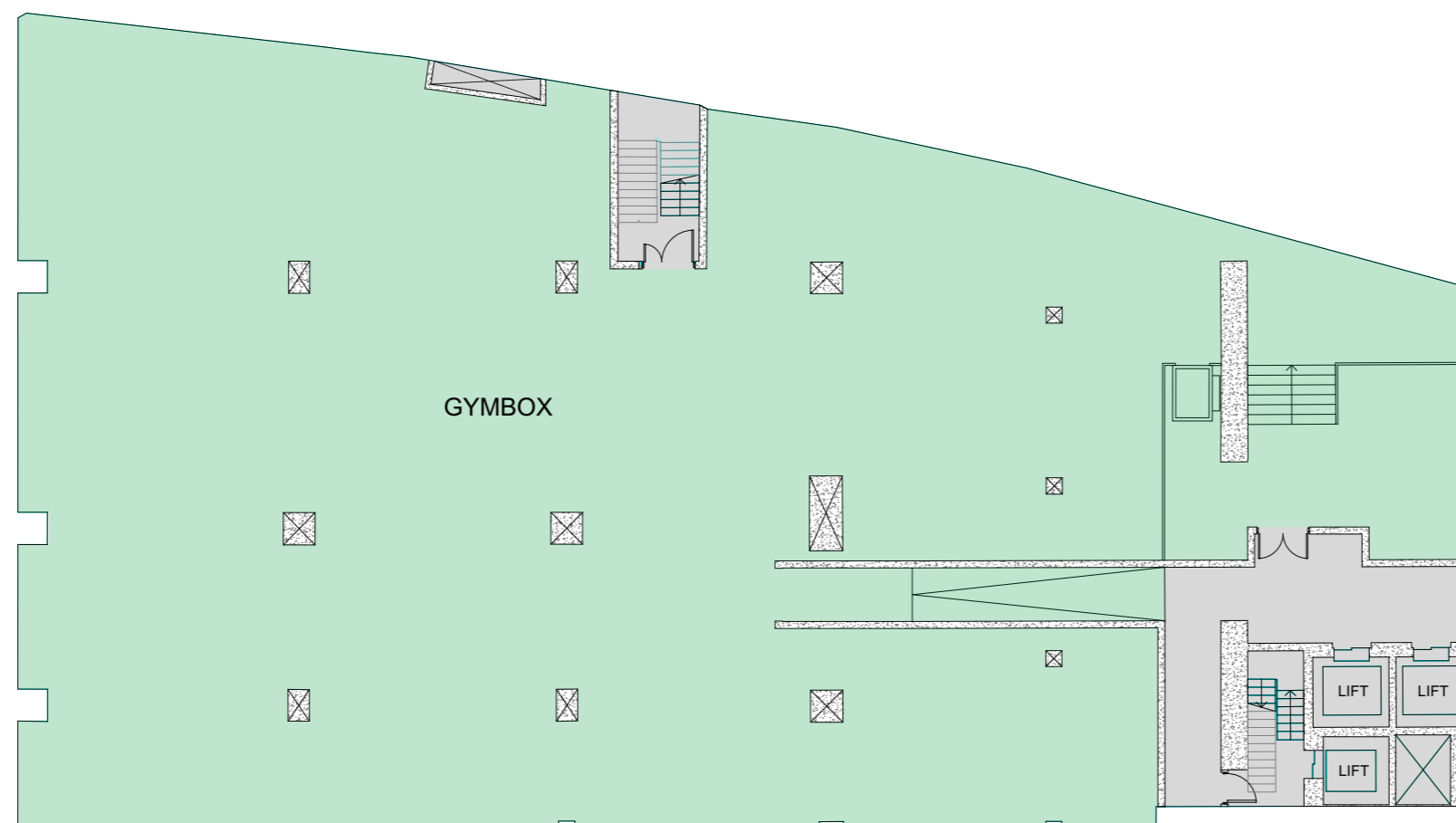
TENANTS' SERVER ROOM

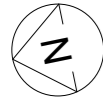


Notes:
Do not Scale from this drawing Use figured dimensions only

FLOOR PLAN: BASEMENT 2

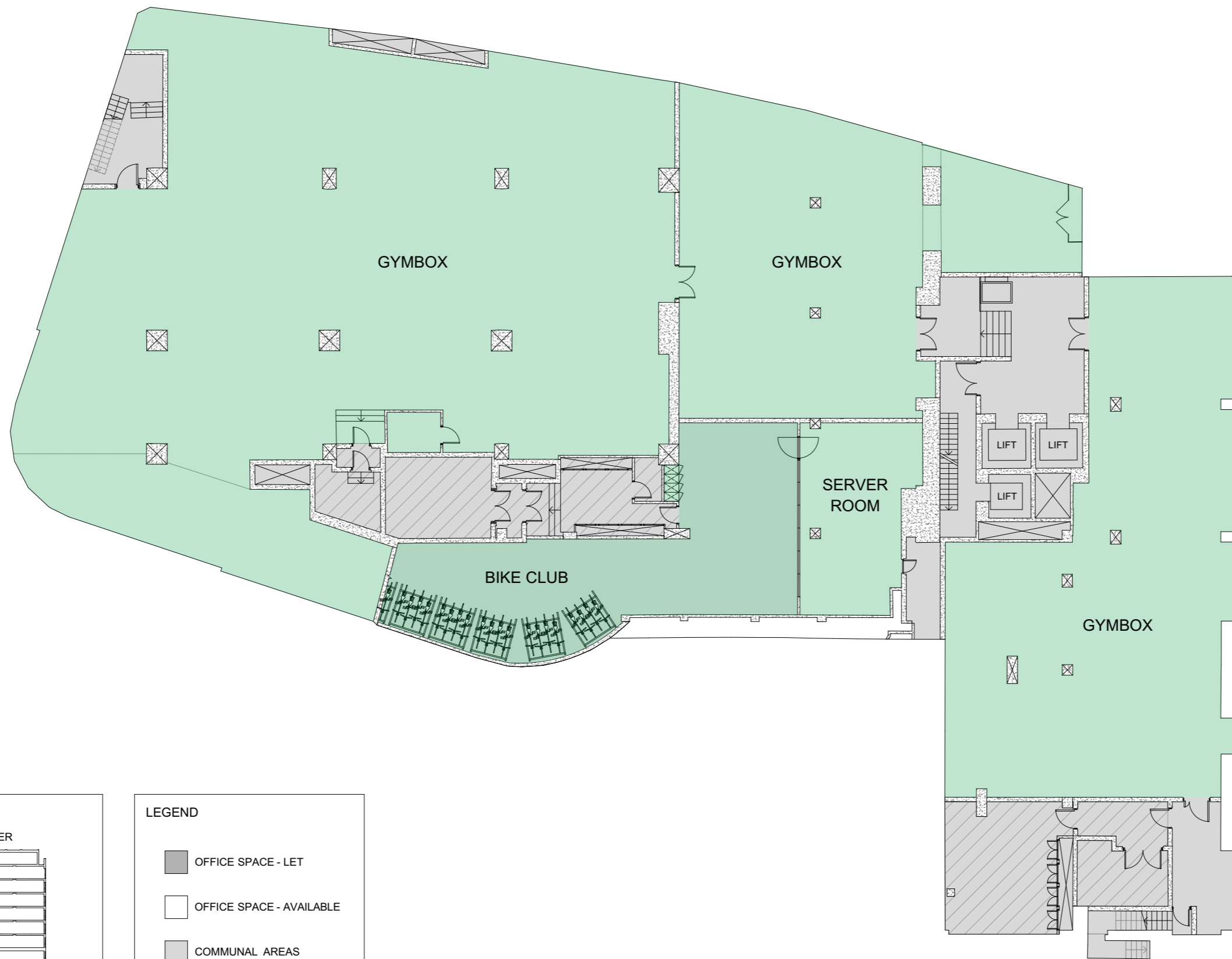
UPPER THAMES STREET



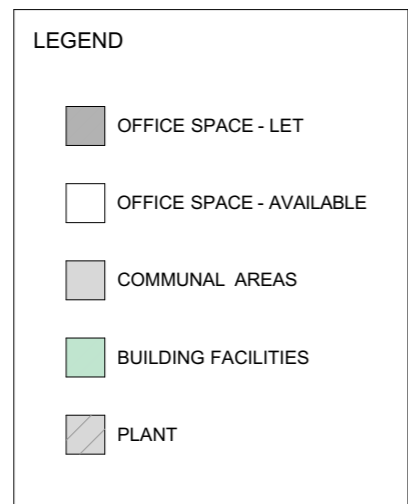
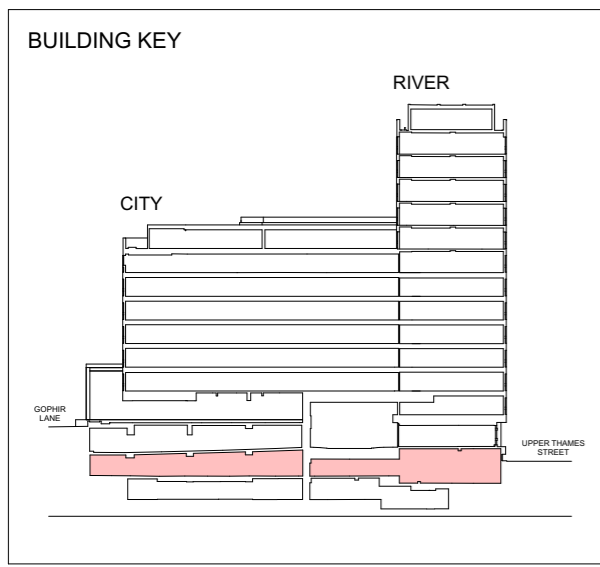


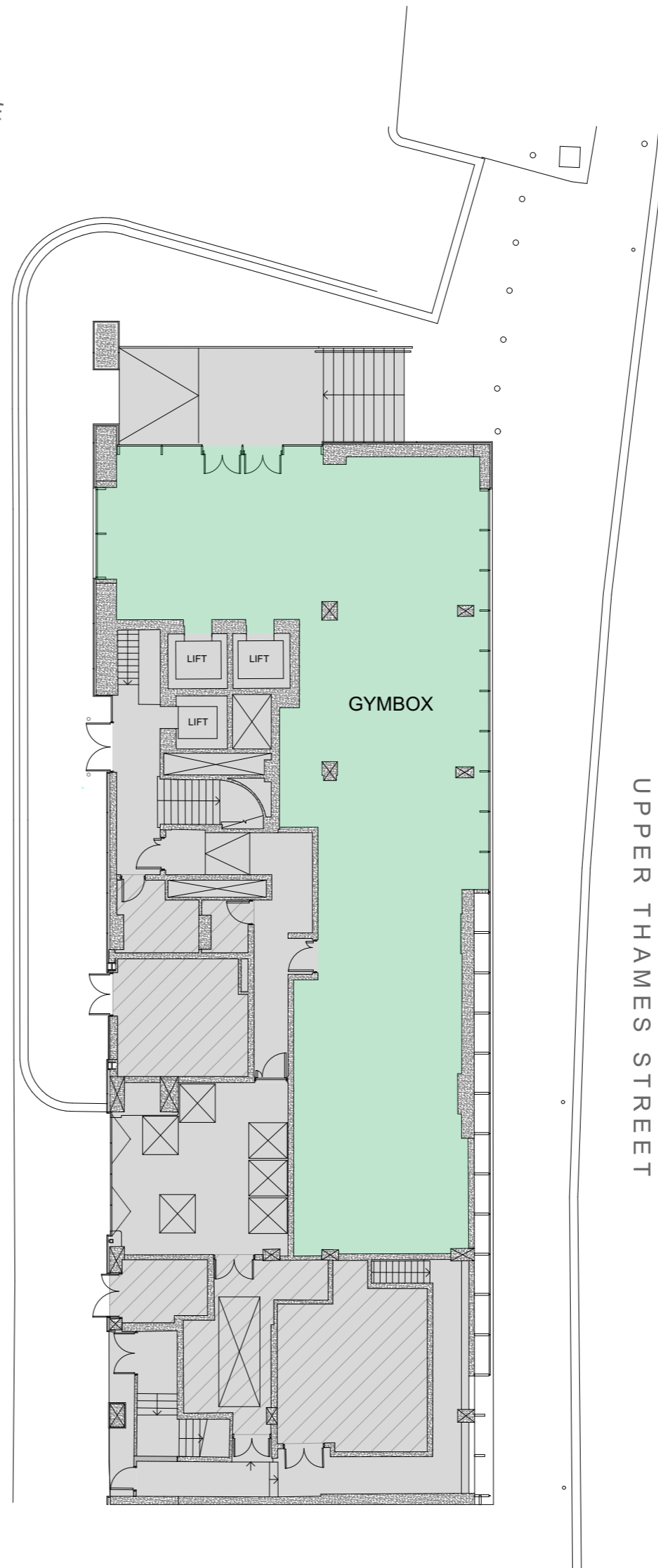
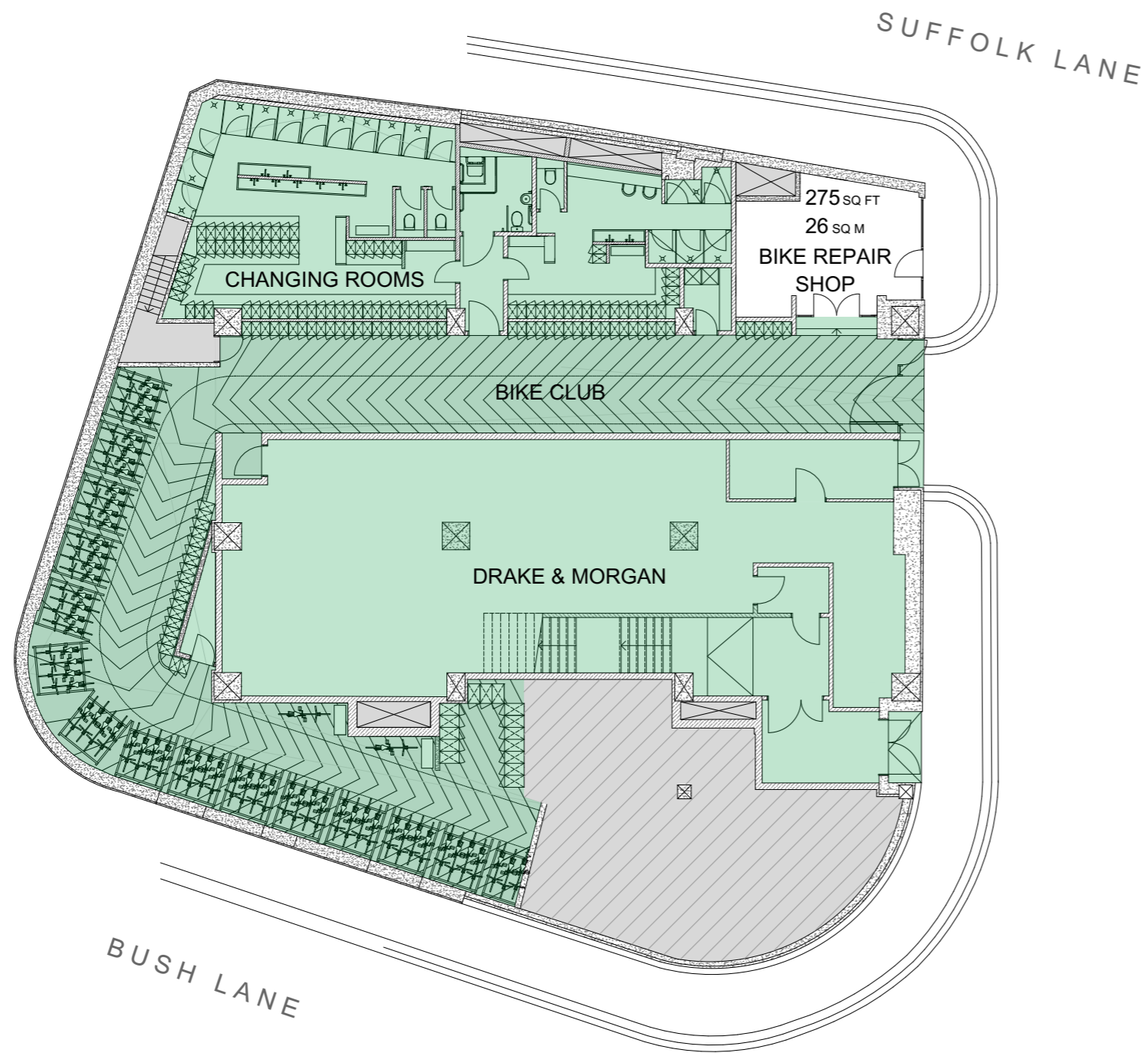
Notes:
Do not Scale from this drawing Use figured dimensions only

FLOOR PLAN: BASEMENT 1



UPPER THAMES STREET

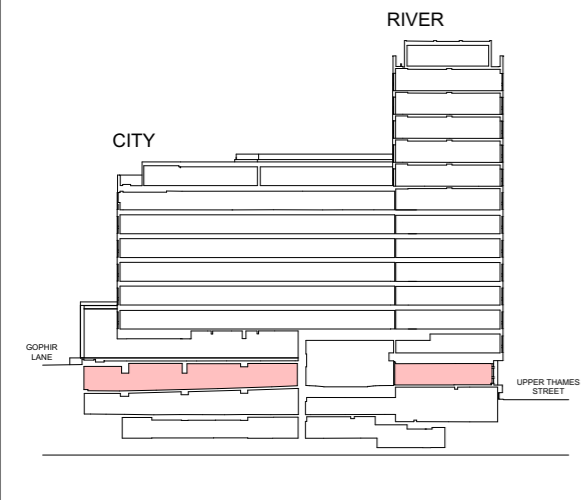




Notes:
Do not Scale from this drawing Use figured dimensions only

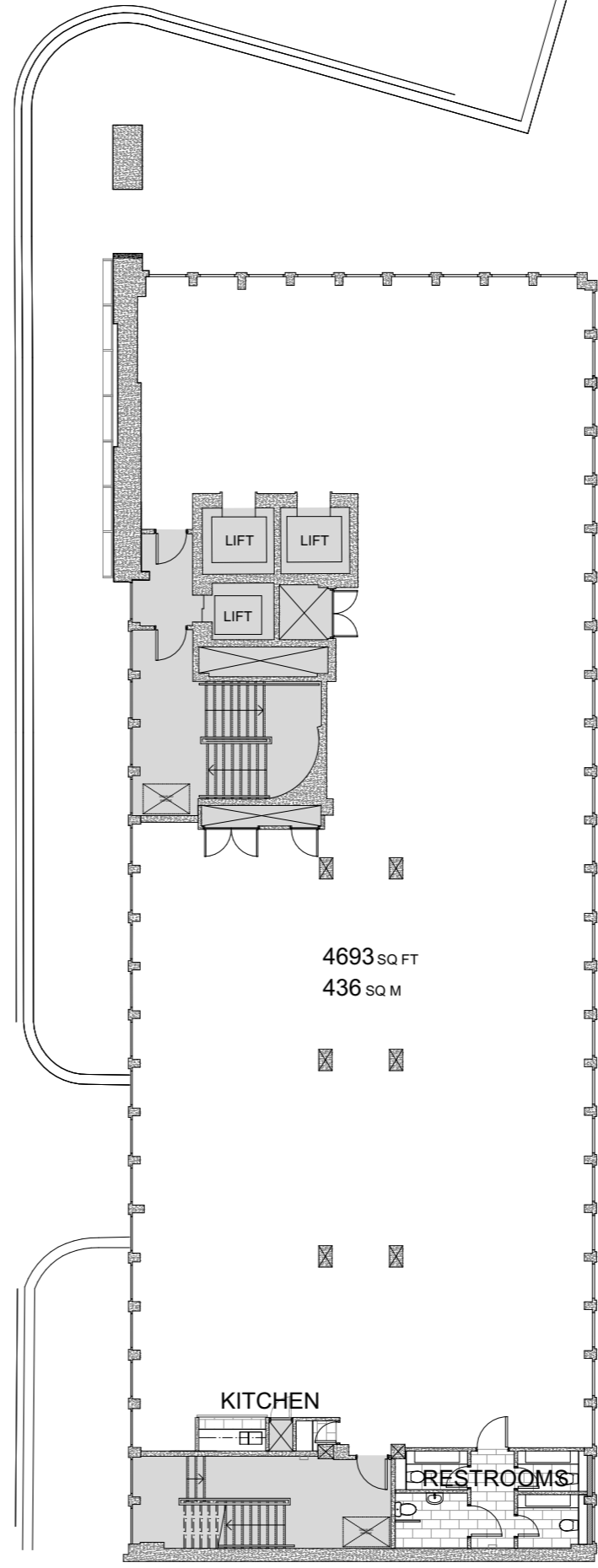
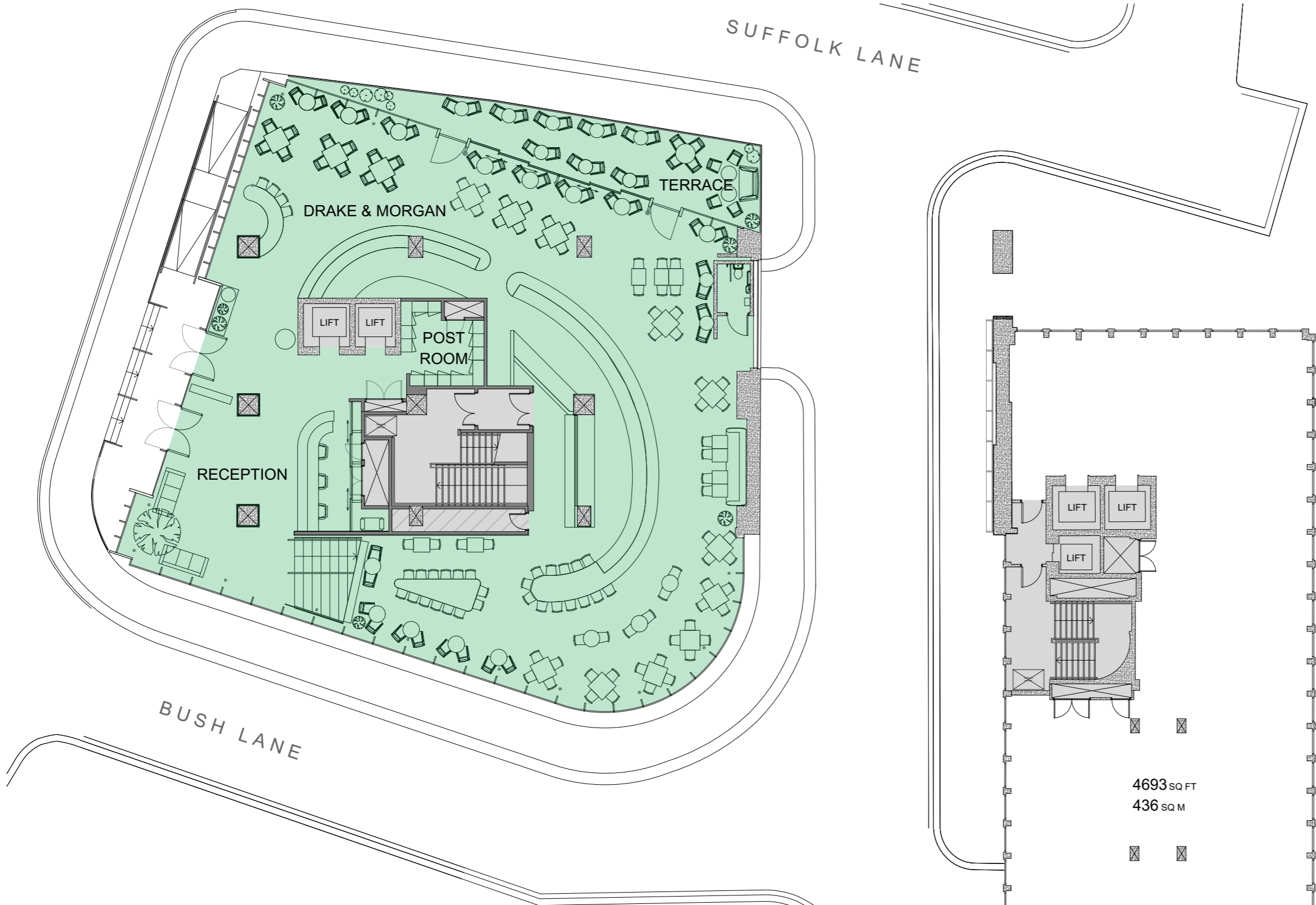
FLOOR PLAN: LOWER GROUND

BUILDING KEY

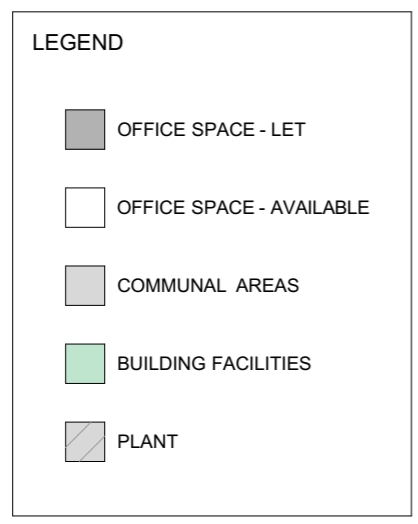
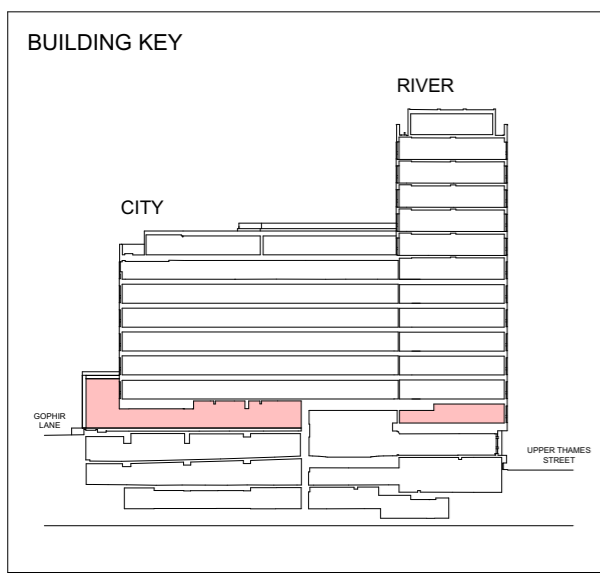


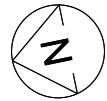
LEGEND

- OFFICE SPACE - LET
- OFFICE SPACE - AVAILABLE
- COMMUNAL AREAS
- BUILDING FACILITIES
- PLANT



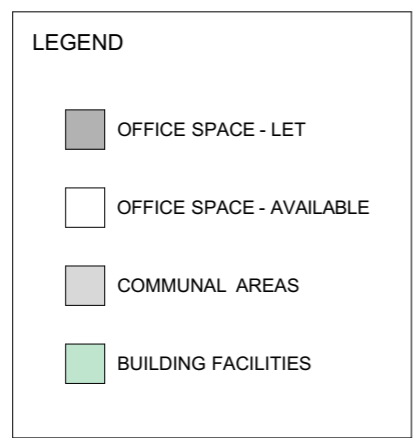
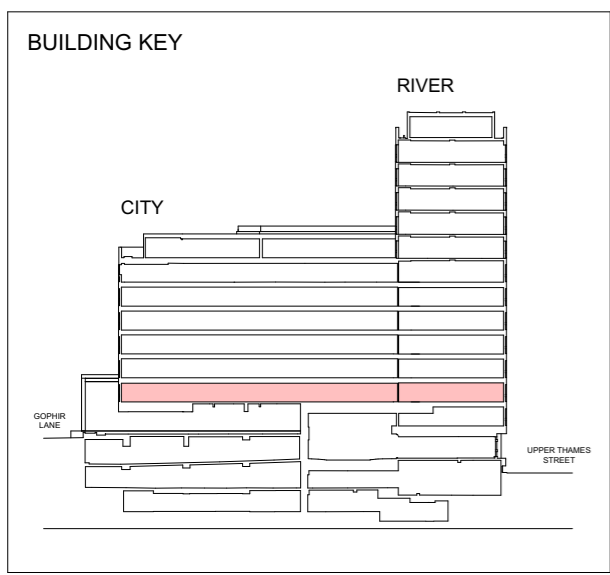
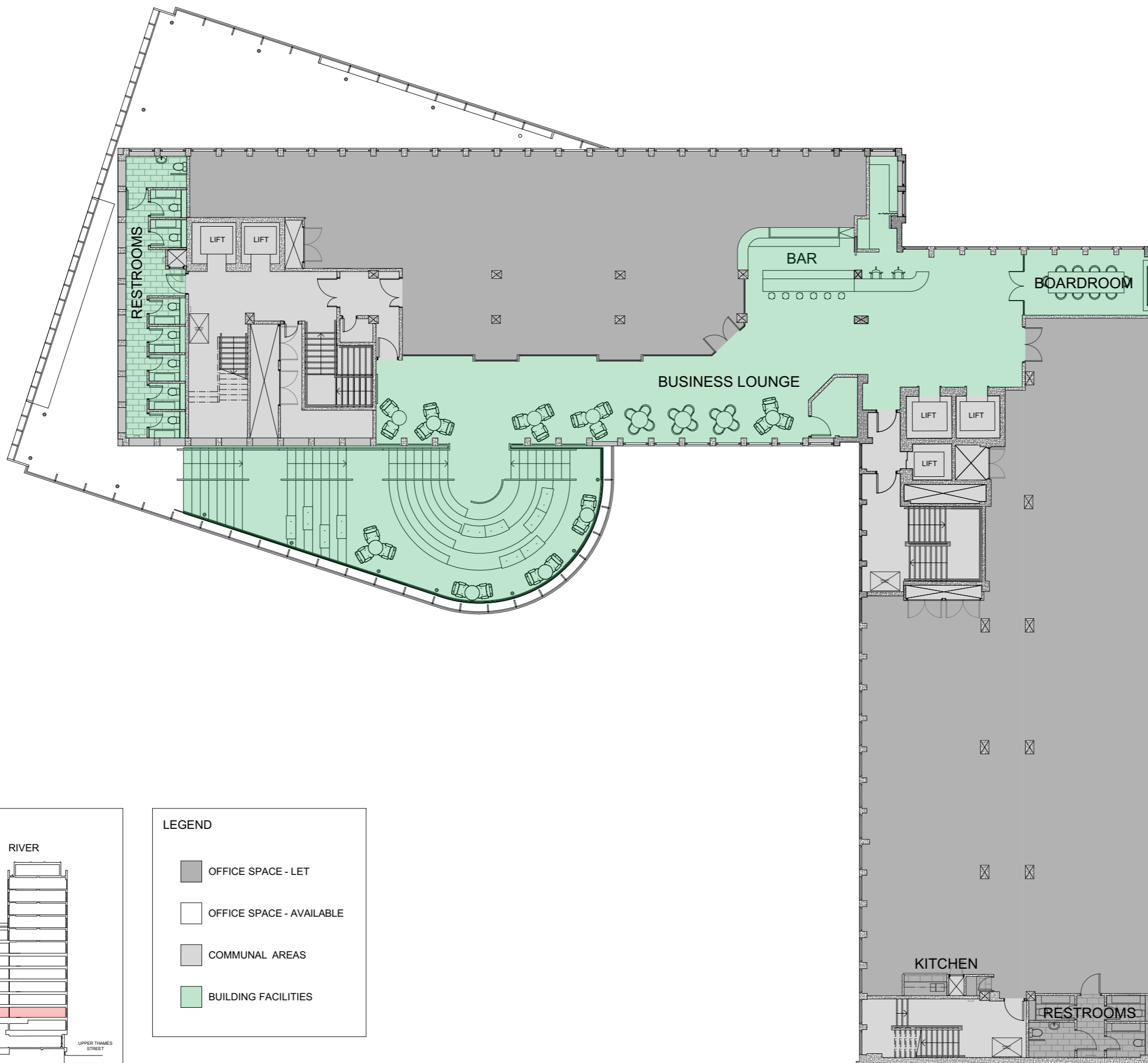
FLOOR PLAN: PODIUM





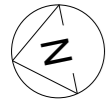
Notes:
Do not Scale from this drawing Use figured dimensions only

FLOOR PLAN: FIRST



UPPER THAMES STREET



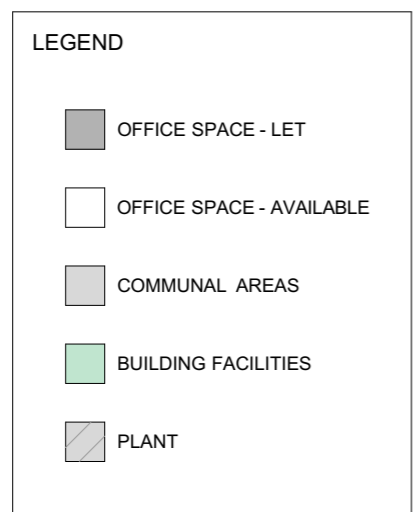
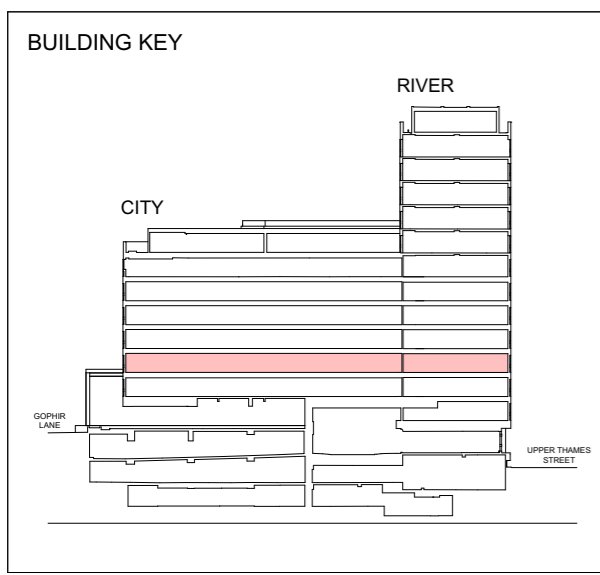


Notes:
Do not Scale from this drawing Use figured dimensions only

FLOOR PLAN: SECOND



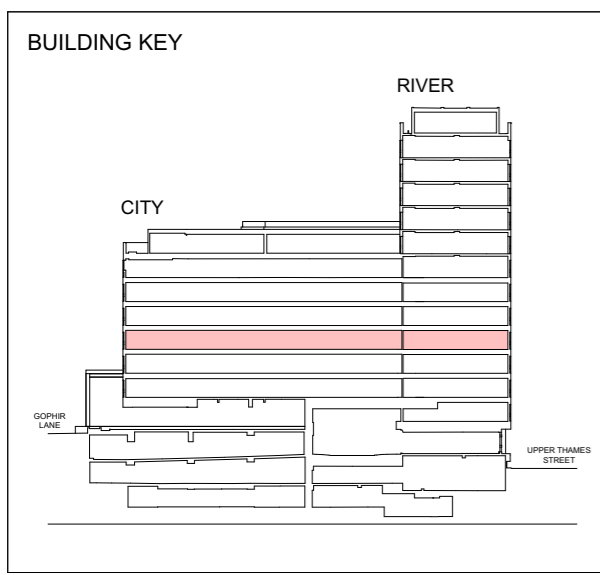
UPPER THAMES STREET





Notes:
Do not Scale from this drawing Use figured dimensions only

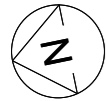
FLOOR PLAN: THIRD



LEGEND

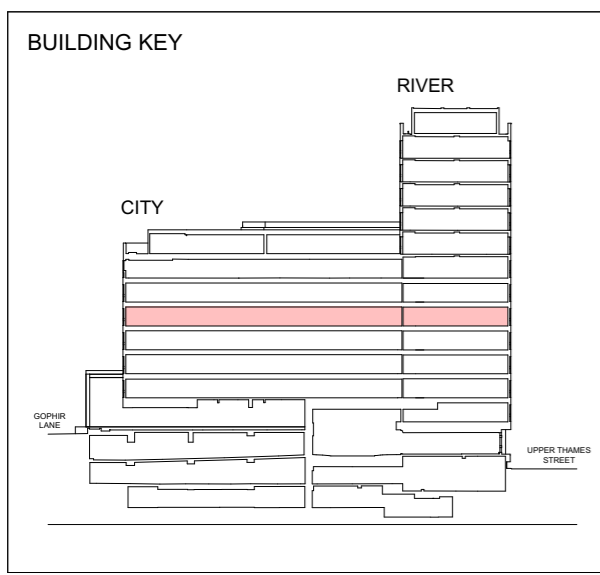
- OFFICE SPACE - LET
- OFFICE SPACE - AVAILABLE
- COMMUNAL AREAS
- BUILDING FACILITIES
- PLANT





Notes:
Do not Scale from this drawing Use figured dimensions only

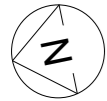
FLOOR PLAN: FOURTH



LEGEND

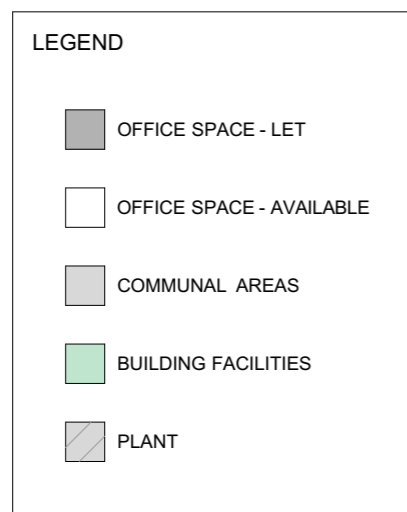
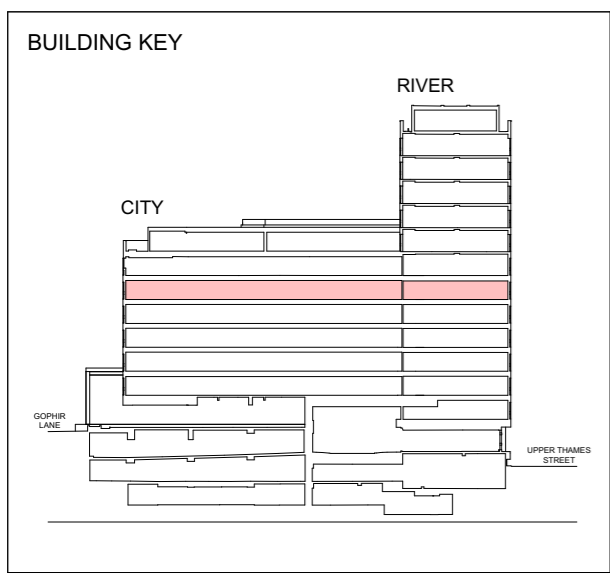
	OFFICE SPACE - LET
	OFFICE SPACE - AVAILABLE
	COMMUNAL AREAS
	BUILDING FACILITIES
	PLANT





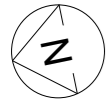
Notes:
Do not Scale from this drawing Use figured dimensions only

FLOOR PLAN: FIFTH



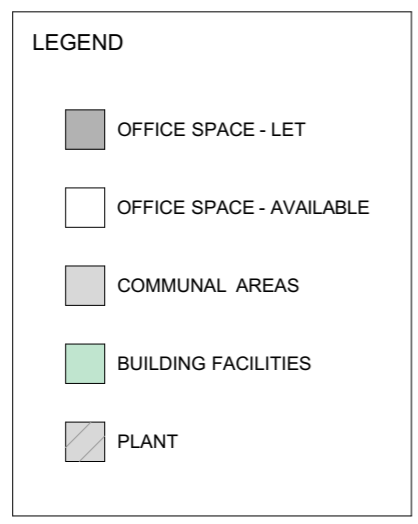
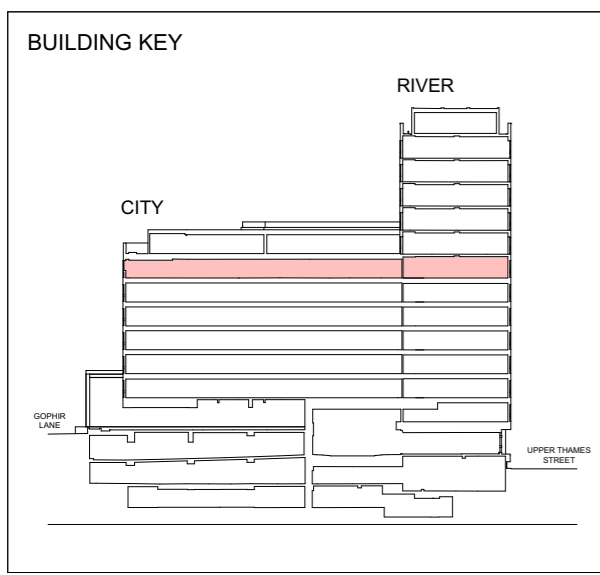
UPPER THAMES STREET





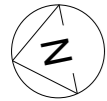
Notes:
Do not Scale from this drawing Use figured dimensions only

FLOOR PLAN: SIXTH



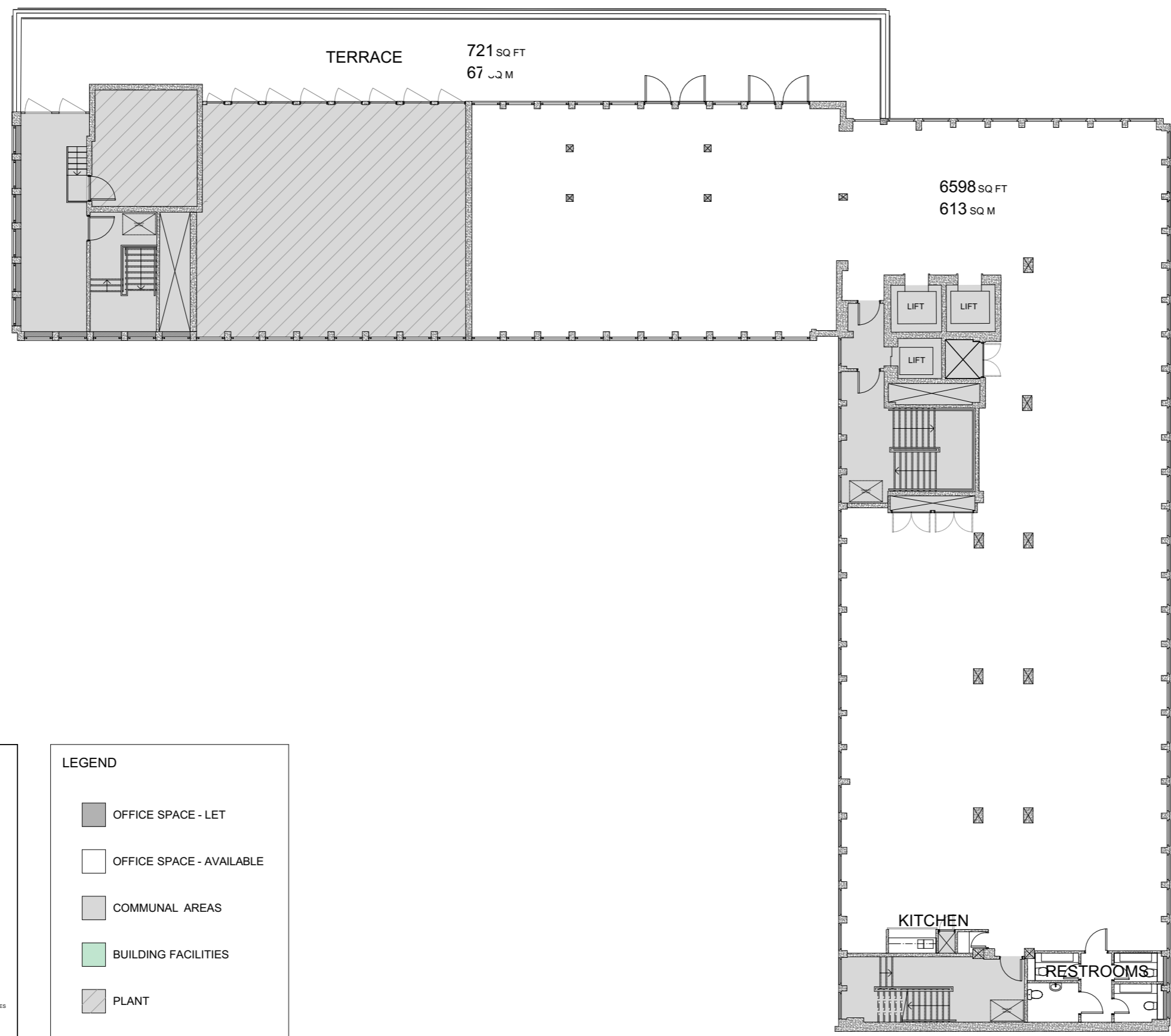
UPPER THAMES STREET



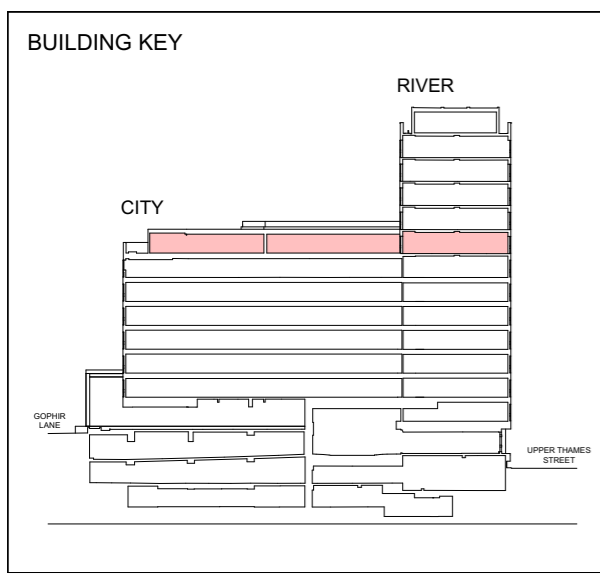


Notes:
Do not Scale from this drawing Use figured dimensions only

FLOOR PLAN: SEVENTH



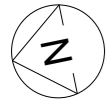
UPPER THAMES STREET



LEGEND

	OFFICE SPACE - LET
	OFFICE SPACE - AVAILABLE
	COMMUNAL AREAS
	BUILDING FACILITIES
	PLANT



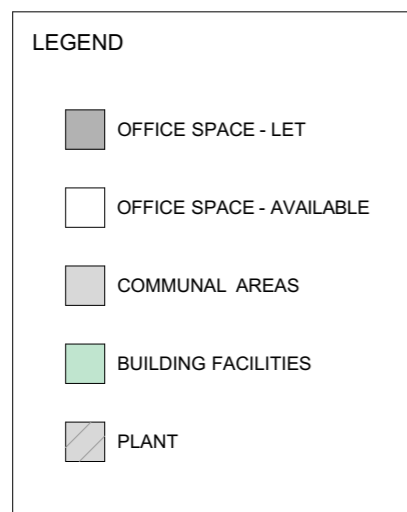
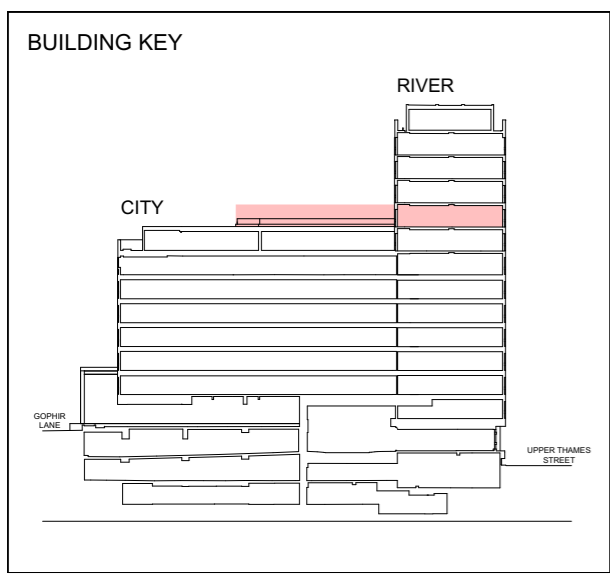


Notes:
Do not Scale from this drawing Use figured dimensions only

FLOOR PLAN: EIGHTH

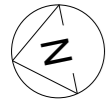


UPPER THAMES STREET





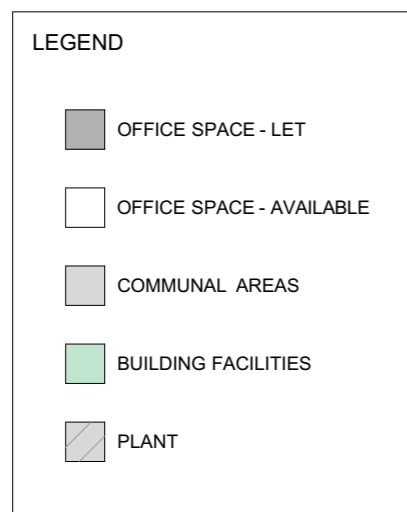
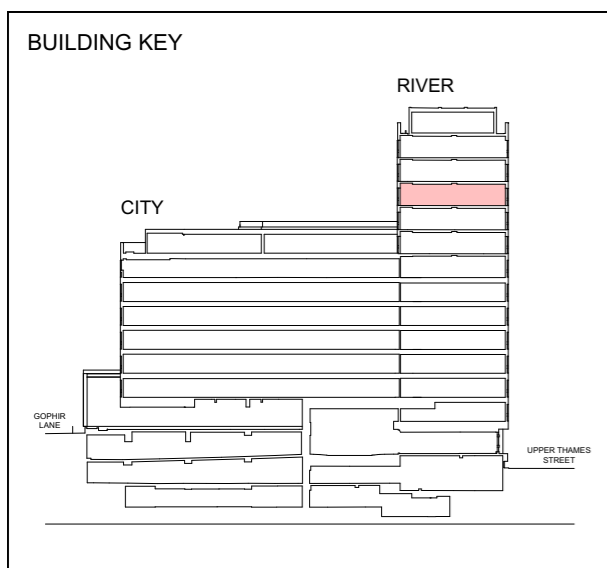
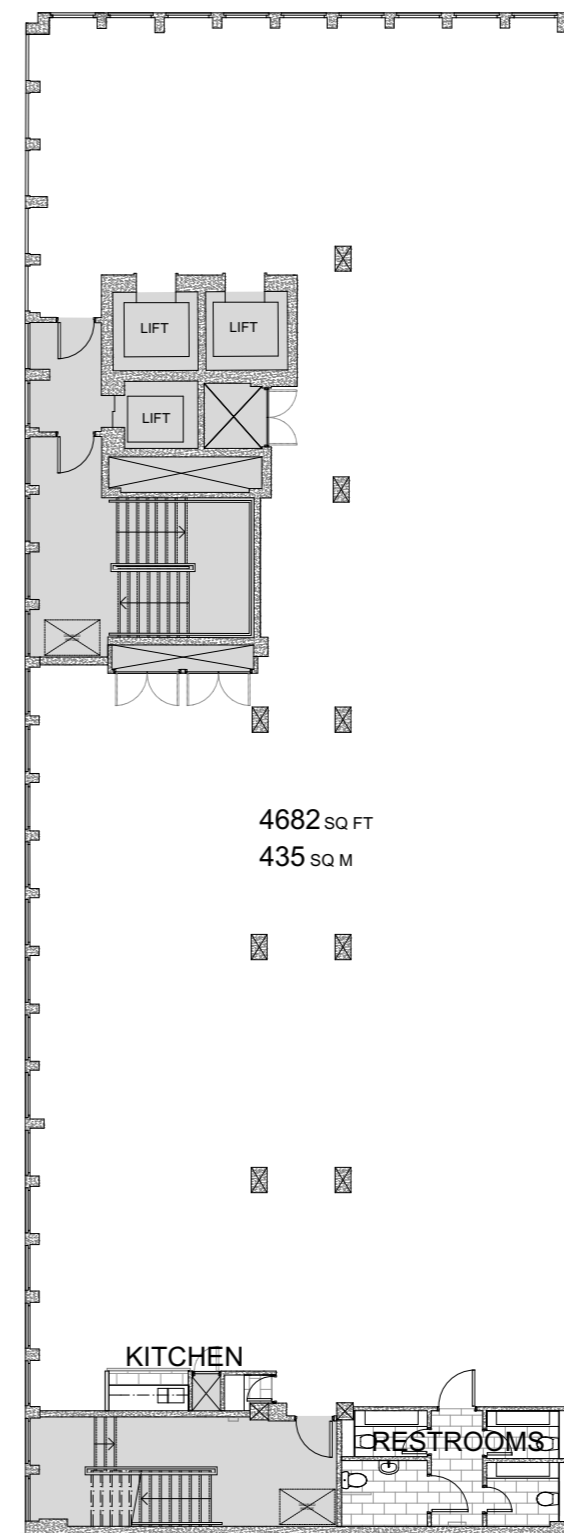
EIGHTH FLOOR TERRACE (CGI)



Notes:
Do not Scale from this drawing Use figured dimensions only

FLOOR PLAN: NINTH

UPPER THAMES STREET

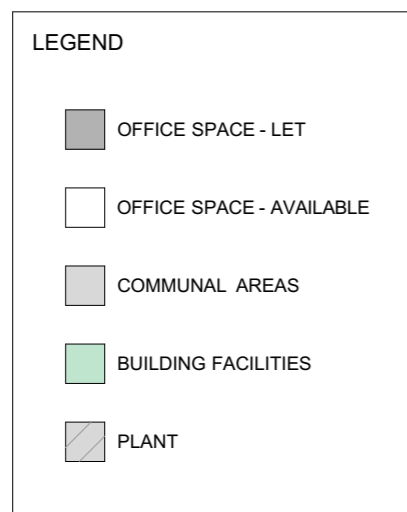
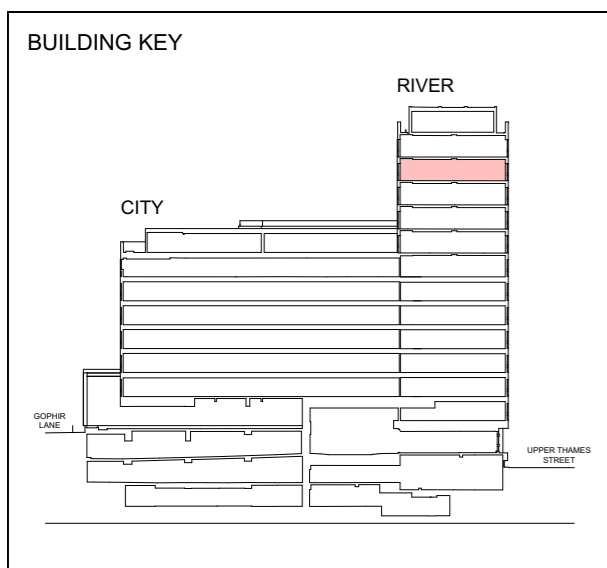
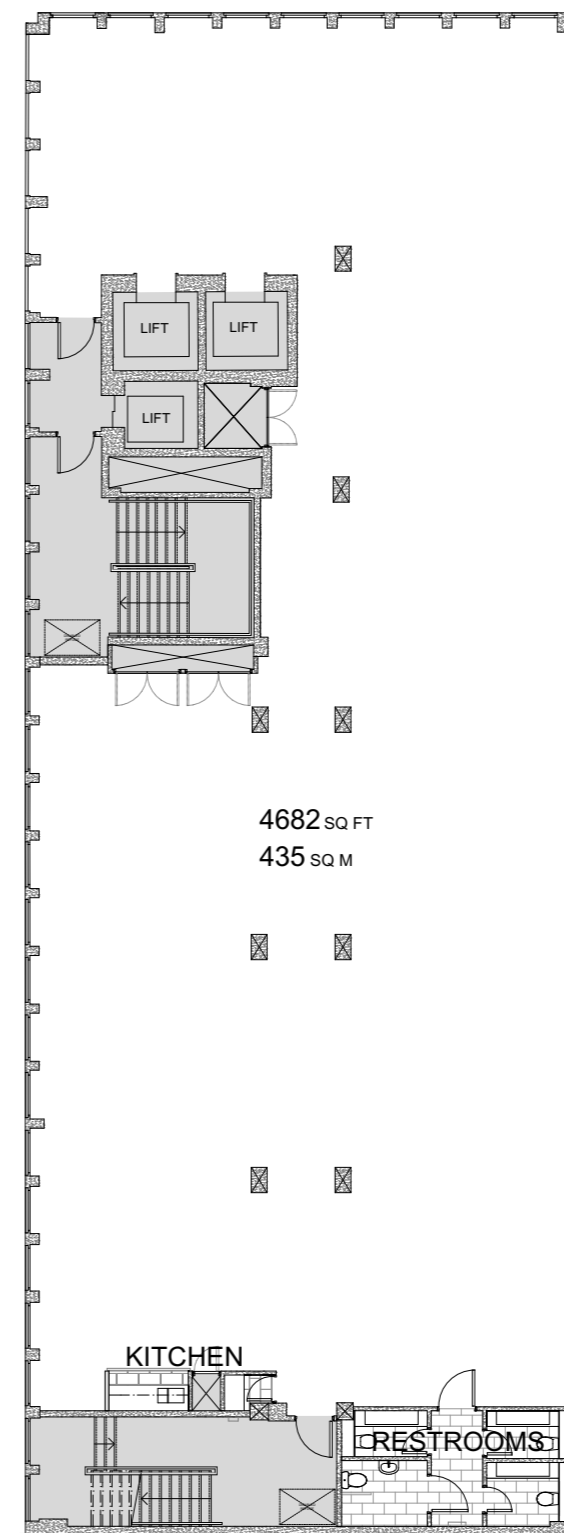


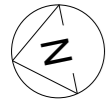


Notes:
Do not Scale from this drawing Use figured dimensions only

FLOOR PLAN: TENTH

UPPER THAMES STREET

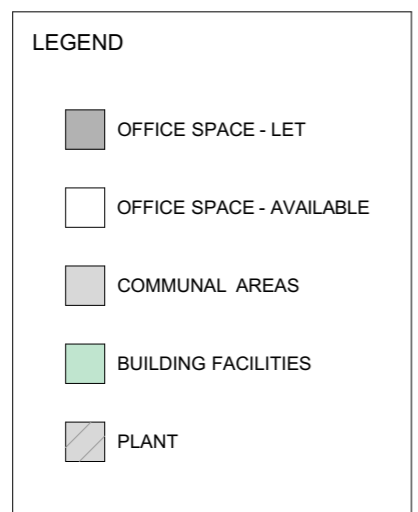
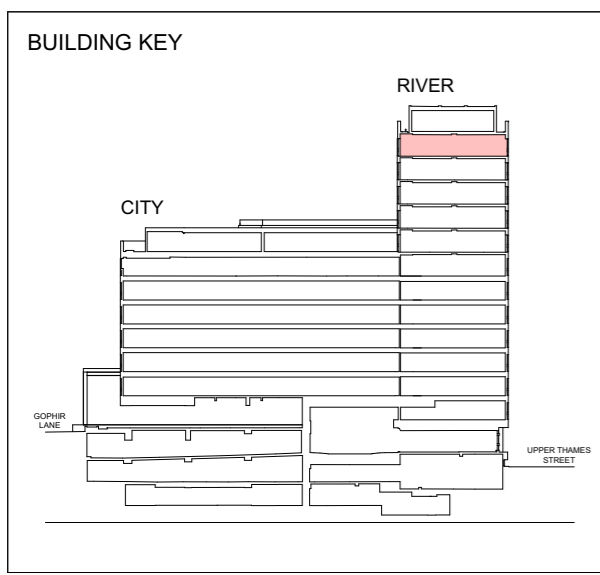
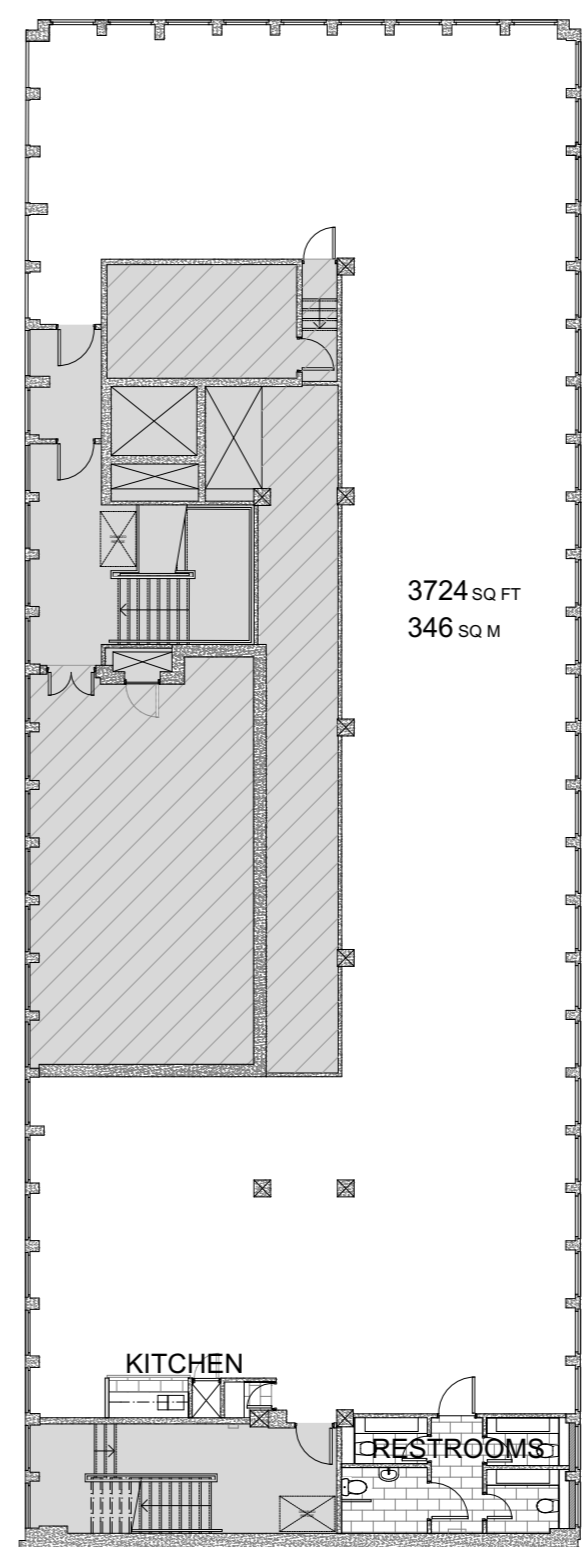




Notes:
Do not Scale from this drawing Use figured dimensions only

FLOOR PLAN: ELEVENTH

UPPER THAMES STREET





TECHNICAL SPECIFICATION

DESIGN OCCUPANCY LEVELS

All levels: workplace density of 1 person per 8 sq m of net internal area

MEANS OF ESCAPE

All levels: 1 person per 8 sq m of net internal area

STRUCTURAL GRID

Structural grid generally: 5.7m x 5.7m
Planning grid: 1.5m

RAISED FLOOR

Office floor: 65mm. Fully galvanised steel raised access flooring

FLOOR LOADINGS

Office areas: 2.5 kN / sq m + 1 kN / sq m partitions

MECHANICAL SERVICES

Individual DX VRF systems serve each floor with the internal fan coil units suspended on the raft ceiling
Future partitioning can be achieved with minimum disruption to fan coil units

Lighting 10W / sq m
Small power 25W / sq m

TENANT FACILITIES

New concept Drake & Morgan bar & restaurant located on the ground floor

The basement will contain a membership subscription based gym operated by Gymbox

Located on the 1st floor, a business lounge is being built which draws inspiration from various private members' clubs to create an interesting space where tenants can continue working, meet with clients or to socialise/network within the building

An 802.11AC wireless network provides internet access for tenants and visitors

The Landlord has partnered with a managed communications provider specialising in datacentres to provide the following affordable services at very short lead times:

- Leased line, including internet connectivity and data centre interconnects
- SIP trunking services
- Hosted VoIP Phone services

Secure bicycle parking is available
Designated private kitchenette on each office floor

ELECTRICAL SERVICES

Lighting 10W / sq m
Small power 25W / sq m

Back-up generator is provided rated at 300Kva
The generator provides full standby support for the life safety services and tenants' server room
Capacity is available to all tenants (by separate arrangement)

OFFICE LIGHTING

The lighting installation is designed to comply with CIBSE code for interior lighting LG7
The design uses only low energy luminaires
400 lux average maintained luminance at the working plane

VERTICAL TRANSPORTATION

River Wing has duplex control with the 2 x 13 person passenger lifts and the 8 person passenger/fire fighting lift running at 2.5 meters per second
The two lifts in City Wing have a duplex control with the 2 x 10 person passenger lifts running at 2.5 meters per second
The lift performances are based on a design occupancy level of 1 person per 8 sq m
With standard allowances for absenteeism and utilisation, achieving BCO 2014 compliance

TOILET, SHOWER AND CHANGING FACILITIES

Each office floor has between 4 and 8 self-contained WC's including one disabled WC
Unisex 100%
All levels 1 person per 8 Sq m

SUSTAINABILITY

EPC target rating Grade A
BREEAM target rating of Very Good
Adaptive re-use and enhancement of existing building fabric
Enhanced glazing incorporating either double glazed units or secondary glazing to increase thermal and acoustic performance
Water efficient fixtures and fittings
LED light fittings installed in all areas to reduce energy consumption and improve longevity
Secure cycle spaces with shower provision

TELECOMS INSTALLATIONS

A communal, roof mounted aerial system is provided with the option to connect to TV and radio services

IT / DATA

A dedicated Primary and Secondary telecoms riser is provided with the following services available on each floor:

- Single mode fibre links from basement server room (for tenant use)
- (BT) blown fibre tubing
- Copper pairs

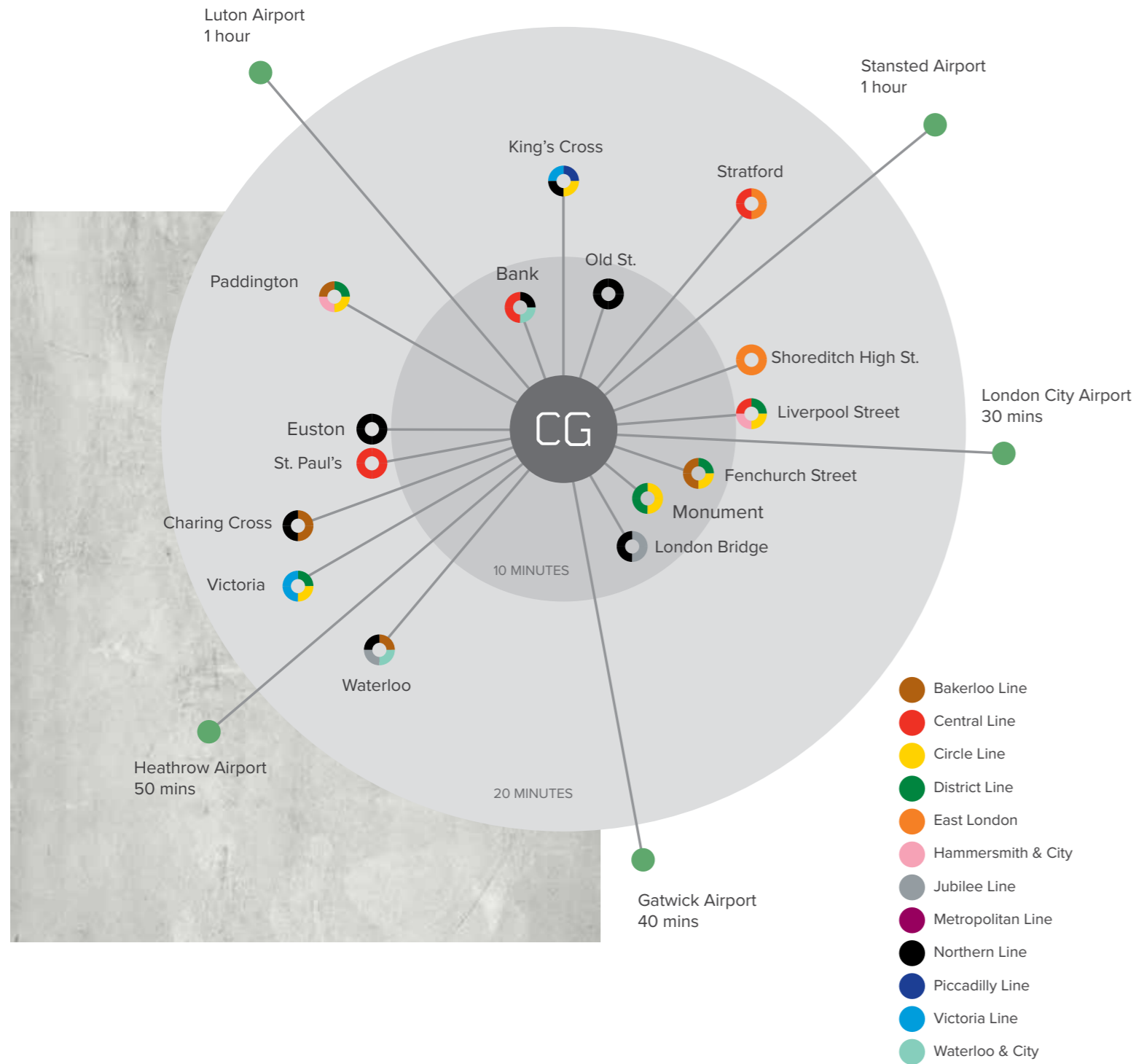
Secure space is available in the server room for tenants to install equipment racks
BT and Colt fibre are available pre-installed into the telecoms intake room
Future provision for Virgin Media and Zayo networks

SECURITY

Access Control: Proximity cards control access to front doors, lifts, stairwell and office doors
CCTV: An IP based CCTV system is installed to allow for central monitoring
Intruder alarm: Installed on fire exits and monitored by central security



LOCATION & TRANSPORT

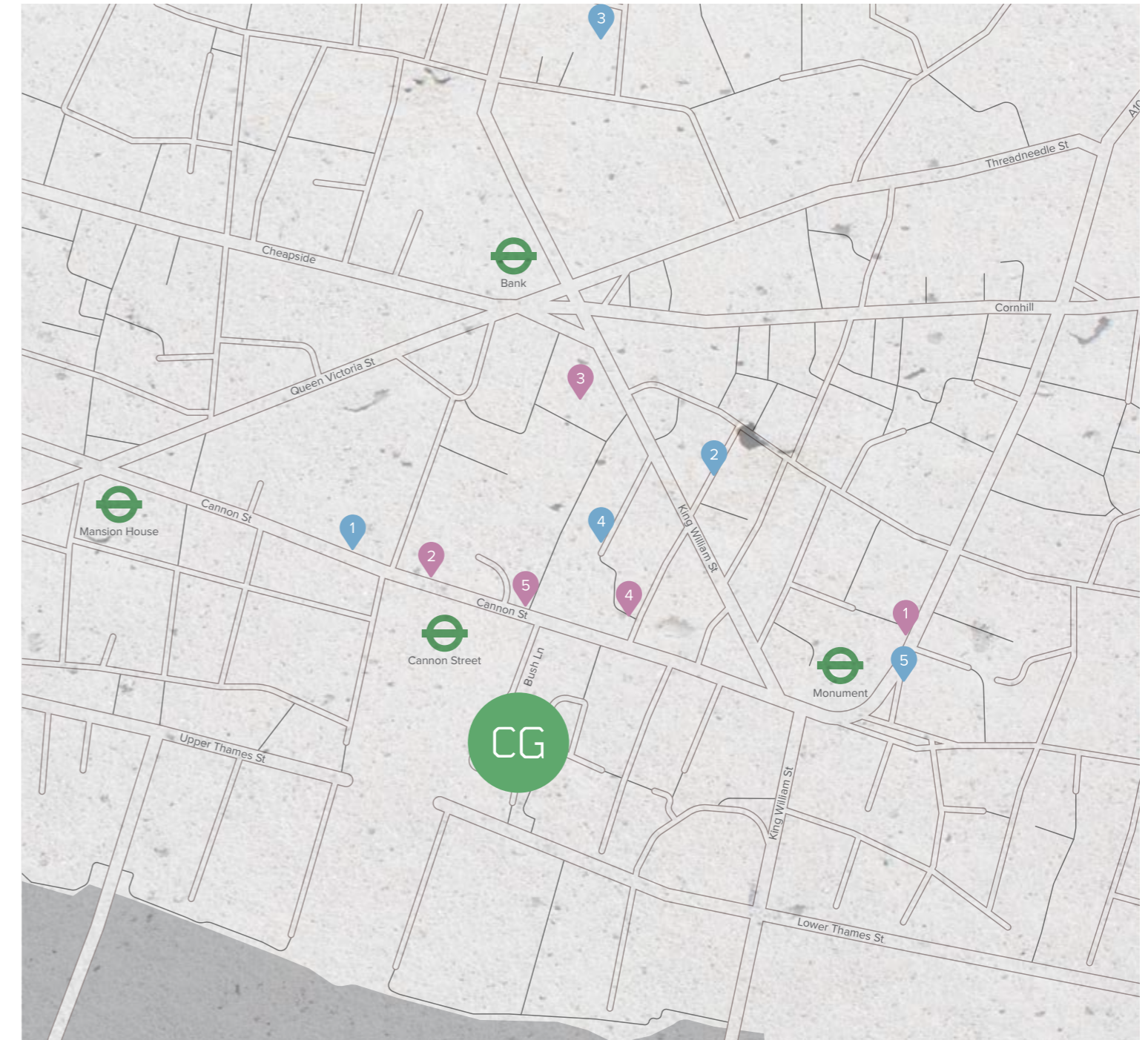


LIFESTYLE

- Nicholson & Griffin Grooming
- Hawes & Curtis
- The NED Hotel
- Go Native Serviced Apartments
- Sky Gardens

FOOD & DRINK

- The Folly
- Smiths of Smithfield
- 1 Lombard Street
- The Vintry
- Harry's Bar



Cannon Green is amongst the most well connected buildings in the City which takes the stress out of commuting and provides ready access for clients. All of which saves time and adds to the considerable attractions provided by Cannon Green.

CROSSRAIL

- Due to open in 2018.
- Links 40 stations between Reading & Heathrow in the West to Shenfield and Abbey Wood in the East.
- Journey times from the City include Canary Wharf (6 minutes), Bond Street (7 minutes) and Heathrow (35 minutes).
- 24 trains per hour.



CANNON STREET



Cannon Green occupies a prime location in the heart of the City of London, adjacent to Cannon Street station and situated between Cannon Street and Upper Thames Street.

The area is home to a large number of headquarters buildings and some of the City's key landmarks are in close proximity, including the Bank of England (300m); the Royal Exchange (300m); One New Change (650m); Stock Exchange (800m) and the Lloyd's Building (800m).

The local area has undergone a transformation in recent years, with several high profile, mixed use developments having completed. Furthermore, local amenity provision has been significantly enhanced and will further benefit from the completion of Foster & Partners' designed Bloomberg Place, where c.29,000 ft² of retail accommodation is due to be delivered on a covered, pedestrianised street by 2016 offering a plethora of bars, restaurants and cafés.

5 THINGS TO DO

- 1 **Mansion House**
cityoflondon.gov.uk
- 2 **Royal Exchange**
rxfx.co.uk
- 3 **Harris and Hoole**
harrisandhoole.co.uk
- 4 **Harry's Bar**
harrys.co.uk
- 5 **Drake & Morgan, Cannon Green**
drakeandmorgan.co.uk

NEW STYLE IN THE SQUARE MILE

THE TAILOR

Home is?
Marylebone.

Where do you stay in London?
Claridge's Bar.

Best place in London for a first date?
Duck & Waffle in The Heron Tower.

Most romantic thing someones done for you?
No comment!

Earliest London memory?
Visiting the Natural History Museum. I will never forget the awe-inspiring diplodocus in the entrance hall.

Best meal?
The steak tartare at 34, Grosvenor Square, W1.

What would you do as Mayor for the day?
Take taxis and buses off London roads, thus creating more space on the roads.

Building in London you'd most like to buy?
Buckingham Palace!

Favourite drinking hole?
Dukes, St. James's Place.

Favourite London discovery?
RAC Club, 89 Pall Mall.

Who do you call when you want to have fun?
Piers Richardson.



OLIVER J BENJAMIN

Oliver J Benjamin is located in the heart of the City of London and is regarded as one of London's finest tailors. Whether it's a silk shirt, an overcoat or a three piece suit, Oliver Benjamin can fulfill all your needs.

With an elite client list and an ever growing selection to choose from, Oliver J Benjamin is a hidden gem that only true Londoners are lucky enough to know about.

We popped by and he shared some tips and tales of life - and tailoring - in the City.

Best place to let your hair down?
Kabaret back in the day.

Best place for a night cap?
Bar Italia. I always order a coffee and one of their chicken sandwiches.

Favourite shops?
Edward Green, Andrew Martin, Rapha & Liberty's.

Whats your biggest extravagance?
Cars. I adore classic Porsches.

Best thing a London cabbie has said to you?
Can't remember.

Building you'd like to be locked in overnight?
Claridge's.

Best piece of advice you've ever been given?
You can do it.

Who is your hero?
Burt Reynolds.

Last album you bought?
To be honest, I now download all my music from Spotify or Apple.

At the moment you are...
Looking after my youngest daughter. She is now 5 weeks old.

What do you collect?
As many cars, watches and shoes as I can!

NEW STYLE IN THE SQUARE MILE . . .

THE CHAP

Home is?
Columbia Road Flower Market.

Where do you stay in London?
At my home.

Best place in London for a first date?
The Princess in Shoreditch, serves good food with a pub environment.

Most romantic thing someones done for you?
Breakfast in bed and being pampered all day.

Earliest London memory?
Going to London Zoo and Regent's Park.

Best meal?
Japanese at Roha in Soho.

What would you do as Mayor for the day?
Wear an Andy Warhol wig and call myself Boris.

Building in London you'd most like to buy?
It would be the first building I sold in Summers Street EC1. It was the first warehouse residential development in East London by Manhattan Loft Corporation. A great building.

Favourite drinking hole?
Formerly the Griffin (gone but not forgotten) now The Golden Heart... Classic East End boozers.

Favourite London discovery?
My first house on Broadway Market, London Fields.



TOBIAS ALLAN

Tobias Allen has closed many a large deal in his time and knows what business in London is all about.

He has been part of the property industry and invested in numerous residential developments over the last couple of decades. Known in the industry for his cheeky charm and talent at closing a deal, he is dead cert to fill us in on some of London's finer establishments and his favourite haunts.

Who do you call when you want to have fun?
Ghostbusters!

Best place to let your hair down?
Casita in Shoreditch.

Best place for a night cap?
Blues Kitchen.

Favourite shops?
Spitalfields Market.

Whats your biggest extravagance?
Life in general.

Best thing a London cabbie has said to you?
Always best when they say nothing.

Building you'd like to be locked in overnight?
The Shard.

Best piece of advice you've ever been given?
Live life to the full and be happy.

Who is your hero?
My Mum & Dad.

Last album you bought?
Seasick Steve - You can't teach an old dog new tricks.

At the moment you are...
About to drive across India on an old Royal Enfield for a year trip.

What do you collect?
Good memories.

IN THE NEIGHBOURHOOD . . .

ST PAUL'S



Most famous for its iconic Anglican cathedral, St Paul's features some of the most visited destinations in central London including Tate Modern.

Although recognised for its historic and cultural significance, the neighbourhood has also flourished in terms of its culinary offering with a plethora of restaurants, bars and pubs.

5 THINGS TO DO

1 Tate Modern
tate.org.uk/visit/tate-modern

2 St Paul's Cathedral
stpauls.co.uk

3 One New Change Shopping centre
onenewchange.com

4 Bread Street Kitchen
gordonramsayrestaurants.com

5 Alchemy
alchemycoffee.co.uk/cafe

IN THE NEIGHBOURHOOD . . .

LIVERPOOL ST



A hub of connectivity with rail, underground and part of the crossrail network, this area of London is a mix of cultural institutions, restaurants and markets as well as a number of businesses and headquarters.

5 THINGS TO DO

- 1 **Sushi Samba**
sushisamba.com
- 2 **Barbican Centre**
barbican.org.uk
- 3 **Spitalfields Market**
spitalfields.co.uk
- 4 **Bloomberg Space**
bloombergspace.com
- 5 **Hummingbird Bakery**
hummingbirdbakery.com

NEW STYLE IN THE SQUARE MILE . . .

MARKETING GURU

Home is?

A converted warehouse in Stoke Newington; our street has quite a rare community vibe.

Where do you stay in London?

South Place Hotel has the warmest most personal touches, is luxurious and has great food & drink. The more I stay in other hotels, the more I appreciate what the team built there.

Best place in London for a first date?

Lounge Bohemia. The drinks are strong, and each cocktail has a story and some theatre to go with it.

Most romantic thing someone's done for you?

My boyfriend is beyond good, he keeps one upping himself. He organised a wine from my birth year on our first date, shipped a lamp I wanted from a boutique in Paris as a Christmas surprise... He feeds my bunny Coriander when I'm away, and writes great love notes too.

Earliest London memory?

I arrived in London with my bike and was determined to cycle everywhere to get to know the City. It was the summer of the Olympics, cycling home late one night I saw one of the British Olympians arriving home, with a crowd of their family and friends to welcome them. It was really moving to witness such a private moment, the streets were otherwise empty. I still find cycling at night in London quite magical.

Best meal?

Andina. All the ceviches and all the Pisco Sours.

Building in London you'd most like to buy?

I love the garden keepers cottages in the public parks. The one in Springfield Park is sublime.

Favourite drinking hole?

Sager and Wilde as its nice and



CAMILLE LORIGO

Camille Lorigo has been involved in numerous industries from fashion to hospitality and everything else in between.

She has won awards in her field and is generally 'Missus Marketing'. She has recently branched out and set up her own freelance business, and you may just see her rushing round the City doing what she does best.

Camille has given us a heads up on some of London's hidden gems and lets us know a bit more about her outgoing personality.

small, has beautiful wines, and unrivalled posh cheese toasties.

Favourite London discovery?

The Victorian planetarium in Hampstead.

Best place to let your hair down?

The Yellow Door if I'm looking for trouble. It's like a house party.

Best place for a night cap?

Printers & Stationers off Columbia Road - London's most original bar.

Favourite shops?

Glasshouse in Shoreditch for small brands, Strut in Stoke Newington for designer vintage.

What's your biggest extravagance?

Dining out. What better?

Best thing a London cabbie has said to you?

'You're going to make your train.' I'll never cut a Eurostar so close again.

Building you'd like to be locked in overnight?

Harrods. A night of gorging in the Food Hall, bathing in good stuff at the perfume counter, and trying EVERYTHING on in the women's couture department.

Best piece of advice you've ever been given?

Wisdom through compassion. When I was young my father bought me a copper bracelet with this buddhist mantra on it. I still have it.

Who is your hero?

Credit to the unsung and unknown, i'm sure there are many, but if I had to pick someone I'd say the Dalai Lama. The smile says it all.

At the moment you are...

Sitting on my couch trying to get my bunny to wear a musical Santa hat.

What do you collect?

Evening gowns.

NEW STYLE IN THE SQUARE MILE . . .

THE PRODUCER

Home is?
London Fields.

Where do you stay in London?
The Ritz.

Best place in London for a first date?
George Hotel 14th Floor.

Most romantic thing someones done for you?
Ate a flower for me!

Earliest London memory?
A cabbie shouting at me!

Best meal?
St Johns - Farringdon.

What would you do as Mayor for the day?
Make music on the streets legal!

Building in London you'd most like to buy?
Geffrye Museum.

Favourite drinking hole?
The French House.

Favourite London discovery?
The underground rivers.

Who do you call when you want to have fun?
Uber.



JAN BLUMENTRATH

Jan moved from his native Germany to be part of the London music scene. Since this bold move, he has produced music for some of London's coolest acts including Dominique Young Unique and Pearl Negras.

If you are looking to listen to something new and interesting Jan will certainly deliver. We had a catch up with Jan, where he gave us some insight in to London's underground and the 'wilder side' of nightlife in the City.

Best place to let your hair down?
The Lido - Hampstead Heath.

Best place for a night cap?
Tinseltown, Farringdon.

Favourite shops?
The M&M's shop Leicester Square and all the music shops on Denmark Street.

Whats your biggest extravagance?
ARP2600 Synthesizer.

Best thing a London cabbie has said to you?
Get a haircut.

Building you'd like to be locked in overnight?
Selfridges.

Best piece of advice you've ever been given?
Keep a straight face when you tell a joke in London.

Who is your hero?
David Frank.

Last album you bought?
Thee Spivs -
The crowds and the sounds.

At the moment you are...
Locked in a basement trying to finish a record.

What do you collect?
Dance moves.

IN THE NEIGHBOURHOOD . . .

ALDGATE



Once the Eastern-most gateway through the London Wall connecting the City of London to the East End, the area of Aldgate incorporates an eclectic mix of art galleries, roof top restaurants and iconic London landmarks such as Tower Bridge and the Tower of London.

5 THINGS TO DO

- 1 **Whitechapel Gallery**
whitechapelgallery.org
- 2 **The SkyLounge**
doubletree3.hilton.com
- 3 **Tower of London**
hrp.org.uk/tower-of-london
- 4 **Love in a cup**
loveinacup.eu
- 5 **Culpepper Roof Gardens**
theculpepper.com/garden

IN THE NEIGHBOURHOOD . . .

FARRINGDON



An historic area of central London, Farringdon borders Holborn and Clerkenwell making this an increasingly popular neighbourhood with iconic jewellers, markets and award winning cocktail bars.

It's a unique district where medieval City gates meet artisanal producers making it one of London's most creative neighbourhoods.

5 THINGS TO DO

- 1 **Zetter Townhouse**
thezettertownhouse.com
- 2 **Hatton Garden**
hatton-garden.net
- 3 **Smithfield Market**
smithfieldmarket.com
- 4 **The Craft Beer Co. Clerkenwell**
thecraftbeerco.com
- 5 **The Modern Pantry**
themodernpantry.co.uk

NEW STYLE IN THE SQUARE MILE . . .

THE ARTISAN

Home is?
Shoreditch.

Where do you stay in London?
The Goring Hotel.

Best place in London for a first date?
Parliament Hill for a nice walk!

Most romantic thing someones done for you?
Taken me for a walk on Parliament Hill.

Earliest London memory?
Police helicopters waking me up in Shepherd's Bush on a lovely summers night.

Best meal?
Hakkasan London.

What would you do as Mayor for the day?
Turn the traffic lights off.

Building in London you'd most like to buy?
St Pancras – because its a beautiful example of neo-gothic architecture.

Favourite drinking hole?
The Golden Heart.

Favourite London discovery?
London itself, with something exciting going on every hour of every day of every week.

Who do you call when you want to have fun?
Friends.



DAVE LATHAM

Dave Latham is an expert at restoring antiques and renovating beautiful artefacts. He is based in an old church yard right in the heart of the City and certainly is one of a kind.

He has worked on pieces for private houses, museums and even stately homes. His carving and gilding skills are somewhat legendary by those in the know.

After a cup of tea in his work shop, Dave filled us in on the must go places and what he loves about London.

Best place to let your hair down?
The Barbican.

Best place for a night cap?
Portside – Rivington Street.

Favourite shops?
Passione vino and Harvey Nichols.

Whats your biggest extravagance?
A boat that I don't use.

Best thing a London cabbie has said to you?
He was driving down a one way road - the opposite direction of where I wanted to go, and I said, this is a one way road. He replied - I'm only going one way.

Building you'd like to be locked in overnight?
St Pancras, Simply my favourite building.

Best piece of advice you've ever been given?
Shut up!

Who is your hero?
I don't have any heroes... Maybe Hellboy!

Last album you bought?
Discovery.

At the moment you are...
Doing an interview when I should be at work renovating a neo-gothic fire grate.

What do you collect?
Information.

THE CREATIVE

Home is?
Shoreditch.

Where do you stay in London?
If I had to, I'd stay at The Goring Hotel.

Best place in London for a first date?
Cecconi's.

Most romantic thing someones done for you?
My wife Sylvie looks after me everyday – that's the most romantic thing someone's done for me.

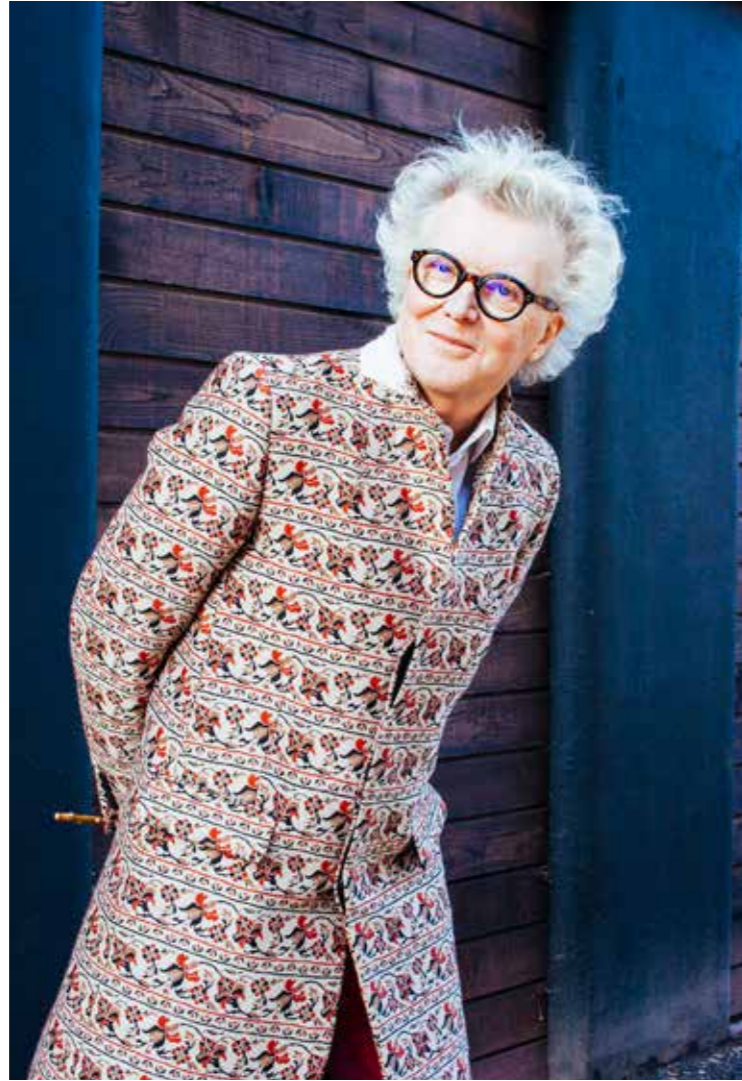
Earliest London memory?
Turning up at Smithfield Meat Market at 5am on a Saturday to fish with the Smithfield Meat Market fishing club, that was created by my father and called The City Nomads. This is not only my earliest memory but my happiest one – being with my father and all his friends who were such charming chaps and who took such good care of me!

Best meal?
Rules Restaurant's steak and kidney pudding.

What would you do as Mayor for the day?
I would make sure that every child in London got a present for Christmas because there are too many that don't.

Building in London you'd most like to buy?
Buckingham Palace.

Favourite drinking hole?
Electricity Showroom.



STEVE EDGE

Steve Edge is the founder and creative director of Edge Design LTD. His knowledge, experience and eccentric character are all legendary within the branding industry.

He has worked with some of the leading brands in the world, and is somewhat part of the furniture in the Shoreditch neighbourhood having been famously titled 'Lord Shoreditch'.

Here we catch up with Steve where he lets us in on some secrets that only a true Londoner would know....

Favourite London discovery?
98 Curtain Road,
Cathy's Cocktail Bar.

Who do you call when you want to have fun?
Jamie Lawless.

Best place to let your hair down?
The Police Station.

Best place for a night cap?
The Flyfisher's Club.

Favourite shops?
Farlows of Pall Mall, Gucci, Purdey's and Selfridges.

Whats your biggest extravagance?
Flyfishing.

Best thing a London cabbie has said to you?
'I know you - you're Lord Shoreditch!!'

Building you'd like to be locked in overnight?
Victoria's Secret.

Best piece of advice you've ever been given?
My father once told me to 'always keep your own counsel'.

Who is your hero?
Salvador Dalí.

Last album you bought?
Stephanie O'Brien –
Leave Your Heart at the Door.

At the moment you are...
So, so happy!

What do you collect?
Everything.

SHOREDITCH



Sitting at the heart of one of the most vibrant areas of London adjacent to Hoxton and just minutes from London Liverpool Street, Shoreditch has become a hub of innovation and creativity as well as a mecca for trendy restaurants and hip hotels.

5 THINGS TO DO

- 1 **Tramshed**
chickenandsteak.co.uk
- 2 **Boxpark**
boxpark.co.uk
- 3 **Ace Hotel**
acehotel.com/london
- 4 **House of Hackney**
houseofhackney.com
- 5 **Shoreditch House**
shoreditchhouse.com

IN THE NEIGHBOURHOOD . . .

BRICK LANE



As a hub for London's Bangladeshi community, Brick Lane in East London is famed for its curry restaurants and has grown to become an extremely popular destination for live music, shopping and food, drawing an artistic and edgy crowd to the area.

5 THINGS TO DO

- 1 **Columbia Road Flower Market**
columbiaroad.info
- 2 **Absolute Vintage**
absolutevintage.co.uk
- 3 **Brick Lane Gallery**
thebricklanegallery.com
- 4 **All Star Lanes**
allstarlanes.co.uk
- 5 **Cereal Killer Café**
cerealkillercafe.co.uk

NEW STYLE IN THE SQUARE MILE . . .

THE HAT MAN

Home is?
Queen's Park.

Where do you stay in London?
An 'Old Dairy'.

Best place in London for a first date?
Duck & Waffle in The Heron Tower.

Most romantic thing someones done for you?
Still waiting for that one... Any offers, get in touch.

Earliest London memory?
12 years old arriving on my own on the overnight train from Scotland at King's Cross and walking in awe to Waterloo.

Best meal?
Spaghetti Bolognese.

What would you do as Mayor for the day?
Open up all the empty buildings to provide shelter for all the homeless... Even one night under cover makes a difference.

Building in London you'd most like to buy?
Old Spitalfields Market. Save a fortune on rent!

Favourite drinking hole?
The King's Stores... Great beer, great food and even better staff.

Favourite London discovery?
Always finding something new, it's one of London's greatest features.

Who do you call when you want to have fun?
Mal & Simon I work with... Top men.



COLIN ROSIE

Colin Rosie is one of Spitalfields Markets most colourful characters. His stall stocks a fine collection of fantastic hats in all shapes and sizes. When your in need of a hat - Colin's your man.

He set up his hat business whilst living as a homeless man and has never looked back.

Not only is his story inspiring but he has kindly agreed to share his local knowledge and give us some tips of his favourite haunts in London.

Best place to let your hair down?
The Bell in Walthamstow.

Best place for a night cap?
I'd be in either The King's Stores or The Bell.

Favourite shops?
There's not one... but I could shop at The Last Stop or The Curious all day long.

Whats your biggest extravagance?
Hats.

Best thing a London cabbie has said to you?
It's true then, a gentleman can sit in the back of a black cab without taking his top hat off then.

Building you'd like to be locked in overnight?
British Museum.

Best piece of advice you've ever been given?
Live for now... Yesterday's gone, learn from it... Tomorrow will soon come along... But enjoy 'right now'... And I do.

Who is your hero?
No one in particular.

Last album you bought?
Sam Smith - In the Lonely Hour.

At the moment you are...
Fantastic.

What do you collect?
Hats.

NEW STYLE IN THE SQUARE MILE . . .

THE CURATOR

Home is?
Crystal Palace.

Where do you stay in London?
The Hoxton Hotel! Nice and close to work if I don't want to travel home!

Best place in London for a first date?
Anywhere on a roof top!

Most romantic thing someones done for you?
A surprise visit to Morocco.

Earliest London memory?
Damien Hirst's 'Pharmacy' installation.

Best meal?
The Fat Duck! Heston Blumenthal's restaurant.

What would you do as Mayor for the day?
Change the education department!

Building in London you'd most like to buy?
That amazing circular yellow building next to the Tate Modern!

Favourite drinking hole?
The Seven Stars Pub - near Chancery Lane.

Favourite London discovery?
Postman's Park near St Paul's that commemorates people who lost their lives helping others. Its incredible!

Who do you call when you want to have fun?
My best friends!!!

Best place to let your hair down?
Anywhere my friends are!

Best place for a night cap?
The Groucho Club, Soho.



REBECCA LIDERT

Rebecca Lidert is the curator of one of London's most exciting and up and coming galleries 'The Cock N Bull'.

Whether it be Shoreditch Street art, installation or figurative painting she is at the forefront of her field bringing you a wide array of exceptional artworks.

We were intrigued by her innovative eye and wanted to find out more about Rebecca and her favourite things to do in London.

Favourite shops?
I don't do any shopping at the moment!! I have a baby!

Whats your biggest extravagance?
Shoes shoes shoes!

Best thing a London cabbie has said to you?
I was living in Stepney Green when I was 23 and a cab driver said "its a bit dodgy round here" and kindly gave me his number and said to call him if I ever need any help getting home.

Building you'd like to be locked in overnight?
The Tate Modern!

Best piece of advice you've ever been given?
When I first started at the gallery, I said to Mark Hix (the owner) I don't know how to do any PR - i've never done it before - and he said to me "do you think I knew how to do it when i first started? get on with it".

Who is your hero?
It has to be my mother. She came over from Jamaica with nothing at all and went into education and did a masters degree. She then became an art director of an American museum and an International school!

Last album you bought?
Bruno Mars!

At the moment you are...
I'm commissioning the next HIX Magazine issue!

What do you collect?
Shoes, Shoes, Shoes!

IN THE NEIGHBOURHOOD . . .

HOXTON



Arguably one of the trendiest parts of the capital, Hoxton is where the suits of the City go to mingle with cockneys and the fashion crowd. Filled with pubs, bars and restaurants for those in the know, there is always a pop-up in the pipeline in this vibrant part of London.

5 THINGS TO DO

- 1 **Hoxton Hotel**
thehoxton.com
- 2 **Happiness Forgets**
happinessforgets.com
- 3 **Queen of Hoxton**
queenofhoxton.com
- 4 **Charlie Smith Gallery**
charliesmithlondon.com
- 5 **Hoxton Grill**
hoxtongrill.com


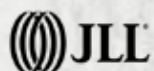
OFFICE ENQUIRIES

Ricky Blair
ricky.blair@colliers.com
020 7101 2020

Matthew Mycock
matthew.mycock@eu.jll.com
020 7399 5862

Olly Jay
oliver.jay@colliers.com
020 7101 2020

Lois Fletcher
lois.fletcher@eu.jll.com
020 7399 5696



CANNONGREEN.CO.UK

Disclaimer: Computer Generated Images (CGIs) are indicative only. Artists' impressions are drawn from an imaginary viewpoint within an open space and are intended to give an impression of the proposed design of the building. Neither the artists' impressions nor the CGI's are intended to give an accurate description of the property offered to let, its setting or its surroundings.

Misrepresentation act 1967: JLL, Colliers, Shelley Sandzer and Davis Coffey Lyons for themselves and for the vendors (or lessors) of this property whose agents they are, give notice that:

1. these particulars do not constitute, nor constitute any part of, an offer or contract. 2. none of the statements contained in these particulars as to the property are to be relied on as statements or representations of fact. 3. any intending purchaser or lessee must satisfy himself by inspection or otherwise as to the correctness of each of the statements contained in these particulars. 4. the vendors (or lessors) do not make or give any of the named agents or any person in their employment any authority to make or give, any representation or warranty whatever in relation to this property. Finance Act 1989: unless otherwise stated all prices and rents are quoted exclusive of Vat. Property Misdescriptions Act 1991: these details are believed to be correct at the time of compilation but may be subject to subsequent amendment. January 2017.

