



VIRGINIA HOUSE
CENTRAL TO BUSINESS
SOLIHULL

928 SQ.FT - 11,166 SQ.FT

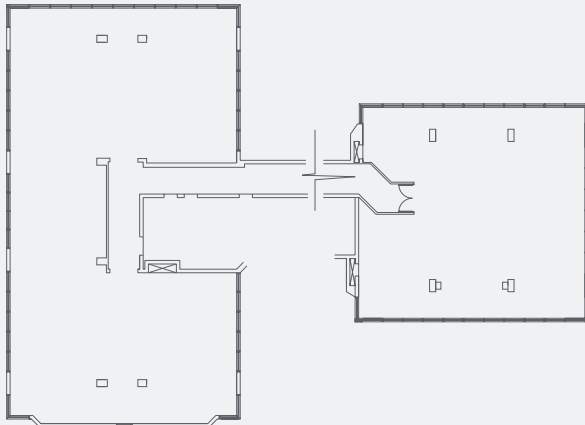
SUPERB OFFICE SPACE IN SOLIHULL WITH ON-SITE PARKING
LOCATED CLOSE TO THE TOWN CENTRE & M42 CORRIDOR

WWW.VIRGINIAHOUSESOLIHULL.CO.UK

SPECIFICATION

Virginia House provides refurbished office suites that benefit from:

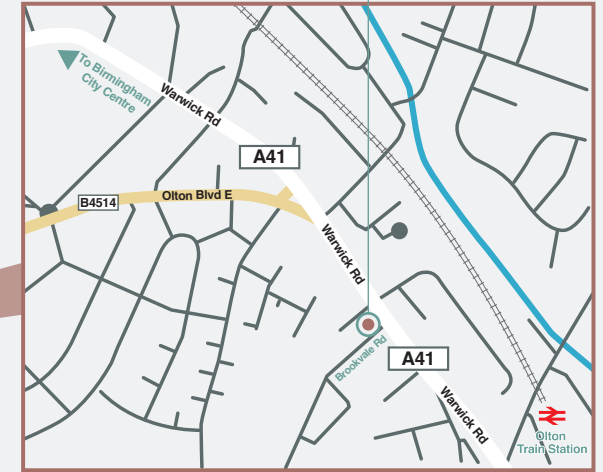
- Glazed reception
- DDA Compliance
- Kitchenette
- Passenger lift
- LG7 Compliant lighting
- Generous on-site parking
- EPC - C (54 points)



TYPICAL FLOORPLAN



VIRGINIA HOUSE



LOCATION

Located on Warwick Road, Virginia House is within close proximity to Solihull Town Centre and its convenient public transport links (Olton Railway Station). The building provides easy access to the M42 Corridor and is within 5 miles of Birmingham City Centre.

SAT NAV REF: B92 7HX

TERMS & TENURE

The accommodation is available on new effective FRI leases for a term of years to be agreed.

[WWW.VIRGINIAHOUSESOLIHULL.CO.UK](http://www.virginiahousesolihull.co.uk)

VICKI BURNETT
D. 0121 214 9938
E. vicki.burnett@eu.jll.com
W. www.jll.com

CHARLES WARRACK
D. 0121 234 0457
E. charles.warrack@johnsonfellows.co.uk
W. www.johnsonfellows.co.uk



Misrepresentation Act 1967, Unfair Contract Terms Act 1977, The Property Misdescriptions Act 1991. These particulars are issued without any responsibility on the part of the agent and are not to be construed as containing any representation or fact upon which any person is entitled to rely. Neither the agent nor any person in their employment has any authority to make or give any representation or warranty whatsoever in relation to the property. These details are provided only as a general guide to what is being offered subject to contract and subject to lease being available and are not intended to be construed as containing any representation or fact upon which any interested party is entitled to rely. February 2016. Crafted by CAB Property (part of the CAB Studios Group).