

To Let

Office 11,460 sq ft NIA

Fitzwilliam House, 10, St. Mary Axe, London, Greater London, EC3A 8AE



Summary

- 2nd Floor - 11,460 Sq Ft, Fitzwilliam House, 10 St. Mary Axe, EC3
- Type: Office
- Tenure: To Let
- Size: 11,460 sq ft NIA
- Rent: On application

Highlights

- NO VAT
- Fitted out
- Excellent communication links
- Open-plan work space

Location

Fitzwilliam House is in a prominent City of London location with immediate transport links to Liverpool Street, Fenchurch Street and Bank stations. Situated in the heart of the City's insurance district, the property is adjacent to the Lloyd's Building and benefits from numerous nearby amenities including Leadenhall Market and Broadgate Circle.

Availability

Available by way of sublease for a term until May 2022

Floor / Unit	Sq ft	Rent	Business Rates	Service Charge
2nd	11,460	ROA	£19.64 per sq ft	£11 per sq ft

Fully Fitted Flexible Office Accommodation

The building has undergone a comprehensive refurbishment of the impressive entrance and reception. The available accommodation is offered with an open plan fit out in situ (it currently accommodates c.127 workstations) and benefits from meeting rooms, reception, kitchen and break out areas.

Amenities

- High Quality fit out
- Air-Conditioning
- Suspended Ceiling
- Raised floors
- Lifts
- Male and female WCs
- Manned reception
- 24 hour access

Energy Performance Rating

Available upon request.

Rent

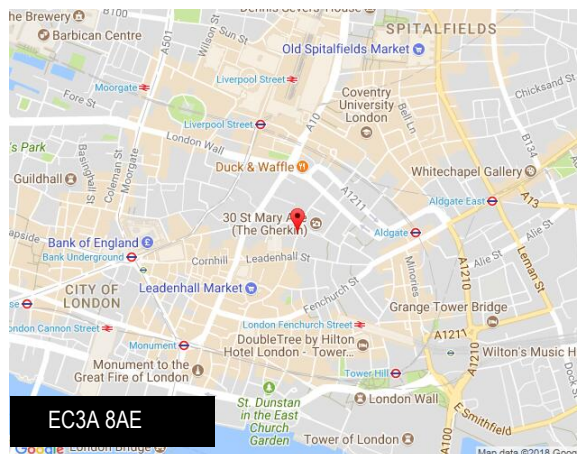
On application

Business Rates

Rates Payable: £19.64 per sq ft

Service Charge

£11 per sq ft



Viewing & Further Information

If you are interested and would like more information please get in touch.

Contacts

William Franks

t: +44 (0)207 399 5711

e: william.franks@eu.jll.com

Katie Sommer (nee O'Reilly)

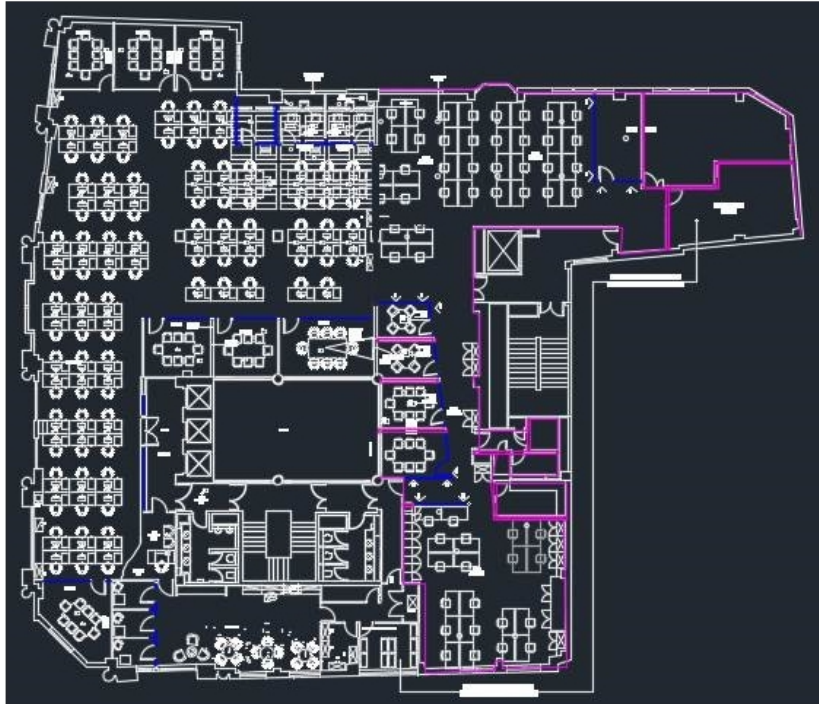
t: +44 (0)207 399 5125

e: katie.sommer@eu.jll.com

Danielle Kerindi

t: +44 (0)20 7852 4934

e: Danielle.Kerindi@eu.jll.com



jll.co.uk/property

JLL for themselves and for the vendors or lessors of this property whose agents they are, give notice that:- a. the particulars are set out as a general outline only for guidance and do not constitute, nor constitute part of, an offer or contract; b. all descriptions, dimensions, references to condition and necessary permissions for use and occupation, and other details are believed to be correct, but any intending purchasers, tenants or third parties should not rely on them as statements or representations of fact but satisfy themselves that they are correct by inspection or otherwise; c. All properties are measured in accordance with the RICS property measurement, 1st Edition May 2015 (incorporating IPMS) unless designated NIA/GIA/GEA, in which case properties are measured in accordance with the RICS Code of Measuring Practice (6th Edition); d. Any images may be computer generated. Any photographs show only certain parts of the property as they appeared at the time they were taken.

© 2018 Jones Lang LaSalle IP, Inc. Date: 19/02/18 - fitzwilliam-house_190218_10728.pdf