

To Let

Office 26,750 sq ft NIA

Fortess Works, Fortess Grove, Camden, London, Greater London, NW5 2HD



Refurbished HQ opp

Summary

- Characterful 1920s former industrial warehouse refurbished to an exceptionally high standard throughout.
- Type: Office
- Tenure: To Let
- Size: 26,750 sq ft NIA
- Rent: Available on Request

Highlights

- Exceptional local amenities
- Excellent communication links
- Headquarters building
- Open-plan work space
- Impressive entrance
- Flexible working space
- Recently refurbished

Location

Kentish Town is an area of distinct character and culture, commonly featuring well preserved Victorian architecture. The centre hosts an array of independent shops, cafes and restaurants as well as creative working spaces such as studios and galleries.

The site is located just 350m north of Kentish Town station on Fortess Grove, a small street running east from Fortess Road.

Kentish Town is suitably connected via the Northern Line which runs from High Barnet to Morden via Bank or Charing Cross and via the Thameslink which runs from Luton to Brighton via City.

Camden Town is 1.6km to the south of the property (20 minutes walk)

Hampstead Heath is 1.2km to the north west of the property (18 minutes walk)

Specification

- Industrial look and feel with retention of many original features of the Victorian coachworks
- Raised floors
- Exposed ceiling mounted air conditioning
- Crittal windows
- Exposed masonry and steelworks with exposed track mounted light fittings
- Private gated courtyard

Terms

TBC

Viewings

Viewings are strictly to be appointed with agent JLL Unlimited

Amenities

- Air-Conditioning
- Showers
- Cycle spaces and lockers
- Male and female WCs
- Period features
- Recently refurbished
- Good Ceiling Height
- Double height reception
- Bike Storage

Energy Performance Rating

Available upon request.

Rent

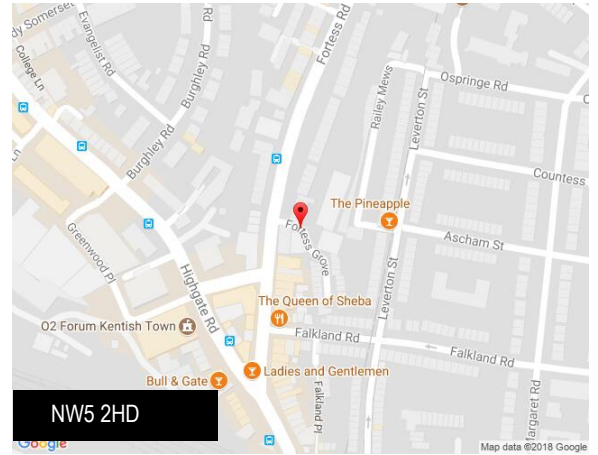
Available on Request

Business Rates

Available on Request

Service Charge

Available on Request



Viewing & Further Information

If you are interested and would like more information please get in touch.

Contacts

Michael Davis

t: +44 (0)207 399 5782

e: Michael.P.Davis@eu.jll.com

Toby Chapman

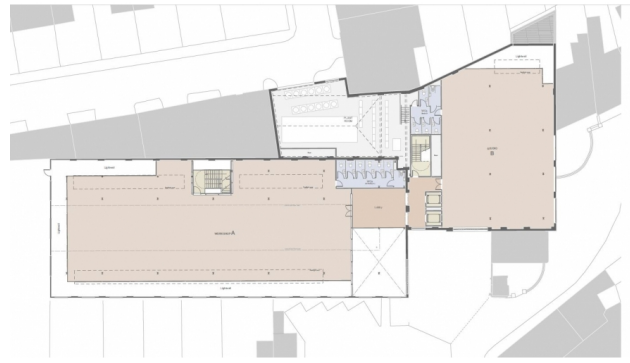
t: +44 (0)207 852 4222

e: Toby.Chapman@eu.jll.com

Alice Keogh

t: +44 (0)207 399 5823

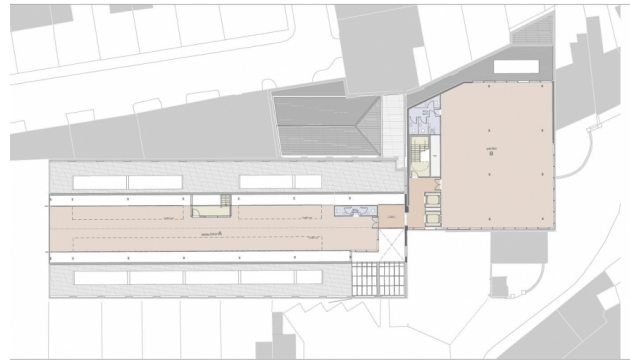
e: Alice.Keogh@eu.jll.com



FIRST FLOOR plan



GROUND FLOOR plan



SECOND FLOOR plan

