



PORT AND RESOURCE  
CENTRE

# Hunterston PARC

## Port and Resource Centre





**200 acres**  
of development land

# Hunterston PARC

## Port and Resource Centre

**Hunterston Port and Resource Centre (PARC) is an innovative and unique new concept for Scottish industry with energy at its heart.**

Located on the Ayrshire coast, Hunterston PARC will become a strategic energy hub, bringing together some of Scotland's most energy-intensive industries with low-cost, on-site power and heat generation to develop innovative, self-sustaining and cost-effective operating solutions.

- Low-cost on-site power and heat, ideal for energy-intensive businesses
- Just 40 minutes from Glasgow with road, rail and sea connections providing a range of logistic solutions
- Over 200 acres of development land, offering flexible plots of varying scale and opportunities to expand with business growth
- Flexible lease terms

“The west coast's deepest water port combines with rail and motorway connections and has in excess of 200 acres of development land to make this Scotland's natural choice for handling and processing our industrial resources.”

**Mark Whitworth**  
CEO, Peel Ports Group





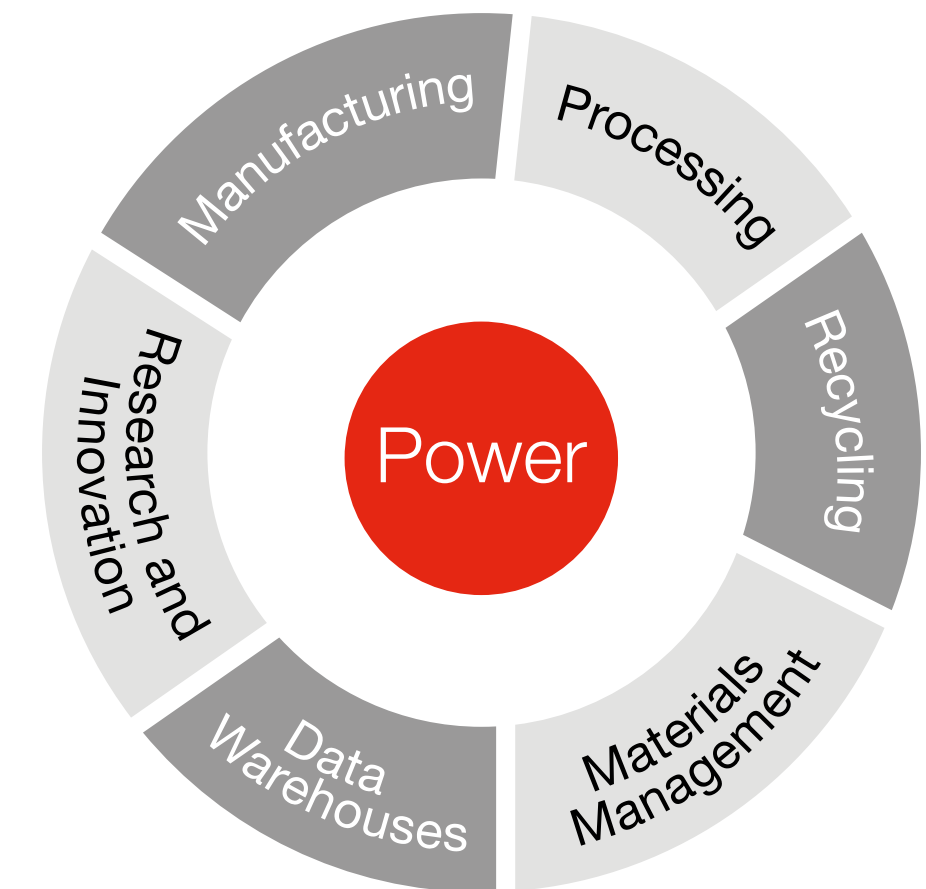


## Unrivalled potential

**Hunterston PARC offers a unique opportunity for manufacturers, power generators, recyclers, importers and exporters to come together for mutual benefit.**

By co-locating the supply chain Hunterston PARC will unlock efficiencies, reduce waste and become the natural choice for handling and processing Scotland's industrial resources - the 'Circular Economy' in action.

The site is a blank canvas for forward-thinking investors and can accommodate a range of uses from light to large-scale industrial facilities, recycling and materials management to data warehouses, research and innovation.





# Superb location & connectivity

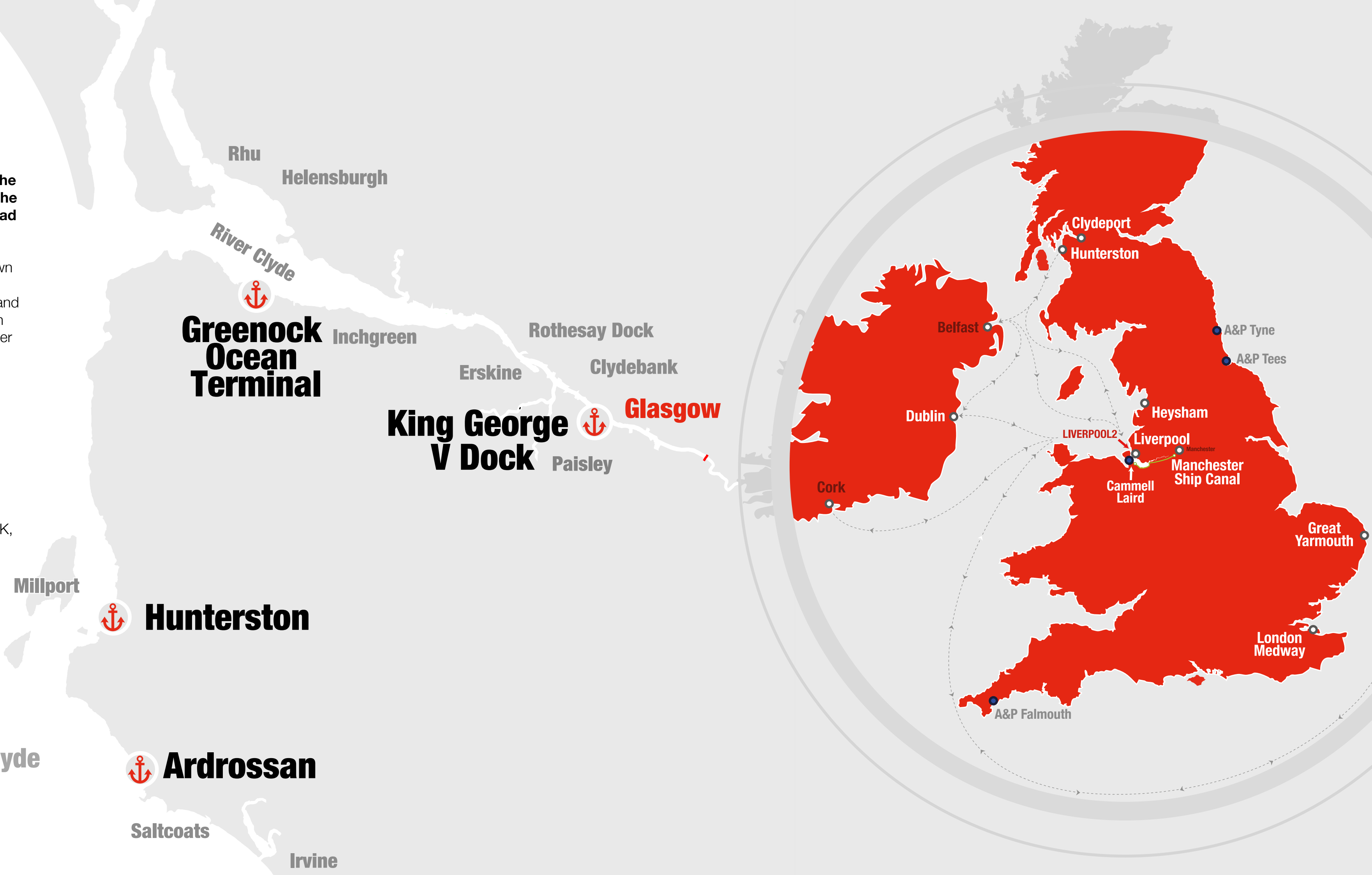
Hunterston PARC is the ideal place to serve the UK, Irish, European and American markets. The port offers ship-to-ship transfer, deep sea, road and rail connectivity.

Hunterston PARC has two rail terminals with its own rail link to the Largs/Glasgow railway line which, combined with onsite cargo handling capabilities and the deepwater draught make Hunterston PARC an ideal location to move freight cost-effectively all over the UK and Ireland.

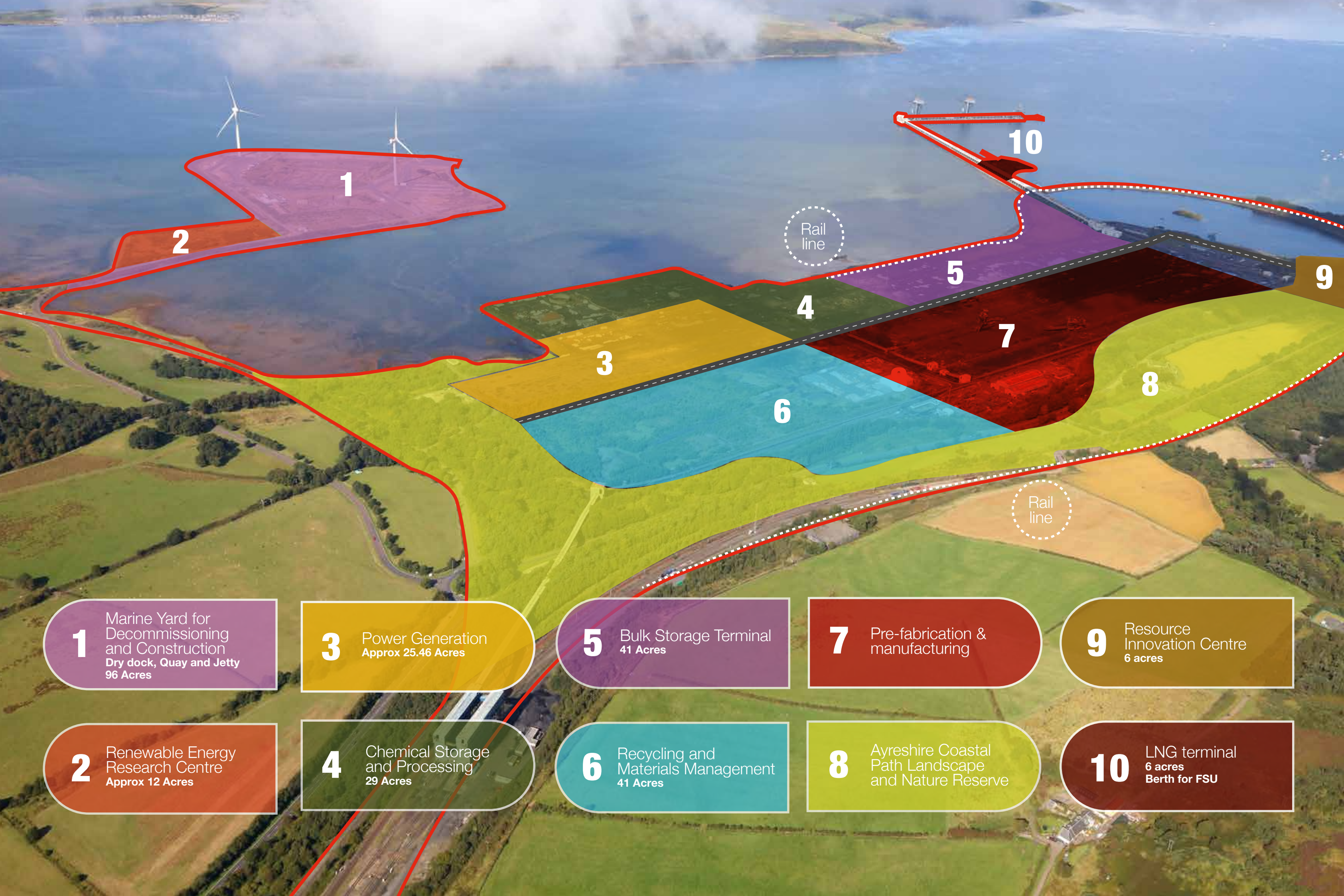
Working with Peel Ports at Hunterston PARC also provides a range of logistic solutions including trans-shipment to Ireland and the north west of England, with access through Dublin, Liverpool and the Manchester Ship Canal.

Additional links to global shipping routes are also available through Peel Ports' Liverpool2 enabling low-cost end-to-end distribution throughout the UK, Europe and the global market.

The site is accessed via the **A78**, within 25 miles of the **M8** and 20 miles from the **M77**.







## Site vision

**The ultimate vision for Hunterston PARC is to bring together multiple industrial operators with their supply chains to unlock efficiencies and reduce risk.**

The site offers numerous opportunities with plots of varying sizes and flexible lease terms. This is one example to illustrate the site vision but the possibilities are endless. Contact us to discuss how Hunterston PARC could be the ideal location for your next development project.

**1**

Marine Yard for Decommissioning and Construction  
Dry dock, Quay and Jetty  
96 Acres

**2**

Renewable Energy Research Centre  
Approx 12 Acres

**3**

Power Generation  
Approx 25.46 Acres

**4**

Chemical Storage and Processing  
29 Acres

**5**

Bulk Storage Terminal  
41 Acres

**6**

Recycling and Materials Management  
41 Acres

**7**

Pre-fabrication & manufacturing

**8**

Ayresshire Coastal Path Landscape and Nature Reserve

**9**

Resource Innovation Centre  
6 acres

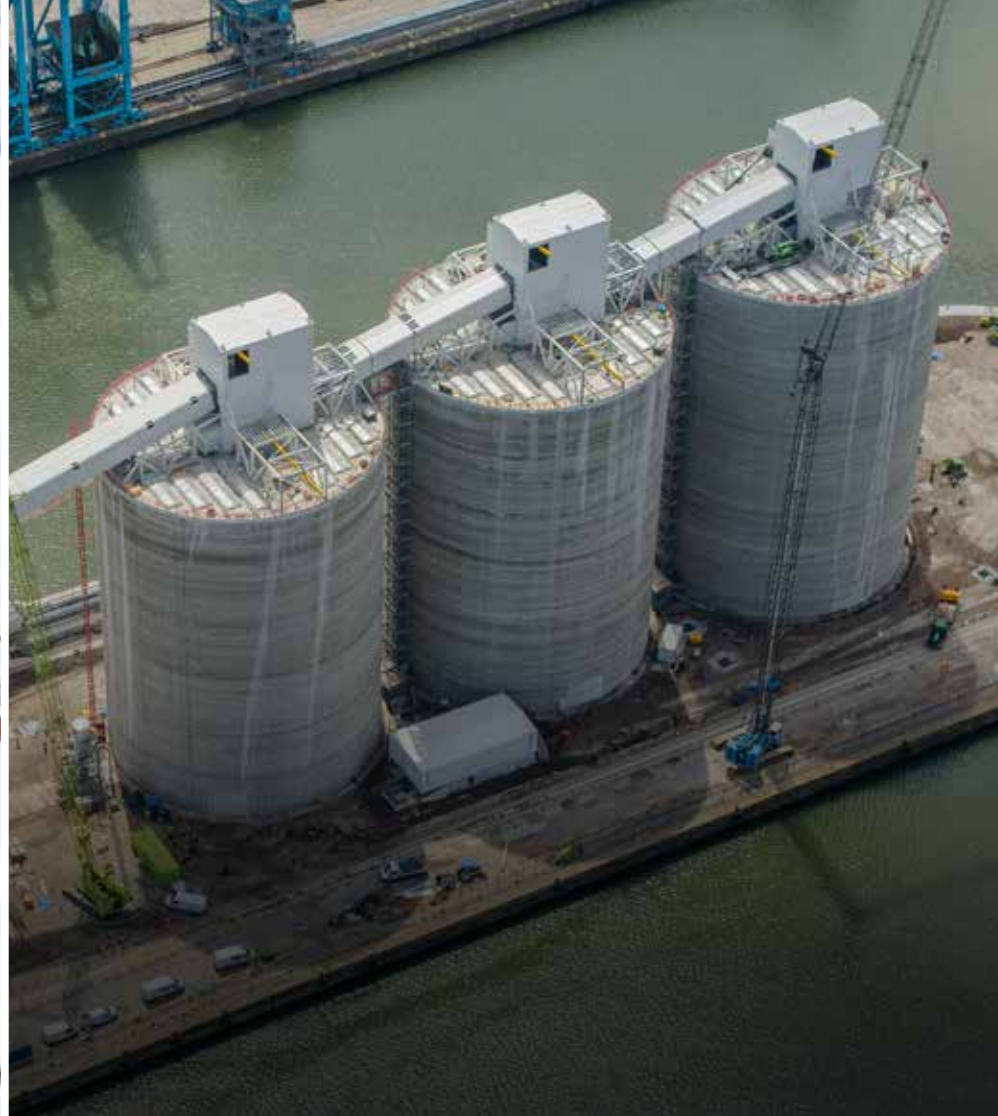
**10**

LNG terminal  
6 acres  
Berth for FSU









# Peel Ports Group

**Peel Ports Group is part of the Peel Group, a leading infrastructure, transport and real estate investor in the UK, with collective investments owned and under management of more than £5 billion.**

Peel Group has a track record of developing industrial properties to meet the business needs of a broad range of customers and sectors. These include:

- Multimodal logistics hubs and terminals for import and export
- Warehouses for port-centric storage and distribution
- Industrial estates
- Power generation including wind farms
- Automotive logistics centres

Peel Ports Group has an extensive track record of delivering some of the UK's premier industrial developments. Recent examples include a £100m biomass terminal at Peel Ports Liverpool, multi-site cement import hubs at Peel Ports Manchester and London Medway and a £150m tri-modal logistics hub, Port Salford.

Because of our access to an extensive land bank throughout the UK, our joined up approach and commodity experience, we are able to develop solutions that help customers overcome their current and future challenges.







**Andrew D McCracken**  
**Director - UK Industrial & Logistics JLL**  
T: +44 (0)141 567 6635  
M: +44 (0)7775 813538  
[Andrew.D.McCracken@eu.jll.com](mailto:Andrew.D.McCracken@eu.jll.com)

