

[jll.co.uk/property](http://jll.co.uk/property)



# To Let

**The Broadgate Tower, 20 Primrose Street, London,  
Greater London, EC2**

2,617 to 3,067 sq ft



## Location

The Broadgate Tower is located on the Broadgate Estate with both Liverpool Street and Shoreditch High Street a five minute walk away. The vibrant location benefits from a wealth of amenities with over 60 shops, bars and restaurants located in and around Broadgate Circle.

## Fitted out Accommodation Available

Forming part of the Broadgate Estate, the Broadgate Tower is an iconic 165 metre tall landmark tower designed by Skidmore, Owings & Merrill. It has a triple height reception leading to premium office space.

The Part 19th Floor comprises 2,617 sq. ft. The accommodation currently benefits from a good quality open plan fit out comprising of meeting rooms and break out area. A 450 sq. ft. comms room is also available.

## Accommodation

Available by way of a sublease for a term until June 2021.

Floor / Unit	Description	Size	Availability
19th	19 PT	2,617 sq ft	Available

## EPC

This property has been graded as 70 C.

## Rent

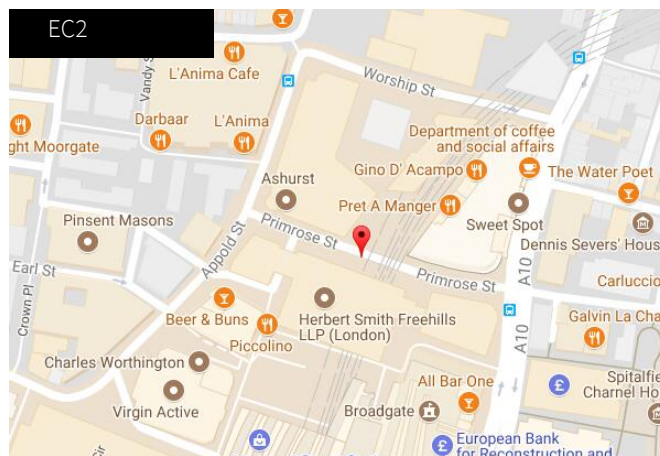
£70 per sq ft

## Business Rates

Rates Payable (2017/2018): £20.60 per sq ft

## Service Charge

£10.61 per sq ft



## Contacts

### Matthew Mycock

+44 (0)207 399 5862

matthew.mycock@eu.jll.com

### Helena Pryce

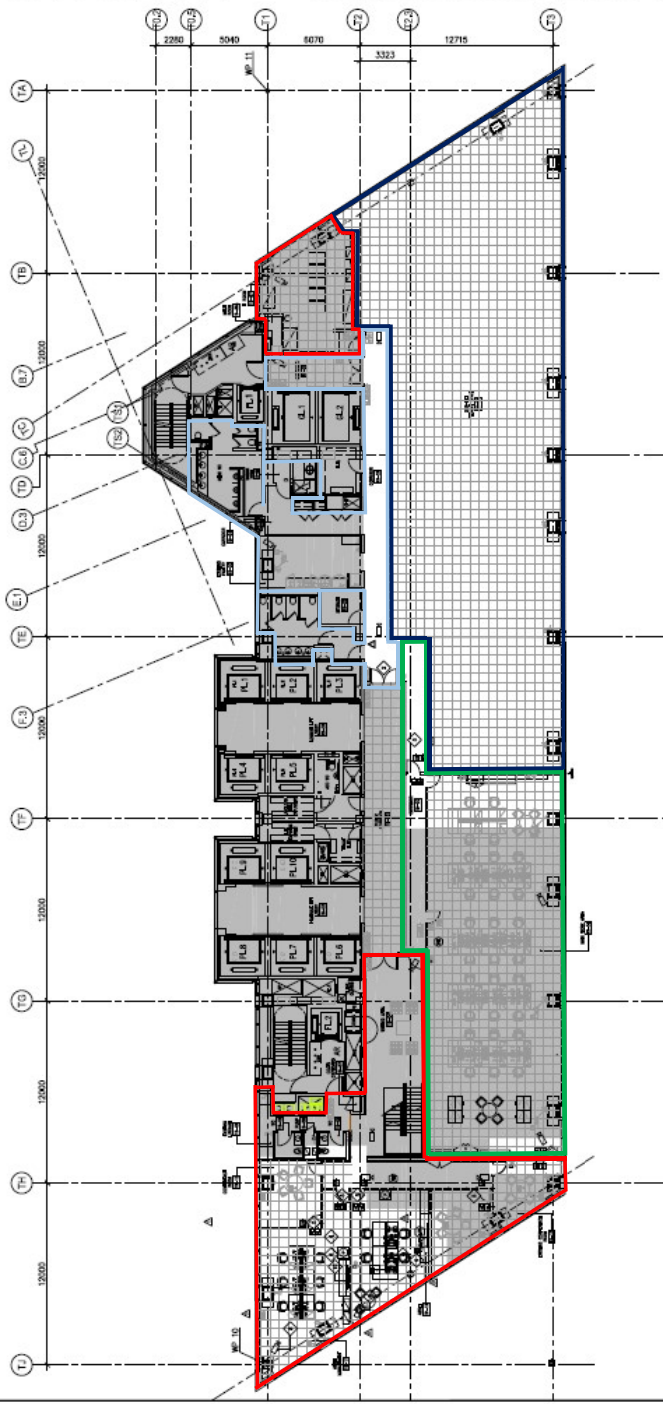
+44 (0)207 399 5842

Helena.Pryce@eu.jll.com

JLL for themselves and for the vendors or lessors of this property whose agents they are, give notice that:- a. the particulars are set out as a general outline only for guidance and do not constitute, nor constitute part of, an offer or contract; b. all descriptions, dimensions, references to condition and necessary permissions for use and occupation, and other details are believed to be correct, but any intending purchasers, tenants or third parties should not rely on them as statements or representations of fact but satisfy themselves that they are correct by inspection or otherwise; c. All properties are measured in accordance with the RICS property measurement, 1st Edition May 2015 (incorporating IPMS) unless designated NIA/GIA/GEA, in which case properties are measured in accordance with the RICS Code of Measuring Practice (6th Edition); d. Any images may be computer generated. Any photographs show only certain parts of the property as they appeared at the time they were taken.

For properties in Scotland:

e. This correspondence is expressly subject to completion of formal legal missives in accordance with Scots Law.



Itau BBA Intl.