

# To Let

## Office 3,173 sq ft NIA

40 Clifton Street, London, Greater London, EC2A 4DX



### Summary

- Fitted out accommodation ready to let
- Type: Office
- Tenure: To Let
- Size: 3,173 sq ft NIA
- Rent: £42.50 per sq ft

### Highlights

- Refurbished office accommodation
- Excellent communication links
- Exceptional local amenities
- Ready with fit out in situ

## Location

The building sits prominently on the corner of Clifton Street and Worship Street moments from the amenities of Shoreditch High Street and the Broadgate Estate. The location benefits from excellent transport links minutes from Liverpool Street, Old Street, Moorgate and Shoreditch High Street stations.

## Availability

Floor / Unit	Size	Availability
3rd	3,137 sq ft	Available
1st	2,521 sq ft	Under offer

## Specification

The Part 1st floor is offered 'plug and play' with good quality fit out, furniture and cabling in situ. The Pt 3rd floor is offered open plan and benefits from meeting rooms in situ.

- Newly decorated
- Plug and play
- Excellent natural light
- Kitchenette (1st) & meeting rooms
- VAV air conditioning
- Raised floor & suspended ceilings
- Passenger lifts
- Manned reception
- Key card access
- Car parking
- New showers, lockers and bike storage facilities

## Terms

A new lease(s) is available direct from the Landlord for a term by arrangement.

## Energy Performance Rating

This property has been graded as 240(G).

## Rent

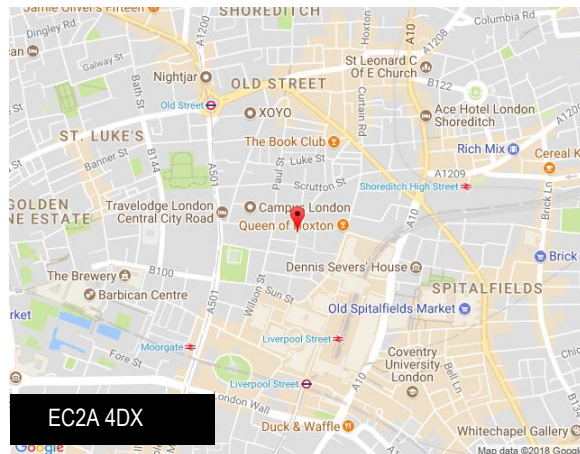
£42.50 per sq ft

## Business Rates

Rates Payable: £12 per sq ft

## Service Charge

£10.50 per sq ft



## Viewing & Further Information

If you are interested and would like more information please get in touch.

## Contacts

**Matthew Mycock**

t: +44 (0)207 399 5862

e: matthew.mycock@eu.jll.com

**Katie Sommer (nee O'Reilly)**

t: +44 (0)207 399 5125

e: katie.sommer@eu.jll.com

**Helena Pryce**

t: +44 (0)207 399 5842

e: Helena.Pryce@eu.jll.com

## Joint Agents

**Catherine Alexander (Gryphon Property Partners)**

t: 0203 440 9805

**Jamie Major (Gryphon Property Partners)**

t: 02034409809





[jll.co.uk/property](http://jll.co.uk/property)

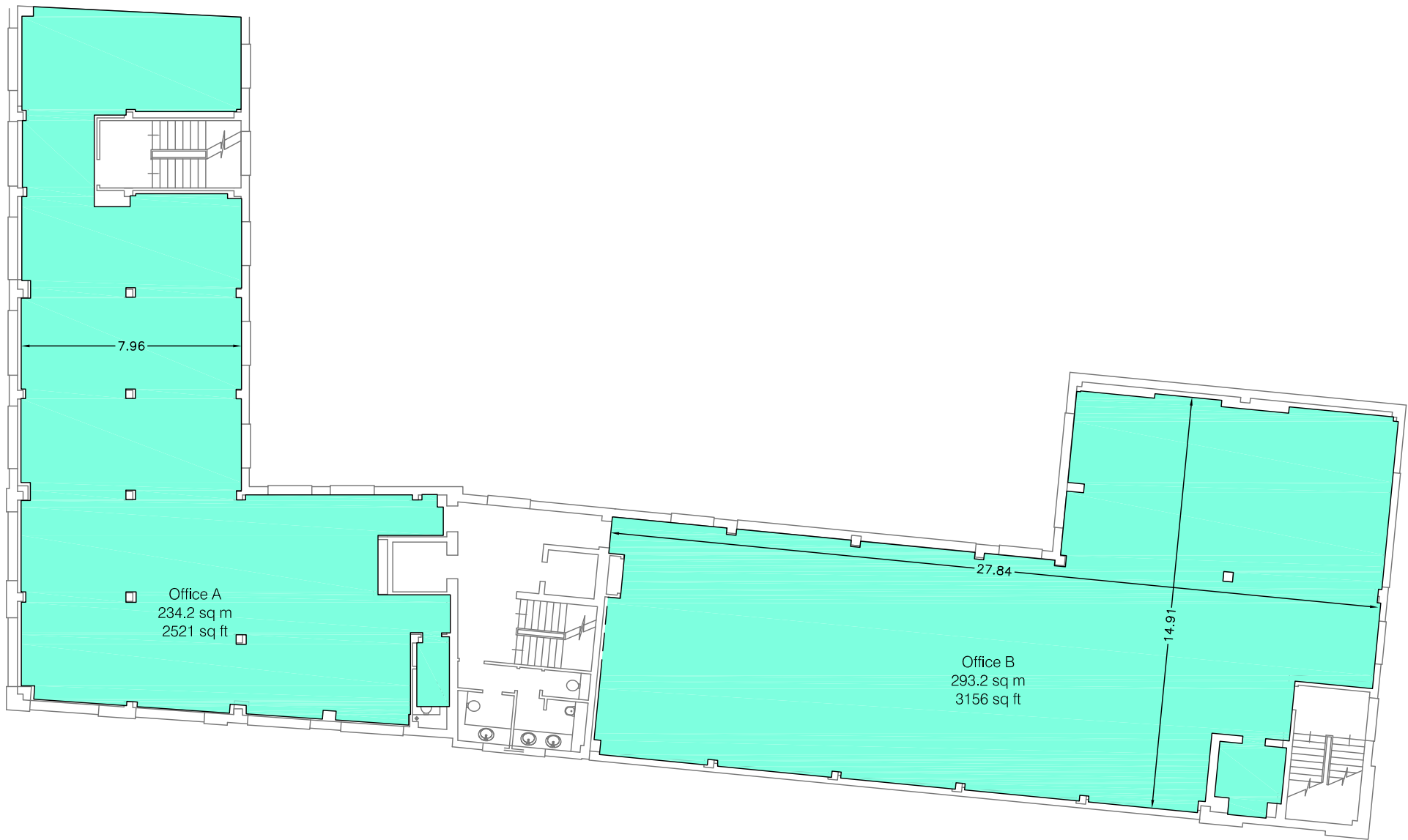
JLL for themselves and for the vendors or lessors of this property whose agents they are, give notice that:- a. the particulars are set out as a general outline only for guidance and do not constitute, nor constitute part of, an offer or contract; b. all descriptions, dimensions, references to condition and necessary permissions for use and occupation, and other details are believed to be correct, but any intending purchasers, tenants or third parties should not rely on them as statements or representations of fact but satisfy themselves that they are correct by inspection or otherwise; c. All properties are measured in accordance with the RICS property measurement, 1st Edition May 2015 (incorporating IPMS) unless designated NIA/GIA/GEA, in which case properties are measured in accordance with the RICS Code of Measuring Practice (6th Edition); d. Any images may be computer generated. Any photographs show only certain parts of the property as they appeared at the time they were taken.

© 2018 Jones Lang LaSalle IP, Inc. Date: 01/03/18 - 40-clifton-street\_010318\_7961.pdf





WORSHIP STREET



CLIFTON STREET

Condition of Site:

**Occupied**  
Vacant  
**Heavy Fit-Out**  
Shell & Core  
Under Construction  
Cat A Fit-Out

Notes:

This drawing complies with the 6th edition of the RICS code and indicates the extent of the areas quoted, produced to an accuracy commensurate with standard presentation scales. It is held in a scaled digital CAD format.

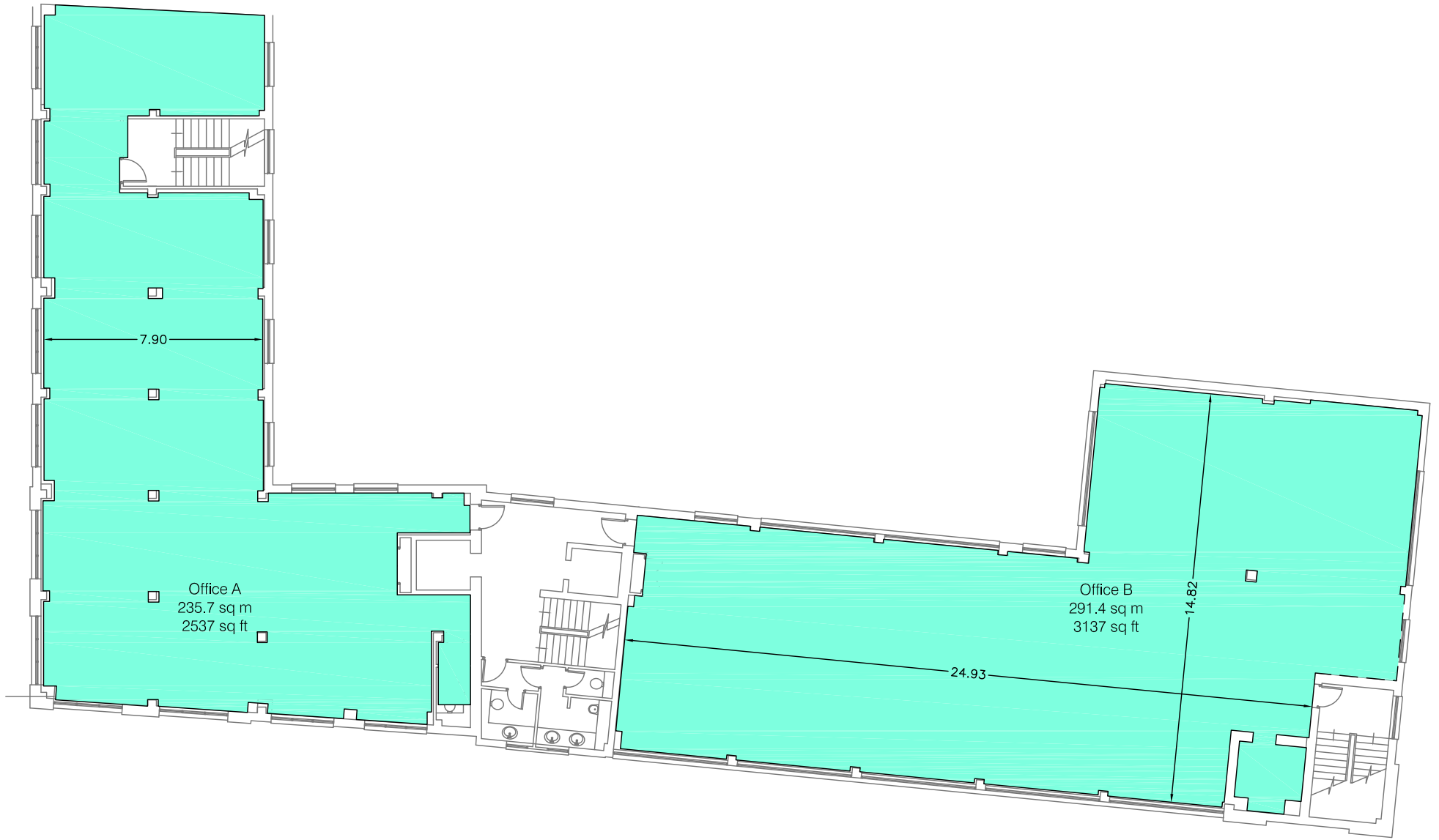
Dashed line denotes assumed wall line. Wall line inaccessible at the time of survey.

The background data shown in grey has been produced by a Third-Party and is shown for reference purposes only. This data may not coincide with the extents of the on-site measurements.

Revisions:

A - Original Issue (March 2015)

WORSHIP STREET



CLIFTON STREET

Condition of Site:

**Occupied**

Vacant

**Heavy Fit-Out**

Shell & Core

Under Construction

Cat A Fit-Out

Notes:

This drawing complies with the 6th edition of the RICS code and indicates the extent of the areas quoted, produced to an accuracy commensurate with standard presentation scales. It is held in a scaled digital CAD format.

Dashed line denotes assumed wall line. Wall line inaccessible at the time of survey.

The background data shown in grey has been produced by a Third-Party and is shown for reference purposes only. This data may not coincide with the extents of the on-site measurements.

Revisions:

A - Original Issue (March 2015)