

2-4 Falkirk, Glebe Street, Falkirk, FK1 1HU

WWW.ASDA.LIVE.JLL.COM - RETAIL UNIT TO LET

Summary

- On the instructions of Asda
- Population of 32,000 people

Location

Falkirk is one of the principal towns within the central belt of Scotland and is situated approximately 15 miles east of Glasgow and 24 miles west of Edinburgh.

The town has a residential population in excess of 32,000 people and serves an estimated catchment of 140,000 within a 6 mile radius.

The subject premises are situated in the heart of the town centre on Glebe Street.

Accommodation

The property comprises a two-storey building with retail/office accommodation at ground floor and additional office, staff and toilet facilities at first floor.

The premises provide the following approximate net internal floor areas:

Floor / Unit	Sq ft	Sq m
Ground	850	78.97
1st	745	69.21
Total	1,595	148.18

Tenure

The subjects are available on a new full repairing and insuring lease for a term to be agreed, subject to five-yearly upward only rent reviews.

Rent

£20,000 per annum exclusive of VAT.

exclusive of rates, service charge and VAT (if applicable).

Rates

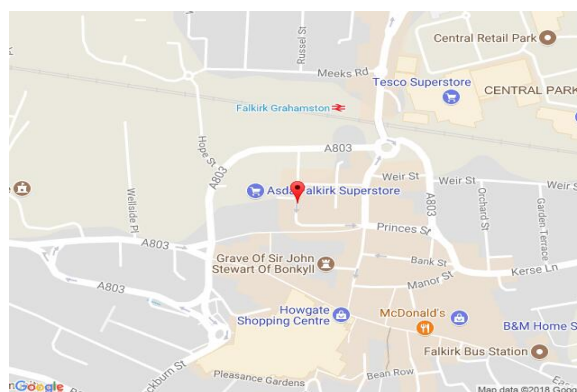
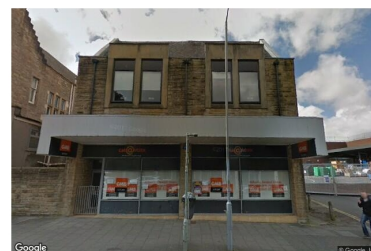
Rates Payable (2017/2018): £7,503 per annum

(based upon Rateable Value: £16,100 and UBR:)

TBC

EPC

Available upon request.



Viewing & Further Information

Viewing is strictly by appointment with:

William Game

t: +44 207 087 5722

e: William.Game@eu.jll.com

Joint Agents

Stephen Innes (Lambert Innes)

t: 0141 248 5878

e: stephen@lambertinnes.co.uk

Donald Syme (Syme Property Consultancy)

t: 0141 285 7943

e: donald@symeproperty.co.uk