



# CITY TOWER

LONDON

City Tower is one of the most recognised and well-established office addresses in central London. Four newly refurbished floors of 6,300 sq ft and a fitted out unit of 4,170 sq ft are now available, with dramatic panoramic views of the City.



View

Exceptional views from the building,  
looking out over the city.



Summary specification

- Flexible 6,300 sq ft tower floors
- 360° views across London
- Impressive 5 metre-high reception
- 4 pipe fan coil air conditioning
- Metal tile raised floors
- Plank metal tile suspended ceilings
- LG7 Zumtobel LED lighting
- 6 × individual WCs per floor
- 4 × 20 person passenger lifts
- Goods lift
- On-site building management
- 24 hour security
- Cycle centre and showers
- Tenants' business lounge
- EPC Rating C

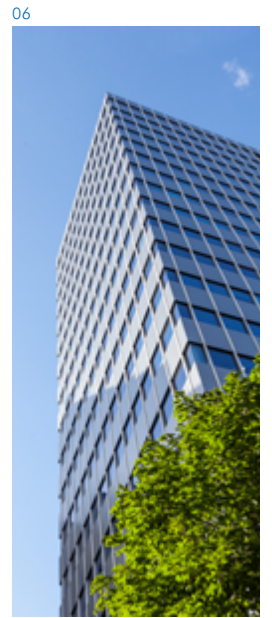
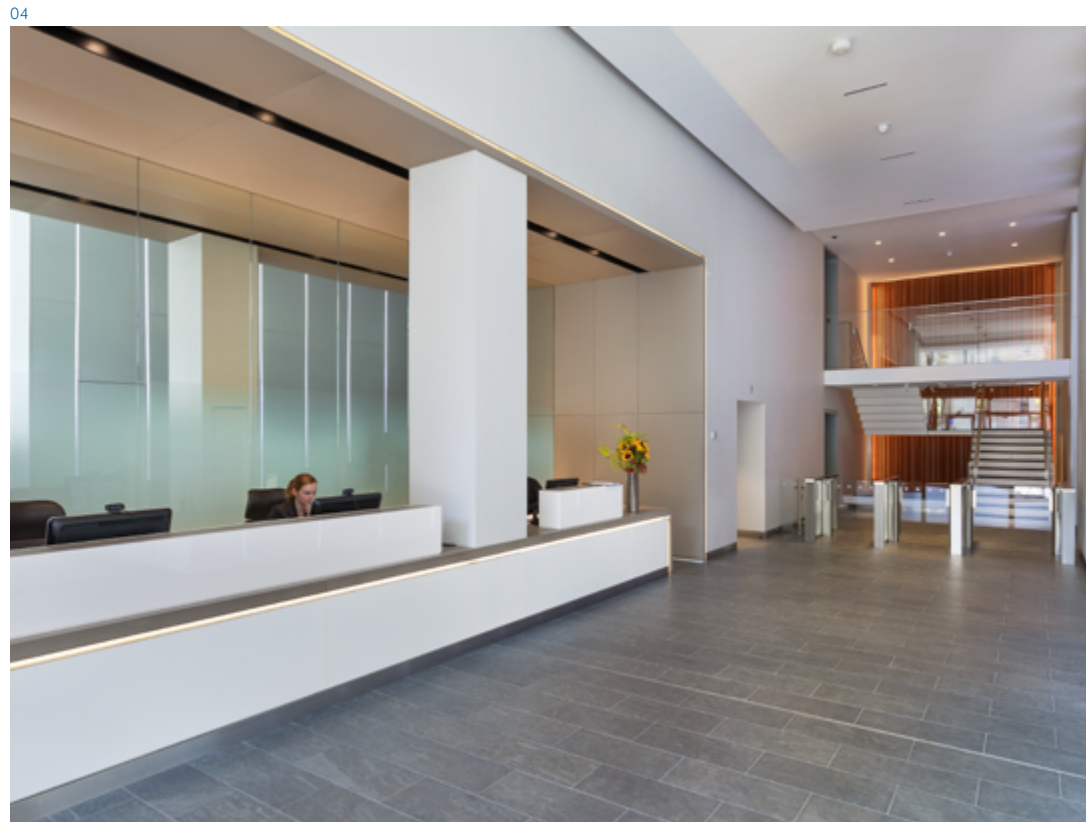
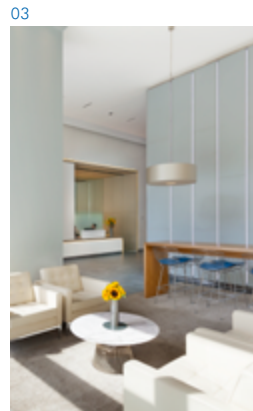


Office floors



Features

- 01 Entrance
- 02 Entrance
- 03 Reception
- 04 Reception
- 05 Business Lounge
- 06 Building exterior
- 07 Staircase
- 08 Showers
- 09 Cycle Centre
- 10 Business Lounge



You're in good company. Endorsed by 12 new occupiers since refurbishment and great local amenities.

CITY TOWER

4,170 SQ FT (PLUG AND PLAY)	21	AVAILABLE NOW
	20	MEWBURN ELLIS LLP
	19	SALMON
6,361 SQ FT	18	AVAILABLE NOW
6,363 SQ FT	17	AVAILABLE NOW
	16	TWO SIGMA INTERNATIONAL LTD
	15	TWO SIGMA INTERNATIONAL LTD WHITEHELM CAPITAL LTD
	14	IOGP
6,300 SQ FT	12	AVAILABLE NOW
	11	UNUM LTD GREENLAND INVESTMENT LTD
	10	BPP TECHNICAL SERVICES LTD
	9	BEAUMONT BC LTD
	8	BEAUMONT BC LTD
	7	ST JAMES'S PLACE WEALTH MANAGEMENT
6,300 SQ FT	6	AVAILABLE NOW
	5	BANK OF TAIWAN BEAWORTH LTD
	4	BEAUMONT BC LTD
	3	HABERMAN ILETT LLP
		TENANTS' BUSINESS LOUNGE

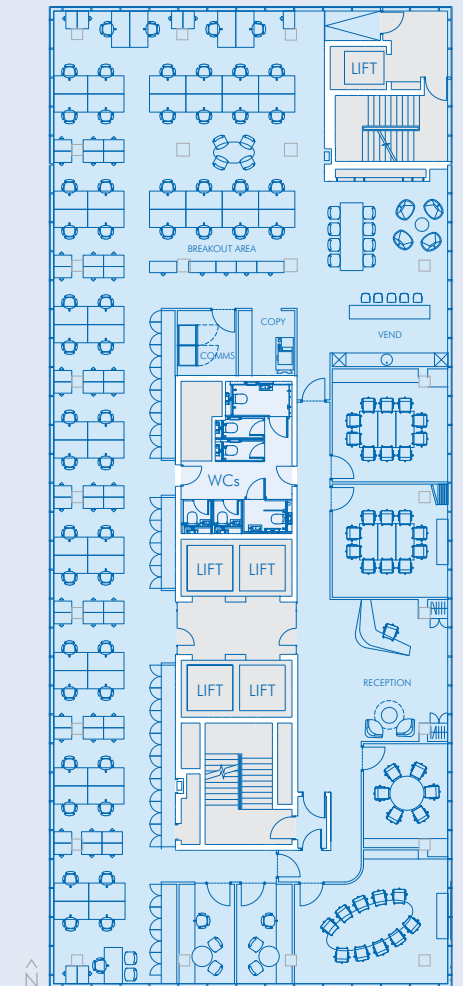
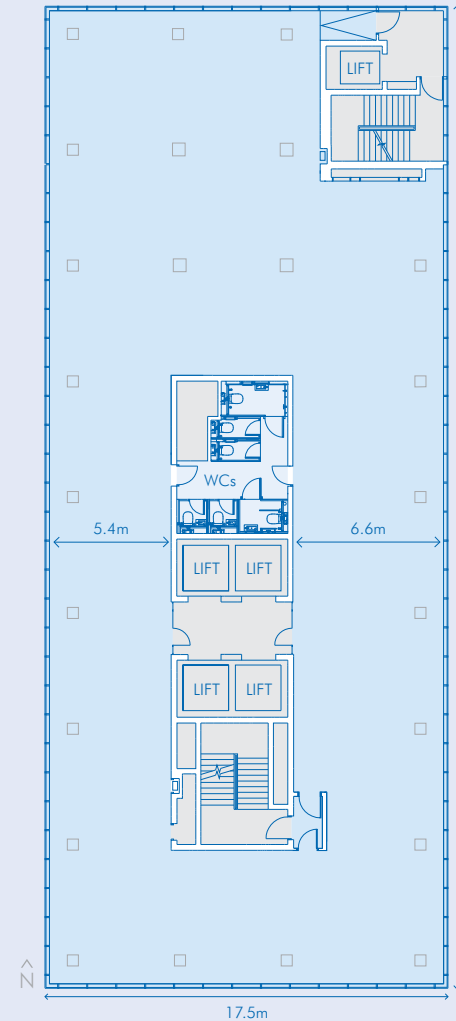
Indicative floor plans

TYPICAL FLOOR

Net internal area	586 sq m / 6300 sq ft
Occupancy density	1 per 10 sq m / 112 sq ft

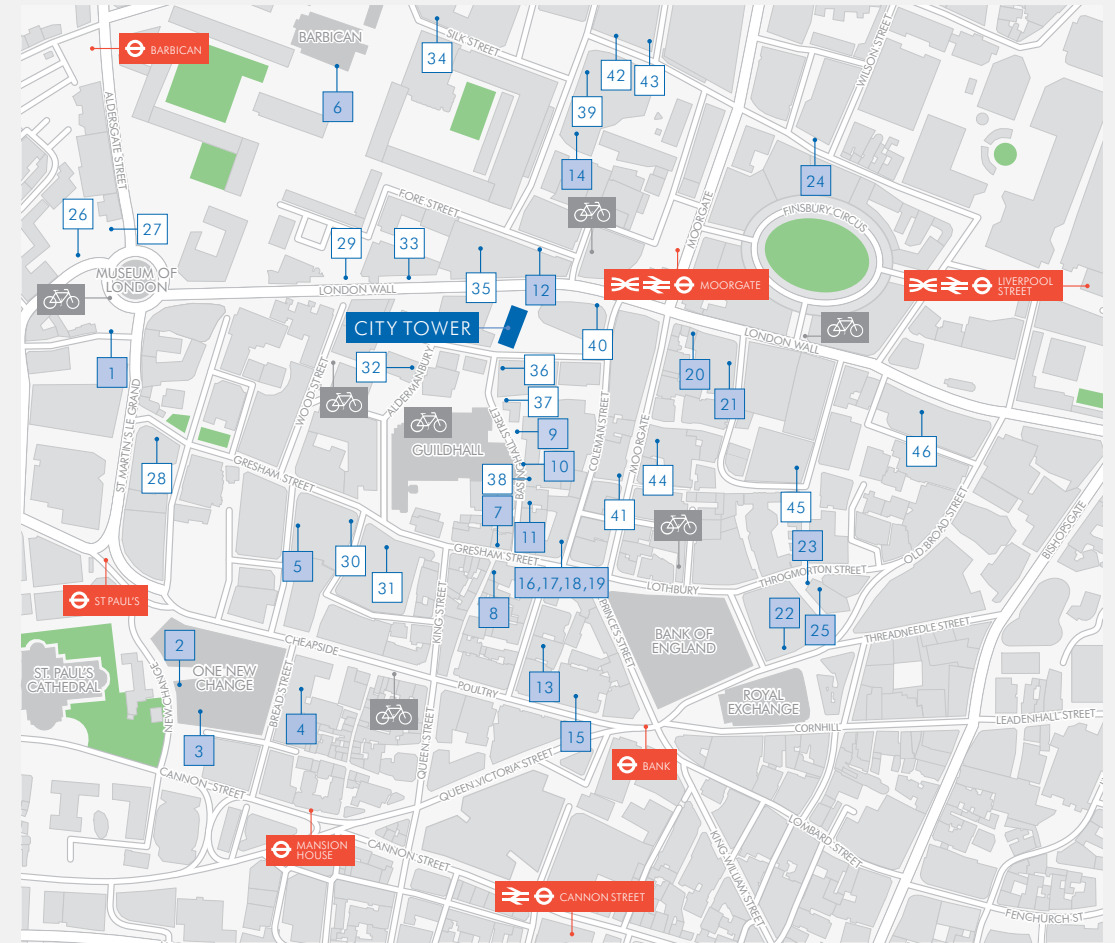
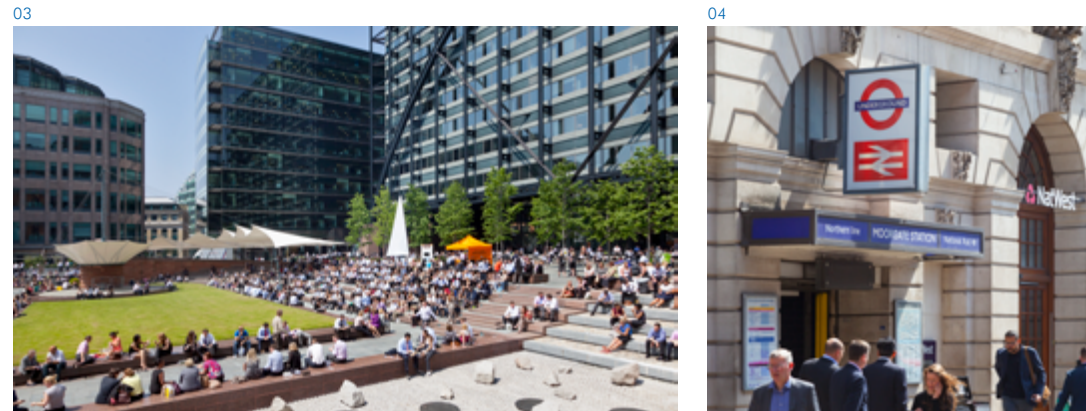
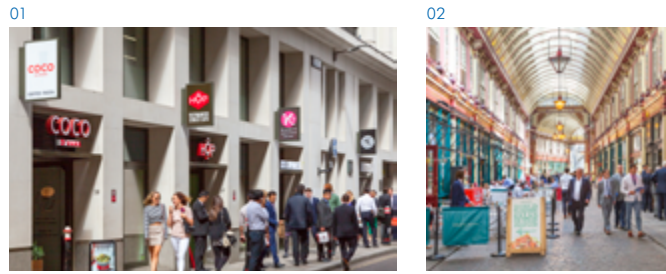
CORPORATE

Open plan workstations	53
Single offices × 2	2
Receptionist	1
Total headcount	56



City Tower is at the centre of the City, minutes from Bank, St Paul's and Moorgate stations and a short walk from Liverpool Street and Cannon Street stations. Crossrail arrives in 2018 improving connections further.

- 01 Coleman Street
- 02 Leadenhall Market
- 03 Exchange Square
- 04 Moorgate Station
- 05 Masons Avenue
- 06 The Ned
- 07 Finsbury Avenue



AMENITIES

- 1. Virgin Active Gym
- 2. Madison
- 3. Barbecoa
- 4. Burger & Lobster
- 5. Manicomio
- 6. Barbican Arts Centre
- 7. The Trading House
- 8. Anthologist
- 9. Davy's at Woolgate
- 10. Enoteca Da Luca
- 11. Hawksmoor
- 12. Pure Gym
- 13. Goodman
- 14. Nuffield Health Gym
- 15. The Ned
- 16. Hop
- 17. K10
- 18. Coco di Mama
- 19. Blacksheep Coffee
- 20. LA Fitness
- 21. Manon
- 22. Brasserie Blanc
- 23. Le Relais de Venise
- 24. South Place Hotel
- 25. Taylor St Baristas

OCCUPIERS

- 26. Phillips 66
- 27. FTI Consulting
- 28. Investec
- 29. Lloyd's
- 30. Standard Bank
- 31. Commerzbank
- 32. Hewlett Packard
- 33. Cleary Gottlieb
- 34. Linklaters
- 35. Schroders
- 36. Standard Chartered
- 37. Chicago Booth Business School
- 38. Nasdaq
- 39. Simmons & Simmons
- 40. Legal & General
- 41. Smith & Williamson
- 42. Macquarie Bank
- 43. Bank of Tokyo
- 44. Prudential
- 45. Regulation Authority
- 46. Blackrock
- Deutsche Bank

OWNERS

GREAT PORTLAND ESTATES PLC

Great Portland Estates is a FTSE 250 property investment and development company owning £3.1 billion of office, retail and residential space in central London. Our portfolio consists of 57 properties totalling 3.1 million sq ft, with a development pipeline totalling 2 million sq ft of potential new space. We aim to deliver superior returns to our shareholders by unlocking the often hidden potential in retail and office property in central London.

[gpe.co.uk](http://gpe.co.uk)



AGENTS

JLL

Jeremy Attfield / Katie Sommer  
020 7248 6040

CUSHMAN & WAKEFIELD

James Young / Emma Stratton  
020 3296 3000

SAVILLS

James Gillett / Alice Murray  
020 7499 8644



Misrepresentation Clause

The particulars contained in this brochure are believed to be correct, but cannot be guaranteed. All liability, in negligence or otherwise, for any loss arising from the use of these particulars is hereby excluded. This property is offered subject to contract. April 2018.

Design by dn&co.  
[dnco.com](http://dnco.com)



