

Mitre Building

6 Mitre Passage

High Quality Fit Out
Plug And Play
Offices To Let
3,870 to 14,525 sq ft

www.TheMitreBuilding.co.uk



Mitre Building

Completed in 2009, The Mitre Building comprises 125,000 sq ft of Grade A offices, located opposite North Greenwich Underground Station.

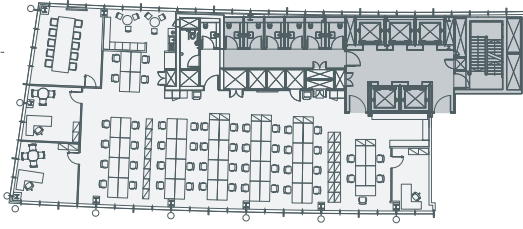
Specification

- New reception area with commissionaire
- Fitted out space with 1:8 sq m density
- Excellent natural light
- Chilled beam air conditioning
- Raised floors
- Metal tile suspended ceiling
- LG7 lighting
- Floor to ceiling 2.85m
- Five 13-person passenger lifts
- Shower and changing facilities
- Bike Storage
- 'Better Gym' on the ground floor
- BREEAM Excellent



Accommodation

5th



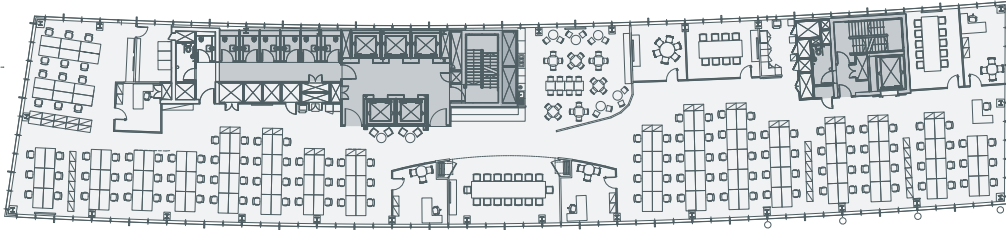
Floor sq ft

5th (Part) 3,870

4th 10,655

Total 14,525

4th



Location

6 Mitre Passage is an outstanding Grade A building comprising 125,000 sq ft of office space in the heart of Greenwich Peninsula.

The property is located in a new Riverside community around the Greenwich transport interchange. This is a distinctive and internationally recognised business address for over 24,000 people.

Lease Terms

The accommodation is available by way of a sublease (s) or assignment for a term until November 2030.

Transport

The Jubilee Line from North Greenwich provides excellent transport links. From North Greenwich:

Canary Wharf	2mins
London Bridge	8mins
Stratford	10mins
Bond Street	20mins

Elizabeth Line (Crossrail)

The Elizabeth Line is due to open in December 2018. Canary Wharf Station is one minute from the property via the Jubilee Line. This will transform connectivity across London, shortening journey times for commuters.

From Canary Wharf:

Liverpool Street Station	6mins
Farringdon Station	8mins
Bond Street	13mins
Heathrow Airport T5	48mins



For further information and viewing, please contact sole letting agent.

Simon Crotty
+44 (0)207 852 4230
simon.crotty@eu.jll.com

Hannah Ayles
+44 (0)207 399 5839
hannah.ayles@eu.jll.com

JLL for themselves and for the vendors or lessors of this property whose agents they are, give notice that:- a. the particulars are set out as a general outline only for guidance and do not constitute, nor constitute part of, an offer or contract; b. all descriptions, dimensions, references to condition and necessary permissions for use and occupation, and other details are believed to be correct, but any intending purchasers, tenants or third parties should not rely on them as statements or representations of fact but satisfy themselves that they are correct by inspection or otherwise; c. All properties are measured in accordance with the RICS property measurement, 1st Edition May 2015 (incorporating IPMS) unless designated NIA/GIA/GEA, in which case properties are measured in accordance with the RICS Code of Measuring Practice (6th Edition); d. Any images may be computer generated. Any photographs show only certain parts of the property as they appeared at the time they were taken.