

An aerial photograph of Century Park, a commercial estate in Altrincham. The image shows several multi-story brick office buildings with grey roofs, interspersed with parking lots filled with cars. The buildings are surrounded by green fields and trees. A prominent building in the foreground has a blue roof. The overall scene is a well-developed office park with ample parking and greenery.

Century Park

First Floor, Unit A, Atlantic Street,
Altrincham, WA14 5BJ

Refurbished Offices

TO LET

2,618SQFT (243.17SQM)

10 CAR PARKING SPACES





Location

Century Park is strategically located on the edge of Altrincham, accessed off the A56 via Atlantic Street. Transport connectivity including bus, rail and Metrolink are all close by and Century Park is less than 5 miles from Manchester Airport and just 10 minutes drive from Junction 5 of the M56 and Junction 7 of the M56.

The 280 bus runs from Altrincham interchange to Asda.

Description

Prestige office accommodation within a popular and well established business park providing the following features:

- Self contained first floor office suite
- Ladies, gents and disabled WC facilities
- Extensive on-site parking
- Landscaped grounds
- Nearby amenities include Waitrose, ASDA, McDonalds Altrincham Retail Park (Currys/Sports Direct etc), The Gym Group (New 24h gym), Pizza Hut, KFC and Dominos



Accommodation

Size – 2,618sqft (243.17sqm)

The office has been fully refurbished to include:

- Suspended ceiling
- Recessed lighting
- Perimeter trunking
- New ladies, gents & disabled WCs
- Kitchen point
- Upgraded common area
- Carpeting throughout

Terms

The accommodation is available by way of a new lease on fully repairing and insuring terms for a term of years to be agreed. Details of occupational costs and prices are available upon request.

VAT

All rentals quoted are exclusive of VAT.

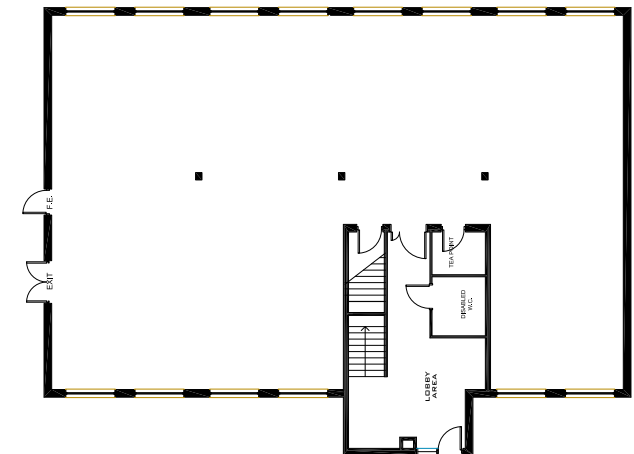
Service charge

Occupiers are liable for a fair proportion of the costs incurred by the landlord whilst managing and maintaining Century Park's common areas.

EPC

Unit A Anchorage Court B(50)

Floor Plan



Further Information

For further information please contact the joint letting agents on:



Daniel Lee

Tel: 0161 927 7824

Daniel@r-p-s.co.uk



Richard Wharton

Tel: 0161 238 6227

Mob: 07970 938698

Richard.Wharton@eu.jll.com

Particulars: These particulars are not an offer or contract, nor part of one. You should not rely on statements by M7 Real Estate LLP or any subsidiary or affiliate company ("M7) or any third party agent ("Agent") related to the information in the particulars or by word of mouth or in writing ("Information") as being factually accurate about the property, its condition, its value or its ownership structure. Neither M7 or the Agent nor any joint agent has any authority to make any representations about the property, and accordingly any information given is entirely without responsibility on the part of M7, the Agent, any joint agents, seller(s) or lessor(s). 2. The photographs show only certain parts of the property as they appeared at the time they were taken. Areas, measurements and distances given are approximate only. 3. Any reference to alterations to, or use of, any part of the property does not mean that any necessary planning, building regulations or other consent has been obtained. A buyer or lessee must find out by inspection or in other ways that these matters have been properly dealt with and that all information is correct. 4. VAT: Any guide prices quoted or discussed are exclusive of VAT. The VAT position relating to the property may change without notice.

August 2017.