



BOLD WORKSPACE
AVAILABLE NOW





2

Availability

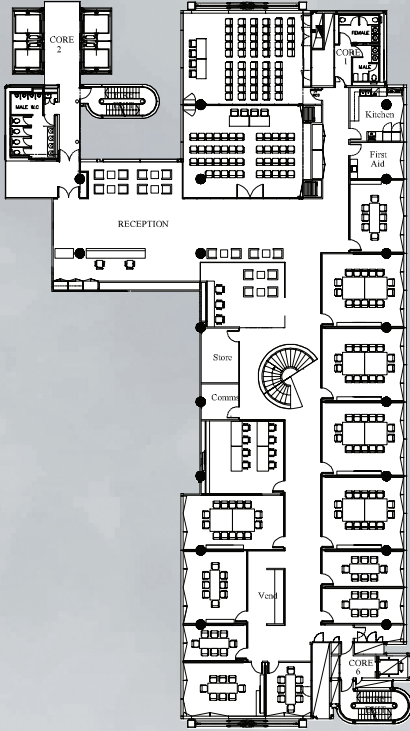
6th floor - 11,099 sq ft

7th floor - 21,897 sq ft



Subject to final measurement

6th Floor



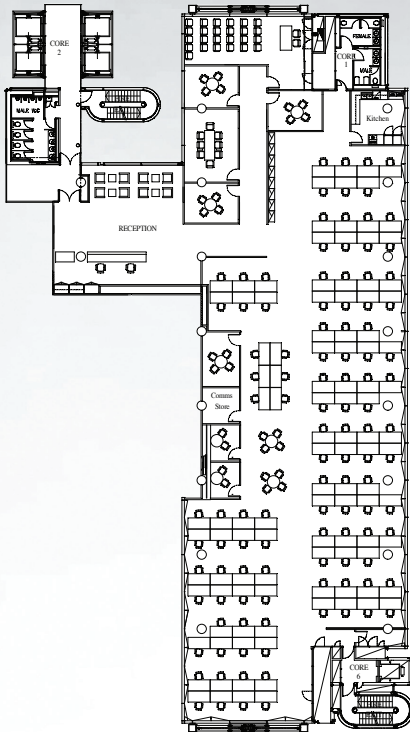
7th Floor



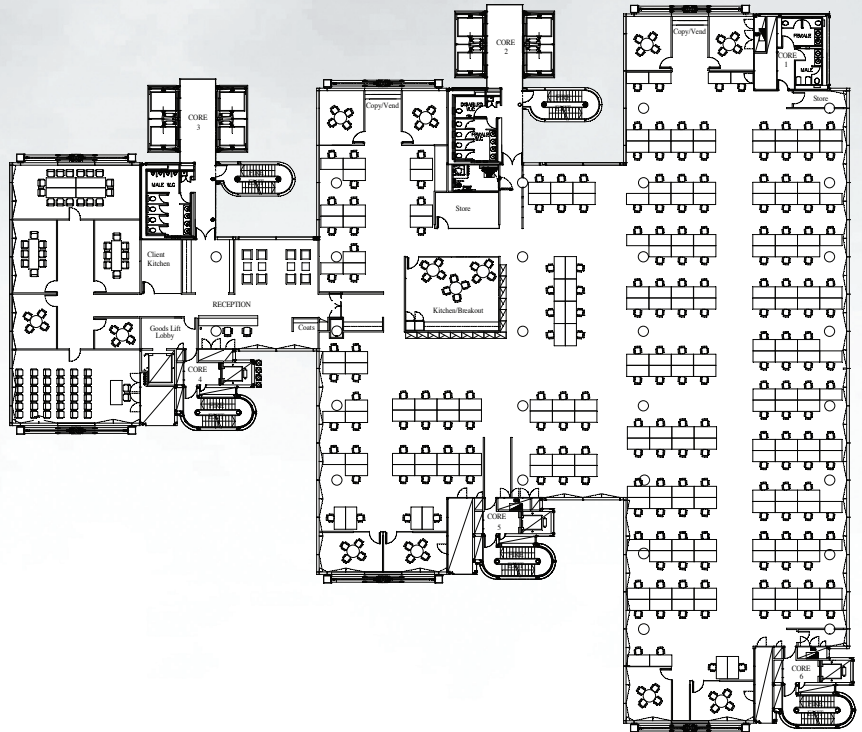
Existing Condition

3

6th Floor

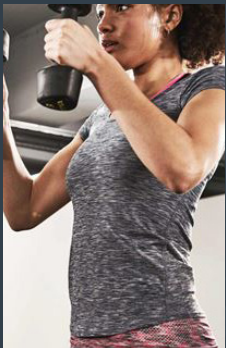
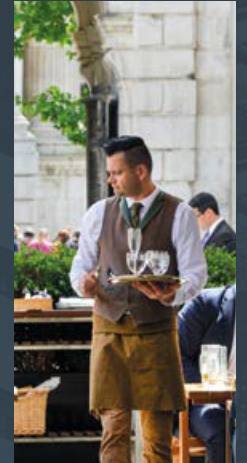
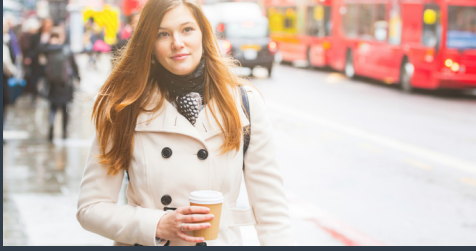


7th Floor



Space Plans

Nearby Amenities



Easily accessible amenities
and public transport





Connections

 St Paul's	3 mins
 Barbican	6 mins
 Bank	7 mins
 Moorgate	8 mins
 Farringdon	10 mins

Occupiers & Amenities

LOCAL OCCUPIERS

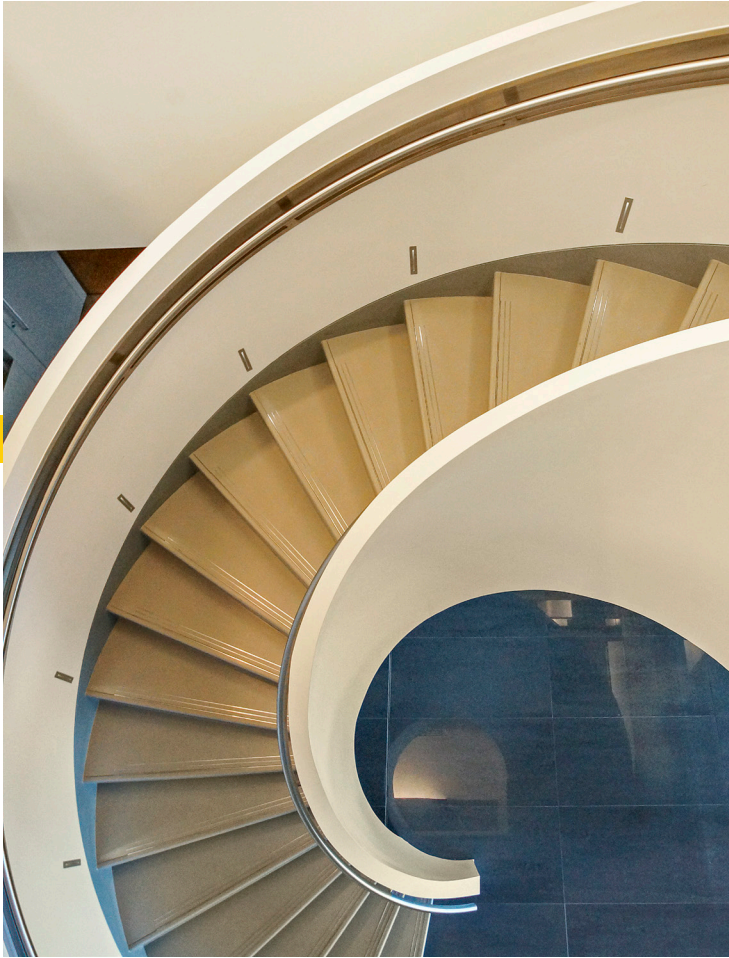
1. Schrodgers Plc
2. Investec
3. Osborne Clarke
4. Legal & General
5. Standard Chartered
6. Eversheds Sutherland
7. Alpha Systems
8. UniCredit

RESTAURANTS & BARS

1. Manicomio
2. Hawksmoor
3. The Anthologist
4. Barbecoa
5. Coq d'Argent
6. Club Gascon
7. The Trading House
8. The Cellar

HOTELS & GYMS

1. Virgin Active
2. Pure Gym
3. Fitness First
4. Nuffield Health
5. The Ned
6. Grange Hotel
7. Apex
8. Club Quarters





7



INNOVATIVE WORKSPACE NOW AVAILABLE

Contact

Jack Beeby

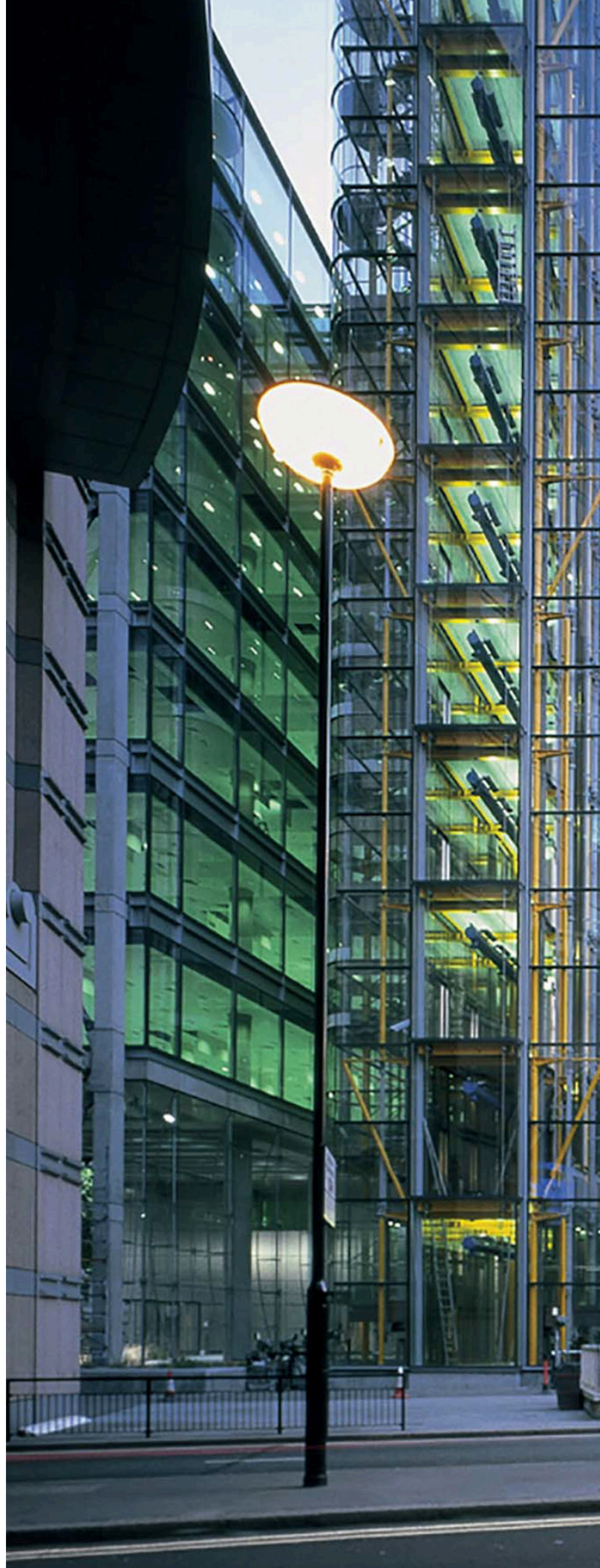
+44 (0) 207 852 4063

jack.beeby2eu.jll.com

Jason Collier

+44 (0) 207 399 5514

jason.collier@eu.jll.com



Disclaimer: Although information has been obtained from sources deemed reliable, Owner, Jones Lang LaSalle, and/or their representatives, brokers or agents make no guarantees as to the accuracy of the information contained herein, and offer the Property without express or implied warranties of any kind. The Property may be withdrawn without notice.

© 2018. Jones Lang LaSalle. All rights reserved.