

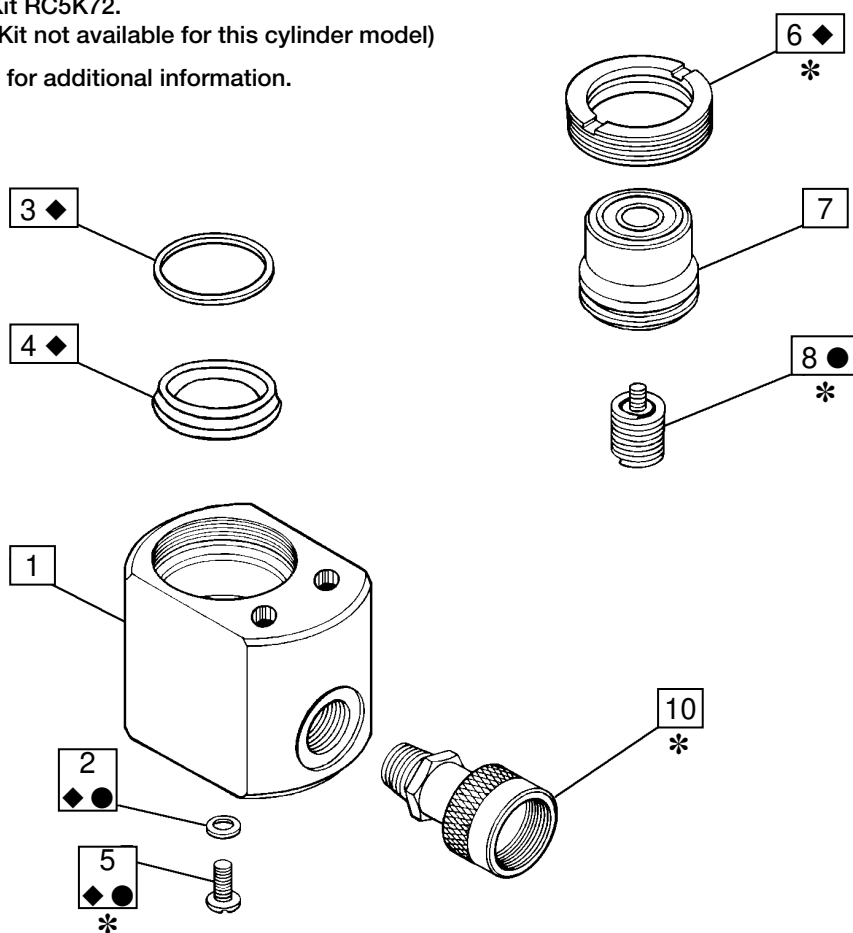
Repair Parts Sheet

RC-50 Hydraulic Cylinder (RC-Duo Series and Previous RC Series)

Repair Parts Sheet	Revision	Revision Date	Product Code Beginning
L1340	Rev. D	10/2010	O, A

- = Spring Kit RC5K30.
 ◆ = Premium Repair Kit RC5K72.
 (Standard Repair Kit not available for this cylinder model)
 * = See Notes section for additional information.

Fig. 1, Cylinder Assembly



**Note: See Page 2
for parts list.**

(*) Notes	
Item	Torque / notes
5	4.5 Nm, 45 In - Lbs
6	IMPORTANT: Stake mark (used on older models) must be removed prior to disassembly. Failure to remove stake mark may result in damage to cylinder components. Note: Newer cylinders are secured with Loctite 222 and have no stake mark.
6	Use Loctite 222 on threads. 7.9 - 10.2 Nm, 70 - 90 In - Lbs
8	Firmly tighten screw to assure contact with the plunger. 5.4 - 6.8 Nm, 4 - 6 Ft - Lbs
10	Use Loctite 545 or Teflon tape on threads. 54 - 81 Nm, 40 - 60 Ft - Lbs


Repair Parts List, Figure 1			L1340
Item	Description	Qty.	Part Number
1	Base	1	(not available)
2	Copper Gasket	1	◆ ●
3	Wiper Ring	1	◆
4	GT Ring	1	◆
5	Screw, #10-32 UNF x .50 inch Lg.	1	◆ ●
6	Stop Ring	1	◆
7	Plunger	1	(not available)
8	Spring Assembly	1	●
N/S	Dust Cap	1	◆
10	Coupler	1	CR-400
N/S	O-Ring, Coupler	1	◆
N/S	Enerpac Decal (RC-Duo)	1	◆
N/S	Enerpac Decal	1	◆
N/S	Warning Decal	1	◆
◆	Repair Kit, Premium	-	RC5K72
●	Spring Kit	-	RC5K30
Notes: Standard Repair Kit not available for this cylinder model (Premium only). N/S = Item not shown.			

Cylinders with Viton components only: Order Repair Kit RC50KV for "O" date codes and Repair Kit RC50KVS1 for "A" date codes. Both kits include Viton components for items 3 and 4. Standard components are used in other locations.



**To maintain your warranty,
have your products inspected and repaired
by an authorised Enerpac Service Centre**
www.enerpac.com

ADDENDUM - FOR ENERPAC INTERNAL USE ONLY

 ENERPAC POWERFUL SOLUTIONS. GLOBAL FORCE.	Repair Parts Sheet
	RC-50 Hydraulic Cylinder (RC-Duo Series and Previous RC Series)

Repair Parts Sheet	Revision	Revision Date	Product Code Beginning
L1340	Rev. D	10/2010	O, A

Repair Parts List, Figure 1			L1340
Item	Description	Qty.	Part Number
1	Base	1	(not available)
2	Copper Gasket ♦ ●	1	W22237
3	Wiper Ring ♦	1	CR220041
4	GT Ring ♦	1	B1212513
5	Screw, #10-32 UNF x .50 inch Lg. ♦ ●	1	B2506028
6	Stop Ring ♦	1	CR34044
7	Plunger	1	CR36040
8	Spring Assembly ●	1	DA4024950
N/S	Dust Cap ♦	1	DD1782020
10	Coupler	1	CR-400
N/S	O-Ring, Coupler ♦	1	B1116803
N/S	Enerpac Decal (RC-Duo) ♦	1	DD2213026
N/S	Enerpac Decal ♦	1	G428026
N/S	Warning Decal ♦	1	CH272026
♦	Repair Kit, Premium	-	RC5K72
●	Spring Kit	-	RC5K30
Notes: Standard Repair Kit not available for this cylinder model (Premium only). N/S = Item not shown.			

Cylinders with Viton components only: Order Repair Kit RC50KV for "O" date codes and Repair Kit RC50KVS1 for "A" date codes. Both kits include Viton components for items 3 and 4. Standard components are used in other locations.

NOTES:

[illegible]