

▼ One leg of ML40 Mini-Lift Hydraulic Gantry



- Compact design for use in areas with limited space
- Self-contained hydraulics with synchronized lifting for enhanced safety
- Powered travel, under load, standard on all models for ultimate utilization
- Three-stage, double-acting cylinder provides extended lifting capacity
- Easy-to-use handheld pendant control can operate four legs simultaneously
- Compatible with standard Enerpac gantry accessories
- Operates on 115, 230 VAC 1-phase or 380-415 VAC 3-phase power (1 circuit per leg)
- ASME B30.1 compliant and load tested under witness of Lloyd's Register.

Lift Heavy Machinery Safely

Portable design with precision control



Header Beams

Sold in pairs and includes lifting points and fork pockets for easy positioning on gantry towers.

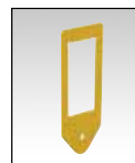
Description	Model Number
19.7 ft length	HBH6
26.2 ft length	HBH8



Skid Tracks

Skid tracks used for leveling and load distribution to reduce ground bearing pressure. Available in two standard lengths.

Description	Model Number
9.8 ft length	GST100-3
19.4 ft length	GST100-6



Lifting Anchors

Designed to transfer the load to the top of the header beam. Can accommodate a 250-ton shackle or attach directly to the lifted load.

▼ Moving and positioning a 25 tons boiler using the ML40 Mini-Lift Gantry.



▼ SBL1100 gantry offloading a large generator for installation in a power plant.



Higher Capacities SL and SBL-Series Hydraulic Gantries

When the ML-Series Mini Gantry isn't quite enough capacity or height for your application,

Enerpac offers a full range of safe-to-operate full featured telescopic hydraulic gantries, up to 1178 tons capacity and lifting heights up to 39 feet. Contact Enerpac for more details.

Mini-Lift Hydraulic Gantry



ML-Series, Mini-Lift Gantry

The cost-effective, compact ML40 Mini-Lift Hydraulic Gantry System, with wireless controls offers several key features:

Safety:

Stroke synchronization ensures a level lift regardless of load distribution. PLC-controlled lifting using feedback from a stroke encoder maintains even height on all legs and will stop the lift if necessary to prevent issues.

Capacity:

400 kN lifting capacity at full extended lift height. Even with its compact size, the ML40 can lift full capacity to full height of 18 feet, making it the most versatile portable gantry in the market.

Compact:

Fits through standard doorway and is easily moved and set up. The ML40 gantry can be moved through the tightest spaces imaginable in all industrial settings. Easy to push, pull and maneuver, the ML40 can get into spaces that no other gantry can.

ML Series



Capacity (with 4 legs):

45 tons

Maximum Lifting Height:

18 feet



Wireless Pendant

- Stroke measurement and closed loop synchronization ensure level lifting and lowering
- Integrated 1.8 inch color display provides load and stroke information for all four lift points.



Mini-Lift Gantry Transport Frame

Galvanized steel transport frames to allow shipment of mini gantry legs via standard truck lines. Two legs mount on each frame

which includes storage for controls and accessories.

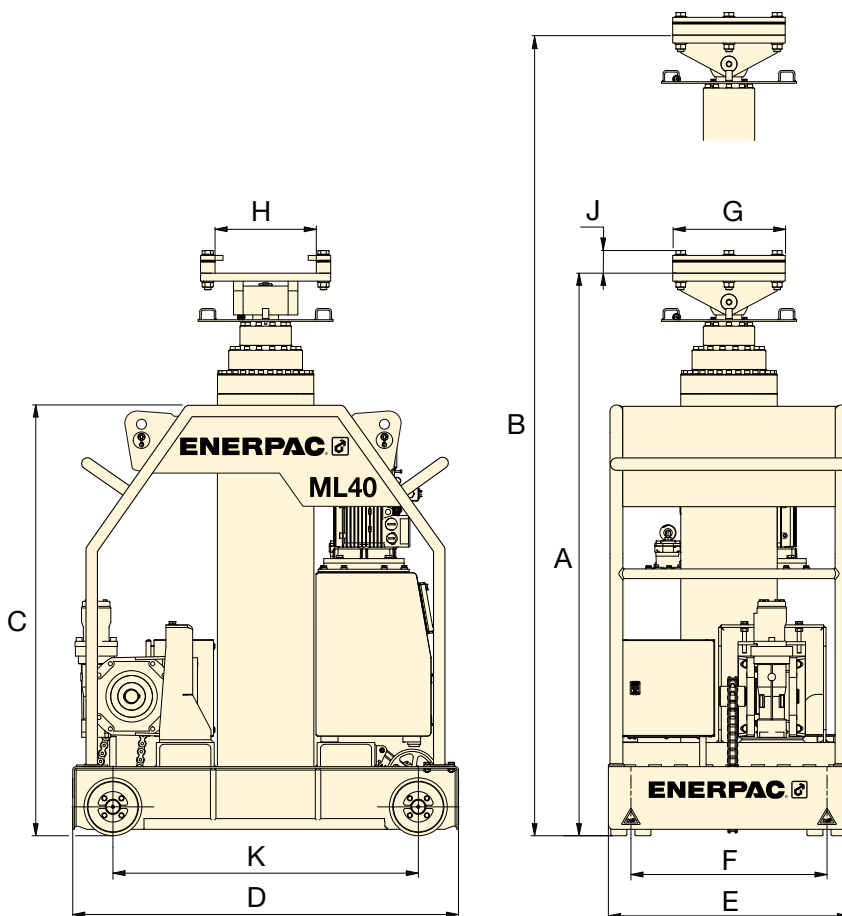
Description	Model Number
Set of two frames	ML40TF



Operating Voltages

ML40 is available in three voltages. 1 circuit per leg.

Voltage	Model Number
115 V, 1 phase, 16 A	ML40B
208-240 V, 1 phase, 8 A	ML40E
380-415 V, 3 phase, 2 A	ML40W



Max. Capacity *	Model Number (4 legs)	Retracted Height A (ft)	Stage 1		Stage 2		Stage 3		Base Height C (in)	Base Length D (in)	Base Width E (in)	Track Gauge F (in)	Beam Plate			Wheel Base K (in)	Wheel ** (lbs)
			Max. Height B (ft)	Max. Capacity *	Max. Height B (ft)	Max. Capacity *	Max. Height B (ft)	Max. Capacity *					Length G (in)	Width H (in)	Height J (in)		
45 (tons)	ML40	6.23	9.84	45	13.78	45	18.00	45	54.75	47.25	29.50	24.00	13.78	12.40	2.80	37.40	2970

* Capacity with 4 legs.

** Weight per leg including oil.