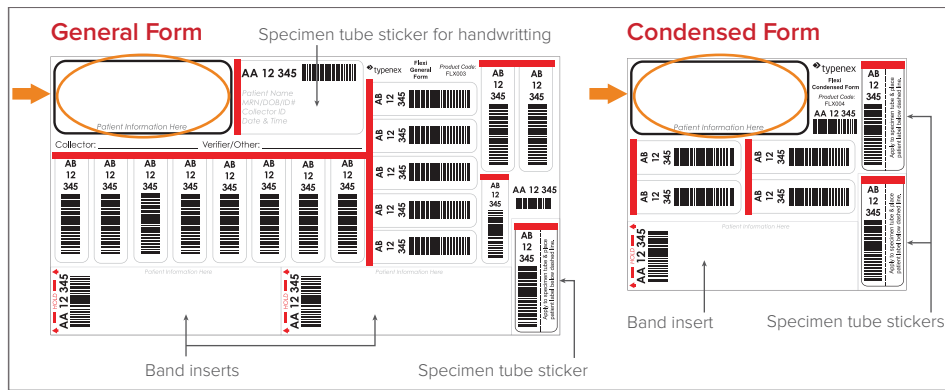


Flexi 2.1™ | Band and Form

The Flexi 2.1™ | Band and Form features a soft and comfortable band, and is designed to seal out water for up to 7 days—including daily showering and during outpatient use.



1. **VERIFY** the patient's identity.

USING either the General or Condensed Form, apply the patient's information to the top left of the form.



4. **REMOVE** the white rectangular liner from the adhesive flap.



5. **PRESS** the adhesive flap down to cover the pocket opening. Apply pressure to the flap to ensure the band is sealed.



2. **DETACH** a band insert from the form and place the patient's information onto the insert using a pre-printed label or by handwriting with a ballpoint pen.



3. **SLIDE** the insert fully into the band pocket opening.



6. **WRAP** the band tail around the wrist, snap to close, and cut the excess tail with scissors.



7. The band is now complete. If needed, the band may be reattached or resized using the R3™ Band. See instructions 10-12 on the back.

CONTINUED ON BACK

Visit www.typenexmedical.com or call us at 866.897.3639 to learn more.

CONTINUED FROM FRONT



8. **LABEL** the specimen tube after drawing the specimen.

APPLY a pre-printed or handwritten patient label aligned at the dashed line on the specimen tube sticker.



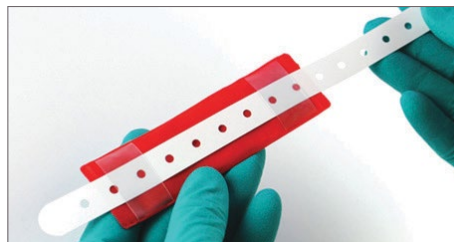
9. **TRANSPORT** the labeled specimen tube with the labeled form to the blood bank. Scan the specimen tube Blood Bank ID (BBID) into the Laboratory Information System (LIS).

Reattaching the Flexi 2.1™ Band using the R3™ Band

Should the Flexi 2.1 Band be purposefully removed by a clinician (e.g. for surgery), reattach using the R3 Band.



10. **CUT** the Flexi 2.1 Band on either side of the sealed pocket. Be sure not to cut into the pocket.



11. **TURN** over trimmed Flexi 2.1 Band and feed the R3 Band through the loops on the backside of the Flexi 2.1 Band.



12. **SNAP** the R3 band closure (on the patient's wrist) and trim the excess tail with scissors.