

Smearsafe™ | Blood Dispenser

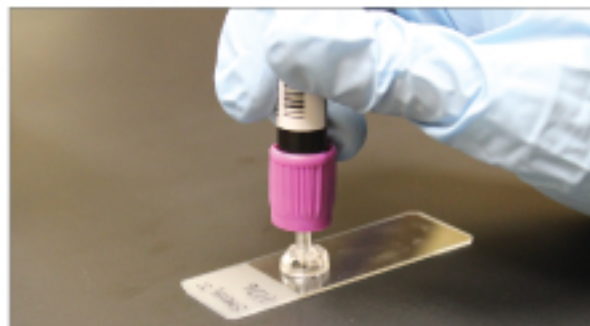
Smearsafe™ is intended to provide a safe means for obtaining a drop of blood from a closed collection tube without requiring the user to open the tube. Designed to produce a drop of blood suitable for a manual smear, this single-use device is compatible with Vacutainer® and Vacuette® tubes.

Smearsafe is clear, which allows you to see the blood drop as it is dispensed.



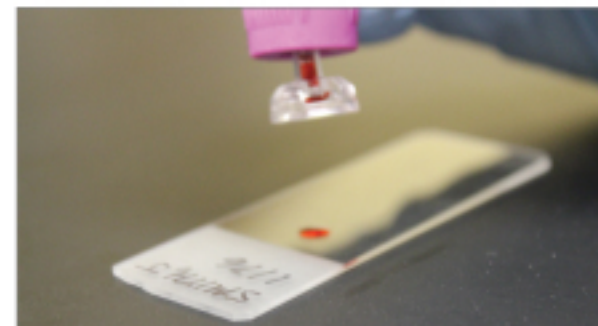
1. Hold the specimen tube upright.

Point the cannula of the Smearsafe device so that it is parallel to the specimen tube. Insert the Smearsafe device into the specimen tube septum until the cannula is no longer visible.



2. Invert the specimen tube and position Smearsafe on the middle of a glass slide or other target surface.

Gently press the tube downward until a blood drop forms at the tip of the Smearsafe device.



3. Once the drop touches the glass slide, relax the pressure and lift the tube straight up from the slide.

NOTE: The size of the drop can be controlled based on the speed and pressure applied to the tube.

After use, discard the Smearsafe device in a sharps medical waste container. Smearsafe may be discarded while still in the tube or removed from the tube and discarded separately. If discarded separately, hold the specimen tube cap in place while pulling Smearsafe out.

CAUTION:

1. Wear gloves when using Smearsafe.
2. Use care when handling Smearsafe as the cannula can cause injury or tear gloves if handled inappropriately.
3. Do not insert Smearsafe when the specimen tube is upside-down.
4. For specimen tubes that have been previously opened and recapped, be sure the tube cap is fully seated on the tube to avoid excess blood being dispensed onto the target surface.

Visit www.typenex.com or call us at 866.897.3639 to learn more.