

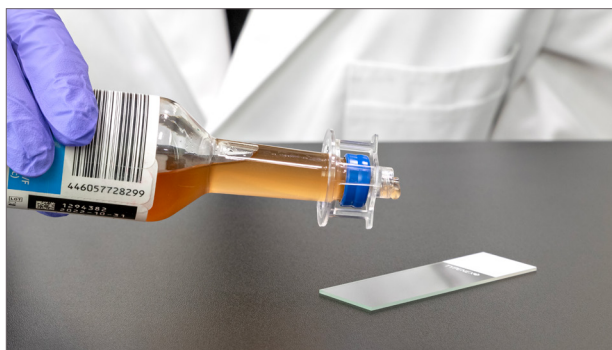


CultureSafe[™]

Blood Culture Bottle Dispensing Device

CultureSafe[™] is a sterile, single-use device designed to dispense samples from a blood culture bottle. Featuring a plastic cannula in place of a sharpened metal needle, CultureSafe minimizes the risk of needlestick injuries when transferring samples for further testing. This versatile solution fits a wide range of blood culture bottles and can be easily integrated into existing workflows to help achieve safe results.

CultureSafe™ | Blood Culture Bottle Dispensing Device



Features and Benefits

Improved Safety — Concealed plastic cannula reduces the risk of sharps injuries in comparison to using a metal needle and syringe.

Optimal Design — Absorbent cap aids in the capture of aerosolized particles when the bottle is punctured; cannula developed to reduce clogging.

Versatile Application — Can be used with two different dispensing techniques* to support various procedures and preferences.

Compatible Fit — Accommodates most blood culture bottles, including BD BACTEC and bioMérieux BacT/ALERT.

Ordering Information

Part Number	Description	Color	Units/Case
AW0101	CultureSafe I Blood Culture Bottle Dispensing Device	Clear	360
TMD57400	Sterile Guarded Luer Lock Connector (Female-Female)	Red	50

Typenex® Medical Microscope Slides are also available. Please connect with your dedicated sales representative to learn more.

*See Instructions for Use for complete information.

BD BACTEC™ is a trademark of Becton, Dickinson and Company.

BacT/ALERT® is a registered trademark of bioMérieux, Inc.

Visit www.typenex.com or call 866-897-3639 to learn more.