
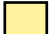





A FLOOR

- A1 = 680 sq ft
- A2 = 1200 sq ft
- A3 = 536 sq ft
- A4,5,6 = 3797s ft
- A 7 = 530 sq ft
- A 9 = 1264 sq ft
- A10 = 909 sq ft
- A13 = 455 sq ft
- A14 = 1385 sq ft
- A15 = 1386 sq ft
- A16 = 1023 sq ft



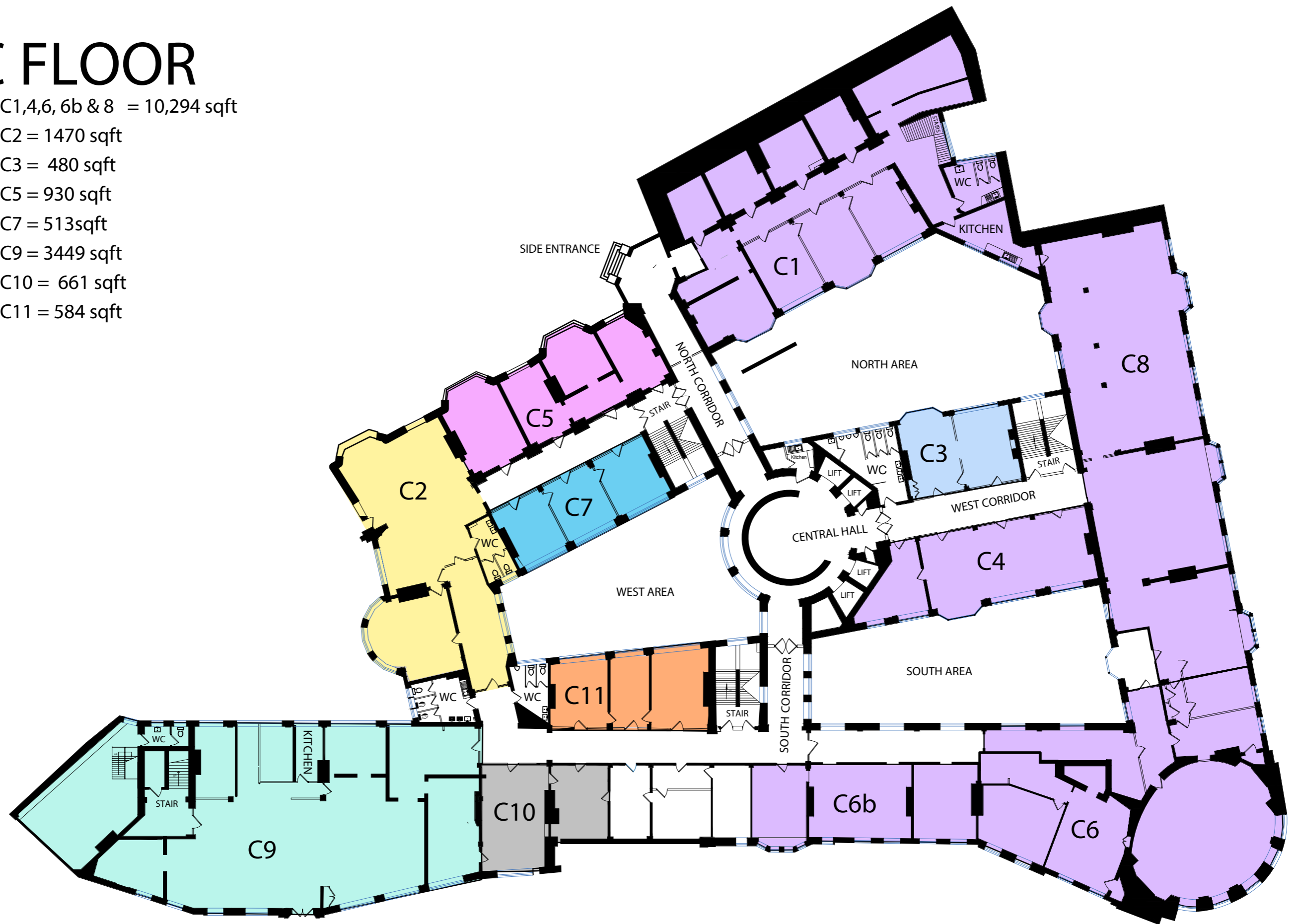
B FLOOR

-  B1 = 3272sqft
-  B2 = 5,503sqft
-  B3 = 3351sqft
-  B4 = 2286sqft
-  B5 = 686sqft
-  B6 = 2577sqft



C FLOOR

- C1,4,6, 6b & 8 = 10,294 sqft
- C2 = 1470 sqft
- C3 = 480 sqft
- C5 = 930 sqft
- C7 = 513sqft
- C9 = 3449 sqft
- C10 = 661 sqft
- C11 = 584 sqft



D FLOOR

- D2 = 1,075 sqft
- D3a = 1,290 sqft
- D4 = 551 sqft
- D1A = 565 sqft
- D9b = 253 sqft
- D10 = 3284 sqft
- D11 = 282 sqft
- D1C = 292 sqft
- D1D = 592 sqft
- D6A = 1096 sqft
- D11 = 427 sqft
- D1G = 158 sqft
- D8C = 683 sqft



E FLOOR

- E2 = 480 sq ft
- E4a = 458 sq ft
- E5a = 188 sq ft
- E6a = 540 sq ft
- E17 = 336 sq ft
- E8d = 384 sq ft
- E8g = 252 sq ft
- E9 = 336 sq ft
- E8A = 192 sqft
- E8B = 192 sqft
- E16 = 219 sqft
- E3 = 917 sqft
- E7d = 284 sqft
- E7e = 218 sqft
- E7g = 98 sqft



F FLOOR

■ F1a = 520 sqft

