



Vendor Requirements

Shuttle

Welcome! Whether this is your first time at HSL or you are a returning, we hope you have a great experience. In order to alleviate any stress on the day of the wedding, we've written this information sheet for you.

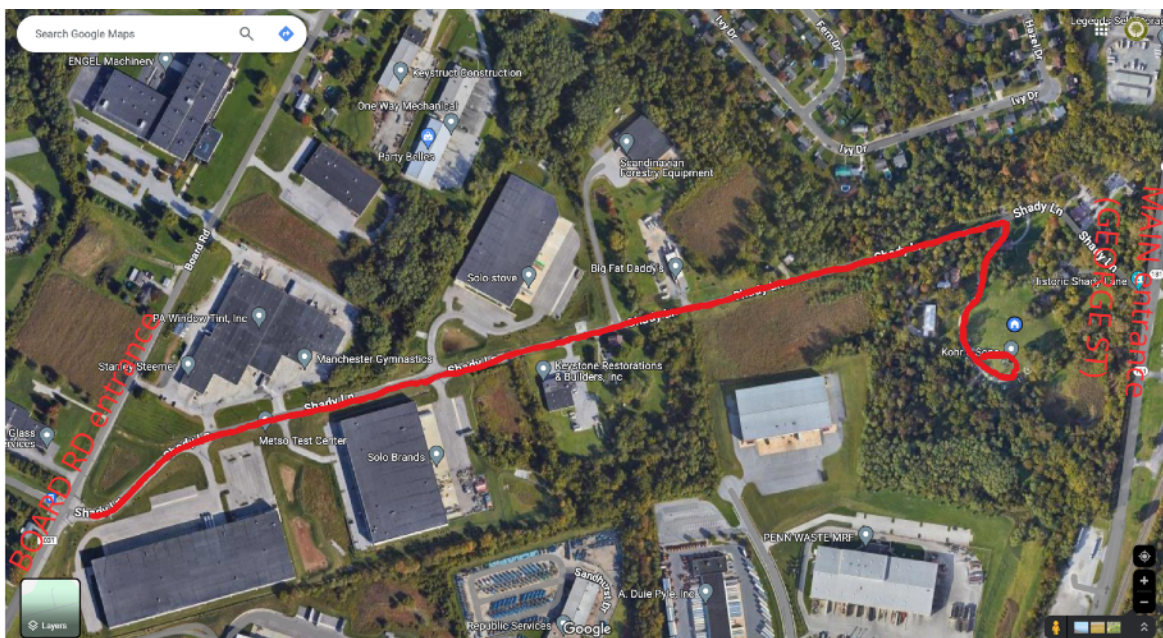
Historic Shady Lane REQUIRES all shuttles enter and exit the venue via Board Rd. Shuttles cannot enter the main entrance (George St) due to not being able to cross the 3 ton bridge on the property.

Shuttles will need a vendor code to enter. The code to enter is 1930.

They will then follow the parking signs to the parking area for guest drop off. HSL staff will greet guests will golf carts.

When leaving, they should exit the same way by slowly pulling up to the gate and waiting for it to automatically open.

On the wedding day- please contact the planner or the Historic Shady Lane staff at 717-870-6216 with any questions.





All drivers must have this information when coming to the venue the day of the wedding so they know to properly enter the venue.

We also ask to have the driver information when a driver is assigned to the couple. Please forward this information along with any questions to caitlyn@historicshadylane.com

Thank you!

Historic Shady Lane Team