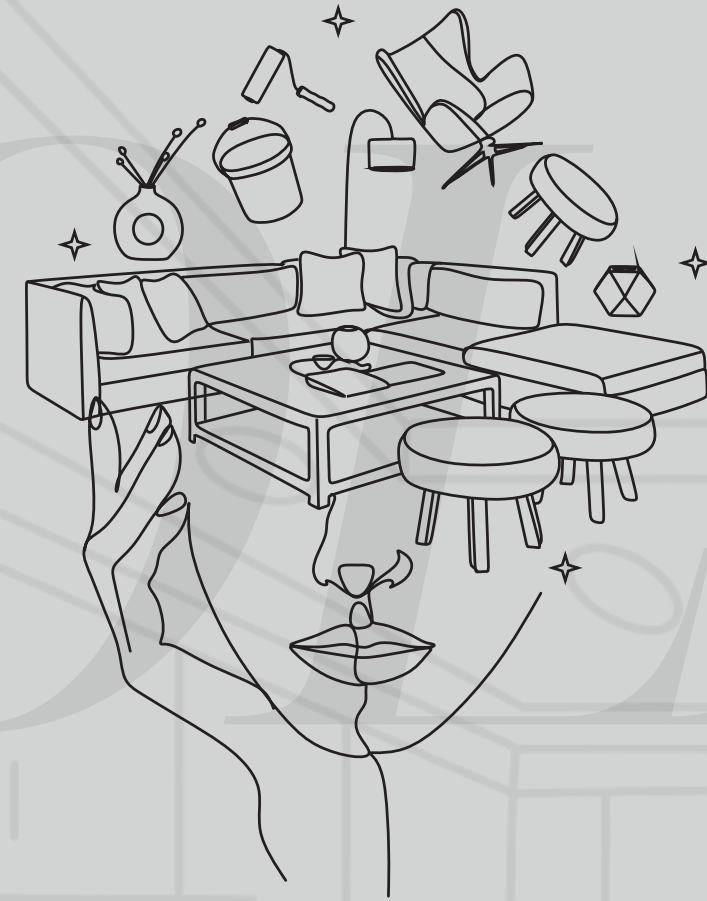


PORTFOLIO



AKSHARA
JAIN



ABOUT ME

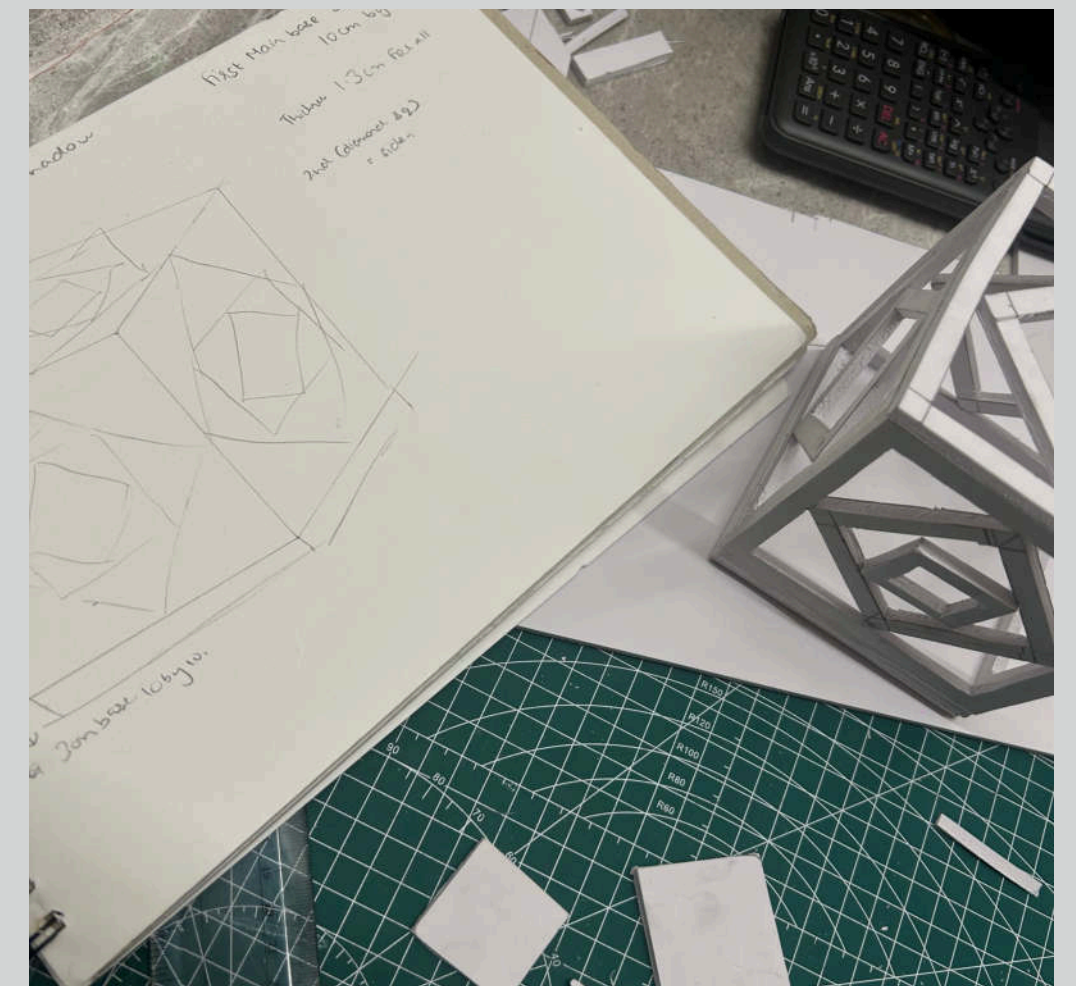
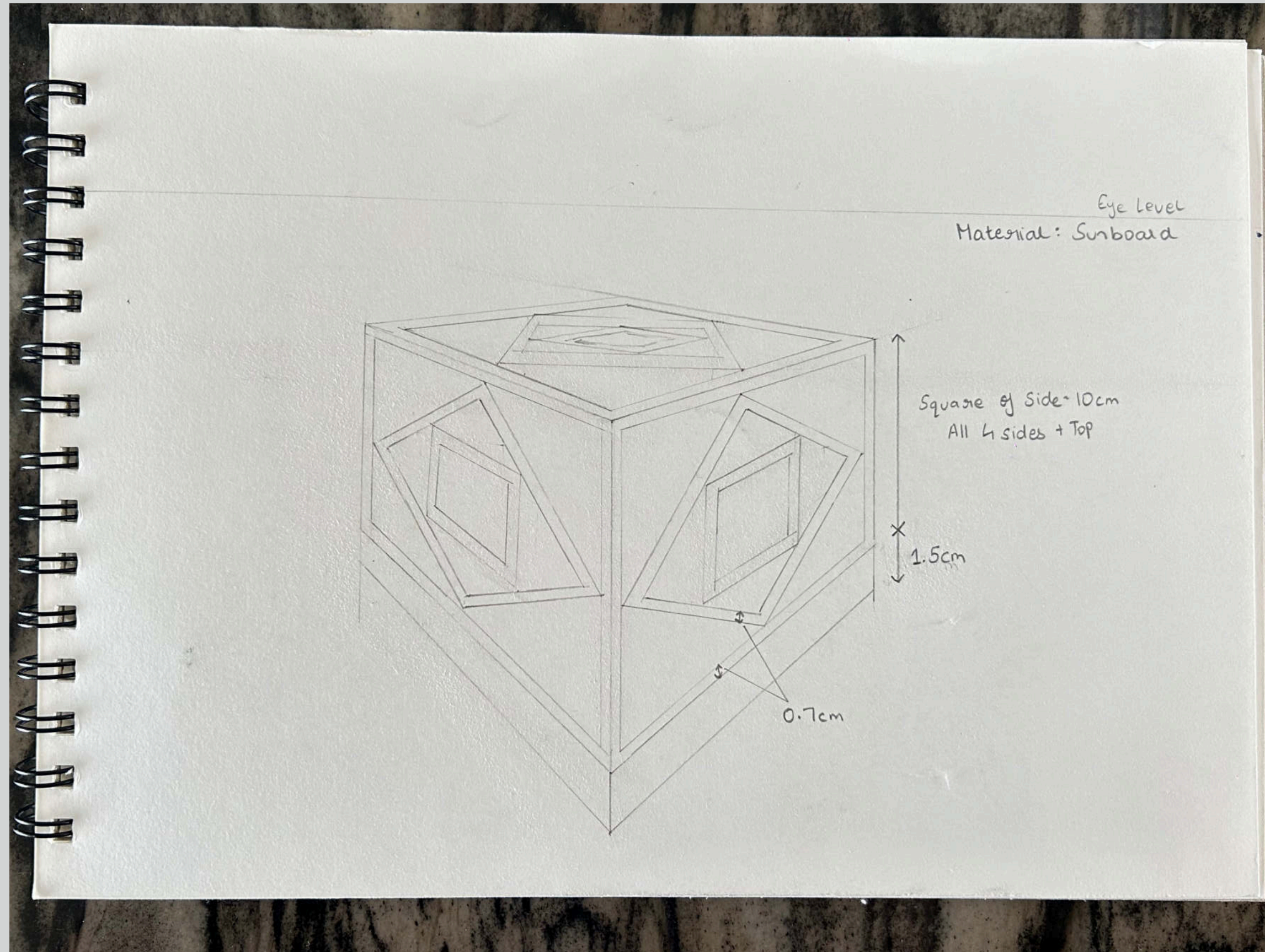
Blog: <https://medium.com/@aksharajain565>

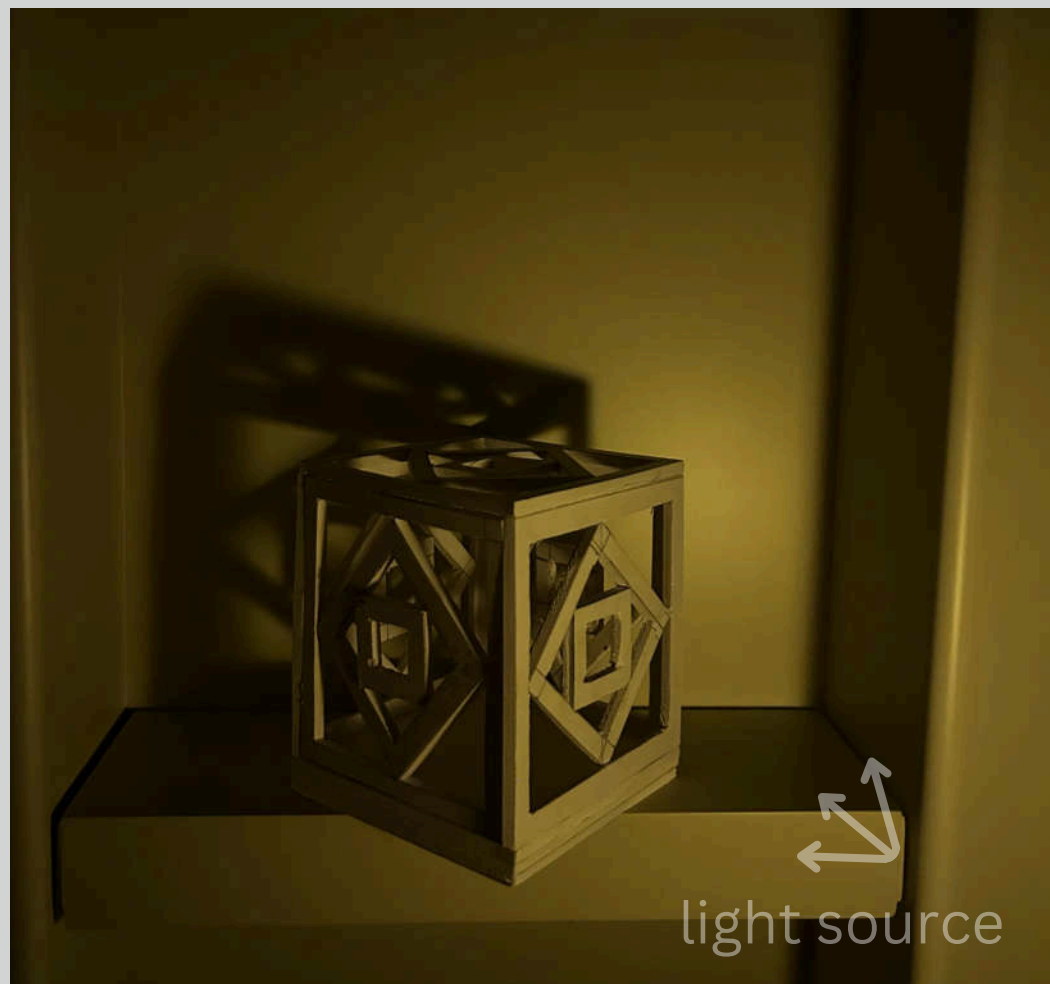
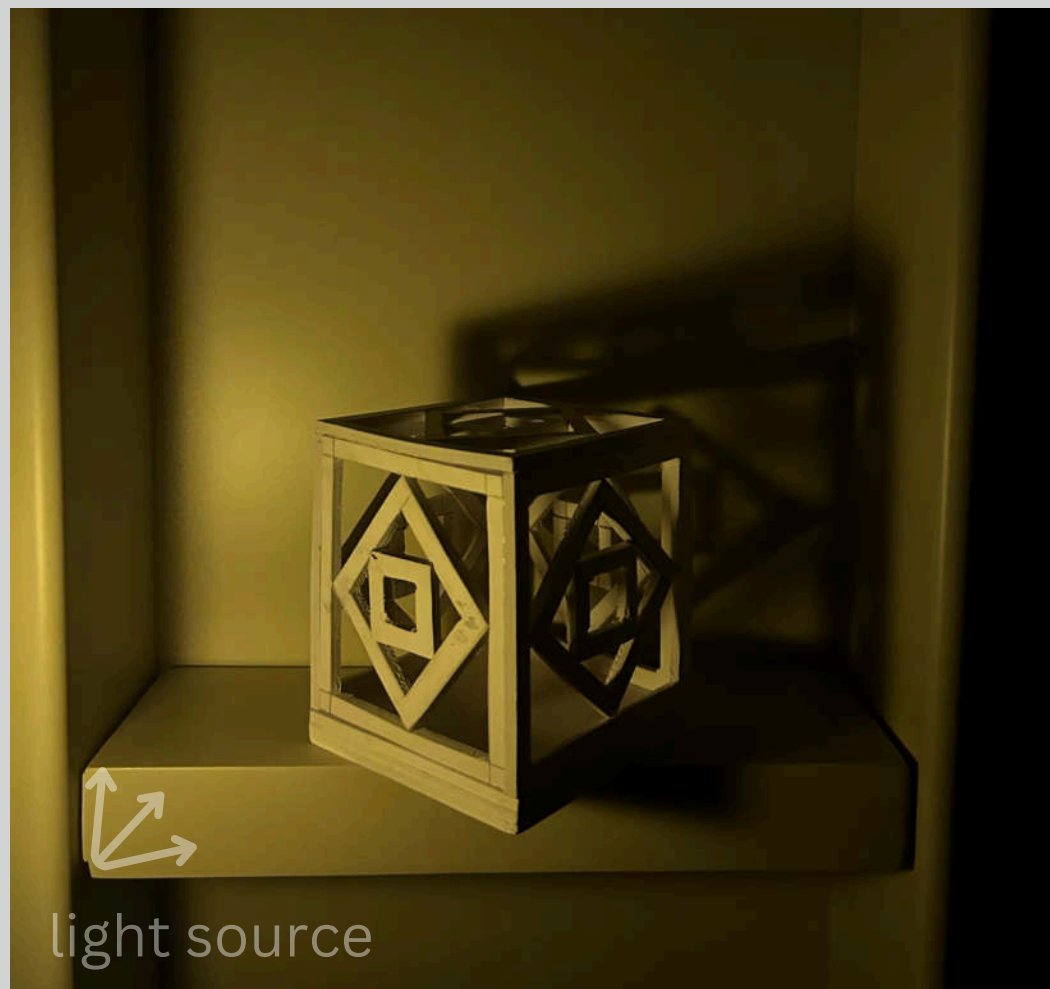
Website: <https://www.aksharajain.com/>

I'm Akshara Jain, "Akku" to the people closest to me, currently studying at Bombay Scottish School, Mahim, in Mumbai, India. I'm the kind of person who goes above and beyond for the people I love, honest, hardworking, and always ready to do something silly for the plot. My interests span aerial silk, dance, and fitness, but my greatest passion is design, especially interiors, a world where creativity thinks in ways most wouldn't expect. My work leans toward minimalism, but I love adding that pop of colour that brings the design together.

This portfolio brings together pieces I've created over the past year, from 3D models, light experiments, and art history explorations to 2D sketches, perspective drawings, and more.

1. Light and Shadow



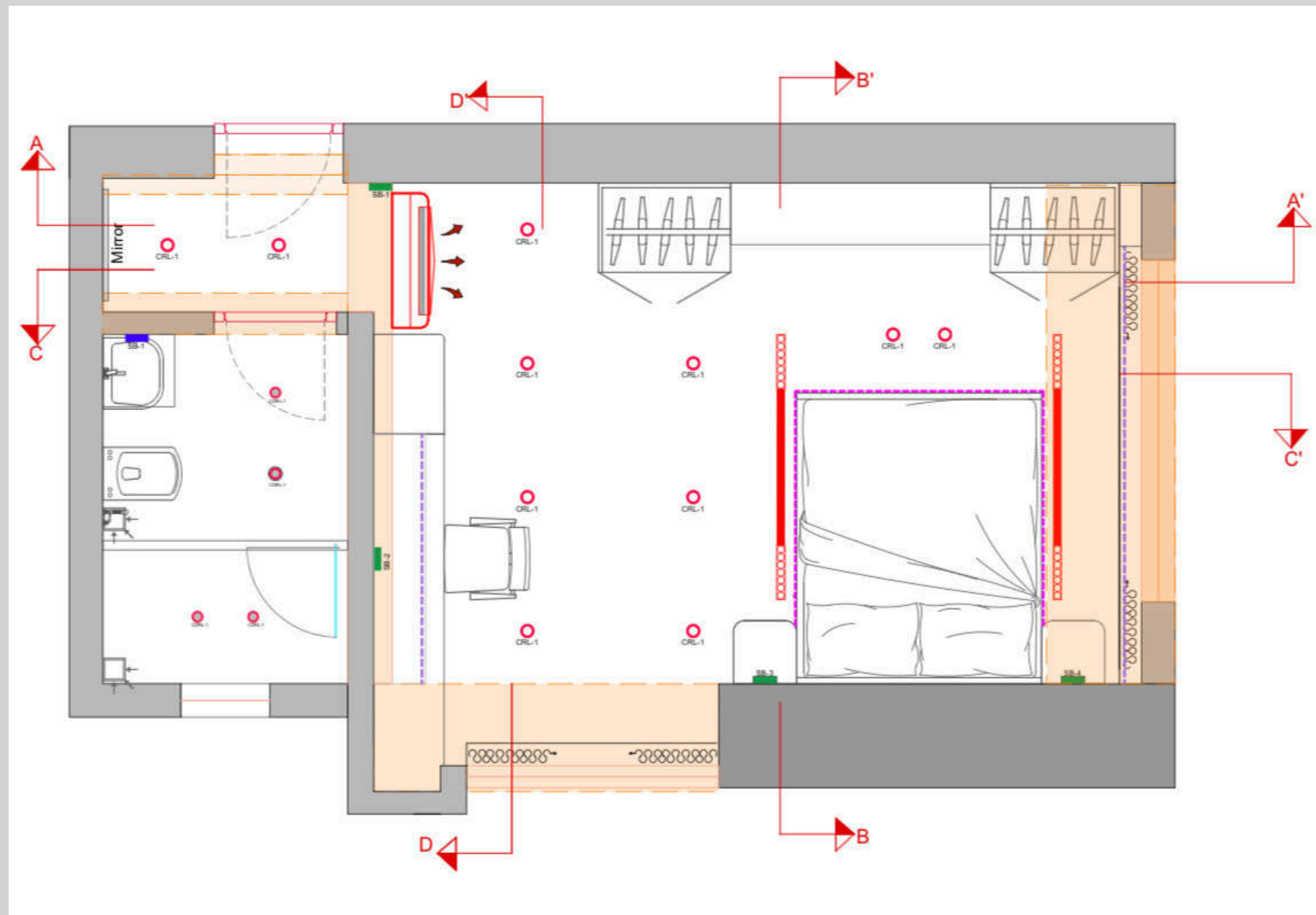


Light and Shadow explores how these two elements quietly shape our daily environment. To study this, I designed a small lamp-like structure using sunboard with geometric cut-outs. I then experimented with an LED light placed at different angles to observe how the shadows changed.

2. The Drafted Room

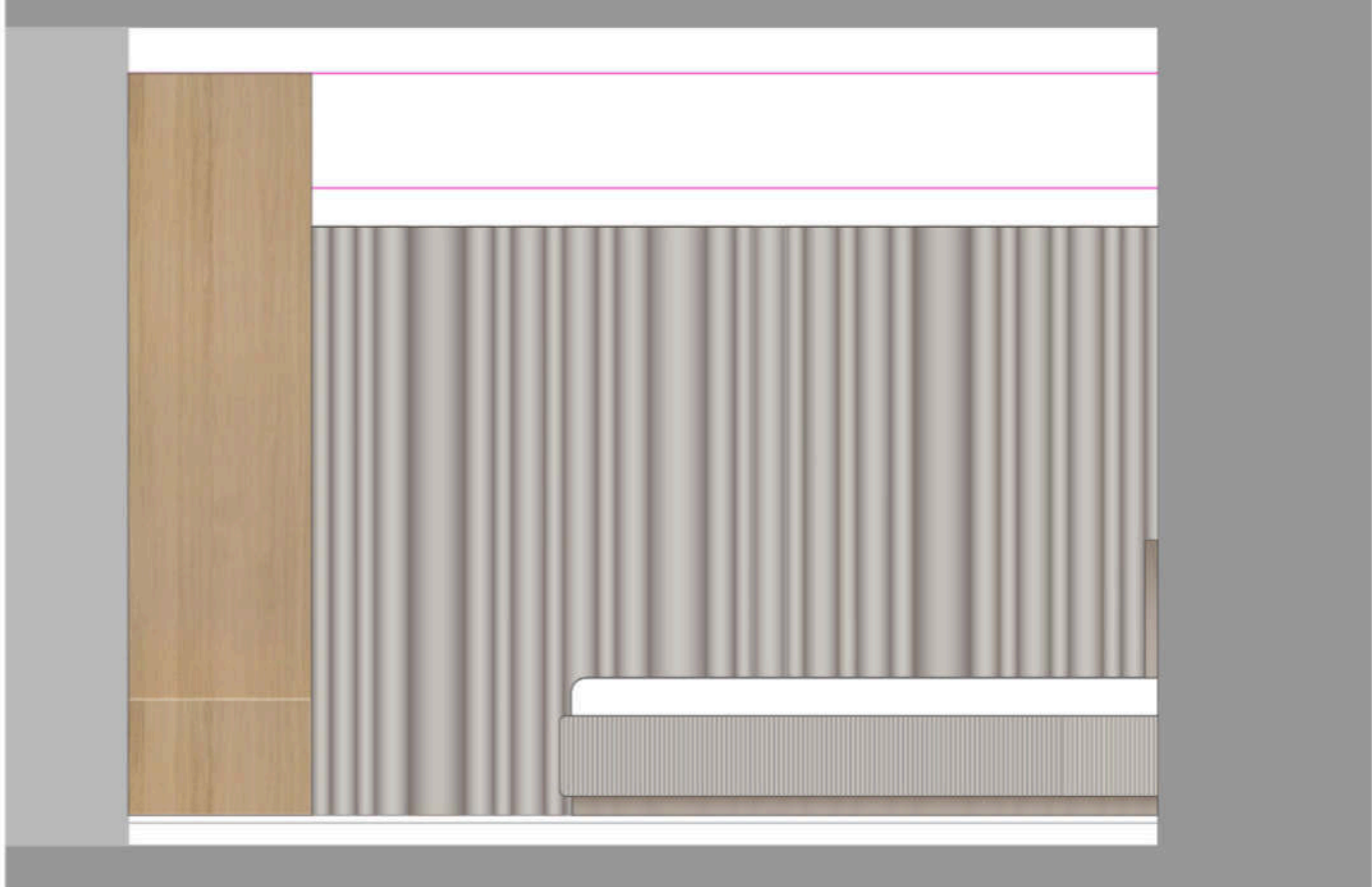
During my internship at HSDesign, I gained hands-on exposure to on-site interior design and strengthened my technical design skills. I learned to work efficiently in AutoCAD, where I developed a complete room layout that included the furniture, lighting, and switchboard plans.

I also created a mood board using Canva to visually communicate the design direction and curated each elevation to reflect the intended spatial experience.

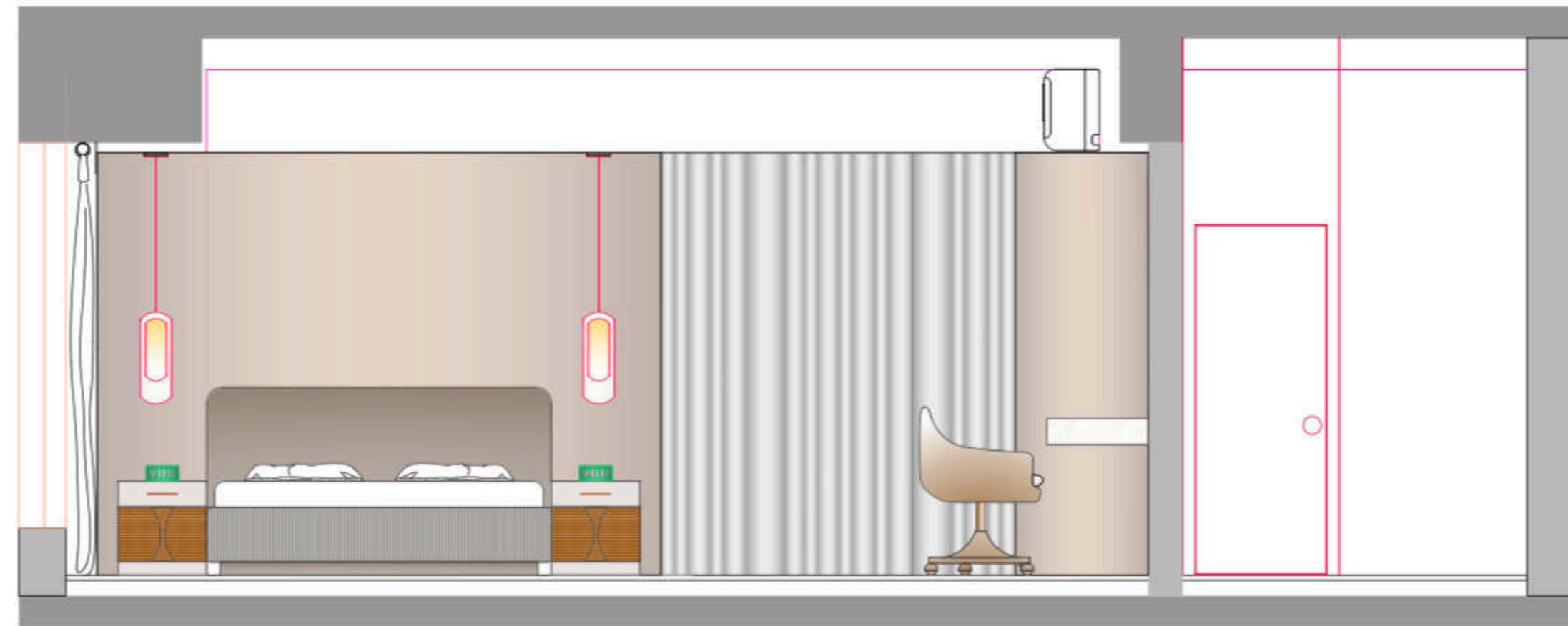




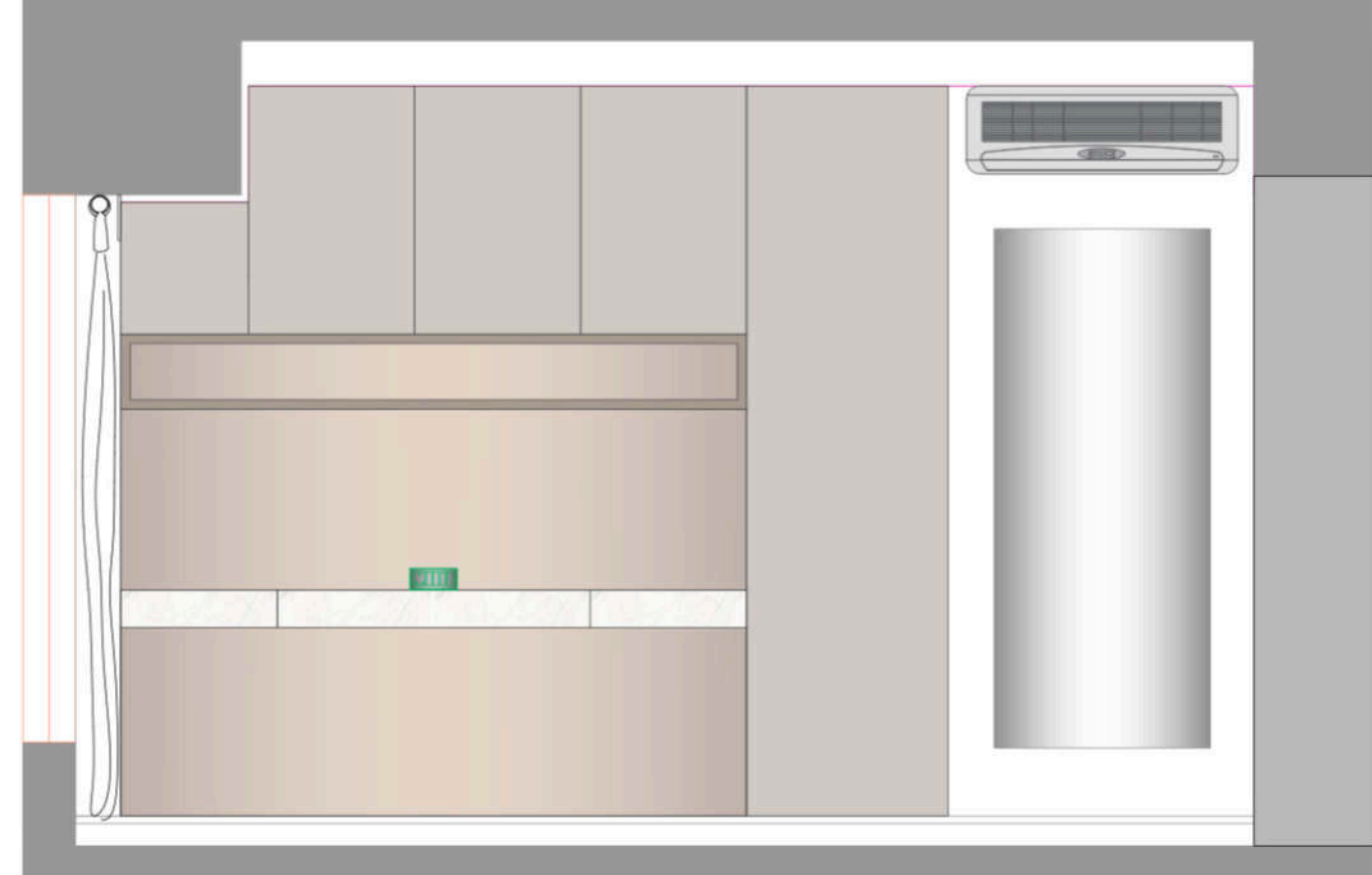
ELEVATION A-A'



ELEVATION B-B'



ELEVATION C-C'



ELEVATION D-D'

Hand-drawn floor plan of a bedroom. The overall dimensions are 25.7' wide by 17' deep. The plan includes a bed (15' x 15.7'), a storage unit (headache) (4.5' x 4.5'), a study (4.35' x 4.35'), a side table (4.8' x 4.7'), and a chair. The plan also shows a window (4.8' x 4.8') and a door (4.8' x 4.8'). The plan is labeled with dimensions and furniture names.

Dimensions:

- Overall Width: 25.7'
- Overall Depth: 17'
- Bed: 15' x 15.7'
- Storage unit (headache): 4.5' x 4.5'
- Study: 4.35' x 4.35'
- Side Table: 4.8' x 4.7'
- Chair: 4.8' x 4.8'
- Window: 4.8' x 4.8'
- Door: 4.8' x 4.8'

Furniture:

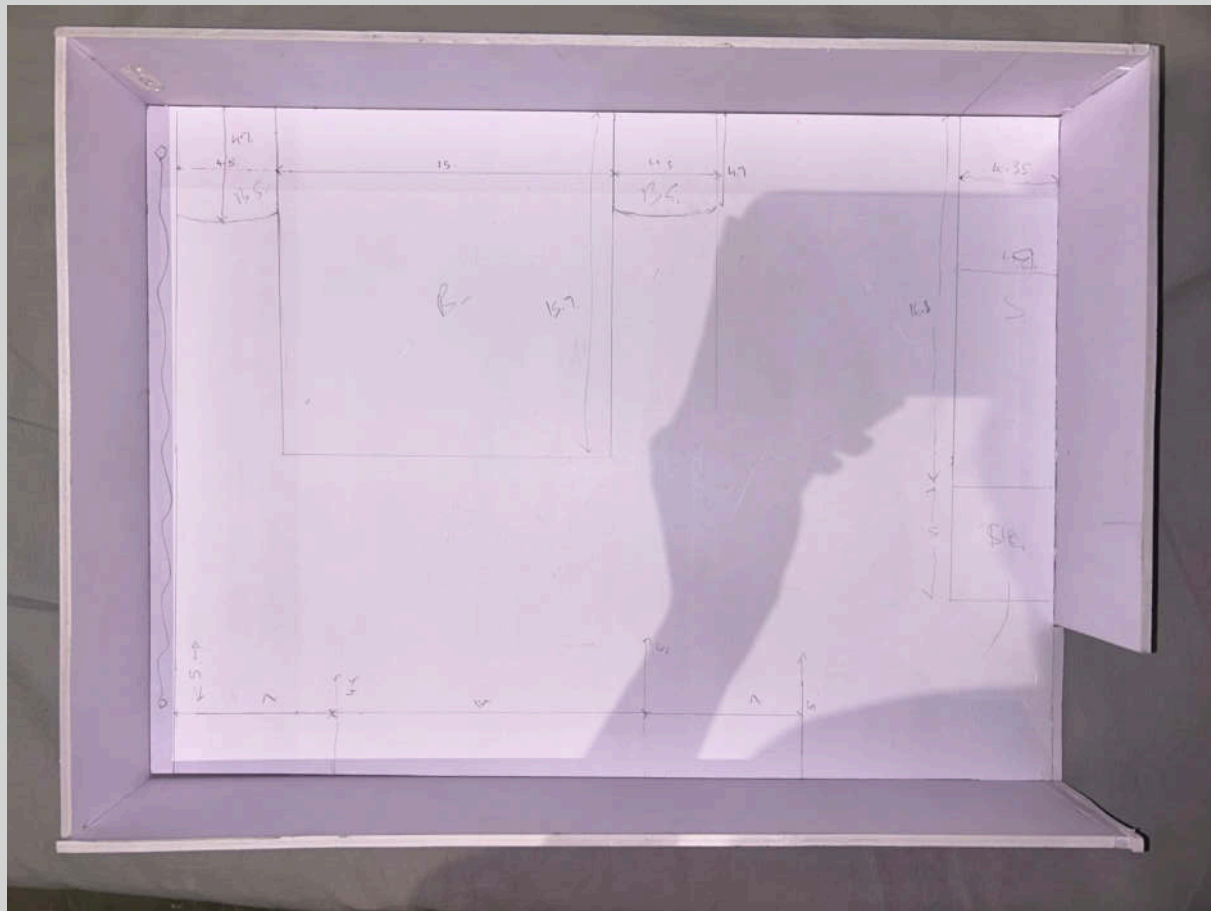
- Bed
- Storage unit (headache)
- Study
- Side Table
- Chair
- Window
- Door

Notes:

- White / grey
- Marble flooring



After assembling the base structure and walls, I finished it with colors matching my AutoCAD elevations. This process helped me clearly visualize the space and better understand its scale and layout.





4. The Green-Wood living area

For this piece, I wanted to move away from the modern style I explored earlier and try something more earthy and colorful. This concept reflects my belief that interiors don't always have to be minimal—many spaces lose character when they shy away from color. Through this model, I aimed to show how color can bring warmth and liveliness to a space.



I began with a rough sketch followed by a 2 Point Perspective with the colour to see how it will look. After which I transformed it into a 3-D Model using Sunboard.



5. Roots & Horizons

As an aspiring interior designer, i love making moodboards in my free time, Roots symbolizes the earthy interiors of the first moodboard where as Horizons symbolizes the openness and freedom related to the second moodboard.

SIZE: 29.7 cm by 21.0 cm

MEDIUM: Canva

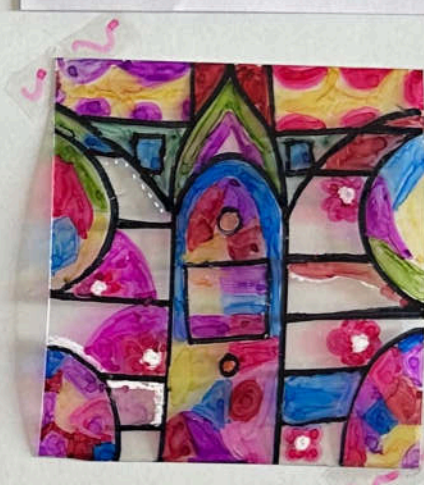
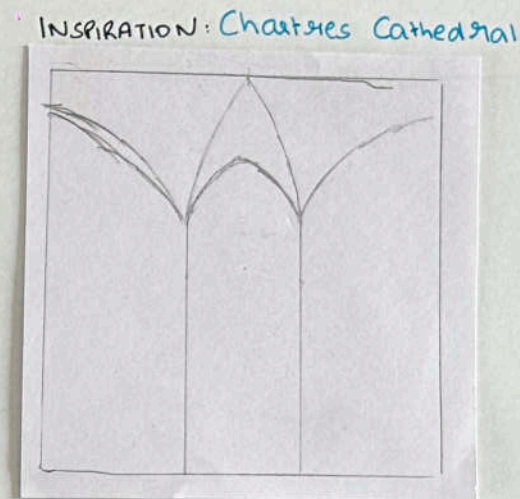
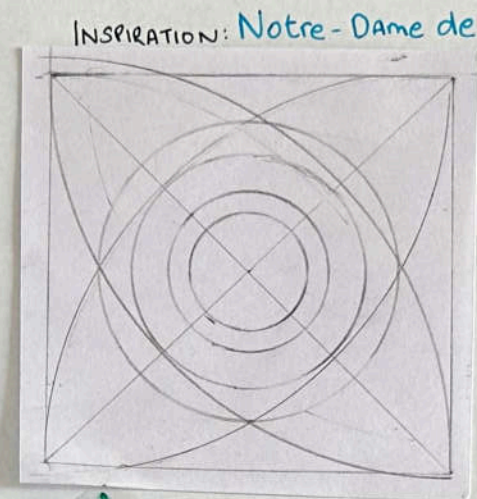


6. Reviving Stained Glass

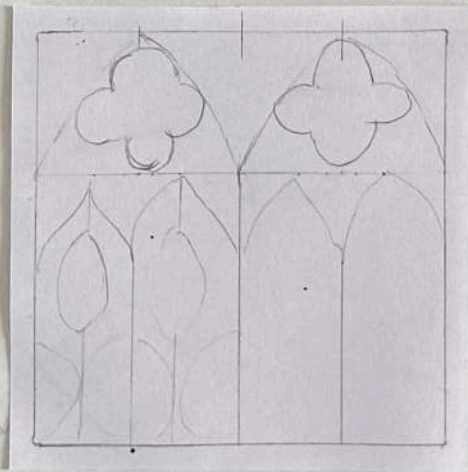
About the work:

I designed a glass jar by creating patterns over it, taking inspiration from stained glass art used in cathedrals in earlier times. I especially love the layered glass in Gothic buildings and how it is used in interiors.

While designing this, I was most inspired by Gothic architecture—particularly iconic sites like Notre Dame and Sainte-Chapelle—and their play of colour and structure. My design captures the essence of Gothic light in a small, modern object.



INSPIRATION: Sainte-Chapelle (Paris)



colour palette



Click on this for a 360 view !

7. Photography

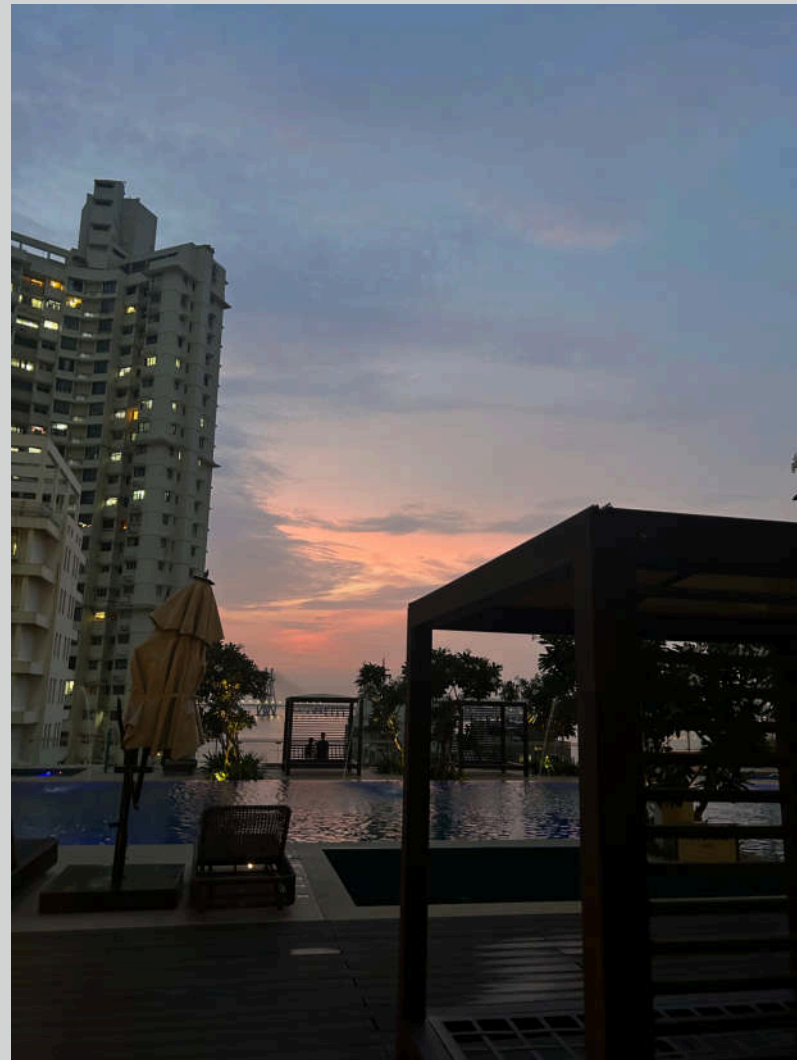
I love photography because it allows me to capture moments and beauty that often go unnoticed. For me, the sky has always been my favourite subject. I am drawn to the ocean, and photographing every sunrise and sunset has become a natural part of my creative practice.

It helps me understand colour and how the sky has its own visual language, whether it's orange, pink, or a plain old blue. The same sky and sun can express something completely different around the globe, yet it all feels connected.

📍 Mumbai , Asia



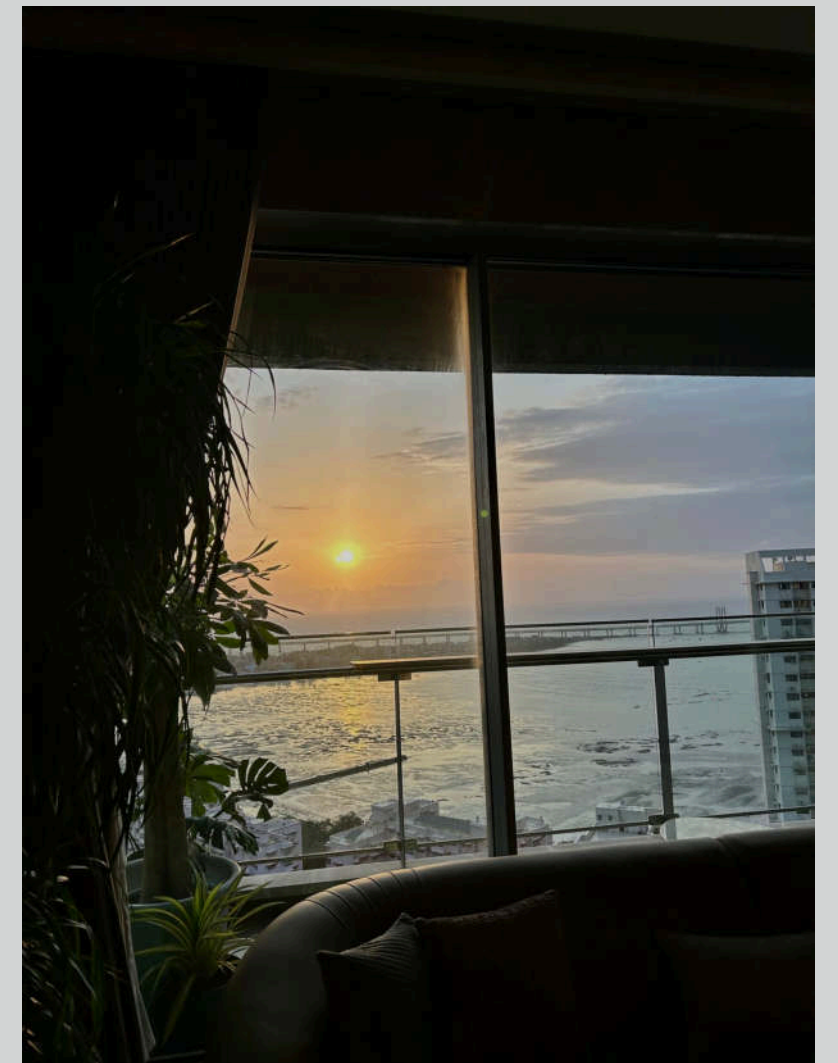
📍 Mexico , North America



📍 Mumbai , Asia

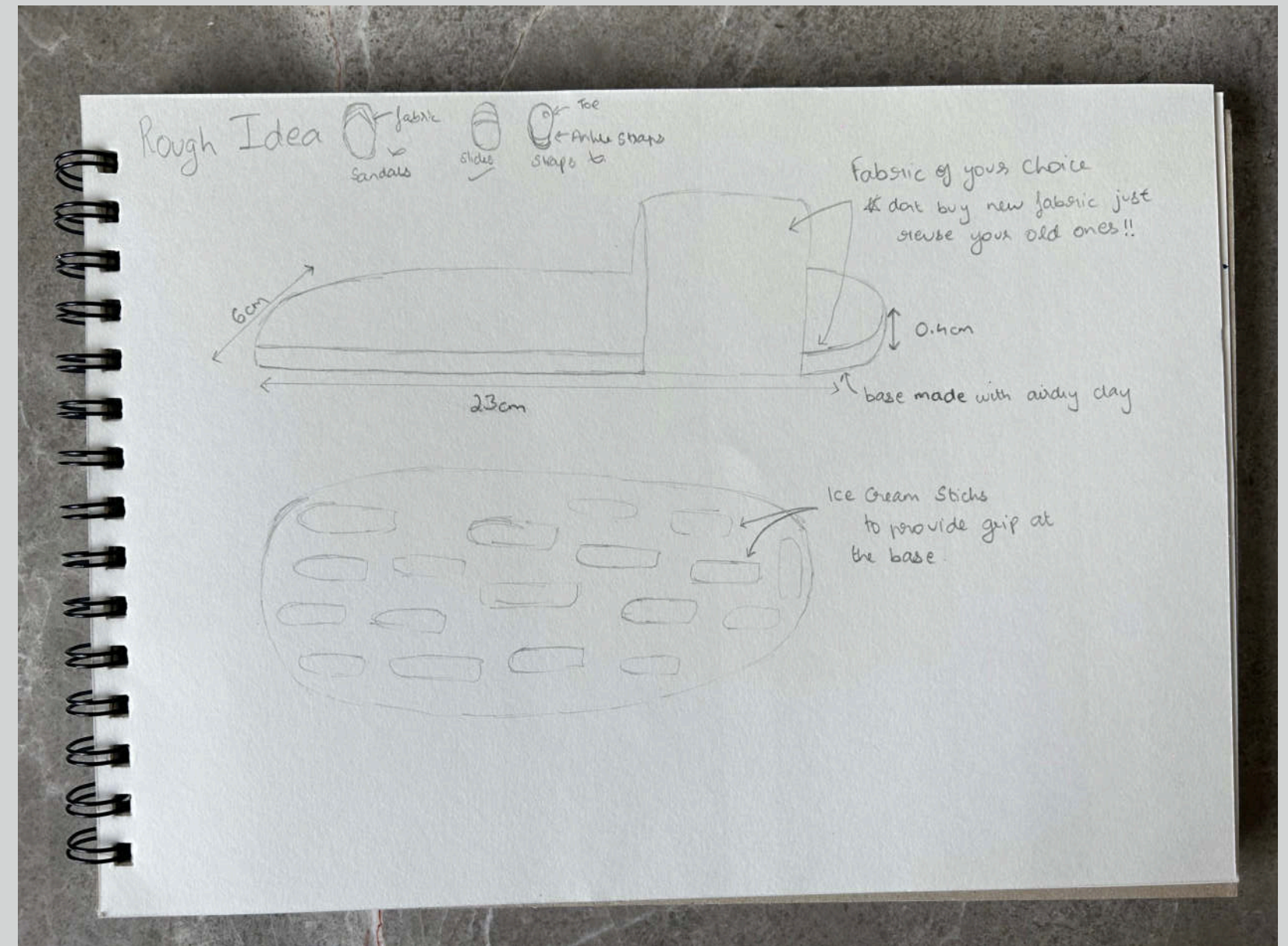


📍 Hong Kong , Asia



8. Sole Purpose

I always wondered what the best way is to use old fabric, especially that from clothes that were torn, stained, and basically of no use. That's when i thought why not let our feet feel the same softness our skin does? So I used the fabric to make everyday footwear. I personally love slides and find those to be the comfiest so i made those. These can easily be customised according to the type of fabric you have, and the best part about it is that any fabric and any color would work.



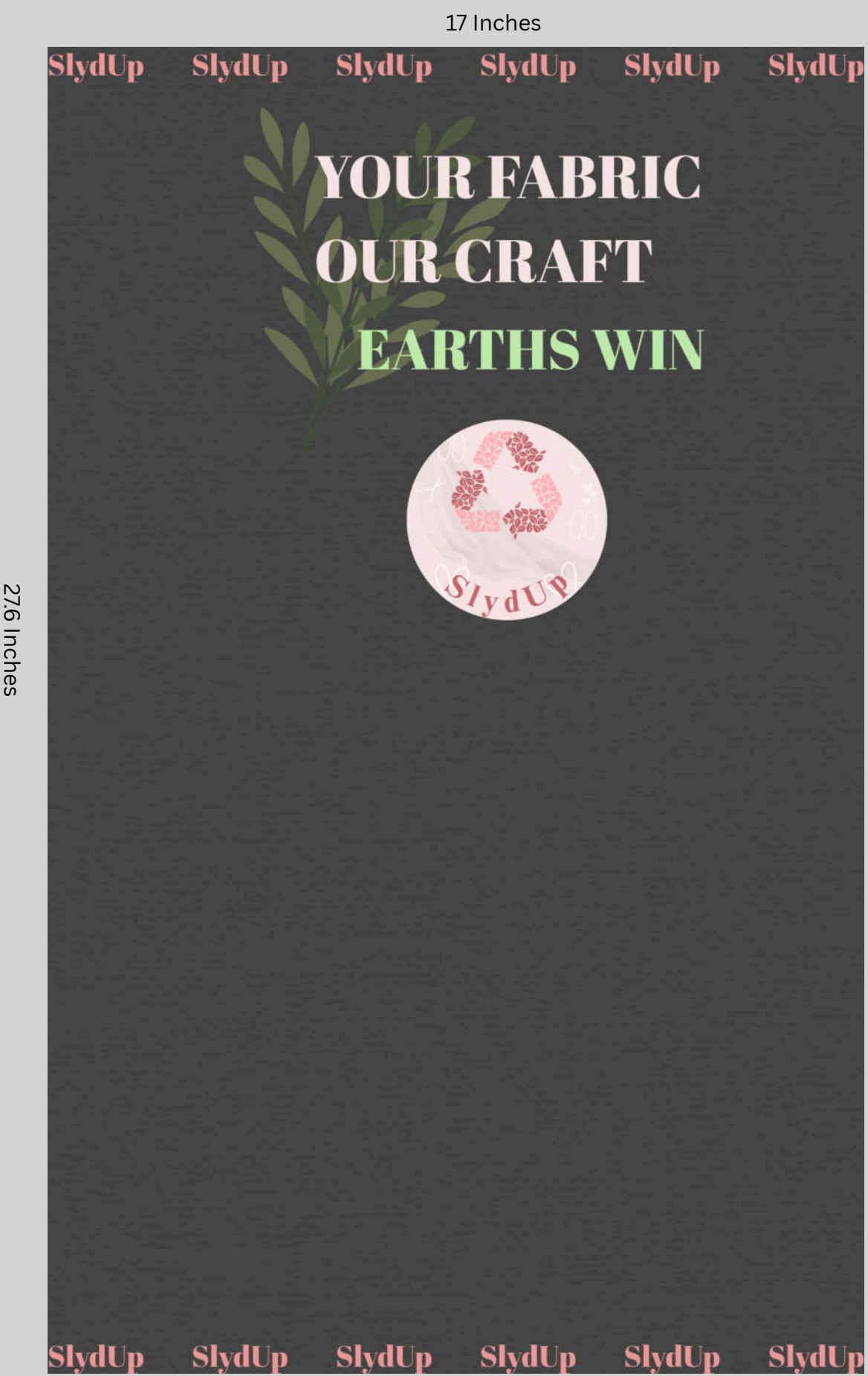
9. SlydUp

As a continuation of my earlier work, I designed a conceptual brand called Slydup, focused on upcycled everyday slides. The name merges “slide” and “up,” reflecting both the product and its sustainable mission.

For the packaging, I first designed the bag on Canva, then bought fabric and took the design to a local fabric printer to have it printed. I chose a fabric packaging because it can be used for storing not only shoes but also other items. I sewed the bag myself and added buttons to complete it. Along with the packaging, I also designed a matching business card.



Business Card



Fabric Design



10. Graphic Work

Over the past few years, I've gained extensive experience using Canva and Procreate for various school events and charity initiatives. As the Head of Design, Public Relations, and Social Media for several events, I created logos, posters, certificates, banners, and Instagram posts.

These roles helped me develop strong design skills and learn how to communicate ideas visually. It taught me the concept of spacing and how to place text/icons in a way that compliments the design while putting the main idea forward with the help of different sizes for fonts and elements.





INDIAN YOUTH PARLIAMENT

What is IYP?

The Scottish Indian Youth Parliament is a student led simulation of the Indian Parliament where students play the roles of assigned MPs of various parties who raise and answer questions and make bills on real issues related to the country with the thought of their assigned parties.

Why should you participate?

- Strengthen the Roots of Democracy
- Inculcate Tolerance of Others Views
- Enable Students to Know About Practices and Procedures of the Parliament
- Enhance Public Speaking Skills

**3RD
OCTOBER
2024**

For any queries, contact iyp@bombayscottish.in

[@scottish.iyp](https://www.instagram.com/scottish.iyp)



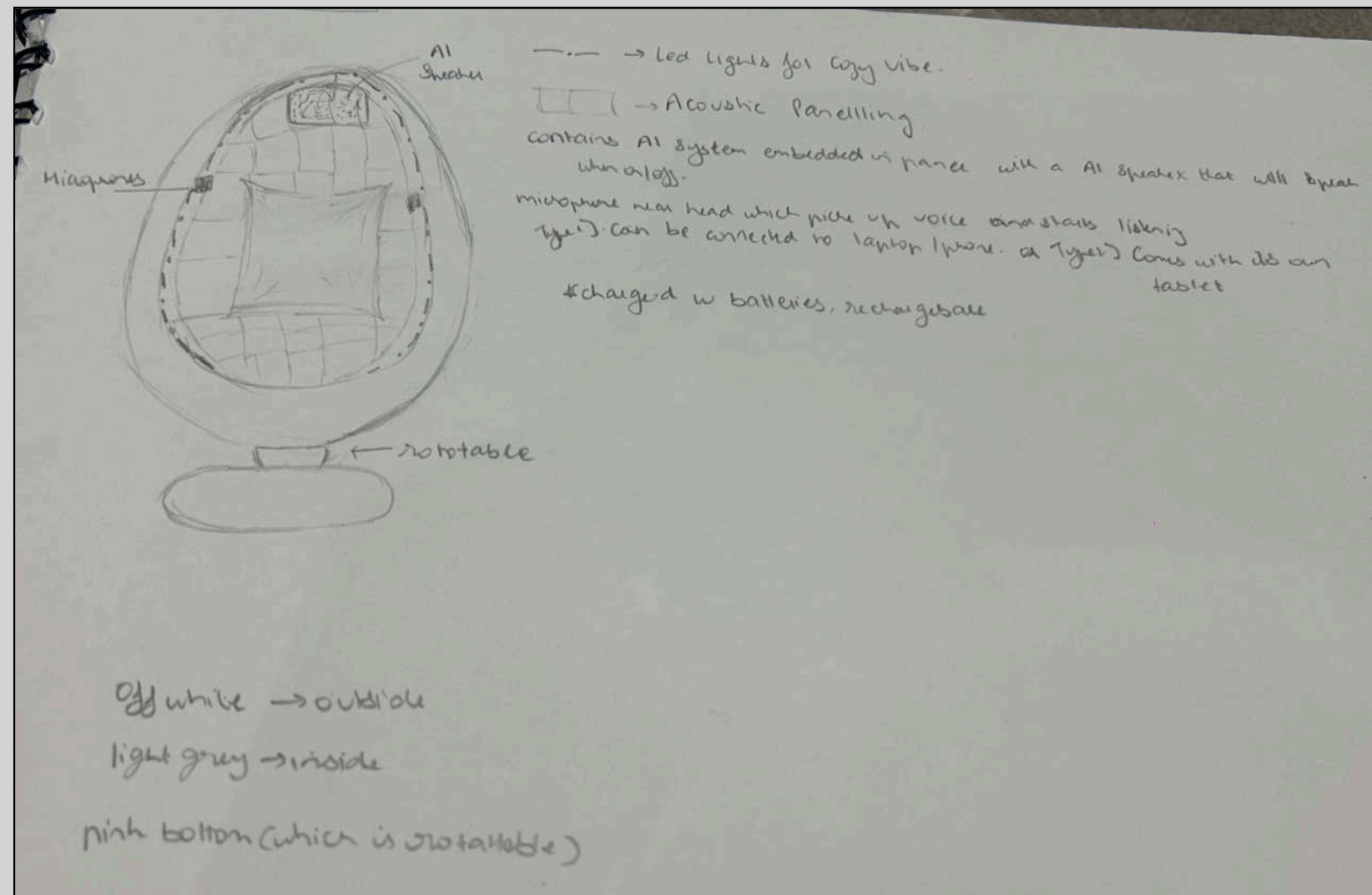
11. Speak Pod

About the SpeakPod:

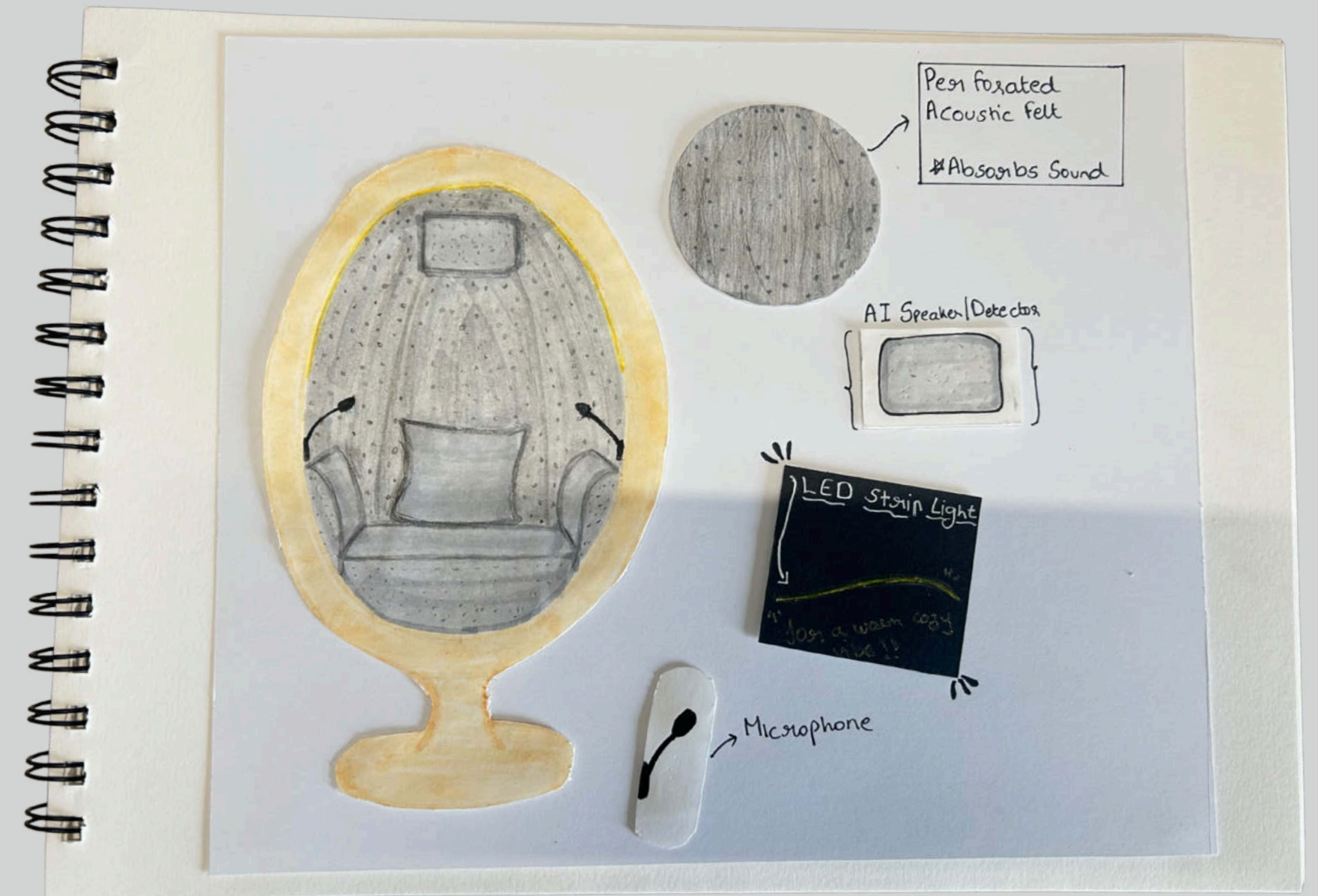
The SpeakPod is a chair prototype that I designed for someone who loves talking about their feelings rather than writing them down, but prefers doing it alone. I first came up with a rough sketch after which I made a more detailed sketch including the features/materials. I then put the image into an Artificial Intelligence website and, through different prompts, got my final chair design in accordance to what i envisioned.

Features:

- Perforated acoustic felt(absorbs sound and creates a sense of privacy)
- Microphone along with AI Powered Speaker
- Connects to your devices to store your thoughts



Rough Idea



Final Idea



1st try



2nd try



3rd try



4th try

I made several attempts with different AI prompts until I finally got the image that matched my design perfectly.
AI Tool used: Google Gemini



Final image