

# Elbows



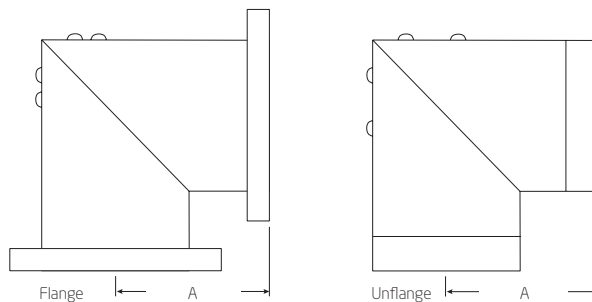
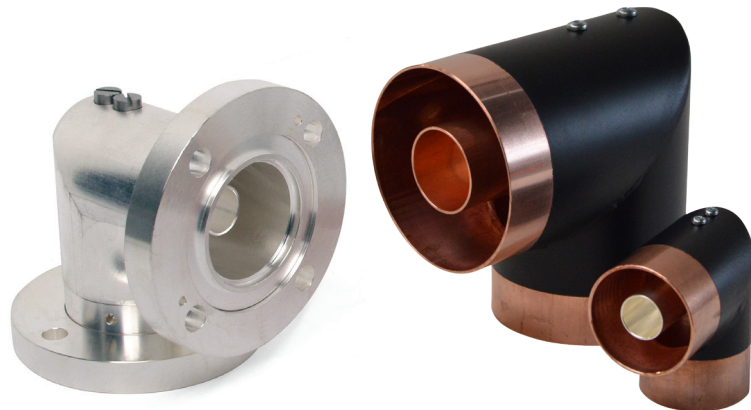
## PRODUCT FEATURES

- High quality low-loss material
- Easy assembly
- Customising possibilities

## PRODUCT PROFILE

Exir Broadcasting manufactures elbows for all our rigid lines, both for outdoor and indoor use. The outdoor models are equipped with fixed or swivel flanges. O-rings of high quality EPDM are used for gas tight flange connections.

All the support insulators for the inner conductor are made of high quality teflon (PTFE) that has been controlled and adjusted before manufacturing.



LINE TYPE	ARTICLE	Dim. A	MATERIAL OUTER CONDUCTOR	INDOOR/OUTDOOR
7/8" unflange	R078-ELBO-AA01	42.5 mm (1.67 in)	Copper	Indoor
7/8" flange	078F-ELBO-A0	53 mm (2.09 in)	Copper and Silver-plated brass	Indoor
7/8" flange	078F-ELBO-AC00	53.3 mm (2.09 in)	Silver-plated brass	Outdoor
1 5/8" unflange	R158-ELBO-A0	42.1 mm (1.66 in)	Copper	Indoor
1 5/8" flange	158F-ELBO-AB00	59.0 mm (2.32 in)	Copper and low-loss aluminum	Indoor
1 5/8" flange	158F-ELBO-A0	59.0 mm (2.32 in)	Silver-plated brass	Outdoor
3 1/8" unflange	R318-ELBO-A0	80.0 mm (3.15 in)	Copper	Indoor
3 1/8" flange	318F-ELBO-AB00	102.2 mm (4.02 in)	Copper and low-loss aluminum	Indoor
3 1/8" flange	318F-ELBO-A0	102.2 mm (4.02 in)	Silver-plated brass	Outdoor
RL98 unflange	RL98-ELBO-A0	85.0 mm (3.35 in)	Copper	Indoor
4 1/2" unflange	R412-ELBO-A0	87.8 mm (3.46 in)	Copper	Indoor
4 1/2" flange	412F-ELBO-AB00	110.0 mm (4.33 in)	Copper and low-loss aluminum	Indoor
4 1/2" flange	412F-ELBO-AC00	106.9 mm (4.21 in)	Copper and Silver-plated brass	Outdoor
NAX120 unflange	R120-ELBO-A0	97.5 mm (3.84 in)	Aluminum	Indoor
6 1/8" unflange	R618-ELBO-A0	117.8 mm (4.64 in)	Copper	Indoor
6 1/8" flange	618F-ELBO-AB00	149.6 mm (5.89 in)	Copper and low-loss aluminum	Indoor
6 1/8" flange	618F-ELBO-A0	148.8 mm (5.86 in)	Copper and Silver-plated brass	Outdoor
RL230 unflange	R230-ELBO-A0	157.5 mm (6.20 in)	Aluminum	Indoor