

Rigid Line - Tubes



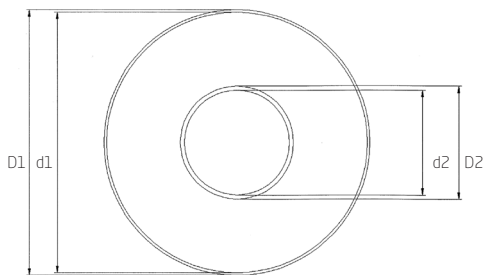
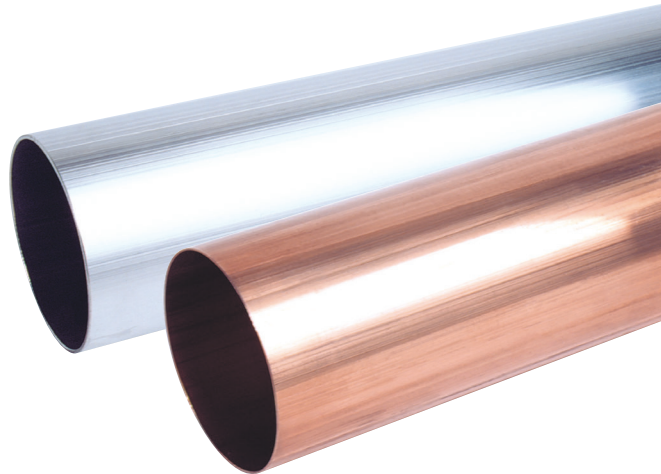
PRODUCT PROFILE

Exir Broadcasting supplies rigid lines of different types. Low-loss copper and various aluminium alloys are used to ensure high conductivity. The tubes are connected with copper sleeves that are tightened with tube clamps. The inner conductors are connected with silver-plated brass bullets.

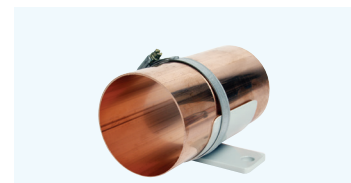
The maximum production length of a tube is approximately 5 metres (16.4 ft).

If the maximum length is used, the inner conductor must be supported by inner supports.

All dimensions can be ordered with connecting flanges. More detailed information is available on request.



HANGERS	
TYPE OF LINE	ARTICLE
7/8" unflange	015-0900
1 5/8" unflange	015-1000
3 1/8" unflange	015-1050
4 1/2" unflange	015-1100
NAX120 unflange	015-1095
6 1/8" unflange	015-1200



WALL HANGERS	
TYPE OF LINE	ARTICLE
7/8" unflange	1100555
1 5/8" unflange	R158-FAST-A1
3 1/8" unflange	R318-FAST-A1
4 1/2" unflange	R412-FAST-A1
NAX120 unflange	R120-FAST-A2
6 1/8" unflange	R618-FAST-A1

ARTICLE	211-008006 INNER 211-022011 OUTER	211-016009 INNER 211-041012 OUTER	211-033010 INNER 211-079012 OUTER
TYPE OF LINE	7/8" unflange	1 5/8" unflange	3 1/8" unflange
MATERIAL INNER	Low-loss copper	Low-loss copper	Low-loss copper
MATERIAL OUTER	Copper	Copper	Copper
IMPEDANCE	50 Ohm	50 Ohm	50 Ohm
D1	22.23 mm (0.88 in)	41.30 mm (1.63 in)	79.40 mm (3.13 in)
d1	19.94 mm (0.79 in)	38.79 mm (1.53 in)	76.89 mm (3.03 in)
D2	8.66 mm (0.34 in)	16.85 mm (0.66 in)	33.40 mm (1.31 in)
d2	7.39 mm (0.29 in)	14.93 mm (0.59 in)	31.27 mm (1.23 in)
TUBE LENGTH (std)	4 m (13.1 ft)	5 m (16.4 ft)	5 m (16.4 ft)
ARTICLE	211-044010 INNER 211-106015 OUTER	211-052010 INNER 219-125025 OUTER	211-660010 INNER 211-155018 OUTER
TYPE OF LINE	4 1/2" unflange	NAX120 unflange	6 1/8" unflange
MATERIAL INNER	Low-loss copper	Low-loss copper	Low-loss copper
MATERIAL OUTER	Copper	Aluminium	Copper
IMPEDANCE	50 Ohm	50 Ohm	50 Ohm
D1	106.0 mm (4.17 in)	125.0 mm (4.92 in)	155.6 mm (6.13 in)
d1	103.0 mm (4.06 in)	120.0 mm (4.72 in)	151.92 (5.98 in)
D2	44.74 mm (1.76 in)	52.12 mm (2.05 in)	65.99 mm (2.6 in)
d2	42.80 mm (1.69 in)	50.04 mm (1.97 in)	64.01 mm (2.52 in)
TUBE LENGTH (std)	5 m (16.4 ft)	5 m (16.4 ft)	5 m (16.4 ft)