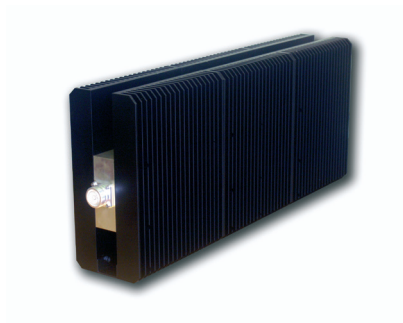


Power Load

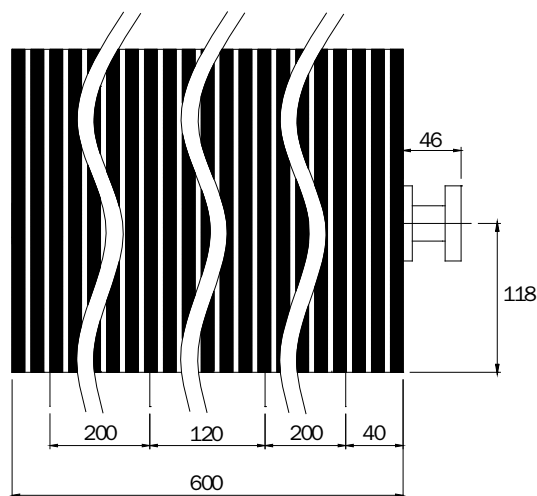
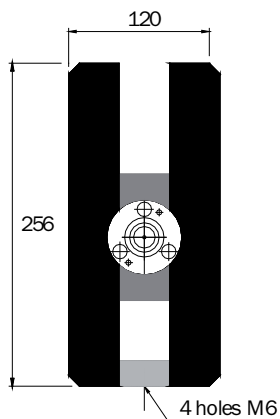
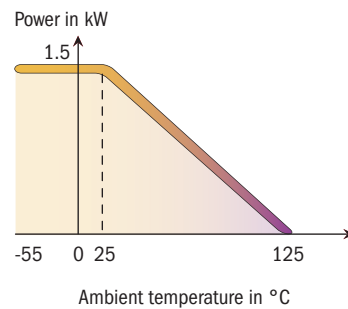
1,5 kW



Standards
NF C 96-315
MIL-DTL-39030



SPECIFICATIONS	1,5 kW Series
FREQUENCY	DC - 1 GHz
IMPEDANCE	50 Ohm \pm 5%
Max VSWR	\leq 1.10 at 1 GHz
Average power @ 25° C	1,5 kW rms
Peak power	40 kW
Temperature range	-55 to +125 °C
Cooling	Natural air convection
Weight	24 kg



Dimensions in mm

Versions and options	
Article	006-1160
Connections	7/8" flange
Options	Thermoswitch