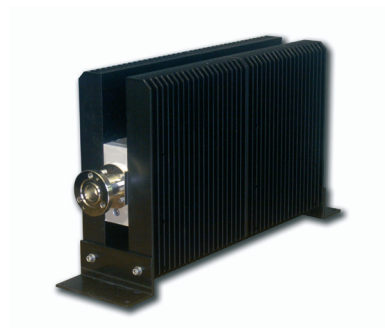


# Power Load

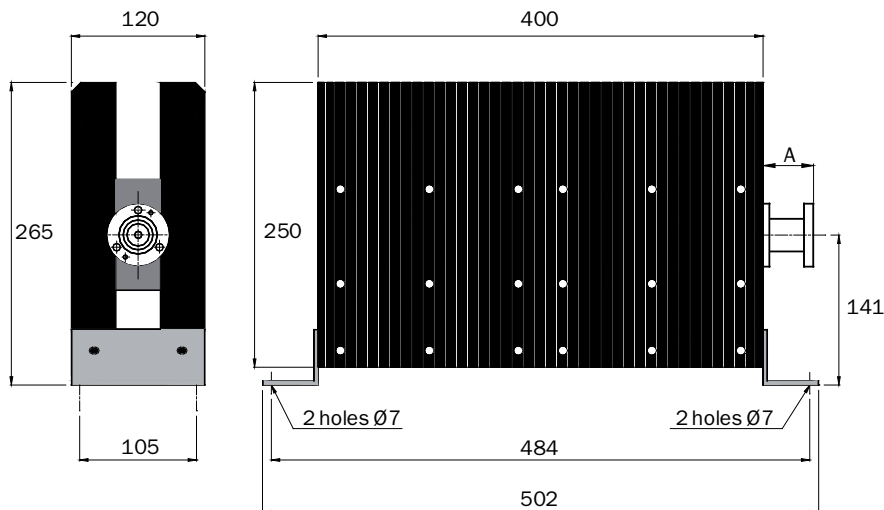
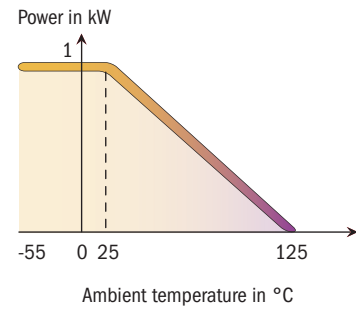
1,0 kW



Standards  
NF C 96-315  
MIL-DTL-39030



SPECIFICATIONS	1 kW Series
FREQUENCY	DC - 1 GHz
IMPEDANCE	50 Ohm $\pm$ 5%
Max VSWR	$\leq$ 1.10 at 1 GHz
Average power @ 25° C	1,0 kW rms
Peak power	40 kW
Temperature range	-55 to +125 °C
Cooling	Natural air convection
Weight	15 kg



Dimensions in mm

## Versions and options

Article	006-1150	Dimension A
Connections	7/16 female	22 mm

## Options

- N or 7/8" flange connection
- Thermoswitch