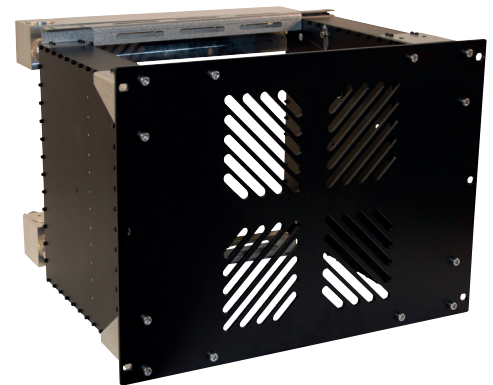


# DAB/DMB Constant Impedance Combiner

100 W rms, 6 Pole



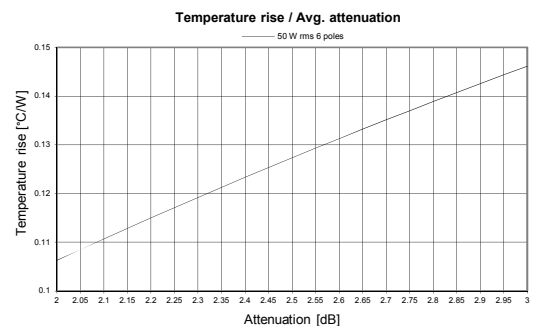
SPECIFICATIONS	STANDARD	OPTIONAL
FREQUENCY	170 - 240 MHz	
BANDWIDTH	1.54 MHz	
ORDER	6 Poles, 1 cross-coupling	
APPLICATION	One guard combining	Adjacent Ch combining
DAB	Uncritical mask	.
IMPEDANCE	50 Ohm	
NB RETURN LOSS (VSWR)	>26 dB (<1.11)	
WB RETURN LOSS (VSWR)	>30 dB (<1.07), 2 specified channels	
MAX OUTPUT POWER RATING*	300 W rms	
NB INPUT CONNECTOR	7/16 f	7/16 m
WB INPUT CONNECTOR	7/16 f	7/16 m
OUTPUT CONNECTOR	7/16 f	7/16 m
TEMPERATURE STABILITY	< +/-3 kHz / °C	
MAX PRODUCT TEMPERATURE	70 °C	
ENVIROMENTAL CONDITION	-5 to 70 °C IP40	



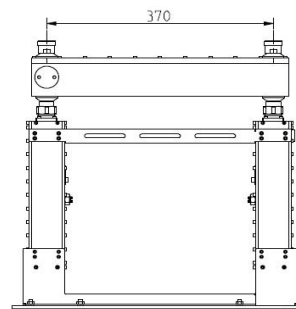
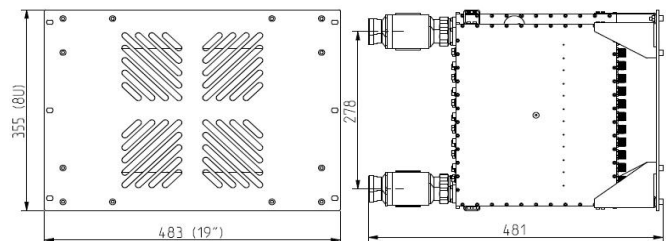
DIMENSIONS AND WEIGHT	OPTIONAL
DIMENSIONS	481 x 483 x 355 mm (8U)
L x W x H	(18.9 x 19 x 14 in)
WEIGHT	20 kg (44.1 lb)
FRAME	19" rack Stand alone
COLOUR	Black & Aluminium

## ARTICLE: CID6C05B-1PAA AAA

- C** I = Combiner type
- D** = Frequency band
- 6** = No. of poles
- C** = Cavity based
- 05** = Cavity size
- B** = Version
- 1** = Number of cross coupling
- P** = Coating
- A** = Narrowband coupler
- A** = Wideband coupler
- A** = Narrowband connection
- A** = Wideband connection
- A** = Output connection



TYPICAL DATA*	DAB
ARTICLE NO	CID6C05B-1PAAxxx
<b>NB INSERTION LOSS</b>	
Avg. signal bandwidth	<2.30 dB
Centre frequency	<2.15 dB
Signal band edge	± 0.77 MHz <3.05 dB
	± 0.97 MHz > 5 dB
	± 1.75 MHz >40 dB
	± 2.2 MHz >60 dB
<b>WB INSERTION LOSS</b>	
	± 3.0 MHz <0.15 dB
	± 2.2 MHz <0.30 dB
	± 1.75 MHz <0.60 dB
<b>ISOLATION</b>	
NARROWBAND - WIDEBAND	>30 dB
<b>WIDEBAND - NARROWBAND @</b>	
	± 0.97 MHz >30 dB
	± 1.75 MHz >36 dB
	± 2.2 MHz >50 dB
	± 3.0 MHz >70 dB
NB GROUP DELAY VARIATION	<300 ns
NB MAX INPUT POWER RATING**	100 W / 11 dB (crest factor)
TEMPERATURE RISE	<6.1 °C / 50 W
MASK COMPLIANT	Uncritical mask



\* Data in table is typical data at 200 MHz. To fulfil mask transmitter shoulder level must be >36 dB. The combiner can be tuned for other specifications or bandwidth. Please contact us for a designed specification.  
 \*\* Max power rating at <50 °C temprice at max frequency.Data are subjected to change without prior notice.