

FM Bandpass filter

25 kW, 3 Pole

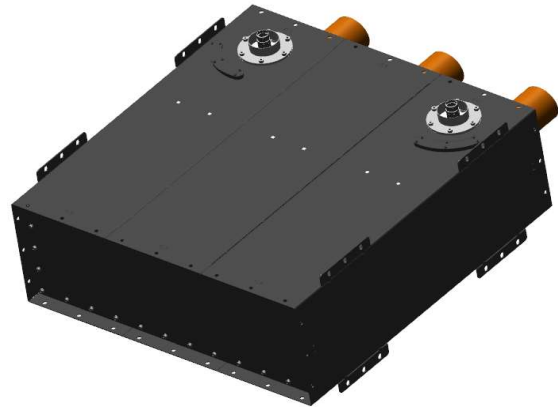
BAND II



PRODUCT FEATURES

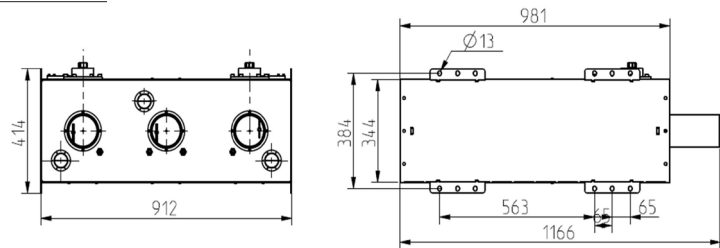
- Flexible design
- Retunable 87 - 108 MHz
- Low insertion loss
- Temperature compensated
- 10-year comprehensive warranty

| SPECIFICATIONS | 350 mm Series | Option |
|-------------------------|---------------------------------------|--------------------------------------|
| FREQUENCY | 87 - 108 MHz | - |
| STANDARD ORDER | 3 poles | with temperature compensation |
| IMPEDANCE | 50 Ohm | - |
| TEMPERATURE STABILITY | < 3 kHz / °C (without temp. comp.) | < 0,5 kHz / °C (with temp. comp.) |
| MAX PRODUCT TEMPERATURE | 70 °C | - |
| ENVIORNMENTAL CONDITION | 0 to 70 °C IP40 | - |
| CONNECTIONS | 3 1/8" unflange | 4 1/2" unflange |

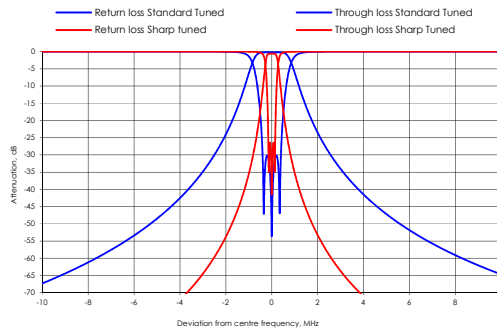
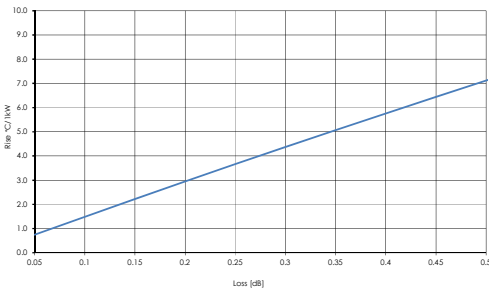


DIMENSIONS AND WEIGHT

| | |
|----------------|--|
| DIMENSIONS | 1166 x 912 x 414 mm (45.9 x 35.9 x 16.3 in) |
| WEIGHT | 53 kg (116.8 lb) |
| STANDARD FRAME | Stand alone |
| COLOUR | Frosted black |



Temperature rise Loss /Power



Article structure:

ARTICLE: BPF23C35B-OP33

- BPF**= Filter Type
- 2** = Frequency band
- 3** = Number of poles
- C** = Cavity based
- 35** = Cavity size
- B** = Version
- B= without temp. comp.
- C= with temp. comp.
- 0** = Number of cross coupling
- P** = Coating
- 3** = Input connection
3= 3 1/8" unflange, 4= 4 1/2" unflange
- 3** = Output connection
3= 3 1/8" unflange, 4= 4 1/2" unflange

| TYPICAL DATA* | Standard tuned | Sharp tuned |
|--------------------------------|-------------------------|------------------|
| ARTICLE NO | BPF23C35x-0Pxx | BPF23C35x-0Pxx |
| RETURN LOSS (VSWR) | >30 dB (<1.07) | >25 dB (<1.10) |
| INSERTION LOSS | | |
| Centre frequency | <0.15 dB | <0.40 dB |
| Effective passband @ ± 200 kHz | <0.15 dB | <0.40 dB |
| ± 150 kHz | <0.15 dB | <0.50 dB |
| ± 200 kHz | <0.15 dB | <0.90 dB |
| ± 0.8 MHz | >2.0 dB | >29.0 dB |
| ± 1.0 MHz | >6.0 dB | >35.0 dB |
| ± 1.2 MHz | >10.0 dB | >39.0 dB |
| ± 1.5 MHz | >15.0 dB | >45.0 dB |
| ± 2.0 MHz | >22.0 dB | >50.0 dB |
| ± 2.5 MHz | >28.0 dB | >55.0 dB |
| ± 3.0 MHz | >33.0 dB | >60.0 dB |
| GROUP DELAY VARIATION | | |
| ± 150 kHz | <6 ns (5 ns) | <235 ns (230 ns) |
| (typical) | ± 200 kHz <10 ns (8 ns) | <455 ns (450 ns) |
| MAX INPUT POWER RATING** | 25 kW rms | 8 kW rms |
| TEMPERATURE RISE | 2.0 °C / kW | 6.0 °C / kW |

* Data in table is typical data at 100 MHz. The filter can be tuned for other specification or bandwidth, please contact us for a designed specification.

** All average power values and technical data refer to an ambient temperature of + 20 °C with normal air flow. The product can have a maximum surface temperature of + 70 °C. Maximum power capacity may be lower depending on channel allocation. Data are subjected to change without prior notice.