

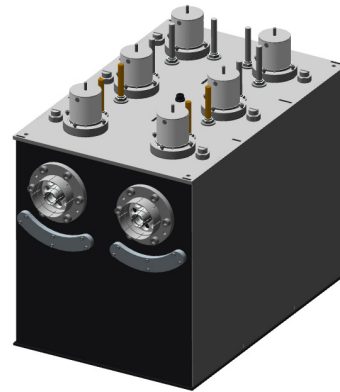
# VHF Bandpass filter

5 kW rms, 6 Pole



## PRODUCT FEATURES

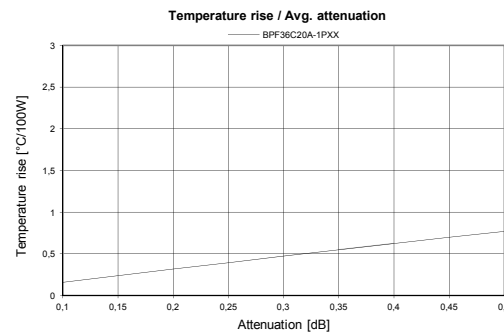
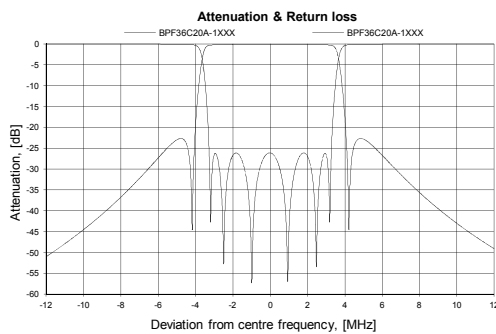
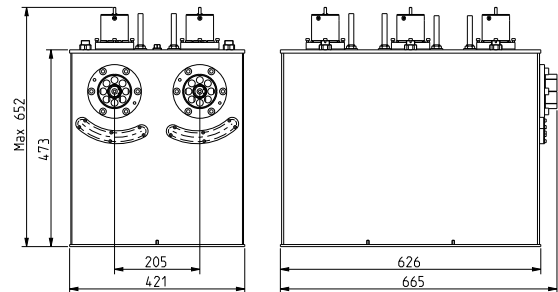
- Compact design
- Retunable
- Low insertion loss
- Temperature compensated
- 10-year comprehensive warranty



SPECIFICATIONS	100 mm Series	Option
FREQUENCY	174 - 230 MHz	-
BANDWIDTH	7 - 8 MHz	6 MHz at request
STANDARD ORDER	6 poles, Single cross coupling	Without cross coupling
DVB	Non Critical Mask	-
ATSC 6MHz	-	-
ISDB 6MHz	-	-
IMPEDANCE	50 Ohm	-
RETURN LOSS (VSWR)	>26 dB (<1.1)	-
TEMPERATURE STABILITY	< 2 kHz / °C	-
MAX PRODUCT TEMPERATURE	70 °C	-
ENVIRONMENTAL CONDITION	-5 to 70 °C IP40	-
CONNECTIONS	3 1/8" unflange (male)	1 5/8" unflange

## DIMENSIONS AND WEIGHT

DIMENSIONS	665 x 421 x max 652 mm
L x W x H	(26.2 x 16.6 x max 25.7 in)
WEIGHT	40 kg (88 lb)
STANDARD FRAME	Stand alone
OPTIONAL FRAME	19" frame
COLOUR	Frosted black



## Article structure: ARTICLE: BPF36C20A-1PKK

- BPF** = Filter Type  
**3** = Frequency band  
**6** = Number of poles  
**C** = Cavity based  
**20** = Cavity size  
**A** = Version  
**1** = Number of cross coupling  
*0* = without, *1* = single  
**P** = Coating  
*P* = painted  
**K** = Input connection  
*l* = 1 5/8" unflange, *K* = 3 1/8" unflange male  
**K** = Output connection  
*l* = 1 5/8" unflange, *K* = 3 1/8" unflange male

TYPICAL DATA*	8 MHz DVB-T	7 MHz DVB-T	-
ARTICLE NO	BPF36C20A-1Pxx	BPF36C20A-1Pxx	
<b>INSERTION LOSS</b>			
Avg. signal bandwidth	<0.15 dB	<0.17 dB	
Centre frequency	<0.12 dB	<0.13 dB	
Signal band edge	± 3.8 MHz <0.39 dB ± 4.2 MHz >4.00 dB ± 6.0 MHz >16.0 dB ± 12.0 MHz >41.0 dB	± 3.33 MHz <0.41 dB ± 3.70 MHz >4.00 dB ± 5.25 MHz >16.0 dB ± 10.5 MHz >41.0 dB	
GROUP DELAY	<285 ns	<300 ns	
MAX INPUT POWER RATING**	5 kW / 13 dB (crest factor)	5 kW / 13 dB (crest factor)	
TEMPERATURE RISE	<0.2 °C / 100 W	<0.3 °C / 100 W	
MASK COMPLIANT	Non Critical Mask	Non Critical Mask	

\* Data in table is typical data at 205 MHz. To fulfil mask transmitter shoulder level must be >36 dB. The filter can be tuned for other specification or bandwidth, please contact us for a designed specification. \*\* Max input power at <50 °C temprice at max frequency. Data are subjected to change without prior notice.