

UHF Bandpass filter, liquid cooled

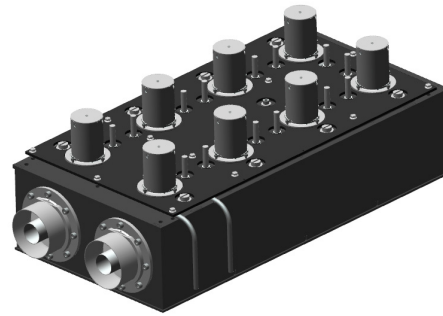
12,5 kW rms, 8 Pole

BAND IV-V

10
year
GUARANTEE

PRODUCT FEATURES

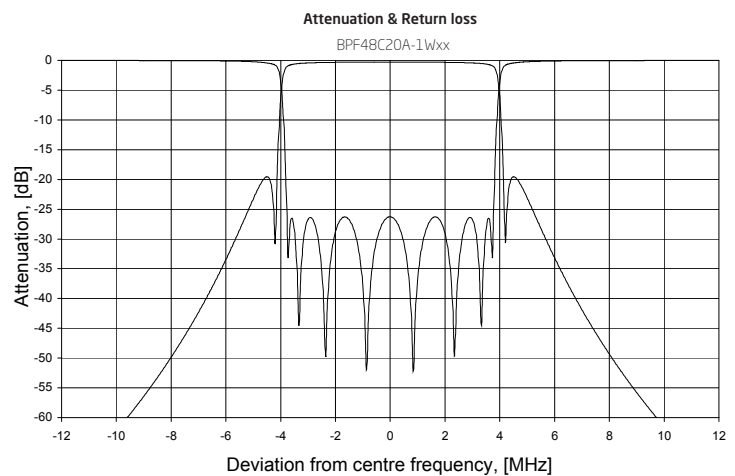
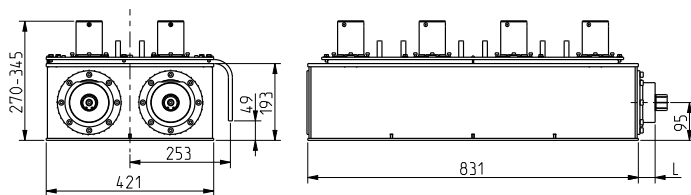
- Small size
- Retunable
- Compact design
- Low insertion loss
- Temperature compensated
- Available with cross-coupling
- 10-year comprehensive warranty



SPECIFICATIONS	200 mm Series
FREQUENCY	470 - 862 MHz
BANDWIDTH	6 - 8 MHz
STANDARD ORDER	8 Poles single cross coupling
OPTIONAL ORDER	8 Poles with or without double cross coupling
ATV	Spurious suppress
DVB	Critical mask
ATSC	Stringent mask
ISDB	Critical mask
IMPEDANCE	50 Ohm
VSWR	>26 dB (<1.11)
TEMPERATURE STABILITY	< 2 kHz / °C
MAX PRODUCT TEMPERATURE	70 °C
ENVIROMENTAL CONDITION	-5 to 70 °C IP40
STANDARD CONNECTION	3 1/8" unflange
OPTIONAL CONNECTIONS	1 5/8" unflange, 4 1/2" unflange
COOLING LIQUID PIPE CONNECTION	Ø10 mm (other upon request)
LIQUID FLOW	10 l/min (2.5 gal liq./min)
COOLING LIQUID TEMPERATURE	<=50°C (<=122°F)
LIQUID TEMPERATURE RISE @ 10KW	1.5°C (2.7°F)

DIMENSIONS AND WEIGHT

DIMENSIONS	881 x 421 x 270-345 mm
L x W x H	(34.7 x 16.6 x 10.6-13.6 in)
WEIGHT	50 kg (110 lb)
STANDARD FRAME	Stand alone
OPTIONAL FRAME	19" subrack
COLOUR	Frosted black



ARTICLE: BPF48C20A-1W33

- BPF** = Filter type
4 = Frequency band
8 = Number of poles
C = Cavity based
20 = Cavity size
A = Version
1 = Number of cross coupling
0 = without, 1 = single
W = Coating and cooling
W = blackpainted, silverplated and liquid cooled
1 = Input connection
1 = 1 5/8" unflange, 3 = 3 1/8" unflange, 4 = 4 1/2" unflange
1 = Output connection
1 = 1 5/8" unflange, 3 = 3 1/8" unflange, 4 = 4 1/2" unflange

TYPICAL DATA*	8 MHz DVB-T/2	6 MHz ISDB-T	6 MHz ATSC
ARTICLE NO	BPF48C20A-1Wxx	BPF48C20A-1Wxx	BPF48C20A-1Wxx
INSERTION LOSS			
Avg. signal bandwidth	<0.41 dB	<0.49 dB	<0.37 dB
Centre frequency	<0.29 dB	<0.38 dB	<0.34 dB
Signal band edge	± 3.88 MHz <2.0 dB (3,8 MHz 1,18 dB) ± 4.2 MHz >15 dB ± 6.0 MHz >26 dB ± 12.0 MHz >51 dB	± 2.79 MHz <1.11 dB ± 3.15 MHz >15 dB ± 4.5 MHz >31 dB ± 9.0 MHz >61 dB	± 2.69 MHz <0.49 dB ± 3.5 MHz >1.10 dB ± 6.0 MHz >29 dB ± 9.0 MHz >63 dB
GROUP DELAY	<850 ns	<500 ns	<110 ns
MAX INPUT POWER RATING**	12.5 kW / 13 dB (crest factor)	12.5 kW / 13 dB (crest factor)	12.5 kW / 11 dB (crest factor)
MASK COMPLIANT	Critical mask	Critical mask	Stringent mask

* Data in table is typical data at 666 MHz. To fulfil mask transmitter shoulder level must be >36 dB. The filter can be tuned for other specifications or bandwidth. Please contact us for a designed specification.
 ** Max input power at max frequency and with above cooling liquid flow and temperature. Change in the liquid flow and temperature can also change the actual power rating.