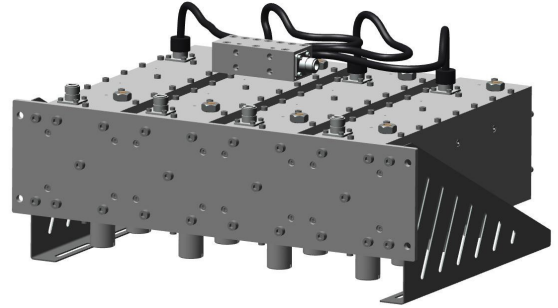


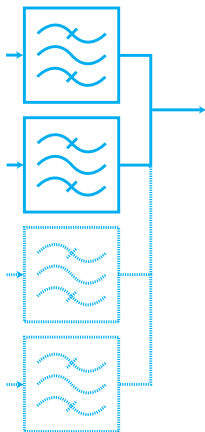
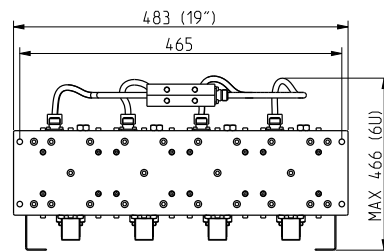
VHF Airband Starpoint Combiner

75 W, 4 Pole

SPECIFICATIONS	70 mm Series	Option
FREQUENCY	118 - 136 MHz	Other tunings at request
STANDARD ORDER	4 Poles	
IMPEDANCE	50 Ohm	
NB RETURN LOSS (VSWR)	>25 dB (1.12)	
NB INPUT CONNECTOR	N female	N male
OUTPUT CONNECTOR	N female	N male
TEMPERATURE STABILITY	≤ 5 kHz / °C	
MAX PRODUCT TEMPERATURE	70 °C	
ENVIROMENTAL CONDITION	0 to 70 °C IP40	

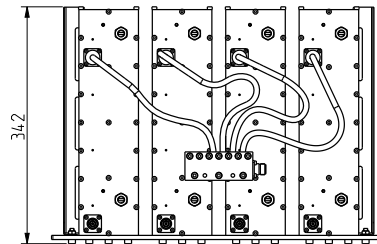


DIMENSIONS AND WEIGHT	
INDICATIVE DIMENSIONS	483 x 342 x 466 mm
L x W x H	(19 x 13.5 x 18.3 in)
STANDARD FRAME	19" front panel
OPTIONAL FRAME	Stand alone, Mounting brackets
COLOUR	Aluminium gray



Article structure: ARTICLE: SPA4C07A-00CC-2

SP = Combiner Type
A = Frequency band
A = Air band
4 = Number of poles
C = Cavity based
07 = Cavity size
A = Version
0 = Number of cross coupling
0 = without
0 = Coating
0 = Without coating
C = Narrowband connection
C = N female, D= N male
C = Output connection
C = N female, D= N male
2 = Number of inputs



Example of design, may be changed depending on channel allocation and No of inputs.
Subjected to change without prior notice.

ARTICLE	SPA4C07x-00xx-2			SPA4C07x-00xx-3			SPA4C07x-00xx-4		
NUMER OF INPUTS	2			3			4		
MIN CHANNEL SPACING	5.0 MHz	3.0 MHz	1.5 MHz	5.0 MHz	3.0 MHz	1.5 MHz	5.0 MHz	3.0 MHz	1.5 MHz
MAX INPUT POWER / INPUT	110 W	95 W	55 W	110 W	95 W	55 W	110 W	95 W	55 W
INSERTION LOSS (dB)									
Centre frequency	<1.30	<1.60	<3.20	<1.35	<1.65	<3.20	<1.35	<1.65	<3.20
ISOLATION BETWEEN INPUTS									
Input frequency spacing									
	>60 dB @ ±5.0 MHz	>50 dB @ ±3.0 MHz	>50 dB @ ±1.5 MHz	>60 dB @ ±5.0 MHz	>50 dB @ ±3.0 MHz	>50 dB @ ±1.5 MHz	>60 dB @ ±5.0 MHz	>50 dB @ ±3.0 MHz	>50 dB @ ±1.5 MHz
	>85 dB @ ±10.0 MHz	>75 dB @ ±6.0 MHz	>75 dB @ ±3.0 MHz	>85 dB @ ±10.0 MHz	>75 dB @ ±6.0 MHz	>75 dB @ ±3.0 MHz	>85 dB @ ±10.0 MHz	>75 dB @ ±6.0 MHz	>75 dB @ ±3.0 MHz
	>95 dB @ ±15.0 MHz	>89 dB @ ±9.0 MHz	>89 dB @ ±4.5 MHz	>95 dB @ ±15.0 MHz	>89 dB @ ±9.0 MHz	>89 dB @ ±4.5 MHz	>95 dB @ ±15.0 MHz	>89 dB @ ±9.0 MHz	>89 dB @ ±4.5 MHz
WEIGHT	9 kg (19.8 lb)			13 kg (28.7 lb)			17 kg (37.5 lb)		

* Data in table is typical data at 127 MHz. The combiner can be tuned for other specifications or bandwidth. Please contact us for a designed specification.

** All average power values and technical data refer to an ambient temperature of +20 °C with normal airflow. The product can have a maximum surface temperature of +70 °C. Maximum power capacity may be lower depending on channel allocation. Data are subjected to change without prior notice.