

# KIRK DOUGLAS THEATRE

## 2018/19 SEASON

FIRST SEASON PRODUCTION

### **SCHOOL GIRLS**

*Or, the African Mean Girls Play*

By Jocelyn Bioh

Directed by Rebecca Taichman

Sep 2–30, 2018

SECOND SEASON PRODUCTION

### **QUACK**

By Eliza Clark

Directed by Neel Keller

World Premiere

Oct 21 – Nov 18, 2018

THIRD SEASON PRODUCTION

### **BLOCK PARTY**

Celebrating Los Angeles Theatre

Mar 7 – Apr 28, 2019

THEATRE OF NOTE

### **FOR THE LOVE OF**

*(or, the roller derby play)*

By Gina Femia

Directed and Choreographed by Rhonda Kohl

Mar 7–17, 2019

SKYLIGHT THEATRE COMPANY

### **ROTTERDAM**

By Jon Brittain

Directed by Michael A. Shepperd

Mar 28 – Apr 7, 2019

ANTAEUS THEATRE COMPANY

### **NATIVE SON**

By Nambi E. Kelley

Based on the Novel by Richard Wright

Directed by Andi Chapman

Apr 18–28, 2019

FOURTH SEASON PRODUCTION

### **DANA H.**

By Lucas Hnath

Adapted from Interviews with  
Dana Higginbotham

Conducted by Steve Cosson

Directed by Les Waters

World Premiere

May 26 – Jun 23, 2019



# BLOCK PARTY 2019

CELEBRATING LOS ANGELES THEATRE

THEATRE OF NOTE

## FOR THE LOVE OF

(OR, THE ROLLER DERBY PLAY)

BY  
GINA FEMIA

DIRECTED & CHOREOGRAPHED BY  
RHONDA KOHL

MAR 7–17



(L-R) Crystal Peaz, Lynn O'Neil, Rhina Phelan, and Rhonda Kohl. Photo by Darrett Sanders.

SKYLIGHT THEATRE COMPANY

## ROTTERDAM



(L-R) Ryan Murphy, Ashley Roman, Miranda Wynn, and Audrey Cain. Photo by Ed Krieger.

BY  
JON BRITTAIN

DIRECTED BY  
MICHAEL A. SHEPPERD

MAR 28 – APR 7

ANTAEUS THEATRE COMPANY

## NATIVE SON

BY  
NAMBI E. KELLEY

BASED ON THE NOVEL BY  
RICHARD WRIGHT

DIRECTED BY  
ANDI CHAPMAN

APR 18–28

Noel Arthur. Photo by Geoffrey Wade Photography.



friend.  
insider.  
visionary.

you!

INTRODUCING A NEW MEMBERSHIP EXPERIENCE  
AT CENTER THEATRE GROUP

As a nonprofit organization, Center Theatre Group relies on the philanthropy of people just like YOU.

Your tax-deductible contribution of \$100 or more helps ensure that Center Theatre Group continues to bring the highest quality theatre to our community. And, as a member, you will unlock benefits that enhance your theatregoing experience, from behind-the-scenes members-only events to the best seats in the house—and more!

Learn more at [CTGLA.org/membership](http://CTGLA.org/membership)

**QUESTIONS?**

Call our Membership Concierge at 213.972.7564 or email [membership@CTGLA.org](mailto:membership@CTGLA.org)

**friends**

Friends get first access to tickets before the general public plus invitations to members-only events, including backstage tours and rehearsals. *Join today with a gift of \$100 or more.*

**insiders**

Insiders enjoy a year-round VIP experience with access to the best seats for our shows, concierge service for house seats at New York and London productions, and special behind-the-scenes events. *Join today with a gift of \$2,500 or more.*

**visionaries**

Visionaries have the ultimate access to our artists, shows, programs, and staff, with premium seating for our productions, including use of The Founders' Room at the Ahmanson, and invitations to private salon-style artist events. *Join today with a gift of \$15,000 or more.*



MICHAEL RITCHIE Artistic Director | DOUGLAS C. BAKER Producing Director  
GORDON DAVIDSON Founding Artistic Director

Presents the *note* production of

**FOR THE LOVE OF**  
(OR, THE ROLLER DERBY PLAY)

Written by

**Gina Femia**

With (in alphabetical order)

Diaz de los Muertos.....CRYSTAL DIAZ  
Michelle.....ELINOR GUNN  
Squeaky Mouse.....LIESEL HANSON  
Trauma Queen.....FAITH IMAFIDON  
Jammy From The Block.....CINDY LIN  
Frida Call-It-Low.....NADIA MARINA  
Hot Flash.....LYNN ODELL  
Andrea the Vagiant.....ALINA PHELAN  
Joy Ride.....BRIANA PRICE  
Ruth Bader Getsit.....NICOLE GABRIELLA SCIPIONE  
Anna-Stecia.....YOLANDA SNOWBALL  
Prosecute-Her.....JENNY SOO  
Maid of Metal.....NANCY STONE  
Lizzie Lightning.....TANIA VERAFFIELD



Scenic Design

**Eli Smith**

Center Theatre Group  
Associate Producer

**Lindsay Allbaugh**

Costume Design

**Vicki Conrad**

Production Stage Manager

**Brooke Baldwin**

Lighting Design

**Rose Malone**

Stage Manager

**Maggie Swing**

Sound Design

**Gilly Moon**

Originally Produced for Theatre of NOTE by

**David Bickford, Kelly “Lucretia Hott” Lingen, Jenny Soo**

Directed & Choreographed by

**Rhonda Kohl**

*For The Love Of* will be performed with an intermission.

**MARCH 7–17, 2019 KIRK DOUGLAS THEATRE**

*For The Love Of (or, the roller derby play)* received its World premiere by Pride Films & Plays 2017—David Zak, Executive Director

Block Party receives major support from Aliza and Marc Guren, with generous funding also provided by Joni and Miles Benickes, and additional support provided by Kiki and David Gindler. Block Party is also made possible in part by a Culver City Performing Arts Grant with support from Sony Pictures Entertainment.

## WHO'S WHO



**CRYSTAL DIAZ** (*Diaz de los Muertos*). A NOTE member since 2011, Crystal served on the Artistic & Management Committee and is currently the Membership Chair. Productions at Theatre of NOTE include: *Cleo, Theo & Wu; For The Love Of (or, the roller derby play); Hot Cat; Niagara Falls; Shoe Story; Figure 8; and Skeleton*

*Stories*. She is a member of Theatre Movement Bazaar, an associate member of Sacred Fools, and has performed in New York, Chicago, London, and Edinburgh. She is a native New Yorker and a trained ballet/flamenco dancer. Special thanks to husband, Alexis DeLaRosa, Ziggy & Penny, and all of the strong women who hold her up.



**ELINOR GUNN** (*Michelle*) is delighted to be cast alongside such talented actors in this honest, heartfelt play. Notable performances in Seattle: US premiere of *Sugar Daddies*, written and directed by Sir Alan Ayckbourn; Olivia in *Twelfth Night* and Cordelia in *King Lear* with Seattle Shakespeare Company; and just last fall, Kyra in a successful run

of *Skylight* at ACT Theatre. In L.A., she is a proud company member of Theatre of NOTE. *For The Love Of* will mark Elinor's Kirk Douglas Theatre debut. Many thanks to Center Theatre Group for this opportunity. She hopes you continue to support local theatre, and enjoy the show!



**LIESEL HANSON** (*Squeaky Mouse*) is a company member at Theatre of NOTE and is so happy to be back in *For The Love Of!* She is a native Californian who has performed onstage in Los Angeles, Las Vegas, New York, and Edinburgh. Previous credits include the Lionsgate horror film *Children of Sorrow* and the original cast of

*Re-Animator the Musical*. You can also catch her in the action/thriller feature *Happy Hunting* (now streaming on Netflix). Thanks to everyone who helped bring me into the Scallywags family; I love this team and all of you.



**FAITH IMAFIDON** (*Trauma Queen, Understudy for Joy Ride, Squeaky Mouse*) is a proud first-generation Nigerian and Boston native. She holds both an MFA in acting and BA in English from Harvard University. Favorite past performances include: *Cut* (Nurse Ogotu)—Casa 0101; *The Fertile River* (River)—Baylor University's Mabey

Theatre; *And Then They Fell* (Crystal)—Brimmer Street Theatre; and *The Last Days of Judas Iscariot* (Saint Monica)—The Hudson Theatre. When not onstage, Faith enjoys dance

battles and trolling Epicurious for recipes. She is honored to work on the Kirk Douglas Theatre stage as she reunites with her lovely, badass female cast! Find more Faith at [faithimafidon.com](http://faithimafidon.com). Follow @fidosaurus



**CINDY LIN** (*Jammy From The Block, Understudy for Prosecute-Her*) can't believe she gets to skate with her favorite roller derby women again. Original cast of Theatre of NOTE's West Coast premiere of *For The Love Of*. UCLA graduate and HOOLIGAN Theatre Company alumna. Past HTC credits include *The Wedding Singer, Legally Blonde,*

*Titanic, Curtains, and Urinetown*. Always singing, dancing, kicking, or teaching. Thank you to Theatre of NOTE and everyone that pushed this show forward. Much heartfelt appreciation for my teachers and friends. Special thanks to my family—I'm forever grateful. For everyone that chases after the love of the game.



**NADIA MARINA** (*Frida Call-It-Low, Understudy for Diaz de los Muertos, Lizzie Lightning*) is back again for Block Party, but this time onstage. Her work as an #actormama includes Nina in *Possum Carcass*, Tyler in *Some Girl(s)*, and Christina in *Tree of Hope*, to name a few. She is also a producer and has worked on productions

at the Echo Theater Company as well as Theatre of NOTE. Newly a mom of two, Nadia thanks her family and the cast for sharing her nicely. More info can be found at [nadiamarina.com](http://nadiamarina.com).



**LYNN ODELL** (*Hot Flash*) has acted, directed, and produced in New York, San Francisco, and Los Angeles. She was a member of the Actors' Playhouse in N.Y., Dude Theatre in San Francisco, and has been with the critically acclaimed Theatre of NOTE in L.A. for almost 20 years. She has also had the privilege of working at Sacred Fools Theater

and Elephant Theatre companies. Her TV credits include *Criminal Minds, Law & Order*, and the PBS children's series *Steps*. She is in the independent films *Gypsies, Tramps & Thieves, Have You Seen Me?, Pariah, The Lost One*, and *Kill Me, Deadly*.



**ALINA PHELAN** (*Andrea the Vagiant*). Credits: ICT: *Dead Man's Cell Phone, All in the Timing*; Chalk Rep: *Family Planning*; Circle X: *Lascivious Something*; Open Fist: *All Night Long, Love Water*; Theatre of NOTE: *Rio Hondo, Entropy, Niagara Falls, Hamlet, The First Quarto* (winner—Garland Award),

*I Wanna Hold Your Hand, Disassembly, and Hearts Like Fists*. TV: *How to Get Away with Murder, Grey's Anatomy, Shameless, Criminal Minds*, among others. Thank you to David Bickford, Rhonda, and all the ladies on the team who make this show epic. The biggest thanks to Center Theatre Group for creating Block Party and inviting us to play in your arena.



**BRIANA PRICE** (*Joy Ride*) was born and raised in Pasadena, California. She studied at Columbia University in the city of New York, where she was preparing to be a doctor. However, her love for the arts took over and steered her in the direction of professional dance and theatre. Briana has toured with Nicki Minaj, performed on *Glee* and *The Neighbors*, onstage in *Tempest Redux* as Ariel, *All My Distances Are Far* as Ruby, *Future Sex, Inc.* as an ensemble member, and most recently *Lysistrata Unbound* as a female chorus member.



**NICOLE GABRIELLA SCIPIONE** (*Ruth Bader Getsit, Understudy for Michelle, Andrea the Vagiant*). Regional (selected): *Disgraced* (PlayMakers Repertory Company); *32 Beds* (South Coast Repertory, Culture Clash); *Greenhouse* (The Pasadena Playhouse); *Night Sky* and *A Piece of My Heart* (La Jolla Playhouse/Mo'olelo);

*The Miracle Worker* (Sierra Repertory Theatre); *Bus Stop* (Met Theatre); *The Crucible* (StageSceneLA's Best Performance by a Featured Actress). Film/TV (selected): *CSI, Shark Swarm* (Spike TV), *Detective* (TNT), *Felder's Choice* (opposite Chad Lowe), *McBride: Dogged, Monster Makers, Arrest & Trial*, Justine Bateman's *Five Minutes, PUSH*, and Nicole's *Song in a Convenience Store* (third place—Oscar qualifying Athens International Film Festival). Grateful for you. More at [IMDb](http://IMDb) & [resumes.actorsaccess.com/ngs](http://resumes.actorsaccess.com/ngs).



**YOLANDA SNOWBALL** (*Anna-Stecia*) is excited to recreate the role of Anna-Stecia in *For The Love Of (or, the roller derby play)*. Yolanda is a graduate of Spelman College in Atlanta, Georgia, and has studied at the Neighborhood Playhouse in New York City as well as the American Conservatory

Theater in San Francisco. Yolanda's theatre credits include work with Theatre of NOTE, The Actors' Gang, Ensemble Studio Theatre LA, and Lower Depth Theatre Ensemble. Her television credits include *This Is Us, NCIS, Good Trouble*, and *Jane the Virgin*. Yolanda is honored to be a part of Block Party. Yolanda would like to thank her husband and son for their love and support.



**JENNY SOO** (*Prosecute-Her*). Favorite L.A. theatre credits: *Hot Cat, D Deb Debbie Deborah, Dry Land, and Gloria*, which was recently mentioned by the *Los Angeles Times* as one of the best of L.A. theatre productions of 2018. TV: *Parks and Recreation, LA to Vegas, Reverie*. Her passion project, award-winning feature film

*FOR IZZY*, is currently finishing its festival run and is available on VOD: [forizzy.com](http://forizzy.com). BFA: NYU. MFA: A.R.T./MXAT Institute for Advanced Theater Training at Harvard.



**NANCY STONE** (*Maid of Metal, Understudy for Hot Flash, Anna-Stecia*) is thrilled to participate in Center Theatre Group's Block Party as part of Theatre of NOTE's *For The Love Of*. Los Angeles theatre includes *Washer/Dryer* at East West Players, *Tartuffe, Love's Labor's Lost*, and *Embedded* with The Actors' Gang; *Atlas Pit* and *Speech*

& *Debate* with Los Angeles New Court Theatre. Recent TV/film: *The Good Doctor, Grey's Anatomy, Speechless, The Price, Bones, How I Met Your Mother*, and Apple's untitled morning-show drama with Reese Witherspoon. Nancy has also performed as an actor/improviser in the Bay Area and NYC.



**TANIA VERAFIELD** (*Lizzie Lightning*).

Currently in A Noise Within's *Othello* as Emilia through April. L.A. theatre—A Noise Within: *Lady Henry/Gladys, A Picture of Dorian Gray*; Rogue Machine: *Carmen/Hawk, In the Valley of the Shadow*; *Jessie, Still Life*; *Kayleen* (alt), *Grotesque Playground Injuries*; *Bug*, Henry Murray's

*Treefall*. N.Y. theatre—Lincoln Center: *Melody/Rika, Beneath the Veil*; Gallery Players: *Ellen, The Little Dog Laughed*. Partial film/TV—*Ms. Purple, Alex & Jaime, I Am Not a Hipster, Short Term 12* (Sundance 2009 Best Short), *The First Time, Julia, Harsh Times, Namaste, Bitches, 24*. It's a dream come true to be making her Center Theatre Group debut—big thank you to all involved. Love IS a contact sport. For you, Dad.

**GINA FEMIA** (*Playwright*) has written 31 full-length plays which include *ALLOND(R)A* (winner; Leah Ryan Prize), *We Are a Masterpiece* (winner; Doric Wilson Award), *The Mermaids' Parade* (semifinalist; The Relentless Award), *Annie and the Fat Man* (honorable mention; The Kilroys), *For The Love Of* (Original Works Publishing), and *The Violet Sisters* (Great Plains Theatre Conference). She is the 2019 Writer-in-Residence with Spicy Witch Productions, a current member of Page 73's Interstate 73 Writers Group, and an alum of EST Youngblood, Pipeline Theatre's PlayLab, and New Georges' Audrey Residency. Gina has received residencies with Page

73, Powerhouse, NTI at the O'Neill, SPACE on Ryder Farm, and Fresh Ground Pepper.

**RHONDA KOHL** (*Director/Choreographer*) is proud to be part of the Center Theatre Group Block Party. Rhonda was the SDCF Fellow on the Broadway debut of *In Transit* (Circle in the Square) with Kathleen Marshall, whom she also worked with on *Mamma Mia!* (Hollywood Bowl), *Damn Yankees* (Roundabout Theatre Benefit Reading), and *Sweet Charity* (Reprise 2.0). She recently choreographed and assistant directed *Native Gardens* at the Pasadena Playhouse. Directing credits include: *Around the World in 80 Days* (Actors Co-op; *L.A. Times* Critic's Choice), *Pocket Universe* (Hollywood Fringe), *Look Back in Anger* (LA New Court). Assistant directing: *Ragtime* and *King Charles III* (Pasadena Playhouse), *Barbecue* and *Long Day's Journey Into Night* (Geffen Playhouse). SDC Associate Member.

**ELI SMITH** (*Scenic Designer*) is an activist, visual artist, and performance designer. She received her BA in physics from SUNY Geneseo and an MFA from CalArts in both performance design and art & technology. Eli's work expresses the psychology of precarity through constructed landscapes of potential violence. Recent productions include Lewis Klahr's 2017 film *Hearse*, Edgar Arceneaux's 2016 performance art piece *Until, Until, Until...*, and Nataki Garrett's 2018 devised work *The Carolyn Bryant Project*. Her 2018 video installation *A Continuous Thread* appeared at The Box gallery in June 2018, and her narrative installation *Tiger Play* premiered in December 2018 at CalArts.

**VICKI CONRAD** (*Costume Designer*) received the Ovation Award for Best Costume Design for *The Mystery of Edwin Drood* and nominations for *33 Variations* (Best Play, Ovation Award), *Imaginary Invalid*, *The Learned Ladies* (*L.A. Weekly* Award), and *Big River*. Favorite credits include *Anna Karenina* (Actors Co-op), *Bad Jews* (The Odyssey), *Other Desert Cities* (Theatricum Botanicum), *Jocasta: A Motherf\*\*king Tragedy* (Ghost Road), and *8:03* (Scherzo). Her *Asterion* costumes traveled to Poland's Grotowski Institute, and her custom designs/creations were in the *Project Runway* season 15 commercial. She is thrilled to get to go to Center Theatre Group's Block Party and remount *For The Love Of* with the Scallywags! vickiconraddesign.com

**ROSE MALONE** (*Lighting Designer*) received an MFA in lighting design from CalArts. Some recent productions include *Amos & Boris* at South Coast Rep, *An Undivided Heart* at Echo Theater Company, *With Love and a Major Organ* at Boston Court, and *Rachel Calof* at the Pico Union Project. Additionally, she has designed at the Edinburgh Fringe Festival and assisted with Deaf West Theatre's production of *Spring Awakening* on Broadway.

**GILLY MOON** (*Sound Designer*) is excited to be remounting *For The Love Of* at the Kirk Douglas Theatre! Gilly received her MFA in sound design from CalArts in 2016 and has been pursuing sound design in multiple mediums ever since. Favorite credits include: Halloween Horror Nights at Universal Studios Hollywood with Diablo Sound (sound media and systems design team member); *Kaidan Project: Walls Grow Thin* with Rogue Artists Ensemble (co-sound design, 2019 Ovation Award for Sound Design—Intimate Theatre). Gratitude and love to Julien for his support, and to Bash and Larry for their furry loyalty.

**BROOKE BALDWIN** (*Production Stage Manager*). Center Theatre Group: *School Girls; Or, the African Mean Girls Play, Bloodletting, Spamilton, Big Night, Good Grief, Vicuña, Disgraced, Women Laughing Alone With Salad, Kansas City Choir Boy, Girlfriend, Chavez Ravine, Luna Gale, Race, different words for the same thing, The Nether, The Convert, Second City's A Christmas Carol: Twist Your Dickens*. LA Philharmonic & The Industry: *Europaras 1 & 2*. Rio Hotel in Las Vegas: *Duck Commander Musical*. Moonlight Stage Productions: *Newsies, The Little Mermaid, The Wizard of Oz, Cats*. Cabrillo Music Theatre: *Bye Bye Birdie, In the Heights, Kiss Me, Kate*. And many more!

**MAGGIE SWING** (*Stage Manager*). Center Theatre Group: *Linda Vista, Quack, Block Party 2018, Elliot, A Soldier's Fugue, Spamilton, Big Night, King of the Yees, Block Party 2017, Vicuña, Throw Me on the Bumpile and Light Me Up*. Geffen Playhouse: *Big Sky, Barcelona, Guards at the Taj, Discord, The Country House, American Buffalo*. Boston Court: *Collective Rage*. European tour: *The Apple Family Plays*. Off-Broadway: *Regular Singing, Sorry, Love's Labour's Lost, Sweet and Sad, Knickerbocker, Compulsion, That Hopey Changey Thing* (The Public Theater), *Slowgirl* (Lincoln Center), *Blood Knot, The Orphans' Home Cycle* (Signature Theatre Company).

**THEATRE OF NOTE** is an L.A.-based nonprofit ensemble of theatre artists dedicated to creating high-caliber, original work that challenges both its artists and its audiences. Founded in 1981, its democratic, ensemble-based organization is dedicated to providing a creative environment in which collaboration and development of maverick theatre more accurately reflects L.A.'s diverse cultural makeup, thus inspiring a deeper connection with its audiences. NOTE also produces the annual Hollywood Performance Marathon, the NOTEworthy new play development workshops, and its educational outreach Young Writers Project. Stick your hand in L.A.'s NOTEorious black box theatre—you never know if you'll get licked...or bitten.

**ADDITIONAL STAFF FOR FOR THE LOVE OF**

Assistant Director.....Lauren Smerkanich  
 Assistant Choreographer.....Angeline Mirenda  
 Head Carpenter.....Ryan Howard  
 Assistant Lighting Designer.....Mary Keegan

**CREDITS**

Original Makeup Supervisor.....Nadia Marina  
 Original costumes provided by Theatre of NOTE. Additional costumes provided by the Center Theatre Group Costume Shop.

**THEATRE OF NOTE STAFF**

Board of Directors.....Katharine Crnko, Michelle Cullen, Eric Emery, John Money, Genevieve Morrill, Kirsten Vangsness  
 Artistic Management Committee.....Cat Chengery, Fiona Lakeland, Alexis DeLaRosa, Lynn Odell, Elinor Gunn, Paris Benjamin  
 Managing Director.....Hauk Graham

Special thanks to Diablo Sound. The closing song, "Ordinary Girls," is courtesy of Cheap Perfume, New York's first all-female punk band.



A selection of Block Party 2019 participants from Theatre of NOTE, Skylight Theatre Company, and Antaeus Theatre Company. Photo by Luke Fontana.



MICHAEL RITCHIE Artistic Director | DOUGLAS C. BAKER Producing Director  
GORDON DAVIDSON Founding Artistic Director

Presents the SKYLIGHT THEATRE production of

# ROTTERDAM

In association with Hartshorn – Hook Productions

Written by

**Jon Brittain**

With (in alphabetical order)

Josh.....RYAN BROPHY  
Lelani.....AUDREY CAIN  
Fiona/Adrian.....ASHLEY ROMANS  
Alice.....MIRANDA WYNNE

Scenic & Lighting Design

**Jeff McLaughlin**

Costume Design

**Naila Aladdin Sanders**

Sound Design

**Christopher Moscatiello**

Center Theatre Group  
Associate Producer

**Lindsay Allbaugh**

Production Stage Manager

**Garrett Crouch**

Stage Manager

**Mercedes L. Clanton**

Originally Produced for Skylight Theatre by

**Gary Grossman, Tony Abatemarco, Andrew Carlberg**

Directed by

**Michael A. Shepperd**

**Time:** Act One—New Year’s Eve, Present Day / Act Two—Four Months Later

**Place:** Rotterdam

**Rotterdam is performed with an intermission.**

**MARCH 28 – APRIL 7, 2019 KIRK DOUGLAS THEATRE**

Originally produced at Theatre503 in London by Hartshorn – Hook Productions.

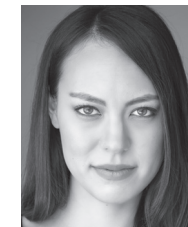
Block Party receives major support from Aliza and Marc Guren, with generous funding also provided by Joni and Miles Benickes, and additional support provided by Kiki and David Gindler. Block Party is also made possible in part by a Culver City Performing Arts Grant with support from Sony Pictures Entertainment.

## WHO’S WHO



**RYLAN BROPHY** (*Josh*) was nominated for the 2019 Ovation Award for Best Featured Actor in a Play for *Rotterdam*. L.A.: *Oppenheimer* (Rogue Machine), *Idol Minds* (Skylight), Justin Tanner’s *Little Theatre* (Fountain). USC (BA 2018): *Romeo and Juliet*, *The Country Wife*, *You Can’t Take It With You*, *That Long Damn Dark*. British American

Drama Academy (LTP 2017): *The Love of the Nightingale*. Film: *we could have danced* (Sundance Ignite), *Howler* (USC), *The Gift of the Magi* (UCLA). Multimedia: *Is the Sky Falling?* (dir. Bill T. Jones). Alumnus of YoungArts and Northwestern University’s Cherubs program. Instagram: @rybrophy. ryanbrophy.com



**AUDREY CAIN** (*Lelani*) is thrilled to be reprising the role of Lelani after an amazing run at the Skylight Theatre. Other theatre credits include East West Players’ production of *La Cage Aux Folles* (Anne) and the Fountain Theatre’s Rapid Development Series. Audrey was the proud recipient of Comcast NBCUniversal’s

inaugural Conservatory Fellowship for East West Players’ Actors’ Conservatory, as well as the recipient of the Dan Velez Fund Scholarship for Acting. Many thanks to Center Theatre Group for this incredible opportunity, and to the “Rotterfam” for the endless joy.



**ASHLEY ROMANS** (*Fiona/Adrian*) is thrilled to play in *Rotterdam* once more with the amazing Skylight family. Previous L.A. theatre credit: Celebration’s *Charm*. Recent TV credits include: *NOS4A2*, *Shameless*, *I’m Dying Up Here*, *Are You Sleeping*. Web series: *HGQLC*. Education: Pace School of Performing Arts class of 2015, BA—theatre

arts. Romans is represented by Schumacher Management.



**MIRANDA WYNNE** (*Alice*) is thrilled to be reviving her all-time favorite role of Alice for Block Party 2019. Last year, Miranda was nominated for Best Lead Performance by the Los Angeles Drama Critics Circle and Stage Raw. Born and raised in Los Angeles, she received her BA in theatre from UC San Diego. Some favorite credits include

*Oppenheimer* (Rogue Machine Theatre), *Punk Rock* (Odyssey Theatre Ensemble), and *Three Sisters* (La Jolla Playhouse). She would like to thank Center Theatre Group and Skylight Theatre for this opportunity and her grandma Addie for being her #1 fan. mirandamwynne.com @mirandamwynne

**JON BRITAIN** (*Playwright*) received the Olivier Award in 2017 for Outstanding Achievement in an Affiliate Theatre and was also nominated for the Evening Standard Award for Most Promising Playwright. His other work includes *The Wake*, *What Would Spock Do?*, the Fringe First Award-winning musical *A Super Happy Story (About Feeling Super Sad)*, and the cult hit *Margaret Thatcher Queen of Soho*. Brittain also directs stand-up comedy and has twice won the Edinburgh Comedy Award for his shows with John Kearns. He has written for Cartoon Network’s *The Amazing World of Gumball* and is currently a staff writer on *The Crown*.

**MICHAEL A. SHEPPERD** (*Director*). Artistic Director of L.A.’s award-winning Celebration Theatre. Recent directing credits: *The Boy from Oz* (awards: Ovation, LADCC), *Rotterdam* (awards: LADCC—Best Production, Stage Raw—Best Production), *Laughter on the 23<sup>rd</sup> Floor* (Scenie—Director of the Year, BWW—nom, Best Director); *The View Upstairs* (BWW Award—Best Director). Assistant Director for *Sweat* (Mark Taper Forum). Acting credits: *Fences* (Troy; Ovation, LADCC noms), *BootyCandy* (LADCC nom, Ovation, Stage Raw win), *The Color Purple* (Mister; Ovation Award), *Steel* (Ovation Award), *Intimate Apparel* (NAACP Theatre Award). Broadway/regional credits: *Cathy Rigby is Peter Pan*, *The Seafarer*, *Little Shop of Horrors*. TV: *Curb Your Enthusiasm*, *Soul Man*, *Hot In Cleveland*.

**JEFF McLAUGHLIN** (*Scenic & Lighting Designer*) works across most industries in which design is called for: film, television, commercials, corporate events, music videos, concerts, and escape rooms; however, his first love continues to be theatre. Recent notable works include *Stupid Kid* at The Road Theatre (Ovation nominee), *Cult Of Love* with IAMA Theatre Company, the feature film *Snapshots* directed by Melanie Mayron, and *Evel Live* for The History Channel. He is very proud to be working on *Rotterdam* once again with the same amazing people as last time and some new ones to boot!

**NAILA ALADDIN SANDERS** (*Costume Designer*). Credits include *Citizen: An American Lyric* by Claudia Rankine; *Neighbors* by Branden Jacobs-Jenkins; *The Brothers Size* and *In the Red and Brown Water* by Tarell Alvin McCraney; *Gem of the Ocean*, *Joe Turner’s Come and Gone*, *Jitney*, and *The Piano Lesson* by August Wilson. *Anna Lucasta*, *Bronzeville*, *The Color Purple* (musical), *The Ballad of Emmett Till*, *The Women of Brewster Place* (musical), *For the Love of Freedom*, and *The Haitian Trilogy* are some of her other costume design credits. Naila is the recipient of a Drama Critics Circle and three NAACP Awards.

**CHRISTOPHER MOSCATIELLO** (*Sound Designer*). Recipient of the 2018 LADCC and 2015 Stage Raw Awards for Sound Design, Christopher Moscatiello is also a composer, sound editor/mixer, and music director for theatre, television, and



MICHAEL RITCHIE Artistic Director | DOUGLAS C. BAKER Producing Director

GORDON DAVIDSON Founding Artistic Director

Presents the **ANTAEUS** production of

*Theatre Company*

# NATIVE SON

Written by

**Nambi E. Kelley**

Based on the Novel by

**Richard Wright**

With (in alphabetical order)

**The Black Rat**.....NOEL ARTHUR  
**Mrs. Dalton**.....GIGI BERMINGHAM  
**Bigger**.....JON CHAFFIN  
**Mary**.....ELLIS GREER  
**Jan**.....MATTHEW GRONDIN  
**Bessie, Vera**..... MILDRED MARIE LANGFORD  
**Britten**.....NED MOCHEL  
**Hannah**.....VICTORIA PLATT  
**Buddy**.....BRANDON RACHAL

Scenic Design

**Edward E. Haynes Jr.**

Costume Design

**Wendell C. Carmichael**

Lighting Design

**Andrew Schmedake**

Sound Design

**Jeff Gardner**

Projection Design

**Adam R. Macias**

Center Theatre Group  
Associate Producer

**Lindsay Allbaugh**

Production Stage Manager

**Taylor Anne Cullen**

Stage Manager

**Maggie Swing**

Directed by

**Andi Chapman**

**TIME:** A split-second inside Bigger's mind, when he runs from his crime, remembers, imagines, two cold and snowy winter days in December 1939 and beyond.

**PLACE:** A labyrinth of Chicago's black belt and surrounding areas as it appears in Bigger's mind.

***Native Son* is performed without an intermission.**

**APRIL 18–28, 2019 KIRK DOUGLAS THEATRE**

Original stage adaptation by Paul Green and Richard Wright and produced in arrangement with the Paul Green Foundation—www.paulgreen.org. The World premiere production of *Native Son* was produced by Court Theatre—Charles Newell, Artistic Director; Stephen J. Albert, Executive Director; and American Blues Theater—Gwendolyn Whiteside, Producing Artistic Director.

Block Party receives major support from Aliza and Marc Guren, with generous funding also provided by Joni and Miles Benickes, and additional support provided by Kiki and David Gindler. Block Party is also made possible in part by a Culver City Performing Arts Grant with support from Sony Pictures Entertainment.

and UK tour), and *Woody Sez* (Arts). In 2019, their production of *Amélie* will tour the UK and Asia, *Rotterdam* will return to the UK and US, and Dolly Parton's musical *9 to 5* will open at The Savoy Theatre. Louis and Brian hold the positions of Executive Director and Operations Director at the Arts Theatre in the West End.

### ADDITIONAL STAFF FOR *ROTTERDAM*

Assistant Directors.....Shen Heckel, Shaina Rosenthal  
Marketing Consultant and  
Engagement Facilitator.....Joshua Gershick  
Fight Director.....Matt Orduña  
Head Carpenter.....Melissa Hartman  
Prop Carpenter.....Ryan Howard  
Assistant Lighting Designer.....Hilda Kane

### CREDITS

Original Prop Master.....Michael O'Hara  
Original Casting.....Raul Clayton Staggs  
Original Dialect Coach.....Tuffet Schmelzle  
Original Assistant Director.....Shen Heckel  
Original Associate Producers.....Christopher Aguilar,  
Josh Gershick, Jonathan Munoz-Proulx, Shaina Rosenthal

Original costumes provided by Skylight Theatre Company. Additional costumes provided by the Center Theatre Group Costume Shop.

### SKYLIGHT THEATRE COMPANY STAFF

Board of Directors.....Fr. Gregory Goethals, SJ—Chair,  
Steven Karic—Vice Chair & Treasurer, Dale Raoul—  
Secretary, Ford Austin, Bradford Bancroft, Gary Grossman,  
Wendy Kout, William Slocum, Doris Roberts (In Memoriam)  
Advisory Committee.....Robert Israel, Chip Rosenbloom  
Executive Director.....Sandeel Grossman  
Producing Artistic Director.....Gary Grossman  
Co-Artistic Director.....Tony Abatemarco  
Artistic Associate.....Michael Kearns  
Play Lab Director.....Lee Blessing  
Program Coordinator and Technical Advisor.....Christopher Hoffman  
Lyric Project Program Director.....John J. Torres  
Artistic Leaders...Victoria Pearlman, Celia Ramirez, Shaina Rosenthal  
PlayLAB Associate Director.....Tim Furlong  
Publicist.....Judith Borne  
Graphic Design.....Llance Bower, Guillermo Perez  
Stage Managers.....Christopher Hoffman, Colin Grossman,  
Garrett Longley, Ben Baltman

Front of House.....Jill Abatemarco, Ashley Felkner,  
Amy Pelch, Carlee Wilson

Artistic Advisors.....Andy Ackerman, Brooke Adams,  
Randall Arney, Ed Asner, Dan Bucatinsky, Scott Ellis,  
Johnny Galecki, Peter Gallagher, Buck Henry,  
John Benjamin Hickey, Winnie Holzman, Sheryl Kaller,  
Stacy Keach, Sharon Lawrence, Eric McCormack,  
Mary McDonnell, Terrence McNally, Marcia Milgrom Dodge,  
Alfred Molina, Geoffrey Nauffts, Billy Porter, Joan Rater,  
Jeffrey Richman, Don Roos, Thomas Sadoski,  
Marc Shmuger, Joe Spano

film. TV credits include *The Walking Dead* (AMC), *Psych* (USA), *Eureka* (Syfy), *Human Target* (Fox), *The Cape* (NBC), *Caprica* (Syfy), and *Trauma* (NBC), and he has scored full series, specials, and promos for HBO, BBC, NBC, Discovery, National Geographic, and others. Theatre credits include The Kennedy Center, Arena Stage, Folger Theatre, Antaeus, Rogue Machine, Skylight Theatre, The Fountain Theatre, Odyssey Theatre Ensemble, and he served as assistant conductor on the national tour of *The Phantom of the Opera*.

**GARRETT CROUCH** (*Production Stage Manager*) is a multi-hyphenate human with a deep passion and love for entertainment. He graduated from AMDA College and Conservatory for the Arts in 2015. Actor, writer, musician, technician, director, and stage manager are just a few pies to name. He recently collaborated with the Puckwit Gang in a successful run of *Dangerous Cures of Dr. B*, which he co-wrote the script and score for. When he isn't writing the score to a show or acting out, you can usually find him in the booth, managing at Skylight Theatre in Los Feliz, where he was production stage manager of the multiple award-winning *Rotterdam*.

**MARCEDES L. CLANTON** (*Stage Manager*) is delighted to return to the Kirk Douglas Theatre. Selected credits: *Mutt House* (premiere), *Laughter on 23<sup>rd</sup> Floor, A Funny Thing Happened on the Way to the Forum, The Madwoman of Chaillot, Ah, Wildemess!, The Maids, Sons of the Prophet* (West Coast premiere), *Wolves* (L.A. premiere), *Justin Love* (premiere), *The Color Purple* (six Ovation Awards), Leslie Jordan's *Fruit Fly* (premiere), *What's Wrong with Angry?, Take Me Out* (NAACP Awards), *The Temperamentals* (West Coast premiere), and *[title of show]*. She's proud to be completing her ninth season as Resident Stage Manager with Celebration Theatre.

**SKYLIGHT THEATRE COMPANY** was created to support artists. Recognized as a “powerhouse of new play development” by *Dramatist Magazine*, the 36-year-old company discovers, develops, and produces compelling new works that expand mainstream theatre while nurturing and educating the people that create them. Plays premiering at Skylight have gone on to be performed Off-Broadway, nationally, and internationally, and its vibrant family of artists has received prestigious national and local awards. After producing over 100 World premieres and working with hundreds of teens and young adults, Skylight remains dedicated to the power of the artist to create positive change. SkylightTheatre.org

**HARTSHORN – HOOK PRODUCTIONS** is a live entertainment management company founded in 2007 by Louis Hartshorn and Brian Hook. Over 120 productions across five continents, including Olivier and multi-LADCC Award-winning *Rotterdam* (Arts, 59E59 New York, Skylight), Dreamworks' *Madagascar the Musical* (UK tour), *Urinetown* (Apollo), *American Idiot* (Arts

## WHO'S WHO



**NOEL ARTHUR** (*The Black Rat*) is excited to reprise this role here at the Kirk Douglas Theatre. He thanks his cast, Antaeus Theatre, director Andi Chapman, and adaptor Nambi E. Kelley. Other performance highlights include *TAR* (Playwrights' Arena), *Bars and Measures* (Boston Court), and *Elmina's Kitchen* (Lower Depth Theatre Ensemble). TV: *Jane the Virgin*, *Are You Sleeping*, *ER*, *Scrubs*, *NCIS*, *NCIS: Los Angeles*, *Shameless*. My love to my wife and son, Vanessa and Neo Orion. IG: @noelactor



**GIGI BERMINGHAM** (*Mrs. Dalton*) has appeared on many SoCal stages including Pasadena Playhouse, Old Globe, International City Theatre (ICT), La Mirada, Rubicon, Ensemble Theatre Company, MainStreet, and in many productions with classical theatre company Antaeus. TV: *Jane the Virgin*, *Adam Ruins Everything*, *Scandal*, *Agents of S.H.I.E.L.D.*, *Mistresses*, *Chasing Life*, *Hart of Dixie*, *Weeds*, *Days of Our Lives*. Film: *Save the Date*, *Alex & Emma*. Web: *Kittens in a Cage*, *The Britishes*. Awards: LA Stage Alliance Ovation Award for *Master Class* at ICT; Ovation and LADCC Awards for solo-comedy *Non-Vital Organs*. In December, Gigi performs *Cabaret Noel*. She is also a stage director and journalist.



**JON CHAFFIN** (*Bigger*) is a native of Stone Mountain, Georgia. He is making his Center Theatre Group debut with the revival of the critically acclaimed production *Native Son*. Theatre: *Two Trains Running* (Matrix Theatre), *American Saga—Gunshot Medley: Part 1* (Rogue Machine), *Native Son* (Antaeus Theatre), *King Hedley II* (Matrix Theatre), *The Dumb Waiter* (PushPush Theater). Television/film: *Lucifer*, *Snowfall*, *Hawaii Five-O*, *The Haves and Have Nots*, *Stitchers*, *Army Wives*, *Blindspotting*, *If Not Now*, *When?*, *96 Minutes*. Jon received his BA from Fort Valley State University. He is also a member of Phi Beta Sigma Fraternity, Inc.



**ELLIS GREER** (*Mary*) is honored to follow the lead of the artists at Antaeus and Center Theatre Group. At Antaeus Theatre Company: *Three Days in the Country*, *Native Son*, *Les Liaisons Dangereuses*. Other stages: *The Goodbye Girl*, *Jefferson's Garden* (L.A. Theatre Works); *The Matchmaker* (Actors Co-op); *The Many Women of Troy* (Pallas Theatre Collective); *The Diary of Anne Frank* (Oklahoma

Children's Theatre). Readings/workshops at Independent Shakespeare Co., The Pasadena Playhouse, and The Workroom's Off-the-Page series. Film: *Bastard*. Special awards/training: Best Actress for *St. Miranda* at the DC 48 Hour Film Project. BFA, USC. Her family has her heart.



**MATTHEW GRONDIN** (*Jan*) is honored to be at the Kirk Douglas Theatre with this inspiring group of artists! Recent credits: *District Merchants*, *Tales of a Fourth Grade Nothing*, and the NewSCRipts workshop of *Origin Story* (South Coast Repertory); *The City of Conversation*, *Women In Jeopardy!*, *Good People* (Ensemble Theatre Company); *A Moon for the Misbegotten* (Rubicon Theatre); *Stupid F\*cking Bird*, *Bad Jews* (Stage West); *Spinning Into Butter*, *Rabbit Hole* (Actors Co-op); *Friends Like These* (New York International Fringe Festival). He is a member of the Antaeus Theatre Company, and appeared in their productions of *The Cripple of Inishmaan* and *Native Son*. Readings/workshops include: Laguna Playhouse, Wallis Annenberg, and Pasadena Playhouse. TV: *Westworld*. For Dad.



**MILDRED MARIE LANGFORD** (*Bessie, Vera*) is excited to be back at it with Antaeus' powerful production of Nambi E. Kelley's adaptation of *Native Son* as part of Center Theatre Group's Block Party 2019! Other credits include: Rogue Machine Theatre and Collaborative Artists Bloc's co-production of Dionna Michelle Daniel's *American Saga—Gunshot Medley: Part 1*. Mildred can also now be seen in the new series *Commune* on YouTube at Commune the Series, which she co-executive produced and co-wrote with an uber-talented group of artists. @communetheseries



**NED MOCHEL** (*Britten*) is so pleased to be a part of this incredible cast. Ned appeared in Antaeus Theatre Company's production of *Hedda Gabler*. Ned also appeared in Sam Hunter's *A Permanent Image* at Rogue Machine. Ned hails from Chicago, where he worked for The Goodman Theatre, The Court Theatre, Lifeline Theatre, Remains, and many others. He wishes to thank his pack at home for all the love and support.



**VICTORIA PLATT** (*Hannah*). Center Theatre Group: *Venice* (Kirk Douglas Theatre, Ovation Award nom), *Pippin* (Mark Taper Forum), *Native Son* (Antaeus Theatre—2018), *Jelly's Last Jam* (Broadway), *Building the Wall* and Roxy in *Cyrano* (Fountain Theatre), *Sammy* (Old Globe), *Asphalt* (REDCAT), and *Atlanta* (Geffen). TV: *Dimensional Shift* (pilot, lead), *NCIS: New Orleans*, *NCIS: Los Angeles*, *Lucifer*, *Bones*, *The Mentalist*, *Castle*, *Criminal Minds*, and contract roles on both *All My Children* and *Guiding Light*. Film: *H4* (adaptation of *Henry IV*, which she co-produced with Harry Lennix & Terrell Tilford), Josephine Baker in HBO's *Winchell*, *#Truth* (dir. Charles Murray), *The Gleaner* (opp. Angus MacFadyen, dir. Harry Lennix), *Revival!*, *Interference*, *Jonah Hex*. VictoriaPlatt.com



**BRANDON RACHAL** (*Buddy*). Los Angeles theatre: *Fences* (Long Beach Playhouse), *Love's Labour's Lost*, *Twelfth Night* (Downtown Repertory Theater Company), *Othello* (Inner City Shakespeare). Regional: *Romeo and Juliet* (Texas Shakespeare Festival). Film: *Iago*. Web: *Jesus Freaks*. Training: BA theatre, USC. IG: @brandonrachal\_

**NAMBI E. KELLEY** (*Playwright*). Award-winning playwright and actress, Nambi has performed on stages across the world and on television. She is currently serving in residence at New Victory Theater and as a Dramatists Guild Foundation Fellow. She has penned plays for Steppenwolf, Goodman Theatre, Lincoln Center (Director's Fest), and internationally. Former playwright in residence at the National Black Theatre and Goodman Theatre. Awards include: The Prince Prize, Writers Alliance Grant (Dramatists Guild Foundation), the Francesca Primus Prize (finalist), and The Kevin Spacey Foundation Award (finalist). Currently working on an adaptation of Toni Morrison's *Jazz*. *Native Son* will premiere in NYC in July 2019. Nambi is working on several commissions, including television and film projects. nambikelley.com

**ANDI CHAPMAN** (*Director*). Associate Artistic Director of Ebony Repertory Theatre. Her directing credits include Ebony Repertory Theatre's *The Gospel at Colonus*, which garnered 14 Ovation nominations, including Best Play and Best Play Direction, and won the NAACP Theatre Award for Best Production (2016). Others include *Mockingbird*, *As It Is In Heaven*, *The Ninth Wave*, Actors Co-op *Steel Magnolias* (for which she garnered a Best Director award), and a host of others. Assistant director for *Joe Turner's Come and Gone* (Mark Taper Forum). Film: the award-winning short films *Memorial Street*, *Elijah's Song*, and *Why? A graduate of Yale School of Drama. An alumna of The American Film Institute's*

Directing Workshop for Women. Andi is honored to be forever Hallon Chapman's daughter.

**EDWARD E. HAYNES JR.** (*Scenic Designer*) is excited to be returning to Center Theatre Group where he served as Resident Scenic Designer for 18 years. Regional credits include Mark Taper Forum, Ebony Repertory Theatre Company, South Coast Rep, Kirk Douglas Theatre, Geffen Playhouse, Berkeley Rep, East West Players, Pasadena Playhouse, Hollywood Bowl, Marin Theatre Co., TheatreWorks, Muni Opera, Intiman Theatre, Trinity Rep, Alley Theatre, Alliance Theatre, and many he can no longer remember. Television credits include MTV's *Spring Break 2012 & 2011*, *Hip Hop Harry*, *The Tony Rock Project*, and *Culture Clash*. Ed is the father of twins, Denis and Wesley, and husband to director Elizabeth Bell-Haynes.

**WENDELL C. CARMICHAEL** (*Costume Designer*). Theatre credits: *The Mountaintop*, *Our Town*, *The Wizard of Oz*, *WINK*, *Fool for Love*, *In the Heights*, *Happy Ending*, *American Saga—Gunshot Medley*, *Jews, Christians and Screwing Stalin, Vol. 1: A Post Racial America*, *Violet*, *Her Portmanteau*, *Native Son*, *A Walk in the Woods*, *Cabaret*, *West Side Story*, *Romeo and Juliet*, *Othello*, *Desdemona: A Play about a Handkerchief*, *The Crucible*, *An Octoroon*, *Br'er Cotton*, *Ball Yards*, *Waiting for the Parade*, *The Good War*. 2018 Stage Raw winner—Costume Design, three-time LA Ovation Award nominee, 2017 Orange County's Best Costume Designs, 2015 NAACP Theatre Award winner. Member of Local 768, the Theatrical Wardrobe Union/ LA Opera.

**ANDREW SCHMEDAKE** (*Lighting Designer*) is a Los Angeles-based lighting designer for theatre, dance, and live events. Recent credits include designs for Gabriel Iglesias, *Steel Magnolias*, *The Man Who Came to Dinner*, *The 39 Steps*, *33 Variations* (Actors Co-op—2017 Ovation Award for Lighting Design), *One Flew Over the Cuckoo's Nest* (2018 Ovation Award for Lighting Design), *Dogfight* (After Hours Theatre Company), *Native Son* (Antaeus Theatre Company—2018 Ovation nominee), and *The Art Couple* (Sacred Fools). Andrew holds an MFA from the School of Drama at Carnegie Mellon University and teaches as a guest lecturer in lighting design at UC Santa Barbara. schmedakelightingdesign.com

**JEFF GARDNER** (*Sound Designer*) is thrilled to be back at Block Party after previously designing *Dry Land* with Echo Theater Company. Jeff's designs include *Cry It Out*, also with Echo Theater Company; *Picnic* for Antaeus Theatre Company; *The Cake* for the Geffen Playhouse; *Rosencrantz & Guildenstern Are Dead* for A Noise Within; *Trevor* for Circle X Theatre Company; *Les Blancs* for Rogue Machine Theatre; *The Recommendation* for IAMA Theatre; *Two Trains Running* at the Matrix Theatre; and *It's a Wonderful Life* for The Pasadena Playhouse. Jeff can also be seen performing live sound effects

for L.A. Theatre Works and is resident sound designer for the Westridge School in Pasadena. jeffthomasgardner.net

**ADAM R. MACIAS** (*Projection Designer*) is very excited to be working with Center Theatre Group to bring the *Native Son* group back together again! He is an Ovation-nominated video designer and sound designer. Some of his recent credits include *Rope* (sound designer and composer—Actors Co-Op Theatre), *Charlie and The Chocolate Factory* (sound designer, composer, and video designer—Arcadia Performing Arts Center), *Native Son* (video designer—Antaeus Theatre Company), *A Walk In The Woods* (sound designer & composer—Actors Co-Op Theatre), and much more! Go to adamrmacias.com to see and listen to his designs and music!

**TAYLOR ANNE CULLEN** (*Production Stage Manager*) is thrilled to make her debut at the Kirk Douglas Theatre with the incredible team of *Native Son*! Other PSM credits include: *How We're Different From Animals* (Élan Ensemble), *The Little Foxes* (Antaeus Theatre Company), *Alcina* (USC Thornton School of Music), *A Weekend with Pablo Picasso* (Casa O101 Theatre), *The Kentucky Cycle*, *Mockingbird*, *Love and Information*, *That Long Damn Dark* (USC School of Dramatic Arts). Stage management internship credits include: *Tosca* (LA Opera), *Bull*, *Dutch Masters* (Rogue Machine Theatre), and *Annapurna* (The New Group). Taylor is a graduate of the University of Southern California's School of Dramatic Arts, BFA in stage management.

**MAGGIE SWING** (*Stage Manager*). Center Theatre Group: *Linda Vista*, *Quack*, Block Party 2018, *Elliot*, *A Soldier's Fugue*, *Spamilton*, *Big Night*, *King of the Yeas*, Block Party 2017, *Vicuña*, *Throw Me on the Burnpile and Light Me Up*. Geffen Playhouse: *Big Sky*, *Barcelona*, *Guards at the Taj*, *Discord*, *The Country House*, *American Buffalo*. Boston Court: *Collective Rage*. European tour: *The Apple Family Plays*. Off-Broadway: *Regular Singing*, *Sorry*, *Love's Labour's Lost*, *Sweet and Sad*, *Knickerbocker*, *Compulsion*, *That Hopey Changey Thing* (The Public Theater), *Slowgirl* (Lincoln Center), *Blood Knot*, *The Orphans' Home Cycle* (Signature Theatre Company).

**ANTAEUS THEATRE COMPANY** is an actor-driven theatre company that explores and produces timely and timeless works, grounded in our passion for the classics. We illuminate diverse human experiences through performance, training, and outreach. We believe in the transformative power of live theatre. Antaeus was founded in 1991 by Dakin Matthews and Lillian Groag, who felt strongly that Los Angeles actors could form an ensemble theatre company equal to any other in the world. Antaeus.org

#### ADDITIONAL STAFF FOR *NATIVE SON*

Assistant Director.....Jessica E. Williams  
Choreographer.....Indira Tyler  
Fight Choreographer.....Bo Foxworth  
Head Carpenter.....Bo Foxworth  
Assistant Lighting Designer.....Meghan Hong  
Video Engineer.....Joey Guthman

#### CREDITS

Original Props Designer.....Jacquelyn Gutierrez  
Original Dramaturg.....Dylan Southard  
Original Arrangements by.....Dr. Joi Carr  
and Mr. Addison Doby

*Native Son* is presented by special arrangement with SAMUEL FRENCH, INC.

Original costumes provided by Antaeus Theatre Company.  
Additional costumes provided by the Center Theatre Group  
Costume Shop.

#### ANTAEUS THEATRE COMPANY STAFF

Board of Directors.....David Gindler, Chair,  
Rhonda Aldrich, Jamie Anderson, Sonja Berggren,  
Stuart Berton, Charlie Bohlen, Bill Brochtrup, Bob Craft,  
Evie DiCiaccio, Dawn Didawick, Ruth Eliel,  
Karen Frederiksen, Harry Groener, Mary Lambert,  
Melinda Eades LeMoine, Kwana Martinez,  
Claudette Nevins, Ana Rose O'Halloran,  
Ara Oshagan, Linda Park, Laura Seigle,  
Kitty Swink, Reba Thomas, Debra Thompson,  
Jocelyn Towne, Peter Van Norden, Arlene Vidor,  
Jack Walker, April Webster

Executive Director.....Ana Rose O'Halloran  
Co-Artistic Directors.....Bill Brochtrup, Kitty Swink  
Production Manager/Technical Director.....Adam Meyer  
Executive Assistant.....Lamar Richardson  
Assistant Technical Director.....Cuyler Perry  
Bookkeeper.....Amy Michner  
Publicist.....Lucy Pollak  
Founding Artistic Directors.....Dakin Matthews, Lillian Groag

#### CENTER THEATRE GROUP

**MICHAEL RITCHIE** (*Artistic Director*) is in his 14<sup>th</sup> season as Center Theatre Group's Artistic Director, and has led over 200 productions to the Ahmanson Theatre, Mark Taper Forum, and Kirk Douglas Theatre stages, including the premieres of six musicals that moved to Broadway—*The Drowsy Chaperone*, *Curtains*, *13, 9 to 5: The Musical*, *Bloody Bloody Andrew Jackson*, and *Leap of Faith*—and the Pulitzer Prize in Drama finalist *Bengal Tiger at the Baghdad Zoo*.

**DOUGLAS C. BAKER** (*Producing Director*) is now in his 29<sup>th</sup> season at Center Theatre Group. He is an active member of the Broadway League, the Independent Presenters

Network, and is a proud member of the Association of Theatrical Press Agents and Managers. In May 2013, Doug received the Broadway League's prestigious Outstanding Achievement in Presenter Management Award.

**LINDSAY ALLBAUGH** (*Associate Producer*) is a member of Center Theatre Group's artistic staff and has served in varying capacities for the past 14 years. Selected producing credits include—Mark Taper Forum: *Archduke*, *Bent*, *What the Butler Saw*, *Steward of Christendom*, *Waiting for Godot*; Kirk Douglas Theatre: *Block Party*, *Big Night*, *Good Grief*, *Vicuña*, *Throw Me On the Burnpile and Light Me Up*, *Endgame*, *Women Laughing Alone With Salad*, *Chavez Ravine*, *Race*, *different words for the same thing*, *The Nether*. Co-Artistic Director of the Elephant Theatre 2004–2014.

**NAUSICA STERGIU** (*General Manager*) has worked professionally supporting artists in theatres of all shapes, sizes, and locales including many seasons at Center Theatre Group as General Manager and, previously, as Audience Development Director. She oversees mainstage productions at the Taper and Douglas, as well as new play commissions and developmental productions through Center Theatre Group's New Play Development. Nausica has taught at USC's School of Dramatic Arts, and advises and works with local nonprofits including Hollywood Orchard.

**GORDON DAVIDSON** (*Founding Artistic Director*) led the Taper throughout its first 38 seasons, guiding over 300 productions to its stage and winning countless awards for himself and the theatre—including the Tony Award for theatrical excellence, Margo Jones Award, The Governor's Award for the Arts, and a Guggenheim fellowship. *The Kentucky Cycle* and *Angels in America (Part One)* won the Pulitzer in consecutive years and, in 1994, three of the four plays nominated for the Tony Award for Best Play were from the Taper (*Angels in America* won). In 1989, Gordon took over the Ahmanson and, in 2004, he produced the inaugural season in the Kirk Douglas Theatre.

#### BLOCK PARTY CORE TEAM

Line Producer, Special Artistic Projects.....Patricia Garza  
Production Manager.....Chris Reardon  
Associate General Manager.....Katie Soff  
Program Coordinator.....Ian-Julian Williams

#### ADDITIONAL STAFF FOR BLOCK PARTY

Block Party General Management.....Megan Alvord,  
Casey McDermott, Eric Sims  
Production Coordinator.....Brooke Baldwin  
Carpenters.....Michelle Black, Ryan Fischer, Bo Foxworth,  
Connor Hayes, Curt Gavin, Melissa Hartman,  
Ryan Howard, Joe Kidawski, Randy Pound

Scenic Artists.....Orlando de la Paz, Jacquelyn Gutierrez  
Prop Master.....Kate Reinlib  
Prop Artisans.....Eric Babb, Erin Walley  
Electricians.....Kristen Addix, Brooke Baldwin, Jenisse Castillo,  
Daniel del Busto, Corwin Evans, Chase Hinton,  
Lunchbox, Eric Mitchell, Kari Morales, Taylor Shaw

#### CREDITS

Props provided by the Center Theatre Group Prop Department.  
Production photos by Craig Schwartz.

#### FRONT-OF-HOUSE LEADS

Trevor Algatt, AJ Meijer, Tarah Pollock

#### FRONT-OF-HOUSE LEAD SWINGS

Chase Anderson-Shaw, Bradford Barnes, Olivia Choate, Eduardo Fernandez-Baumann, Stephen Lydic, Adrienne Marquand

#### DISCUSSION LEADERS

Chase Anderson-Shaw, Megan DeHart, Amber Espinosa-Jones, Eduardo Fernandez-Baumann, Stephen Lydic, Adrienne Marquand, Isabella Petri

#### CONCIERGES

Payden Ackerman, Hanna Anderson, Nicole Braucher, Lily Brown, Fallon Christian, Brandon Cutts, Eric Eberle, Abbey Fenbert, Jill Galbraith, Angela Garcia, Tara Griffo, Faith Imafidon, Henry Kelly, Joan Kubicek, Sarah Lindsley, Michael McClain, Rachael McNamara, Sean McSweeney, Janice Motuapuaka, Nicole Naito, Brenda Phillips, Antonie Pope, Daniel Rashid, Michayla Van Treeck

#### CONCESSIONS

Brandon Cutts, Megan DeHart, Abilene Gonzalez, Monica Greene, Mike Lanahan

#### STAGE DOOR ATTENDANTS

Trevor Algatt, Chase Anderson-Shaw, Cory Aycock, Abilene Gonzalez, Ian Ray

**ONLINE**  
Center Theatre Group #CTGLABlockParty  
Like us on Facebook Center Theatre Group

Follow us on Twitter @CTGLA  
Subscribe on YouTube CTGLA  
Follow us on Instagram @CTGLA



The Actors and Stage Managers employed in this production are members of Actors' Equity Association, the Union of Professional Actors and Stage Managers of the United States. This theatre operates under an agreement between the League of Resident Theatres and Actors' Equity Association, the Union of Professional Actors and Stage Managers in the United States.



The Directors are members of the Stage Directors and Choreographers Society, Inc., an independent national labor union.



Center Theatre Group is a member of the League of Resident Theatres (LORT), the American Arts Alliance, the Broadway League, Independent Producers' Network (IPN), LA Stage Alliance, National Alliance for Musical Theatre (NAMT) and the Theatre Communications Group (TCG).





**MICHAEL RITCHIE** Artistic Director  
**DOUGLAS C. BAKER** Producing Director

**ARTISTIC**

NEEL KELLER ..... Associate Artistic Director  
 KELLEY KIRKPATRICK ..... Associate Artistic Director  
 DIANE RODRIGUEZ ..... Associate Artistic Director  
 LINDSAY ALLBAUGH ..... Associate Producer  
 PATRICIA GARZA ..... Line Producer, Special Artistic Projects  
 SUZANNE HEE MAYBERRY ..... Casting Coordinator  
 IAN-JULIAN WILLIAMS ..... Program Coordinator, Block Party  
 TIFFANY SLAGLE ..... Literary Assistant  
 MATTHEW BOURNE, DANAI GURIRA,  
 ANNA D. SHAPIRO ..... Associate Artists

DAVID ADJMI (FADIMAN), LUIS ALFARO, JON ROBIN BAITZ,  
 STEVE CIUFFO, LISA D'AMOUR, WILL ENO (FADIMAN),  
 JENNIFER HALEY, ALESHEA HARRIS, LARS JAN, NANCY KEYSTONE, LISA  
 KROM, KIMBER LEE, YOUNG JEAN LEE, MATTHEW LOPEZ, TREV LYFORD,  
 RICHARD MONTOYA, JANINE NABERS (FADIMAN), QUI NGUYEN, LYNN  
 NOTTAGE, MARCO RAMIREZ, SARAH RUHL, ROGER GUYENVEUR SMITH, GEOFF  
 SOBELLE, MARIKE SPLINT, LUIS VALDEZ, PAULA VOGEL, TRACEY SCOTT  
 WILSON (FADIMAN),  
 KAREN ZACARIAS (FADIMAN) ..... Commissioned Artists

LUIS ALFARO, AZIZA BARNES, DIANA BURBANO,  
 NOAH HAIDLE, ADITI BRENNAN KAPIL, BRIAN OTOÑO,  
 RUBY RAE SPIEGEL ..... L.A. Writers' Workshop Members

KRISTINA WONG ..... Sherwood Award Recipient, 2019

**EDUCATION, ENGAGEMENT, AND COMMUNITY PARTNERSHIPS**

LESLIE K. JOHNSON ..... Director of Social Strategy, Innovation and Impact  
 KATHRYN MACKENZIE ..... Director of Administration  
 TYRONE DAVIS ..... Audience Engagement Director  
 TRACI KWON ..... Arts Education Initiatives Director  
 JESUS REYES ..... Community Partnerships Director  
 CAMILLE SCHENKKAN ..... Next Generation Initiatives Director  
 JAQUELYN JOHNSON ..... Audience Engagement Manager  
 SONDRÁ MAYER ..... Concessions Manager (Kirk Douglas Theatre)  
 ADAM NICOLAI ..... Arts Education Program Manager  
 FELIPE M. SANCHEZ ..... Emerging Artists and  
 Arts Professionals Program Manager  
 ANNE MARIE ACOSTA ..... Administrative Assistant  
 DEBRA PIVER ..... Resident Teaching Artist  
 ALEKSEJ AARSAETHER ..... Temporary Internship Program Coordinator  
 MICHAELA BULKLEY ..... Temporary Career Fair Program Coordinator  
 COURTNEY CLARK ..... Temporary Program Assistant

**MANAGEMENT AND ADMINISTRATION**

NAUSICA STERGIU ..... General Manager  
 JEFFREY UPAH ..... General Manager  
 KATIE SOFF ..... Associate General Manager  
 ERIC SIMS ..... Associate General Manager  
 CASEY McDERMOTT ..... Associate General Manager  
 MEGAN ALVORD ..... Company Manager  
 ALANA BEIDELMAN ..... Executive Assistant to the Artistic Director

**PRODUCTION**

JOE HAMLIN ..... Director of Production  
 KRISTIN MATSUMOTO ..... Production Manager  
 CHRISTOPHER REARDON ..... Production Manager  
 KATIE CHEN ..... Assistant Production Manager  
 ERIN TIFFANY ..... Assistant Production Manager  
 ERICA LARSON ..... Production Coordinator  
 SHAWN ANDERSON ..... Head Carpenter (Ahmanson Theatre)  
 SCOTT LUCAS ..... Head Properties (Ahmanson Theatre)  
 JAMES WRIGHT ..... Head Electrician (Ahmanson Theatre)  
 ROBERT SMITH ..... Head Sound (Ahmanson Theatre)  
 SHANE ANDERSON ..... Head Flyrail (Ahmanson Theatre)  
 GARY MARTHALER ..... Wardrobe Supervisor (Ahmanson Theatre)  
 MARY WARDE ..... Hair and Make-up Supervisor  
 (Ahmanson Theatre)  
 CHRISTINE L. COX ..... House Manager (Ahmanson Theatre)  
 EMMET KAISER ..... Head Carpenter (Mark Taper Forum)  
 MARY ROMERO ..... Head Properties (Mark Taper Forum)  
 AARON STAUBACH ..... Head Electrician (Mark Taper Forum)  
 BONES MALONE ..... Head Sound (Mark Taper Forum)  
 DENNIS SEETOO ..... Wardrobe Supervisor (Mark Taper Forum)  
 RICK GEYER ..... Hair & Make-up Supervisor (Mark Taper Forum)  
 LINDA WALKER ..... House Manager (Mark Taper Forum)  
 ADAM PHALEN ..... Head Audio (Kirk Douglas Theatre)

SEAN MEYER ..... Head Electrician (Kirk Douglas Theatre)  
 CAMBRIA CHICHI ..... Wardrobe Supervisor (Kirk Douglas Theatre)  
 BEN GRAY ..... Stage Supervisor (Kirk Douglas Theatre)  
 CHAD SMITH ..... Associate Technical Director  
 LEE O'REILLY ..... Associate Technical Director  
 SEAN KLOC ..... Shop Foreman  
 MERRIANNE NEDREBERG ..... Prop Director  
 KATE REINLIB ..... Associate Prop Manager  
 CANDICE CAIN ..... Costume Director  
 BRENT M. BRUIN ..... Costume Shop Manager  
 MADDIE KELLER ..... Costume Generalist  
 WHITNEY OPPENHEIMER ..... Resident Assistant Costume Designer  
 KAT PATTERSON ..... Resident Assistant Costume Designer  
 SWANTJE TUOHINO ..... Tailor

**OPERATIONS**

DAWN HOLSIKI ..... Director of Operations and Facilities  
 PETER WYLIE ..... Office Services Manager  
 ELIZABETH LEONARD ..... Senior Facilities Manager  
 MAX OKEN ..... Facilities Manager  
 BRANDON DOBBINS ..... Operations and Production Supervisor  
 JULIO A. CUELLAR ..... Driver/Custodian  
 BO FOXWORTH, JOE HALLAM ..... Drivers

**FINANCE, INFORMATION SYSTEMS, AND HUMAN RESOURCES**

CHERYL SHEPHERD ..... Chief Financial Officer  
 SARAH STURDIVANT ..... Director of Finance and Technology  
 SUZANNE BROWN ..... Controller  
 DANNY LAMPSON OPSTAD ..... Accounting Manager  
 NAKISA ASCHTIANI ..... Senior Staff Accountant  
 ALEGRIA SENA ..... Staff Accountant  
 XOCHITL RAMIREZ ..... Accounts Payable Supervisor  
 KERRY LARICK ..... Accounting Assistant  
 JESSICA HERNANDEZ ..... Payroll Manager  
 JUAN MARTINEZ ..... Payroll Specialist

TOM MEGALE ..... Director of Business Applications  
 ASH LEWIS ..... Systems Administrator  
 JANELLE TORRES ..... Senior Tessitura & Web Administrator  
 CHIMA OMEAKU ..... Help Desk Support

JODY HORWITZ ..... Director of Human Resources  
 PI. PHILLIPS ..... Senior Human Resources Generalist  
 MELISSA MCCAFFREY ..... Human Resources Generalist  
 MOSS ADAMS ..... Auditor  
 MICHAEL C. DONALDSON, LISA A. CALLIF ..... Legal Counsel  
 GIBSON, DUNN & CRUTCHER ..... Legal Counsel

**INSTITUTIONAL ADVANCEMENT**

YVONNE CARLSON BELL ..... Director of Institutional Advancement  
 TYLER ENNIS ..... Deputy Director of Institutional Advancement  
 JASON CABRAL ..... Director of Advancement Operations & Analytics  
 LOUIE ANCHONDO ..... Director of Events & Corporate Relations  
 ASHLEY TIERNEY ..... Director of the Annual Fund  
 TERRA GOULDEN ..... Senior Major Gifts Officer  
 KATY HILTON ..... Associate Director of Foundation & Government Support  
 LAURA HITE ..... Associate Director of Gift Operations & Reporting  
 MANDI OR ..... Associate Director of Special Events  
 RYAN WAGNER ..... Associate Director of Donor Data &  
 Communication Strategy  
 VANESSA WHEELER ..... Associate Director of Prospect Research  
 MOLLY COTTEN ..... Major Gifts Officer  
 CHRISTY LAMB ..... Corporate Relations Officer  
 DENEEN O'NEILL ..... Board Liaison and Administrator  
 KIM OKAMURA ..... Grants Manager  
 SARAH RIDDLE ..... Annual Fund Manager  
 ERIN SCHLABACH ..... Donor Stewardship & Recognition Strategist  
 ELIZABETH DELLORUSSO ..... Annual Fund Officer  
 DONALD JOLLY ..... Advancement Communications Specialist  
 EDUARDO MOLLINEDO-PINÓN ..... Advancement Database Analyst  
 MIKE RATTERMAN ..... Donor Advisor Supervisor  
 ERIC SEPPALA ..... Executive Assistant to the Director  
 of Institutional Advancement  
 MATTHEW SUTPHIN ..... Special Events Coordinator  
 OLIVIA BERUMEN ..... Advancement Operations Associate  
 SOHINI RISAM ..... Institutional Advancement Assistant  
 AL BERMAN, VARTAN MERJANIAN, BENJAMIN SCHWARTZ,  
 NICOLE SCIPIONE, PAUL VITAGLIANO ..... Donor Advisors

KARLA GALVEZ, JUSTINE PEREZ ..... Donor Services Associates  
 MURRAY E. HELTZER, EARL KLASKY ..... Development Volunteers

**MARKETING**

DEBORAH WARREN ..... Director of Marketing  
 GARRETT COLLINS ..... Marketing Strategy Director  
 KYLE HALL ..... Creative Director  
 ARIE LEVINE ..... Senior Marketing Manager, Ahmanson &  
 Mark Taper Forum  
 KIYOMI EMI ..... Marketing Manager, Promotions & Events  
 EMYLI GUDMUNDSON ..... Marketing Manager, Kirk Douglas Theatre  
 CAROLINE THOMPSON/IMPACT 123 ..... Media Planning

DEANNA McCLURE ..... Art and Design Director  
 IRENE T. KANESHIRO ..... Senior Design Manager  
 SANDI SILBERT ..... Senior Designer  
 TARA NITZ ..... Senior Designer  
 JAVIER VASQUEZ ..... Senior Designer-Digital Specialist

**COMMUNICATIONS**

JAMES SIMS ..... Director of Communications  
 JASON MARTIN ..... Head of Publicity  
 KRISTI AVILA ..... Publicist  
 KAREN BACELLAR ..... Junior Publicist  
 SARAH ROTHBARD ..... Associate Editorial Director  
 TYLER EMERSON ..... Digital Product Manager  
 RUTH GUERRA ..... Communications Coordinator  
 REZA VOJDANI ..... Communications Coordinator  
 HAL BANFIELD ..... Multimedia Producer

**TICKET SALES AND SERVICES**

SHAWN ROBERTSON ..... Ticket Sales Director  
 SKYPP CABANAS ..... Senior Manager, Ticket Operations  
 NICOLE MEDINA ..... Ticket Operations Coordinator  
 MICHAEL ZOLDESSY ..... Senior Manager, Account Sales  
 SANDY CZUBIAK ..... Audience and Subscriber  
 Services Director

JENNIFER BAKER, CHERYL HAWKER,  
 RICHARD RAGSDALE ..... Audience Services Supervisors  
 ALICE CHEN ..... Audience Services Asst. Supervisor  
 MICHAEL ESPINOZA, GARY HOLLAND ..... Audience Services Sales Associates  
 SAM AARON, JESSICA ABROMAVICH, JEREMIE ARENCIBIA,  
 KIMBERLY ARENCIBIA, VICKI BERNDT,  
 DAVID BETANCOURT, ALEJANDRA DE PAZ,  
 KAITLYN GALVEZ, ANASTASHIA GARCIA,  
 ELIANA HERNANDEZ-FAUSTO, CHRISTINE PEDROZA,  
 EILEEN PEREZ, CHRISTIAN UNGER ..... Audience Services Representatives  
 DANUTA SIEMAK ..... Subscriber Services Supervisor  
 CHRISTINA GUTIERREZ ..... Subscriber Services Asst. Supervisor  
 IRENE CHUANG, LIGIA PISTE, PETER STALOCH ..... Subscriber Services  
 Senior Representatives

SARAH K. GONTA ..... Box Office Treasurer  
 ANGELICA CARBAJAL, KISHISA ROSS ..... Assistant Treasurers  
 KEANA JACKSON, MICHAEL KEMPISTY, KEVIN LAUVER,  
 CRIS SPACCA, MICHAEL VALLE ..... Box Office Staff  
 KERRY KORF ..... Priority Services Director  
 CANDICE WALTERS ..... Priority Services Sales Manager  
 PAUL CUEN, KRISTEN SCHRASS ..... Priority Services Managers  
 SOFIJA DUTCHER ..... Priority Services Assistant Supervisor

BEAELNE AHERN, REILLY ALLEN, CLAY BUNKER,  
 RITA CANNON, MAGGIE DODD, NATALIE DRESSEL,  
 MARC "BYRON" DROTMAN, FRANK ENSENBENGER,  
 LOU GEORGE, BRAD GRIFFITH, CONSTANCE HARCAR,  
 SHEP KOSTER, JULIANNA OJEDA, IAN PRICE,  
 MICHAEL SMITH, BRITTANY VILLARS,  
 DIANE WARD ..... Priority Services Representatives  
 SABRINA CAMPOS, GENESIS CHICAS, PAUL DAVIS,  
 NICOLE ESPINOZA, ZAIRA HERNANDEZ, LINDSAY A. JENKINS,  
 ERICA KIM, CESIA REYES, GRACELYN SWEENEY ..... Interns