

# Mark Taper Forum

45th Season 2012

FIRST SEASON PRODUCTION

## Clybourne Park

By Bruce Norris  
Directed by Pam MacKinnon  
January 11 – February 26, 2012

SECOND SEASON PRODUCTION

## Waiting for Godot

By Samuel Beckett  
Directed by Michael Arabian  
March 14 – April 22, 2012

THIRD SEASON PRODUCTION

## Los Otros

Book and lyrics by Ellen Fitzhugh  
Music by Michael John LaChiusa  
Directed by Graciela Daniele  
May 23 – July 1, 2012

FOURTH SEASON PRODUCTION

## Red

By John Logan  
Directed by Michael Grandage  
August 1 – September 9, 2012

FIFTH SEASON PRODUCTION

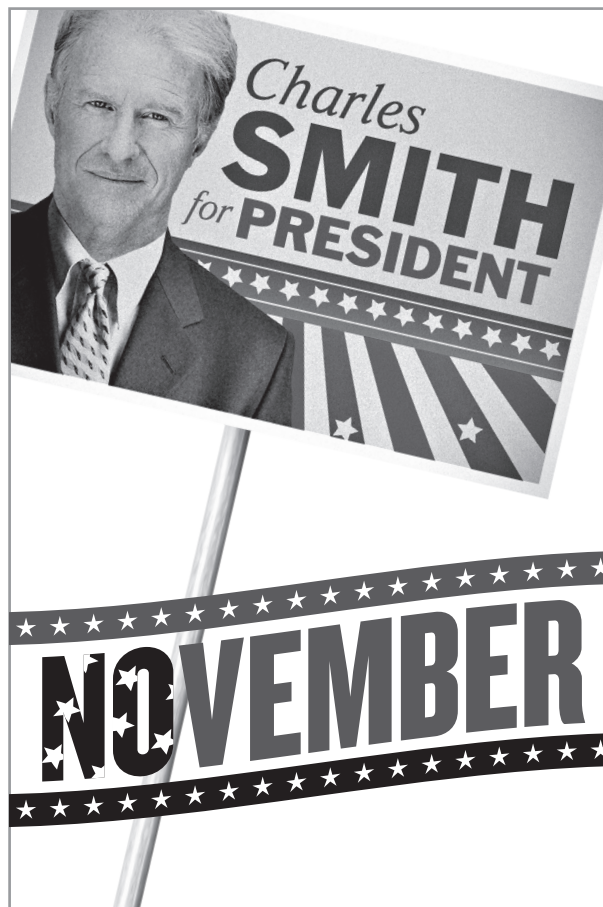
## November

By David Mamet  
Directed by Scott Zigler  
September 26 – November 4, 2012

SIXTH SEASON PRODUCTION

## Other Desert Cities

By Jon Robin Baitz  
Directed by Robert Egan  
November 28, 2012 – January 6, 2013



 Center  
Theatre  
Group  
L.A.'s Theatre Company

**CENTER THEATRE GROUP BOARD OF DIRECTORS  
2012/2013 OFFICERS**

**HONORARY CHAIRMAN**  
Lew R. Wasserman†

**CHAIRMAN**  
Martin Massman

**PRESIDENT**  
William H. Ahmanson

**VICE PRESIDENT**  
Ava Fries

**SECRETARY**  
Amy R. Forbes

**ASSISTANT SECRETARY**  
Susan Grode

**TREASURER**  
Dr. Steven Nagelberg

**BOARD MEMBERS**  
Dean V. Ambrose  
Pamela Beck  
Norris J. Bishton, Jr.  
Dannielle Campos Ramirez  
Joseph C. Carieri  
Marcy Carsey  
Cástulo de la Rocha  
Vin Di Bona  
Dante Di Loreto  
Frances Flanagan  
Barbara Fodor  
Eric R. Garen  
Kiki Ramos Gindler  
Patricia Glaser  
Brindell Roberts Gottlieb  
Timothy G. Hanlon  
Brian Hargrove  
Stephen F. Hinchliffe, Jr.  
Darell L. Krasnoff  
Lucy M. Labruzzo  
Jennifer Altfeld Landau  
Carol Mancino  
Antonio Manning  
Dale S. Miller  
Walter Mirisch  
Jo Muse  
Edward B. Nahmias  
Diane Neubauer  
Edward L. Rada  
Bill Resnick  
Michael Ritchie  
Laura Rosenwald  
Bruce L. Ross  
Eva Stern  
Louise Taper  
Sue Tsao

**EMERITUS**  
Harold Applebaum  
Ronald J. Arnault  
Judith Beckmen  
Gordon Davidson  
Phyllis Hennigan  
Leonard Hirshan  
Richard Kagan  
Nancy Olson Livingston  
O. Kit Lokey  
Diane Morton  
Lawrence J. Ramer

**PAST PRESIDENTS**  
Lew R. Wasserman†  
Marshall Berges†  
Armand S. Deutsch†  
Walter Mirisch  
Henry C. Rogers†  
Richard E. Sherwood†  
J. David Haft†  
Lawrence J. Ramer  
Stephen F. Hinchliffe, Jr.  
Phyllis Hennigan  
Richard Kagan  
Martin Massman

†Deceased



Rehearsals for *November*: 1. L TO R: Ed Begley, Jr., Todd Weeks, Felicity Huffman and CTG Artistic Director Michael Ritchie. 2. Ed Begley, Jr. 3. L TO R: Director Scott Zigler and Rod McLachlan. 4. Felicity Huffman and Ed Begley, Jr.  
PHOTOS BY CRAIG SCHWARTZ



**Center Theatre Group**

L.A.'s Theatre Company

Ahmanson Theatre

Mark Taper Forum

Kirk Douglas Theatre

**Michael Ritchie**, ARTISTIC DIRECTOR **Edward L. Rada**, MANAGING DIRECTOR

**Gordon Davidson**, FOUNDING ARTISTIC DIRECTOR

# NOVEMBER

BY

**David Mamet**

WITH

**Ed Begley, Jr.**

**Gregory Cruz**

**Felicity Huffman**

**Rod McLachlan**

**Todd Weeks**

SCENIC DESIGN

**Takeshi Kata**

COSTUME DESIGN

**Laura Bauer**

LIGHTING DESIGN

**Josh Epstein**

ASSOCIATE ARTISTIC DIRECTOR

**Neel Keller**

CASTING

**Erika Sellin, CSA**

PRODUCTION STAGE MANAGER

**Barclay Stiff**

DIRECTED BY

**Scott Zigler**

September 26–November 4, 2012

Mark Taper Forum

*November* was first presented by Jeffrey Richards, Jerry Frankel, Jam Theatricals, Bat-Barry Productions, Michael Cohl, Ergo Entertainment, Michael Filerman, Ronald Frankel, Barbara and Buddy Freitag, James Fuld Jr., Roy Furman, JK Productions, Harold Thau, Jamie deRoy/Ted Snowdon, Wendy Federman at the Ethel Barrymore Theatre, Broadway, opening January 17, 2008, with the following cast: *Charles Smith* - Nathan Lane; *Archer Brown* - Dylan Baker; *Clarice Bernstein* - Laurie Metcalf; *A Representative of the National Association of Turkey and Turkey By-Products Manufacturers* - Ethan Phillips; *Dwight Grackle* - Michael Nichols. Directed by Joe Mantello; set by Scott Pask; costumes by Laura Bauer; lighting by Paul Gallo.

*November* is presented by special arrangement with Samuel French, Inc.

**CAST**

(in order of appearance)

Charles Smith ..... ED BEGLEY, JR.  
 Archer Brown ..... ROD MCLACHLAN  
 A Representative of the National Association of Turkey and Turkey By-Products Manufacturers ..... TODD WEEKS  
 Clarice Bernstein ..... FELICITY HUFFMAN  
 Dwight Grackle ..... GREGORY CRUZ

**UNDERSTUDIES**

*Understudies never substitute for listed performers unless a specific announcement is made at the time of the performance.*

*For Charles Smith — GEOFFREY LOWER  
 For Archer Brown and A Representative of the National Association of Turkey  
 and Turkey By-Products Manufacturers— JEREMY RABB  
 For Clarice Bernstein — SUSAN DENAKER  
 For Dwight Grackle — GREGORY ZARAGOZA*

**STAGE MANAGER**

Elle Aghabala

**TIME/PLACE**

An Office

Act I — Morning

Act II — Evening

Act III — Morning



CLOCKWISE FROM TOP LEFT: Todd Weeks, Rod McLachlan, Gregory Cruz, Ed Begley, Jr., Felicity Huffman. PHOTOS BY CRAIG SCHWARTZ

*November* will be performed without an intermission.

Please turn off all electronic devices such as cellular phones, PDAs, beepers and watch alarms.



The use of any recording device, either audio or video, and the taking of photographs, either with or without flash, is strictly prohibited.

## Who's Who



**ED BEGLEY, JR.** (Charles Smith) starred with Felicity Huffman in David Mamet's *The Cryptogram* at the ART in Boston, a role he reprised for the New York production and again at the Geffen. He also starred in another David Mamet play, *Romance*, at the Taper, and wrote and directed the musical *Cesar and Ruben*, based on the life of Cesar Chavez, at the El Portal Theater in the NoHo Arts District. He has had a long and distinguished career in television and film, earning six Emmy nominations for his role as Dr. Victor Ehrlich on *St. Elsewhere*. He appeared in Christopher Guest's *Best in Show* and *A Mighty Wind*, and starred with Larry David in Woody Allen's *Whatever Works*.



**GREGORY CRUZ** (Dwight Grackle). TV Credits: three seasons as series regular Detective Bobby Stillwater on TNT's *Saving Grace*, *The Closer*, *Criminal Minds*, *In Plain Sight*, *CSI: New York*, *NYPD Blue*, *The Pretender*, *Judging Amy*, *The X-Files*, *Tecumseh*, *Vietnam War Story*, *Manhunt: Search for the Night Stalker* (as Richard Ramirez). Theatre Credits: El Teatro Campesino, Taper, Too, Berkeley Repertory Theatre, Denver Center Theatre Co. In New York, Mr. Cruz created the role of Knuckles in the theatrical production of *Noah's Archives* at the Ohio Theatre. Mr. Cruz was a founding member of Friends & Artists Theater Ensemble in Los Angeles and received a Drama-Logue Award for his portrayal of Macheath in their production of *The Three Penny Opera*.



**FELICITY HUFFMAN** (Clarice Bernstein) is a founding member of the off-Broadway Atlantic Theater Company, where she has been featured in numerous plays including *Dangerous Corner*, *Shaker Heights* and *The Joy of Going Somewhere Definite*. She appeared in David Mamet's *Speed-the-Plow* and received an Obie Award for her portrayal of Donnie in

Mamet's *Cryptogram*. Other stage credits include *Oh Hell* at the Lincoln Center Theater, *Boy's Life* directed by William H. Macy, *The Loop* and *Grotesque Love Songs*. Huffman is best known as Lynette Scavo on the TV series *Desperate Housewives* and received Emmy and SAG Awards for her role. She was nominated for an Academy Award for her role in *Transamerica* and also received a Golden Globe and an Independent Spirit Award. Other film credits include *Phoebe in Wonderland* and *Georgia Rule*.



**ROD MCLACHLAN** (Archer Brown). Broadway: *Holiday*, *The Government Inspector*, *Timon of Athens*, *Saint Joan*, *The Real Inspector Hound*, *Our Town*, *Death and the King's Horseman*. Off-Broadway: *When the Rain Stops Falling*, *School*, *Keep Your Pantheon*, *Observe the Sons of Ulster Marching Towards the Somme*, *Cyrano de Bergerac*, *Edmond*, *Clean*. Regional: *Keep Your Pantheon* and *A Sermon* (Kirk Douglas Theatre), *Dead End* and *Observe the Sons of Ulster* (Williamstown/Huntington), *The Lonesome West* (South Coast Rep). Film: *California Winter*, *Lesster*, *Superhero Movie*, *The Bulls*, *National Treasure*, *Magnolia*, *Where the Money Is*, *Instinct*, *Conspiracy Theory*, *Radioland Murders*. TV: *Medium*, *Quarterlife*, *Boston Legal*, *CSI*, *Numb3rs*, *The Handler*, *Curb Your Enthusiasm*, *The Guardian*, *Judging Amy*, *ER*. Member of Atlantic Theater Company.



**TODD WEEKS** (A Representative of the National Association of Turkey and Turkey By-Products Manufacturers). Mark Taper Forum: *Romance*. Broadway: *The Full Monty* (original cast), *The Last Night of Ballyhoo*, *Summer and Smoke*, *Our Town*. National Tours: *Angels in America*, *How to Succeed in Business Without Really Trying*. Off-Broadway: *Bluebird*, *Keep Your Pantheon*, *The Voyage Inheritance*, *Sea of Tranquility*, *The Cider House Rules* and *Distant Fires* (Atlantic Theater Company), *Boys' Life* and *The Lights* (ATC at Lincoln Center Theater), *Some Americans Abroad* (Second Stage). Television: *Desperate*

*Housewives*, *Modern Family*, *Detroit 187*, *Men of a Certain Age*, *The Defenders*, *Rubicon*, *Numb3rs*, *Medium*, *The Unit*, *Law & Order(s)*, *Ed*, *One Life to Live*. Film: *Light Years*, *Seven Psychopaths*, *The Maiden Heist*, *The Deal*, *Heterosexuals*, *Love Thy Brother*, *Mind the Gap*, *Amos & Andrew*.



**SUSAN DENAKER** (Understudy for Clarice Bernstein). London West End: *Laura Cram*, *Holiday*, *The London Old Vic*; *Maria Feletti*, *Accidental Death of an Anarchist*, *Wyndham's*; *Jean*, *Budgie*, *Cambridge Theatre*; *Rosina*, *Country Life*, *Lyric Hammersmith*; *Blockheads*, *Mermaid*. Regional theatre includes *Lola*, *Come Back*, *Little Sheba*, *Las Vegas*; *Paulina*, *A Winter's Tale*; *Aunt Alicia*, *Gigi*, *Reprise*; *Miss Lucy*, *Sweet Bird of Youth*, *La Jolla Playhouse*; *Beatrice*, *A View From the Bridge*, *Cygnets*; *Frankie*, *Frankie and Johnny in the Clair de Lune*, *Plymouth Theatre Royal*. Film and television includes *American Friends*, *The Woman He Loved*, *Shining Through*, *Accidental Death of an Anarchist*, *As Time Goes By*, *Just a Gigolo*, *Me and My Girl*, *Cover Me*. Over 90 audio books. Classical piano.

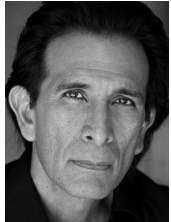


**GEOFFREY LOWER** (Understudy for Charles Smith). Off-Broadway: *Richard II* (NYSF Delacorte Theater in Central Park). National Tour: *The Great Tennessee Monkey Trial* (LATW). Washington, D.C.: *Macbeth*, *Measure for Measure*, *The Merchant of Venice* and *Much Ado About Nothing* (Shakespeare Theatre D.C.). Philadelphia: *Happy Ending* (Philadelphia Drama Critics Award) and *Glass Menagerie* (Bristol Riverside). The Kirk Douglas Theatre: *Much Ado About Nothing*. *The Happy Ones* (South Coast Rep). Many leading roles at Shakespeare Fest Los Angeles. Television: series regular roles on *The Trials of Rosie O'Neill* and *Dr. Quinn, Medicine Woman*. Guest starring roles on *Friends*, *NCIS*, *JAG*, *The Naked Truth*, *Hudson Street*, *NYPD Blue*, among others. Film: *Hook*, *And The Band Played On*, *Johnny Skidmarks*, *Time Share* and others.

**JEREMY RABB**

(*Understudy for Archer Brown/A Representative of the National Association of Turkey and Turkey By-Products Manufacturers*).

National Tours: Julie Taymor's *The King Stag*. Other New York: *I, Vermin* (Fringe Festival); *Crumbs* (Expanded Arts); *Hamlet* (Ritual Theatre); *Debbie Does Dallas*. Regional: *The King Stag* (Yale Rep); *Peter Pan & Wendy, Man & Superman* (A.R.T.); *A Christmas Carol* (Indiana Rep); *Vaudeville* (Virginia Stage); *Fiddler on the Roof, Damn Yankees* (Maine State Music Theatre). Other L.A.: *Rock of Ages* (Prospect); *The Taming of the Shrew, Richard III, Measure for Measure, Twelfth Night* (A Noise Within); *Death of a Salesman* (Classical Theatre Lab). Film: *Her, Let Others Suffer*. Television: *Weeds, Southland, Grey's Anatomy, Off the Map*.

**GREGORY**

**ZARAGOZA** (*Understudy for Dwight Grackle*).

Broadway: *Annie Get Your Gun and Macbeth*. Off-Broadway: *Hot Keys, Two Cities, Two by Two*

and *Sacred Journey*, among others. Film: *The Perfect Family, The Last of the Mohicans, Jordan, Fishes Outta Water, Double Barrel and Land of the Dead*. Television: *The Sopranos, Law & Order, The War That Made America, North & South (Heaven & Hell), Grace & Glorie, New York Undercover, SAG American Indian Actors and The Jury*.

**DAVID MAMET** (*Playwright*) is the author of numerous plays including *Oleanna, Glengarry Glen Ross* (1984 Pulitzer Prize and the New York Drama Critics Circle Award), *American Buffalo, Speed-the-Plow, Boston Marriage, November, Race, and The Anarchist*, opening on Broadway in December. Mamet has written the screenplays for such films as *The Verdict, The Untouchables* and *Wag the Dog*, and has twice been nominated for an Academy Award. He has written and directed 10 films including *Homicide, The Spanish Prisoner, State and Main, House of Games, Spartan* and *Redbelt*. In addition, Mamet has written the novels *The Village, The Old Religion, Wilson* and many books of non-fiction, including *Bambi vs. Godzilla: On the Nature, Purpose, and Practice of the Movie Business* and The New York Times bestseller *The Secret Knowledge: On the Dismantling of American Culture*.

His HBO film *Phil Spector*, starring Al Pacino and Helen Mirren, will air this winter. He was co-creator and Executive Producer of the CBS television show *The Unit*, and is a Founding Member of The Atlantic Theater Company.

**SCOTT ZIGLER** (*Director*). Broadway: *The Old Neighborhood*. Off-Broadway: *The Cherry Orchard* (world premiere, Tom Donaghy adaptation), *The Woods, Sure Thing, Suburban News* (world premiere), *As You Like It* (with Felicity Huffman), *Strawberry Fields* (Atlantic Theater Company). National Tour: *Oleanna*. Regional: *The Cryptogram, A Fair Country* (Steppenwolf Theatre Company); *Romance, Ellen McLaughlin's Ajax in Iraq* (world premiere), *Copenhagen, Animals and Plants, Absolution, The Old Neighborhood* (world premiere), *The Cripple of Inishmaan* (American Repertory Theater); *Race* (Philadelphia Theatre Company); *Glengarry Glen Ross* (McCarter Theatre); *The Cryptogram* (Alley Theatre); *Spinning Into Butter* (Repertory Theatre of St. Louis). Founding member, past Artistic Director and senior acting faculty, Atlantic Theater Company; Director, American Repertory Theater/Moscow Art Theatre School Institute for Advanced Theater Training at Harvard University; Co-author, *A Practical Handbook for the Actor*.

**TAKESHI KATA** (*Scenic Design*). L.A.: *Bones, Two Unrelated Plays by David Mamet and Palomino* (Kirk Douglas Theatre); *Female of the Species, The Seafarer, Boston Marriage* (Geffen). N.Y.: *Through a Glass Darkly, Storefront Church, The Intelligent Design of Jenny Chow* (Atlantic Theater Company), *Adding Machine* (Minetta Lane), Barrow Street Theatre, Civilians, Playwrights Horizons, Vineyard, Rattlestick. Regional: Alley, American Players Theatre, Dallas Theater Center, Ford's Theatre, Goodman, Hartford Stage, Long Wharf, Mark Taper Forum, Nashville Opera, Old Globe, Resident Ensemble Players, Skylight Opera, Steppenwolf, Yale Rep. Awards: Obie, Drama Desk nomination. He is an Assistant Professor at University of Southern California, School of Theatre.

**LAURA BAUER** (*Costume Design*). Broadway: *Glengarry Glen Ross* (2005), *A Life in the Theatre, Speed-the-Plow, November, Top Girls, Frankie and Johnny in the Claire de Lune, One Flew Over the Cuckoo's Nest*. Off-Broadway: Plays over the last 20 years at Circle Rep, Lincoln Center, Manhattan Theatre Club, The Vineyard, Playwrights Horizons, Primary

Stages, Westside Arts, Soho Rep, The Public Theater and the Atlantic Theater, where she is a company member. London: *American Buffalo* at the Donmar Warehouse. Chicago: Many plays with Steppenwolf, Remains and The Goodman Theatre. CTG: *The Subject Was Roses* (Taper), *Palomino* (Kirk Douglas Theatre). Other L.A.: *Superior Donuts, The Escort* (Geffen). Film: *High Fidelity, Sweet and Lowdown, Pieces of April, Spinning into Butter, Better Living, Telling Lies in America*.

**JOSH EPSTEIN** (*Lighting Design*).

Regional Theatre: the Guthrie Theater, The Goodman, Long Wharf Theatre, Paper Mill Playhouse, Alliance Theatre, Actors Theatre of Louisville, Playmaker's Rep., Lyric Theatre, Cincinnati Playhouse in the Park. New York (off-Broadway): New Georges Theatre Company, Juilliard School of Drama, Clubbed Thumb, Target Margin Theater, Rattlestick Playwrights Theater, La MaMa, Naked Angels Theater Company, designed the lighting for the Macy's 2006-2008 New York City Holiday Windows. Opera: Minnesota Opera, Opera Santa Barbara, Wolf Trap Opera Company, Berkshire Opera, Manhattan School of Music. Education: Received MFA from NYU's Tisch School of the Arts. Awards: Recipient of the NEA/TCG Career Development Program for Designers. [www.joshepsteindesign.com](http://www.joshepsteindesign.com).

**ERIKA SELLIN, CSA** (*Casting*) is in her tenth season at CTG – credits include 13, *Black Rider, The Convert, The Lieutenant of Inishmore, This, Water & Power* and more. Film credits include *Crash, A Cinderella Story* and *My Lunch with Larry*. Artios Award for Outstanding Achievement in Casting for *The History Boys* and *Parade*. She is a member of the Casting Society of America, Actors' Equity Association and the Stage Managers' Association. MFA / University of California, San Diego. Special Thanks to Andy Crocker (*November* Casting Associate) Adam O'Byrne (session reader/actor) for their casting contributions.

**BARCLAY STIFF** (*Production Stage Manager*). CTG: *Poor Behavior*. Broadway: *Don't Dress For Dinner, Wit, The House of Blue Leaves, Elling, Enron, Brighton Beach Memoirs, Mary Stuart, The Country Girl, The Seafarer, Inherit the Wind, Losing Louie, Shining City, Whoopi, Hedda Gabler, The Price*. Off-Broadway: *Gruesome Playground Injuries, Farragut North, Beauty of the Father, A Picasso, House/Garden, From Door to Door, Juvenilia,*

Frank's Home, Debbie Does Dallas, Fully Committed. Williamstown: eight seasons — Ritchie era.

**ELLE AGHABALA** (*Stage Manager*) is thrilled to be a part of this wonderful production. New York: *Epitaph for George Dillon, The Time of Mendel's Trouble, The Bubble*. National Tours: 2004 *Gymnastics Tour, Annie* (30th Anniversary Tour). Las Vegas: *Hairspray, Avenue Q, Phantom - The Las Vegas Spectacular, Hans Klok: The Beauty of Magic, Blue Man Group*. Center Theatre Group: *Ain't Misbehavin', Eclipsed, Palestine, New Mexico, The Wake, An Evening with Sutton Foster, Venice, Circus INcognitus, The Author, The Cripple of Inishmaan, Juan and John, The Method Gun, This, A Raisin In The Sun*, as well as numerous readings and workshops. International City Theatre: *The Threepenny Opera* and *Leading Ladies*. Elle would like to thank her family and friends for all of their love and support.

**MICHAEL RITCHIE** (*Artistic Director*) is in his eighth season as Center Theatre Group's Artistic Director, and has led over 100 productions to the Ahmanson, Taper and Douglas stages since his arrival in 2005. From 1996 to 2004 Michael was the Producer of the Williamstown Theatre Festival and prior to that he was a Production Stage Manager in NYC. At CTG, he premiered six musicals that moved to Broadway — *The Drowsy Chaperone* (which won 13 Tony Award nominations), *Curtains* (eight Tony nominations), *13, 9 to 5: The Musical, Bloody Bloody Andrew Jackson* and *Leap of Faith*. He has produced 30 world premieres including the musicals *Minsky's, Venice* and *Sleeping Beauty Wakes*, and the

plays *Bengal Tiger at the Baghdad Zoo* (a Pulitzer Prize finalist that also moved to Broadway), *Water & Power* and *Yellow Face*, and he presented a broad range of plays and musicals ranging from *Dead End* to *The Black Rider* to *Edward Scissorhands* to blockbusters such as *God of Carnage, Mary Poppins, Jersey Boys* and *August: Osage County*. In addition, Michael inaugurated CTG's New Play Production Program, designed to foster the development and production of new works.

**EDWARD L. RADA** (*Managing Director*) returned to Center Theatre Group last year after previously serving as CTG's Chief Financial Officer for 12 years (1996–2008). Rada spent the past three years as President of the Music Center Foundation, a non-profit corporation that holds and invests the endowment and reserve funds for the Music Center and its resident companies (including CTG). Prior to his years at CTG, he was the Director of Finance at The Old Globe in San Diego and principal of Rada & Associates, an accounting firm that specialized in entertainment-related non-profit organizations and theatrical productions. He is a graduate of Occidental College in Los Angeles with numerous post-graduate coursework and credentials. He currently serves on the board of trustees for the pension, health and welfare and 401(k) plans of I.A.T.S.E. Local 33 Stagehands Union, on the board of directors of Theatre@Boston Court, and on the board of United Support of Artists for Africa/USA for Africa, among other affiliations.

**DOUGLAS C. BAKER** (*Producing Director*) is now in his 23rd season at CTG. Previously, he managed Broadway and touring

productions including *Tru, Born Yesterday, The Gospel at Colonus, Annie, A Chorus Line, Working, The Wiz* and *Legends!* starring Mary Martin and Carol Channing which premiered at the Ahmanson Theatre in 1986. Baker is a graduate of Albion College, is an active member of the Broadway League, the Independent Presenters Network and is a proud member of the Association of Theatrical Press Agents and Managers.

**NEEL KELLER** (*Associate Artistic Director*). For CTG Neel has directed *Pyrenees, Stones in His Pockets* and *Good Thing*. He has also directed and produced plays and musicals at theatres across the country and served, in wildly varying capacities, on the staffs of La Jolla Playhouse, Williamstown Theatre Festival, Remains Theatre, Lincoln Center Theater, the American National Theatre and *Jerome Robbins' Broadway*.

**GORDON DAVIDSON** (*Founding Artistic Director*) led the Taper throughout its first 38 seasons, guiding over 300 productions to its stage and winning countless awards for himself and the theatre — including the Tony Award for theatrical excellence, Margo Jones Award, The Governor's Award for the Arts and a Guggenheim fellowship. *The Kentucky Cycle* and *Angels in America* (Part One) won the Pulitzer in consecutive years and, in 1994, three of the four plays nominated for the Tony Award for Best Play were from the Taper (*Angels in America* won). In 1989 Gordon took over the Ahmanson and, in 2004, he produced the inaugural season in the Kirk Douglas Theatre.

**ADDITIONAL STAFF AND CREDITS FOR NOVEMBER**

Assistant Director . . . . . Julianne Kusmierczyk  
 Sound Consultant . . . . . Cricket S. Myers  
 Fight Consultant . . . . . Steve Rankin  
 Production Assistant . . . . . T.J. Kearney  
 Assistant Lighting Designer . . . . . Heather Graff  
 Assistant Costume Designer . . . . . Steven Hawley  
 Ms. Huffman's Wig . . . . . Rick Geyer  
 Prop Shoppers . . . . . Kis Knekt, Sarah Steinman

**Credits**

Set construction by F&D Scene Changes, Ltd.  
 Additional lighting equipment provided by PRG Lighting Los Angeles. Costumes provided by the Center Theatre Group Costume Shop and additional staff: Cutter/Draper - Enrique Urbina; Costumers - Elizabeth A. Cox, Mara Holland; Stitcher - Ophelia Brown; Crafts/First Hand - Margarita Witherspoon.  
 Bespoke Tailoring by Johnathan Behr.  
 Driver - Zach Istrin. Production and rehearsal photography by Craig Schwartz.

**Special Thanks**

L.A. Stripping and Finishing Center

**Website**  
 CenterTheatreGroup.org  
 Facebook.com/CTGLA  
 Twitter.com/CTGLA



The Actors and Stage Managers employed in this production are members of Actors' Equity Association, the Union of Professional Actors and Stage Managers in the United States.

This Theatre operates under an agreement between the League Of Resident Theatres and Actors' Equity Association, the Union of Professional Actors and Stage Managers in the United States.



The following employees are represented by the International Alliance of Theatrical Stage Employees, Moving Picture Machine Operators, Artists and Allied Crafts of the United States, its Territories and Canada, AFL-CIO, CLC: Stage Crew Local 33; Local Treasurers and Ticket Sellers Local 857; Wardrobe Crew Local 768; Make-up Artists and Hair

Stylists Local 706. The manager and press agent of this theatre are members of the Association of Theatrical Press Agents and Managers.



United Scenic Artists represents the designers and scenic painters for the American theatre.



The Director is a member of the Stage Directors and Choreographers Society, a national theatrical labor union.



Center Theatre Group is a member of the American Arts Alliance, the Broadway League, Independent Producers' Network (IPN), LA Stage Alliance, League of Resident Theatres (LORT), National Alliance for Musical Theatre (NAMT) and the Theatre Communications Group (TCG).

Latecomers will be seated at the discretion of the management. Patrons with disabilities: wheelchair seating is available in a variety of theatre locations. When ordering your tickets, please indicate any special needs. For our hearing-impaired guests, the theatre is equipped with listening devices; please contact an usher for assistance.

**CENTER THEATRE GROUP L.A.'s Theatre Company**  
 MICHAEL RITCHIE, Artistic Director    EDWARD L. RADA, Managing Director  
 DOUGLAS C. BAKER, Producing Director

**ARTISTIC**

NEEL KELLER ..... Associate Artistic Director  
 KELLEY KIRKPATRICK ..... Associate Artistic Director  
 DIANE RODRIGUEZ ..... Associate Producer/Director of New Play Production  
 PIER CARLO TALENTI ..... Resident Dramaturg/Literary Manager  
 LINDSAY ALLBAUGH ..... Producing Associate  
 MALCOLM K. DARRELL ..... New Play Production Associate  
 JOY MEADS ..... Literary Associate  
 ERIKA SELLIN ..... Director of Casting  
 MARK B. SIMON ..... Casting Director  
 ANDY CROCKER ..... Casting Associate  
 KEVIN L. CORDOVA ..... Casting Administrator  
 BRIANNA SARPY ..... Casting Intern

DAVE ALTON ..... Chief Information Officer  
 STAN GRUSHESKY ..... Director of Information Systems  
 SEAN PINTO ..... Database And Web Manager  
 MANDY RATLIFF ..... TESSITURA Administrator  
 JARED WATANABE ..... Information Systems Analyst

MADRIO FLEEKES ..... Interim Senior Human Resources Generalist  
 JENNIFER ACHTERBERG ..... Facilities Manager  
 SINGER LEWAK, LLP ..... Auditor  
 MICHAEL C. DONALDSON, LISA A. CALLIF ..... Legal Counsel  
 GIBSON, DUNN & CRUTCHER ..... Legal Counsel

THE BURGLARS OF HAMM, TANYA BARFIELD, KRISTOFFER DIAZ, JUSTIN ELLINGTON,  
 STEVEN EPP, GINA GIONFRIDDO, SAM GOLD, JOE HORTUA, DANIEL ALEXANDER  
 JONES, NICK JONES, RAJIV JOSEPH, DAVE MALLOY, LAURAL MEADE, JULIE MARIE MYATT  
 (FADIMAN), DAN O'BRIEN, EVANGELINE ORDAZ, WILL POWER (FADIMAN), MATT SAX,  
 DOMINIQUE SERRAND, UNIVERSES ..... Commissioned Artists

DEVELOPMENT  
 YVONNE CARLSON BELL ..... Director of Development  
 PATRICK OWEN ..... Deputy Director of Development  
 NATALIE BERGESON ..... Director of Donor Contributions  
 JEAN KLING ..... Director of Institutional Support  
 LIZ LIN ..... Director of Donor Communications  
 CHARITY WU ..... Director of Individual Giving  
 BECKY BIRDSONG ..... Major Gifts Officer  
 SANDRA EBEJER ..... Institutional Giving Officer  
 RICK LEE ..... Donor Contributions Supervisor  
 JENNIFER RYEN ..... Major Gifts Manager  
 ERIC BROWN ..... Communications Coordinator  
 JAMIE CATALDO ..... Grants Writer  
 JENNIFER CHAN ..... Development Assistant  
 DONALD JOLLY ..... Donor Relations Associate for the Inner Circle  
 MANDI OR ..... Special Events Manager  
 MARIA PAREDES ..... Donor Relations Associate for The Guild  
 COURTNEY ROBERTSON ..... Institutional Giving Associate  
 ERIN SCHLABACH ..... Donor Contributions Associate  
 ELIZABETH WACHTEL ..... Major Gifts Assistant

ZAKIYYAH ALEXANDER, SHEILA CALLAGHAN, JONATHAN CENICEROZ,  
 MATT GOULD, GRIFFIN MATTHEWS, MEG MIROSHNIK, TANYA SARACHO,  
 JOHN SINNER ..... CTG Writers' Workshop Members

AL BERMAN, GINA EAST, LILI HERRERA, TONY LOWELLEN, JESSICA NASH,  
 HOLLY RAMOS, NICOLE SCIPIONE, LENA THOMAS, BILL WALTON,  
 REHA ZAMANI ..... Donor Advisors  
 ADAM BURCH, KARLA GALVEZ ..... Donor Services Associates  
 ANNE BRUNER, MARCI MILLER, JULIE NADAL, TAMÉE SEIDLING ..... Development Volunteers

**EDUCATION AND COMMUNITY PARTNERSHIPS**

LESLIE K. JOHNSON ..... Director of Education and Community Partnerships  
 DEBRA PIVER ..... Associate Director of Education and Community Partnerships  
 TRACI CHO ..... Director of School Partnerships  
 PATRICIA GARZA ..... Senior Manager for Education and Community Partnership  
 CAMILLE SCHENKMAN ..... Educational Programs Manager  
 DAN HARPER ..... Educational Programs Associate  
 ASHLEY OPSTAD ..... Educational Programs Associate  
 KELLY CHRIST ..... Educational Communications Coordinator  
 VICTOR VAZQUEZ ..... Educational Services Coordinator  
 SHANNON WINSTON ..... Assistant to the Director of Education and Community Partnerships

**MARKETING AND COMMUNICATIONS**

JIM ROYCE ..... Director of Marketing, Communications and Sales  
 NANCY HEREFORD ..... Director of Media and Communications  
 PHYLLIS MOBERLY ..... Media and Communications Associate  
 JASON MARTIN ..... Media and Communications Associate  
 SHANNON SMITH ..... Media and Communications Assistant  
 LYN COWAN ..... Interim Media and Communications Assistant

**MANAGEMENT AND ADMINISTRATION**

NAUSICA STERGIOU ..... General Manager (Mark Taper Forum, Kirk Douglas Theatre)  
 JEFFREY UPAH ..... General Manager (Ahmanson Theatre)  
 SUZANNE HEE MAYBERRY ..... Assistant General Manager (Mark Taper Forum)  
 KATIE BRUNER SOFF ..... Assistant General Manager (Kirk Douglas Theatre, New Play Production)  
 ALANA BEIDELMAN ..... Executive Assistant to Managing Director  
 LIZ LYDIC ..... Assistant to Producing Director

CHRISTOPHER KOMURO ..... Art Director  
 IRENE KANESHIRO, NISHITA DOSHI ..... Senior Designers  
 HARUKA HAYAKAWA ..... Graphic Designer  
 TERESA ENGLISH ..... Junior Graphic Designer

**ERIC SIMS**

ERIC SIMS ..... Operations Manager (Kirk Douglas Theatre)  
 TOM BURMESTER ..... Performance Manager (Kirk Douglas Theatre)  
 LAUREN BAXA ..... Assistant Performance Manager (Kirk Douglas Theatre)  
 MIKE KINDLE ..... Facilities Assistant (Kirk Douglas Theatre)  
 SONDRRA MAYER ..... Concessions Manager (Kirk Douglas Theatre)

**PRODUCTION**

ALYS E. HOLDEN ..... Director of Production

JONATHAN BARLOW LEE ..... Production Manager (Mark Taper Forum)  
 CELESTE SANTAMASSINO ..... Associate Production Manager (Mark Taper Forum)  
 KATE COLTUN ..... Interim Assistant Production Manager (Mark Taper Forum)  
 EMMETT KAISER ..... Master Carpenter (Mark Taper Forum)  
 ROBERT RUBY ..... Master Propertyman (Mark Taper Forum)  
 WILLIAM MORNER ..... Master Electrician (Mark Taper Forum)  
 BONES MALONE ..... Master Soundman (Mark Taper Forum)  
 DENNIS SEETOO ..... Wardrobe Supervisor (Mark Taper Forum)  
 RICK GEYER ..... Hair & Make-up Supervisor (Mark Taper Forum)  
 LINDA WALKER ..... House Manager (Mark Taper Forum)

AMELIA HEAPE ..... Associate Director of Marketing  
 ANDREW DARCEY ..... Advertising Manager  
 JIM HALLORAN ..... Marketing Associate, Creative  
 JOEY OLIVA ..... Marketing Associate, Operations  
 ROSE POIRIER ..... Webmaster  
 CRAIG SCHWARTZ ..... Production Photographer  
 LARRY DEAN HARRIS ..... Copywriter  
 CINEVATIVE/MARK CIGLAR ..... Production Video  
 TOM BURMESTER, TREVOR ALGATT, KEVIN MAPP ..... Event Video  
 ALLIED LIVE: LAURA MATALON, LESLEY-ANNE STONE, KELLY ESTRELLA ..... Advertising Agency

RICHARD PETERSON ..... Master Electrician (Kirk Douglas Theatre)  
 ADAM PHALEN ..... Head Audio (Kirk Douglas Theatre)

**TICKET SALES AND SERVICES**

SHAWN ROBERTSON ..... Ticket Sales Director  
 SKYPP CABANAS ..... Ticket Operations Coordinator  
 SANDY CZUBIAK ..... Audience and Subscriber Services Manager  
 JENNIFER BAKER, CHERYL HAWKER, RICHARD RAGSDALE ..... Audience Services Supervisors  
 ALICE CHEN ..... Audience Services Asst. Supervisor  
 SAM AARON, DEBORAH REED ..... Audience Services Sales Associates

JOE HAMLIN ..... Technical Director  
 CHAD SMITH ..... Assistant Technical Director  
 SAM CRAVEN-GRIFFITHS ..... Assistant Technical Director  
 SARAH SOWELL ..... Shop Foreperson

DAWN HOLISKI ..... Shop Director  
 ANDREW THIELS ..... Prop Manager  
 MERRIANNE NEDREBERG ..... Prop Lead  
 SARAH KRANIN ..... Prop Shopper  
 CANDICE CAIN ..... Costume Shop Director  
 BRENT M. BRUIN ..... Workroom Supervisor  
 ELIZABETH LEONARD ..... Production Operations Manager  
 JULIO A. CUELLAR ..... Driver/Custodian  
 EUGENE A. MONTEIRO II, BRIAN SLATEN ..... Drivers

JEREMIE ARENCIBIA, VICKI BERNDT, RJ CANTU, CARLOS D. CHAVEZ, JR.,  
 PETER COLBURN, HESPER COLOHAN, DONALD CRANDALL, GARY HOLLAND,  
 KAY LOCHARD, JUSTINE PEREZ, LEX SAVKO, DANNY SCHMITZ,  
 CRIS SPACCA, TRAVIS WOOD ..... Audience Services Representatives

MELODY MATTOS ..... Production Business Manager  
 CHRISTY WEIKEL ..... Interim Production Administrator

DANUTA SIEMAK ..... Subscriber Services Supervisor  
 CHRISTINA GUTIERREZ ..... Subscriber Services Asst. Supervisor  
 LIGIA PISTE, CELIA RIVAS ..... Subscriber Services Senior Representatives  
 IRENE CHUANG, PETER STALOCH ..... Subscriber Services Representatives

SHAWN ANDERSON ..... Master Carpenter (Ahmanson Theatre)  
 ANDREW W. ARNOLD ..... Flyman (Ahmanson Theatre)  
 JIM BERGER ..... Master Electrician (Ahmanson Theatre)  
 STAN STEELMON ..... Master Propertyman (Ahmanson Theatre)  
 ROBERT SMITH ..... Master Soundman (Ahmanson Theatre)  
 MICHAEL GARDNER ..... Wardrobe Supervisor (Ahmanson Theatre)  
 PATRICE MIRANDA ..... Hair Supervisor (Ahmanson Theatre)  
 CHRISTINE L. COX ..... House Manager (Ahmanson Theatre)

SARAH K. GONTA ..... Box Office Treasurer  
 KISHISA ROSS, GISELE FRAZEUR ..... Assistant Treasurers  
 YULIZA BARRAZA, ANGELICA CARBAJAL, MICHAEL KEMPISTY,  
 LEROY PAWLOWSKI, MICHAEL SALTZMAN ..... Box Office Staff

**FINANCE, INFORMATION SYSTEMS AND HUMAN RESOURCES**

MICHAEL F. THOMPSON ..... Chief Financial Officer  
 DANA KELLY ..... Controller  
 JANIS BOWBEER ..... Assistant Controller  
 FELICISIMA LAPID ..... Accounts Payable Supervisor  
 ALEGRIA SENA ..... Staff Accountant  
 DANNY LAMPSON ..... Staff Accountant  
 YUEN KI "ANNIE" LAW ..... Payroll Manager  
 AMEETA SHARMA ..... Payroll Specialist

MICHAEL ZOLDESSY ..... Account Sales Manager  
 EILEEN ROBERTS ..... Account Sales Associate

KERRY KORF ..... Priority Services Director  
 SUSAN F. TULLER ..... Priority Services Operations Manager  
 JAY BURNS ..... Priority Services Sales Manager  
 PAUL CUEN ..... Priority Services Manager

CAROLE BAXTER, RUSTY COLLINS, SUZANNE "MAGGIE" DODD, MARC "BYRON"  
 DROTMAN, LOU GEORGE, KATE HALL, JERRY JOHNSTON, LISA KESSLER, SHEP KOSTER,  
 LES KUYKENDALL, ELENA MUSLAR, MATT PELFREY, EDWARD "MAX" RAZOR, JASMINE  
 REGALA, KEN SALLEY, BOBBI LYNNE SCOTT, DAVE SHALANSKY, MICHAEL SMITH, JEFFREY  
 STUBBLEFIELD, QUINN SULLIVAN, DIANE WARD, JIM WATERMAN,  
 CANDICE WALTERS ..... Representatives