



FIRST SEASON PRODUCTION

World Premiere

ALMA

by Benjamin Benne

Directed by Juliette Carrillo

MARCH 6 – APRIL 3, 2022

SECOND SEASON PRODUCTION

A Co-Production with Playwrights Horizons

World Premiere Production

TAMBO & BONES

by Dave Harris

Directed by Taylor Reynolds

MAY 1 – MAY 29, 2022

THIRD SEASON PRODUCTION

BLOCK PARTY

The Los Angeles LGBT Center

Production of

TO T, OR NOT TO T?

A COMEDIC TRANS JOURNEY THROUGH
(T)ESTOSTERONE AND MASCULINITY

Written and Performed by D'Lo

Direction and Dramaturgy by Adelina Anthony

JUNE 25 – JULY 10, 2022

Sacred Fools Theatre Company

Production of

THE ART COUPLE

by Brendan Hunt

Directed by Lauren Van Kurin

AUGUST 13 – AUGUST 28, 2022



friend.
insider.
visionary.

you!

YOUR MEMBERSHIP EXPERIENCE AT CENTER THEATRE GROUP

Live theatre is finally back—all thanks to generous theatre-lovers like you who made it possible.

As a nonprofit organization, Center Theatre Group relies on the generosity of our supporters. Become a member with a tax-deductible contribution of \$100—or just \$10 per month—and make a vital difference for our future following the most challenging period in Center Theatre Group's history. Plus, your gift will unlock membership benefits to enhance your theatregoing experience, from priority ticket access to members-only events and more!

Learn more at CTGLA.org/membership

QUESTIONS?

Call our Membership Concierge at **213.972.7564** or email membership@CTGLA.org

friends

Friends get first access to tickets before the general public plus invitations to members-only events, including tours and rehearsals. *Join today with a gift of \$100 or more—or just \$10 per month.*

insiders

Insiders enjoy a year-round VIP experience with access to the best seats for our shows, concierge service for house seats at New York and London productions, and special behind-the-scenes events. *Join today with a gift of \$2,500 or more.*

visionaries

Visionaries have the ultimate access to our artists, shows, programs, and staff, with premium seating for our productions, including use of The Founders' Room at the Ahmanson, and invitations to private salon-style artist events. *Join today with a gift of \$15,000 or more.*

**CENTER
THEATRE
GROUP**

Center Theatre Group

In Cooperation with American Blues Theater

Presents the World Premiere of

ALMA

By

Benjamin Benne

With

Sabrina Fest Cheryl Umaña

Scenic Design

Tanya Orellana

Costume Design

Carolyn Mazuca

Lighting Design

Lonnie Rafael Alcaraz

Sound Design and Original Music

Daniel Corral

Fight Director

Edgar Landa

Casting

**Morales/O'con Casting
Rosalinda Morales
Pauline O'con, CSA**

Production Stage Manager

Miriam Mendoza

CTG Associate Artistic Directors

**Luis Alfaro
Kelley Kirkpatrick**

Directed by

Juliette Carrillo

Alma (formerly titled *#nowall*) was developed during a residency at the Eugene O'Neill Theater Center's National Playwrights Conference in 2018. Preston Whiteway, Executive Director; Wendy C. Goldberg, Artistic Director

Alma (formerly titled *#nowall*) was also developed with support from Denver Center for the Performing Arts 2020 Colorado New Play Summit, Seattle Repertory Theatre, and The Playwrights' Center's 2016-17 Many Voices Fellowship. *Alma* was the winner of Arizona Theatre Company's 2019 National Latinx Playwriting Award and the 2019 Blue Ink Playwriting Award from American Blues Theater, Chicago, IL.

Dramaturgy and Spanish translations by Catherine María "Cat" Rodríguez with additional contributions from Elena Araoz, Cynthia Bastidas, Ana Maria Campoy, and Marcela Lorca.

MAR 6 – APR 3, 2022 **KIRK DOUGLAS THEATRE**

CAST

(In order of appearance)

Alma..... CHERYL UMAÑA

Angel..... SABRINA FEST

Alma will be performed without an intermission

Assistant Stage Manager
Whitney N. Carter

UNDERSTUDIES

Understudies never substitute for a listed performer unless a specific announcement is made at the time of the performance.

Angel..... Bianca Ruiz Brockl

Alma..... Marilyn Camacho

PLEASE TURN OFF ALL ELECTRONIC DEVICES SUCH AS CELLULAR PHONES AND WATCH ALARMS. THE USE OF ANY RECORDING DEVICE, EITHER AUDIO OR VIDEO, AND THE TAKING OF PHOTOGRAPHS, WITH OR WITHOUT FLASH, IS STRICTLY PROHIBITED.

WHO'S WHO

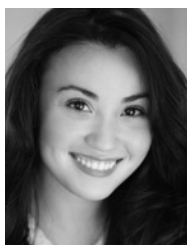
CAST



CHERYL UMAÑA (*Alma, she/her/hers*)

Cheryl Umaña is a graduate of the UCLA School of Theatre Film and Television and of the LACC Theatre Academy. She is an L.A. native with strong roots in Guatemala. She has had the pleasure of working with various theatre companies throughout L.A. Some of which include The Latino

Theatre Company (*Mother of Henry, La Virgen*) Company of Angels (*This Land*), Artists at Play (*In Love and Warcraft*) and Breath of Fire (*Digging up the Dirt*). Most recently, she had the wonderful experience of performing in Luis Alfaro's *Mojada* at the exquisite Repertory Theatre of St Louis. Cheryl first worked with CTG in their wonderful Library Play Reading Series in Boyle Heights as well as in their Community Stories program. She is very honored to be part of *Alma*, helping to tell our stories and lifting up the Latino experience in our country.



SABRINA FEST (*Angel, she/her/hers*)

is a 25-year-old triple threat. Along with four years of formal training at the University of Southern California's School of Dramatic Arts, she has studied classical piano for 12 years, and has also been dancing for 20 years with 12 years of ballet training, 10 years of traditional Chinese dance, and

five years of competitive Latin Salsa. With a vocal range of E3 to C6, Ms. Fest has sung principal roles such as Sarah Brown in *Guys and Dolls* and Cosette in *Les Mis* as well as ensemble roles in *Grease, The Wild Party*, and Helga in *Cabaret*. Ms. Fest has been featured in multiple voice-over ventures, including commercials for McDonald's, guest starring as Meli Ramos on Nickelodeon's *The Loud House*, Neonlicious in the OMG Dolls franchise *LOL Surprise*, and more. She is represented by CESD and Symington Talent Management.

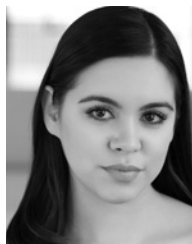


MARILYN CAMACHO (*Understudy Alma, she/her/hers*)

is excited to be back in a theatre and working with CTG! Marilyn, a Southside Chicago native, is an actor, director, and filmmaker, now happy to call Los Angeles her second home. She has performed on many stages throughout her career, notably, at Steppenwolf

Theatre, The Goodman, Victory Gardens, and with UrbanTheater Company (UTC), where she is a founding member and served as former Artistic Director. UTC has produced plays that include *Short Eyes, Cuba and His Teddy Bear, Brainpeople, Water and Power, Fucking A*, and others. Aside from theatre, Marilyn can be seen on TV in the recent film *Never And Again*, and in shows such as: *American Gods, Animal Kingdom*,

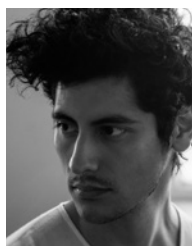
Chicago Fire, *Scandal*, and many more. Currently, she is developing content with her team at her production company, Caribeña Creatives, where they are dedicated to bringing multicultural stories to screen. Follow: @sheismarilync



BIANCA RUIZ BROCKL (*Understudy Angel, she/her/hers*) is a B.F.A. graduate from California Institute of the Arts. Her credits include appearances on the film *TIMER*, the TV show *ER*, and various shows on the Disney Channel. Bianca has also performed at the REDCAT Theater and the Walt Disney Concert Hall with the Los Angeles Philharmonic.

Bianca thanks her parents, siblings, and loved ones who have supported her on this journey.

CREATIVES



BENJAMIN BENNE (*Playwright, he/him/his*) was born and raised in Los Angeles County and, as an adult, has lived in the Pacific Northwest, Midwest, and now resides on the East Coast, where he is a David Geffen/Yale School of Drama M.F.A. Candidate in Playwriting and represented by Paradigm Talent Agency. He is a current member of the

Dorothy Stelsin New American Writers Group at Primary Stages (NYC) and under commission from South Coast Repertory Theatre (Costa Mesa, CA). Scheduled productions in 2022 include *Alma* at ArtsWest (Seattle, WA) and American Blues Theater (Chicago, IL) and the World premiere of *In His Hands* at Mosaic Theater Company (DC). His artistic journey began by doodling renderings of Noah's Ark in church and when he wrote (and illustrated) his prize-winning little book *The Tale of the Adventurous Penguins* in 5th grade. He is so grateful to his first drama teacher: Arik Boles, first playwriting teacher: Susan Merson, first playwriting mentor: Rebecca Tourino Collinsworth, current teachers and mentors: Anne Erbe, Amy Herzog, Tarell Alvin McCraney, and Sarah Ruhl, and his dear friend and collaborator: Cat Rodriguez—without them, Ben wouldn't be the playwright he is. benjaminbenne.com



JULIETTE CARRILLO (*Director, she/her/hers*). Juliette has directed critically acclaimed premiere and revival productions in theatres across the country including Oregon Shakespeare Festival, Mark Taper Forum, South Coast Repertory, Yale Repertory, Denver Theater Center, Arena Stage, and Seattle Repertory. Her recent

World premiere, Carmen Aguirre's *Anywhere But Here*, was produced in Vancouver, B.C., with current plans to tour internationally. As a member of the Cornerstone Theater ensemble, she has developed work for and with various communities such as the East Salinas farm working

community, the addiction and recovery community, the Hindu community and seniors and their caregivers. She is a recipient of several awards, including the prestigious National Endowment of the Arts/Theatre Communications Group Directing Fellowship and the Princess Grace Award. She was also chosen by Sundance Theater Institute to participate in the Sundance/Luma Foundation Theater Directors' Retreat in Arles, France. She is a Yale School of Drama graduate and on faculty at University of California, Irvine. juliettecarrillo.com



TANYA ORELLANA (*Scenic Designer, she/her/hers*) designs performance spaces for theatre, opera and immersive experiences. Collaborations include *The Winter's Tale* directed by Eric Ting (Cal Shakes), *The Kind Ones* by Miranda Rose Hall directed by Lisa Peterson (Magic Theatre), *The Industry's Sweet Land*, an immersive opera directed by Yuval Sharon

and Cannupa Hanska Luger and the Mexico premiere of *Angels in America* directed by Martín Acosta (Mexico City). Originally from San Francisco's Mission District, she has been a core member of the award-winning ensemble Campo Santo since 2008, participating in their intimate new work process, conceptualizing, and designing sets alongside the writing process. She is a member of Wingspace Theatrical Design and an organizing member of La Gente: The Latinx Theatre Design Network. Tanya received her M.F.A. in Scenic Design from CalArts and is the 2016 recipient of the Princess Grace Fabergé Theatre Award.



CAROLYN MAZUCA (*Costume Designer, she/her/hers*) is a Texas born and Los Angeles-based costume designer for stage and screen. Her theatrical designs have decorated productions at Repertory Theatre of St. Louis, Arena Stage, Berkeley Repertory Theatre, Oregon Shakespeare Festival, South Coast Repertory, and more. Her

industry experience recently collided in her designs of filmed theatrical productions *Tomás* and *The Library Lady* and *Puss in Boots* with Repertory Theatre of St. Louis. In Carolyn's screen career—she is an active member of the IATSE Costume Designers Guild 892. She is the Costume Designer of *What? and Retribution* as well as an Assistant Costume Designer on HBO's *Perry Mason* season two. Carolyn earned her B.F.A. in Costume Design from Carnegie Mellon University. Carolyn can't wait to see what amazing future projects await her! carolynmazuca.com [@carolynmazuca](https://twitter.com/carolynmazuca)

LONNIE RAFAEL ALCARAZ (*Lighting Designer, he/him/his*) is a professor at the University of California, Irvine, where he is the head of the lighting program. He has designed for various regional theatres around the country. Recent designs include *Opera Festival on Ice* for Bietak Production (Muscat, Oman), *Curie Curie* for Transversal Theatre Company in Irvine, CA and Warsaw, Poland, *A Christmas Carol* at the Denver Center,



American Mariachi and *A Shot Rang Out* at South Coast Repertory, *All is Calm* at the Alabama Shakespeare Festival; *Mojada* at Oregon Shakespeare Festival, and Portland Center Stage. He is an associate artist at South Coast Repertory and Cornerstone Theater Company and is the Resident Lighting Designer at South Coast Repertory, Great River Shakespeare

Festival, and Ballet Repertory Theatre. He is a member of the United Scenic Artists, Local 829/International Alliance of Theatrical Stage Employees. His complete design portfolio can be found at lradesigns.com.



DANIEL CORRAL (*Sound Design & Original Music, he/him/his*) is a mixed heritage Filipino-American sound artist born and raised in Eagle River, Alaska. In Los Angeles since 2005, his work includes accordion orchestras, microtonal electronics, video, handmade music boxes, sound installations, chamber music, puppet

operas, and interdisciplinary collaborations. Corral's music has been commissioned and presented around the world, including BAM's Next Wave Festival, Sundance Film Festival, REDCAT, MATA, Miami Light Project, Operadagen Rotterdam, Walt Disney Concert Hall, Göteborg Art Sound Festival, Center for New Music, Pianospheres, and the Carlsbad Music Festival. Corral taught at CalArts from 2016 to 2020 and the Los Angeles DCA declared him a 2019–2020 Cultural Trailblazer. Past residencies include APPEX, Marin Headlands Center for the Arts, I-Park, the Banff Centre, and Djerassi. His music has been released by Populist Records, Orenda Records, Innova Recordings, the wulf. records, MicroFest Recordings, and independently. His teachers include James Tenney and Anne LeBaron.



EDGAR LANDA (*Fight Director, he/him/his*) is an actor/director and creates fights and violence for theatres large and small. Fight credits include: Geffen Playhouse, San Diego Rep, South Coast Repertory, The Wallis, Kirk Douglas Theatre, Mark Taper Forum, and Tennessee Shakespeare Company. He has choreographed mayhem for many of Los

Angeles' intimate theatres including Fountain Theatre, Sacred Fools and Playwrights Arena. Edgar serves on the faculty of the USC School of Dramatic Arts and is a long-time collaborator of Son of Semele Ensemble. He is an SDC and AEA member and supporter of intimate theatre in Los Angeles. edgarlanda.com

MORALES/O'CON CASTING (*Casting*) Rosalinda Morales and Pauline O'con, CSA have been collaborating for over 14 years. Their meeting was fated when Pauline was the Industry/Talent Relations Manager at the Los Angeles Latino International Film Festival (LALIFF) where Rosalinda had several short films

being showcased. Upon discussing their casting knowledge from the theatre, independent film, network television and studios, they band together to begin crafting new, unique, and fun casting experiences. Morales/O'con Casting enjoy collaborating with their writers, directors, producers, executives, and filmmakers to bring life to each project and to showcase the diverse, progressive culture of today's audiences. They are both thrilled to be back casting theatre for the Center Theatre Group team.



MIRIAM MENDOZA (*Production Stage Manager, she/her/hers*) is an El Paso, Texas native who graduated from University of Texas at El Paso with her B.F.A. in Stage Management (2016). Miriam then moved to Southern California where she received her M.F.A. in Stage Management from University of California, Irvine. She continues to work as an educator and stage

manager in the greater Los Angeles area as well as a Guest Talent Coordinator for Disney's Imagination Campus at the Disneyland Resort. Miriam is grateful to be working with a fantastic team on her first production at Center Theatre Group. Miriam is grateful for her family and Abel's endless support.

CENTER THEATRE GROUP



MEGHAN PRESSMAN (*Managing Director/CEO, she/her/hers*) joined Center Theatre Group as Managing Director in 2019. Previously, she served as Managing Director of Woolly Mammoth Theatre Company (D.C.), Director of Development for Signature Theatre (N.Y.), and Associate Managing Director of Berkeley Rep, in

addition to working at numerous other theatre and arts organizations across the country. She is the Vice-Chair of the National Board for the Theatre Communications Group (TCG).



DOUGLAS C. BAKER (*Producing Director, he/him/his*) is now in his 30th season at Center Theatre Group. He is an active member of the Broadway League, the Independent Presenters Network, and is a proud member of the Association of Theatrical Press Agents and Managers. In May 2013, Doug received the Broadway League's prestigious Outstanding

Achievement in Presenter Management Award.



LUIS ALFARO (*Associate Artistic Director, he/him/his*) is pleased to return to Center Theatre Group after 17 years. A Chicano playwright born and raised in downtown Los Angeles, he has received fellowships from the John D. and Catherine T. MacArthur Foundation; United States

Artists; Ford Foundation Art of Change; Joyce Foundation; Mellon Foundation and is the recipient of the PEN America/Laura Pels International Foundation Theater Award for a Master Dramatist. He was the inaugural Playwright-in-Residence for six seasons at the Oregon Shakespeare Festival (2013-2019); Playwright's Ensemble at Chicago's Victory Gardens Theatre (2013-2020); Inaugural Latinx Playwrights at the Los Angeles Theatre Center (2021); and Ojai Playwrights Conference member since 2002. His plays include *Electricidad*, *Oedipus El Rey*, *Mojada* and have been seen at regional theatres throughout the United States and Europe. Luis spent two decades in the Los Angeles Poetry and Performance Art communities. He is an Associate Professor at the University of Southern California (USC).

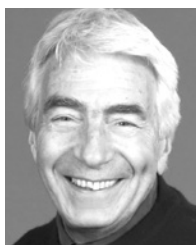


KELLEY KIRKPATRICK (*Associate Artistic Director, he/him/his*) since his arrival at CTG in 2005, Kelley has produced over 100 productions, readings and workshops, many of which have gone on to Broadway, Off-Broadway, and beyond. He has collaborated with celebrated artists including David Henry Hwang, Phylicia Rashad, Ruben Santiago Hudson, Michael Friedman, Culture Clash, Lucas Hnath, Roger Guenveur Smith, Les Waters, Leigh Silverman, Lauren Yee, and Danaï Gurira.



NAUSICA STERGIOU (*General Manager*) has worked supporting artists in theatres of all shapes, sizes, and locales including Center Theatre Group as General Manager and, previously, as Audience Development Director. She oversees productions at the Taper and Douglas, as well as new play commissions and developmental

productions. Nausica has taught Marketing and Management at USC's School of Dramatic Arts and works with local nonprofits including Hollywood Orchard. B.A. Cornell University. M.F.A. Yale School of Drama.



GORDON DAVIDSON (*Founding Artistic Director*) led the Taper throughout its first 38 seasons, guiding over 300 productions to its stage and winning countless awards for himself and the theatre—including the Tony Award for theatrical excellence, Margo Jones Award, The Governor's Award for the Arts, and a Guggenheim fellowship.

The Kentucky Cycle and *Angels in America (Part One)* won the Pulitzer in consecutive years and, in 1994, three of the four plays nominated for the Tony Award for Best Play were from the Taper (*Angels in America* won). In 1989, Gordon took over the Ahmanson and, in 2004, he produced the inaugural season in the Kirk Douglas Theatre.

ADDITIONAL STAFF FOR ALMA

Assistant Director..... Angela Cruz Martinez
 Production Assistant.....Linda Cristal Ureña
 Assistant Costume Designer.....Azucena Dominguez
 Assistant Lighting Designer..... Jacqueline Malenke
 Assistant Sound Designer..... Kayle Khanmohamed
 Carpentry Crew..... Eduardo Baumann, Brian Benson, Edgar Bustillo, Chloe Joy, Shadow LaValley, Abraham Orellana, Randy Pound, Itzul Virgen
 Electrics Crew..... Shannon Barondeau, Ezra Fisher, Sara Nishida, Keannak Parvaz, Keanu Ross-Carbera, Jessica Vad, Nadia Wardlaw-Roberts, Caleb Wildman
 Prop Coordinator..... Angelene Storey
 Scenic Charge..... Marygold Martinez
 Scenic Artist..... Maryjwelle Martinez
 Tailor..... Sustaita Gallegos
 First Hand..... Stephanie Castro



The actors and stage managers employed in this production are members of Actors' Equity Association, the union of professional actors and stage managers in the United States.



The following employees are represented by the International Alliance of Theatrical Stage Employees, Moving Picture Machine Operators, Artists and Allied Crafts of the United States, its Territories and Canada, AFL-CIO, CLC: Stage Crew Local 33; Local Treasurers and Ticket Sellers Local 857; Wardrobe Crew Local 768; Makeup Artists and Hair Stylists Local 706. The scenic, costume, lighting, and sound designers in LORT Theatres are represented by United Scenic Artists, Local USA-829.



The Director and Choreographer are members of the Society of Stage Directors and Choreographers, Inc., an independent national labor union.

Center Theatre Group is a member of the League of Resident Theatres (LORT), the American Arts Alliance, the Broadway League, Independent Producers' Network (IPN), LA Stage Alliance, National Alliance for Musical Theatre (NAMT) and the Theatre Communications Group (TCG).

MEGHAN PRESSMAN Managing Director/CEO | **DOUGLAS C. BAKER*** Producing Director

GORDON DAVIDSON Founding Artistic Director

Center Theatre Group would like to thank its exceptional staff for their ongoing commitment, dedication, and extraordinary efforts.

ARTISTIC

LUIS ALFARO, LINDSAY ALBAUGH*, TYRONE DAVIS,
NEEL KELLER*, KELLEY KIRKPATRICK* ... Associate Artistic Directors
TIFFANY SLAGLE ... Artistic & Literary Administrative Assistant
MATTHEW BOURNE, CASEY NICHOLAW, PHYLCIA RASHAD,
ANNA D. SHAPIRO, PAULA VOGEL ... Associate Artists
D'LO, MIKAAL SULAIMAN ... Sherwood Award Recipients, 2021

EXECUTIVE

CAMILLE SCHENCKAN* ... Deputy Managing Director
LISA D. RICHARDSON ... Manager, Executive Office
ERIC SEPPALA ... Executive Assistant to the Managing Director/CEO

LYNNE GUGENHEIM ... Advancement Strategy, Special Events
& Leadership Consulting
SARAH SCAFDI ... Executive Office Fellow
JACQUELINE CARRILLO ... Theatre Archival Fellow
ROBY JOHNSON ... Theatre Archival Fellow

MANAGEMENT AND ADMINISTRATION

NAUSICA STERGIU* ... General Manager
ERIC SIMS* ... Ahmanson Theatre Presentations Manager
KATIE SOFF* ... Associate General Manager
MEGAN AARON ... Company Manager & Assistant General Manager
JEFFREY UPAH* ... General Management Associate
ADRIENNE KNIGHT ... Assistant Company Manager

EDUCATION AND COMMUNITY PARTNERSHIPS

TRACI KWON* ... Arts Education Initiatives Director
JESUS REYES* ... Community Partnerships Director
NICO ROSARIO ... Creative Workforce Initiatives Director
AURORA ILOG ... Department Manager
COURTNEY CLARK ... Digital Learning Manager
CHRISTINE BREIHAN, RAMY EL-ETREBY, ESTELA GARCIA,
AJA HOUSTON, JOHNATHAN L. JACKSON, MARA PALMA,
DEBRA PIVER*, TARA RICASA, JESSICA VOLPI* ... Teaching Artists

ABIGAIL HARRIS, ADI FAWK, DUOYI "ZOE" WANG,
GILBERT DELEON, JUAN SALAZAR ... Spring 2022 Observers

PRODUCTION

JOE HAMLIN* ... Director of Production
KRISTIN MATSUMOTO ... Production Manager
CHRISTOPHER REARDON ... Production Manager
KATIE CHEN ... Associate Production Manager
BEONICA BULLARD ... Assistant Production Manager
CAMBRIA CHICHI ... Production Coordinator

SHAWN ANDERSON* ... Head Carpenter (Ahmanson Theatre)
SCOTT LUCAS ... Head Properties (Ahmanson Theatre)
ROBERT SMITH* ... Head Sound (Ahmanson Theatre)
SHANE ANDERSON ... Head Flyrail (Ahmanson Theatre)
MICHAEL GARDNER* ... Wardrobe Supervisor (Ahmanson Theatre)
MARY BORGIA ... Hair & Make-up Supervisor (Ahmanson Theatre)
CHRISTINE L. COX* ... House Manager (Ahmanson Theatre)
EMMET KAISER* ... Head Carpenter (Mark Taper Forum)
MARY ROMERO ... Head Properties (Mark Taper Forum)
AARON STAUBACH* ... Head Electrician (Mark Taper Forum)
LINDA WALKER* ... House Manager (Mark Taper Forum)
ADAM PHALEN* ... Head Audio (Kirk Douglas Theatre)
MADELINE SCHUMACHER ... Wardrobe Supervisor
(Kirk Douglas Theatre)

CHAD SMITH* ... Technical Director
CHLOE JOY, BRADLEY WEHRE ... Assistant Technical Director
EDUARDO FERNANDEZ-BAUMANN ... Shop Coordinator
MERRIANNE NEDREBERG* ... Prop Director
KATE REINLIB ... Associate Prop Director
ERIC BABB ... Assistant Prop Director
ANGELENE STOREY ... Prop Coordinator
RASHON WILSON ... Costume Director
WHITNEY OPPENHEIMER ... Costume Shop Manager
CAYLIN DABNEY ... Resident Assistant Costume Designer
ASHPHORD JACOWAY ... Resident Assistant Costume Designer

OPERATIONS

PETER WYLIE ... Operations Manager
MAX OKEN ... Facilities, Health & Safety Manager
NICKI HESKIN ... Temporary COVID Communications Manager
NIKI ARMATO ... Facilities Assistant/
COVID Compliance Officer
JULIO A. CUELLAR* ... Facilities Assistant
JASMINE BRAFF ... Operations Coordinator
CURT GAVIN ... Operations Assistant
NAT PERRY ... Driver
CHASE ANDERSON-SHAW, JILL GALBRAITH, MONICA GREENE,
HENRY KELLY, HEATHER KLINKE, DENISE REYNOSO, LIV SCOTT
... COVID Compliance Officers & Operational Support Staff

FINANCE, INFORMATION TECHNOLOGY, AND HUMAN RESOURCES

CHERYL SHEPHERD ... Chief Financial Officer
SARAH STURDIVANT ... Director of Finance & Technology
SUZANNE BROWN ... Controller
DENICE BEHDAD ... Assistant Controller
ANAHITA ASHRAFIPOUR ... Temporary Senior Accountant
NAKISA ASCHTIANI ... Senior Staff Accountant
XOCHITL ORTEGA ... Accounts Payable Supervisor
KERRY LARICK ... Accounting Assistant
JESSICA HERNANDEZ ... Payroll Manager
JUAN MARTINEZ ... Payroll Specialist
AMBER JACKSON ... Temporary Payroll Assistant

TOM MEGALE ... Director of Business Applications
JANELLE CABRERA TORRES ... Tessitura &
Web Administration Director
JOEY SOLANO ... Digital Product Manager
CHIMA OMEAKU ... Help Desk Support
CRIS SPACCA* ... Tessitura & IT Support

JODY HORWITZ ... Director of Human Resources
MELISSA MCCAFFREY ... Human Resources Generalist
CRISTINA TORRES ... Temporary Human Resources Generalist

MOSS ADAMS ... Auditor
MICHAEL C. DONALDSON, LISA A. CALLIF ... Legal Counsel
GIBSON, DUNN & CRUTCHER ... Legal Counsel

INSTITUTIONAL ADVANCEMENT

TONY JENNISON ... Interim Director of Institutional Advancement
MICHAEL CHAVEZ ... Director of Special Events
ASHLEY TIERNEY ... Director of the Annual Fund & Operations
NIKKI MICHELA ... Associate Director of Institutional Grants
MANDI OR* ... Associate Director of Special Events
SARAH RIDDLE ... Associate Director, Annual Fund & Operations
VANESSA WHEELER ... Associate Director of
Gift Accounting & Research

PRIYA PATEL ... Corporate Relations Officer
KIARA TINCH ... Major Gifts Officer
ELIZABETH DELLORUSSO ... Individual Giving Officer
PAULA MATA LLANA ... Grants Manager
MIKE RATTERMAN ... Telefundraising Manager
OLIVIA BERUMEN ... Donor Stewardship &
Communications Coordinator
JULIA ELISEEVA ... Donor Liaison/Institutional
Advancement Assistant
GRACELYN SWEENEY ... Advancement Operations Assistant
MORGAN THOMAS ... Gift Accounting & Data Analyst
EARL KLASKY ... Individual Giving Assistant
AL BERMAN*, VARTAN MERJANIAN, BENJAMIN SCHWARTZ,
NICOLE SCIPIOPE*, PAUL VITAGLIANO ... Donor Advisors

MARKETING AND GRAPHICS

DEBORAH WARREN ... Director of Marketing
EMYLI GUDMUNDSON ... Marketing Manager
KIYOMI EMI* ... Manager, Audience Development
& Marketing Events
CANDICE WALTERS ... CRM Manager
KATHARINE MEANS ... Marketing Coordinator
CAROLINE THOMPSON/IMPACT 123 ... Media Planning
CAROL HALL/CAROL HALL & ASSOCIATES ... Marketing Consultant
ALLIED GLOBAL MARKETING ... Digital Buyer

DEANNA McCLURE ... Art & Design Director
IRENE T. KANESHIRO* ... Senior Designer
JAVIER VASQUEZ ... Senior Designer-Digital Specialist
TARA NITZ ... Senior Designer
SANDI SILBERT ... Senior Designer

COMMUNICATIONS

JASON MARTIN* ... Head of Publicity
COURTNEY HEIMBUCK ... Publicist
AYU TANAKA ... Communications Associate

TICKET SALES AND SERVICES

SHAWN ROBERTSON* ... Ticket Sales Director
SKYPP CABANAS* ... Senior Manager, Ticket Operations
TINTIN NGUYEN ... Ticketing Operations Coordinator
MICHAEL ZOLDESSY ... Senior Manager, Account Sales
SANDY CZUBIAK* ... Audience & Subscriber Services Director
JENNIFER BAKER*, CHERYL HAWKER* ... Audience Services Supervisors
MICHAEL ESPINOZA ... Audience Services Assistant Supervisor
GARY HOLLAND* ... Audience Services Sales Associate
JESSICA ABROMAVICH, JUSTINE PEREZ* ... Donor Associates
KIMBERLY ARENCIBIA, VICKI BERNDT*, DAVID BETANCOURT,
CLAY BUNKER, FRANK EISENBERGER, JONATHAN FLORES,
DANIEL GARCIA, MICHAEL MUNOZ, FELIPE ROQUE, MICHELLE SOV
CHRISTIAN UNGER ... Audience Services Representatives
DANUTA SIEMAK* ... Subscriber Services Supervisor
CHRISTINA GUTIERREZ* ... Subscriber Services Asst. Supervisor
LIGIA PISTE*, PETER STALOCH* ... Subscriber Services Senior Representatives

SARAH K. GONTA* ... Box Office Treasurer
ANGELICA CARBAJAL*, MICHAEL VALLE* ... 1st Assistant Treasurers
KAITLYN GALVEZ, KEANA JACKSON,
MICHAEL KEMPISTY*, RICHARD RUBIO ... 2nd Assistant Treasurers

SD&A TELESERVICES, INC. ... Outbound Sales Partner

ARTISTIC DEVELOPMENT & COMMISSIONS

As part of our commitment to supporting new plays and playwrights, we foster and develop a broad range of theatrical work from diverse artists locally, nationally, and abroad.

Artists creating new work commissioned by Center Theatre Group this season:

STEVE CUIFFO	LISA KRON	LYNN NOTTAGE
LISA D'AMOUR	KIMBER LEE	MARCO RAMIREZ
LARISSA FASTHORSE	YOUNG JEAN LEE	SARAH RUHL
JENNIFER HALEY	ANTHONY LOPEZ	LUIS VALDEZ
ALESHEA HARRIS	JANNE NABERS	PAULA VOGEL
RAJIV JOSEPH	QUI NGUYEN	KAREN ZACARIAS

Since 2005, we have invited local playwrights to spend a year researching and writing a new work with the feedback of their fellow writers and artistic staff as part of our **L.A. Writers' Workshop**. Our growing community currently contains more than 100 playwrights. 2021/22 Season members:

JAMI BRANDLI	JULIE TAIWO ONI	PIA SHAH
JUNE CARRYL	LISA RAMIREZ	JUDY SOO HOO
JESSICA KO	TISHA MARIE	DELANWA STUDI
PENELOPE LOWDER	REICHLIE-AGUILERA	

Learn more at [CTGLA.org/Artists](https://www.ctgla.org/artists).