

AHMANSON THEATRE | 2021/22 SEASON

FIFTH SEASON PRODUCTION | **NOW ON STAGE**



FIRST SEASON PRODUCTION

An Old Vic Production of

A CHRISTMAS CAROL

Adapted by Jack Thorne

Directed by Thomas Caruso

Production Originally Conceived and

Directed by Matthew Warchus

NOVEMBER 30 – DECEMBER 15, 2021

SECOND SEASON PRODUCTION

EVERYBODY'S TALKING ABOUT JAMIE

Music by Dan Gillespie Sells

Book and Lyrics by Tom MacRae

From an Idea by Jonathan Butterell

Directed by Jonathan Butterell

JANUARY 16 – FEBRUARY 20, 2022

THIRD SEASON PRODUCTION

The National Theatre and

Neal Street Productions present

THE LEHMAN TRILOGY

by Stefano Massini

Adapted by Ben Power

Directed by Sam Mendes

MARCH 3 – APRIL 10, 2022

FOURTH SEASON PRODUCTION

HADESTOWN

Music, Lyrics, & Book by Anaïs Mitchell

Developed With and Directed by Rachel Chavkin

APRIL 26 – MAY 29, 2022

BONUS PRODUCTION

COME FROM AWAY

Book, Music, and Lyrics by
Irene Sankoff and David Hein

Musical Staging by Kelly Devine

Directed by Christopher Ashley

MAY 31 – JUNE 12, 2022

SIXTH SEASON PRODUCTION

THE PROM

Book by Bob Martin and Chad Beguelin

Music by Matthew Sklar

Lyrics by Chad Beguelin

Directed and Choreographed by Casey Nicholaw

AUGUST 9 – SEPTEMBER 11, 2022

SEVENTH SEASON PRODUCTION

Rodgers & Hammerstein's

OKLAHOMA!

Music by Richard Rodgers

Book and Lyrics by Oscar Hammerstein

Based on the play *Green Grow the Lilacs*
by Lynn Riggs

Choreography by John Heginbotham

Original Choreography by Agnes De Mille

Directed by Daniel Fish

SEPTEMBER 13 – OCTOBER 16, 2022



Season Sponsor



Official Card of
Center Theatre Group



**CENTER
THEATRE
GROUP**



friend.
insider.
visionary.

you!

**YOUR MEMBERSHIP EXPERIENCE
AT CENTER THEATRE GROUP**

Live theatre is finally back—all thanks to generous theatre-lovers like you who made it possible.

As a nonprofit organization, Center Theatre Group relies on the generosity of our supporters. Become a member with a tax-deductible contribution of \$100—or just \$10 per month—and make a vital difference for our future following the most challenging period in Center Theatre Group's history. Plus, your gift will unlock membership benefits to enhance your theatregoing experience, from priority ticket access to members-only events and more!

Learn more at CTGLA.org/membership

QUESTIONS?

Call our Membership Concierge at **213.972.7564** or email membership@CTGLA.org

friends

Friends get first access to tickets before the general public plus invitations to members-only events, including tours and rehearsals. *Join today with a gift of \$100 or more—or just \$10 per month.*

insiders

Insiders enjoy a year-round VIP experience with access to the best seats for our shows, concierge service for house seats at New York and London productions, and special behind-the-scenes events. *Join today with a gift of \$2,500 or more.*

visionaries

Visionaries have the ultimate access to our artists, shows, programs, and staff, with premium seating for our productions, including use of The Founders' Room at the Ahmanson, and invitations to private salon-style artist events. *Join today with a gift of \$15,000 or more.*

**CENTER
THEATRE
GROUP**

Stacey Mindich

Mickey Liddell Hunter Arnold Caiola Productions Double Gemini Productions
Fakston Productions Roy Furman Harris Karma Productions
On Your Marks Group Darren Bagert Berind Productions
Bob Boyett Colin Callender Caitlin Clements Freddy DeMann Dante Di Loreto
Bonnie & Kenneth Feld FickStern Productions Eric & Marsi Gardiner Robert Greenblatt
Jeremiah J. Harris and Darren P. DeVerna John Gore Organization Mike Kriak
David Mirvish Eva Price Zeilinger Productions Adam Zotovich Ambassador Theatre Group
Independent Presenters Network AND The Shubert Organization

EXECUTIVE PRODUCERS
Wendy Orshan and Jeffrey M. Wilson

IN ASSOCIATION WITH
Arena Stage Second Stage Theater
Molly Smith, Edgar Dobie Carole Rothman, Khady Kamara

DEAR EVAN HANSEN

BOOK BY **STEVEN LEVENSON** MUSIC AND LYRICS BY **BENJ PASEK & JUSTIN PAUL**

ANTHONY NORMAN
ALAINA ANDERSON COLEEN SEXTON
LILI THOMAS NIKHIL SABOO JOHN HEMPHILL
PABLO DAVID LAUCERICA MICAELA LAMAS JEFFREY CORNELIUS

SCENIC DESIGN BY **DAVID KORINS** PROJECTION DESIGN BY **PETER NIGRINI** COSTUME DESIGN BY **EMILY REBHOLZ** LIGHTING DESIGN BY **JAPHY WEIDEMAN** SOUND DESIGN BY **NEVIN STEINBERG**

HAIR DESIGN BY **DAVID BRIAN BROWN** ASSOCIATE MUSIC SUPERVISOR **BEN COHN** MUSIC DIRECTOR **GARRET HEALEY** MUSIC COORDINATORS **MICHAEL KELLER** **MICHAEL AARONS** VOCAL ARRANGEMENTS & ADDITIONAL ARRANGEMENTS BY **JUSTIN PAUL**

MARKETING AND PUBLICITY DIRECTION **BOND THEATRICAL** TOUR BOOKING AGENCY **THE BOOKING GROUP** ADVERTISING & MARKETING **SERINO COYNE** NATIONAL PRESS REPRESENTATIVES **GRAPEVINE PR** SOCIAL MEDIA **MARATHON DIGITAL**
DJ MARTIN MEREDITH BLAIR KARA GEBHART

CASTING BY **TARA RUBIN CASTING** PRODUCTION MANAGEMENT **JUNIPER STREET PRODUCTIONS** PRODUCTION SUPERVISOR **JUDITH SCHOENFELD** PRODUCTION STAGE MANAGER **JOVON E. SHUCK** COMPANY MANAGER **DEANN L. BOISE**
KEVIN METZGER-TIMSON

SENIOR ASSOCIATE CHOREOGRAPHER **MARK MYARS** SENIOR ASSOCIATE DIRECTOR **DANNY SHARRON** ASSOCIATE DIRECTORS **TREY ELLETT** **CANDIS C. JONES** ASSOCIATE CHOREOGRAPHERS **JENNIFER RIAS** **JONATHAN WARREN** GENERAL MANAGER **101 PRODUCTIONS, LTD.**

MUSIC SUPERVISION, ORCHESTRATIONS
& ADDITIONAL ARRANGEMENTS BY
ALEX LACAMOIRE

CHOREOGRAPHY BY
DANNY MEFFORD

DIRECTED BY
MICHAEL GREIF

Originally presented by Arena Stage – July 9, 2015 to August 23, 2015
New York premiere at Second Stage – March 26, 2016 to May 29, 2016

Original Cast Recording Available on Atlantic Records.

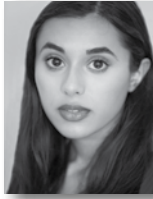


JUNE 29 – JULY 31, 2022 **AHMANSON THEATRE**

CAST



**ANTHONY
NORMAN**



**ALAINA
ANDERSON**



**COLEEN
SEXTON**



**LILI
THOMAS**



**NIKHIL
SABOO**



**JOHN
HEMPHILL**



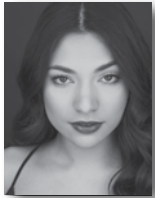
**PABLO DAVID
LAUCERICA**



**MICAELA
LAMAS**



**JEFFREY
CORNELIUS**



**VALERIA
CEBALLOS**



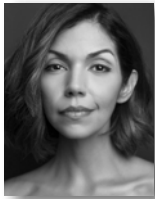
**IAN
COURSEY**



**REESE
SEBASTIAN
DIAZ**



**GILLIAN
JACKSON HAN**



**ISABEL
SANTIAGO**



**DANIEL ROBERT
SULLIVAN**



**KELSEY
VENTER**



**PIERCE
WHEELER**

Please turn off all electronic devices such as cellular phones and watch alarms. The use of any recording device, either audio or video, and the taking of photographs, with or without flash, is strictly prohibited.

CAST

(listed in alphabetical order)

Zoe Murphy ALAINA ANDERSON
Larry Murphy JOHN HEMPHILL
Alana Beck MICAELA LAMAS
Jared Kleinman PABLO DAVID LAUCERICA
Evan Hansen ANTHONY NORMAN
(Saturday mat. and Sunday eve. performances) JEFFREY CORNELIUS
Connor Murphy NIKHIL SABOO
Heidi Hansen COLEEN SEXTON
Cynthia Murphy LILI THOMAS

VIRTUAL COMMUNITY VOICES

BECCA AYERS, MARY BACON, GERARD CANONICO, JENN COLELLA,
ADAM HALPIN, MYKAL KILGORE, STEPHEN KUNKEN, TAMIKA LAWRENCE,
CARRIE MANOLAKOS, KEN MARKS, ASA SOMERS, JASON TAM,
BRENDA WEHLE, NATALIE WEISS, TIM YOUNG, REMY ZAKEN

UNDERSTUDIES

Standbys and understudies never substitute for players
unless a specific announcement for the appearance is made at the time of the performance.

Understudy for Evan Hansen, Connor Murphy, Jared Kleinman: REESE SEBASTIAN DIAZ;
Understudy for Evan Hansen, Jared Kleinman: JEFFREY CORNELIUS, PIERCE WHEELER;
Understudy for Jared Kleinman, Connor Murphy: IAN COURSEY; Understudy for Heidi Hansen, Cynthia Murphy: ISABEL SANTIAGO, KELSEY VENTER; Understudy for Alana Beck, Zoe Murphy: VALERIA CEBALLOS, GILLIAN JACKSON HAN; Understudy for Larry Murphy: DANIEL ROBERT SULLIVAN.

Dance Captain: Kelsey Venter

DEAR EVAN HANSEN

WILL BE PERFORMED WITH ONE 15-MINUTE INTERMISSION



VIRTUAL STAGE DOOR

While we might not be able to meet you in person after the show, you still can bring the post-show experience home.

Scan the QR code to upload your photo and add yourself to a custom-made, autographed mosaic featuring the entire cast. Afterwards, you can download and share your own special mosaic.

It's virtually that easy!

Latecomers will be seated at the discretion of management. Patrons with disabilities: wheelchair seating is available in a variety of theatre locations. When ordering tickets, please indicate any special needs. For our hearing-impaired guests, the theatre is equipped with listening devices; please contact an usher for assistance.

MUSICAL NUMBERS

ACT ONE

"Anybody Have a Map?"	Heidi, Cynthia
"Waving Through a Window"	Evan, Company
"For Forever"	Evan
"Sincerely, Me"	Connor, Evan, Jared
"Requiem"	Zoe, Larry, Cynthia
"If I Could Tell Her"	Evan, Zoe
"Disappear"	Connor, Evan, Alana, Jared, Cynthia, Larry, Zoe
"You Will Be Found"	Evan, Company

ACT TWO

"Sincerely, Me" (Reprise)	Connor, Jared
"To Break in a Glove"	Larry, Evan
"Only Us"	Zoe, Evan
"Good for You"	Heidi, Alana, Jared, Evan
"You Will Be Found" (Reprise)	Company
"Words Fail"	Evan
"So Big/So Small"	Heidi
"Finale"	Company

MUSICIANS

Music Director/Conductor/Keyboard: GARRET HEALEY
Associate Conductor: MICHAEL USELMANN
Guitar: MATT BROWN, ERIC STOCKTON;
Drums: RYAN McCAUSLAND; Bass: LEON BOYKINS;
Violin/Concertmaster: MONA TIAN; Viola: NIKKI SHORTS; Cello: DAVID MERGEN
Contractor: ROBERT PAYNE

Additional Orchestrations: Christopher Jahnke
Keyboard Programmer: Randy Cohen
Associate Keyboard Programmer: Jeremy King
Ableton Programmers: Enrico de Trizio, Scott Wasserman
Music Copying: Emily Grishman Music Preparation

Please be aware that a camera flash effect will be in use at this performance.

WHO'S WHO

ANTHONY NORMAN (*Evan Hansen*). Honored and beyond grateful to be here. Multi-instrumentalist from Chicago. Broadway: *The Prom* (OBC); National Tour: *Newsies*; TV/Film: *Mare of Easttown*, *Chicago Med*, *Newsies Live*, *Dropping* (upcoming); Selected Regional: Marcus in *Murder for Two* (FLMTF). Thanks to Richard Lissemore for showing me the way, Melissa Cross, Steve, Randi, Cady Huffman, and Scott Weinstein. Thanks to the *DEH* team for welcoming me with such open arms. To Stacey, Danny, and Ben for believing in me. To Mom and Dad for your unwavering support. To stream my upcoming EP and future announcements, check out anthonyjnorman.com or follow @a_norms on Instagram.

ALAINA ANDERSON (*Zoe Murphy*) is elated to be making her professional debut! Proud alum of Yale University, B.A. Cognitive Science. Previous roles include Aldonza (*Man of La Mancha*), Wendla (*Spring Awakening*), Cinderella (*Into The Woods*), and Nina (*In The Heights*). Love and gratitude to the wonderful family, friends, and mentors who have supported her, as well as Tara Rubin, Xavier Rubiano, Stacey Mindich, and the entire *DEH* team. IG/Twitter: @laineanderson. TikTok: @alainymous. alainanicoleanderson.com

COLEEN SEXTON (*Heidi Hansen*) starred on Broadway as Lucy when she was 20 years old in *Jekyll and Hyde*, as well as the TV version *Jekyll and Hyde: Direct from Broadway* opposite David Hasselhoff. National Tours: *Wicked* (Elphaba); *Legally Blonde* (Brooke Wyndham); *Chicago* (June/Go-To-Hell Kitty/US Mama Morton). Regional: *Mamma Mia!* (Donna); *Spamalot* (Lady of The Lake); *End of the Rainbow* (Judy Garland). Sending lots of love and thanks to the *DEH*/Tara Rubin teams and her Ma! @colsex79

LILI THOMAS (*Cynthia Murphy*) is overjoyed to join *DEH!* Recently in Dave Malloy's pre-Broadway run of *Octet*. Off-Broadway: *We're Gonna Die* (2nd Stage), *The Hello Girls*, *Only Human*. Select Regional: Kennedy Center, Lincoln Center, Berkeley Rep, Milwaukee Rep, The Rev. B.F.A. NYU/Tisch. BIG thanks to Kevin & TRC, Matt & Kat at DGRW, and my loves, Annabelle & Jack, for letting Mommy make and find her own map! Endless gratitude to Mom... this is for you. @thelilithomaslili-thomas.com

NIKHIL SABOO (*Connor Murphy*) is elated to join the tour of *DEH*—aligning in his purpose of creating space, opening other's perspectives, and lifting up all aspiring South Asian artists across the country. Prior, Nikhil was on tour with the Angelica Company of *Hamilton* and in the original Broadway cast of *Mean Girls*. Gratitude to Stewart Talent, the *DEH* company, and my tribe. Love to Mom, Dad, and Nisha. For Dada and Ama. @nikhil.saboo

JOHN HEMPHILL (*Larry Murphy*) starred on Broadway as Sam/Bill in *Mamma Mia!*, and the original Broadway company of Andrew Lloyd Webber's *School of Rock*. First National Tour of *The Curious Incident of the Dog in the Night-Time*. Film: *Zodiac* directed by Academy Award nominated David Fincher. TV: *Castle*, *Monk*, *Las Vegas*, *The Black List*, *Mr. Robot*, *Big Love* among others. Hi to my students at Stephens College! John is ever grateful to wife Jenn. @johnhemphill

PABLO DAVID LAUCERICA (*Jared Kleinman*) is PUMPED to be joining the *DEH* fam! A Miami-born Cuban-American, he recently graduated from Northwestern University, specializing in vocal performance and musical theatre. His main artistic interests include acting, songwriting, music production, and content creation. Find his music content on TikTok/Instagram, @pablodlaucERICA! Special thanks to Stewart Talent, Stacey Mindich, Tara Rubin, Xavier Rubiano, and the entire *DEH* team. Lots of love to Mami, Papi, Kaki, and the Primelles for their constant support.

MICAELA LAMAS (*Alana Beck*). She/Her. Micaela is thrilled to join the *DEH* fam! She's a recent grad of the Texas State University B.F.A. Musical Theatre program (go bobcats!) and a Texas native. All the love & thanks to CGF, the *DEH* team, Tara Rubin Casting, and every teacher along the way. Love to her friends, family, and especially mom & her grandparents. Love you always.

JEFFREY CORNELIUS (*Alternate Evan Hansen*; *u/s Jared Kleinman*) He/him. Jeffrey is ecstatic to be making his national tour debut in *Dear Evan Hansen!* Jackson MS Native and Current Student at CCM. LINK: Class 4, *Homeschool Musical: Class of 2020* on HBO Max. Favorite shows include *Pippin* (CCM), *Once* (CCM). Huge Thank You to Mommy, Daddy, Daniel, Granny, Grandpa, Nana, PawPaw, Uncle John, TT, Kevin, and EVERY SINGLE teacher and mentor who helped me get to this point. It takes a village. @thejeffreycornelius on Instagram.

VALERIA CEBALLOS (*u/s Zoe Murphy*; *Alana Beck*) She/Her. Valeria is thrilled to be making her Broadway National Tour debut! She is endlessly grateful to the team at Tara Rubin, the *DEH* creative team, The Mine, her family, and her Jesse for supporting this little Latina's big dreams. @valeriaceballos

IAN COURSEY (*u/s Connor Murphy*; *Jared Kleinman*) recently finished his sophomore year at the University of Michigan. At Michigan, he is proud to have played the roles of Eddie Birdlace (*Dogfight*), and George Berger (*Hair*). Ian is thrilled to be a part of this beautiful show and would like to thank his family, friends, professors, Rolando Sanz, the *DEH* team, Danny and Haley. Go Blue!

REESE SEBASTIAN DIAZ (*u/s Evan Hansen, Connor Murphy, Jared Kleinman*). (He/Him) Reese is overjoyed to join the *DEH* family! Broadway: *Mary Poppins*. National Tours: *Mary Poppins, Beauty and the Beast*. Special thanks to the *DEH*/Tara Rubin teams. Much love to Mom, Dad, Nana, Sam, Frank, Roni, Warren, family, friends, and teachers. @ReeseSDiaz

GILLIAN JACKSON HAN (*u/s Zoe Murphy, Alana Beck*) is over the moon to be making her national tour debut in *Dear Evan Hansen*! She is a proud member of the AAPI/multiracial community and is filled with gratitude for the actors whose work made her own career possible. BWMT. Thanks to family, chosen and biological, her mentors, the Tara Rubin team, CTG, A, and her parents. Always for J. Twitter, Instagram, TikTok: @with_a_gee

ISABEL SANTIAGO (*u/s Heidi Hansen, Cynthia Murphy*) Select Movie/TV: *Blue Bloods, The Late Show with Stephen Colbert, In The Heights*, and *Martin Eden*. Off-Broadway: *First Daughter Suite, GIANT*. National Tour: *In The Heights*. Concert: *PBS' Great Performances: Bernstein's MASS, The Chicago Symphony Orchestra*, and *The Philadelphia Orchestra*. For Adam Swope. @mynameIsabel

DANIEL ROBERT SULLIVAN (*u/s Larry Murphy*) performed as Tommy DeVito in *Jersey Boys* more than 1,000 times with the Las Vegas, Toronto, and touring companies, and in the national tour of *Motown the Musical*. He's the author of *Prospect High: Brooklyn, Braving the Bronx River, Becoming A Jersey Boy*, and *There's No Substitute for Empathy*.

KELSEY VENTER (*u/s Heidi Hansen, Cynthia Murphy*). National Tour: *Dear Evan Hansen*. Selected Regional: Guthrie Theater, American Conservatory Theater, The Old Globe Theater. B.A. in Theater SDSU, MFA American Conservatory Theater. All love and gratitude to my incredible family, friends, and mentors for believing in me. kelseyventer.com

PIERCE WHEELER (*u/s Evan Hansen, Jared Kleinman*). He/Him. Pierce is so excited to make his professional debut with the *DEH* family. After studying for a year at NYU Tisch, he is thankful to travel the country and tell this beautiful story. Special thanks to family, friends, and teachers. @pierce_wheeler

STEVEN LEVENSON (Book) is a Tony Award-winning playwright, screenwriter, and television writer and producer. His plays include *If I Forget, Core Values, Seven Minutes in Heaven*, and *The Language of Trees*. He co-created and executive produced the FX series *Fosse/Verdon*, which was nominated for seventeen Emmy Awards, including Best Limited Series and Best Writing for a Limited Series, as well as for Critics' Choice Association and Producers Guild Awards, and won the Writers Guild Award and an AFI Award for Outstanding Series. Other honors include the Obie Award, two Outer Critics Circle Awards, and the John Gassner Memorial Playwriting Award. Film projects include the adaptation of Jonathan Larson's

Tick, Tick...Boom!, directed by Lin-Manuel Miranda, for Netflix. He is a graduate of Brown University.

BENJ PASEK & JUSTIN PAUL (*Music and Lyrics*). Oscar, Grammy, Tony, and Olivier Award-winning songwriters Benj Pasek & Justin Paul are best known for their work on *Dear Evan Hansen, La La Land*, and *The Greatest Showman*. Their accompanying albums for each project have appeared in the top 10 of the Billboard 200, the latter of which certified Platinum in over a dozen countries, including Triple Platinum in the U.S., New Zealand, China, Taiwan, and Indonesia, Quadruple Platinum in the Philippines, Hong Kong, and Australia, 6x Platinum in Singapore, 7x Platinum in the U.K., 9x Platinum in Ireland, and 10x Platinum in Korea. Other credits: Broadway - *A Christmas Story, The Musical*; Off-Broadway/Regional - *Dogfight, James and the Giant Peach, Edges*; Film: *Aladdin, Trolls*; Television: *Smash, The Flash*, and *A Christmas Story, Live!* With the release of the novelization of *Dear Evan Hansen*, Benj and Justin became New York Times Best-Selling Authors. Upcoming film projects include Disney's live-action *Snow White*, Sony's live-action hybrid musical *Lyle, Lyle, Crocodile*, and an original live-action musical with Apple.

MICHAEL GREIF (*Director*) received his fourth Tony nomination and a Helen Hayes Award for his work on *Dear Evan Hansen*. Other Broadway credits: *Rent, Grey Gardens, Next to Normal, Never Gonna Dance, If/Then, War Paint*. Recent work includes *Make Believe* (Second Stage; New York Times Best of 2019), *Man in the Ring* (Huntington Stage; Norton Award for Best Production), *Our Lady of Kibeho* and *Angels in America* (NY's Signature Theatre); *The Low Road* and *The Intelligent Homosexual's Guide...* (The Public); and *The Tempest, The Winter's Tale* and *Romeo and Juliet* at The Public's Delacorte Theater. Off-Broadway, he's received Obie Awards for *Machinal, Dogeaters* (The Public) and *Rent* (NYTW), and has directed new plays and musicals at Playwrights Horizons, Roundabout, MTC, MCC, New York Theatre Workshop, and at Second Stage, where he directed *Next to Normal* and *Dear Evan Hansen*. Regional work includes premieres and revivals at Williamstown Theatre Festival, La Jolla Playhouse, Arena Stage, Center Stage, Mark Taper Forum, Dallas Theater Center and Trinity Repertory Company. Mr. Greif holds a B.S. from Northwestern University and an M.F.A. from the University of California, San Diego.

DANNY MEFFORD (*Choreographer*). Danny has choreographed two Best Musical Tony winners: *Fun Home* and *Dear Evan Hansen*. His other Broadway credits are *The Bridges of Madison County* and *Bloody Bloody Andrew Jackson*. For television, he staged the theatrical sequences for *Rise* on NBC and made dances for *Dickinson* on Apple TV+. Other favorite credits include *Good Person of Szechwan* starring Taylor Mac, *Love's Labour's Lost* and *Much Ado About Nothing* in Central Park, an international tour of *The Sound of Music* and the Off-Broadway musical *Miss You Like Hell*. He has been nominated for Drama Desk, Lortel, and Astaire awards. M.F.A. from Brown University, B.S. from the University of Evansville.

ALEX LACAMOIRE (*Music Supervisor/Orchestrator*) is a four-time Grammy, three-time Tony, and Emmy winner, for his work on *Dear Evan Hansen*, *Hamilton*, *In the Heights* and FX's *Fosse/Verdon*. Some of his credits as music director, arranger and/or orchestrator include *Message in a Bottle* (London), *Annie* (2011 Broadway revival), *9 to 5* (Drama Desk and Grammy noms), *Legally Blonde*, and *Wicked*. Recent film/TV credits include composing for Netflix's *Vivo* and serving as Executive Music Producer on the film *Tick, Tick...Boom!* Love to Mom, Dad, Lil Sis, and his wife, Ileana.

DAVID KORINS (*Scenic Design*). Broadway: *Mrs. Doubtfire*, *Beetlejuice* (Tony nom.), *Hamilton* (Tony nom.), *Dear Evan Hansen*, *War Paint* (Tony nom.), *Bandstand*, *Misery*, *Motown: The Musical*, *Vanya and Sonia...*, *Annie*, *Bring It On*, *Godspell*, *The Pee-wee Herman Show*, *Lombardi*, *Passing Strange* and *Bridge & Tunnel*. TV: *91st Academy Awards* (Emmy nom.), *Grease: Live!* (Emmy winner). Concert: Bruno Mars, Lady Gaga, Kanye West, Sia, Mariah Carey, Andrea Bocelli. Dad: Stella & Vivian.

PETER NIGRINI (*Projection Design*) is one of Broadway's pioneering projection designers. His work includes *MJ, The Musical*; *Ain't Too Proud*; *Beetlejuice*; *The SpongeBob Musical*; *A Doll's House, Part 2*; and *Fela!* He also has designed extensively in other venues and forms including *Here Lies Love* and *Grounded* at the Public Theater; *Lucia di Lammermoor* and *Don Giovanni* for Santa Fe Opera; *The Grace Jones Hurricane Tour*, *Blind Date*, and *Deep Blue Sea* for Bill T. Jones and the Park Avenue Armory, and *Real Enemies* with Darcy James Argue and *Secrete Society* at BAM. He was also a founding member of Nature Theater of Oklahoma.

EMILY REBHOLZ (*Costume Design*). Broadway: *Jagged Little Pill* (Tony Nomination); *Frankie and Johnny*; *Gettin' the Band Back Together*; *Indecent*; *Oh, Hello on Broadway*; *If/Then*; *Vanya and Sonia and Masha and Spike*; *Bloody Bloody Andrew Jackson*. Select Recent: *Nantucket Sleigh Ride* (LCT) *Jagged Little Pill* (A.R.T.), *The Low Road* (The Public Theater: Henry Hewes Award, Lucille Lortel Nomination), *The Winter's Tale* (TFNA), *Mary Jane* (NYTW), *Twelfth Night* (CSC), *Brigadoon* (Encores!), *The Robber Bridegroom* (Roundabout), *Lucia Di Lammermoor*, and *Don Giovanni* (Santa Fe Opera). *Orfeo ed Euridice* (Opera Theatre of St. Louis) M.F.A.: Yale University

JAPHY WEIDEMAN (*Lighting Design*). Broadway: *Lobby Her*, *Charlie and the Chocolate Factory*, *Significant Other*, *Bright Star*, *Dear Evan Hansen* (Tony nom.), *The Visit* (Tony nom.), *Airline Highway* (Tony nom.), *The Nance* (Tony nom.), *Of Mice and Men* (Tony nom.), *Sylvia*, *Old Times*, *The Heidi Chronicles*, *Macbeth*, *Cyrano de Bergerac*, *The Snow Geese*. Off-Broadway: Lincoln Center Theater, NYTW, The Public (Shakespeare in the Park), Second Stage, Playwrights Horizons, MTC, MCC, LABYrinth, Vineyard, others. West End: *Dear Evan Hansen* (Noel Coward), *A Nice Fish* (Harold Pinter Theatre), *Blackbird* (Albery Theatre).

NEVIN STEINBERG (*Sound Design*). Broadway: *Tina - The Tina Turner Musical* (Tony nomination), *Hadestown* (Tony Award), *Hamilton*, *Dear Evan Hansen*, *Freestyle Love Supreme*, *The Cher Show*, *Bandstand*, *Bright Star*, *It Shoulda Been You*, *Mothers and Sons*, *Rodgers & Hammerstein's Cinderella* (Tony nomination). Over 30 Broadway productions with Acme Sound Partners and five additional Tony nominations: *The Gershwins' Porgy and Bess*, *Bengal Tiger at the Baghdad Zoo*, *Fences*, *Hair*, *In the Heights*.

DAVID BRIAN BROWN (*Hair Design*). Broadway Highlights: *Mrs. Doubtfire*, *Moulin Rouge!*, *Frozen*, *War Paint* (Drama Desk Award), *She Loves Me*, *Curious Incident...*, *Gigi*, *The Bridges of Madison County*, *If/Then*, *Macbeth*, *Death of a Salesman*, *Follies*, *Sister Act*, *A Steady Rain*, *Shrek*, *The Little Mermaid*, *Legally Blonde*, *Spamalot*, *Tarzan*, *Nine*, *Gypsy*, *Sweet Smell of Success*, *The Invention of Love*, *Aida*, *The Iceman Cometh*, *Chicago*, *Side Show*, *Steel Pier*. Film Credits: *Peter Pan Live!* (NBC), *The Sound of Music Live!* (NBC), *It's Complicated*, *Angels in America* (Emmy-nominated), *Too Wong Foo...*

JENNIFER LORD (*Natural Hair Consultant*) is an award-winning hair stylist determined to change the perception of natural hair. Along with her commitment to social justice, she's worked behind the curtain of some of the country's most exclusive runway shows during New York Fashion Week and recently styled for The Met Gala, 2021. Jennifer entered the theatre industry in 2019 and is now educating hair stylists in theatre, film, and television on the historical components of natural hair.

BEN COHN (*Associate Music Supervisor*). Broadway: *Wicked* (assistant conductor), *The Woman in White*, ...*Spelling Bee*, *Wonderful Town*, *In My Life*. Pre-Broadway: *The Book of Mormon*, *9 to 5*, *Anastasia*, *Finding Neverland*. MD for Clay Aiken, Lin-Manuel Miranda's *21 Chump Street*, Stephanie J. Block, BCEFA. Ben's arrangements have been heard on TV, albums, concerts, theme parks, and cruise lines. Ithaca and NYU grad. Love to Sean and Allister.

GARRET HEALEY (*Music Director*) is thrilled to be taking over as music director after spending a year touring with the show as the associate conductor. Before *Dear Evan Hansen*, Garret toured with *Kinky Boots* as associate music director and worked as a showband musician with Carnival Cruise Lines. Many thanks to Ben, Alex, and Michael and much love to Mom, Dad, Evan, and Jack!

MICHAEL KELLER & MICHAEL AARONS (*Music Coordinators*). Broadway: *Moulin Rouge!*, *Hamilton*, *Jagged Little Pill*, *Dear Evan Hansen*, *Lion King*, *Wicked*, *The Book of Mormon*, *Freestyle Love Supreme*, *Diana*. Upcoming: *Annie Live*, *Flying Over Sunset*. Tours: *Pretty Woman*, *Hamilton*, *Frozen*, *Dear Evan Hansen*.

TARA RUBIN CASTING (*Casting*). Selected Broadway and National Tours: *Six, Sing Street, Ain't Too Proud, King Kong, The Band's Visit, Prince of Broadway, Sunset Boulevard, Miss Saigon, Dear Evan Hansen, Cats, Falsettos, School of Rock, Bullets Over Broadway, Les Misérables, Big Fish, Billy Elliot, Shrek, Spamalot, ...Spelling Bee, The Producers, Mamma Mia!, Jersey Boys, The Phantom of the Opera*. Selected Off-Broadway: *Trevor, Between the Lines, Clueless, Gloria: A Life, Smokey Joe's Café, Here Lies Love*. Film: *Here Today*.

BOND THEATRICAL (*Marketing & Publicity Direction*) is an independently-owned booking, marketing and publicity company for live entertainment productions. Current marketing, and publicity shows include *1776, Anastasia, Dear Evan Hansen, Diana, Escape to Margaritaville, Fiddler on the Roof, Jagged Little Pill, Moulin Rouge! The Musical, Rodgers & Hammerstein's Oklahoma!, The Band's Visit, The Phantom of the Opera* on Broadway, *The Prom, and Tina: The Tina Turner Musical*. Current tour marketing and booking shows include *9 to 5: The Musical, A Soldier's Play, An Officer and a Gentleman, Annie, Blue Man Group, CATS, Clue, Clueless, Company, Diana, Dr. Seuss' How The Grinch Stole Christmas! The Musical, Dick Clark's American Bandstand Rockin' On, Girl from the North Country, Jesus Christ Superstar, Kathleen Turner: Finding My Voice, Lempicka, Love Actually Live, The Lehman Trilogy, May We All, Spamilton, The Brat Pack, and What the Constitution Means to Me*.

THE BOOKING GROUP (*Tour Booking Agency*). Since its inception in 1996, The Booking Group has represented 26 Tony Award-winning Best Musicals and Plays. Current touring productions include *Anastasia, Come From Away, Dear Evan Hansen, Fiddler on the Roof, Hometown, Hairspray, Hamilton, Mean Girls, My Fair Lady, Pretty Woman, Rent: The 20th Anniversary Tour, To Kill A Mockingbird, Tootsie, and Waitress*. Future productions include *1776; Chicago, the 25th Anniversary Tour; Little Shop of Horrors; Mamma Mia; MJ; Mrs. Doubtfire; Sing Street; Six; The Book of Mormon; Tina, and West Side Story*.

JUDITH SCHOENFELD (*Production Supervisor*). Broadway: *If/Then, Next to Normal, Grey Gardens*. Also many other productions Off-Broadway and regionally, including *Dear Evan Hansen* at Second Stage Theatre and Arena Stage. She is happy to be a part of the *Dear Evan Hansen* family again.

JOVON E. SHUCK (*Production Stage Manager*) (he/him) is a proud graduate of Michigan State University. His credits include the National Tours of *Miss Saigon, Waitress, Hedwig and the Angry Inch, The Phantom of the Opera, Disney's The Lion King, and Monty Python's Spamalot*. Much love to Sheila Marie, always.

STACY N. TAYLOR (*Stage Manager*) is a proud graduate of the SM program at the University of Cincinnati - College - Conservatory of Music (CCM). Touring Credits: *Spring*

Awakening, South Pacific, Beauty and the Beast, Annie, Bodyguard, Waitress, School of Rock, and Jersey Boys. Other credits include Weston Playhouse, *Blue Man Group* – Orlando.

KATELYNN COOPER (*Assistant Stage Manager*) Broadway: *Matilda, Dear Evan Hansen, Amazing Grace*. Tours: *My Fair Lady, School of Rock*. Off-Broadway: *Jersey Boys, Clinton: The Musical*. Television: *Peter Pan Live!*. Regional: MTC, Playwrights Horizons, Asolo Repertory, Huntington Theatre, and Williamstown. B.F.A. Stage Management, Emerson College.

JUNIPER STREET PRODUCTIONS (*Production Manager*) is Hillary Blanken, Ana Rose Greene, Sadie Alisa, Guy Kwan, Victoria Bullard, Ross Leonard, Christopher Batstone, and Hannah Wilson. JSP has helped create over 100 productions and is thrilled to be back on Broadway! JSP is proud to be a member of the *Dear Evan Hansen* family on Broadway and touring. Current and upcoming shows include *Beautiful, Come From Away, Diana, The Musical, Funny Girl, Harry Potter and the Cursed Child, MJ The Musical, Moulin Rouge!, Mr. Saturday Night, Slave Play, Thoughts of a Colored Man, Tina - the Tina Turner Musical, Waitress*. juniperstreet.com

DANNY SHARRON (*Senior Associate Director*) is a Brooklyn-based director of new plays/musicals, committed to creating work about the LGBTQ+ and Middle Eastern communities. Recent directing: *The Model American* (Williamstown, World premiere). Associate: Public Theater, MTC, Playwrights Horizons, Old Globe, Huntington. Fellowships: NYTW, Williamstown, Drama League, Ars Nova. Full credits: dannysharron.com

MARK MYARS (*Senior Associate Choreographer*). Broadway Associate: *The Cher Show, My Fair Lady, SpongeBob SquarePants: The Broadway Musical, War Paint, If/Then*. International Supervisor: *Wicked*. Film/TV Associate: *Isn't it Romantic?, Schmigadoon!* markmyars.com

TREY ELLETT (*Associate Director*). Director: First all Mandarin version of *Rent* (Shanghai). Assistant/Associate Director: *Next to Normal* (Kennedy Center), 20th Anniversary US Tour of *Rent*. As an actor, he was on Broadway in *Amélie* and *Rent* (Mark).

CANDIS C. JONES (*Associate Director*). NY: The Public Theater: *cullud wattah, shadow/land*; American Academy: *The Wolves*; New Black Fest: *Brother Rabbit*; Primary Stages: *Morning in America*; NYU Tisch: *Everybody*. Regional: *Name Calling* (Kennedy Center), *Solo Plays by Black Playwrights* (Williamstown Theatre Festival), *Detroit '67* (Signature Theatre), *53% Of* (Alliance Theater), *Pipeline* (Detroit Public Theater). 2016 Lilly Award, WP Theater's 2018-2020 Lab, Drama League Alumni. candiscjones.com

JENNIFER RIAS (*Associate Choreographer*). Original Broadway Companies: *The Cher Show, Escape to Margaritaville, War Paint, Aladdin*. Broadway debut: *Rock of Ages*. Additional NY credits: *Into the Woods* at the Delacorte, *Rockette* at Radio City

Music Hall. Choreographer: *Spamalot* at Ogunquit Playhouse. Love to Mike and to everyone who got me here!! Greif, Mefford, and Myers ...Thank you.

JONATHAN WARREN (*Associate Choreographer*). Broadway/Tour: *Wicked*, *The Sound of Music*, *A Night with Janis Joplin*. International: *Wicked* (Mexico City). Regional: *La Cage aux Folles*, *West Side Story*, *A Night With Janis Joplin*, *Cats*, *The Radio City Christmas Spectacular*, *The Hot Mikado*. Film: *Outside Providence*.

LIZ CAPLAN VOCAL STUDIOS, LLC (*Vocal Consultant*). Broadway: *Funny Girl* (2022); *Moulin Rouge!*; *Tina*; *Ain't Too Proud*; *Frozen*; *Hedwig*; *The Book of Mormon*; *Aladdin*. Film: *In The Heights*; *The Prom*; *Jingle Jangle*; *Tick Tick... Boom!*; *Dear Evan Hansen*; *Les Misérables*; *The Greatest Showman* (Supervising Vocal Producer); Pixar's *Coco*. TV: *The Get Down* (Netflix); *Colbert Show*; Tony Awards; Academy Awards. Lizcaplan.com.

MATT FARNSWORTH VOCAL STUDIO (*Vocal Coach*) MFVS is honored to work with these talented actors on this masterful show and the others he and his team are currently teaching on Broadway and all over the world. Film: *The Color Purple*, *The Prom*, *Jingle Jangle*, and *Respect*. mattfarnsworthvoice.com @mattfarnsworthvoice

BUIST BICKLEY (*Production Properties Supervisor*). Select Broadway Credits: *Moulin Rouge*, *MJ the Musical*, *Tina*, *Harry Potter and the Cursed Child*, *SpongeBob SquarePants: The Broadway Musical*, *Charlie and the Chocolate Factory*, *The Color Purple*, *The Audience*, *The Elephant Man*, *It's Only a Play*, *The Last Ship*, *Act One*, *The Nance*, and *Other Desert Cities*.

RANDY COHEN (*Keyboard Programmer*). Cohen Keyboards has programmed more than 80 Broadway shows including *Hamilton*, *The Book of Mormon*, *Ain't Too Proud*, *Jagged Little Pill*, as well as the Radio City Christmas Spectacular. TV credits include keyboardist for HBO/PBS *Sesame Street*.

DR. KIRA BANKS (*DEI Consultant*) (She/Her) is a thought leader on anti-racism. She consults across multiple industries, including Broadway and Hollywood, helping organizations take diversity, equity, and inclusion goals from idea to action. Learn about her work and podcast at kirabanks.com

STACEY MINDICH (*Producer*) is a Tony, Grammy, and Olivier Award-winning theatrical producer who nurtured *Dear Evan Hansen* through an eight-year development to a global success that broke every box office record and won six 2017 Tony Awards, including Best Musical, among many other awards and accolades. Stacey Mindich Productions has produced more than 20 other plays and musicals, on and Off-Broadway. Stacey was the recipient of the 2016 Robert Whitehead Award for Excellence in Commercial Producing and The Actors Fund's 2021 Medal of Honor. Believing deeply in the need to develop

new musical works and nurture new voices, Stacey has also funded and enhanced productions for a variety of not-for-profit theaters and is a founding board member of the Lilly Award Foundation, which celebrates, supports, and advocates for women theatre artists by promoting gender parity at all levels of production. She is also the co-chair of the board at New York City Center, which she has guided for the past ten years, particularly focusing on the beloved Encores series. Stacey is currently serving the Biden Administration and was appointed by President Joe Biden to the President's Commission on White House Fellowships, which is a program for leadership and public service that provides young Americans experience working at the highest levels of the federal government. Prior to her career in theatre, Stacey was a journalist and editor and her essays have appeared in two collections of anthologies called Social Graces. Married to Eric Mindich, her favorite productions include her three sons, Russell, Danny, and Charlie.

MICKY LIDDELL (*Producer*). Micky Liddell/LD Entertainment has produced the films *Jackie*, *Judy*, *Anthropoid*, *Introducing Selma Blair*, and *Go*. Theatre credits include *Hadestown*, *Angels in America*, and the Off-Broadway revival of *Little Shop of Horrors*.

HUNTER ARNOLD (*Producer*). Select New York & West End: *Hadestown* (Tony); *The Inheritance* (Tony & Olivier); *Moulin Rouge!* (Tony); *Once on This Island* (Tony); *Dear Evan Hansen* (Tony); *Kinky Boots* (Tony & Olivier); *Little Shop of Horrors* (Drama Desk and Drama League Awards); *Chicken & Biscuits*. @huntercarnold

CAIOLA PRODUCTIONS (*Producer*). Luigi and Rose Caiola. 6 Tony Awards: *The Inheritance*, *Dear Evan Hansen*, *The Color Purple*, *All The Way*, *Who's Afraid of Virginia Woolf*. This Season: *Jagged Little Pill*, *Tina* – *The Tina Turner Musical*, *Company*.

DOUBLE GEMINI PRODUCTIONS (*Producer*). Wendy Federman and Carl Mollenberg collectively have 23 Tony Awards. Thrilled by how many people have been very moved and touched by this show.

FAKSTON PRODUCTIONS (*Producer*). Ken Fakler and Dan Stone are thrilled to be part of the Broadway, London, and National Tours of *Dear Evan Hansen* (Tony Award). Productions include *Beautiful - The Carole King Musical*, *Company*, *Dreamgirls* U.K. Tour, and *The Inheritance* (Tony Award).

ROY FURMAN (*Producer*). Current Productions: *Moulin Rouge!* (Tony Award), *The Book of Mormon* (Tony), *Tina*. Forthcoming: *MJ*, *Funny Girl*. Off-Broadway: *Trevor*, *Little Shop of Horrors*. Vice Chairman Jefferies LLC and Lincoln Center.

HARRIS KARMA PRODUCTIONS (*Producer*). Dede Harris/ Sharon Karmazin have collectively produced over 70 theatrical productions worldwide including 50 Broadway shows, winning 16 Tony Awards, 15 Drama Desk Awards, 5 Olivier Awards.

ON YOUR MARKS GROUP (*Producer*) is a theatrical production company established by award-winning producers Alan D. Marks, Barbara Marks, Scott H. Maruo. With gratitude to our investors, families, friends, and our show's creators.

DARREN BAGERT (*Producer*) has produced over 25 productions including the current Broadway hits *Moulin Rouge!* and *Ain't Too Proud - The Life and Times of the Temptations*. Darren has won every major theatrical award and continues to develop new projects both large and small.

BERLIND PRODUCTIONS (*Producer*). Recent productions include *Shuffle Along*, *A View from the Bridge*, *An American in Paris*, *The Curious Incident of the Dog in the Night-Time*, *All the Way*, *The Book of Mormon*.

BOB BOYETT (*Producer*). *Mrs. Doubtfire*, *Company*, *Tootsie*, *To Kill A Mockingbird*, *Curious Incident of Dog...;* *Ann*, *One Man, Two Guvnors*; *Rock 'n' Roll*; *Drowsy Chaperone*, *War Horse*; *South Pacific*; *Boeing-Boeing*; *Coast of Utopia*; *History Boys*; *Spamalot*, and *Glengarry Glen Ross*.

COLIN CALLENDER (*Producer*) is an award-winning television and theatre producer. Broadway includes *Lucky Guy*, *Casa Valentina*, *Hedwig and the Angry Inch* (Tony Award) and *Harry Potter and the Cursed Child* (Tony Award).

CAITLIN CLEMENTS (*Producer*) makes her Broadway producing debut with *Dear Evan Hansen*. Proud alum of William & Mary and NYU/Tisch. Special thanks to Stacey and 101. Much love and gratitude to my family.

FREDDY DEMANN (*Producer*) has won three Tonys: *Proof*, *Take Me Out*, and *Spring Awakening*. Authors David Auburn and Suzan-Lori Parks won Pulitzers for *Proof* and *Top Dog/Underdog*. Freddy has managed the greatest artists: Michael Jackson and Madonna.

DANTE DI LORETO (*Producer*). Productions include *Funny Girl* (London); *The Glass Menagerie*, *Primo* (Broadway). Executive producer of award-winning programming for FOX, HBO, NBC and Showtime including *P-Valley*, *The Normal Heart*, *Glee*, *American Horror Story* and *Temple Grandin*.

BONNIE FELD AND KENNETH FELD (*Producers*). Kenneth Feld is Chairman and CEO of Feld Entertainment, the global leader in live, touring family entertainment. Bonnie Feld is on the board of Signature Theatre in Arlington, Virginia.

FICKSTERN PRODUCTIONS (*Producer*). Steve Fickinger developed hits *Newsies*, *Aladdin* for Disney. Currently producing for Warner Bros. David I. Stern wrote/produced: *Mozart in the Jungle*, *Free Birds*, *Geppetto*, *Snapshots*, *Open Season* series.

ERIC & MARS J GARDINER (*Producer*). Broadway producing for over 16 years with multiple Tony and Drama Desk awards. Highlights include *Jersey Boys*, *Memphis*, *Les Liaisons dangereuses*, *Girl From the North Country*. Marsi has been on the leadership Council of Broadway Cares Equity Fights Aids. Eric is Co-Founder of Purewrist, a financial technology company. We share our passion for the arts with our family and friends.

ROBERT GREENBLATT (*Co-Producer*). Ran Warner Media (HBO Max), NBC, and Showtime. Tony Awards: *The Inheritance*, *Dear Evan Hansen*, and *A Gentleman's Guide to Love and Murder*. Pioneered NBC's live musicals and produced *Annie Live!* Golden Globe and Peabody awards: *Six Feet Under*.

JEREMIAH J. HARRIS & DARREN P. DEVERNA (*Producer*). Jeremiah J. Harris (Chairman/CEO, PRG) and the late Darren P. DeVerna (former CEO, Global Theatre, PRG). Producing credits include *Beetlejuice* and *Jagged Little Pill*. Partners in Grove Entertainment.

JOHN GORE ORGANIZATION (*Producer*) family of companies includes Broadway Across America and Broadway.com, under 15-time Tony winning producer John Gore (Chairman and CEO).

MIKE KRIAK (*Producer*) Broadway: *Dear Evan Hansen*, *The Prom*. Lincoln Center Theater Board Member. Managing Operating Partner, ConsenSys Mesh, building web3 on Ethereum. Bitcoin Board Member.

DAVID MIRVISH (*Producer*) is based in Toronto where he owns and operates four theatres. Mirvish Productions produces shows throughout Canada, on Broadway, and in London's West End.

EVA PRICE (*Co-Producer*) is a three-time Tony Award-winning Producer. Credits: *Jagged Little Pill*, *Oklahoma!*, *Tina - The Tina Turner Musical*, *Angels in America*, *Dear Evan Hansen*, *On Your Feet!*, *Peter and the Starcatcher*, *Cruel Intentions*, *Small Mouth Sounds*.

ZEILINGER PRODUCTIONS (*Producer*). A New York and London-based production company, Zeilinger Productions has produced more than 30 shows, along with television and film, with additional projects in development. For more information, visit zeilingerproductions.com

ADAM ZOTOVICH (*Producer*). Credits: *The Color Purple*, *An American in Paris*, *Of Mice and Men*, *Driving Miss Daisy*, *A View from the Bridge*, and *Dead Poets Society* at Classic Stage Company starring Jason Sudeikis.

AMBASSADOR THEATRE GROUP (*Producer*). The world's number-one theatre company with 45 venues worldwide, an award-winning producer, and the market leader in theatre ticketing.

INDEPENDENT PRESENTERS NETWORK (*Co-Producer*) is a consortium of 40 of America's leading Broadway presenters. Broadway/London/U.S.tours: *Moulin Rouge!*; *The Band's Visit*; *Dear Evan Hansen*; *Waitress*; *Hello, Dolly!*

THE SHUBERT ORGANIZATION (*Producer*). Under the leadership of Robert E. Wankel, Chairman and CEO, The Shubert Organization owns and operates 17 Broadway and six Off-Broadway theatres. The company has produced and co-produced hundreds of plays and musicals, including the upcoming *Some Like It Hot*.

ARENA STAGE AT THE MEAD CENTER FOR AMERICAN THEATER (*Co-Producer and Originating Theatre*), led by Artistic Director Molly Smith and Executive Director Edgar Dobie, is a national center in Washington, DC, dedicated to American voices and artists. arenastage.org

SECOND STAGE THEATER (*Co-Producer and Originating Theatre*). Under the artistic direction of Carole Rothman, Second Stage produces a diverse range of premieres and new interpretations of America's best contemporary theatre. 2ST recently renovated the historic Helen Hayes Theater making it the only permanent home on Broadway dedicated exclusively to living American playwrights.

101 PRODUCTIONS, LTD. (*General Manager*). Wendy Orshan and Jeffrey M. Wilson founded their company in 1994. General Managers include Chris Morey, Jeff Klein, Ron Gubin, and Associate General Managers Ed Nelson, Bobby Driggers and Christopher Taggart. Broadway and Tours: Tony Award-winning Best Musical *Dear Evan Hansen* (Broadway, Tour, London), *Plaza Suite*, *Pretty Woman: The Musical* (Tour, London). Recent Broadway: *Betrayal*. Upcoming Broadway: *for colored girls who have considered suicide/when the rainbow is enuf*, *Macbeth*. General Management Consultant for the McCarter Theatre.

YOU COULD BE FOUND! We're looking for performers 17 years and older to play high school seniors for our Broadway production, North American tour, London production, and other future *Dear Evan Hansen* productions. We are committed to inclusive and equitable casting for all roles in *Dear Evan Hansen* and are actively seeking people of all races, cultural backgrounds, abilities, and gender identities to audition. Visit dearevanhansen.com/auditions-submission/ to find out more.

CENTER THEATRE GROUP

MEGHAN PRESSMAN (*Managing Director/CEO*) joined Center Theatre Group in 2019. Previously, she served as Managing Director of Woolly Mammoth Theatre Company (D.C.), Director of Development for Signature Theatre (N.Y.), and Associate Managing Director of Berkeley Rep. She is a graduate of Yale School of Drama/Yale School of Management, and serves as a mentor in the Theater Management program. Meghan has served as the Vice-Chair for the Theatre Communications Group Board of Directors, and is a member of the Broadway League.

DOUGLAS C. BAKER (*Producing Director*) joined Center Theatre Group in 1990. Doug is an active member of the Broadway League, the Independent Presenters Network (IPN), and is a proud member of the Association of Theatrical Press Agents and Managers (ATPAM). In 2013, Doug received the Broadway League's prestigious Outstanding Achievement in Presenter Management Award.

GORDON DAVIDSON (*Founding Artistic Director*) led the Taper throughout its first 38 seasons, guiding over 300 productions to its stage and winning countless awards for himself and the theatre—including the Tony Award for theatrical excellence, Margo Jones Award, The Governor's Award for the Arts, and a Guggenheim fellowship. *The Kentucky Cycle* and *Angels in America (Part One)* won the Pulitzer in consecutive years and, in 1994, three of the four plays nominated for the Tony Award for Best Play were from the Taper (*Angels in America* won). In 1989, Gordon took over the Ahmanson and, in 2004, he produced the inaugural season in the Kirk Douglas Theatre.

NOT-FOR-PROFIT PARTNERS

DEAR EVAN HANSEN is proud to collaborate with:



CHILD MIND INSTITUTE is an independent, national nonprofit dedicated to transforming the lives of children and families struggling with mental health and learning disorders.



CRISIS TEXT LINE is free, 24/7 support for those in crisis. Text 741741 from anywhere in the US to text with a trained Crisis Counselor. Crisis Text Line trains volunteers to support people in crisis.



THE JED FOUNDATION is a nonprofit that exists to protect emotional health and prevent suicide for our nation's teens and young adults.



THE TREVOR PROJECT is the leading national organization providing crisis intervention and suicide prevention services to lesbian, gay, bisexual, transgender, and questioning young people.



BORN THIS WAY FOUNDATION is committed to supporting the wellness of young people and empowering them to create a kinder and braver world.



THE LOVELAND FOUNDATION'S Therapy Fund provides therapy support to Black women and girls nationwide.

For more information about our not-for-profit partners, visit: dearevanhansen.com/partners

DEAR EVAN HANSEN TOUR STAFF

Broadway Opening Night: December 4, 2016 - Music Box Theatre
Tour Opening Night: October 5, 2018 - Buell Theater, Denver, CO

STACEY MINDICH PRODUCTIONS

Executive DirectorAnna Pitera DeVito
Contributing Consultant.....Caitlin Clements
Executive Assistant to Producer.....Lynn Matsumoto
Apprentice.....Eniola Sodeke

GENERAL MANAGEMENT

101 PRODUCTIONS, LTD.

Wendy Orshan Jeffrey M. Wilson
Ron Gubin Chris Morey Jeff Klein
Ed Nelson Bobby Driggers Christopher Taggart
Beth Blitzer Kathy Kim Hilary Hamilton
Katie Andrew DeAnn Boise Lizz Cone Coleman Ray Clark
Adam First Michael Gremo Rob Gallo Michael Leibring
Robert Nolan Jenny Peek Laura Quintela Rachel Roberson
Stephanie Smith Christine Stump Steve Supeck Nicole Suazo
Ryan Sweeney Michael Leon Thomas

COMPANY MANAGER

DeAnn L. Boise

Associate Company ManagerLaura Quintela
Assistant Company ManagerRobert Gallo

MARKETING & PUBLICITY DIRECTION

BOND THEATRICAL

bondtheatrical.com

DJ Martin Temah Higgins Mollie Mann
Marc Viscardi Wendy Roberts
Bailey Ford

NATIONAL PRESS REPRESENTATIVES

grapevine public relations
Molly Barnett Chelsea Nachman

TOUR BOOKING AGENCY

THE BOOKING GROUP
Meredith Blair, Kara Gebhart
Laura Kolarik, Stephanie Ditman
www.thebookinggroup.com

CASTING

TARA RUBIN CASTING

Tara Rubin, CSA

Merri Sugarman, CSA Claire Burke, CSA
Peter Van Dam, CSA Felicia Rudolph, CSA
Xavier Rubiano, CSA Kevin Metzger-Timson, CSA
Louis DiPaolo Spencer Gualdoni

LEGAL COUNSEL

LEVINE PLOTKIN & MENIN, LLP

Loren Plotkin Conrad Rippy Susan Mindell
Daniel Watkins Emily Erstling Kevin Hess Cris Criswell

PRODUCTION MANAGEMENT

JUNIPER STREET PRODUCTIONS

Hillary Blanken Ana Rose Greene Sadie Alisa
Guy Kwan Victoria Bullard Ross Leonard
Christopher Batstone Hannah Wilson

PRODUCTION SUPERVISOR

Judith Schoenfeld

General ManagerChris Morey
Engagement Management.....Ron Gubin
Production Stage ManagerJovon E. Shuck
Stage Manager.....Stacy N. Taylor
Assistant Stage ManagerKatelynn Cooper
Senior Associate Director.....Danny Sharron
Senior Associate ChoreographerMark Myers
Associate Directors.....Trey Ellett, Candis C. Jones
Associate ChoreographersJennifer Rias, Jonathan Warren
Assistant DirectorMiranda Cornell
Associate Scenic DesignersAmanda Stephens, James Burns
Associate Costume DesignerClare Wasserman
Associate Lighting DesignerKen Wills
Assistant Lighting Designer.....Jessica Creager
Associate Projections DesignersDan Scully, David Bengali
Associate Sound DesignerJessica Paz
Natural Hair Consultant.....Jennifer Lord
DEI Consultant.....Dr. Kira Banks
Vocal ConsultantLiz Caplan
Voice Coach.....Matt Farnsworth Vocal Studio
Production CarpenterChad Woerner
Production ElectricianJeremy Wahlers
Moving Light Programmers.....Scott K. Tusing, Jeremy Goldenberg
Video/Projections EngineerAsher Robinson
Video/Projection ProgrammersBenjamin Keightley, Zach Peletz
Lead Video/Projection EditorAndrew Bauer
Video/Projection EditorDan Vatsky
Additional Video Editing.....Robert Figueira
Video InternNick Graci
Productions Props.....Buist Bickley
Assistant Production Props.....Chris Kavanah
Production SoundNick Borisjuk
Music CoordinatorsMichael Keller, Michael Aarons
Music Assistant.....Haley Bennett
Assistant Keyboard Programmer.....Taylor Williams
Guitar ProgrammerDillon Kondor
Covid Safety Managers.....Ellen O'Neill, Kevonna Shuford
Management Assistant.....Coleman Ray Clark
Production Assistants.....Julius Cruz, Eric Nolan Mattingly
Music Executive for Benj Pasek and Justin PaulJordan Carroll
Assistant to Benj Pasek.....Danielle Perelman
Assistant to Justin PaulSavannah Hankinson
Assistant to Steven Levenson.....Matt Steinberg

TOURING CREW

Head CarpenterJamie Kurtz
Flyman CarpenterJason Edens
Automation Carpenters.....Randy DeBoer, Lisa LePoidevin
Assistant CarpenterChris Weber
Advance CarpenterGeoff Keller
Head Electrician.....Nate Eyestone
Assistant Electricians.....Rob Connors, Jordan Brown
Advance Electrician/VideoBenjamin Abernathy
Head Audio.....Justin Graziani
Assistant AudioTyler Ponath
Advance Audio.....Alex Ritter
Head Props.....Karen Byers
Assistant PropsTBD
Crew Covers.....Robert DiCandia, Mark "Sparky" Mallory
Head Wardrobe.....Matt Myers
Assistant WardrobeJamie Brown
Hair & Wig SupervisorJessica McGinty
Hair & Wardrobe Swing.....Vicky Martinez
Physical Therapy.....Neuro Tour Physical Therapy, Inc. /
Carolyn Lawson
Medical Director.....Dr. Craig Weil
AccountantWithumSmith + Brown, PC/
Robert Fried, Karen Kowgios, Anthony Moore, CPAs

Controller Galbraith & Co./Sarah Galbraith
 Advertising & MarketingSerino Coyne/Hailey Barton, Tom Callahan,
 Jay Cooper, Peter Gunther, Madeline Hurley Jones, Jennifer Matte,
 Jacqueline Rosas, Matt Upshaw, Bradlie Yanniello
 Social Media Marathon Digital/Mike Karns, Melanie Pateiro,
 Ava Coploff, Polina Sapershteyn, Nathan McMonigle
 Tour Marketing & Publicity Direction BOND Theatrical/
 Jenny Bates, Philip Aleman, Melissa Cohen, Steph Kelleher,
 Madison St. Amour, Megan Savage, Adrienne Richards,
 Simon Rosales, Janiya Wade, Jacob Stuckelman, Yoomi Kim
 DEH Global Ticketing & Analytics..... TANNA Inc./Gregg Arst
 Casting Associate Kevin Metzger-Timson
 Banking.....City National Bank
 InsuranceDeWitt Stern Group, Inc.
 Housing..... Road Concierge / Lisa Morris
 Air TravelTzell Travel / Andi Henig, Alan Braunstein,
 Jeanne Lafond
 Merchandising Creative Goods Merchandise
 Merchandise Manager Annika Petrossian
 Key Art DesignMatthew Cohen
 Production Photographers.....Matthew Murphy, Jenny Anderson
 Production B-Roll.....HMS Media
 Payroll Services..... Checks & Balances
 TruckingClark Transfer
 Company Mascots.....Katie, Harper, Lucy, Butler, Gatsby,
 Winston Jones

SPECIAL THANKS

Jack Viertel;
 Craig Kallman, Pete Ganbarg (Atlantic Records)
 National Museum of American History of the
 Smithsonian Institution
 Dolly Chugh; Holly Sutton; Michael Leibring; Zak Risinger

To learn more about this production, please visit
www.dearevanhansenbroadway.com

Please follow us on Twitter, Facebook, Instagram & TikTok:
 @DearEvanHansen

CREDITS

Scenic items fabricated by PRG-Scenic Technologies. Show control and scenic motion control featuring Stage Command Systems by PRG-Scenic Technologies, a division of Production Resource Group, LLC, New Windsor, NY. Scenic elements provided by Daedalus Design and Production, Inc. Lighting Equipment from PRG Lighting. Audio Equipment from PRG Audio. Video projection system provided by Worldstage. Props built by: Behind The Mule Studio, Gen-esis Upholstery, and Brenbri Props. Evan Polo by By Barak LLC. Costume support by: Gene Mignola, Cego Shirtmakers, Timberlake Studios Inc., and Jeff Fender Studio Inc. Cover photo by Joan Marcus and Margo Schulman. Hosiery and undergarments provided by Bra*Tenders. Props trucking by JP Carrier. Upholstery by R Ramos Upholstery.

PHOTO CREDITS

Photos, including those under Creative Commons license, are credited to (OvO), @abrunvoll, 123rf, acheron0, Adrienne Wichard-Edds, Aidan Sage, Alan, Alexis Evans-Krueger, Alisha Var-gas, Alka Phi, Andrea, Andrew Bauer, Andrew Tseng, Andy Arthur, AndyCunningham, Art by David Evans, Ashley Bischoff, Astacus, babyratio, Barabeke, Becky, BellaGaia, bet-yarlaca, biwanoki, buzzbo, CAHairyBear, Casey Bisson, Cesar Garza, Cheyenne Michaels, Chris Burke, Chris Goldberg, Chris Macke, Christa Terry, Christian Kortum, Christin Bela, chusall, Cl@ra-bella, Constantinis, Crimic Gulmatico, Curtis Fry, Dale Bush, Daniel Ernst, Daniel Hoherd, Daniel Kulinski, Darren Hester, David Goehring, Davide Costanzo, Debby Conway, Desert Bus For Hope, dfb, Dimitris Plantzos, Dustin Moore, Ed Yourdon, Eivind Senneset, Elias Roviolo, eltpics, Emily Eidenberger, Eric Wagner, Erica M, European Roads, Eva Swap, Fa-

bian Sanhueza, Flori-an Seroussi, Garen Meguerian, Giles Watson, Glenn Austerfield, Gordon, gpointstudio, Grellan, Haleyface, Harnner_Fotos, Hayati Manshor, HeatherBie, indielectic, Irina Fuks, IRR1 Photos, Isra Se Go, ItzaFineDay, Ivana Vasilij, Jacob Gube, Jacob Loupe, jacqueline-w, jakubzak, James Emery, Jeff Dandaldson, Jerry Meaden, Jessie, Jessie Eastland, Jim Roberts, Jim Scott, Joe Diaz, Joel Abroad, Joel Ackerman, John Loo, Jonathan Yao, Jorge Montiel, Jory, Julie Faist, Julie Jordan Scott, Julochka, Kamil Medryk, Karen Broz, Kendra Goering, Kevin Miller, Kim F, Kim Tairi, Kit, kittencakes, Kurt & Julie Faist, Lauren Vandevier, Ijubaphoto, Loren Kerns, m-imagephotogra-phy, Margaret Harrison, Maria Fernanda Aristizabal M., Maria Morri, Massimo Ankor, Massimo Ankor, Matthew Glover, Melissa Ingram, Mighty Mighty bigmac, Miguel Ariel Contreras Drake-McLaughlin, Mike F., Mike Faist, Mike Gifford, miuenski miuenski, Munchen, Museum im Residenzschloss, Kaisersaal, Nanda, Nathan Kemmerer, neeroc1, noisy nisroc, oddobjects, Patricia, Paul Bausch, Paul Jacobson, Paul Johnson Pahotography, Petar Cher-naev, Peter Kemmer, Philip, Presidio of Monterey, PRODavide Costanzo, Rachel Barenblat, Radist, Randy McDonald, Rasicca, Ridofranz, rik-shaw, Roadside-pictures, Robert Hutton, Robert Lochner, Rodrigo Della Favera, Rodrigo Della Favera, Rodrigo Della Favera, Rodrigo Sá Bar-reto, Rogan Templer, Ron Lute, rubyblossom., Ruth Sattler, Samandel.com, Shari Alisha, Shirin Tinati, smashpoppineteen, Stefan Kloeck, tanakawho, Taylor McBride, Thanh Pham, the autow-itch, The Wolves Of Bathlam, Tito Perez, TNS Sofres, Tomasz Konefal, Tommy Ga-Ken Wan, Tony & Wayne, Tony Baldasaro, Tony Hammond, Travis Baugh, Universal Pops, Unknown, US Army Africa, Virginia (Ginny) Sanderson, Wade Tregaskis, Wendy Brown, Will Wysong,
www.mosalumni.info

This production was rehearsed at Sunlight Studios.



The Actors and Stage Managers employed in this production are members of Actors' Equity Association, the Union of Professional Actors and Stage Managers of the United States.



The following employees are represented by the International Alliance of Theatrical Stage Employees, Moving Picture Machine Operators, Artists and Allied Crafts of the United States, its Territories and Canada, AFL-CIO, CLC: Stage Crew Local 33; Treasurers and Ticket Sellers Local 857; Wardrobe Crew Local 768; Make-up Artists and Hair Stylists Local 706.



The Musicians, Conductors, Music Preparation Personnel and Librarians employed in this production are members of the American Federation of Musicians of the United States and Canada.



The Press Agents and Company Managers employed in this production are represented by the Association of Theatrical Press Agents & Managers.



The Director and Choreographer are members of the Society of Stage Directors and Choreographers, Inc., an independent national labor union.



United Scenic Artists represents designers and scenic artists for the American Theatre.



This production is produced by a member of The Broadway League in collaboration with our professional union-represented employees.

Center Theatre Group is a member of the League of Resident Theatres (LORT), the American Arts Alliance, the Broadway League, Independent Producers' Network (IPN), and the Theatre Communications Group (TCG).

MEGHAN PRESSMAN Managing Director/CEO | **DOUGLAS C. BAKER*** Producing Director

GORDON DAVIDSON Founding Artistic Director

Center Theatre Group would like to thank its exceptional staff for their ongoing commitment, dedication, and extraordinary efforts.

ARTISTIC

LUIS ALFARO, LINDSAY ALLBAUGH*, TYRONE DAVIS,
NEEL KELLER*, KELLEY KIRKPATRICK*..... Associate Artistic Directors
TIFFANY SLAGLE..... Artistic & Literary Administrative Assistant
MATTHEW BOURNE, CASEY NICHOLAW, PHYLGIA RASHAD,
ANNA D. SHAPIRO, PAULA VOGEL..... Associate Artists
D'LO, MIKAAL SULAIMAN..... Sherwood Award Recipients, 2021

EXECUTIVE

CAMILLE SCHENKKAN*..... Deputy Managing Director
LISA D. RICHARDSON..... Manager, Executive Office
ERIC SEPPALA..... Executive Assistant to the Managing Director/CEO

LYNNE GUGENHEIM..... Advancement Strategy, Special Events
& Leadership Consulting

MANAGEMENT

NAUSICIA STERGIUO*..... General Manager
ERIC SIMS*..... Ahmanson Theatre Presentations Manager
KATIE SOFF*..... Associate General Manager
MEGAN AARON..... Company Manager & Assistant General Manager
JEFFREY UPAH*..... General Management Associate
ADRIENNE KNIGHT..... Assistant Company Manager

EDUCATION AND COMMUNITY PARTNERSHIPS

TRACI KWON*..... Arts Education Initiatives Director
JESUS REYES*..... Community Partnerships Manager
NICO ROSARIO..... Creative Workforce Initiatives Director
AURORA ILOG..... Department Manager
COURTNEY CLARK..... Digital Learning Manager
MEIGHAN LA ROCCA..... Education & Community
Partnerships Coordinator
ESTELA GARCIA, DEBRA PIVER*..... Resident Teaching Artists
CHRISTINE BREIHAN, ZACHARY BROWN,
RAMY EL-ETREBY, CRISTINA FRIAS, AJA HOUSTON,
JOHNATHON L. JACKSON, MARA PALMA,
TARA RICASA, JESSICA VOLPI..... Teaching Artists

PRODUCTION

JOE HAMLIN*..... Director of Production
KRYSTIN MATSUMOTO..... Production Manager
CHRISTOPHER REARDON..... Production Manager
KATIE CHEN..... Associate Production Manager
BEONICA BULLARD..... Assistant Production Manager
CAMBRIA CHICHI..... Production Coordinator

SHAWN ANDERSON*..... Head Carpenter (Ahmanson Theatre)
SCOTT LUCAS..... Head Properties (Ahmanson Theatre)
ROBERT SMITH*..... Head Sound (Ahmanson Theatre)
SHANE ANDERSON..... Head Flyrail (Ahmanson Theatre)
MICHAEL GARDNER*..... Wardrobe Supervisor (Ahmanson Theatre)
MARY BORGIA..... Hair & Make-up Supervisor (Ahmanson Theatre)
CHRISTINE L. COX*..... House Manager (Ahmanson Theatre)
EMMET KAISER*..... Head Carpenter (Mark Taper Forum)
MARY ROMERO..... Head Properties (Mark Taper Forum)
AARON STAUBACH*..... Head Electrician (Mark Taper Forum)
MARGAUX 'MAGO' MORALES..... Head Sound (Mark Taper Forum)
LINDA WALKER*..... House Manager (Mark Taper Forum)
NOAH ULIN..... Head Electrician and Projection Technician
(Kirk Douglas Theatre)
ADAM PHALEN*..... Head Audio (Kirk Douglas Theatre)
ZANE WAYNERIGHT..... Stage Supervisor (Kirk Douglas Theatre)
MADELINE SCHUMACHER..... Wardrobe Supervisor
(Kirk Douglas Theatre)

CHAD SMITH*..... Technical Director
CHLOE JOY, BRADLEY WEHRLÉ..... Assistant Technical Director
EDUARDO FERNANDEZ-BAUMANN..... Shop Coordinator

MERRIANNE NEDREBERG*..... Prop Director
KATE REINLIB..... Associate Prop Director
ERIC BABB..... Assistant Prop Director
ANGELENE STOREY..... Prop Coordinator
RAUL VEGA MARTINEZ..... Prop Carpenter
DOMINIQUE JAKOWEC..... Summer Prop Apprentice
RASHON WILSON..... Costume Director
WHITNEY OPPENHEIMER..... Costume Shop Manager
CAYLYN DABNEY..... Resident Assistant Costume Designer
ASHPHORD JACOWAY..... Resident Assistant Costume Designer

OPERATIONS

PETER WYLIE..... Operations & Facilities Director
CHASE ANDERSON-SHAW..... KDT House & Concessions Manager
NIKI ARMATO..... Facilities Associate
JULIO A. CUELLAR*..... Facilities Assistant
VANESSA DE LOERA..... Facilities Coordinator
JASMINE BRAFF..... Operations Supervisor
CURT GAVIN..... Operations Assistant
NAT PERRY, D'ANGELO ANDERSON, REGINA NILES..... Drivers
VANESSA BRADCHULIS, LILY BROWN,
OLIVIA CHOATE, PRESSLY COKER, MONICA GREENE,
T'WON POPE, SAM UDERO..... Stage Door
LIV SCOTT..... Lead CCO and Testing Coordinator
NICKI HESKIN..... Temporary COVID Communications Manager
SEBASTIAN DE LA PAZ, GUADALUPE GARCIA,
JENNIFER HALDEMAN, DENISE KIA, CRAIG LAWRENCE,
PAT LOEB, SIMON MARTIN, SATI THYME..... COVID Compliance Officers & Operational Support Staff

FINANCE, INFORMATION TECHNOLOGY, AND HUMAN RESOURCES

CHERYL SHEPHERD..... Chief Financial Officer
SARAH STURDIVANT..... Director of Finance & Technology
SUZANNE BROWN..... Controller
DENICE BEHDAD..... Assistant Controller
ANAHITA ASHRAFIPOUR..... Temporary Senior Accountant
NAKISA ASCHTIANI..... Senior Staff Accountant
XOCHITL ORTEGA..... Accounts Payable Supervisor
KERRY LARICK..... Accounting Assistant
JESSICA HERNANDEZ..... Payroll Manager
JUAN MARTINEZ..... Payroll Specialist
AMBER JACKSON..... Temporary Payroll Assistant

TOM MEGALE..... Director of Business Applications
JANELLE CABRERA TORRES..... Tessitura &
Web Administration Director
JOEY SOLANO..... Digital Product Manager
CHIMA OMEAKU..... Help Desk Support
CRIS SPACCA*..... Tessitura & IT Support

JODY HORWITZ..... Director of Human Resources
CRISTINA TORRES..... Human Resources Generalist

MOSS ADAMS..... Auditor
MICHAEL C. DONALDSON, LISA A. CALLIF..... Legal Counsel
GIBSON, DUNN & CRUTCHER..... Legal Counsel

INSTITUTIONAL ADVANCEMENT

TONY JENNISON..... Interim Director of Institutional Advancement
RICKY CARTER..... Director of Major and Planned Gifts
MICHAEL CHAVEZ..... Director of Special Events
ASHLEY TIERNEY..... Director of the Annual Fund & Operations
PAULA MATALLANA..... Associate Director of Institutional Grants
SARAH RIDDLE..... Associate Director, Annual Fund & Operations
VANESSA WHEELER..... Associate Director of
Gift Accounting & Research

PRIYA PATEL..... Corporate Relations Officer
ELIZABETH DELLORUSSO..... Major Gifts Officer
MIKE RATTERMAN..... Telefunding Manager
NICOLE SCIPIONE*..... Individual Giving Officer
KATELIN URGO..... Individual Giving Officer
OLIVIA BERUMEN..... Donor Stewardship &
Communications Coordinator
JULIA ELISEEVA..... Advancement Events Associate
GRACELYN SWEENEY..... Advancement Operations Assistant
MORGAN THOMAS..... Gift Accounting & Data Analyst
EARL KLASKY..... Institutional Advancement Coordinator
AL BERMAN*, VARTAN MERJANIAN, BENJAMIN SCHWARTZ,
PAUL VITAGLIANO..... Donor Advisors

MARKETING AND GRAPHICS

DEBORAH WARREN..... Director of Marketing
EMYLÍ GUDMUNDSON..... Associate Director,
Advertising & Creative Content
CANDICE WALTERS..... Associate Director, Marketing Operations
KIYOMI EMI*..... Manager, Audience Development
& Marketing Events
MARCY PANIAGUA..... Social Media Associate
KATHARINE MEANS..... Marketing Coordinator
CAROLINE THOMPSON/IMPACT 123..... Media Planning
CAROL HALL/CAROL HALL & ASSOCIATES..... Marketing Consultant
ALLIED GLOBAL MARKETING..... Digital Buyer

DEANNA McCLURE..... Art & Design Director
JAVIER VASQUEZ..... Digital Content Producer
IRENE T. KANESHIRO*..... Senior Design Manager
TARA NITZ..... Senior Designer
SANDI SILBERT..... Senior Designer

COMMUNICATIONS

JASON MARTIN*..... Head of Publicity
JESSICA DOHERTY..... Associate Editorial Director
COURTNEY HEIMBUCK..... Publicist
LINDSAY JOHNSTON..... Junior Publicist

TICKET SALES AND SERVICES

SHAWN ROBERTSON*..... Ticket Sales Director
SKYPP CABANAS*..... Senior Manager, Ticket Operations
TINTIN NGUYEN..... Ticketing Operations Coordinator
MICHAEL ZOLDESS*..... Senior Manager, Account Sales
SANDY CZUBIAK*..... Audience & Subscriber Services Director
JENNIFER BAKER*, CHERYL HAWKER*..... Audience Services Supervisors
LUIS ESPINOZA..... Audience Services Assistant Supervisor
GARY HOLLAND*, CHRISTIAN UNGER..... Audience Services Sales Associate
JESSICA ABROMAVICH, JUSTINE PEREZ*..... Donor Associates
KIMBERLY ARENCIBIA, VICKI BERNDT*,
CLAY BUNKER, FRANK ENSENBARGER, JONATHAN FLORES,
DANIEL GARCIA, MICHAEL MUNOZ, FELIPE ROQUE..... Audience Services Representatives
DANUTA SIEMAK*..... Subscriber Services Supervisor
CHRISTINA GUTIERREZ*..... Subscriber Services Asst. Supervisor
LIGIA PISTE*, PETER STALOCH*..... Subscriber Services Senior Representatives
SARAH K. GONTA*..... Box Office Treasurer
MICHAEL VALLE*..... 1st Assistant Treasurers
KATLYN GALVEZ, KEANA JACKSON,
MICHAEL KEMPIST*, RICHARD RUBIO..... 2nd Assistant Treasurers
DENISE REYNOSO..... On-Site Customer Service Lead
JILL GILBRAITH, CHELSEY MAUS, ALYSSA POWER, ERIC SOLIS..... On-Site Customer Service Representatives
SD&A TELESERVICES, INC..... Outbound Sales Partner

ARTISTIC DEVELOPMENT & COMMISSIONS

As part of our commitment to supporting new plays and playwrights, we foster and develop a broad range of theatrical work from diverse artists locally, nationally, and abroad.

Artists creating new work commissioned by Center Theatre Group this season:

STEVE CUFFO	LISA KRON	LYNN NOTTAGE
LISA D'AMOUR	KIMBER LEE	MARCO RAMIREZ
LARISSA FASTHORSE	YOUNG JEAN LEE	SARAH RUHL
JENNIFER HALEY	MATTHEW LOPEZ	LUIS VALDEZ
ALESHEA HARRIS	JANINE NABERS	PAULA VOGEL
RAJIV JOSEPH	QUI NGUYEN	KAREN ZACARIAS

Since 2005, we have invited local playwrights to spend a year researching and writing a new work with the feedback of their fellow writers and artistic staff as part of our **L.A. Writers' Workshop**. Our growing community currently contains more than 100 playwrights. 2021/22 Season members:

JAMI BRANDLI	JULIE TAIWO ONI	PIA SHAH
JUNE CARRYL	LISA RAMIREZ	JUDY SOO HOO
JESSICA KO	TISHA MARIE	DELANNA STUDI
PENELOPE LOWDER	REICHEL-AGUILERA	

Learn more at CTGLA.org/Artists.