

PETER PAN GOES WRONG

FIRST SEASON PRODUCTION

2:22 – A GHOST STORY

Written by Danny Robins

Directed by Matthew Dunster

OCTOBER 29 – DECEMBER 4, 2022

BONUS PRODUCTION

**AIN'T TOO PROUD – THE LIFE AND TIMES
OF THE TEMPTATIONS**

Book by Dominique Morisseau

Music & Lyrics from The Legendary Motown Catalog

Directed by Des McAnuff

Choreographed by Sergio Trujillo

DECEMBER 13, 2022 – JANUARY 1, 2023

SECOND SEASON PRODUCTION

THE SECRET GARDEN

Book and Lyrics by Marsha Norman

Music by Lucy Simon

Directed and Choreographed by Warren Carlyle

FEBRUARY 19 – MARCH 26, 2023

THIRD SEASON PRODUCTION

1776

Music and Lyrics by Sherman Edwards

Book by Peter Stone

Based on a Concept by Sherman Edwards

Directed by Jeffrey L. Page and Diane Paulus

Choreography by Jeffrey L. Page

APRIL 11 – MAY 7, 2023

FOURTH SEASON PRODUCTION

A SOLDIER'S PLAY

Written by Charles Fuller

Directed by Kenny Leon

Starring Norm Lewis

MAY 23 – JUNE 25, 2023

FIFTH SEASON PRODUCTION

INTO THE WOODS

Music & Lyrics by Stephen Sondheim

Book by James Lapine

Choreographed by Lorin Latarro

Music Supervisor Rob Berman

Directed by Lear deBessonet

JUNE 27 – JULY 30, 2023

FINAL SEASON PRODUCTION

PETER PAN GOES WRONG

Written by Henry Lewis

Jonathan Sayer & Henry Shields

Directed by Adam Meggido

Featuring Members of the

Original Mischief Company

AUGUST 8 – SEPTEMBER 10, 2023

PETER PAN GOES WRONG

FIRST SEASON PRODUCTION

2:22 – A GHOST STORY

Written by Danny Robins

Directed by Matthew Dunster

OCTOBER 29 – DECEMBER 4, 2022

BONUS PRODUCTION

**AIN'T TOO PROUD – THE LIFE AND TIMES
OF THE TEMPTATIONS**

Book by Dominique Morisseau

Music & Lyrics from The Legendary Motown Catalog

Directed by Des McNuff

Choreographed by Sergio Trujillo

DECEMBER 13, 2022 – JANUARY 1, 2023

SECOND SEASON PRODUCTION

THE SECRET GARDEN

Book and Lyrics by Marsha Norman

Music by Lucy Simon

Directed and Choreographed by Warren Carlyle

FEBRUARY 19 – MARCH 26, 2023

THIRD SEASON PRODUCTION

1776

Music and Lyrics by Sherman Edwards

Book by Peter Stone

Based on a Concept by Sherman Edwards

Directed by Jeffrey L. Page and Diane Paulus

Choreography by Jeffrey L. Page

APRIL 11 – MAY 7, 2023

FOURTH SEASON PRODUCTION

A SOLDIER'S PLAY

Written by Charles Fuller

Directed by Kenny Leon

Starring Norm Lewis

MAY 23 – JUNE 25, 2023

FIFTH SEASON PRODUCTION

INTO THE WOODS

Music & Lyrics by Stephen Sondheim

Book by James Lapine

Choreographed by Lorin Latarro

Music Supervisor Rob Berman

Directed by Lear deBessonet

JUNE 27 – JULY 30, 2023

FINAL SEASON PRODUCTION

PETER PAN GOES WRONG

Written by Henry Lewis

Jonathan Sayer & Henry Shields

Directed by Adam Meggido

Featuring Members of the

Original Mischief Company

AUGUST 8 – SEPTEMBER 17, 2023



friend.
insider.
visionary.

you!

**YOUR MEMBERSHIP EXPERIENCE
AT CENTER THEATRE GROUP**

As a nonprofit organization, Center Theatre Group relies on the support of generous theatre-lovers like you. Become a member with a tax-deductible contribution of \$100—or just \$10 per month—and make a vital difference for our future following the most challenging period in Center Theatre Group's history. Your gift will enable us to continue to produce and present the highest caliber theatre, nurture new artists, and provide transformative arts education programs.

Plus, your gift will unlock membership benefits to enhance your theatregoing experience, from priority ticket access to members-only events and more!

Learn more at CTGLA.org/membership



**SCAN HERE TO SUPPORT
CENTER THEATRE GROUP NOW**

QUESTIONS?

Call our Membership Concierge
at **213.972.7564** or email membership@CTGLA.org

friends

Friends get first access to tickets before the general public plus invitations to members-only events, including tours and rehearsals. ***Join today with a gift of \$100 or more—or just \$10 per month.***

insiders

Insiders enjoy a year-round VIP experience with access to the best seats for our shows, concierge service for house seats at New York and London productions, and special behind-the-scenes events. ***Join today with a gift of \$2,500 or more.***

visionaries

Visionaries have the ultimate access to our artists, shows, programs, and staff, with premium seating for our productions, including use of The Founders' Room at the Ahmanson, and invitations to private salon-style artist events. ***Join today with a gift of \$15,000 or more.***

**CENTER
THEATRE
GROUP**

Peter Pan

CAST

NARRATOR – Francis Beaumont

The Darling Family

WENDY DARLING – Sandra Wilkinson

JOHN DARLING – Dennis Tyde

MICHAEL DARLING – Max Bennett

MARY DARLING – Annie Twilloil

GEORGE DARLING – Chris Bean

NANA THE DOG – Robert Grove

LISA – Annie Twilloil

Neverland

PETER PAN – Jonathan Harris

TINKER BELL – Annie Twilloil

THE CROCODILE – Max Bennett

CURLY – Annie Twilloil

TOOTLES – Lucy Grove

The Pirates

CAPTAIN HOOK – Chris Bean

MR SMEE – Dennis Tyde

STARKEY – Robert Grove

CECCO – Francis Beaumont

CREATIVE

Writer – J.M. Barrie (in a new adaptation by Susie H.K. Brideswell)

Director – Chris Bean

CO - Assistant Director – Robert Grove

Stage Manager – Trevor Watson

Flying Operator – Not yet known

Assistant Stage Manager – Gill Jones



At the time of printing this programme (two days ahead of opening night) no Flying Operator has been found. If you would like to operate the flying system for our production then please make yourself known at the theatre. We can pull some strings so that you can pull some strings.

CORNLEY **YOUTH THEATRE**

The Cornley Youth Theatre is an organisation that takes talented, enthusiastic and/or available youths and gives them an opportunity to experience working with real near-professional actors and directors. My niece Lucy Grove a keen CYT member is appearing in tonight's production of *Peter Pan*.

I am delighted to report it has been another hugely positive year for the Cornley Youth Theatre. A highlight of the year was our field trip to the New Forest, in preparation for our performance of *Lord of the Flies*. I equipped the children with knives and a limited food supply, then left them to fend for themselves for six days while I stayed at a local Holiday Inn. Although I had intended for them to stay for three weeks, the trip had to be cut short due to the unfortunate interference of the police, however the children still found it to be a fascinating experience, which resulted in a breathtaking production upon our return to Cornley. Unfortunately, this theatrical triumph was somewhat marred by the fact I had neglected to do a head count on the outbound journey and two members of the youth theatre Ben McIntyre and Sarah Cordell were left behind in the forest and have never been found. If either the McIntyre or Cordell family should read this, I again offer my deepest sympathies, and remind you once more that the annual membership fee is non-refundable.

I send my warmest wishes to Lucy for her debut tonight, and hope that in the true spirit of *Peter Pan* she will remind us of how magical the world is before we grow up.

If anyone would like to sign their children up to the Cornley Youth Theatre, please contact me via email robertgoodactor@hotmail.com. Membership fees are non-refundable.

ROBERT GROVE
Head of Cornley Youth Theatre

UPCOMING –

CORNLEY PRODUCTIONS AND EVENTS



Wind in the Willows

On Thursday 7th May Robert Grove will be taking over 400 electric fans down to Cornley Public Park for a more literal one-man adaptation of the classic tale.



Wind in the Widows

On Friday 8th May Robert Grove will take his 400 electric fans down on from the park to Cornley Retirement Home to perform an avant-garde twist on his one-man literal adaptation.



Wind in the Pillows

On Saturday 9th May Robert Grove will then take his 400 electric fans back to public park along with 400 of Cornley Retirement Home's goose feather pillows for an even more avant-garde twist on his one-man literal adaptation.



Peter Pan Backstage Tour

Come and see how the magic works on one of our behind the scenes tours. We'll show you the secrets of the forest of Neverland, The Jolly Roger and more! NB – We are required to tell you that our Peter Pan Backstage Tour has been given the safety assessment rating "Hazardous to All" and we are legally obliged to advise you not to participate.

CORNLEY RE-WRITING INITIATIVE



We're delighted to announce that we will be presenting two pieces of new writing based on Shakespeare's classic plays....

Romeo and Juliet 2: Back From the Dead

Two households, both alike, both full of zombies. Watch as Friar Lawrence fends off the resurrected corpses of the characters who died in Romeo & Juliet.



Timon (and Pumba) of Athens

We're bringing this Shakespearian tragedy into the 21st century by adding everyone's favourite Lion King character "Pumba". Come and watch the generous Athenian give away his fortunes while Pumba sings to make him less anxious. Hakuna Matata.

ANNIE TWILLOIL W.L.T.M.

Hello. My name is Annie Twilloil and I'm looking for a man. No one too tall or good looking please, I've tried them and it hasn't worked. I'm looking for someone just ugly enough not to leave me for an air hostess, a stripper or one time a coal miner. I also enjoy knitting and playing the banjo. It's an instrument I made myself out of a banjo and a violin. I'm very handy. Please send responses to greatfunmum@hotmail.com

IN MEMORIAM

We would like to pay tribute
to Nadia our
ten-foot Nile crocodile

who sadly passed away shortly
after arriving in the UK during preparation for
the production. When she arrived in the UK from her native
country of Kenya she was loaded onto the back of a large wagon and driven
through the night towards the rehearsal room when Nadia arrived at Cornley
and we tried to feed her the alarm clock (which we had covered in Water Buffalo
meat). Unfortunately the sedatives she had been given wore off and she burst
free from her shipping crate and from the vehicle containing her hospitalising all
three of her handlers and Mr Harwood esteemed head of Design Technology
at Cornley University.

Nadia roamed the Cornley quad for four hours while students and lecturers
hid inside the classrooms and locked the doors. Nadia was finally killed by
armed police at 4:36pm outside the Cornley Science Block.

Our thoughts are with Nadia and all those injured on that dreadful
day at Cornley University. The role of the crocodile will now be played
by Max Bennett.



MIDNIGHT MEDITATION WITH ROBERT GROVE

JOIN ME ON A JOURNEY INTO YOU...

I HOLD THE KEY TO ENLIGHTENMENT...

IN SIX SESSIONS I GUARANTEE
YOU WILL FIND HAPPINESS...

EMAIL ROBERTGOODACTOR@HOTMAIL.COM
FOR MORE DETAILS

HAPPINESS IS NOT GUARANTEED
FEES ARE NON-REFUNDABLE





SNEHAL DESAI Artistic Director | **MEGHAN PRESSMAN** Managing Director/CEO
DOUGLAS C. BAKER Producing Director | **GORDON DAVIDSON** Founding Artistic Director

KEVIN MCCOLLUM KENNY WAX STAGE PRESENCE LTD. CATHERINE SCHREIBER
GREENLEAF PRODUCTIONS BARD THEATRICALS JAMIE DEROY MISCHIEF
WENDY FEDERMAN/RICHARD BATCHELDER JACK LANE/JOHN YONOVER TULCHIN BARTNER PRODUCTIONS
DEAN ROTH/42ND.CLUB MARTIAN ENTERTAINMENT/DANIEL RADFORD TOM SMEDES & PETER R. STERN/THOMAS S. PERAKOS
KEN AND ROSEMARY WILLMAN/NICOLE EISENBERG LAMS PRODUCTIONS/AYAL MIODOVNIK LUCAS MCMAHON

PRESENT
A MISCHIEF PRODUCTION OF
**PETER PAN GOES
WRONG**

BASED ON THE PLAY *PETER PAN* BY JM BARRIE
BY HENRY LEWIS, JONATHAN SAYER & HENRY SHIELDS

STARRING
RYAN VINCENT ANDERSON MATTHEW CAVENDISH HARRY KERSHAW
CHRIS LEASK HENRY LEWIS ELLIE MORRIS CHARLIE RUSSELL JONATHAN SAYER
HENRY SHIELDS GREG TANNAHILL NANCY ZAMIT
STEPHEN JAMES ANTHONY BLAIR BAKER BARTLEY BOOZ BRENNAN STACKER

SCENIC DESIGN COSTUME DESIGN LIGHTING DESIGN
SIMON SCULLION ROBERTO SURACE MATTHEW HASKINS

SOUND DESIGN ORIGINAL MUSIC WIG & MAKE UP DESIGN
ELLA WAHLSTRÖM RICHARD BAKER & ROB FALCONER TOMMY KURZMAN

PRODUCTION STAGE MANAGER TECHNICAL SUPERVISION UK PRODUCTION MANAGER COMPANY MANAGER
ADAM JOHN HUNTER HUDSON THEATRICAL ASSOCIATES DIGBY ROBINSON DANIEL HOYOS

GENERAL MANAGEMENT ADVERTISING & MARKETING PRESS ASSOCIATE PRODUCER
THEATER MATTERS THE PEKOE GROUP BONEAU/BRYAN-BROWN JACK EIDSON
JOHN E. GENDRON

DIRECTED BY
ADAM MEGGIDO

PETER PAN GOES WRONG IS PRESENTED BY ARRANGEMENT WITH MISCHIEF WORLDWIDE LTD.
AND GREAT ORMOND STREET HOSPITAL CHILDREN'S CHARITY.

AUGUST 8 – SEPTEMBER 10, 2023 AHMANSON THEATRE

CAST



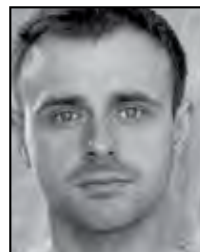
**RYAN VINCENT
ANDERSON**



**MATTHEW
CAVENDISH**



HARRY KERSHAW



CHRIS LEASK



HENRY LEWIS



ELLIE MORRIS



CHARLIE RUSSELL



JONATHAN SAYER



HENRY SHIELDS



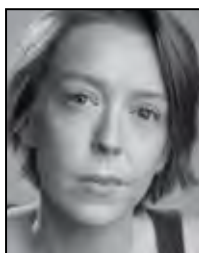
GREG TANNAHILL



NANCY ZAMIT



**STEPHEN JAMES
ANTHONY**



BLAIR BAKER



BARTLEY BOOZ



**BRENNAN
STACKER**

Latecomers will be seated at the discretion of management. Patrons with disabilities: wheelchair seating is available in a variety of theatre locations. When ordering tickets, please indicate any special needs. For our hearing-impaired guests, the theatre is equipped with listening devices; please contact an usher for assistance.

CAST

(in order of appearance)

Trevor.....CHRIS LEASK
Chris HENRY SHIELDS
Robert HENRY LEWIS
Max..... MATTHEW CAVENDISH
Francis..... HARRY KERSHAW
Sandra.....CHARLIE RUSSELL
Dennis JONATHAN SAYER
Annie..... NANCY ZAMIT
GillRYAN VINCENT ANDERSON
Jonathan GREG TANNAHILL
Lucy..... ELLIE MORRIS

UNDERSTUDIES

Understudies never substitute for listed performers
unless a specific announcement is made at the time of the performance.

for Trevor—STEPHEN JAMES ANTHONY, BRENNAN STACKER;
for Chris—STEPHEN JAMES ANTHONY, BARTLEY BOOZ, HARRY KERSHAW;
for Robert—RYAN VINCENT ANDERSON, STEPHEN JAMES ANTHONY;
for Max—STEPHEN JAMES ANTHONY, BARTLEY BOOZ, CHRIS LEASK;
for Francis—RYAN VINCENT ANDERSON, BLAIR BAKER;
for Sandra—ELLIE MORRIS, BRENNAN STACKER;
for Dennis—RYAN VINCENT ANDERSON, BARTLEY BOOZ, MATTHEW CAVENDISH;
for Annie—BLAIR BAKER, BRENNAN STACKER;
for Gill—BLAIR BAKER, BRENNAN STACKER;
for Jonathan—STEPHEN JAMES ANTHONY, BARTLEY BOOZ, HENRY SHIELDS;
for Lucy—BLAIR BAKER, BRENNAN STACKER.

There will be one 15-minute intermission.

WHO'S WHO

RYAN VINCENT ANDERSON (*Gill, he/him*). Broadway debut. Off-Broadway/National Tour: *The Play That Goes Wrong*. TV: *Bull* (CBS), *The Crowded Room* (Apple TV), *Law & Order: SVU* (NBC), *FBI* (CBS). Thanks to my parents for not flipping out when I switched from architecture to acting. Thanks Jim Flynn Agency. Carnegie Mellon University. CalArts MFA. ryanvanderson.com @ryanvanderson

MATTHEW CAVENDISH (*Max*). Training: LAMDA. Theatre: *Boris III* (Pleasance), *Groan Ups* (U.K. tour), *Jeeves and Wooster: In Perfect Nonsense* (U.K. tour), *Showstopper! The Improvised Musical* (West End), *The Comedy About a Bank Robbery* (West End), *The Midnight Gang* (Chichester), *The Play That Goes Wrong* (Broadway/West End), *Peter Pan Goes Wrong* (West End). TV: *A Christmas Carol Goes Wrong* (BBC).

HARRY KERSHAW (*Francis*) trained at RADA. Theatre credits include *Good Luck, Studio* (Mischief); *What's New Pussycat?* (Birmingham Rep); *Boris III* (Edinburgh); *The Madness of George III* (Nottingham Playhouse); *This House* (NT/Headlong); *Peter Pan Goes Wrong* (original cast); *The Play That Goes Wrong* (Duchess); and *One Man, Two Guvnors* (West End). TV includes *Jerk*, *Omid Djalili's Little Cracker*, *Cuckoo*, *Wallander*, and *Endeavour*. Film includes *Exhibition*, *Unrelated*, *Skyfall*, and *Great Expectations*.

CHRIS LEASK (*Trevor, he/him*). Theatre: *Good Luck, Studio* (Mercury); *The Comedy About a Bank Robbery* (Criterion); *I Need to Vent* (Vaults); *The Play That Goes Wrong* (Duchess); *Love Your Soldiers* (Sheffield). TV & Film: *The Ark*, *The Goes Wrong Show*, *We Hunt Together*, *Casualty*, *A Christmas Carol Goes Wrong*, *Nutritiously Nicola*, *Peter Pan Goes Wrong*, *Call the Midwife*, *PhoneShop*, *The Javone Prince Show*, *Frankie*, *Breathless*.

HENRY LEWIS (*Robert, he/him*) is an Olivier Award-winning writer and actor. Artistic director of Mischief. Broadway: *The Play That Goes Wrong*. West End: *Mind Mangler: Member of the Tragic Circle*, *Austentatious*, *Magic Goes Wrong*, *Groan Ups*, *Mischief Movie Night*, *The Comedy About a Bank Robbery*, *Peter Pan Goes Wrong*. TV: *The Goes Wrong Show*, *Riddulous*. Henry's work has been produced in over 40 countries worldwide. @henrywlewis

ELLIE MORRIS (*Lucy*) trained at LAMDA and is a member of Mischief Theatre. Theatre credits: *Spike*, *The Play That Goes Wrong*, *Mischief Movie Night*, *Rotterdam*, *The Comedy About a Bank Robbery*, *Peter Pan Goes Wrong*, and *Spring Awakening*. Television credits: *The Goes Wrong Show*, *A Christmas Carol Goes Wrong*, *Peter Pan Goes Wrong*.

CHARLIE RUSSELL (*Sandra, she/her*). Co-founder and creative associate at Mischief. Training: LAMDA. Credits include *The Play That Goes Wrong* (West End, Broadway), *Peter Pan Goes Wrong* (West End, BBC1), *The Comedy About a Bank Robbery* (West End), *Groan Ups* (West End), and *The Goes Wrong Show* (BBC1). Writer and performer: *Charlie Russell Aims to Please* (Edinburgh Fringe, Off West End). Improviser: *Mischief Movie Night*, *Austentatious*, *Yes Queens*.

JONATHAN SAYER (*Dennis*). An Olivier Award-winning writer, actor, producer, and company director, Jonathan's Mischief credits include *The Play That Goes Wrong*, *The Comedy About a Bank Robbery*, *Mind Mangler*, *Mischief Movie Night*, and *The Goes Wrong Show*. Jonathan is a Mousetrap Theatre Projects trustee and Ashton United Football Club co-chair. His first book, *Nowhere to Run*, releases in 2023. @jonathansayer1

HENRY SHIELDS (*Chris*) is an Olivier Award-winning writer and actor known for *The Play That Goes Wrong*; *The Comedy About a Bank Robbery*; *Magic Goes Wrong*; *Groan Ups*; *Good Luck, Studio*; *Mind Mangler: Member of the Tragic Circle*; *Peter Pan Goes Wrong*; *A Christmas Carol Goes Wrong*; *The Goes Wrong Show*; *The Royal Variety Performance*; and *Children in Need*.

GREG TANNAHILL (*Jonathan, he/him*). Training: LAMDA. Theatre includes *Good Luck, Studio*; *The Play That Goes Wrong*; *The Comedy About a Bank Robbery*; *Peter Pan Goes Wrong*; *A Midsummer Night's Dream*; *Beyond Beauty*; *Events While Guarding the Bofors Gun*. Television includes *The Goes Wrong Show*, *A Christmas Carol Goes Wrong* and *Peter Pan Goes Wrong* (BBC). Associate director: *The Play That Goes Wrong* (2018 U.S. tour).

NANCY ZAMIT (*Annie*) is a co-founder of Mischief. She originated roles in/co-created: *The Play That Goes Wrong*, *Magic Goes Wrong* (WOS Award nom.), *Peter Pan Goes Wrong*, *The Comedy About a Bank Robbery*, *Groan Ups* and *Mischief Movie Night*. TV: *The Goes Wrong Show*, *Comic Relief*, *In Conversation With a Goddess*, *Brunch Bitches*. This run is dedicated to Herb & Chris. IG: @nancy_zamit

STEPHEN JAMES ANTHONY (*Understudy*). Broadway: *War Horse*, *Skylight*. Off-Broadway: *Behind the Sheet* (EST), *The Grand Manner* (LCT). Regional: *Murder on the Orient Express* (Ogunquit Playhouse); *The Guard* (City Theatre); *Barefoot in the Park* (Cape May Stage); *Peter and the*

Starcatcher, *Nicholas Nickleby* (OST). Television: *FBI: Most Wanted*, *The Loudest Voice*, *Blue Bloods*, *Gotham*, *Billions*. stephenjamesanthony.com

BLAIR BAKER (*Understudy, they/she*) is an actor, director, and writer. Theatre: *The Humans* (Broadway, Roundabout Theatre Company), *The Play That Goes Wrong* (First National Tour, Off-Broadway), *Goldie, Max & Milk* (59e59), *Oleanna* (Broadway, Mark Taper Forum, Bristol Riverside Theater), title role in *Hvmlet* (SheNYC), and *The Soap Myth* (opposite Ed Asner). TV/Film: *Bull*, *The Ghost of Christmas Always* (Hallmark) *Billions*, *Blue Bloods*, *Harlem*. Upcoming: *Jules* (starring Sir Kingsley), *The Perfect Couple*, and audio series *Previa: Tech Heist* for Audible/Sonoro Media. blairbaker.info For Em, Mom, and Dad.

BARTLEY BOOZ (*Understudy*). Theatre includes Off Broadway: *I'm Revolting* (Atlantic Theater Company); *Hamlet, Oresteia* (Park Avenue Armory); and *The Play That Goes Wrong* (New World Stages). Film and television includes *The Good Fight* (CBS), *Bull* (CBS), *Happy* (Syfy), *TURN: Washington's Spies* (AMC) and *Here and Now* (Tribeca Film Festival). BFA acting: University of Cincinnati College-Conservatory of Music.

BRENANN STACKER (*Understudy, she/her*). Theatre includes *The Play That Goes Wrong* (Broadway in Chicago), Chicago Shakespeare Theater, Steppenwolf Theatre Company, TheatreSquared and Williamstown Theatre Festival. TV/film includes *Chicago Med*, *Sirens*, *Dark Matter*, and *Banana Season*. Training: Tufts University, O'Neill National Theater Institute, Russian State Institute of Performing Arts, Groundlings, The School at Steppenwolf. @brenstacker

HENRY LEWIS, JONATHAN SAYER, HENRY SHIELDS (*Authors*) met while training at LAMDA. Their first show, *The Play That Goes Wrong* (Best New Comedy, Olivier Awards), opened in the West End in 2014 and on Broadway in 2017. Other credits include *The Comedy About a Bank Robbery*, *Magic Goes Wrong* (co-created with Penn & Teller), *Groan Ups* and the BBC series *The Goes Wrong Show*. Their work has appeared in over 40 countries worldwide.

JM BARRIE (*Original Story*) was born in Kirriemuir, Scotland, in May 1860. When their parents died, Barrie became guardian to three boys whom he had met in Kensington Gardens in 1897. The boys are thought to be the inspiration for the creation of Peter Pan. *Peter Pan* first took place in 1904 and remarkably Barrie gifted the copyright to Great Ormond Street Hospital for Children in London in 1929, later extended for perpetuity in the U.K. JM Barrie died in 1937.

GREAT ORMOND STREET HOSPITAL. Every day, around 600 children and young people from across the U.K. arrive at Great Ormond Street Hospital in London. Every day, doctors and nurses battle the most complex illnesses, and clinicians and researchers develop pioneering medical breakthroughs that will leave a legacy for children across the world. This extraordinary hospital has always depended on charitable support. Donations to Great Ormond Street Hospital Children's Charity fund vital new facilities, specialist equipment, life-saving research and patient & family support programmes. gosh.org

ADAM MEGGIDO (*Director, he/him*). Co-creator/director of the Olivier Award-winning *Showstopper! The Improvised Musical*. Adam also directed *Magic Goes Wrong* (Olivier Award nominee) for Mischief Theatre. He wrote and directed new musical *Burlesque* (winner of four Off-West End Theatre Awards) and has composed songs for *Britain's Got Talent*. He is the author of *Improv Beyond Rules*. @adammeiggido adammeiggido.com

FRED GRAY (*Associate Director*) is a RADA BA acting graduate and spent several years in the West End with *The Play That Goes Wrong*. He started his Mischief journey as an understudy eight years ago but has since been associate director in multiple productions in the U.K., Australia, Italy, and Canada.

SIMON SCULLION (*Scenic Designer*). London West End includes *Peter Pan Goes Wrong*, *Showstopper!*, and *Volcano*. Other U.K. work includes *The Father*, *Quatermaine's Terms*, *Out There on Fried Meat Ridge Road*, *Killer Joe*, *Piaf*, and *What We Did to Weinstein*. Film work includes *Bill* for BBC FILMS/BFI. Simon trained at Wimbledon School of Art and was a finalist on the Linbury Prize for Theatre Design.

ROBERTO SURACE (*Costume Designer*). Broadway: *The Play That Goes Wrong* (Lyceum & NWS). West End/U.K. Tours: *Magic Goes Wrong* (Vaudeville/Apollo), *Groan Ups* (Vaudeville), *The Comedy About a Bank Robbery* (Criterion), *Peter Pan Goes Wrong* (Apollo), *The Play That Goes Wrong* (Duchess). U.S tour: *The Play That Goes Wrong*. International: *The Play That Goes Wrong*, *Peter Pan Goes Wrong*, *The Comedy About A Bank Robbery*. TV: *Peter Pan Goes Wrong*, *A Christmas Carol Goes Wrong*, *The Goes Wrong Show* (BBC1). In memory of his late Mom, Silvana. @robro77

MATT HASKINS (*Lighting Designer*). Theatre: *Peter Pan Goes Wrong* (West End); *The Clinic* (Almeida); *The Empress* (RSC); *Mary, Fever Syndrome, I And You, Cost of Living* (Hampstead Theatre); *Hakawatis* (Globe); *The City and the Town*, *Nina* (Riksteatern); *Fair Play* (Bush); *Hobson's Choice*

(Royal Exchange). Opera: *Glare*, *The Virtues of Things* (Royal Opera House); *Coraline* (Barbican); *The Turn of the Screw* (Opera North); *Sukanya* (Royal Festival Hall). matthaskins.com @matthaskins_lighting

ELLA WAHLSTRÖM (*Sound Designer*). Her recent credits include *The Unfriend* (Criterion, West End), *Ava: The Secret Conversations* (Riverside Studios), *Dogs of Europe* (Barbican Centre), *A Christmas Carol* (Alexandra Palace), *The Lemon Table* (Michael Grandage Company), *Noises Off* (Garrick, West End), *Letter to a Man* (Robert Wilson and Mikhail Baryshnikov). She's also the sound designer of Esa-Pekka Salonen's Cello Concerto written for Yo-Yo Ma.

RICHARD BAKER (*Co-Composer*) is a composer, music director and improviser. He has worked with Mischief since 2013 including for *Good Luck*, *Studio*, and *Mischief Movie Night*. As an MD Richard has worked in a number of London theatres including the Palace, the Vaudeville and Charing Cross. Other recent compositions include the new musical *Tasting Notes* and for the play *Indebted to Chance*.

ROB FALCONER (*Co-Composer*) is an actor, musician, and writer. Amongst other credits, he originated the role of Trevor in *The Play That Goes Wrong* and *Peter Pan Goes Wrong*, also composing music for both. You may recognize his voice from video games. He also only has a 60-word limit for this, so before that runs out, he would like to thank—

TOMMY KURZMAN (*Wig/Hair & Makeup Design*). Broadway: *Pictures From Home*, *The Collaboration*, *Macbeth*, *Mrs. Doubtfire*, *All My Sons*, *True West*, *Saint Joan*, *My Fair Lady*, *The Little Foxes*, *Long Day's Journey Into Night*, *Bright Star*, *The King and I* and *Fiddler on the Roof*. Off-Broadway: *Little Shop of Horrors* (Westside Theatre), *Roundabout*, MCC, Atlantic, The New Group, The Public, MTC, NWS. IG: @TommyKurzmanWigs

HUDSON THEATRICAL ASSOCIATES (*Technical Supervisor*). Over 100 Broadway productions and tours. Recent: *New York, New York*; *Sweeney Todd*; *A Doll's House*; *Pictures From Home*; *Ohio State Murders*; *Hadestown*; *Hamilton*; *Aladdin*. HTA is a member of Neil A. Mazzella's Hudson family which includes Hudson Scenic Studios, Sean Gorski, Anastasia Olowin, Sam Ellis, Brianna Stankiewicz, Brianne Tabak, Bridget Van Dyke, and Irene Wang.

ADAM JOHN HUNTER (*Production Stage Manager*). PSM on the Rialto for *Mrs. Doubtfire*, *The Encounter*, *Bronx Bombers*, *Rock of Ages*, *Sweeney Todd...*, and *A Catered Affair*, also the world premieres of *The Exorcist*, *Moulin Rouge!*, and

August Rush. He was PSM on over 20 Encores! He lives in Red Hook, Brooklyn, with his wife and two kids, who are waaaaay smarter than he is.

CHRISTINE D'AMORE (*Stage Manager*). Broadway: *Mrs. Doubtfire*, *The Color Purple*, *Les Misérables*, 20 productions at New York City Center Encores! World premieres: *August Rush*, *Moulin Rouge!* and *The Last Supper*. Other productions at The Public Theater, Shakespeare in the Park, Lincoln Center Theater, Signature Theatre, Berkeley Rep, and more.

THEATER MATTERS (*General Management*) manages live entertainment globally. It is represented on Broadway and across North America by *SIX*. Recent productions include *The Play That Goes Wrong*, *Mrs. Doubtfire*, *The Devil Wears Prada*, and *The Notebook*.

KEVIN MCCOLLUM (*Producer*) has also produced some good shows. He has never been a pirate and is in full possession of his shadow.

KENNY WAX (*Producer*) has *SIX* the musical on Broadway and in the West End. Also in the West End and Off-Broadway *The Play That Goes Wrong*. He has produced Olivier Award-winning productions of *Top Hat*, *Once on This Island*, and *The Worst Witch* in the U.K. For three years prior to lockdown, he was the president of the Society of London Theatre (SOLT).

STAGE PRESENCE LTD. (*Producer*) is delighted to be part of the team presenting Mischief comedies in New York and across the United States.

CATHERINE SCHREIBER (*Producer*). Five-time Tony and Olivier award winner. *Life of Pi*, *The Play That Goes Wrong* (Off-Broadway). Recently: *Company*; *The Lion, the Witch, and the Wardrobe* (U.K.). Past: *Death of a Salesman*, *The Lehman Trilogy*, *A Christmas Carol*, *Angels in America*, *The Inheritance*, *The Play That Goes Wrong*, *Network*, *Peter and the Starcatcher*, *The King's Speech*, *Clybourne Park*. Nine Tony nominations. Five Olivier nominations. Catherine brought *The Scottsboro Boys* to London (seven Olivier nominations).

GREENLEAF PRODUCTIONS (*Co-Producer*). We are staking our entire financial future and reputation on the execution of this performance. We have only the strongest belief in the quality and competence of the Cornley Polytechnic Drama Society, and know they will deliver a flawless production, this time. GreenleafProductions.com

BARD THEATRICALS (*Co-Producer*). Annette Jolles, Laurence Holzman, David Stern, Jim van Bergen, Lara Holzman, Linda Hamil. Broadway: *Jagged Little Pill*, *Mrs.*

Doubtfire, The Play That Goes Wrong, Fiddler on the Roof, China Doll, The Scottsboro Boys, The Anarchist, Looped. Off-Broadway: *Stranger Sings*. Also Museum of Broadway.

JAMIE deROY (Co-Producer). Ten Tony Awards. Current: *Leopoldstadt; Life of Pi; Parade; Good Night, Oscar; New York, New York; The Play That Goes Wrong; The Piano Lesson; Death of a Salesman*. Film: *Broadway: Beyond the Golden Age*. Tours: *Tina...; Mockingbird; Ain't Too Proud; Pretty Woman*.

MISCHIEF (Producer) has grown from a fringe British theatre group to a multi-award-winning global comedy sensation. *The Play That Goes Wrong* is onstage in London and New York and licensed around the world. Other productions include *The Comedy About a Bank Robbery, Magic Goes Wrong*, and *Mind Mangler*. Onscreen work includes BBC series *The Goes Wrong Show*. Mischief develops new work for theatre, TV, film, and beyond. MischiefComedy.com.

FEDERMAN BATCHELDER PRODUCTIONS (Co-Producer). **Wendy Federman**: thirteen Tony, two Olivier, eleven Drama Desk, three GLAAD awards. Ellis Island Medal of Honor recipient. Upcoming film: *Lilly*. **Richard Batchelder**: *The Inheritance* (Tony); 2023 shows: *The Piano Lesson; Pictures from Home; Parade; New York, New York*; Folger Shakespeare Library board.

JACK LANE (Co-Producer). Broadway: *Peter and the Starcatcher, Fun Home* (Tony), *The Humans* (Tony), *The Play That Goes Wrong, The Prom, A Christmas Carol, Company* (Tony), & *Juliet*.

JOHN YONOVER (Co-Producer). Invested in more than 55 productions Broadway, Chicago & London including *The Lehman Trilogy* (Tony) and *Six*. Soon in London, *What's New Pussycat* and *Bleak Expectations*.

TULCHIN BARTNER PRODUCTIONS (Co-Producer) is currently represented on Broadway with *Moulin Rouge!* West End: *Cabaret, To Kill a Mockingbird, The Book of Mormon*.

DEAN ROTH (Co-Producer). *The Play That Goes Wrong, Macbeth* (Alan Cumming), *Clinton the Musical*, and investor in 47 productions on and off Broadway and in the U.K.

42ND.CLUB (Co-Producer) is a network of Broadway producers and investors. Producers: Phil Kenny, Claire Kenny, Winston Hatta, and Ken Kades.

MARTIAN ENTERTAINMENT (Co-Producer) is a Tony Award-winning theatrical production and general management company owned by Carl D. White and Gregory Rae.

DANIEL RADFORD (Co-Producer). Dedicating my efforts to my late producing partner and dear friend, Jacki Florin, who loved to laugh more than anything!

TOM SMEDES & PETER STERN (Co-Producer). Tony & Olivier award producers with Heather Shields including *Cabaret* U.K. (Olivier), *A Christmas Carol* (five Tonys), *Bandstand, Farinelli, The Prom*, and *Pippin* (Tony). tomsmedes.com

THOMAS S. PERAKOS (Co-Producer). Participation in *Peter Pan Goes Wrong* is made in loving memory of his beloved mother in remembrance of love and fun in theatre.

KEN AND ROSEMARY WILLMAN (Co-Producer). Over 20 productions including *Come From Away* (Olivier) and *Hadestown* (Tony). Thanks, Ron, for flying to Neverland with us.

NICOLE EISENBERG (Co-Producer). Broadway: *Into the Woods, Indecent*. MCC board of directors, emeritus GLAAD national board of directors. With Love to my Family—Stephen, Noah and Evan.

LAMS PRODUCTIONS (Co-Producer). Tony & Oliver-nominated producers Bradley Reynolds and David Siesko are currently working on *Mrs. Doubtfire* (London) and *The Notebook*.

AYAL MIODOVNIK (Co-Producer). CEO of Bright Lights Big City Tours, a boutique travel company offering customized tours, masterclasses and unparalleled access to Broadway and NYC.

LUCAS MCMAHON (Producer). Current: Broadway smash *SIX*. Other Broadway/national tour: *The Play That Goes Wrong, Mike Birbiglia: The New One, Something Rotten!, Hand to God, Mrs. Doubtfire* (and upcoming West End). Off-Broadway: *Leo Reich: Literally Who Cares?! His personal credits include getting it wrong for 29 years until he met his incredible wife, Ellie, who makes everything right.*

CENTER THEATRE GROUP

SNEHAL DESAI (*Artistic Director, he/him*). Prior to being named Center Theatre Group's new Artistic Director, Snehal Desai was the Producing Artistic Director of East West Players, designated an American Cultural Treasure by the Ford Foundation and the nation's largest and oldest Asian American theatre company. A Soros Fellow and the recipient of a Tanne Award, Desai was in the Inaugural Class of Theatre Communications Group's (TCG) "Spark" Leadership Program and the Inaugural Recipient of the Drama League's Classical Directing Fellowship. While at East West Players, Desai produced and directed the three highest grossing and most attended shows in EWP's fifty-seven-year history including the post-Broadway premiere of *Allegiance* starring George Takei. During his tenure at East West Players, Desai led co-productions with Center Theatre Group, Pasadena Playhouse, Rogue Artists Ensemble, the LA LGBT Center, Robey Theater Company, The Fountain Theatre, API Rise, the Japanese American Cultural and Community Center (JACCC) and TAIKOPROJECT, to name a few. East West Players' collaboration with singer/songwriter Daniel Ho was nominated for a 2022 Grammy Award. As an artistic leader, Snehal has sought to raise awareness on social issues that affect Angelenos through impactful and empowering storytelling. Desai has served on the boards of the Consortium of Asian American Theaters and Artists (Caata), Theatre Communications Group (TCG), and Los Feliz Charter School for the Arts (LFCSA). He currently serves on the board of the National Alliance for Musical Theatre (NAMT); is a member of the Lincoln Center Directors Lab; and was a literary fellow with London's Royal Shakespeare Company. Most recently, Snehal was on the faculty of USC's graduate program in Arts Leadership where he taught Executive Arts Leadership. He is a graduate of Emory University and the Yale School of Drama.

MEGHAN PRESSMAN (*Managing Director/CEO, she/her*) joined Center Theatre Group in 2019. Previously, she served as Managing Director of Woolly Mammoth Theatre Company (D.C.), Director of Development for Signature Theatre (N.Y.), and Associate Managing Director of Berkeley Rep. She is a graduate of Yale School of Drama/ Yale School of Management, and serves as a mentor in the Theater Management program. Meghan has served as the Vice-Chair for the Theatre Communications Group Board of Directors, and is a member of the Broadway League.

DOUGLAS C. BAKER (*Producing Director, he/him*) joined Center Theatre Group in 1990. Doug is an active member of the Broadway League, the Independent Presenters Network (IPN), and is a proud member of the Association of Theatrical Press Agents and Managers (ATPAM). In 2013, Doug received the Broadway League's prestigious Outstanding Achievement in Presenter Management Award.

GORDON DAVIDSON (*Founding Artistic Director*) led the Taper throughout its first 38 seasons, guiding over 300 productions to its stage and winning countless awards for himself and the theatre—including the Tony Award for theatrical excellence, Margo Jones Award, The Governor's Award for the Arts, and a Guggenheim fellowship. *The Kentucky Cycle* and *Angels in America (Part One)* won the Pulitzer in consecutive years and, in 1994, three of the four plays nominated for the Tony Award for Best Play were from the Taper (*Angels in America* won). In 1989, Gordon took over the Ahmanson and, in 2004, he produced the inaugural season in the Kirk Douglas Theatre.

CENTER THEATRE GROUP, one of the nation's preeminent arts and cultural organizations, is Los Angeles' leading not-for-profit theatre company, which, under the leadership of Artistic Director Snehal Desai, Managing Director / CEO Meghan Pressman, and Producing Director Douglas C. Baker, programs seasons at the 736-seat Mark Taper Forum and 1,600 to 2,100-seat Ahmanson Theatre at The Music Center in Downtown Los Angeles, and the 317-seat Kirk Douglas Theatre in Culver City. In addition to presenting and producing the broadest range of theatrical entertainment in the country, Center Theatre Group is one of the country's leading producers of ambitious new works through commissions and world premiere productions and a leader in interactive community engagement and education programs that reach across generations, demographics, and circumstances to serve Los Angeles. Founded in 1967, Center Theatre Group was led by Founding Artistic Director Gordon Davidson until 2005 when Michael Ritchie was the artistic director until his retirement in 2021; Snehal Desai was appointed the organization's next artistic director in 2023. Center Theatre Group has produced more than 700 productions across its three stages, including such iconic shows as *Zoot Suit*; *Angels in America*; *The Kentucky Cycle*; *Biloxi Blues*; *Twilight: Los Angeles, 1992*; *Children of a Lesser God*; *Curtains*; *The Drowsy Chaperone*; *9 to 5: The Musical*; and *Bengal Tiger at the Baghdad Zoo*. **CenterTheatreGroup.org**

ADDITIONAL STAFF FOR *PETER PAN GOES WRONG*

GENERAL MANAGEMENT THEATER MATTERS John E. Gendron

Associate General Manager.....Ashley Berman

COMPANY MANAGER Daniel Hoyos

Assistant Company Manager.....Ben Otten

TECHNICAL SUPERVISOR HUDSON THEATRICAL ASSOCIATES Neil Mazzella Sean Gorski Anastasia Olowin Sam Ellis Brianna Stankiewicz Brianne Tabak Bridget Van Dyke Irene Wang

PRESS REPRESENTATIVE BONEAU BRYAN-BROWN

Adrian Bryan-Brown
Jackie Green Angela Yamarone

ADVERTISING/MARKETING/SOCIAL MEDIA THE PEKOE GROUP Amanda Pekoe Jessica Ferreira Christopher Lueck Jenny Dorso Connor Santos Kiernan Matts

LEGAL COUNSEL LEVINE PLOTKIN & MENIN, LLP Loren Plotkin Conrad Rippy Susan Mindell Daniel Watkins Emily Erstling Kevin Hess Cris Criswell

CHOREOGRAPHY Nancy Zamit Dave Hearn

Associate Director.....Fred Gray
Production Stage Manager.....Adam John Hunter
Stage Manager.....Christine D'Amore
Fight Captain.....Greg Tannahill
U.S. Casting.....Stephen Kopel/C12 Casting
Associate Scenic Designer.....Erica Hemminger
Associate Costume Designer.....Lisa Zinni
Assistant Costume Designer.....Abby Hahn
Associate Lighting Designer.....Joel Shier
Assistant Lighting Designer.....Kat Zhou
Associate Sound Designers.....Chris Cronin,
Josh Liebert, Phillip Peglow
U.K. Technical Design Consultant.....Alan Bartlett
U.K. Stage Management Consultant.....Tom Platt
U.K. Production Manager.....Digby Robinson
Production Carpenter.....Richard Force
Advance Carpenter.....Mike Eickmeyer
Production Electrician.....Brian Messina
Advance Electrician.....David Trovarelli
Head Electrician.....Rachel Fraley
Moving Light Programmer.....Brad Gray
Production Sound.....Dillon Cody
Advance Sound.....John Sibley
Audio Engineer.....Marisa Barnes
Production Properties.....Emiliano Pares
Production Properties Associate.....Richard Klinger
Special Effects Consultant.....Bohdan Bushell
Head Props.....Olivia Wells
Advance Wardrobe.....Margaret Lazenby
Wardrobe Supervisor.....Tyler Carlton Williams
Covid Safety Supervisor.....Emma Brock
U.K. Marketing.....Harry Lockyear
for Mischief Worldwide Ltd.
U.K. Press.....Jo Allan PR
U.K. Social Media Management.....Rona Kelly
U.K. Photography.....Matt Crockett, Danny Kaan
U.K. Videography.....Mark Yeoman, Eliza Larkey
U.K. Trailer.....Umbrella Rooms
Ticketing Manager.....Annie Van Nostrand
People and Culture Partner.....Tiffanie Claude
The Pekoe Group Staff.....Ryan Meitzler, Briana Lynch, Dounia Benabdallah,
Damien Nguyen, Kelly Ganning,
David Blaakman, Nicole Hatcher
Boneau/Bryan-Brown Staff.....Chris Boneau, Michelle Farabaugh, Amy Kass,
Faith Maciolek, Scott Munson, Heath Schwartz,
Susanne Tighe, Kenya Williams

Accounting.....Withum Smith + Brown, PC
Controller.....Galbraith & Co./Jeffrey Vincent
Payroll Services.....Checks and Balances Payroll
Banking.....Flagstar Bank/Margaret Monigan, Stephanie Krauss
Insurance.....The Arts Insurance Program, LLC/Bob Middleton,
Meghan Coleman, Toni Preto
Travel Agent.....The A Team/Tzell Travel Services
Housing Coordination.....Road Rebel Global
Physical Therapy.....Fusion Arts Physical Therapy/Karen Moran, PT
Production Photographer.....Jeremy Daniel
Merchandise.....Creative Goods
Visa Consultant.....Wiskoff Law, PLLC/Carly Wiskoff

ALCHEMATION Kevin McCollum Lucas McMahon John Ban Jack Eidson Annie Van Nostrand Evan Shalat Lyndsay Borko Rachel Bonner Breanne Jackson

KENNY WAX LTD. Kenny Wax Lettie Graham Lauri Cryan Sarah Whiteside Katy Keggie Fiona Taylor Amanda Sutton Jennifer Amey Gemma Prince

MISCHIEF WORLDWIDE, LTD. Jo Danvers Jessica Hall Harry Lockyear Minoli De Silva

CREDITS
Scenery built, painted and electrified by Hudson Scenic Studios. Automation and show control featuring Hudson Motion Control by Hudson Scenic Studios. Lighting equipment by PRG Lighting. Sound equipment by Sound Associates. Props provided by BrenBri Properties. Flying effects by Flying by Foy. SFX by J&M Special Effects. Select costumes executed by Arel Studio. Select costumes executed by Timberlake Studios Inc. Tree costume executed by Carfagno Productions. Select pieces/alterations by Eve Guttman and Carmella Simonetti. Painting by Jeff Fender Studio. Distressing by Michael McDonald. Costume studio admin by Meredith Prouty-Due.

Fellowship in partnership with the Black Theatre Coalition

SPECIAL THANKS
Matt DiCarlo, Martian Entertainment, Jere Harris, Peter Fitzgerald, Arts Club Theatre Company (Vancouver), The Citadel Theatre, Dave Hearn, Tom Platt, Digby Robinson, Mike Bodie, Bryony Corrigan, Joshua Elliott, Niall Ransome, Hilary Strong, Charlotte Johnson, Sacha Brooks

To learn more about the production,
please visit PanGoesWrongBway.com
Follow us on Twitter, Facebook and Instagram:
[@PeterPanBway](https://www.instagram.com/PeterPanBway)



The actors and stage managers employed in this production are members of Actors' Equity Association, the union of professional actors and stage managers in the United States.



The House Managers, Press Agents and Company Managers employed in this production are represented by the Association of Theatrical Press Agents & Managers.



The following employees are represented by the International Alliance of Theatrical Stage Employees, Moving Picture Machine Operators, Artists and Allied Crafts of the United States, its Territories and Canada, AFL-CIO, CLC: Stage Crew Local 33; Treasurers and Ticket Sellers Local 857; Wardrobe Crew Local 768; Make-up Artists and Hair Stylists Local 706.



The Director is a member of the Society of Stage Directors and Choreographers, Inc., an independent national labor union.



United Scenic Artists represents the designers and scenic painters for the American Theatre.



This production is produced by a member of The Broadway League in collaboration with our professional union-represented employees.

Center Theatre Group is a member of the League of Resident Theatres (LORT), the American Arts Alliance, the Broadway League, Independent Producers' Network (IPN), and the Theatre Communications Group (TCG).

SNEHAL DESAI Artistic Director | **MEGHAN PRESSMAN** Managing Director/CEO

DOUGLAS C. BAKER* Producing Director | **GORDON DAVIDSON** Founding Artistic Director

Center Theatre Group would like to thank its exceptional staff for their ongoing commitment, dedication, and extraordinary efforts.

ARTISTIC

LINDSAY ALLBAUGH*, TYRONE DAVIS,
NEEL KELLER*, KELLEY KIRKPATRICK*, Associate Artistic Directors
TIFFANY SLAGLE Artistic & Literary Administrative Assistant
CASEY NICHOLAW, PHYLCIA RASHAD,
PAULA VOGEL Associate Artists

EXECUTIVE

CAMILLE SCHENKMAN* Deputy Managing Director
A'RAELLE FLYNN-BOLDEN Staff Programs Manager
ADRIENNE KNIGHT Assistant to the Artistic Director
and Managing Director/CEO
LYNNE GUGENHEIM Advancement Strategy, Special Events
& Leadership Consulting
BRANDON MENDEZ HOMER Executive Office Fellow

MANAGEMENT

NAUSICIA STERGIOU* General Manager
ERIC SIMS* Ahmanson Theatre Presentations Manager
KATIE SOFF* Associate General Manager
JEFFREY UPAH* General Management Associate
KIARA BRYANT Company Manager

EDUCATION AND COMMUNITY PARTNERSHIPS

TRACI KWON Arts Education Initiatives Director
JESUS REYES* Community Partnerships Director
NICO ROSARIO Creative Workforce Initiatives Director
AURORA ILOG Program Manager
COURTNEY CLARK Digital Learning Manager
MEIGHAN LA ROCCA Education & Community
Partnerships Coordinator
ZAID ALABWAINI Digital Learning Intern
ESTELA GARCIA Resident Teaching Artist
CHRISTINE BREIHAN, ZACHARY BROWN, RAMY EL-ETREBY,
AJA HOUSTON, DEREK JACKSON, JOHNATHON L. JACKSON,
JER ADRIANNE LELLIOTT, CARENE ROSE MEKERTICHYAN,
MARA PALMA, TIANA RANDALL-QUANT,
MONIQUE SYPKENS Teaching Artists

PRODUCTION

JOE HAMLIN* Director of Production
SHANNON G. BICKNELL Production Manager
KATIE CHEN Associate Production Manager
BEONICA BULLARD Assistant Production Manager
CAMBRIA CHICHI Production Coordinator
SHAWN ANDERSON* Head Carpenter (Ahmanson Theatre)
SCOTT LUCAS Head Properties (Ahmanson Theatre)
JARED BATTY Head Electrician (Ahmanson Theatre)
ROBERT SMITH* Head Sound (Ahmanson Theatre)
SHANE ANDERSON Head Flyrail (Ahmanson Theatre)
MICHAEL GARDNER* Wardrobe Supervisor (Ahmanson Theatre)
MARY BORGIA Hair & Make-up Supervisor (Ahmanson Theatre)
CHRISTINE L. COX* House Manager (Ahmanson Theatre)
EMMET KAISER* Head Carpenter (Mark Taper Forum)
MARY ROMERO Head Properties (Mark Taper Forum)
AARON STAUBACH* Head Electrician (Mark Taper Forum)
CHRISTIAN LEE Head Sound (Mark Taper Forum)
LORETTA BUSSEN Wardrobe Supervisor (Mark Taper Forum)
LINDA WALKER* House Manager (Mark Taper Forum)
ZANE WAYNERIGHT Stage Supervisor (Kirk Douglas Theatre)
CESAR VARGAS Head Electrician (Kirk Douglas Theatre)
MATTHEW COLLERAN Head Audio and Video (Kirk Douglas Theatre)
CHLOE JOY Assistant Technical Director
EDUARDO FERNANDEZ-BAUMANN Shop Coordinator

MERRIANNE NEDREBERG* Shop Director
KATE REINLIB Associate Prop Director
ERIC BABB Assistant Prop Director
RAUL VEGA MARTINEZ Prop Carpenter
CAYLYN DABNEY Resident Assistant Costume Designer
ASHPHORD JACOWAY Resident Assistant Costume Designer
NATASHA WELLS Costume Apprentice
CINDY CAMPOS Prop Apprentice
ANTHONY MOSES SANCHEZ Scenic Design Assistanship

OPERATIONS

PETER WYLIE Operations & Facilities Director
CHASE ANDERSON-SHAW Kirk Douglas Theatre Manager
CHRISTIAN TAYLOR Facilities Manager
NIKI ARMATO Facilities Associate
JULIO A. CUELLAR* Facilities Assistant
VANESSA DE LOERA Facilities Coordinator
JASMINE BRAFF Operations Supervisor
CURT GAVIN Operations Assistant
NAT PERRY, D'ANGELO ANDERSON,
SIMON J.O. MARTIN, REGINA NILES Drivers
VANESSA BRADCHULIS, OLIVIA CHOATE,
PRESSLY COKER, MONICA GREENE,
PAT LOEB, TWON POPE, SAM UDERO Stage Door

FINANCE, INFORMATION TECHNOLOGY, AND HUMAN RESOURCES

CHERYL SHEPHERD Chief Financial Officer
SARAH STURDIVANT Director of Finance & Technology
DENICE BEHDAD Assistant Controller
ANAHITA ASHRAFIPOUR Senior Accountant
XOCHITL ORTEGA Accounts Payable Supervisor
KERRY LARICK Accounting Assistant
JESSICA HERNANDEZ Payroll Manager
JUAN MARTINEZ Payroll Specialist
AMBER JACKSON Temporary Payroll Assistant

TOM MEGALE Director of Business Applications
JANELLE CABRERA TORRES Tessitura &
Web Administration Director
JOEY SOLANO Digital Product Manager
CHIMA OMEAKU Help Desk Support
CRIS SPACCA* Tessitura & IT Support

JODY HORWITZ Director of Human Resources
CRISTINA TORRES Human Resources Generalist

MOSS ADAMS Auditor
MICHAEL C. DONALDSON, LISA A. CALLIF Legal Counsel
GIBSON, DUNN & CRUTCHER Legal Counsel

INSTITUTIONAL ADVANCEMENT

SARAH SULLIVAN Director of Institutional Advancement
RICKY CARTER Director of Major and Planned Gifts
PAMELA KUHR Director of Annual Giving
PAULA MATAALLANA Associate Director of Institutional Grants
VANESSA WHEELER Associate Director of
Gift Accounting & Research
ELIZABETH DELLORUSSO Major Gifts Officer
OYE EHIKHAMHEN Individual Giving Officer
ZAIN PATEL Individual Giving Officer
NICOLE SCIPIONE* Individual Giving Officer
KATELIN URGO Individual Giving Officer
CHRISTOPHER ECKHART Donor Communications Manager
WENDY HUI Grants Manager
MIKE RATTERMAN Telefundng Manager
BK DAWSON Senior Analyst, Gift & Accountin Reporting

ALICE PELAYO Donor Liason & Institutional
Advancement Assistant
IRENE CHO Temporary Executive Assistant
AL BERMAN*, VARTAN MERJANIAN,
BENJAMIN SCHWARTZ, PAUL VITAGLIANO Donor Advisors
ANYE YOUNG Advancement Intern

MARKETING AND GRAPHICS

GARRETT COLLINS Deputy Director of Marketing
CANDICE WALTERS* Associate Director, Marketing Operations
KIYOMI EMI* Senior Manager,
Marketing Events & Partnerships
DEVANY HARDEN Manager, CRM & Email Marketing
KATHARINE MEANS Marketing Associate
JILLIAN MOORE Marketing Coordinator
MOLLY SMITH Theatre Archival Fellow
ALEXA EDWARDS Marketing Fellow
ANASTASIA ERNST Marketing Intern
CAROLINE THOMPSON/IMPACT 123 Media Planning
DEANNA MCCLURE Art & Design Director
JAVIER VASQUEZ Digital Content Producer
IRENE T. KANESHIRO* Senior Design Manager
LLA WAKILI Senior Graphic Designer
CINDY ANDRADE Production Artist

COMMUNICATIONS

BRETT WEBSTER Communications Director
JESSICA DOHERTY Associate Editorial Director
BOBBY MARTINEZ Communications Coordinator
MICHELLE TEH Publicity Intern

DAVIDSON & CHOY PUBLICITY
TIM CHOY, PETER GOLDMAN,
VICTORIA WESTBROOK Publicity Consultants

TICKET SALES AND SERVICES

SHAWN ROBERTSON* Ticket Sales Director
MICHAEL ZOLDESSY* Associate Director, Ticket Sales
SKYPP CABANAS* Senior Manager, Ticket Operations
TINTIN NGUYEN Ticketing Operations Coordinator
SANDY CZUBIAK Audience & Subscriber Services Director
JENNIFER BAKER*,
CHERYL HAWKER* Audience Services Senior Supervisors
JONATHAN FLORES Audience Services Assistant Supervisor
GARY HOLLAND*,
CHRISTIAN UNGER Audience Services Sales Associate
JESSICA ABROMAVICH, JUSTINE PEREZ* Donor Associates
KIMBERLY ARENCIBIA, VICKI BERNIT*,
CLAY BUNKER, FRANK ENSEMBERGER, DANIEL GARCIA,
MICHAEL MUNOZ, DENISE REYNOSO,
FELIPE ROQUE, SAMUEL ROQUE, JURGEN SANTOS,
CHRISTINA WRIGHT Audience Services Representatives
DANUTA SIEMAK Subscriber Services Supervisor
CHRISTINA GUTIERREZ* Subscriber Services Asst. Supervisor
LIGIA PISTE*,
PETER STALOCH* Subscriber Services Senior Representatives
SARAH K. GONTA* Box Office Treasurer
KEANA JACKSON, MICHAEL VALLE* 1st Assistant Treasurers
KAITLYN GALVEZ, MICHAEL KEMPIST*, RICHARD RUBIO,
LUIS ESPINOZA 2nd Assistant Treasurers
SD&A TELESERVICES, INC. Outbound Sales Partner
JEFFREY LIMONCELLI, KATHLEEN LITTLEFIELD,
DIANE WARD Subscription Sales Representatives

ARTISTIC DEVELOPMENT & COMMISSIONS

As part of our commitment
to supporting new plays and
playwrights, we foster and
develop a broad range of
theatrical work from diverse
artists locally, nationally,
and abroad.

Artists creating new work commissioned by Center Theatre Group this season:

AZIZA BARNES	KIMBER LEE	MARCO RAMIREZ
LISA D'AMOUR	YOUNG JEAN LEE	CYNTHIA GRACE
LARISSA FASTHORSE	MATTHEW LOPEZ	ROBINSON
JENNIFER HALEY	ROGER Q. MASON	SARAH RUHL
ALSHEA HARRIS	TAHIRIH MOELLER	T.TARA TURK-HAYNES
GERALDINE ELIZABETH	JANINE NABERS	LUIS VALDEZ
INOA	QUI NGUYEN	PAULA VOGEL
LISA KRON	LYNN NOTTAGE	KAREN ZACARIAS

L.A. WRITER'S WORKSHOP

Since 2005, we have invited
local playwrights to spend a year
researching and writing a new work
with the feedback of their fellow
writers and artistic staff as part of
our L.A. Writers' Workshop.

Learn more at CTGLA.org/Artists.

2023-2024 COHORT:

AMY BERRYMAN
INDA CRAIG-GALVAN
ISAAC GOMEZ
CHRISTOPHER OSCAR PEÑA
RAMIZ MONSEF
JASMINE SHARMA

CENTER THEATRE GROUP

PETER PAN GOES WRONG

WELCOMES SPECIAL GUEST



BRADLEY WHITFORD

BRADLEY WHITFORD, a classically trained stage actor, gained fame as “Josh Lyman,” on NBC’s *The West Wing*, which earned him his first Emmy Award in 2001. He went on to win Emmys in 2015 and 2019 for his work in *Transparent* and *The Handmaids Tale* and is grateful to have had the opportunity last year to direct the show’s fifth season penultimate episode, “Allegiance.” He is looking forward to getting back to Gilead for *The Handmaids Tale*’s sixth and final season.

Whitford recently wrapped shooting on the independent film *I’ll Be Right There* with Edie Falco, AMC’s upcoming limited series *Parish* with Giancarlo Esposito, and the Netflix limited series *The Madness* opposite Colman Domingo.

He is also known for his work in the Oscar-nominated films *Get Out*, *The Post*, *Scent of a Woman* and Lin-Manuel Miranda’s *tick, tick... BOOM!* Whitford also produced the documentary, *Not Going Quietly*, about the life of progressive activist Ady Barkan. Other notable film credits include Warner Bros’ *Godzilla: King of the Monsters*, Disney’s *Saving Mr. Banks*, and HBO’s Lyndon B. Johnson biopic, *All The Way*, among others.

TV credits include Apple TV+’s *Echo 3*, NBC’s *Perfect Harmony*, which he executive produced and starred in; FOX/Netflix’s *Brookline Nine-Nine*, Showtime’s *Happy-ish*, ABC’s *Trophy Wife*, CBS’ *The Mentalist*, and FOX’s *The Good Guys*, and NBC’s *Studio 60 on the Sunset Strip*, among others.

Growing up in Wisconsin, Whitford studied theatre and English literature at Wesleyan University and attended the Juilliard Theatre Center. He has appeared on Broadway in Aaron Sorkin’s *A Few Good Men* and in *Boeing Boeing* with Mark Rylance. Off-Broadway credits include *Curse of the Starving Class*, *Measure for Measure* at Lincoln Center, and *Three Days of Rain* at Manhattan Theatre Club. Regional credits include the title role in *Coriolanus* at the Folger Shakespeare Theatre in Washington, D.C. and Oberon and Theseus in *A Midsummer Night’s Dream* at Hartford Stage. In 2021, Whitford starred in the Old Vic’s production of *A Christmas Carol* at the Ahmanson in Los Angeles as “Ebenezer Scrooge.” He is thrilled to be back on stage.

CENTER THEATRE GROUP

PETER PAN GOES WRONG

WELCOMES SPECIAL GUEST



DANIEL DAE KIM

DANIEL DAE KIM is an actor, director, producer, and activist widely known for his work in ABC's *Lost*, CBS's *Hawaii Five-O*, Netflix's *Stowaway*, Disney+'s *Raya And The Last Dragon*. He returns to the stage after making his Broadway debut in Lincoln Center's Tony Award-winning 2017 production of *The King and I*.

Most recently, Kim wrapped production on Netflix's live-action *Avatar: The Last Airbender* where he will play the lead villain, Fire Lord Ozai. Up next, Daniel and his production company, 3AD, will team up for a new spy thriller series for Amazon, which will be shot in Korea later this year. Kim can also be seen in BJ Novak's FX series, *The Premise*, Nat Geo's *The Hot Zone: Anthrax*, and Apple TV+'s *Roar*. Kim and 3AD produce ABC's *The Good Doctor*, as well as 2023's multi-award-winning documentary *Bad Axe*.

His theatre credits include productions with London's Royal Albert Hall, New York's Public Theater, Theatre For A New Audience, East West Players, Pan Asian Rep, and NAATCO, and he received his training in classical theater from NYU's Tisch School of the Arts, where he received his MFA.

Kim's advocacy for Diversity, Equity and Inclusion is longstanding. His most recent testimony in front of Congress in 2021 helped lead to the passage of the "Covid-19 Hate Crimes Act," and he currently serves on the White House's Commission for Asian American, Native Hawaiians, and Pacific Islanders. Additionally, he serves on the Board of Gold House and co-chairs the Advisory Council of The Asian American Foundation, which partnered this year with 3AD and Gold House for the first official AAPI centered House at the Sundance Film Festival.

He stands in solidarity with the striking writers and actors fighting for fair compensation, and dedicates his performance to the people of Maui for their strength in the wake of the devastating brushfires. His salary from this production will be donated to the following organizations in their support:

www.entertainmentcommunity.org

www.hawaiicomunityfoundation.org/maui-strong

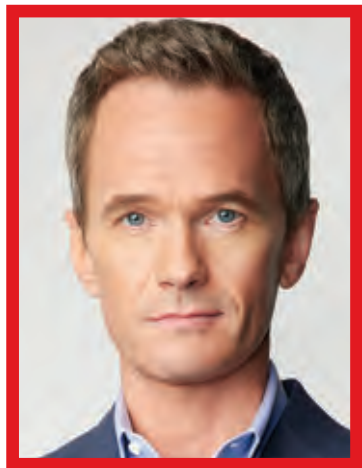
www.memberplanet.com/campaign/cnhamembers/kakoomaui

Please visit their websites for more information.

CENTER THEATRE GROUP

PETER PAN GOES WRONG

Welcomes Special Guest



NEIL PATRICK HARRIS
in the role of Francis

NEIL PATRICK HARRIS is a multi-hyphenate known for iconic roles on both stage and screen. He'd happily rattle off his TV and film credits but, you know, strikes and blackouts and whatnot... so let's just focus on the stage part, shall we? A veteran of the theatre, Harris originated the role of Hedwig in the Tony Award-winning Broadway production of *Hedwig and the Angry Inch* (Tony, Drama League, and Drama Desk Awards). His additional theatrical credits include *Peter Pan Goes Wrong* (Barrymore Theatre), *Into the Woods* (NY City Center), *Assassins* (Studio 54), *Proof* (Walter Kerr Theatre), *Cabaret* (Studio 54), *Company* (New York Philharmonic), *All My Sons* (Geffen Playhouse), *The Paris Letter* (Kirk Douglas Theatre), *Sweeney Todd* (NY Phil, San Francisco Symphony Orchestra), *Romeo and Juliet* (Old Globe Theatre), *Rent* (Los Angeles/2nd National Tour), *Luck, Pluck, Virtue* (Atlantic Theater Co.) and *tick, tick...BOOM!* (Menier Chocolate Factory).

Utilizing his theatrical expertise behind the curtain, Harris made his musical directorial debut with the Hollywood Bowl's staging of Jonathan Larson's *Rent*. His additional directing credits include *Nothing to Hide* (Pershing Square Signature Center & Geffen Playhouse), *The Expert at the Card Table* (Edinburgh Fringe Festival & Broad Stage Theater) and the upcoming *Tick, tick... Boom!* at the Kennedy Center in DC. Additionally, Harris produced *In & Of Itself*, an Off-Broadway magic show directed by Frank Oz at the Daryl Roth Theater in New York.

Harris is a five-time Emmy Award-winner and New York Times bestselling author. Special thanks to his husband David and twin tweens Gideon and Harper, for laughing at his jokes, regardless of whether they mean it or not.