

Clue

LIVE ON STAGE!

BONUS PRODUCTION

HADESTOWN

Music, Lyrics & Book by Anaïs Mitchell (she/her)
Developed with & Directed by Rachel Chavkin (she/her)

OCTOBER 3–15, 2023

A CHRISTMAS STORY, THE MUSICAL

Book by Joseph Robinette
Music and Lyrics by Benj Pasek and Justin Paul
Original Direction on Broadway by John Rando
Choreography by Warren Carlyle
Directed by Matt Lenz

DECEMBER 5–31, 2023

MATTHEW BOURNE'S ROMEO AND JULIET

North American Premiere

JANUARY 28 – FEBRUARY 25, 2024

FUNNY GIRL

Music by Jule Styne
Lyrics by Bob Merrill
Book by Isobel Lennart
Revised Book by Harvey Fierstein

APRIL 2–28, 2024

A STRANGE LOOP

Book, Music, And Lyrics by Michael R. Jackson
Choreography by Raja Feather Kelly
Directed by Stephen Brackett
A co-production with American Conservatory Theater

JUNE 5–30, 2024

CLUE

Written by Sandy Rustin
Additional Material by Hunter Foster and Eric Price
Based on the screenplay by Jonathan Lynn
Original Music by Michael Holland
Based on the 1985 Paramount movie
and the classic Hasbro board game

JULY 30 – AUGUST 25, 2024

SEASON SPONSOR

BANK OF AMERICA



CENTER
THEATRE
GROUP

friend.
insider.
visionary.

you!

YOUR MEMBERSHIP EXPERIENCE
AT CENTER THEATRE GROUP

As a not-for-profit organization, Center Theatre Group relies on the support of generous theatre-lovers like you. Become a member with a tax-deductible contribution of \$100—or just \$10 per month—and make a vital difference for our future following the most challenging period in Center Theatre Group's history. Your gift will enable us to continue to produce and present the highest caliber theatre, nurture new artists, and provide transformative arts education programs.

Plus, your gift will unlock membership benefits to enhance your theatregoing experience, from priority ticket access to members-only events and more!

Learn more at CTGLA.org/membership



SCAN HERE TO SUPPORT
CENTER THEATRE GROUP NOW

QUESTIONS?

Call our Membership Concierge
at 213.972.7564 or email membership@CTGLA.org

CENTER
THEATRE
GROUP

friends

Friends get first access to tickets before the general public plus invitations to members-only events, including tours and rehearsals. *Join today with a gift of \$100 or more—or just \$10 per month.*

insiders

Insiders enjoy a year-round VIP experience with access to the best seats for our shows, concierge service for house seats at New York and London productions, and special behind-the-scenes events. *Join today with a gift of \$2,500 or more.*

visionaries

Visionaries have the ultimate access to our artists, shows, programs, and staff, with premium seating for our productions, including use of The Founders' Room at the Ahmanson, and invitations to private salon-style artist events. *Join today with a gift of \$15,000 or more.*

CENTER
THEATRE
GROUP

SNEHAL DESAI Artistic Director | MEGHAN PRESSMAN Managing Director/CEO | DOUGLAS C. BAKER Producing Director
GORDON DAVIDSON Founding Artistic Director

The Araca Group Work Light Productions Lively McCabe Entertainment Aged In Wood
presents

Clue
LIVE ON STAGE!

based on the screenplay by **JONATHAN LYNN**

written by **SANDY RUSTIN**

additional material by **HUNTER FOSTER** and **ERIC PRICE**

based on the Paramount Pictures Motion Picture
based on the Hasbro board game CLUE

with

MARIAH BURKS JOHN TREACY EGAN MICHELLE ELAINE JOANNA GLUSHAK TARI KELLY MARK PRICE
JOHN SHARTZER JONATHAN SPIVEY ALEX SYIEK TEDDY TRICE ELISABETH YANCEY

GREG BALLA ALISON EWING MARY MCNULTY JAMES TAYLOR ODOM

Scenic Design
LEE SAVAGE

Costume Design
JEN CAPRIO

Lighting Design
RYAN O'GARA

Sound Design
JEFF HUMAN

Hair, Wig & Makeup Design
J. JARED JANAS

Composer and Music Supervision
MICHAEL HOLLAND

Fight Direction
ROBERT WESTLEY

Associate Director
STEVE BEBOUT

Casting
PEARSON CASTING, CSA CDG

Production Stage Manager
MARGOT WHITNEY

Company Manager
SUZANNE PRUETER

Booking and Marketing Direction
BOND THEATRICAL

Social Media
MARATHON DIGITAL

Production Management
PORT CITY TECHNICAL
HUNTER STORIE

General Management
WORK LIGHT PRODUCTIONS
MATT KUNKEL

Directed by
CASEY HUSHION

CLUE and all related characters are trademarks of Hasbro and are used with permission. ©2024 Hasbro. Licensed by Hasbro.

Originally produced at Bucks County Playhouse, New Hope, Pennsylvania, Alexander Fraser, Robyn Goodman,
Stephen Kocis, Josh Fiedler, Producers.

Clue: A New Comedy developed by Cleveland Play House, Laura Kepley, Artistic Director & Kevin Moore, Managing Director

JULY 30 – AUGUST 25, 2024 **AHMANSON THEATRE**

CAST



**MARIAH
BURKS**



**JOHN
TREACY EGAN**



**MICHELLE
ELAINE**



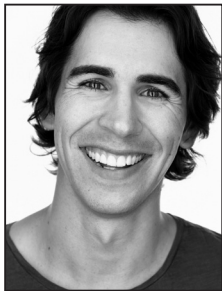
**JOANNA
GLUSHAK**



**TARI
KELLY**



**MARK
PRICE**



**JOHN
SHARTZER**



**JONATHAN
SPIVEY**



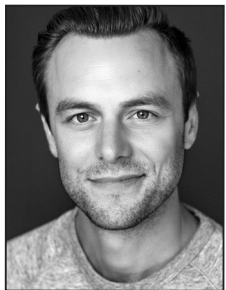
**ALEX
SYIEK**



**TEDDY
TRICE**



**ELISABETH
YANCEY**



**GREG
BALLA**



**ALISON
EWING**



**MARY
MCNULTY**



**JAMES
TAYLOR ODOM**

Please turn off all electronic devices such as cellular phones and watch alarms. The use of any recording device, either audio or video, and the taking of photographs, with or without flash, is strictly prohibited.

CAST

(In Order of Speaking)

Wadsworth Mark Price
 Yvette Elisabeth Yancey
 The Cook (and others) Mariah Burks
 Colonel Mustard John Treacy Egan
 Mrs. White Tari Kelly
 Mrs. Peacock Joanna Glushak
 Mr. Green John Shartzter
 Professor Plum Jonathan Spivey
 Miss Scarlet Michelle Elaine
 Mr. Boddy (and others) Alex Syiek
 The Cop (and others) Teddy Trice

UNDERSTUDIES

Understudies never substitute for listed performers unless a specific announcement is made at the time of the appearance.
 For Colonel Mustard, Mr. Green, Professor Plum, Mr. Boddy (and others), The Cop (and others) – GREG BALLA; For Yvette, The Cook (and others), Mrs. White, Mrs. Peacock – ALISON EWING; For Yvette, The Cook (and others), Mrs. White, Mrs. Peacock, Miss Scarlet – MARY McNULTY; For Wadsworth, Mr. Green, Professor Plum, Mr. Boddy (and others), The Cop (and others) – JAMES TAYLOR ODOM; For Wadsworth – JONATHAN SPIVEY; For Colonel Mustard – TEDDY TRICE; For Miss Scarlet – ELISABETH YANCEY

FIGHT CAPTAIN

Greg Balla

TIME

1954

PLACE

Boddy Manor, a mansion of epic proportions and terrifying secrets, in New England.

CLUE WILL BE PERFORMED WITH NO INTERMISSION.

Latecomers will be seated at the discretion of management. Patrons with disabilities: wheelchair seating is available in a variety of theatre locations. When ordering tickets, please indicate any special needs. For our hearing-impaired guests, the theatre is equipped with listening devices; please contact an usher for assistance.

WHO'S WHO

MARIAH BURKS (*The Cook and others*). A native Clevelander making her national tour debut. Credits: *Little Women* (Dobama Theatre), *Antigone* (CPH), *Clue* (CPH). Alum of the CWRU/CPH MFA Acting Program & BGSU. Recipient: National Irene Ryan Acting Award at The Kennedy Center. Regional/local credits: *Caroline, or Change* (Tantrum Theatre); *Ragtime* (Cain Park). Love & gratitude to all! @magical_mariahb

JOHN TREACY EGAN (*Colonel Mustard*). Broadway: *My Fair Lady*, *Casa Valentina*, *Nice Work...*, *Sister Act*, *The Little Mermaid*, *The Producers*, *Jekyll & Hyde*, *Bye Bye Birdie*. Off-Broadway: *Clinton The Musical*, *When Pigs Fly*, *Disaster!*, *Bat Boy*. Television: *And Just Like That*, *Gotham*, *Younger*, *The Good Wife*, *The Knick*, *Boardwalk Empire*, *Nurse Jackie*, and *30 Rock*. officialjohntreacyegan.com

MICHELLE ELAINE (*Miss Scarlet*). Alley Theatre: *Clue*, *Dead Man's Cell Phone*, *Sense and Sensibility*, *Sweat, Quack, All The Way*. The Ensemble Theatre: *Clyde's; By The Way*, *Meet Vera Stark; Gee's Bend and School Girls; Or, the African Mean Girls Play*. Stages: *POTUS*, *We Are Proud to Present...*, *Failure: A Love Story*. Watch Michelle's web series @castmedammit on YouTube! @michelleelaineofficial

JOANNA GLUSHAK (*Mrs. Peacock*). Broadway (Highlight Roles): *1776*, *A Gentleman's Guide To Love And Murder*, *Sunday In The Park With George*, *Les Misérables*, *Hairspray*, *Urinetown*. National Tours: *1776*, *Finding Neverland*, *Young Frankenstein*, *Xanadu*. 'Mrs. O'Toole' in *The Marvelous Mrs. Maisel* as well as many other roles for Film/TV. Yale Drama School Graduate. More info at joannaglushak.com

TARI KELLY (*Mrs. White*). Broadway: *Mr. Saturday Night*, *Groundhog Day*, *Something Rotten!*, *Anything Goes*, *The Boy from Oz*, *Dr. Seuss' How the Grinch Stole Christmas! The Musical*, and *Show Boat*. National Tours: *Anastasia*, *Little Shop of Horrors*, *Show Boat*, and *Beauty and the Beast*. Check out tarikelly.com

MARK PRICE (*Wadsworth*). Broadway: *Mary Poppins*, *All Shook Up*, *Wonderful Town*, *Rocky Horror Show*, *Mamma Mia!*, *Dance of the Vampires*, *The Capeman*, and *Chicago*. Regional: *Clue*, *Dial M for Murder*, *The 39 Steps*, *The Cottage*, *Lend Me A Tenor*, *Assassins*, *Sondheim Celebration* (Lincoln Center), *Sweeney*

Todd (Kennedy Center; Helen Hayes nomination). TV: *Blacklist*, *Murphy Brown*, *The Good Wife*, *Law & Order*. aboutmarkprice.com

JOHN SHARTZER (*Mr. Green*). Theatre: *Aladdin: A Musical Spectacular*, *Darling Grenadine*, *Clue*. Film: *Book Club*. Television: *Dahmer*, *Station 19*, *9-1-1: Lonestar*, *Brooklyn 99*, *Grace & Frankie*, *While You Were Breeding*. Songwriting: Emmy nominated for *Shine*. Thank you Casey and Sandy. Love to my Mrs. with all the right kisses Cassandra and our strong and beautiful Nora.

JONATHAN SPIVEY (*Professor Plum, u/s Wadsworth*). He/him. Broadway: *The Front Page, Act One*. Off-Broadway: *Summer & Smoke*, *Morning's at Seven*, *Smart Blonde*. Regional: Yale, Old Globe, Denver Center, Long Wharf, Barrington, Milwaukee Rep, Cape Playhouse, many more. TV: *The Gilded Age*, *Blue Bloods*, *The Blacklist*, *FBI: Most Wanted*, *East New York*. MFA: Old Globe. jspivey.com

ALEX SYIEK (*Mr. Boddy and others*). Some favorite credits: *Natasha...Great Comet* (Pierre, ISF/Great Lakes Theater), *Groundhog Day* (Phil, Paramount Theatre), *Murder on the Orient Express* (Officer, Paper Mill Playhouse). Musical Projects: *The Show on the Roof* (Music and Lyrics), *The Poké Musical* (Book and Lyrics). BWU MT '13, NYU GMTWP (Cycle 26). Thank YOU for supporting live theatre. alexsyiek.com

TEDDY TRICE (*The Cop and others, u/s Colonel Mustard*). He/him. *The Book of Mormon* (Broadway, 2nd Nat'l Tour). International Tour: *Come From Away*, *The Book of Mormon* (Australia). Off-Broadway: *The Butcher Boy* (Irish Repertory Theatre), *Shedding Load* (59E59). Select Regional: *The Island* (KC Actors Theatre), *Sweat* (Unicorn Theatre). BA in Theatre (Drury University). Gratitude and love to Claire, Mom and Dad, Manager, Rochel Saks, and the *Clue* team. @teddytrice

ELISABETH YANCEY (*Yvette, u/s Miss Scarlet*) is an actor, yoga instructor and coach based in NYC. Favorite Regional Credits: Palm Beach Dramaworks, Gulfshore Playhouse, Cleveland Play House, and Wellesley Repertory Theater. Chautauqua Institute Conservatory 2020, MFA Acting (CWRU/CPH), BA Theatre Studies (Wellesley College), Certificate Classical Acting (LAMDA). @elisabethyancey

GREG BALLA (*Fight Captain; u/s Colonel Mustard, Mr. Green, Professor Plum, Mr. Boddy and others, The*

Cop and others). Off-Broadway: *Straight, Blue Man Group*. Regional Credits Include: *La Jolla*, *Hartford Stage*, *Huntington*, *Pioneer Theatre*, *John Drew*, *Lyric Stage*. TV/ Film: *The Watcher* (Netflix), *The Blacklist* (NBC), *The Penguin* (HBO Max), *No Hard Feelings* (Sony Pictures). Love to my best friend and partner, Angelica. imGregBalla.com

ALISON EWING (*u/s Yvette, The Cook and others, Mrs. White, Mrs. Peacock*). Broadway: *Mamma Mia!* (Tanya), *Cabaret*. National Tours: *Anastasia* (Countess Lily), *An American In Paris*, *Cabaret*, and *Flashdance*. Regional: *A Chorus Line* (Sheila) at SFPlayhouse, *Fun Home* at Berkeley Playhouse, *Hand To God* at SJ Stage, *Emma* and others at TheatreWorks, *A Little Night Music* at 42nd Street Moon. Alison is an audiobooks narrator with Tantor and Audible. Love to Keith. AlisonEwing.com

MARY MCNULTY (*u/s Yvette, The Cook and others, Mrs. White, Mrs. White, Mrs. Peacock, Miss Scarlet*). National Tour: *Camelot* (Guenevere). Select Regional Credits: *Clue* (Cover); *Kiss Me, Kate* (Lillie/Katherine); *Into the Breeches* (June); *Much Ado About Nothing* (Beatrice); *Into the Woods* (Baker's Wife), *Moon Over Buffalo* (Rosalind). Many thanks to ATB! mary-mcnulty.com

JAMES TAYLOR ODOM (*u/s Wadsworth, Mr. Green, Professor Plum, Mr. Boddy and others, The Cop and others*). National Tours: *D'Ysquith in A Gentleman's Guide to Love & Murder*, *The Sound of Music*. Regional: *The Rainmaker* (Laguna Playhouse), *The 39 Steps* (Virginia Stage), *Clue* (Gateway Playhouse), *God of Carnage* (Shadowland Stages), *Murder For Two and It Came From Outer Space* (TheatreSquared), *Grumpy Old Men* (Ogunquit Playhouse), *Mary Poppins* (Tuacahn). MFA: University of Arkansas. BA: Brenau. Avalon Artists Group.

JONATHAN LYNN (*Based On The Screenplay*). Feature film direction: *Clue*, *Nuns on the Run* (also wrote), *My Cousin Vinny*, *Greedy*, *Trial And Error*, *The Whole Nine Yards*, *The Fighting Temptations*, and *Wild Target*. Select TV writing: *Yes Minister* and *Yes, Prime Minister*. Bestselling books: *The Complete Yes*, *Minister* and *The Complete Yes, Prime Minister*, cumulatively over a million copies and translated into numerous languages. He wrote the novels *Mayday* (1991) and *Samaritans* (2017) and a book about comedy, *Comedy Rules* (2011). In London he wrote/directed two plays: *Yes Prime Minister* and *The Patriotic Traitor* (The Park). Awards: BAFTA, Writers Guild (twice), Broadcasting Press Guild (twice), NAACP Image

Award, Environmental Media Award, Ace Award, and a Special Award from the UK Campaign For Freedom of Information. Lynn received an MA in Law from Cambridge University and now lives near New York City, writing new plays, describing himself as a recovering lawyer. jonathanlynn.com

SANDY RUSTIN (*Book*) is a Broadway playwright and actress named by American Theatre Magazine as one of the "Most-Produced Playwrights" in the U.S. Her comedy, *The Cottage*, premiered last summer on Broadway. Sandy penned the musical stage adaptation of MGM's film *Mystic Pizza* as well as the concert adaptations of *I Married An Angel* and *Dear World* (NY Times Critic's Pick) for NY City Center Encores! Her comedy, *The Suffragette's Murder*, will premiere in 2025. Her musical, *Houston* (New American Musical Award), is in development with Grammy winner, Edie Brickell. She has developed works for Disney, STX Entertainment, Primary Wave Music, and Mattel. Other works: *Rated P ... For Parenthood*, *Elijah*, *Struck*, *Always Something There*, and more. A Northwestern University graduate, Sandy serves on the Advisory Board of NYU's Camp Kesem chapter. Love to Evan, Isaac & Charlie. sandyrustin.com @sandyrustin_

HUNTER FOSTER (*Additional Materials*). Originally adapted and co-wrote *Clue* from its earliest development, and directed its world premiere at the Bucks County Playhouse. He has also directed *Clue* for the Cape Playhouse and the Utah Shakespeare Festival. He directed the Off-Broadway musical, *The Other Josh Cohen*, and was named *Director of the Year* by the Wall Street Journal. Select directing credits: *The Drowsy Chaperone* (Goodspeed), *Million Dollar Quartet* (Paper Mill), *The Bridges of Madison County*, *Guys & Dolls*, *42nd Street* (Bucks County), *Once*, *My Fair Lady*, *Cabaret* (Cape Playhouse), *Our Town*, *Jersey Boys*, *Rock of Ages* (Theatre Aspen). Writing credits: *Jasper in Deadland* (Off-Broadway), *Summer of '42* (Off-Broadway, Outer Critic Nomination), *The Circus in Winter* (Goodspeed Musicals), *Clyde 'n Bonnie* (Aurora Theatre), and *The Hollow* (Signature Theatre). Received a Tony Award nomination for his performance on Broadway in *Little Shop of Horrors*.

ERIC PRICE (*Additional Materials*). Lyrics and Book: *The Violet Hour*, *Radioactive*, *Presto Change-o*, *Around the World*, *Hello Out There*, *The Sixth Borough*, and a musical adaptation of Jane Austen's *Emma* which has been produced around the country. The Studio Cast Recording of *The Violet Hour* was named The Best Cast Recording of 2022 by the Broadway Radio Show and inspired a documentary film *Moment to*

Moment which tells the story of its creation. With collaborator Will Reynolds, Eric won the Fred Ebb Award for Musical Theatre Writing. He's a member of the Lincoln Center Theatre Directors Lab, a Dramatists Guild Fellow, and earned an MFA in Musical Theatre from NYU. In addition to his career as a writer, Eric was the assistant to 21-time Tony Award®-winner Hal Prince and worked with him for many years on the development of new plays and musicals. theviolethourmusical.com

CASEY HUSHION (*Director*). Broadway: Associate Director of *Mean Girls*, *Aladdin*, *The Prom*, *In The Heights*, *Elf*, *The Drowsy Chaperone*, *To Be Or Not to Be* and *Good Vibrations*. New York credits include *Call Me Madam* (Encores), *Fat Camp* and *Nerds* (almost). Before launching the national tour of *Clue*, Casey directed the premiere at Cleveland Playhouse, as well as productions at *la Mirada Theatre* and *Paper Mill Playhouse*. Also at *Paper Mill*, she has directed *Murder On The Orient Express*, *A Jolly Holiday*, *Beehive* and *Beautiful*. Most recently, Casey helmed the National Tour of *The Cher Show* and the new musical *Mystic Pizza*. Casey served as Artistic Director of North Carolina Theatre for ten years. For television, Casey has choreographed episodes of *Unbreakable Kimmy Schmidt*. Love to Marc and her three kids, Lincoln, Violet and Jane. caseyhushion.com

LEE SAVAGE (*Set Design*). Broadway: *The Lightning Thief*. NYC: Women's Project, Second Stage Uptown, Keen Company, Acting Company, Mabou Mines, Labyrinth, Primary Stages, LCT3, Roundabout Underground, Page 73, Atlantic, NAATCO, and others. REGIONAL: ACT, Asolo Rep, Baltimore Centerstage, Chautauqua, Cleveland Play House, Dallas Theater Center, Glimmerglass, Goodman, and others. AWARDS: Helen Hayes, NAACP and Connecticut Critics Circle. Affiliations: Wingspace and USA829. MFA (Yale School of Drama), BFA (RISD), Head of Scenic Design at Rutgers, Mason Gross School of the Arts.

JEN CAPRIO (*Costume Design*). Broadway: *Heart of Rock and Roll*, *Spamalot*, *Falsettos*, *The 25th Annual Putnam County Spelling Bee*. National/International: *Falsettos*, *Joseph...*, *The Lion* (West End/US Tour), ...Spelling Bee (US Tours). TV: *The Pigeon Explains* (YouTube), *Tiny Time Travel* (PBS Kids), *Sesame Street* (seasons 47-54), *The Not-Too-Late Show with Elmo* (Seasons 1-2), *Manhunt* (Apple TV+). 2019, 2020, & 2021 Nomination, 2020 Daytime Emmy Winner for *Sesame Street*. jencaprio.com. Instagram: @jencapriocostumedesign

RYAN O'GARA (*Lightning Design*). Broadway: *The Wiz*, *Thoughts of a Colored Man*. National Tour (select): *The Wiz*, *Mystic Pizza*, *On Your Feet*, *MDQ – Christmas*, *Juke Box Hero*, *Blippi*, *Vocalosity*, *The Little Prince* and *A Night with Janis Joplin*. Select: *Cirque*, *Norwegian Cruise Line*, *Tokyo DisneySea*, *NY City Opera*, *Paper Mill*, *Walnut Street*, *Drury Lane*, *TUTS*, *New Victory Theatre*, *Capital Repertory* and *Bristol Riverside Theatre* (2016 Barrymore). ALD for 29 Broadway productions. Graduated from UNCSA. ryanogara.com

JEFF HUMAN (*Sound Design*) is the Director of Design for Kirkegaard Integrated Systems Design. www.kirkegaard.com. He was the Associate Sound Designer for *Something Rotten* Second National Tour and Seoul productions. His regional sound design credits include *Clue* at the Cleveland Play House and *The Aliens* and *Bad Dates* at the Weston Playhouse. Gratitude to Steve and Nancy Gabriel and Rhys Williams. Many thanks to Rossella and the kids for their love and support.

J. JARED JANAS (*Hair, Wig, & Make up Design*). Broadway: *Prayer for the French Republic*; *Purlie Victorious*; *Good Night, Oscar*; *Sweeney Todd...*; *Ohio State Murders*; *& Juliet*; *Kimberly Akimbo*; *Topdog/Underdog*; *How I Learned to Drive*; *American Buffalo*; *Jagged Little Pill*; *Frankie and Johnny in the Clair de Lune*; *Gettin' the Band Back Together*; *Bandstand*; *Indecent*; *Sunset Boulevard*; *The Visit*; *The Real Thing*; *Lady Day at Emerson's Bar & Grill*; *Motown*; *Peter and the Starcatcher*; *The Gershwins' Porgy and Bess*.

MICHAEL HOLLAND (*Original Music and Music Supervision*). Orchestrations/vocal arrangements: *Godspell* (Broadway revival); *You're a Good Man, Charlie Brown* (Cincinnati Playhouse); *Emma: A Pop Musical* (Broadway Licensing); *Farah Alvin: On Vinyl* (2023 recording). Music and lyrics: *Twelve Angry Men: A New Musical* (2021 World Premiere, Theater Latté Da, Minneapolis; Asolo Rep, Sarasota, Spring 2024); *You're Gonna Hate This* (Joe's Pub; Feinstein's 54 Below, NYC). Incidental music: Dallas Theater Center, Alley Theater, Old Globe, Playwrights Horizons, Bay Street Theater, others.

ROBERT WESTLEY (*Fight Director*) has choreographed movement for Broadway, Off-Broadway, West End Productions and award-winning films developing unique and exciting performances of dance, clowning, aerial acrobatics, puppetry and martial art. Broadway: *I Need That*, *Bernhardt/Hamlet*, *A Bronx Tale: The Musical*, *Hand to God*. Off-Broadway: *Teenage Dick* (Public Theater), *Important Hats of the Twentieth Century* (MTC), *The Thanksgiving Play*

(Playwrights Horizons). West End: *Mad House*. Pre-Broadway Musicals: *The Sting*, *The Honeymooners*.

STEVE BEBOUT (*Associate Director*) served as Associate Director for *Company* (Tour), *Some Like It Hot* (Broadway), *Aladdin* (Broadway, Tour), *Something Rotten!* (Broadway, Tours), *The Book of Mormon* (Broadway, Tours, West End), *Sister Act* (Broadway), *The Addams Family* (Broadway, Tours, International). Directing credits include *UnCivil* (World Premiere), *I Got Fired* (NYMF, Korea), Regional productions of *Newsies* (St Louis, Raleigh), *Clue* (St Louis. Thanks, Casey!), *Annie* (Fort Worth), *Elf* (Atlanta), *Buddy* (multiple), *Little Shop of Horrors* (multiple). Loves Holly & Gus!

PEARSON CASTING, CSA, CDG (*Casting*). *Starlight Express* (Troubadour Theatre), *SIX* (Vaudeville Theatre, West End & UK National Tour), *Operation Mincemeat* (Fortune Theatre, West End), *Pretty Woman* (US National Tour), *Fantastically Great Women Who Changed The World* (UK National Tour), *Bluey's Big Play* (Southbank Centre & UK National Tour), *Lizzie The Musical* (Southwark Playhouse), *Gypsy* (The Mill At Sonning). Pearson Casting won a CDG casting award for best regional production for *RENT* (Hope Mill Theatre).

BOND THEATRICAL (*Tour Booking, Marketing & Publicity*) is an independently-owned theatrical booking, marketing and publicity company representing award-winning Broadway shows and live entertainment properties. BOND connects artists and audiences by forming strategic, authentic and profitable partnerships between producers and presenters across North America. Current tour booking and marketing shows: *& Juliet*, *A Beautiful Noise*, *Clue*, *Company*, *Dr. Seuss' How The Grinch Stole Christmas! The Musical*, *JCS*, *Life Of Pi*, *Les Misérables*, *Peter Pan*, *Shucked*, and *Water for Elephants*. Current marketing and publicity shows: *Dear Evan Hansen*, *Jagged Little Pill*, *MJ*, *Moulin Rouge! The Musical*, *SIX* and *Tina — The Tina Turner Musical*. For a complete list of current projects, please visit BondTheatrical.com

PORT CITY TECHNICAL (*Production Management*) is a production management company based in Charleston, S.C. Also referred to as *Work Light South*, PCT was initially started in 1993 as Technical Theater Solutions by Rhys Williams. TTS worked with WLP on many shows, including *American Idiot*, *Nice Work If You Can Get It*, *In the Heights* and *Avenue Q*. Since the conception of PCT, tours with WLP have included *RENT*, *An Officer and a Gentleman*, *Vocalosity*, *Motown*, *R&H's Cinderella*, *Something*

Rotten!, *Bandstand*, *White Christmas* and the pre-Broadway *Ain't Too Proud: The Temptations Musical*. Current and upcoming tours include *Ain't Too Proud*, *Clue*, *Company*, *MAMMA MIA!*, *Mrs. Doubtfire*, and *Jesus Christ Superstar*.

PARAMOUNT PICTURES (*Based on the Paramount Pictures Motion Picture*) a division of Paramount Global, has for more than 110 years produced and distributed some of the world's most iconic films. Paramount Global's Broadway and West End titles include *Mean Girls*, nominated for 12 Tony Awards and now on its second national tour; *The SpongeBob Musical*, nominated for 12 Tony Awards; *Sunset Boulevard*, returning to Broadway in 2024; *School of Rock*; *Ghost*; *Almost Famous*; *The Kite Runner*; and *Irving Berlin's White Christmas*. Stage projects in development include *Clueless the Musical*.

HASBRO (*Based on the Hasbro board game CLUE*) is a leading toy and game company whose mission is to entertain and connect generations of fans through the wonder of storytelling and exhilaration of play. Hasbro delivers engaging brand experiences for global audiences through toys, consumer products, gaming and entertainment, with a portfolio of iconic brands including Magic: The Gathering, Dungeons & Dragons, Hasbro Gaming, Nerf, Transformers, Play-doh And Peppa Pig, as well as premier partner brands. © 2024 Hasbro, Inc. All Rights Reserved.

MARGOT WHITNEY (*Production Stage Manager*). Broadway: *SWEAT*. Tour: *Clue*, *Mean Girls*, *Come From Away*, *Bright Star*, *The King & I*, *Cinderella*, *War Horse*. Select Others: Ensemble Theatre Cincinnati, The Public, Signature Theatre, Shakespeare Theatre of NJ, La Jolla Playhouse, Cincinnati Opera, and Cincinnati Ballet. University of Cincinnati - CCM alum. Love to family and friends!

EMILY KRITZMAN (*Assistant Stage Manager*) studied Stage Management at the University of North Carolina School of the Arts. She is honored to be a part of the national tour of *Clue*. Former credits include *Mean Girls*, *Hairspray*, *Waitress*, and *Anastasia*. She would like to thank her friends, parents, and Tom for their endless support.

MARIA BELLA DIVITTORIO (*Assistant Stage Manager*). Broadway: *Mr. Saturday Night*. Off-Broadway: *The Jerusalem Syndrome*, *Fuente Ovejuna*, *Lessons In Survival: 1971*. National Tours: *Mrs. Doubtfire*. Regional: *Paperboy* (Manhattan School of Music), *Black Like Me* (Chautauqua Theater), *Ella and Her Fella Frank* (Virginia Rep). UNCSA Stage Management '21. Much love to her cats, Pretzel and Chucky.

BERRIT KELLER (*Substitute Assistant Stage Manager*). She/her. Stage Manager at Radio City Music Hall. Broadway: *Moulin Rouge*, *Beetlejuice*, *Company*, *Bad Cinderella*, *West Side Story*. Regional: Roundabout, The Kennedy Center, The MUNY, The Old Globe. BFA University of Michigan. For Chandler and Lily.

SARAH E. T. JACKSON (*Substitute Assistant Stage Manager*). National Tour: *The Lion King*. Off-Broadway: Kate Hamill's *Dracula*. Regional: *Fiddler on the Roof* (Philadelphia Orchestra), *Annie Get Your Gun* (Bay Street Theatre), *Rocky Horror Picture Show* (Bucks County Playhouse), *Into the Woods* (Juilliard Drama Division), *Kiss*; *Mary Jane* (Yale Repertory Theatre), MFA - Yale School of Drama.

SUZANNE PRUETER (*Company Manager*). Thrilled to re-join Work Light Productions having supported tours of *RENT* and *Motown* as Associate Production Manager. Company Manager for Broadway shows and touring companies such as *Les Misérables*, *Fosse*, *Aida*, and *Beauty and the Beast*. Able to stuff more luggage under a bus than most bus drivers.

THE ARACA GROUP (*Producer*). Founded in 1997 by partners Matthew Rego, Michael Rego and Hank Unger, the Araca Group is a Broadway producing and merchandising company. Broadway producing credits include: *Urinetown: The Musical*; *Wicked*; *SpongeBob SquarePants*; *Disgraced*; *Frankie and Johnny in the Clair de Lune* (starring Edie Falco and Stanley Tucci); *A View From the Bridge* (starring Liev Schreiber and Scarlett Johansson); *The Wedding Singer* and *Lend Me a Tenor* (starring Tony Shalhoub). Upcoming Broadway productions include: *The Outsiders*. araca.com

WORK LIGHT PRODUCTIONS (*Producer & General Management*). Formed in 2005, WLP has since grown into a full service producing, investment, general management, and technical supervision company. Current and past productions: Olivier Award winning production of *Jesus Christ Superstar* (North America, UK Tour), *Ain't Too Proud* (Broadway, North America, West End), *Clue* (North America), *Cluedo* (UK), and the North American tours of *Mrs. Doubtfire*, *Mamma Mia!*, *Company*, *RENT*, *An Officer and a Gentleman*, *Motown*, *Something Rotten!*, *Bandstand*, *R&H's Cinderella*, *White Christmas*, *American Idiot*, *In The Heights* and *Avenue Q*. Produced Julie Andrews, *The Gift of Music*. WLP is led by founding partners Stephen Gabriel and Nancy Gabriel. worklightproductions.com

LIVELY MCCABE ENTERTAINMENT (*Producer*) is a theatrical development and IP management company founded

in 2017 by former Disney executive Michael Barra. The company is best known for its collection of theatrical properties including: *Clue* (based on the 1985 Paramount film and Hasbro game) and it's UK sibling *Cluedo*, the musical adaptation of *Mystic Pizza* (based on the MGM film starring Julia Roberts), country music musical *May We All* (developed with Florida Georgia Line), and Joe Iconis' *Punk Rock Girl!*. Upcoming projects include musical adaptations of the iconic films *Girls Just Want To Have Fun* and *Can't Hardly Wait*. For more info please visit livelymccabe.com

AGED IN WOOD (*Producer*). Partners Robyn Goodman and Josh Fiedler with associate producer Nicole Kramer have produced on Broadway since 2000. Broadway: *Tommy*, *Company* (Tony Award), *Angels in America* (Tony Award), *Avenue Q* (Tony Award), *Rodgers and Hammerstein's Cinderella*, *In The Heights*, *Bengal Tiger at the Baghdad Zoo*, *The Performers*, *High Fidelity*, *Metamorphoses* and more. Currently developing the musicals *Working Girl* and *Nowhere Boy* and a revival of *Jar the Floor* by Cheryl West.

BUCKS COUNTY PLAYHOUSE (*Originally Produced*) has re-emerged as a driving force in regional theatre for original productions of classic plays and musicals and developing new work since its multi-million-dollar restoration in 2012. The Wall Street Journal hailed the Playhouse as "one of the top regional theaters on the East Coast," citing four recent productions in its year's-end "best of" list. It has produced six world premieres, including Candace Bushnell's *Is There Still Sex in the City*, *Rock and Roll Man* and *Other World*.

CLEVELAND PLAY HOUSE (*Developing House*). Founded in 1915 and recipient of the 2015 Regional Theatre Tony Award, Cleveland Play House is America's first professional regional theatre. Throughout its rich history, CPH has remained dedicated to its mission to inspire, stimulate and entertain diverse audiences in Northeast Ohio by producing plays and theatre education programs of the highest professional standards. CPH has produced more than 100 world and/or American premieres, and over its long history more than 12 million people have attended over 1,600 productions.

CENTER THEATRE GROUP

SNEHAL DESAI (*Artistic Director, he/him*) was appointed Center Theatre Group's third artistic director in 2023. As an artistic leader, Snehal has sought to raise awareness on social issues that affect Angelenos through impactful and empowering storytelling. Previously, he was the Producing Artistic Director of East West Players. A Soros Fellow and the recipient of a Tanne Award, Snehal was the Inaugural Recipient of the Drama League's Classical Directing Fellowship. He has served on the boards of the Consortium of Asian American Theaters and Artists (Caata), Theatre Communications Group (TCG), and currently serves on the board of the National Alliance for Musical Theatre (NAMT). Snehal was on the faculty of USC's graduate program in Arts Leadership and is a graduate of the Yale School of Drama.

MEGHAN PRESSMAN (*Managing Director/CEO, she/her*) joined Center Theatre Group in 2019. Previously, she served as Managing Director of Woolly Mammoth Theatre Company (D.C.), Director of Development for Signature Theatre (N.Y.), and Associate Managing Director of Berkeley Rep. She is a graduate of Yale School of Drama/Yale School of Management and serves as a mentor in the Theater Management program. Meghan has served as the Vice-Chair for the Theatre Communications Group Board of Directors and is a member of the Broadway League.

DOUGLAS C. BAKER (*Producing Director, he/him*) joined Center Theatre Group in 1990. Doug is an active member of the Broadway League, the Independent Presenters Network (IPN), and is a proud member of the Association of Theatrical Press Agents and Managers (ATPAM). In 2013, Doug received the Broadway League's prestigious Outstanding Achievement in Presenter Management Award.

GORDON DAVIDSON (*Founding Artistic Director*) led the Taper throughout its first 38 seasons, guiding over 300 productions to its stage and winning countless awards for himself and the theatre—including the Tony Award for theatrical excellence, Margo Jones Award, The Governor's Award for the Arts, and a Guggenheim fellowship. *The Kentucky Cycle* and *Angels in America (Part One)* won the Pulitzer in consecutive years and, in 1994, three of the four plays nominated for the Tony Award for Best Play were from the Taper (*Angels in America* won). In 1989, Gordon took over the Ahmanson and, in 2004, he produced the inaugural season in the Kirk Douglas Theatre.

CENTER THEATRE GROUP, one of the nation's preeminent arts and cultural organizations, is Los Angeles' leading not-for-profit theatre company, which, under the leadership of Artistic Director Snehal Desai, Managing Director / CEO Meghan Pressman, and Producing Director Douglas C. Baker, programs the Mark Taper Forum and the Ahmanson Theatre at The Music Center in Downtown Los Angeles, and the Kirk Douglas Theatre in Culver City. Center Theatre Group is one of the country's leading producers of ambitious new works through commissions and world premiere productions and a leader in interactive community engagement and education programs that reach across generations, demographics, and circumstances to serve Los Angeles. Founded in 1967, Center Theatre Group has produced more than 700 productions across its three stages, including such iconic shows as *Zoot Suit*; *Angels in America*; *The Kentucky Cycle*; *Biloxi Blues*; *Twilight: Los Angeles, 1992*; *Children of a Lesser God*; *Curtains*; *The Drowsy Chaperone*; *9 to 5: The Musical*; and *Bengal Tiger at the Baghdad Zoo*. CenterTheatreGroup.org

STAFF FOR CLUE

THE ARACA GROUP

Matthew Rego Michael Rego Hank Unger
Cristina Vivenzio Megan Rhoads
Kerry Frye Sophie Glassman

WORK LIGHT PRODUCTIONS

Stephen Gabriel Nancy Gabriel
Anièle Fortin-Perkell, Chief Operating Officer & Executive Producer
Matt Kunkel, General Manager
Jordyn David, General Management Assistant
Brian Harlan Brooks Sanjida Chowdhury
Mackenzie Foster Noelle Hedgcock
Kimberly Helms Courtney King Marian Osadebe
Casi Pruitt Mitchell Skolnick Carolyn Smith

LIVELY MCCABE ENTERTAINMENT

Executive ProducerMichael Barra
VP, TheaterAllison Bressi

**TECHNICAL SUPERVISION
PORT CITY TECHNICAL**

Rhys Williams, Vice President of Production
Hunter Storie, Production Manager
Sara Schultz, Assistant Production Manager
Laurence Christopher Ryan George Ryan Johnson
Tom Klonowski Adrienne Maurer Tiffany West

TOUR BOOKING, MARKETING & PUBLICITY BOND THEATRICAL

bondtheatrical.com

TOUR BOOKING

Temah Higgins Mollie Mann
Wendy Roberts
Madison St. Amour Laura Rizzo
Nilescha Alexander

TOUR MARKETING & PUBLICITY

DJ Martin
Marc Viscardi
Steph Kelleher Elisabeth Reyes

CASTING**PEARSON CASTING**

James Pearson, CSA Rosie Pearson, CSA

LEGAL COUNSEL

Lazarus & Harris LLP

Scott Lazarus, Esq. Robert C. Harris, Esq.
Emily Lawson, Esq. Carter Anne McGowan, Esq.
Diane Viale Patrick Wilcox

MUSIC CLEARANCE AND SUPERVISION

Janet Billig Rich and Lisa Moberly for
Loudspeaker Music Group

“Clue (Alternate I)” (a/k/a “Clue Main Title”) Written by John Morris Used by permission of Sony/ATV Harmony (ASCAP). All Rights Reserved.

“Shake, Rattle and Roll” Written by Charles E. Calhoun Used by permission of Mijac Music (BMI), courtesy of Sony/ATV Music Publishing, and Unichappell Music Inc. (BMI) All Rights Reserved.

“Sh-Boom (Life Could Be a Dream)” Written by James Keyes, Claude Feaster, Carl Feaster, Floyd McRae and James Edwards. Used by permission of Unichappell Music Inc. (BMI) All Rights Reserved.

MUSIC INC. (BMI) ALL RIGHTS RESERVED**ADDITIONAL STAFF**

Company ManagerSuzanne Prueter
Assistant Company Manager.....Carleigh Allen
Production Stage ManagerMargot Whitney
1st Assistant Stage ManagerEmily Kritzman
2nd Assistant Stage Manager.....Maria Bella DiVittorio
Substitute Assistant Stage Manager.....Berrit Keller
Substitute Assistant Stage Manager.....Sarah E. T. Jackson
Assistant Director.....Saki Kawamura
Associate Scenic Designer.....Michael Ruiz-del-Vizo
Associate Costume DesignerBryanne Oster-Bainnson
Costume AssistantMegan Rutherford
Associate Lighting Designer.....Nicholas Pollock
Assistant Lighting Designer.....Sam Weiser
Lighting ProgrammerJonah Camiel
Associate Hair, Wig and Makeup Designer.....Cassie Janay Williams
Production CarpenterJack Gilchrist
Production ElectricianRobert Virzera
Production WardrobeCat Lovejoy
Production HairAdrienne Maurer
Head CarpenterNicholas Ray
Assistant Carpenter/Flyman.....Sean Jenkins
Head ElectricianScott Barnett
Assistant Electrician.....Mike Barnes
Head Audio.....Jessica Glynn
Head Props.....John Mark Zink
Head WardrobeJeremy Davis-Towle
Head Hair & MakeupJakey Hicks
Swing Tech.....Lakin Freedle
Accounting.....Withum Smith + Brown, PC
ControllerGalbraith & Co./Jessica Pressman
Social Media.....Marathon Digital/Mike Karns, Melanie Pateiro,
Ava Coploff, Chad Burris
Tour Booking, Marketing & Publicity Office..... BOND Theatrical/Phillip Aleman,
Jenny Bates, Melissa Cohen, Bailey Ford, Harrison Mootoo, Scotland
Newton, Linda Stewart, Jacob Stuckelman, Janiya Wade, Hannah Wallace
HR Consultant.....K+K Reset, Kiah Jones & Karen Robinson
Banking.....FLAGSTAR/Margaret Monigan
Insurance.....The Arts Insurance Program, LLC/Bob Middleton,
Meghan Coleman, Toni Preto
Travel/HousingRoad Rebel, Travel Trust
Payroll ServicesPrestigePEO
Physical TherapyNeurosport NYC, LLC
Production Photographer.....Evan Zimmerman for Murphymade
VideoHMS Media
Merchandise.....The Araca Group

CREDITS AND ACKNOWLEDGEMENTS

Costumes built and provided by Siam Costumes, Christopher Schramm, Gilberto Designs, Arel Studio, Bethany Joy Costumes. Audio Equipment provided by PRG. Lighting and Rigging Equipment provided by Christie Lites. Workboxes provided by Port City Equipment Rental. Scenery built and painted by TTS Studios. Original Props from Cleveland Play House. New Prop builds & modifications from BrenBri Props. Wigs built by Backstage Artistry.

REHEARSED AT PEARL STUDIOS



The Actors and Stage Managers employed in this production are members of Actors' Equity Association, the Union of Professional Actors and Stage Managers of the United States.

The Director and Choreographer are members of the Society of Stage Directors and Choreographers, Inc., an independent national labor union.

The House Managers, Press Agents, and Company Managers employed in this production are represented by the Association of Theatrical Press Agents & Managers.

The following employees are represented by the International Alliance of Theatrical Stage Employees, Moving Picture Machine Operators, Artists and Allied Crafts of the United States, its Territories and Canada, AFL-CIO, CLC: Stage Crew Local 33; Treasurers and Ticket Sellers Local 857; Wardrobe Crew Local 768; Make-up Artists and Hair Stylists Local 706.

United Scenic Artists represents designers and scenic artists for the American Theatre.

This production is produced by a member of The Broadway League in collaboration with our professional union-represented employees.

Center Theatre Group is a member of the League of Resident Theatres (LORT), the American Arts Alliance, the Broadway League, Independent Producers' Network (IPN), and the Theatre Communications Group (TCG).

CTG FWD

THE 7 Fingers

Duel Reality

ALL'S FAIR IN LOVE AND WAR

DIRECTED BY SHANA CARROLL

A LES 7 DOIGTS DE LA MAIN PRODUCTION
ORIGINALLY PRODUCED AND CREATED WITH

ONE CTG ONE LA

TICKETS ON SALE NOW!
SEP 11 — 22
AHMANSONTHEATRE.ORG

ONE CTG ONE LA

AHMANSON
DUEL REALITY
SUTTON FOSTER IN
ONCE UPON A MATTRESS
BERNADETTE PETERS &
LEA SALONGA IN
STEPHEN SONDHEIM'S
OLD FRIENDS
LIFE OF PI
PARADE

TAPER
GREEN DAY'S
AMERICAN
IDIOT
PRODUCED IN COLLABORATION WITH
DEAF WEST THEATRE
FAKE IT
UNTIL YOU
MAKE IT
HAMLET

DOUGLAS
CAT KID
COMIC CLUB
THE MUSICAL
EL OTRO OZ

THE 2024/25 SEASON

Bernadette Peters and Lea Salonga
star in Cameron Mackintosh's Production of *Stephen Sondheim's Old Friends*.
Photo by Danny Kaan.

2024/25 ONE CTG SUBSCRIPTION PACKAGES NOW ON SALE!
CTGLA.ORG

ARTISTIC

LINDSAY ALLBAUGH* Associate Artistic Director
TIFFANY SLAGLE° Artistic & Literary Administrative Assistant
CASEY NICHOLAW, PHYLCIA RASHAD,
RANDOLPH MEREDYTH-DRAKE Executive Assistant to the
Artistic Director
PAULA VOGEL Associate Artists
PAIGE VEHLEWALD Artistic Programs Manager

EXECUTIVE

CAMILLE SCHENKAN* Deputy Managing Director
KHANISHA FOSTER Director of Equity,
Belonging & Engagement
A'RAELLE FLYNN-BOLDEN Staff Programs Manager
NAIMA OROZCO-VALDIVIA° Temporary Executive Programs Associate
CHRISTOPHER CID Executive Office Fellow

MANAGEMENT

NAUSICA STERGIOU* General Manager
ERIC SIMS* Ahmanson Theatre Presentations Manager
KATIE SOFF* Associate General Manager
JEFFREY UPAH* General Management Associate
KIARA BRYANT Company Manager
TAYLOR ANNE CULLEN Temporary Assistant Company Manager

EDUCATION AND COMMUNITY PARTNERSHIPS

JESUS REYES* Director of Learning and Community Partnerships
TRACI KWON* Arts Education Initiatives Director
AURORA ILOG Creative Workforce Initiatives Director
MEIGHAN LA ROCCA Program Manager
COURTNEY CLARK° Digital Learning Manager
NATALIA QUINTERO-RIESTRA Education & Community
Partnerships Coordinator
NEVAEH GUTIERREZ Education Data Analysis Intern
ESTELA GARCIA, CHRISTINE BREIHAN Resident Teaching Artists
ZACHARY BONES, RAMY EL-ETREBY, SARA GUERRERO
AJA HOUSTON, JOHNATHON L. JACKSON, DAVID JIMENEZ°
CARENE ROSE MEKERTICHYAN, MARA PALMA,
ROBERT PATERNO, TARA RICASA, TIANA RANDALL-QUANT,
MONIQUE SYPKENS Teaching Artists

PRODUCTION

JOE HAMLIN* Director of Production
SHANNON G. BICKNELL Production Manager
CAMBRIA CHICHI° Production Supervisor
ISAAC KATZANEK Technical Director

SHAWN ANDERSON* Head Carpenter (Ahmanson Theatre)
SCOTT LUCAS Head Properties (Ahmanson Theatre)
JARED BATTY Head Electrician (Ahmanson Theatre)
ROBERT SMITH* Head Sound (Ahmanson Theatre)
SHANE ANDERSON Head Flyrail (Ahmanson Theatre)
MICHAEL GARDNER* Wardrobe Supervisor (Ahmanson Theatre)
MARY BORGIA Hair & Make-up Supervisor (Ahmanson Theatre)
CHRISTINE L. COX* House Manager (Ahmanson Theatre)
EMMET KAISER* Head Carpenter (Mark Taper Forum)
MARY ROMERO Head Properties (Mark Taper Forum)
AARON STAUBACH* Head Electrician (Mark Taper Forum)
CHRISTIAN LEE Head Sound (Mark Taper Forum)
LORETTA BUSSEN Wardrobe Supervisor (Mark Taper Forum)

MERRIANNE NEDREBERG* Shop Director
KATE REINLIB Associate Prop Director
ERIC BABB° Assistant Prop Director
RAUL VEGA MARTINEZ° Shop Supervisor
SHANTA FARIA DE SA Costume Shop Manager
CAYLYN DABNEY Resident Assistant Costume Designer
ASHPHORD JACOWAY Costume Shop Coordinator

OPERATIONS

PETER WYLIE Operations & Facilities Director
CHASE ANDERSON-SHAW Kirk Douglas Theatre Manager
VANESSA DE LOERA Facilities Associate
JULIO A. CUJELLAR* Facilities Assistant
JASMINE BRAFF Operations Manager
NATALIE MARCEAU, D'ANGELO ANDERSON,
SIMON J.O. MARTIN, REGINA NILES Drivers
VANESSA BRADCHULIS, OLIVIA CHOATE,
PRESSLY COKER, MONICA GREENE, PAT LOEB,
TWN POPE, SAM UDERO Stage Door Attendants

FINANCE, INFORMATION TECHNOLOGY, AND HUMAN RESOURCES

CHERYL SHEPHERD Chief Financial Officer
PETER BANACHOWSKI Controller
DENICE BEHDAD Assistant Controller
ANAHITA ASHRAFIPOUR Senior Accountant
XOCHITL ORTEGA Accounts Payable Supervisor
KERRY LARICK° Accounting Assistant
JESSICA HERNANDEZ Payroll Manager
JUAN MARTINEZ Payroll Specialist

TOM MEGALE IT Director
JANELLE CABRERA TORRES Tessitura & IT Support
Web Administration Director
JOEY SOLANO Digital Product Manager
CHIMA OMEAKU Help Desk Support
CRIS SPACCA* Tessitura & IT Support
KEVIN WONG IT Inte

JODY HORWITZ* Director of Human Resources
MOSS ADAMS Auditor
MICHAEL C. DONALDSON, LISA A. CALLIF Legal Counsel
GIBSON, DUNN & CRUTCHER Legal Counsel

INSTITUTIONAL ADVANCEMENT

SARAH SULLIVAN Director of Institutional Advancement
RICKY CARTER Director of Development
CRYSTAL DIAZ Director of Events
PAMELA KUHR Director of Annual Giving
KATASHA NELSON Director of Advancement Operations
PAULA MATALLANA Associate Director of Institutional Grants
ELIZABETH DELORUSSO* Major Gifts Officer
NICOLE SCIPIONE* Senior Individual Giving Officer
OYE EHIKHAMHEN Individual Giving Officer
ZAIN PATEL Individual Giving Officer
CHRISTOPHER ECKHART Donor Communications Manager
WENDY HUI Grants Manager
MIKE RATTERMAN Telefundraising Manager
BK DAWSON Senior Analyst, Gift & Accounting Reporting
NICKI BONURA Advancement Associate

HAILEY BRUNSON Annual Giving Coordinator
ALICE PELAYO Donor Liason & Institutional
Advancement Assistant
IRENE CHO Executive Assistant
KRISH ADITYA Donor Events Intern
AL BERMAN*, BRAD GRIFFITH, VARTAN MERJANIAN,
BENJAMIN SCHWARTZ, PAUL VITAGLIANO Donor Advisors

MEDIA AND CONTENT

BRETT WEBSTER Director of Media and Content
JESSICA DOHERTY° Associate Content Director
BOBBY MARTINEZ Content Associate
LILY JONES Media & Content Intern
DEANNA McCLURE Design Director
JAVIER VASQUEZ Digital Content Producer
LILA WAKILL Senior Graphic Designer
CINDY ANDRADE Graphic Designer
CHEYNE GALLARDE Graphic Designer

DAVIDSON & CHOY PUBLICITY
TIM CHOY, PETER GOLDMAN,
VICTORIA WESTBROOK Publicity Consultants

MARKETING & SALES

GARRETT COLLINS Director of Marketing and Sales
CANDICE WALTERS* Associate Director, Marketing Operations
ANDREA ROYER Senior Manager,
Audience Development & Marketing Events
DEVANY HARDEN° Manager, CRM & Email Marketing
KATHARINE MEANS° Advertising Manager
PETER SULLIVAN Marketing Coordinator
SIENA TAYLOR Theatre Archival Intern
CAROLINE THOMPSON/IMPACT 123 Media Planning

SKYPP CABANAS* Senior Manager, Ticket Operations
TINTIN NGUYEN Ticketing Operations Coordinator
SANDY CZUBIAK* Audience & Subscriber Services Director
JENNIFER BAKER* Audience Services Senior Supervisors
JONATHAN FLORES Audience Services Assistant Supervisor
JURGEN SANTOS, CHRISTIAN UNGER Audience Services Sales Associate
JESSICA ABROMAVICH, JUSTINE PEREZ* Donor Associates
JOSHUA BADILLO, CLAY BUNKER,
FRANK ENSEMBERGER, DANIEL GARCIA,
MICHAEL MUNOZ, SAMUEL ROQUE, JURGEN SANTOS,
CHRISTINA WRIGHT Audience Services Representatives
DANUTA SIEMAK* Subscriber Services Senior Supervisor
CHRISTINA GUTIERREZ* Subscriber Services Supervisor
LIGIA PISTE* Subscriber Services Senior Representative
MICHAEL VALLE* Box Office Treasurer
KEANA JACKSON, YULIZA BARRAZA 1st Assistant Treasurers
KAITLYN GALVEZ, MICHAEL KEMPISTY*
RICHARD RUBIO, LUIS ESPINOZA 2nd Assistant Treasurers
JEFFREY LIMONCELLI, KATHLEEN LITTLEFIELD,
DIANE WARD* Subscription Sales Representatives
SD&A TELESERVICES, INC. Outbound Sales Partner

ARTISTIC DEVELOPMENT & COMMISSIONS

As part of our commitment to supporting new plays and playwrights, we foster and develop a broad range of theatrical work from diverse artists locally, nationally, and abroad.

Artists creating new work commissioned by Center Theatre Group this season:

AZIZA BARNES	YOUNG JEAN LEE	CYNTHIA GRACE ROBINSON
LISA D'AMOUR	MATTHEW LOPEZ	SARAH RUHL
LARISSA FASHORSE	ROGER Q. MASON	T.TARA TURK-HAYNES
JENNIFER HALEY	TAHIRH MOELLER	LUIS VALDEZ
ALSHEA HARRIS	JANINE NABERS	PAULA VOGEL
GERALDINE ELIZABETH INOA	QUI NGUYEN	KAREN ZACARIAS
LISA KRON	LYNN NOTTAGE	
KIMBER LEE	MARCO RAMIREZ	

LA WRITERS' WORKSHOP

Since 2005, we have invited local playwrights to spend a year researching and writing a new work with the feedback of their fellow writers and artistic staff as part of our L.A. Writers' Workshop.

Learn more at CTGLA.org/Artists.

2023/24 COHORT:

AMY BERRYMAN	CHRISTOPHER OSCAR PEÑA
INDA CRAIG-GALVÁN°	RAMIZ MONSEF
ISAAC GÓMEZ	JASMINE SHARMA

LA ARTIST RESIDENCIES

DIANA BURBANO
LARISSA FASHORSE
MICHAEL FEINSTEIN
MICHAEL JOHN GARCÉS
DANIEL ALEXANDER JONES
MADELINE SAYET
KRISTINA WONG

CRITICAL MASS PERFORMANCE GROUP
ENSEMBLE STUDIO THEATRE LA
IN PARTNERSHIP WITH CHALK REP
NATIVE VOICES AT THE AURY