

THE CORNLEY UNIVERSITY DRAMA SOCIETY PRESENTS



THE MURDER AT HAVERSHAM MANOR

CAST

INSPECTOR CARTER - **CHRIS BEAN**
CHARLES HAVERSHAM - **JONATHAN HARRIS**
THOMAS COLLEYMOORE - **ROBERT GROVE**
PERKINS - **DENNIS TYDE**
FLORENCE COLLEYMOORE - **SANDRA WILKINSON**
CECIL HAVERSHAM - **MAX BENNETT**
ARTHUR THE GARDENER - **MAX BENNETT**

CREATIVE

WRITER - **SUSIE H.K. BRIDESWELL**
PRODUCER - **WAYNE BLEXT**
DIRECTOR - **CHRIS BEAN**
DESIGNER - **CHRIS BEAN**
COSTUME DESIGNER - **CHRIS BEAN**
PROP MAKER - **CHRIS BEAN**
BOX OFFICE MANAGER - **CHRIS BEAN**
PRESS & PR - **CHRIS BEAN**
DRAMATURGY - **CHRIS BEAN**
VOICE COACH - **CHRIS BEAN**
DIALECT COACH - **CHRIS BEAN**
FIGHT CHOREOGRAPHER - **CHRIS BEAN**
REHEARSAL ROLE 'MR FITZROY' - **CHRIS BEAN**
STAGE MANAGER - **ANNIE TWILLOIL**
LIGHTING & SOUND OPERATOR - **TREVOR WATSON**

THIS PRODUCTION WAS MADE POSSIBLE BY THE BRITISH-AMERICAN
CULTURAL EXCHANGE PROGRAM

A LETTER FROM THE PRESIDENT

Hello and welcome to *The Murder at Haversham Manor*.

We are thrilled that the Cornley University Drama Society is performing in the USA. We can only apologise to those involved in the production of *Equus* originally scheduled for this week, which due to a clerical error, is now being performed in the Cornley University Gymnasium. We hope there are no hard feelings and we've left the vaulting horse out for you. The question everyone at Cornley has been asking is: are we ready for a venue of this size? The answer is "yes." The cast and I rehearsed for weeks using only the best acting teachings to inspire us. We read that Sanford Meisner once said, "Acting is behaving truthfully," so we immediately changed all the names in the play to our own names and cut the murder, the manor house setting and any other element that we hadn't personally experienced. We then found the piece rather flat, and it only ran at 17 minutes. So we went back to the Meisner book and we realized the full quote was in fact: "Acting is behaving truthfully... under imaginary circumstances," so we reinstated the cuts and we were then quickly back on track.

We found the teachings of Michael Chekhov less confusing. He says, "An actor has to burn inside with an outer ease." So that evening it was vindaloo all round at the Sunam Balti House on Cornley High Street. However, try as we did to not react to our burning insides, it was certainly noticeable that we were all in significant discomfort, which just goes to show how tough acting can be. At the end of the evening, Dennis was actually sick in the restaurant bathrooms. We always knew he was one of the weaker actors.

All this hard work and preparation has left us with an ensemble piece that has achieved such critical acclaim as "VERY INTERESTING" from Mr. Harwood, esteemed head of Design Technology at Cornley University, and "RATHER UNSETTLING" from real-life police chief Mr. Greaves of the Cornley Volunteer Police Force. I'm sure that with a full audience, the piece will truly bring down the house.

Chris Bean

President of the Cornley University Drama Society & Director of *The Murder at Haversham Manor*



Robert Grove's School For Acting Perfectly



Do you cry out into the void, "I WISH TO ACT!"?

I can hear you.

I teach the four approved acting skills: Reacting, Gesturing, Emotioning and Acting

For more information on my courses, contact me via Twitter @RobertGoodActor



TELL THE WORLD
WHAT YOU
THOUGHT OF
THE SHOW!

**AT A LOSS FOR WORDS?
WE'RE HAPPY TO HELP!**

WORDS TO USE:

Good, best, awesome, exciting, inspiring, lovely, important, worthwhile, tasteful, tasty, professional, proportionate, rare, well-done, like-a-warm-bath

WORDS NOT TO USE:

Bad, worst, awful, excreting, perspiring, drab, impotent, worthless, tasteless, icky, amateurish, error, eek, queasy, vomit, dry, moist



#BwayGoesWrong

**CHRIS BEAN**

INSPECTOR CARTER & DIRECTOR

Touring debut! Chris is the newly elected head of the Drama Society. For tonight's show, he served as the voice coach, dialect coach,

fight choreographer, casting director and costume designer. He also plays the lead role and, of course, directed. The Society would like to thank Chris for his remarkable passion and efforts. Credits within the University: Hamlet in *Hamlet*, Macbeth in *Macbeth* and Othello in *Othello*.

**MAX BENNETT**

CECIL HAVERSHAM

Touring debut! Max is in his first year at Cornley University where he is studying human geography and crime. He is an avid fan of

films, and his favourite is *The Legend of Bagger Vance*, which he's seen 27 times. This is Max's first production with the Drama Society, and he is very glad to have donated a large portion of his recent inheritance to help the show reach Broadway.

**ROBERT GROVE**

THOMAS COLLEYMOORE

Touring debut! A member of the Cornley Drama Society for three years, Robert uses the Stanislavsky method. Credits include Lame

Horse in *Black Beauty*, Victorian Policeman in *Madame Tussauds Chamber of Horror – Live!*, Dopey in *Snow White and The Tall Broad Gentlemen* and Augustus Gloop in *Charlie & The Chocolate Factory*. Robert's next performance will be as Godot in a newly self-written sequel to Beckett's classic.

**DENNIS TYDE**

PERKINS

Touring debut! After failing the tryouts for the football, cricket, volleyball and basketball teams, Dennis decided to join the Drama

Society. Dennis does not live in the Cornley halls of residence and commutes in daily from his parents' house. He hopes the Society will give him the chance to meet like-minded people. Dennis' only stage credit dates back to 1995 when he appeared in his primary school nativity. Credit: Shepherd.

**JONATHAN HARRIS**

CHARLES HAVERSHAM

Touring debut! Jonathan works as a model and is therefore excited to learn transferrable skills by appearing in *The Murder at*

Haversham Manor. He is no stranger to acting and appeared in *Casualty* when he was just 5 years old. Jonathan also performed with Emote, another local theater company, in *A Midsummer Night's Stamina*, which featured a cast of 14 pedalling exercise bikes for the full two-hour performance.

**ANNIE TWILLOIL**

STAGE MANAGER

Touring debut! The unsung hero of the Society, Annie has designed, built, painted, stage managed and costumed every single Society show

in the last three years. Her hard work and dogged determination behind-the-scenes lies behind so much of the Society's success. After *The Murder at Haversham Manor*, Annie will begin an internship at the Oregon Shakespeare Festival.

**SANDRA WILKINSON**

FLORENCE COLLEYMOORE

Touring debut! This is Sandra's 11th season with the Cornley University Drama Society, during which she has proudly performed roles such

as Snow White in *Snow White and The Tall Broad Gentlemen*, Virginia Woolf in *Who's Afraid of Virginia Woolf?* and The Cow in *Jack and the Bean*. Sandra has been performing from a very young age, since her mother appeared in *A Winter's Tale* pregnant.

**TREVOR WATSON**

LIGHTING & SOUND OPERATOR

Touring debut! Trevor is only participating in *The Murder at Haversham Manor* to earn

much needed extra credit for his electronics module in order to pass his engineering course at Cornley University. Once he has passed the course, he will not continue to work with the Drama Society. Trevor credits his success to his sunny disposition and his positive outlook on life.



friend.
insider.
visionary.

you!

INTRODUCING A NEW MEMBERSHIP EXPERIENCE AT CENTER THEATRE GROUP

As a nonprofit organization, Center Theatre Group relies on the philanthropy of people just like YOU.

Your tax-deductible contribution of \$100 or more helps ensure that Center Theatre Group continues to bring the highest quality theatre to our community. And, as a member, you will unlock benefits that enhance your theatregoing experience, from behind-the-scenes members-only events to the best seats in the house—and more!

Learn more at CTGLA.org/membership

QUESTIONS?

Call our Membership Concierge
at 213.972.7564 or email membership@CTGLA.org

friends

Friends get first access to tickets before the general public plus invitations to members-only events, including backstage tours and rehearsals. *Join today with a gift of \$100 or more.*

insiders

Insiders enjoy a year-round VIP experience with access to the best seats for our shows, concierge service for house seats at New York and London productions, and special behind-the-scenes events. *Join today with a gift of \$2,500 or more.*

visionaries

Visionaries have the ultimate access to our artists, shows, programs, and staff, with premium seating for our productions, including use of The Founders' Room at the Ahmanson, and invitations to private salon-style artist events. *Join today with a gift of \$15,000 or more.*

**CENTER
THEATRE
GROUP**

2018/19 SEASON

AHMANSON

FIRST SEASON PRODUCTION

AIN'T TOO PROUD

The Life and Times of The Temptations

Book by Dominique Morisseau

Music and Lyrics from The Legendary
Motown Catalog

Choreographed by Sergio Trujillo

Directed by Des McAnuff

Aug 21 – Sep 30, 2018

SECOND SEASON PRODUCTION

DEAR EVAN HANSEN

Book by Steven Levenson

Music and Lyrics by Benj Pasek and Justin Paul

Directed by Michael Greif

Oct 17 – Nov 25, 2018

THIRD SEASON PRODUCTION

COME FROM AWAY

Book, Music, and Lyrics by Irene Sankoff
and David Hein

Directed by Christopher Ashley

Nov 28, 2018 – Jan 6, 2019

FOURTH SEASON PRODUCTION

New Adventures
Matthew Bourne's

CINDERELLA

Music by Prokofiev

Feb 5 – Mar 10, 2019

FIFTH SEASON PRODUCTION

The Lincoln Center Theater Production of

FALSETTOS

Music and Lyrics by William Finn

Book by William Finn and James Lapine

Directed by James Lapine

Choreographed by Spencer Liff

Apr 16 – May 19, 2019

SIXTH SEASON PRODUCTION

INDECENT

By Paula Vogel

Directed by Rebecca Taichman

Jun 5 – Jul 7, 2019

SEVENTH SEASON PRODUCTION

THE PLAY THAT GOES WRONG

By Henry Lewis, Jonathan Sayer,
and Henry Shields

Tour Directed by Matt DiCarlo

Jul 9 – Aug 11, 2019

THE PLAY THAT GOES WRONG



PHOTOS BY MATTHEW MURPHY

SEASON SPONSOR
Bank of America

OFFICIAL AIRLINE SPONSOR
DELTA

MALIBU
FAMILY
WINES



MICHAEL RITCHIE Artistic Director | **MEGHAN PRESSMAN** Managing Director | **DOUGLAS C. BAKER** Producing Director
GORDON DAVIDSON Founding Artistic Director

KEVIN MCCOLLUM J.J. ABRAMS KENNY WAX STAGE PRESENCE LTD. CATHERINE SCHREIBER
KEN DAVENPORT DOUBLE GEMINI PRODUCTIONS/DEROY BRUNISH
DAMIAN ARNOLD/TC BEECH GREENLEAF PRODUCTIONS/BARD ROTH
MARTIAN ENTERTAINMENT/JACK LANE/JOHN YONOVER LUCAS MCMAHON

PRESENT
A MISCHIEF THEATRE PRODUCTION OF
THE PLAY THAT GOES
WRONG

BY HENRY LEWIS, JONATHAN SAYER, AND HENRY SHIELDS

STARRING

SCOTT COTE PEYTON CRIM BRANDON J. ELLIS ANGELA GROVEY
NED NOYES JAMIE ANN ROMERO EVAN ALEXANDER SMITH YAEGEL T. WELCH
BLAIR BAKER JACQUELINE JARROLD SID SOLOMON MICHAEL THATCHER

SCENIC DESIGN
NIGEL HOOK

COSTUME DESIGN
ROBERTO SURACE

LIGHTING DESIGN
RIC MOUNTJOY

SOUND DESIGN
ANDREW JOHNSON

ORIGINAL MUSIC
ROB FALCONER

PRODUCTION STAGE MANAGER
JEFF NORMAN

PRODUCTION MANAGEMENT
DAVID BENKEN

UK PRODUCTION MANAGEMENT
DIGBY ROBINSON

GENERAL MANAGEMENT
BESPOKE THEATRICALS

MARKETING SERVICES
BDB MARKETING

TOUR MARKETING & PRESS
ALLIED TOURING

TOUR BOOKING AGENCY
THE BOOKING GROUP

TOUR DIRECTED BY
MATT DICARLO

ORIGINAL BROADWAY DIRECTION BY
MARK BELL

THE PLAY THAT GOES WRONG WAS ORIGINALLY PRESENTED BY MISCHIEF THEATRE AT THE OLD RED LION THEATRE, LONDON.
EXECUTIVE DIRECTOR DAMIEN DEVINE, ASSOCIATE DIRECTOR NICK THOMPSON

July 9 – August 11, 2019 **AHMANSON THEATRE**

CAST

(in order of appearance)

Trevor..... BRANDON J. ELLIS
Chris..... EVAN ALEXANDER SMITH
Jonathan..... YAEGEL T. WELCH
Robert PEYTON CRIM
Dennis..... SCOTT COTE
Sandra..... JAMIE ANN ROMERO
Max NED NOYES
Annie..... ANGELA GROVEY

UNDERSTUDIES

*Swings and understudies never substitute for listed performers
unless a specific announcement is made at the time of the appearance.*

for Trevor—MICHAEL THATCHER, YAEGEL T. WELCH

for Chris—SID SOLOMON

for Jonathan—SID SOLOMON, MICHAEL THATCHER

for Robert—BRANDON J. ELLIS, MICHAEL THATCHER

for Dennis and Max—SID SOLOMON, MICHAEL THATCHER

for Sandra and Annie—BLAIR BAKER, JACQUELINE JARROLD

There will be one 20-minute intermission.

WHO'S WHO



SCOTT COTE (*Dennis*). National tours: *Something Rotten!*, *Chitty Chitty Bang Bang*. Regional credits: *The Producers* (Paper Mill Playhouse), *Guys and Dolls* (Goodspeed), *Noises Off* (Pittsburgh Public), *Lend Me a Tenor* (Bay Street), *The Music Man* (Flat Rock Playhouse), *Boeing Boeing* (Northern Stage), *The Drowsy Chaperone* (Human Race Theatre).



PEYTON CRIM (*Robert*). New York: *Brigadoon* (City Center Encores!), *Finian's Rainbow*, *On a Clear Day...* (Irish Rep). Selected regional: *Mary Poppins* (Paper Mill Playhouse), *Sweeney Todd* (The Gateway Playhouse), *Sunset Blvd.* (Musical Theatre West), *The Music Man*, *Peter Pan*, *Ring of Fire*. Graduate of Oklahoma City University. Insta: @MrPeytonCrim, Twitter: @TheRealPeytonC



BRANDON J. ELLIS (*Trevor, u/s Robert*). Broadway: *Bandstand*, *Once*, *Company*. West End: *Once*. Off-Broadway: *Of Mice and Men*, *Balls: The Musical?* (writer). TV/film: *Iron Fist*, *Dietland*, *Vinyl*, *30 Rock*, *The Naked Brothers Band*, *She Wolf Rising*, *The Ferryman*. BFA acting, UNC-Greensboro. Love to Mom, Jenn, Austin. "For my Dad." Proud AEA.

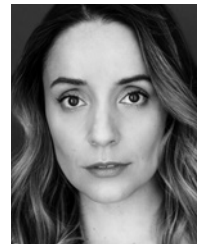


ANGELA GROVEY (*Annie*). Broadway: *Escape to Margaritaville*, *Leap of Faith*. National tour: *Newsies* (Medda). Film/TV: *High Maintenance*, *Ray Donovan*, ...*Kimmy Schmidt*, *Iron Fist*, *Joyful Noise*, *30 Rock*, *The Unusuals*. Some theatre: Irish Rep, City Center Encores!, *Radio City Christmas Spectacular*, Chicago Shakespeare, Vineyard, Paper Mill, Goodspeed. Insta: @angelagrovey, Twitter: @angelagrovey, angelagrovey.com



NED NOYES (*Max*). Broadway: *The Play That Goes Wrong*, *You Can't Take It with You*. National tour: *Cabaret* (Roundabout). Off-Broadway: Mint Theater (four productions). Regional: Steppenwolf Theatre, McCarter Theatre, Shakespeare Theatre (D.C.), Chicago Shakespeare Theater (among others).

Film: *The Post* (directed by Steven Spielberg). TV: *Boardwalk Empire*, *Alpha House*. Training: Northwestern University.



JAMIE ANN ROMERO (*Sandra*). Off-Broadway: Second Stage Theater. Regional: Paper Mill Playhouse, Oregon Shakespeare Festival, Denver Center Theatre Company, Utah Shakespeare Festival, Colorado Shakespeare Festival, Arvada Center. International: Maxim Gorky Theatre Vladivostok, Russia. Television: *The Punisher*, *House of Cards*. Film: *Viper Club*. "Love and thanks to Benjamin and my family." Insta: @annjamie, jamieannromero.com



EVAN ALEXANDER SMITH (*Chris*). Broadway: *Amazing Grace*. National tour: *Dirty Dancing* (Robbie). Selected regional: *The Toxic Avenger* (title role, Toronto Company), *Joseph...* (Joseph, Drury Lane Theatre), *Baskerville* (Cleveland Play House/Cincinnati Playhouse), *Ragtime* (Younger Brother), *Lady Windermere's Fan* (Shaw Festival). More info and complete credits at EvanAlexanderSmith.com. Thanks to HCKR. Love to Sarah. Twitter/Instagram: @iamevansmith



YAEGEL T. WELCH (*Jonathan, u/s Trevor*). Broadway (*TPTGW*), Lincoln Center, The Acting Company, Signature Theatre Company, Seattle Rep, Playmakers, True Colors/Alliance Theatre, Studio Theatre, Everyman Theatre (Company Member). TV/film: *The Blacklist*, *Blue Bloods*, *Madam Secretary*, *The Knick*. Education: BA, Morehouse College; MFA, Brandeis University; MFA, Academy for Classical Acting. Insta: @yaegelwelch, Twitter: @yaegelwelch



BLAIR BAKER (*Assistant Stage Manager, Understudy*). Thrilled to join *TPTGW*. Credits: *The Humans* (Broadway, Roundabout), *Oleanna* (Broadway, Center Theatre Group), title role in *Hamlet* (SheNYC), *The Soap Myth* (opposite Ed Asner), *Chapter Two* (directed by Marsha Mason). blairbaker.info, @blaircbaker



JACQUELINE JARROLD (*Understudy*). Broadway: *The Cherry Orchard*. Regional: The Shakespeare Theatre of D.C. Back in New York, Jacqui makes her artistic home with AmiosNYC. Training: Northwestern University. More at jacquelinejarrold.com. Insta: @jacquijarrold



SID SOLOMON (*Understudy*) received his training at New York's LaGuardia Arts High School and Minneapolis' Guthrie Theater. Proud Vice President of Actors' Equity Association and core member of #FairWageOnStage. More at SidSolomon.com.



MICHAEL THATCHER (*Fight Captain, Understudy*). Broadway: *TPTGW*. Off-Broadway: *Julius Caesar* (NYSF), *The Time Machine* (NYMF). National tours: *Guys and Dolls*, *A Christmas Story*. Regional: Utah, Texas, Virginia Shakespeare festivals. TV: *Quantico*. MFA, U of Houston PATP. Insta: @thatched44

HENRY LEWIS (*Co-Author*) is an Olivier Award-winning writer, actor, and the Artistic Director of Mischief Theatre. Henry trained at LAMDA. His recent credits include writer and actor for *The Play That Goes Wrong* (Broadway, West End, and UK/international tour—winner of Best New Comedy at the Olivier Awards 2015 and WhatsOnStage Awards 2014), *Peter Pan Goes Wrong* (BBC One, West End/UK tour/Pleasance London—nominated for Best New Comedy at the Olivier Awards 2016), *The Comedy About a Bank Robbery* (West End—nominated for Best New Comedy at the Olivier Awards 2017), *Christmas Carol Goes Wrong* (BBC One), *Royal Variety Performance* (ITV), *Keep It in the Family* (ITV), *Mischief Movie Night* (West End/UK tour—nominated for Best New Comedy at the Olivier Awards 2018), actor and producer for *Mercury Fur* (Trafalgar Studios—nominated for Best Production Off-West End Awards), actor for *Beasts & Beauties* (Hampstead Theatre), and producer of Tracy Letts' *Superior Donuts* (Southwark Playhouse—winner of Peter Brook Empty Space Award).

JONATHAN SAYER (*Co-Author*). Training: LAMDA. Jonathan is an Olivier Award-winning writer and the Company Director of Mischief Theatre working as a writer, actor, and producer. Theatre includes *Mischief Movie Night* (Arts Theatre), *The Comedy About a Bank Robbery* (Criterion Theatre), *The Play That Goes Wrong* (Lyceum Theatre, Broadway run, Duchess Theatre, West End run, UK and international tour—writer/actor, Olivier Awards and WhatsOnStage Award Best New Comedy), *Peter Pan Goes Wrong* (UK tour and West End—writer/actor), *The Nativity Goes Wrong* (writer, Mischief Theatre and Reading Rep co-production), *Lights! Camera! Improvise!* (various venues, actor, improviser, producer, Spirit of the Fringe Award 2013, Best Improv Show Award 2012), and *Happy Birthday Simon* (Orange Tree, actor). Television includes *Peter Pan Goes Wrong* (BBC One, writer/actor/associate producer), *The Royal Variety Performance: The Play That Goes Wrong* (ITV, writer and actor), *Keep It in the Family* (writer, ITV), *A Christmas Carol Goes Wrong* (BBC One, writer/actor). Radio includes *The Christmas Show That Goes Wrong* (BBC Radio 2).

HENRY SHIELDS (*Co-Author*) trained at LAMDA. He is an award-winning writer and has been a member of Mischief Theatre since 2009. Theatre includes *The Play That Goes Wrong* (writer/actor, winner 2015 Olivier Award and WhatsOnStage Award for Best New Comedy), *Peter Pan Goes Wrong* (writer/actor, 2016 Olivier Award nominee for Best New Comedy), *The Comedy About a Bank Robbery* (actor/writer, 2017 Olivier Award nominee Best New Comedy), *Mischief Movie Night* (actor, 2018 Olivier Award nominee for Best New Comedy), *The Nativity Goes Wrong* (writer), *The Comedy About a Bank Robbery* (writer/actor), and *The Busy Body* (Southwark Playhouse). Television includes *The Royal Variety Performance 2016: The Play That Goes Wrong*, *Holby City* (BBC), *Keep It in the Family* (ITV), *Peter Pan Goes Wrong* (BBC), and *A Christmas Carol Goes Wrong* (BBC). Henry is currently working on, and developing, a number of new projects.

MATT DICARLO (*Tour Director*) is overjoyed that things are going *Wrong* all over North America! As the production stage manager, Matt helmed the Broadway production of *The Play That Goes Wrong* for the first year and a half of its run. He served as the associate director for the 2017–2018 national tour of the Tony Award-winning revival of *The Color Purple*, which he also stage managed on Broadway. Other Broadway credits include *Honeymoon in Vegas* and *Rock of Ages*. Regional theatre work includes

World premieres at La Jolla Playhouse and American Conservatory Theater, and 12 productions at Paper Mill Playhouse. Matt has his BFA from Rutgers University and is on the faculty at SUNY Purchase. He has supervised dozens of events with Broadway Cares/Equity Fights AIDS, Target, and David Stark Design. Matt is endlessly grateful to the producers of *The Play That Goes Wrong* and to Mischief Theatre for giving us the outlet and opportunity to make people laugh. Love to Joey.

MARK BELL (*Original Broadway Director*). Trained at École Internationale de Théâtre, Jacques Lecoq and was co-Artistic Director of Liquid Theatre. Liquid shows include *If You Were Mine* (ACW), *Feeding Time* (BAC), *Endgame* (BAC), and *Crave* (BAC and touring). Directing includes *Che Disastro di Commedia* (Theatro Greco, Rome); *Waiting for Waiting for Godot* (St. James Theatre, Off-West End); *The Comedy About a Bank Robbery* (West End); *Ma Este Megbukunk* (Central Színház, Budapest); *The Play That Goes Wrong* (West End); *Blue Blood* by Anna Jordan (Riverside); *The Revenger's Tragedy* (RCSSD, London); *A Servant of Two Masters*, *Scapino* (CMU, Pittsburgh); *The Snowfall* (Etcetera). Mark has taught and directed at LAMDA, Royal Central School of Speech and Drama, UEA, and East 15 acting schools. markbell.info

NIGEL HOOK (*Scenic Design*) has designed an enormous range of drama, musical, and opera productions throughout the UK, Europe, and the Brits Off-Broadway (*Unsuspecting Susan*) season in New York. West End credits: *Spread a Little Happiness* (Whitehall); *Philadelphia, Here I Come!* (Wyndhams); *Elegies for Angels Punks and Raging Queens* (Criterion); *Ferry Across the Mersey* (Lyric); *The Boys in the Band* (Aldwych); *Party and When Pigs Fly* (Arts); *Forbidden Broadway* (Albery); *Pageant* (Vaudeville); *Steptoe and Son* (Pinter); and the 2015 Olivier Award winner for Best New Comedy, *The Play That Goes Wrong* (Duchess...still going wrong!). Recent productions include the musical *A Gentleman's Guide to Love & Murder* at Oscarsteatr, Stockholm 2018.

ROBERTO SURACE (*Costume Design*) originates from Melbourne, Australia, where he trained at the Victorian College of the Arts (VCA), now based in London. *The Play That Goes Wrong* marks his Broadway debut. West End: *The Comedy About a Bank Robbery* (Criterion), *Peter Pan Goes Wrong* (Apollo), and *The Play That Goes Wrong* (Duchess). UK national tours: *The Play That Goes Wrong*, Agatha Christie's *And Then There Were None*, and *Peter*

Pan Goes Wrong. Off-West End: *The Trial of Jane Fonda* (Park). International: *The Play That Goes Wrong* (Budapest, Rome, and Australian tour). TV: *Peter Pan Goes Wrong* (BBC One).

RIC MOUNTJOY (*Lighting Design*). Selected designs include *The Play That Goes Wrong* (Broadway, national US tour, West End, also South Korea, Australia, Hong Kong), *Uncle Vanya* (Theatre Clwyd and Sheffield theatres), *Emancipation of Expressionism* (Barbican Theatre and BBC TV), *Mr. Popper's Penguins* (New Victory, NYC, Seattle, Minneapolis, and West End), World premiere of *Karagula* by Philip Ridley (Soho Theatre London), *What the Ladybird Heard* (international touring), *Pandemic* (Singapore International Festival), *The White Whale* (an outdoor Moby Dick, Leeds). Relights include *The Magic Flute* (London Coliseum, English National Opera). ricmountjoy.com

ANDREW JOHNSON (*Sound Design*). *The Bubbly Black Girl Sheds Her Chameleon Skin* (European premiere), *Death Takes a Holiday* (UK premiere), *Ragtime*, *Titanic*, *TPTGW* (West End, Australia, and UK tours), *Dogfight* (European premiere), *Catch Me If You Can* (European premiere), *Girlfriends*, *The Stripper*, *The Toxic Avenger*, UK Off-West End nominations for Best Sound Design for *Mack and Mabel*, *Titanic*, and *Grand Hotel* (Southwark Playhouse). Andrew is currently a regular sound designer for Charing Cross Theatre and Theatre Royal Stratford East, London. 2017 shows: *The Braille Legacy*, *Tommy* UK tour, and *How to Succeed in Business Without Really Trying*.

STEPHEN KOPEL, CSA (*US Casting*). Broadway: *Amélie*, *Sunday in the Park...*, *She Loves Me*, *Noises Off*, *On the Twentieth Century*, *Violet*, *Beautiful: The Carole King Musical*, *The Winslow Boy*, *The Glass Menagerie*, *The Mystery of Edwin Drood*, *Harvey*, *Once*, *Anything Goes*, *Brief Encounter*, *The Scottsboro Boys*, *Sondheim on Sondheim*, *Hedda Gabler*. Off-Broadway: *Kingdom Come*, *The Robber Bridegroom*, *Invisible Thread*, *Indian Ink*, *The Common Pursuit*. Kopel currently serves as Casting Director for Roundabout Theatre Company and Encores! Off-Center.

ALLIED TOURING (*Tour Marketing & Press*) is a full-service engagement management agency representing Broadway tours and other live touring events across North America. Current: *The Book of Mormon*; *Roald Dahl's Charlie and the Chocolate Factory*; *Rodgers & Hammerstein's*

Cinderella; Hello, Dolly!; Kinky Boots; The Lightning Thief; The Play That Goes Wrong; Rent; Rock of Ages; School of Rock; Something Rotten!; Irving Berlin's White Christmas. Upcoming: *Ain't Too Proud, Bandstand, Clue—Live on Stage, Harry Potter and the Cursed Child, Clint Black's Looking for Christmas, Mean Girls, The SpongeBob Musical.*

THE BOOKING GROUP (*Tour Booking*). Since its inception in 1996, The Booking Group has represented 25 Tony Award-winning Best Musicals and Plays. Current touring productions include *Hamilton; Anastasia; Come From Away; Dear Evan Hansen; Hello, Dolly!* starring Betty Buckley; *The Book of Mormon; School of Rock; Waitress; On Your Feet!; Rent 20th anniversary tour; Fiddler on the Roof; The Color Purple*; and *Irving Berlin's White Christmas*. Future productions include *The Cher Show, Mean Girls, My Fair Lady, Pretty Woman*, and *To Kill a Mockingbird*.

JEFF NORMAN (*Production Stage Manager*). Tours: *Something Rotten!, Newsies, Chicago*. Las Vegas: *Mamma Mia!, The Lion King*, Cirque du Soleil's *O*. Toronto: *Beauty and the Beast, Miss Saigon, Les Misérables*. Opening team for Disney Cruise Line. Proud member of Actors' Equity Association.

SHARIKA NILES (*Stage Manager*). Broadway: *The Play That Goes Wrong, The Color Purple* (revival), *Finding Neverland, Motown: The Musical, Pippin, The Gershwins' Porgy and Bess*. Tours: *The Color Purple, Without You* (Korea), *Porgy and Bess*. Off-Broadway: *The Tempest, Richard III, Well, Take Me Out, The Winter's Tale, subUrbia*. Apollo Theater: Production Coordinator/Stage Manager 2012–2017. Film: *Baggage Claim, Our Song*. Other: BET, HBO, Jazz at Lincoln Center. Love to Mom and Daisy.

DAVID BENKEN (*Production Manager*). Celebrating 20 years on Broadway and 50 US, international, and touring productions. Credits include *The Play That Goes Wrong* (N.Y.), *Paramour, Misery, The Lion King, Motown The Musical, El Rey Leon* (Madrid), *Annie, Mary Poppins, Peter and the Starcatcher, Chitty Chitty Bang Bang, The Boy from Oz, The Seafarer, The Phantom...* (Las Vegas).

JOSE SOLIVAN (*Company Manager*). Broadway tours managed: *The Color Purple, Finding Neverland, Cabaret, R&H Cinderella, The Gershwins' Porgy and Bess, Anything Goes, Hairspray, The Drowsy Chaperone, Rent, The Producers, Grease*, and *Spamalot*. Broadway tours performed: *Oklahoma!* "Turn your wounds into wisdom." —Oprah. Insta: @cmjosesolivan

DIGBY ROBINSON (*UK Production Management*) has over 30 years' experience of production management in both the commercial and subsidized sectors. Recent productions in London's West End include *Peter Pan Goes Wrong* (Apollo), *The Play That Goes Wrong* (Duchess), *The Comedy About a Bank Robbery* (Criterion), and *Matilda* for the Royal Shakespeare Company (Cambridge). Current projects include *Death of a Salesman* (UK tour) and *Fat Friends The Musical* (UK tour).

BESPOKE THEATRICALS (*General Management*). Partners Amy Jacobs and Devin Keudell manage Broadway musicals, plays, and tours. Current/recent productions: *Tootsie, Harry Potter and the Cursed Child Parts One and Two, School of Rock, The Play That Goes Wrong, The Boys in the Band*, and *Angels in America*. Upcoming: *Beetlejuice* and *The Ferryman*. General Managers include David Roth, Danielle Saks, and Kate Egan.

KEVIN McCOLLUM (*Producer*) has received the Tony Award for Best Musical for *In the Heights* (2008), *Avenue Q* (2004), and *Rent* (1996), which also won the Pulitzer Prize. He produced Olivier Award-winning *The Play That Goes Wrong; Something Rotten!* (Broadway, national tour); *Hand to God* (Broadway, West End); *Motown: The Musical* (Broadway, West End, and national tour); *The Drowsy Chaperone* in 2006, which won five Tony Awards; Baz Luhrmann's production of Puccini's *La bohème* in 2002; [title of show] in 2008; the touring and Broadway productions of *Irving Berlin's White Christmas*; the Off-Broadway hit *De La Guarda*; the recent hit revival of *West Side Story*; and *Bengal Tiger at the Baghdad Zoo*. In 1995, Mr. McCollum co-founded the Producing Office, and has since created Alchemation, a theatrical and media producing company committed to new work. Mr. McCollum was trained at the University of Cincinnati College-Conservatory of Music, and earned his master's degree in film producing from the Peter Stark Program at the University of Southern California. In 1995, he received the Robert Whitehead Award for Outstanding Commercial Theatre Producing.

J.J. ABRAMS (*Producer*) is the founder of Bad Robot Productions. A writer, director, and/or producer of television series such as *Felicity, Alias, Lost, Castle Rock*, and *Westworld* and films such as *Super 8, Star Wars: The Force Awakens*, and the *Mission: Impossible, Star Trek*, and *Cloverfield* franchises, Abrams is currently directing, producing, and co-writing (with Chris Terrio) *Star Wars: Episode IX*. Abrams and his wife, Katie McGrath, co-CEO of Bad Robot, live in Los Angeles and have three children.

KENNY WAX (*Producer*) is a triple Olivier Award-winning London-based producer, currently serving a three-year term as the President of the Society of London Theatre. His musical *Top Hat* won three Olivier Awards including Best New Musical from its seven nominations. His production of *Once on This Island* won Best New Musical in 1995 from its four nominations, and *The Play That Goes Wrong* won Best New Comedy at the Olivier Awards in 2015 and is still playing in the West End, on a UK tour, and was extended on Broadway, where it won a Tony Award for best set design. *Peter Pan Goes Wrong* was nominated for an Olivier in 2016, and *The Comedy About a Bank Robbery* is now into its third year at the Criterion Theatre in London. Kenny has just opened a new musical, *Six*, about Henry VIII's wives, transferring from the Edinburgh Festival into the West End. Later this year he will present the first staged production of *The Worst Witch*, based on the books by Jill Murphy. In the US in 2018/19 Kenny will present *Peter Pan Goes Wrong*, *Around the World in 80 Days*, and *Mr. Popper's Penguins*.

STAGE PRESENCE LTD. (*Producer*) is delighted to be part of the team presenting Mischief Comedy shows on Broadway and all across the United States.

CATHERINE SCHREIBER (*Producer*) is a two-time Tony-winning and Oliver-winning international producer; Broadway Global Producer of the Year, 2017. Productions: Broadway: *Network*, *Pretty Woman*; Off-Broadway: lead producer *The Play That Goes Wrong*. Recent (UK) lead producer: *Company*; *The Lion, the Witch and the Wardrobe*; *Heisenberg*. Catherine is most proud of bringing *The Scottsboro Boys* to London. Winner: London Critics' Circle Award, Evening Standard Award. Nominated for seven Olivier Awards, including Best Musical. Tony winner: *Clybourne Park*, *Angels in America*. Olivier Award: *Company* (2019). Six Tony nominations include *Fiddler on the Roof*, *The Scottsboro Boys*, *Next Fall*, *Peter and the Starcatcher*. Five Olivier nominations include *Dreamgirls*, *Show Boat*, *The Scottsboro Boys*, *People Places and Things*. Upcoming: *The King's Speech*, *The Scottsboro Boys* (Alabama), executive producer: *Made in Kent*, documentary.

KEN DAVENPORT (*Co-Producer*). *Once on This Island* (Tony Award), *Gettin' the Band Back Together*, *Groundhog Day*, *Spring Awakening* (Tony nomination), *It's Only a Play*, *Macbeth*, *Godspell*, *Altar Boyz*, *The Awesome '80s Prom*, *Daddy Long Legs*, and more. Executive Producer for North

America of Andrew Lloyd Webber's Really Useful Group. Created "Be a Broadway Star" board game (available on Amazon), DidHeLikelt.com, and author of the blog TheProducersPerspective.com.

LUCAS McMAHON (*Producer*) is thrilled to help spread Mischief's brand of mayhem across America! He has worked with Kevin McCollum at Alchemation since 2012. Other credits include *The Play That Goes Wrong* on Broadway, *Something Rotten!* (Broadway and national tour), and *Hand to God* (Broadway and West End). He is a proud alumnus of Northwestern University. He would like to thank his family and friends for letting him believe he is right when he is often so wrong.

MARTIAN ENTERTAINMENT (*Co-Producer*) is Gregory Rae, Carl D. White, and Tyrus Emory. Credits: *The Normal Heart* (Tony Award), *Hedwig and the Angry Inch* (Tony Award), and many others. Upcoming: *The Lightning Thief: The Percy Jackson Musical*, *Loch Ness*, *Home Street Home*. MartianEntertainment.com

JACK LANE (*Co-Producer*). Broadway: *Peter and the Starcatcher* (Tony nomination), *Fun Home* (Tony Award), *The Humans* (Tony Award), *The Play That Goes Wrong*, and *The Prom*. Off-Broadway: *Shear Madness*. Jack is the Executive Producer and co-founder of Stages St. Louis, a 32-year-old regional theatre.

DOUBLE GEMINI PRODUCTIONS (*Co-Producer*). Wendy Federman and Carl Moellenberg have collectively garnered 18 Oscars (that is what they call them, right?). Career highlights: Wendy doing the 100-yard dash in a long red dress at Radio City on national TV, Carl searching in Thailand for the missing star who ate too much sushi.

deROY-BRUNISH (*Co-Producer*). Jamie deRoy: three Tony Awards, three Drama Desk, six Outer Critics, two Drama League awards; 41 Broadway and 33 Off-Broadway shows. TV: 11 Telly Awards. Film: *Broadway: The Golden Age Trilogy*. Corey Brunish has garnered eight Tony nominations, two Tony Awards. Currently: *Come From Away*. *Beautiful* is now in its fourth year. For Jessica.

DAMIAN ARNOLD (*Co-Producer*) trained at LAMDA for three years. Producing credits: *Don't Dress for Dinner* (Chicago and Broadway, two Tony nominations), *Gypsy* with Imelda Staunton (West End, Olivier Award), *Thark* by Ben Travers, *Brief Encounter* (dir. Emma Rice). Investor: *Matilda* (Broadway), *Blithe Spirit* with Angela Lansbury (West

End and US tour), *Labour of Love* (with Martin Freeman), *The Lieutenant of Inishmore* (West End), *The Moderate Soprano* by David Hare, *The Girl from the North Country* (West End).

GREENLEAF PRODUCTIONS (*Producer*) is a Tony, Drama Desk, and Olivier Award-winning company whose recent productions include *Dreamgirls* West End, *Groundhog Day*, *Matilda The Musical*, *Fiddler on the Roof*, and *Menopause The Musical*, both currently on tour throughout the United States. They are very proud to be a part of the *Wrong* family. For more information visit greenleafproductions.com.

BARD-ROTH (*Co-Producer*). Bard Theatricals (Annette Jolles, Jim van Bergen, Laurence Holzman, Lara Holzman, David Stern, Linda Hamil): Broadway: *Jagged Little Pill* (upcoming), *The Play That Goes Wrong*, *Fiddler... 2015* (and tour), *China Doll*, *The Scottsboro Boys* (and London), *The Anarchist*, *Looped*. Dean Roth: *Puffs*, *Be More Chill*, *Jagged Little Pill*, *Macbeth* (Alan Cumming), *Clinton The Musical*, and 27 other productions on and Off-Broadway and in the UK.

JOHN YONOVER (*Co-Producer*) supported and invested in more than 35 productions on Broadway, in Chicago, and London, including *Memphis*, *Dee Snider's Rock and Roll Christmas* (Toronto and Chicago), *First Date*, and the currently running *Dear Evan Hansen* and *Come From Away*.

CENTER THEATRE GROUP



MICHAEL RITCHIE (*Artistic Director*) is in his 14th season as Center Theatre Group's Artistic Director, and has led over 200 productions to the Ahmanson Theatre, Mark Taper Forum, and Kirk Douglas Theatre stages, including the premieres of six musicals that moved to Broadway—*The Drowsy Chaperone*, *Curtains*, *13, 9 to 5: The Musical*, *Bloody Bloody Andrew Jackson*, and *Leap of Faith*—and the Pulitzer Prize in Drama finalist *Bengal Tiger at the Baghdad Zoo*.



MEGHAN PRESSMAN (*Managing Director*) joined Center Theatre Group as Managing Director in 2019. Previously, she served as Managing Director of Woolly Mammoth Theatre Company (D.C.), Director of Development for Signature Theatre (N.Y.), and Associate Managing Director of

Berkeley Rep, in addition to working at numerous other theatre and arts organizations across the country. She is the Vice-Chair of the National Board for the Theatre Communications Group (TCG).



DOUGLAS C. BAKER (*Producing Director*) is now in his 29th season at Center Theatre Group. He is an active member of the Broadway League, the Independent Presenters Network, and is a proud member of the Association of Theatrical Press Agents and Managers. In May 2013, Doug received the Broadway League's prestigious Outstanding Achievement in Presenter Management Award.

JEFFREY UPAH (*General Manager, Ahmanson Theatre*) has worked in management at Center Theatre Group since 2006 on more than 50 musicals, plays, and special events including both pre-Broadway productions and Broadway tours. Some of his favorites include *Follies*, *God of Carnage*, and *The Black Rider* (having previously worked on Robert Wilson productions in Boston, Houston, and Sao Paulo, Brazil). Prior to Center Theatre Group, he worked in various capacities at the Santa Fe Opera, Yale Repertory Theatre, American Repertory Theater, and Jacob's Pillow Dance Festival, among others.

GORDON DAVIDSON (*Founding Artistic Director*) led the Taper throughout its first 38 seasons, guiding over 300 productions to its stage and winning countless awards for himself and the theatre—including the Tony Award for theatrical excellence, Margo Jones Award, The Governor's Award for the Arts, and a Guggenheim fellowship. *The Kentucky Cycle* and *Angels in America (Part One)* won the Pulitzer in consecutive years and, in 1994, three of the four plays nominated for the Tony Award for Best Play were from the Taper (*Angels in America* won). In 1989, Gordon took over the Ahmanson and, in 2004, he produced the inaugural season in the Kirk Douglas Theatre.

ADDITIONAL STAFF FOR *THE PLAY THAT GOES WRONG*

GENERAL MANAGEMENT

BESPOKE THEATRICALS

Amy Jacobs Devin Keudell

David Roth Danielle Saks Kate Egan

COMPANY MANAGER

Jose Solivan

Assistant Company Manager Jessica Troy

PRODUCTION MANAGEMENT

David Benken Rose Palombo

U.K. PRODUCTION MANAGEMENT

Digby Robinson

TOUR MARKETING & PRESS

ALLIED TOURING

Marya K. Peters Andrew Damer

Jennifer Gallagher Anne Waisanen

Anne Dailey Meyer Scott Praefke

Jacqueline Smith Janie Dickerson

Hayden Anderson Jessica Cary

TOUR BOOKING AGENCY

THE BOOKING GROUP

Meredith Blair, Kara Gebhart

thebookinggroup.com

U.S. CASTING

Stephen Kopel, CSA

LEGAL COUNSEL

LEVINE PLOTKIN & MENIN, LLP

Loren Plotkin, Conrad Rippey, Susan Mindell

Daniel Watkins, Emily Erstling

Production Stage Manager Jeff Norman

Stage Manager Sharika Niles

Assistant Stage Manager Blair Baker

Associate Director Greg Tannahill

Fight Captain Michael Thatcher

Associate Costume Designer Lisa Zinni

Assistant Costume Designer Amanda Jenks

Associate Lighting Designer Jeremy Cunningham

Associate Lighting Designer Wilburn Bonnell

Associate Sound Designer Beth Lake

Assistant Sound Designer Stephen Dee

U.K. Technical Design Consultant Alan Bartlett

U.K. Production Consultant Sacha Brooks

Production Carpenter Jeff Zink

Head Carpenter Martin Blacker

Assistant Carpenter Leon Lobsinger

Production Sound Supervisor Dillon Cody

Head Sound Christopher Mark Walters

Production Props Emiliano Pares

Head Props Wendy Joy Beckwith

U.K. Props Buyer Jasper Fox

Production Electrician Brendan Quigley

Head Electrician Dirk Van Pernis

Advance Electrician/Crew Sub Kirt Kaminski

Moving Light Programmer Chelsea Zalikowski

Wardrobe & Hair Supervisor Emily Rose Magnuson

Hair & Wig Stylist Kim Shriver

Vocal Coach Kate Wilson

Assistant to Director Susanna McCollum

Production Management Asst. Ron Gerschel

Production Assistant Whitney Keeter

U.S. Production Photography Jeremy Daniel

U.K. Production Photography Simon Turtle

Bespoke Assistant General Managers Mattea Cogliano-Benedict,

Michael Demniak, Lisa Jaeger

General Management Associates Jim Brady, Claire Trempe

GM Office Manager Claire Manning

GM Interns Rebecca Ferrer, Jenna Rich

U.S. Advertising & Marketing SPOTCO

Marketing Services bdb marketing/Betsy Bernstein

U.K. Marketing JHI Marketing

U.K. Press Jo Allan PR

U.K. Tour Press & Marketing Helen Snell

Ltd Accountant WithumSmith+Brown PC/Robert Fried, CPA,

Karen Kowgios, CPA, Anthony Moore, CPA

U.K. Accountants Michael Collins, Lois Hargreaves

Controller Galbraith & Co./LeeAnn Kelley

Banking Signature Bank/Margaret Monigan

Insurance AON/Albert G. Ruben/Claudia Kaufman

Legal Counsel for Goes Rights Ltd Brooks and Distler/Marsha Brooks

Physical Therapy NEURO TOUR, Physical Therapy Inc.

Payroll Services Checks and Balances/Anthony Walker

Visa Consultants Wiskoff Law, PLLC/David King

Travel Agent Tzell Travel/The "A" Team, Andi Henig

Housing Services ABA IDEAL/Elizabeth Helke

Merchandising Creative Goods/Pete Milano

Creative Services Allied Integrated Marketing/

Debbie Allamong, Eric Stormoen

ALCHEMATION

Kevin McCollum

Lucas McMahon

John Gendron

Jack Eidson Jessica Troy

KENNY WAX LTD.

Kenny Wax

Kezia Lock

Sarah Ryan Oriel Bathurst

Amanda Sutton

BroadwayGoesWrong.com

Facebook, Twitter and Instagram:

@BwayGoesWrong

CREDITS

Scenery & automation built by Bay Scenery Ltd. Chandelier by Gothic Gates Ltd. Trick props by PMB Theatre Services Ltd, Russell Beck Studios Ltd, Breakaway Effect Ltd, Karl Evans & Terry Tiffin. Drapes by Chris Claydon Ltd. Upholstery by Claire Sanderson. Portrait artwork by Jane Gibson. Lighting & sound equipment from PRG. Bra*Tenders for hosiery and undergarments. Makeup provided by M·A·C.

SPECIAL THANKS

Nica Burns, Laurence Miller and all at Nimax Theatres. Rachel Williams and the stage management team at the Duchess Theatre, London. Strike Digital, N9 Design, Dragonfly Design, Cambridge Arts Theatre, The Umbrella Rooms, Jonathan Waller, Judith Phillips, Bryony Myers, Charlie Longstaff, Thomas Platt, Martin Thomas, Adam Meggido, Harriet Parsonage, Jenny Wilson, Carla Batten, Mike Hagan, Niall Ransome, Mike Bodie, Harry Kershaw, Joshua Elliott, Julie Jordan, Dylan Emery, Raz Shaw, Janet & David Burke, Suzie Zamit, Lucy Danser, Caroline Jenkins, Julia Worms, Dawn Farrow, Jonathan Maydew, Rodney Cottier, The Old Red Lion, Questors Theatre & LAMDA, Hailey Ferber, Darren DeVerna, Manny and Lani Azenberg, Anton Media Group, Chubb Group

MUSIC CREDITS

"Girls on Film" Written by Simon Le Bon, Nick Rhodes, Andy Taylor, Roger Taylor and John Taylor and performed by Duran Duran. Published by Gloucester Place Music Ltd and used by permission of Sony/ATV Music Publishing LLC. All Rights Reserved. Appears courtesy of Warner Music Group. "Rio" Written by Simon Le Bon, Nick Rhodes, Andy Taylor, Roger Taylor and John Taylor and performed by Duran Duran. Published by Gloucester Place Music Ltd and used by permission of Sony/ATV Music Publishing LLC. All Rights Reserved. Appears courtesy of Warner Music Group.

Production travel & housing by
ROAD REBEL ENTERTAINMENT TOURING,
San Diego, CA

Technical Rehearsals and Previews held at the LEXINGTON OPERA
HOUSE in Lexington, K.Y.

CenterTheatreGroup.org #BwayGoesWrong
Like us on Facebook **Center Theatre Group**
Follow us on Twitter **@CTGLA**
Subscribe on YouTube **CTGLA**
Follow us on Instagram **@CTGLA**



The Actors and Stage Managers employed in this production are members of Actors' Equity Association, the union of professional actors and stage managers in the United States.



The following employees are represented by the International Alliance of Theatrical Stage Employees, Moving Picture Machine Operators, Artists and Allied Crafts of the United States, its Territories and Canada, AFL-CIO, CLC: Stage Crew Local 33; Local Treasurers and Ticket Sellers Local 857; Wardrobe Crew Local 768; Make-up Artists and Hair Stylists Local 706.



UNITED SCENIC ARTISTS represents the designers and scenic painters for the American Theatre.



The Director is member of the Stage Directors and Choreographers Society, an independent national labor union.

Center Theatre Group is a member of the League of Resident Theatres (LORT), the American Arts Alliance, the Broadway League, Independent Producers' Network (IPN), LA Stage Alliance, National Alliance for Musical Theatre (NAMT), and the Theatre Communications Group (TCG).



MICHAEL RITCHIE Artistic Director | **MEGHAN PRESSMAN** Managing Director | **DOUGLAS C. BAKER** Producing Director
GORDON DAVIDSON Founding Artistic Director

Center Theatre Group would like to thank its exceptional staff for their ongoing commitment, dedication, and extraordinary efforts.

ARTISTIC

NEEL KELLER Associate Artistic Director
 KELLEY KIRKPATRICK Associate Artistic Director
 LINDSAY ALLBAUGH Associate Producer
 PATRICIA GARZA Line Producer, Special Artistic Projects
 SUZANNE HEE MAYBERRY Casting Coordinator
 IAN JULIAN WILLIAMS Program Coordinator, Block Party
 TIFFANY SLAGLE Literary Assistant
 MATTHEW BOURNE, DANAI GURIRA,
 ANNA D. SHAPIRO Associate Artists
 DAVID ADIMI (FADIMAN), LUIS ALFARO, JON ROBIN BAITZ,
 STEVE CUIFFO, LISA D'AMOUR, WILL ENO (FADIMAN),
 JENNIFER HALEY, ALESHEA HARRIS, LISA KRON, KIMBER LEE,
 YOUNG JEAN LEE, MATTHEW LOPEZ, TREY LYFORD,
 RICHARD MONTOYA, JANINE NABERS (FADIMAN), QUI NGUYEN,
 LYNN NOTTAGE, MARCO RAMIREZ, SARAH RUHL,
 ROGER GUENVEUR SMITH, GEOFF SOBELLE, LUIS VALDEZ,
 PAULA VOGEL, TRACEY SCOTT WILSON (FADIMAN),
 KAREN ZACARIAS (FADIMAN) Commissioned Artists

LUIS ALFARO, AZIZA BARNES, DIANA BURBANO,
 NOAH HAIDLE, ADITI BRENNAN KAPIL, BRIAN O'ANO,
 RUBY RAE SPIEGEL L.A. Writers' Workshop Members

KRISTINA WONG Sherwood Award Recipient, 2019

EDUCATION, ENGAGEMENT, AND COMMUNITY PARTNERSHIPS

LESLIE K. JOHNSON Director of Social Strategy, Innovation and Impact
 KATHRYN MACKENZIE Director of Administration
 TYRONE DAVIS Audience Engagement Director
 TRACI KWON Arts Education Initiatives Director
 JESUS REYES Community Partnerships Director
 CAMILLE SCHENKKAN Next Generation Initiatives Director
 JAQUELYN JOHNSON Audience Engagement Manager
 ADAM NICOLAI Arts Education Program Manager
 FELIPE M. SANCHEZ Emerging Artists and
 Arts Professionals Program Manager
 ANNE MARIE ACOSTA Administrative Assistant
 DEBRA PIVER Resident Teaching Artist

MANAGEMENT AND ADMINISTRATION

NAUSICA STERGIU General Manager
 JEFFREY UPAH General Manager
 KATIE SOFF Associate General Manager
 ERIC SIMS Associate General Manager
 CASEY McDERMOTT Associate General Manager
 MEGAN ALVORD Company Manager
 ALANA BEIDELMAN Executive Assistant to the Artistic Director

PRODUCTION

JOE HAMLIN Director of Production
 KRISTIN MATSUMOTO Production Manager
 CHRISTOPHER REARDON Production Manager
 KATIE CHEN Assistant Production Manager
 ERIN TIFFANY Assistant Production Manager
 ERICA LARSON Production Coordinator
 SHAWN ANDERSON Head Carpenter (Ahmanson Theatre)
 SCOTT LUCAS Head Properties (Ahmanson Theatre)
 AARON WRIGHT Head Electrician (Ahmanson Theatre)
 ROBERT SMITH Head Sound (Ahmanson Theatre)
 SHANE ANDERSON Head Flyrail (Ahmanson Theatre)
 GARY MARTHALER Wardrobe Supervisor (Ahmanson Theatre)
 MARY WARDE Hair and Make-up Supervisor
 (Ahmanson Theatre)
 CHRISTINE L. COX House Manager (Ahmanson Theatre)
 EMMET KAISER Head Carpenter (Mark Taper Forum)
 MARY ROMERO Head Properties (Mark Taper Forum)
 AARON STAUBACH Head Electrician (Mark Taper Forum)
 BONES MALONE Head Sound (Mark Taper Forum)
 DENNIS SEETOO Wardrobe Supervisor (Mark Taper Forum)
 RICK GEYER Hair & Make-up Supervisor (Mark Taper Forum)
 LINDA WALKER House Manager (Mark Taper Forum)
 ADAM PHALEN Head Audio (Kirk Douglas Theatre)
 SEAN MEYER Head Electrician (Kirk Douglas Theatre)
 CAMBRIA CHICHI Wardrobe Supervisor (Kirk Douglas Theatre)
 BEN GRAY Stage Supervisor (Kirk Douglas Theatre)

CHAD SMITH Associate Technical Director
 LEE O'REILLY Associate Technical Director
 SEAN KLOC Shop Supervisor
 MERRIANNE NEDREBERG Prop Director
 KATE REINLIB Associate Prop Manager
 ERIC BABB Assistant Prop Shop Manager
 ERIN WALLEY Assistant Prop Lead
 CANDICE CAIN Costume Director
 BRENT M. BRUIN Costume Shop Manager
 MADDIE KELLER Costume Generalist
 WHITNEY OPPENHEIMER Resident Assistant Costume Designer
 KAT PATTERSON Resident Assistant Costume Designer
 SWANTJE TUOHINO Tailor

OPERATIONS

DAWN HOLISKI Director of Operations and Facilities
 PETER WYLIE Office Services Manager
 ELIZABETH LEONARD Senior Facilities Manager
 MAX OKEN Facilities Manager
 SONDRA MAYER Concessions Manager (Kirk Douglas Theatre)
 JULIO A. CUELLAR Driver/Custodian
 JOE HALLAM Driver

FINANCE, INFORMATION TECHNOLOGY, AND HUMAN RESOURCES

CHERYL SHEPHERD Chief Financial Officer
 SARAH STURDIVANT Director of Finance and Technology
 SUZANNE BROWN Controller
 DANNY LAMPSON OPSTAD Accounting Manager
 NAKISA ASCHTIANI Senior Staff Accountant
 ALEGRIA SENA Staff Accountant
 XOCHITL RAMIREZ Accounts Payable Supervisor
 KERRY LARICK Accounting Assistant
 JESSICA HERNANDEZ Payroll Manager
 JUAN MARTINEZ Payroll Specialist

TOM MEGALE Director of Business Applications
 ASH LEWIS Systems Administrator
 JANELLE TORRES Senior Tessitura & Web Administrator
 CHIMA OMEAKU Help Desk Support
 JODY HORWITZ Director of Human Resources
 PJ. PHILLIPS Senior Human Resources Generalist
 MELISSA MCCAFFREY Human Resources Generalist
 MOSS ADAMS Auditor
 MICHAEL C. DONALDSON, LISA A. CALLIF Legal Counsel
 GIBSON, DUNN & CRUTCHER Legal Counsel

INSTITUTIONAL ADVANCEMENT

YVONNE CARLSON BELL Director of Institutional Advancement
 TYLER ENNIS Deputy Director of Institutional Advancement
 JASON CABRAL Director of Advancement Operations & Analytics
 LOUIE ANCHONDO Director of Events & Corporate Relations
 ASHLEY TIERNEY Director of the Annual Fund
 TERRA GOULDEN Senior Major Gifts Officer
 LAURA HITE Associate Director of Gift Operations & Reporting
 MANDI OR Associate Director of Special Events
 TRACY REICH Interim Associate Director of Gift Operations & Reporting
 RYAN WAGNER Associate Director of Donor Data &
 Communication Strategy
 VANESSA WHEELER Associate Director of Prospect Research
 MOLLY COTTEN Major Gifts Officer
 CHRISTY LAMB Corporate Relations Officer
 SARAH RIDDLE Annual Fund Manager
 ERIN SCHLABACH Donor Stewardship & Recognition Strategist
 ELIZABETH DELLORUSSO Annual Fund Officer
 DONALD JOLLY Advancement Communications Specialist
 EDUARDO MOLLINEDO-PINÓN Advancement Database Analyst
 MIKE RATTERMAN Donor Advisor Supervisor
 ERIC SEPPALA Executive Assistant to the Director
 of Institutional Advancement
 MATTHEW SUTPHIN Special Events Coordinator
 OLIVIA BERUMEN Advancement Operations Associate
 SOHNI RISAM Institutional Advancement Assistant

AL BERMAN, VARTAN MERJANIAN, BENJAMIN SCHWARTZ,
 NICOLE SCIPIONE, PAUL VITAGLIANO Donor Advisors
 KARLA GALVEZ, JUSTINE PEREZ Donor Services Associates
 MURRAY E. HELTZER, EARL KLASKY Development Volunteers

MARKETING

DEBORAH WARREN Director of Marketing
 GARRETT COLLINS Marketing Strategy Director
 KYLE HALL Creative Director
 ARIE LEVINE Senior Marketing Manager, Ahmanson &
 Mark Taper Forum
 KIYOMI EMI Marketing Manager, Promotions & Events
 EMYLI GUDMUNDSON Marketing Manager, Kirk Douglas Theatre
 CAROLINE THOMPSON/IMPACT 123 Media Planning

DEANNA McCLURE Art and Design Director
 IRENE T. KANESHIRO Senior Design Manager
 SANDI SILBERT Senior Designer
 TARA NITZ Senior Designer
 JAVIER VASQUEZ Senior Designer-Digital Specialist

COMMUNICATIONS

JAMES SIMS Director of Communications
 JASON MARTIN Head of Publicity
 KRISTI AVILA Publicist
 KAREN BACELLAR Junior Publicist
 SARAH ROTHBARD Associate Editorial Director
 TYLER EMERSON Digital Product Manager
 MICAELA CUMMINGS Social Media Specialist
 REZA VOJDANI Communications Coordinator
 HAL BANFIELD Multimedia Producer

TICKET SALES AND SERVICES

SHAWN ROBERTSON Ticket Sales Director
 SKYPP CABANAS Senior Manager, Ticket Operations
 NICOLE MEDINA Ticket Operations Coordinator
 MICHAEL ZOLDESSY Senior Manager, Account Sales
 SANDY CZUBIAK Audience and Subscriber
 Services Director
 JENNIFER BAKER, CHERYL HAWKER,
 RICHARD RAGSDALE Audience Services Supervisors
 ALICE CHEN Audience Services Asst. Supervisor
 MICHAEL ESPINOZA, GARY HOLLAND Audience Services Sales Associates
 SAM AARON, JESSICA ABROMAVICH, JEREMIE ARENCIBIA,
 KIMBERLY ARENCIBIA, WICKI BERNOT,
 DAVID BETANCOURT, ALEJANDRA DE PAZ,
 KAITLYN GALVEZ, ANASTASHIA GARCIA,
 ELIANA HERNANDEZ-FAUSTO, CHRISTINE PEDROZA,
 EILEEN PEREZ, CHRISTIAN UNGER Audience Services Representatives
 DANUTA SIEMAK Subscriber Services Supervisor
 CHRISTINA GUTIERREZ Subscriber Services Asst. Supervisor
 IRENE CHUANG, LIGIA PISTE, PETER STALOCH Subscriber Services
 Senior Representatives
 SARAH K. GONTA Box Office Treasurer
 ANGELICA CARBAJAL, MICHAEL VALLE Assistant Treasurers
 KEANA JACKSON, MICHAEL KEMPISTY,
 KEVIN LAUVER, CRIS SPACCA Box Office Staff
 KERRY KORF Priority Services Director
 CANDICE WALTERS Priority Services Sales Manager
 PAUL CUEN, KRISTEN SCHRASS Priority Services Managers
 SOFUA DUTCHER Priority Services Assistant Supervisor

BEAELNE AHERN, CLAY BUNKER, MAGGIE DODD, NATALIE DRESSSEL,
 MARC "BYRON" DROTMAN, FRANK ENSENBERGER, LOU GEORGE,
 BRAD GRIFFITH, CONSTANCE HARCAR, SHEP KOSTER, JULIANNA OJEDA,
 IAN PRICE, DIANE WARD Priority Services Representatives

KEVIN CHRISNEY, JESSICA DOHERTY, DAENA HARDASH,
 TATSUYA ITO, KEVIN JOHNSON, BAILEY KOCH,
 LUCY KRUBINER, MIRANDA PLA, AYU TANAKA Interns