

# KIRK DOUGLAS THEATRE

## 2019/20 SEASON

FIRST SEASON PRODUCTION

### **ON BECKETT**

Conceived & Performed by Bill Irwin

Sep 13 – Oct 27, 2019

SECOND SEASON PRODUCTION

### **UNTIL THE FLOOD**

Written & Performed by Dael Orlandersmith

Directed by Neel Keller

Jan 24 – Feb 23, 2020

THIRD SEASON PRODUCTION

### **BLOCK PARTY 2020**

Celebrating Los Angeles Theatre

SACRED FOOLS THEATER

### **THE ART COUPLE**

By Brendan Hunt

Directed by Lauren Van Kurin

Mar 18–29, 2020

IAMA THEATRE COMPANY

### **CANYON**

By Jonathan Caren

Original Direction by Whitney White

Staged for the Kirk Douglas Theatre  
by Colleen Labella

Apr 8–19, 2020

FOURTH SEASON PRODUCTION

### **SAKINA'S RESTAURANT**

Written & Performed by Aasif Mandvi

Originally Directed &  
Developed by Kimberley Hughes

Directed by Kimberly Senior

May 29 – Jun 28, 2020

Official Card of  
Center Theatre Group



Sacred Fools  
Theater Company

# THE ART COUPLE

MAR 18-29

# BLOCK PARTY 2020

CELEBRATING L.A. THEATRE

IAMA Theatre Company

# CANYON

APR 8-19

CENTER  
THEATRE  
GROUP



friend.  
insider.  
visionary.

you!

## INTRODUCING A NEW MEMBERSHIP EXPERIENCE AT CENTER THEATRE GROUP

As a nonprofit organization, Center Theatre Group relies on the philanthropy of people just like YOU.

Your tax-deductible contribution of \$100 or more helps ensure that Center Theatre Group continues to bring the highest quality theatre to our community. And, as a member, you will unlock benefits that enhance your theatregoing experience, from behind-the-scenes members-only events to the best seats in the house—and more!

Learn more at [CTGLA.org/membership](http://CTGLA.org/membership)

### QUESTIONS?

Call our Membership Concierge  
at 213.972.7564 or email [membership@CTGLA.org](mailto:membership@CTGLA.org)

### friends

Friends get first access to tickets before the general public plus invitations to members-only events, including backstage tours and rehearsals. *Join today with a gift of \$100 or more.*

### insiders

Insiders enjoy a year-round VIP experience with access to the best seats for our shows, concierge service for house seats at New York and London productions, and special behind-the-scenes events. *Join today with a gift of \$2,500 or more.*

### visionaries

Visionaries have the ultimate access to our artists, shows, programs, and staff, with premium seating for our productions, including use of The Founders' Room at the Ahmanson, and invitations to private salon-style artist events. *Join today with a gift of \$15,000 or more.*

**CENTER  
THEATRE  
GROUP**



Companies  
This Season!

BLOCK  
PARTY

3 L.A. Theatre Companies  
Join the Douglas Season!

APR 14-23  
**FAILURE**  
A LOVE STORY  
by Philip Dawkins  
DIRECTED BY  
Michael Matthews

APR 28-MAY 7  
**CITIZEN**  
AN AMERICAN LYRIC  
by Charles Blanker  
DIRECTED BY  
Shirley Jo Finney

MAY 12-21  
**DRY LAND**  
by Philip Dawkins  
DIRECTED BY  
Austin Dorian

KIRK DOUGLAS THEATRE.

The Companies and Voices of

# BLOCK PARTY

2020 marks Center Theatre Group's fourth annual Block Party at the Douglas. Each year, we invite theatre companies from across the Los Angeles intimate theatre scene to apply to participate with a recent production they're interested in remounting with us at the Douglas.

In addition to producing their works onstage at the Douglas, the selected companies meet with one another and with different Center Theatre Group departments to collaborate, exchange ideas, and learn from one another.

"We designed Block Party to create a bridge between our company and other Los Angeles theatres—for the organizations, artists, staff, and audiences," said Associate Artistic Director Lindsay Allbaugh. "The visiting companies bring their unique voices and artistry to our season, which we hope encourages our audiences to visit more intimate theatres spaces and experience the vibrant and daring offerings of the Los Angeles theatre landscape."

We checked back in with the visiting companies from the past three seasons of Block Party to find out what they took away from their experiences with us—and what they're up to right now and next.

**KIRK DOUGLAS THEATRE**

**BLOCK PARTY 2020**  
CELEBRATING LOS ANGELES THEATRE

**BLOODLETTING**  
MAR 29 - APR 8  
PLAYWRIGHTS' JESTRE  
BY BONI B. ALVAREZ  
DIRECTED BY JOHN LAWRENCE RIVERA

**DIE, MOMMIE, DIE!**  
MAY 10 - MAY 20  
CELEBRATION THEATRE  
BY CHARLES BUSCH  
DIRECTED BY RYAN BERGMANN

**FOR THE LOVE OF**  
THEATRE OF NOTE  
BY GINA FEMIA  
DIRECTED BY RHONDA KOHL  
MAR 7-17

**ROTTERDAM**  
SKYLIGHT THEATRE COMPANY  
BY JON BRITTAIN  
DIRECTED BY MICHAEL A. SHEPPERD  
MAR 28 - APR 7

**NATIVE SON**  
ANTAEUS THEATRE COMPANY  
BY NAMBI E. KELLEY  
DIRECTED BY RICHARD WRIGHT  
DIRECTED BY ANDI CHAPMAN  
APR 18-28

**BLOCK PARTY 2020**  
MAR 07 - MAY 28  
213.628.2772  
KIRKDOUGLASTHEATRE.ORG

# 2017

## Coeurage Theatre Company

### *Failure: A Love Story*

"Everyone at Center Theatre Group was and continues to be open and welcoming. They were just as excited as we were to put on our show. If I needed guidance on building our board or donor base, they really encouraged us to reach out and get the support we needed. That continues to be true. They took the time to have meetings with us about things we were interested in learning more about like marketing and corporate sponsorship.

We just announced our two new Co-Artistic Directors, Amanda McRaven and Joe Calarco, and I'm really excited for their fresh take on the company and seeing where this new leadership will take us!"

—**Nicole Monet, Executive Director**

## Fountain Theatre

### *Citizen: An American Lyric*

"Artistically, Block Party enabled us to realize our larger vision for the play and reach new audiences. It deepened our relationship with Center Theatre Group staff. It increased our fundraising capability. And we acquired two new Board members as a direct result of Block Party. The highlight for me, personally, was sitting in the audience on Opening Night and seeing our play performed on a larger stage with higher-end production values. I saw not only what the play could be, but what the Fountain Theatre could be and where it needed to go.

Our latest World premiere is the new play *Human Interest Story*, which dramatizes the urgent issues of our time: homelessness, racism, politics, corruption, and truth in journalism."

—**Stephen Sachs, Artistic Director**

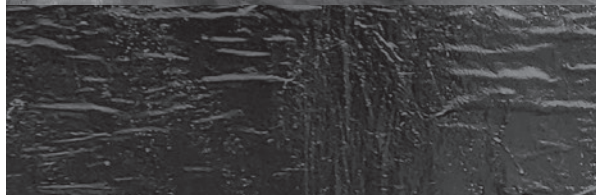
## Echo Theater Company

### *Dry Land*

"Block Party helped enormously to raise our profile and expand our audience. Ultimately, it was so wildly fulfilling to see the work transposed to that venue; such a confirmation of [Echo Associate Artistic Director/Literary Manager and director] Alana Dietze's work and the play and that of the team and cast. Truly a once-in-a-lifetime.

We've just opened a World premiere—*Poor Clare* by Chiara Atik! A gorgeous wonderful play about St. Clare—she of the "Poor Clares"—that will make you, seriously, laugh and cry. About homelessness and the wealth gap and it, if I do say so, is exquisite in so many ways."

—**Chris Fields, Artistic Director**



(Top–Bottom) Kurt Quinn (center) and the cast of *Failure: A Love Story*. (L–R) Bernard K. Addison, Monnae Michael, and Tony Maggio in *Citizen: An American Lyric*. (L–R) Teagan Rose and Connor Kelly-Eiding in *Dry Land*. Photos by Craig Schwartz.





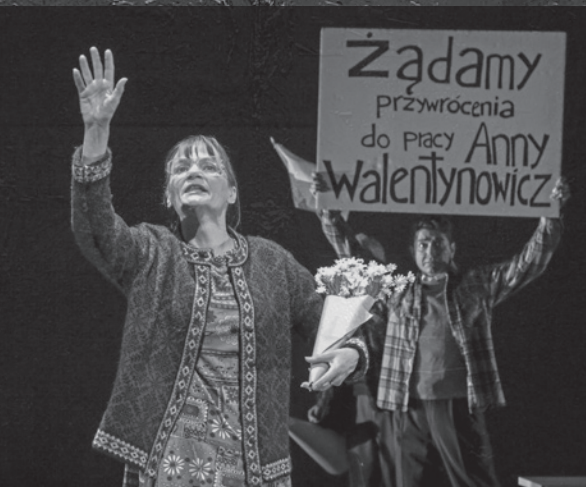
## Playwrights' Arena

### *Bloodletting*

"I believe Block Party gave Playwrights' Arena a greater presence in the community—in particular, with audiences who were not familiar with our work. I observed several of the post-play discussions and heard so many Filipino American audience members talking about how much they loved seeing their stories represented on that stage.

We just closed our sold-out run of *Red Ink* by Steven Leigh Morris and are hosting our annual fundraiser gala Hot Night in the City at Barnsdall Gallery Theatre. Then, we start rehearsals for Inda Craig-Galván's play *A Hit Dog Will Holler* at Atwater Village Theatre."

—**Jon Lawrence Rivera, Artistic Director**



## Critical Mass Performance Group

### *Ameryka*

"It was an incredible opportunity to fulfill a more complete vision of *Ameryka*, and to grow as an ensemble. We also learned a lot through the mentorship of the Center Theatre Group staff, and interactions with the other Block Party companies throughout the year. It was an exemplary experience on every level. One particular highlight was our fantastic stage manager, Susie Walsh. Susie embraced our crazy group and process, and supported us with a firm, yet nurturing hand, and enthusiastic devotion. We are so grateful to have been able to work with her.

We're currently in the midst of developing a new piece called *Mariology*. We're especially grateful to Center Theatre Group for supporting this project with a completion commission. Looking forward to a premiere in 2022!"

—**Nancy Keystone, Artistic Director**



## Celebration Theatre

### *Die, Mommie, Die!*

"To work in both association with and in collaboration with Block Party was huge. Our patron base was very impressed by this and showed their support by not only showing up at the Kirk Douglas Theatre but also by showing financial support for being part of such a prestigious honor. A highlight of my Block Party experiences as both a producer and a director has been the photo shoot with the participating companies. Spending time with some of L.A.'s top artists is always going to be one of my favorite experiences.

This is our year of collaborations. We will be doing projects with EST/LA, Loft Ensemble, and the Los Angeles LGBT Center."

—**Michael A. Shepperd, Artistic Director**

(Top–Bottom) (L–R) Myra Cris Ocenar, Boni B. Alvarez, and Anne Yatco in *Bloodletting*. Photo by Lawrence K. Ho. Valerie Spencer and Richard Gallegos in *Ameryka*. Photo by Lawrence K. Ho. Drew Droege in *Die, Mommie, Die!* Photo by Craig Schwartz.

# 2019

## Theatre of NOTE

*For The Love Of (or, the roller derby play)*

“The impact of Block Party on NOTE was immeasurable. It added a little cache to NOTE’s reputation, and it was nice to get our work seen by more theatregoers who had no idea that NOTE even existed. NOTE is a 42-seat theatre, so seeing a house the size of the Douglas responding to the work was memorable. In our [knowledge sharing] workshop with Center Theatre Group Institutional Advancement, NOTE’s hurdles seemed the same as those of Center Theatre Group and the other theatres involved in Block Party—admittedly on much different scales, but the issues are the same. Not sure why, but it helps when you can confirm that the day-to-day struggles are universal.

Our first show of the 2020 Season is *Little Reds* by Kerry Kazmierowicztrimm, directed by McKerrin Kelly.”

—John Money, Board of Directors

## Skylight Theatre Company

*Rotterdam*

“The spotlight was on us while we were performing at the Douglas. We had exposure to the Westside audience. And we had a chance to work on a larger stage and to realize the play in a larger house. A year later people are still talking to us about it, and it’s great to tout it in our resume. In all it was a great celebration of our growth. And not only was it viewed by the intimate theatre community, we were fortunate to have Michael Ritchie and Artistic Directors from most of the major theatres around Los Angeles see our work.

Opening next is *Lavender Men, An Emancipation Play* by Roger Q. Mason. Enter the historical fantasia of Taffeta, a self-proclaimed “fabulous queer creation of color,” as she invades the private world of Abraham Lincoln to confront issues of LGBTQ+ inclusion and visibility that still challenge us today.”

—Gary Grossman, Artistic Director

## Antaeus Theatre Company

*Native Son*

“Antaeus began in 1991 when [Center Theatre Group Founding Artistic Director] Gordon Davidson allowed a group of classically trained actors to use the rehearsal room on Monday nights. So being back in that very same room all these years later, collaborating with Center Theatre Group, was like coming home. We felt very proud and grateful, and the opportunity to get to know the other theatre companies in Block Party better was an added bonus. Too often we feel like we’re working in siloes. Block Party brings the whole city together.

Center Theatre Group gave us the opportunity to have Audience Talks after each performance of *Native Son*. The play asks very tough questions about race and violence in America, and we found that audiences needed the chance to express their feelings about the impact the piece had on them. The actors, moderators, and audience members who took part enjoyed the best that theatre has to offer: a real conversation.

Our 30th anniversary is coming up in 2020/21, and we’re looking forward to a season that demonstrates who we are and where we’re going next.”

—Bill Brochtrup, Artistic Director



(Top–Bottom) Tania Verafield (front) and (L–R) Lynn Odell, Liesel Hanson, and Alina Phelan in *For The Love Of (or, the roller derby play)*. (L–R) Miranda Wynne and Ashley Romans in *Rotterdam*. Jon Chaffin in *Native Son*. Photos by Craig Schwartz.



Presents the SACRED  FOOLS production of

# THE ART COUPLE

Written by

**Brendan Hunt**

With (in alphabetical order)

**Paulie Gauguin** ..... **BRYAN BELLOMO**  
**Angelique Alouette/August** ..... **KRISTYN EVELYN**  
**Neil Simon** ..... **CLAYTON FARRIS**  
**Rachel/Madame Ginoux** ..... **MARIE-FRANÇOISE THEODORE**  
**Hank Toulouse-Lautrec/Toinette Alouette** ..... **MADELEINE HEIL**  
**Vinnie van Gogh** ..... **BRENDAN HUNT**  
**George/Roulin/Inspector/Theo** ..... **JOEL SCHER**  
**Steve the Busboy** ..... **RYAN PATRICK WELSH**

Scenic Design

**DeAnne Millais**

Costume Design

**Linda Muggeridge**

Lighting Design

**Andrew Schmedake**

Sound Design

**Ben Rock**

Projection Design

**Corwin Evans**

Wigs, Hair & Make-up  
Design

**Angela Santori**

Prop Consultant

**Ashley Crow**

Fight Director

**Trampas Thompson**

Center Theatre Group  
Associate Artistic Director

**Lindsay Allbaugh**

Production Stage Manager

**Rachel Manheimer**

Stage Manager

**Taylor Anne Cullen**

Associate Director

**Bruno Oliver**

Directed by

**Lauren Van Kurin**

*The Art Couple* will be performed with an intermission.

**MARCH 18–29, 2020 KIRK DOUGLAS THEATRE**

Block Party receives major support from Aliza Karney Guren and Marc Guren with generous funding also provided by Joni and Miles Benickes, and additional support provided by Kiki and David Gindler.

# WHO'S WHO



**BRYAN BELLOMO** (*Paulie Gauguin*) is honored to make his Center Theatre Group debut on behalf of Sacred Fools, where he was Co-Artistic Director from 2014–2018 and performed in *The Art Couple*, *There Is a Happiness That Morning Is*, *Neverwhere*, *View of the Dome* (Garland Award), and *Want's Unwished Work* (*LA Weekly* nomination), among others. Directing credits include *Autobahn*, *Touch*, *Parallel Lives*, *As You Like It*, and the film shorts *The Deed*, *Shelter*, *All or Nothing*, and *Dirty Money*. Thanks to all Fools for their support! To Lauren, Brendan, Padraic, and Bruno for their tireless devotion, and all love to Monica and the B. [bryanbellomo.com](http://bryanbellomo.com)



**KRISTYN EVELYN** (*Angelique Alouette/August*) has been sitting in L.A. traffic for about 8.5 years, and is thrilled to be making her Center Theatre Group debut while bringing one of her favorite theatrical experiences back to the stage. Select theatre credits include *Deadly* (Sacred Fools), *Dr. Nympho vs. The Sex Zombies* (Celebration Theatre and Cherry Poppins Productions), *Much Ado About Nothing* (unMasqued Theatre Company), *The Cherry Orchard* (Off Square Theatre Company), and *A Walk To Remember: The Unauthorized Musical* (Player Hater Productions). She's also worked with Coeurage Theatre Company, The Sierra Madre Playhouse, and at Rockwell: Table & Stage. Thank you Mom for everything, Andrew for the love, and the entire production team for the laughs. @iamkristynevelyn



**CLAYTON FARRIS** (*Neil Simon*) is honored to be stepping back into Neil Simon's loafers and grateful for the opportunity to work with Center Theatre Group. He was most recently seen as Michael Hills in the World premiere of *West Adams* at the Skylight Theatre. When not acting, he spends his time writing and making short films. Film: *Road Head* (dropping this summer!). TV: *Seal Team*, *This Is Us*, *All Rise*, *Ratched*, *Days of Our Lives*. Thank you for supporting live theatre! Find me: @claytonfarris



**MARIE-FRANÇOISE THEODORE** (*Rachel/Madame Ginoux*) is happy to be making her Center Theatre Group debut! She is currently starring in the Meek Mill/Justin Timberlake music video "Believe." She was last seen in the theatrical World premiere of *Never Ever Land* written by

Rider Strong (*Boy Meets World*) at Theatre Unleashed. She has held leading roles at Secret Rose Theatre (*It's Just Sex*), Theatricum Botanicum (*Titus Andronicus*), City Garage (*Agamemnon*), The New American Theatre Company (*Bedfellows*), and Boston Court (*Colony Collapse u/s*). Lead roles regional theatre: The Guthrie, Penumbra Theatre (St. Paul/Mpls), Steppenwolf Theatre, Court Theatre (Chicago). TV/film: *Station 19*, *How to Get Away with Murder*, *Casual*, *Workaholics*, and feature *A.X.L.* (Netflix). Marie-Françoise would like to thank her family and the universe for this amazing opportunity.



**MADELEINE HEIL** (*Hank Toulouse-Lautrec/Toinette Alouette*) is thrilled to be remounting this incredible show with Center Theatre Group. She received her BA in theatre arts at Brown University. After relocating to L.A., she joined the Cherry Poppins, Toil & Trouble, and Babylon Cabaret burlesque troupes.

You may have recently seen her onstage in *The Value of Moscow* or *Gifted* at Sacred Fools, or *Dr. Nympho vs. the Sex Zombies* at Celebration Theatre. She directed/choreographed *Spring Awakening* at Cupcake Theater and costume designs for Cherry Poppins. Stop by The Rockwell to see her as Charlie in their upcoming *Willy Wonka* burlesque parody. Endless thanks to Sean, and her menagerie of pets at home.



**BRENDAN HUNT** (*Vinnie van Gogh & Playwright*). Originally from Chicago, Brendan is an actor-writer who has come to call Los Angeles home. He studied theatre at Illinois State before decamping for Amsterdam to join the notorious sketch/improv theatre Boom Chicago; he would stay in Amsterdam for five

years, as depicted in his imaginatively titled solo show *Five Years In Amsterdam*. He wrote and starred in the play *Absolutely Filthy*, which won both the L.A. and N.Y. Fringe Festivals before enjoying a run at South Coast Repertory's Studio Series. That play debuted at Sacred Fools, where he had previously won an Ovation Award for Lead Actor in a Musical for the role of Eldridge in *Savin' Up For Saturday Night*. Onscreen appearances include *Key & Peele*, *Community*, and *Bless This Mess*. He is a co-creator and co-star of Jason Sudeikis' sitcom *Ted Lasso*, coming soon to Apple TV+. He thanks you for coming.

**JOEL SCHER** (*George/Roulin/Inspector/Theo*) is delighted to be making his stage debut with Center Theatre Group at the Kirk Douglas Theatre. He is a long-time member of Theatre of NOTE and an associate member of Sacred Fools Theater in L.A. Some favorite shows at NOTE include *He Asked*





for *It*, *The Invisible Play*, *Supper* (Best Actor nomination), *Marian* (Best Featured Actor win), and *Cleo, Theo and Wu*. Joel was just in the Edinburgh Fringe Festival (summer 2019) with the critically acclaimed *Cleo, Theo and Wu*. He was last seen on television in *Blunt Talk* (Starz) as Sir Patrick Stewart's recurring ineffectual lawyer. Many thanks to Lauren, Brendan, Sacred Fools, and Center Theatre Group.



**RYAN PATRICK WELSH** (*Steve the Busboy*) earned his MFA from the University of California, Irvine before moving to L.A. As an actor, he has worked with Boston Court, Coeurage Theatre Company, and Sacred Fools Theater Company. He was a series regular for two seasons on the Lionsgate comedy *Bite Me*. As a playwright, his work has been featured with The Road Theatre Company, and most recently in the Activate: Midwest New Play Festival. One of Ryan's most recent film directorial endeavors, *Oh Sorry*, will be premiering at the Manchester Film Festival. Ryan also serves as Assistant Professor of Media Acting at Michigan State University.

**LAUREN VAN KURIN** (*Director*) is honored to be directing at Center Theatre Group whilst growing a human! She's an actor, director, writer, and company member at Sacred Fools Theater. Favorite acting credits: *King of Kong: A Musical Parody* (Best Musical Hollywood & NYC Fringe), *RIO HONDO* (Theatre of NOTE), *League of Fools* (Sacred Fools), *Earth to Karen* (Hollywood Fringe), and performing all over the world with The Second City cruising the high seas. Directing credits: *Still Got It* (Best Solo Show Hollywood Fringe) and *POCKETS* (SoHo Playhouse Fringe Encore). Thank you Center Theatre Group for this incredible opportunity, Brendan for your genius and trusting me, and Darrett for being my home.

**BRUNO OLIVER** (*Associate Director/Producer*) is a professional actor and passionate believer in L.A.'s intimate theatre. He has called Sacred Fools home since 1998 and is the current Board President. Produced for Fools: *The Art Couple*, *Gifted*, *Rose and the Rime*, *A Gulag Mouse*, *Dubya 2000*, *Crazyface*. He has performed in many of Fools' productions, late-night shows, and other programming, most recently starring in *Waiting for Waiting for Godot*. Around L.A.: LOFT Ensemble, New American Theatre, Rogue Machine, 2Cents, Whitefire, International City Theatre, Zoo District, Sci-Fest, Hollywood Fringe Festival. More at [brunooliver.com](http://brunooliver.com).

**DEANNE MILLAIS** (*Scenic Designer*). Sacred Fools: *Taste* (Stage Raw Award winner; Ovation Award nominated), *Do Androids Dream of Electric Sheep?* (LA Weekly Theater Award nominated), *Astro Boy* and *The God of Comics*, *Skullduggery*, *The Art Couple*, etc. Recently designed Ovation and Stage Raw Award nominated set for *Daniel's Husband* at the Fountain Theatre. Prop designer: *Coco: A Live-to-Film Concert*, *La La Land in Concert*, and *Beauty and the Beast in Concert*, all at the Hollywood Bowl. Immersive: SoCal pop-up *That's From Disneyland!*, Escape Room LA's *The Theatre*, FX's environments at Comic-Con. She's honored to be working with the wonderful artists at Center Theatre Group.

**LINDA MUGGERIDGE** (*Costume Designer*) has costumed over 300 shows around the world, but her favorites have been with her fellow company members of Sacred Fools! Other recent productions include *Deadly* and *Waiting For Waiting For Godot* at Sacred Fools, *Coco* and *The Little Mermaid* live-to-film productions at the Hollywood Bowl, *Proving Up* at Pasadena Opera, and 10 million spring musicals at every high school ever. Check out her website at [manyhatzcostumes.com](http://manyhatzcostumes.com).

**ANDREW SCHMEDAKE** (*Lighting Designer*). Previous credits at Center Theatre Group: *Native Son*. Other recent credits include *A Body of Water* and *33 Variations* (Actors Co-op); *Proving Up* (Pasadena Opera); *Rigoletto* and *Carmen* (Opera Modesto); *Alexander and the...Bad Day* (South Coast Repertory); *The Abuelas* and *Native Son* (Antaeus Theatre Company); *The Last Five Years* and *One Flew Over the Cuckoo's Nest* (After Hours Theatre Company); *Deadly* (Sacred Fools); *Andy Warhol's Tomato* (Pacific Resident Theater). Awards: three-time LA Stage Alliance Ovation Award recipient; L.A. Drama Critics Circle Award; NAACP Theatre Award. Education: Carnegie Mellon University. [schmedakelightingdesign.com](http://schmedakelightingdesign.com)

**BEN ROCK** (*Sound Designer*) is an award-winning director, producer, and projection and sound designer. At Sacred Fools Theater, he directed *The Sirens of Titan*, *Baal*, *Richard III*, and *Occupation*. Previously, he designed video projection for *Stoneface* and *Do Androids Dream of Electric Sheep?* (with Anthony Backman), as well as *Sci-Fest* (seasons one and two), *Rio Hondo*, *Empire Burlesque*, and *Skullduggery*. His film work ranges from production designing *The Blair Witch Project* to directing *Future Boyfriend*, a sci-fi romantic comedy which premiered at the Tribeca Film Festival. Please check out *20 Seconds to Live*, the web series he created with Bob DeRosa, and his horror fiction podcast *Video Palace*. His work can be found at [benrockonline.com](http://benrockonline.com) or follow him on Twitter @Neptunesalad.

**CORWIN EVANS** (*Projection Designer*) is a theatre artist specializing in video and sound design. He has been a teaching artist with various companies, including Greenway Court Theatre, Watts Village Theater Company, and Center Theatre Group. He is also a co-founder and moderator of Technical Theatre Artists of Los Angeles. Selected credits: *4.48 Psychosis* (video, Son of Semele Ensemble), *Plasticity* (video design/associate producer, Ovation Award for Best Video Design), *The Rose and the Rime* (video/sound design, Ovation nomination for Best Video Design, Sacred Fools), *The Word Begins* (video, Hip-Hop Theater Festival/Rogue Machine), and Ojai Playwrights Conference (sound/video, 2015–2019).

**ANGELA SANTORI** (*Wigs, Hair & Make-Up Designer*) currently works for multiple theatres here in L.A., including A Noise Within, Loft Ensemble, Whitefire Theatre, The Blank, and The Broadwater, with over 35 shows under her belt. She has worked with multiple production companies including RCA Records, 13th Floor Productions, and Apple Inc., and was recently Department Head of Makeup for Los Angeles Haunted Hayride. She's very excited to join the Center Theatre Group family.

**ASHLEY CROW** (*Prop Consultant*) is an assistant editor for film and television. Ashley was the props designer for the previous run of *The Art Couple*. In the past, she was the props designer for *Mom's Dead* at Sacred Fools and was the onstage Foley artist in *Long Joan Silver* at the LOFT Ensemble. She has also worked as props designer for *The Nerd* and *The Children's Hour* as well as wardrobe designer for *Fiddler on the Roof*. Ashley is thrilled to be working with the *Art Couple* team again and thanks her partner, Robert, for his support.

**RACHEL MANHEIMER** (*Production Stage Manager*). Having managed everything from original musicals to avant-garde happenings, some of Rachel's favorite credits include Tim Crouch's *An Oak Tree*, American Opera Project's *Hagoromo*, and *A Midsummer Night's Dream* with the talented seniors at The Professional Performing Arts High School. Rachel is a Resident Manager at The Broadwater, where they also ran the original production of *The Art Couple*. They most recently managed the opening of *FOUND: A New Musical*, now playing at LATC, and look forward to returning to the Ojai Playwrights Conference for the third year. Ask them about the ephemeral power of theatre!

**TAYLOR ANNE CULLEN** (*Stage Manager*). At the Kirk Douglas Theatre: *Native Son*. Other theatres: *Measure for Measure*, *The Caucasian Chalk Circle*, *The Little Foxes*, *Native Son* (Antaeus Theatre Company), *Seven*, *How We're Different from Animals* (Élan Ensemble)

*Alcina* (USC Thornton School of Music), *A Weekend with Pablo Picasso* (Casa 0101 Theatre), *The Kentucky Cycle*, *Mockingbird*, *Love and Information*, *That Long Damn Dark* (USC School of Dramatic Arts). Stage management internship credits include *Tosca* (LA Opera), *Bull*, *Dutch Masters* (Rogue Machine Theatre), and *Annapurna* (The New Group). Taylor is a graduate of the University of Southern California's School of Dramatic Arts BFA in stage management.

**SACRED FOOLS THEATRE COMPANY** is one of the only 100-percent democratically led, non-dues-paying theatre companies in Los Angeles. We believe theatre is a collective art between the artists and the audience, and seek ways to bring theatre to underserved populations, including never charging more than \$15 for a ticket. In 1997, actor John Sylvain and a handful of fellow artists created Sacred Fools Theater Company; since then, over 100 mainstage productions (earning over 160 nominations and 100 awards), plus an endless variety of alternate programming engaging thousands of theatre artists, have transpired. In 2016, we moved to a space on Hollywood's Theatre Row, The Broadwater, where we not only produce a full season of Foolish productions, but also serve as a rental house. We're committed to developing risky new work and being an active participant in our community.

**ORIGINAL 2019 PRODUCTION CREDITS**

Assistant Director ..... Alicia Rock  
 Artistic Directors..... Scott Leggett, Bryan Bellomo  
 Program/Poster Artwork ..... Katelyn Schiller  
 Ear Construction ..... Joyce Hutter

**SPECIAL THANKS**

Kenny Harris, Tim Hamelen, Phil Hendricks, Laura Schein, Alicia Rock, Patrick Duffy, Corey Klemow

**SACRED FOOLS THEATER COMPANY STAFF**

Artistic Directors..... Aviva Pressman, Adriana Colón  
 Vanessa Stewart  
 Managing Director ..... Padraic Duffy  
 Production Manager ..... Heatherlynn Gonzalez  
 Director of Development ..... Emily Kosloski  
 Publicity/Marketing... Scott Golden, Paul Plunkett, JJ Mayes  
 Literary Manager ..... Jacob Sydney  
 Outreach Coordinator ..... Crystal Keith

**SACRED FOOLS THEATER COMPANY BOARD OF DIRECTORS**

Bruno Oliver  
 John Sylvain  
 Paul Plunkett  
 Brian Finkelstein  
 David Baron  
 Jessica Sherman



Presents the **iama** production of

# CANYON

Written by

**Jonathan Caren**

With (in alphabetical order)

**Dahlia** ..... STEFANIE BLACK  
**Rodrigo** ..... LUCA ORIEL  
**Eduardo** ..... GEOFFREY RIVAS  
**Will** ..... BRANDON SCOTT  
**Jake** ..... ADAM SHAPIRO  
**Beth** ..... CHRISTINE WOODS

Scenic Design

**Daniel Soule**

Costume Design

**Melissa Trn**

Lighting Design

**R. S. Buck**

Sound Design

**Jeff Gardner**

Prop Consultant

**Michael O'Hara**

Center Theatre Group  
Associate Artistic Director

**Lindsay Allbaugh**

Production  
Stage Manager

**Robert Mahaffie**

Stage Manager

**Lucy Houlihan**

Original Direction by

**Whitney White**

Staged for the Kirk Douglas Theatre by

**Colleen Labella**

*Canyon* is performed without an intermission.

**APRIL 8–19, 2020 KIRK DOUGLAS THEATRE**

Originally produced in association with Latino Theater Company

Block Party receives major support from Aliza Karney Guren and Marc Guren with generous funding also provided by Joni and Miles Benickes, and additional support provided by Kiki and David Gindler.

# WHO'S WHO



**STEFANIE BLACK** (*Dahlia*). Founding member/Co-Artistic Director for IAMA Theatre Company. TV: *AHS: 1984* (FX), *Station 19* (ABC), *This Is Us* (NBC), *Scandal* (ABC), *Making History* (FOX), *Casual* (Hulu), *Disjointed* (Netflix), and others. Film: *Psycho Party Planner* (Ninth House Films), *Adult Interference*, *The Way You Look Tonight*. Theatre: *Canyon* (IAMA), *Bachelorette* (IAMA), *Assistance* (IAMA), *My Renaissance Faire Lady* (Ontological-Hysterical/Rattlestick), *Ubu the King* (Williamstown Theatre Festival), *Bush Is Bad: Alaskan Beauty Queen Edition* (Noho Arts Center, LA Weekly Award). NYU Tisch. Many thanks to my partner in crime, Katie, as well as Lara, Margaux, Cymbre, and Christian. Love you Alex! [thestefblack.com](http://thestefblack.com)



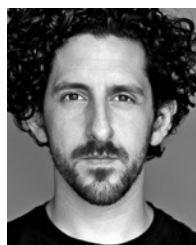
**LUCA ORIEL** (*Rodrigo*). At age 12, Luca made his stage debut in the Playwrights' Arena/Latino Theater Company production of *Sick*. Ten years later, he returned to LATC in the World premiere of *Canyon*. Film: starring roles in *Devil's Whisper* and *Calloused Hands*, for which he won a Best Actor Award at the Golden Door Film Festival, and *Wake*, *Lower Learning*, and *Quetzal*. TV: recurring as Derek on *Shameless* (Showtime) and *All Rise* (CBS), *Shooter* (USA Network), and *Bucket & Skinner's Epic Adventures* (Nickelodeon), plus commercials for Honda, Mattel, Lego, Amtrak, and a national campaign for the American Cancer Society. A songwriter and rapper, he is awaiting the release of his debut album *Only In The Hills* as St. Luc.



**GEOFFREY RIVAS** (*Eduardo*). Actor/producer/director. A native Californian and UCLA graduate, he has performed at the Los Angeles Theatre Center in all of Latino Theater Company's productions and is a founding member. Film credits include *Walk of Shame*, *Under the Tuscan Sun*, *Dragonfly*, *Luminarias*, *La Bamba*, *Born in East L.A.*, *Bound by Honor*, and *Foto-Novelas* for PBS, for which he won an ALMA Award; more television credits on IMDB. His directorial debut, Jozanne Marie's *Beautiful*, won her an NAACP Award. His collaboration on *The Latina Christmas Special* also received critical acclaim and just came off a very successful run Off-Broadway at the SoHo Playhouse last year. His latest show *Home* just closed to rave reviews.



**BRANDON SCOTT** (*Will*) was raised in Tuscaloosa, Alabama, and graduated from NYU Tisch School of the Arts. Scott recurs on Netflix's *13 Reasons Why* and NBC's *This is Us*, and recently starred in the Netflix hit *Dead to Me*, the CBS All Access series *Strange Angel*, SyFy's *Channel Zero*, and Showtime's critically acclaimed limited series *Guerrilla*. Next catch him in the upcoming fourth and final season of Amazon's popular legal drama *Goliath*. Brandon is a founding member of L.A. theatre companies IAMA and AMMO. He produces music under the pseudonym Icarus V, and has a band called Verbal + Icarus. @brandonoscott



**ADAM SHAPIRO** (*Jake*). Broadway: Ogie in *Waitress*. Co-founder of IAMA Theatre Company. Other stage credits include Jonathan Caren's *The Recommendation*, *Rent*, the World premieres of Leslye Headland's *Bachelorette* and *Assistance*, Paul Grellong's *Manuscript*. On screen, Adam is known for playing Joel on Showtime's *The Affair*, and will soon be seen in Showtime's *The Good Lord Bird* opposite Ethan Hawke and David Fincher's *Mank* and Mindy Kaling's *Never Have I Ever*, both for Netflix. More TV/film: *Steve Jobs*, *It Happened in L.A.*, *Ode to Joy*, *Short Term 12*, *Sense8*, *Now You See Me*, *A Single Man*, *Scandal*, *Grey's Anatomy*.



**CHRISTINE WOODS** (*Beth*). Proud member of IAMA Theatre Company! TV: *Briarpatch* (USA), *Grace and Frankie* (Netflix), *Room 104* (HBO), *Hello Ladies* (HBO), *Brockmire* (USA), *The Walking Dead* (AMC), *About a Boy* (NBC), *Go On* (NBC), *Perfect Couples* (NBC), *Flashforward* (ABC), *Stumptown* (ABC), *Man with a Plan* (CBS), *The Odd Couple* (CBS). Film: *Blush* (Gravitas), *I Don't Feel at Home in This World Anymore* (Netflix), *Paddleton* (Netflix), *Handsome* (Netflix). Stage: Leslye Headland's *Cult of Love* (IAMA co-World premiere), *A Dog's House* (IAMA). Thanks & love to my IAMA family, my soon-to-be husband Jon, and our fur babies!

**JONATHAN CAREN** (*Playwright*). Plays include *The Recommendation* (Windy City, IAMA, The Flea, Old Globe), *Need to Know* (Rogue Machine), and *Four Woke Baes* (Edinburgh Fringe). He's developed works at theatres such as EST, Williamstown, Ars Nova, MTC, Roundabout, Rattlestick, and The New Group. Member of Center Theatre Group's 2020 L.A. Writers' Workshop, MacDowell Colony fellow, and Dramatists Guild fellow. Craig Noel Award for Best New Play and Ovation Award



winner (*The Recommendation*). A graduate of The Juilliard School and Vassar College. He currently works on USA's third season of *The Sinner*.

**WHITNEY WHITE** (*Original Direction*). Recent work: *Our Dear Dead Drug Lord* (WP Theater and Second Stage, *New York Times* Critic's Pick), *The Amen Corner* (Shakespeare Theatre D.C.), *A Human Being, of a Sort* (Williamstown Theatre Festival, with Frank Wood and Andre Braugher), *What to Send Up When It Goes Down* (The Movement, *New York Times* Critic's Pick), *Jump* (Rolling NNP World Premiere, PlayMakers Rep), and *This Land Was Made* (Vineyard Theatre Lab). Her original piece *Macbeth In Stride* was part of the Under the Radar Festival at The Public and will premiere at the American Repertory Theater. Her original musical *Definition* is in development with the Bushwick Starr. Current recipient of the Susan Stroman Directing Award and an Associate Artist at Roundabout Theatre.

**COLLEEN LABELLA** (*Kirk Douglas Theatre Staging*) is a Los Angeles-based director who focuses her work on women and the LGBT experience. Directing credits include *a journey through minimalism* at the Walt Disney Concert Hall featuring the LA Philharmonic, *Lincoln 2020* for the Hollywood Fringe Festival, and an LGBT retelling of *Almost, Maine* with Four Walls and a Stage. Associate/assistant director: Geffen Playhouse and Connecticut Repertory Theatre. Colleen works for writer/director Leslye Headland. She holds her BFA from the University of Connecticut and trained at NYU Tisch's Experimental Theatre Wing. Her short film *Boiling Point* was featured at the Culver City Film Festival. @colleenlabela

**DANIEL SOULE** (*Scenic Designer*) is a scenic and production designer based in downtown Manhattan. Recent projects include *The Amen Corner* (Shakespeare Theatre Co.), *for all the women who thought they were Mad* (Soho Rep), and the silent short film *Until Next Time*. Daniel was design associate for *Camp: Notes on Fashion* at the Metropolitan Museum of Art, and is on the faculty of NYU Tisch Drama's Production & Design Studio. danielsouledesign.com

**MELISSA TRN** (*Costume Designer*) is thrilled to be joining IAMA again after designing *A Kid Like Jake*, *American Hero*, *Cult of Love*, *Redline*, *Sinner's Laundry*, *Species Native to California*, and *The Recommendation*. Other credits include *Sisters in Law* (The Wallis), *Our Country* (The Wilderness, Getty Villa/Broken Flowers/Under the Radar/Edinburgh Fringe), *The Trojan Women: After Euripides* (BAM/SITI Company/Getty Villa) *Antigone* (SITI Company), *Dance Nation* and *The Roommate* (San Francisco Playhouse), *Future Thinking* (South Coast

Rep), *Twelfth Night* (Asolo Rep), *39 Steps* (Triad Stage), *Roller Disco* (ART), *Richard II* (Yale Rep), *The Me Nobody Knows* (Black Rep, St. Louis), as well as over 10 years of productions for Telluride Theatre in Colorado where Melissa is an Associate Artist. MFA: Yale School of Drama.

**R. S. BUCK** (*Lighting Designer*) is an L.A.-based international designer and manager for theatre, dance, opera, music, and multimedia art installations. Int'l: *Brecht* (BE Moving, Tel Aviv), *Antigone* (Yin Mei Dance, China), *¡Anarchist!* (Little Green Pig Theatrical Concern, Mexico). In L.A.: *Cages* (Woolf and the Wondershow), *Formulae & Fairy Tales* (Invertigo Dance Theatre), *Mama Metal* (IAMA Theatre Company), *Ínsula* (The Useless Room), *Breath + Body* (C3LA & IRIS Company), *Machines and Strings* (Isaura Quartet). Buck is production manager and production designer for the In[heir]itance Project. They have their MFA from California Institute of the Arts.

**JEFF GARDNER** (*Sound Designer*) is excited to be back for Block Party 2020. He was here previously on *Native Son* with Antaeus Theatre Company as well as *Dry Land* for Echo Theater Company. Other credits include *Cry It Out* for Echo Theater Company (Ovation Award—Best Production, 2018), *Trevor* for Circle X Theatre (Ovation Award—Best Production, 2015), and *The Recommendation*, also for IAMA Theatre (Ovation Award—Best Production, 2014). He has designed and performed throughout the country including at Pasadena Playhouse, Shakespeare Theatre (D.C.), Studio Theatre (D.C.), Geffen Playhouse, The Kennedy Center, Williamstown Theatre Festival, and Edinburgh Fringe Festival. jeffthomasgardner.net

**MICHAEL O'HARA** (*Prop Consultant*) is excited to be a part of his fourth Block Party. He was the original props designer for *Failure: A Love Story* (2017), *Die, Mommie, Die!* (2018), and *Rotterdam* (2019). A freelance props designer, his work has appeared onstage at Celebration Theatre, Circle X, East West Players, the Blank, Theatre of NOTE, Coeurage Theatre, The Road Theatre, the Garry Marshall, Skylight, IAMA Theatre, Sacred Fools, the Odyssey, and Artists at Play, to name a few. He also holds a management position at Celebration Theatre.

**ROBERT MAHAFFIE** (*Production Stage Manager*) is an accomplished filmmaker, theatre designer, and aerial cinematographer who loves to work on a variety of projects across film, theatre, and television with recent credits including stage managing IAMA Theatre Company's *Canyon* (2019); serving as production designer on *Becoming Alive* (short), *Funny Runs* (short), and *Brash Boys Club* (comedy special); and producing films including the shot-in-Alaska *what we find in the sea* (short), *Black Flag* (short that won an AT&T Film

Award), *July Rising* (feature that premiered at the Sonoma International Film Festival), and *On Track* (short doc that aired on Rocky Mountain PBS).

**LUCY HOULIHAN** (*Stage Manager*) is a stage manager, director, and producer in Los Angeles. Most recently, she stage managed *A Kid Like Jake* at Pasadena Playhouse with IAMA Theatre Company, was a stage manager PA for *Hamlet the Rock Musical* at El Portal Theatre, and stage managed several script workshops with the Geffen Playhouse. Before moving to L.A., she received an undergraduate degree from Colorado College's theatre and dance program, where she wrote and directed an original play for her thesis, directed *Rabbit Hole* (2016), and co-directed *Yellow Face* (2017). She's a multifaceted artist whose work focuses on presenting diverse, issue-based perspectives.

**IAMA THEATRE COMPANY.** Now in its 12th season, IAMA is an Ovation Award-winning Los Angeles-based ensemble of artists committed to invigorating live performance for a streaming generation. Through cutting-edge, cool, and hyper-modern stories, IAMA is invested in the immediacy of production and strives to bring audiences out of their personal space and into a shared experience. In addition to the World premieres of all seven of Leslye Headland's *The Seven Deadly Plays*, IAMA has produced over 15 premiere plays, garnering multiple awards and nominations, including *FOUND: A New Musical*, *Shiner*, *A Dog's House*, *Do Like The Kids Do*, *Mama Metal*, *Canyon*, *The Recommendation*, *Sixty Miles To Silverlake*, *Redline*, *Sinner's Laundry*, *Species Native to California*, *American Hero*, *Unbound*, and *A Kid Like Jake*.

Originally produced in association with **LATINO THEATER COMPANY.** Latino Theater Company was founded in 1985 with the goal of establishing a theatre company dedicated to contributing new stories and novel methods of expression for the American theatre repertoire, and to increase artistic opportunities for underserved communities. Latino Theater Company explores the US Latinx experience in bold and contemporary terms, and programs our seasons at the Los Angeles Theatre Center with work that speaks to important issues and highlights new voices within the Latinx, African American, Asian American, Native American, Jewish American, and LGBTQ communities.

**ADDITIONAL STAFF FOR CANYON**

Associate Scenic Designer..... Ryan Wilbat

**ORIGINAL 2019 PRODUCTION CREDITS**

Producer..... Patti Miller  
Associate Producer ..... Holiday Kinard

**SPECIAL THANKS**

Adrea Caren, Adrienne Campbell-Holt, Ally Shuster, Amdie Mengistu, Anna Rose Hopkins and Hank and Bean, Atwater Village Theater, Bernardo Cubria, CAA, Carolyn Cantor, Danny Goldstein, Diane Rodriguez, Elana Barry, Elisabeth Caren, Jaime Casteneda, Janice White, John Lavelle, Kevin Lin, The Latino Theater Company/Jose Luis Valenzuela, Laura Savia & the Williamstown Theatre Festival, Matthew Paul Olmos, Meghan Kennedy, Rachel Viola, Space @ Ryder Farm, The Echo Theater Company, Tyne Rafeli, Weyni Mengesha

**IAMA THEATRE COMPANY LEADERSHIP/ADMINISTRATION**

Co-Artistic Directors ..... Stefanie Black and Katie Lowes  
Managing Director .....Lara Myrene  
Producing Director ..... Cymbre Walk Sklar  
Associate Artistic Director/Social Media Manager ..... Margaux Susi  
Associate Artistic Director ..... Christian Durso  
Marketing Director ..... Adam Shapiro  
Associate Literary Manager ..... Anna LaMadrid

**IAMA THEATRE COMPANY BOARD OF DIRECTORS**

Katie Lowes, Chair  
Tyler Ennis, President  
David Yanni, Secretary  
Victoria Lerner, Treasurer  
Jana Bezdek  
Mike Jackson  
Graham Sibley

**ADDITIONAL STAFF FOR BLOCK PARTY**

Carpenters..... Eduardo Fernandez-Baumann, Ryan Fischer, Joseph Flores, Bo Foxworth, Curt Gavin, Melissa Hartman, Ryan Howard, Joe Kidawski, Melissa Lubina  
Scenic Painter Charge..... Erin Walley  
Lead Scenic Painter ..... Orlando de la Paz  
Scenic Painter..... Patrick Green  
Electricians ..... Shara Abvabi, Kris Addix, Shannon Barondeau, Lunch Box, Jenisse Castillo, Candace Dovie, Eduardo Fernandez-Baumann, Brian Guy, Diana Herrera, Mary Keegan, Leo Korf, Juan Lozano, Sara Nishida, Taylor Shaw, Sakura Umezawa  
Light Board Programmer ..... Alex Fasciolo  
Resident Assistant Lighting Designers ..... Briana Pattillo, Shannon Barondeau  
Watchout Programmer/Video Engineer ..... Erin Teachman  
Prop Lead.....Eric Babb  
Block Party Production Coordinator .....Brooke Baldwin



## CONCIERGES

Trevor Algatt, Hanna Anderson, Bradford Barnes, Lily Brown, Fallon Christian, Eric Eberle, Amber Espinosa-Jones, Yanki Evliyaoglu, Abbey Fenbert, Jill Galbraith, Angela Garcia, Dean Grosbard, Elliott Hanson, Ren Harris, Henry Kelly, Heather Klinke, Natasha LaGrone, Noah Lashly, Sophia Lewis, Stephen Lydic, Rachael McNamara, Sean McSweeney, Rachel McVay, Janice Motuapuaka, Shawn Nabors, Nicole Naito, Twon Pope, Tessa Rao, Denise Reynoso, Hayley Samartin, Sam Sherry, Michayla Van Treeck

## ASSISTANT HOUSE MANAGERS

Chase Anderson-Shaw, Olivia Choate, Adrienne Marquand, AJ Meijer, Tarah Pollock

## DISCUSSION FACILITATORS

Johnathon Jackson  
Isabella Petrini  
Eduardo Fernandez-Baumann

## CREDITS

Production photography by Craig Schwartz.

---

## CENTER THEATRE GROUP

**MICHAEL RITCHIE** (*Artistic Director*) is in his 15<sup>th</sup> season as Center Theatre Group's Artistic Director, and has led over 200 productions to the Ahmanson Theatre, Mark Taper Forum, and Kirk Douglas Theatre stages, including the premieres of six musicals that moved to Broadway—*The Drowsy Chaperone*, *Curtains*, *13, 9 to 5: The Musical*, *Bloody Bloody Andrew Jackson*, and *Leap of Faith*—and the Pulitzer Prize in Drama finalist *Bengal Tiger at the Baghdad Zoo*.

**MEGHAN PRESSMAN** (*Managing Director*) joined Center Theatre Group as Managing Director in 2019. Previously, she served as Managing Director of Woolly Mammoth Theatre Company (D.C.), Director of Development for Signature Theatre (N.Y.), and Associate Managing Director of Berkeley Rep, in addition to working at numerous other theatre and arts organizations across the country. She is the Vice-Chair of the National Board for the Theatre Communications Group (TCG).

**DOUGLAS C. BAKER** (*Producing Director*) is now in his 30<sup>th</sup> season at Center Theatre Group. He is an active member of the Broadway League, the Independent Presenters Network, and is a proud member of the Association of Theatrical Press Agents and Managers. In May 2013, Doug received the Broadway League's prestigious Outstanding Achievement in Presenter Management Award.

**LINDSAY ALLBAUGH** (*Associate Artistic Director*) is a member of Center Theatre Group's artistic staff and has served in varying capacities for the past 15 years. Selected producing credits include— Mark Taper Forum: *Archduke*, *Bent*, *What the Butler Saw*, *Steward of Christendom*, *Waiting for Godot*; Kirk Douglas Theatre: *Block Party*, *Big Night*, *Good Grief*, *Vicuña*, *Throw Me On the Burnpile* and *Light Me Up*, *Endgame*, *Women Laughing Alone With Salad*, *Chavez Ravine*, *Race*, *different words for the same thing*, *The Nether*. Co-Artistic Director of the Elephant Theatre 2004–2014.

**NAUSICA STERGIU** (*General Manager*) has worked supporting artists in theatres of all shapes, sizes, and locales including Center Theatre Group as General Manager and, previously, as Audience Development Director. She oversees productions at the Taper and Douglas, as well as new play commissions and developmental productions. Nausica has taught at USC's School of Dramatic Arts and works with local nonprofits including Hollywood Orchard.

**GORDON DAVIDSON** (*Founding Artistic Director*) led the Taper throughout its first 38 seasons, guiding over 300 productions to its stage and winning countless awards for himself and the theatre—including the Tony Award for theatrical excellence, Margo Jones Award, The Governor's Award for the Arts, and a Guggenheim fellowship. *The Kentucky Cycle* and *Angels in America (Part One)* won the Pulitzer in consecutive years and, in 1994, three of the four plays nominated for the Tony Award for Best Play were from the Taper (*Angels in America* won). In 1989, Gordon took over the Ahmanson and, in 2004, he produced the inaugural season in the Kirk Douglas Theatre.

### ONLINE

Center Theatre Group [#CTGLABlockParty](#)  
Like us on Facebook [Center Theatre Group](#)

Follow us on Twitter [@CTGLA](#)  
Subscribe on YouTube [CTGLA](#)  
Follow us on Instagram [@CTGLA](#)



The Actors and Stage Managers employed in this production are members of Actors' Equity Association, the Union of Professional Actors and Stage Managers of the United States. This theatre operates under an agreement between the League of Resident Theatres and Actors' Equity Association, the Union of Professional Actors and Stage Managers in the United States.



The Directors are members of the Stage Directors and Choreographers Society, Inc., an independent national labor union.



Center Theatre Group is a member of the League of Resident Theatres (LORT), the American Arts Alliance, the Broadway League, Independent Producers' Network (IPN), LA Stage Alliance, National Alliance for Musical Theatre (NAMT) and the Theatre Communications Group (TCG).

Center Theatre Group would like to thank its exceptional staff for their ongoing commitment, dedication, and extraordinary efforts.

## ARTISTIC

LINDSAY ALLBAUGH\* ..... Associate Artistic Director  
NEEL KELLER\* ..... Associate Artistic Director/Literary Director  
KELLEY KIRKPATRICK\* ..... Associate Artistic Director  
PATRICIA GARZA\* ..... Line Producer, Special Artistic Projects  
MICHAEL DONOVAN CASTING ..... Casting Consultant  
SUZANNE HEE MAYBERRY ..... Casting Coordinator  
TIFFANY SLAGLE ..... Literary Assistant  
MATTHEW BOURNE, DANAI GURIRA,  
ANNA D. SHAPIRO ..... Associate Artists

MAT DIAFOS SWEENEY ..... Sherwood Award Recipient, 2020

## EDUCATION, ENGAGEMENT, AND COMMUNITY PARTNERSHIPS

KATHRYN MACKENZIE ..... Director of Administration  
TYRONE DAVIS ..... Audience Engagement Director  
TRACI KWON\* ..... Arts Education Initiatives Director  
JESUS REYES\* ..... Community Partnerships Director  
CAMILLE SCHENKKAN ..... Next Generation Initiatives Director  
CARLA JACKSON ..... Program Manager  
JAQUELYN JOHNSON ..... Audience Engagement Manager  
FELIPE M. SANCHEZ ..... Emerging Artists and  
Arts Professionals Program Manager  
AURORA ILOG ..... Administrative Assistant  
ESTELA GARCIA ..... Resident Teaching Artist  
DEBRA PIVER\* ..... Resident Teaching Artist

## MANAGEMENT AND ADMINISTRATION

NAUSICA STERGIUO\* ..... General Manager  
JEFFREY UPAH\* ..... General Manager  
KATIE SOFF\* ..... Associate General Manager  
ERIC SIMS\* ..... Associate General Manager  
MEGAN AARON ..... Company Manager & Assistant General Manager  
KEVIN JOHNSON ..... General Management Associate  
LISA D. RICHARDSON ..... Manager, Executive Office  
ALANA BEIDELMAN\* ..... Executive Assistant to the Artistic Director

## PRODUCTION

JOE HAMLIN\* ..... Director of Production  
KRISTIN MATSUMOTO ..... Production Manager  
CHRISTOPHER REARDON ..... Production Manager  
KATIE CHEN ..... Assistant Production Manager  
ERIN TIFFANY ..... Assistant Production Manager  
BROOKE BALDWIN ..... Interim Production Coordinator  
SHAWN ANDERSON\* ..... Head Carpenter (Ahmanson Theatre)  
SCOTT LUCAS ..... Head Properties (Ahmanson Theatre)  
JAMES WRIGHT ..... Head Electrician (Ahmanson Theatre)  
ROBERT SMITH\* ..... Head Sound (Ahmanson Theatre)  
SHANE ANDERSON ..... Head Flyrail (Ahmanson Theatre)  
MICHAEL GARDNER\* ..... Wardrobe Supervisor (Ahmanson Theatre)  
MARY WARDE ..... Hair and Make-up Supervisor  
(Ahmanson Theatre)  
CHRISTINE L. COX\* ..... House Manager (Ahmanson Theatre)  
EMMET KAISER ..... Head Carpenter (Mark Taper Forum)  
MARY ROMERO ..... Head Properties (Mark Taper Forum)  
AARON STAUBACH\* ..... Head Electrician (Mark Taper Forum)  
BONES MALONE\* ..... Head Sound (Mark Taper Forum)  
DENNIS SEETOO\* ..... Wardrobe Supervisor (Mark Taper Forum)  
RICK GEYER\* ..... Hair & Make-up Supervisor (Mark Taper Forum)  
LADA WALKER\* ..... House Manager (Mark Taper Forum)  
ADAM PHALEN\* ..... Head Audio (Kirk Douglas Theatre)  
SEAN MEYER ..... Head Electrician (Kirk Douglas Theatre)  
CAMBRIA CHICHI ..... Wardrobe Supervisor (Kirk Douglas Theatre)  
BEN GRAY ..... Stage Supervisor (Kirk Douglas Theatre)

CHAD SMITH\* ..... Technical Director  
LEE O'REILLY ..... Associate Technical Director  
CHLOE JOY ..... Assistant Technical Director  
SEAN KLOC ..... Shop Supervisor  
MERRIANNE NEDREBERG\* ..... Prop Director  
KATE REINLIB ..... Associate Prop Manager  
ERIC BABB ..... Assistant Prop Shop Manager  
ERIN WALLEY ..... Assistant Prop Lead  
CANDICE CAIN\* ..... Costume Director  
BRENT M. BRUIN ..... Costume Shop Manager  
MADDIE KELLER ..... Costume Generalist  
WHITNEY OPPENHEIMER ..... Resident Assistant Costume Designer  
KAT PATTERSON ..... Resident Assistant Costume Designer  
SWANTJE TUOHINO\* ..... Tailor

## OPERATIONS

DAWN HOLISKI\* ..... Director of Operations and Facilities  
PETER WYLIE ..... Operations Manager  
ELIZABETH LEONARD ..... Senior Facilities Manager  
MAX OKEN ..... Facilities Manager  
SONDRA MAYER\* ..... Concessions Manager (Kirk Douglas Theatre)  
PRECIOUS ALFARO ..... Operations Coordinator  
NIKI ARMATO ..... Facilities Assistant  
JULIO A. CUELLAR\* ..... Facilities Assistant  
CURT GAVIN, JOE HALLAM, IRUNGU MUTU ..... Drivers

## FINANCE, INFORMATION TECHNOLOGY, AND HUMAN RESOURCES

CHERYL SHEPHERD ..... Chief Financial Officer  
SARAH STURDIVANT ..... Director of Finance and Technology  
SUZANNE BROWN ..... Contoller  
DANNY LAMPSON OPSTAD\* ..... Accounting Manager  
NAKISA ASCHTIANI ..... Senior Staff Accountant  
XOCHITL RAMIREZ ..... Accounts Payable Supervisor  
KERRY LARICK ..... Accounting Assistant  
JESSICA HERNANDEZ ..... Payroll Manager  
JUAN MARTINEZ ..... Payroll Specialist  
TOM MEGALE ..... Director of Business Applications  
JANELLE CABRERA TORRES ..... Senior Tessitura & Web Administrator  
MICHAEL J. PALERMO JR. ..... Systems Administrator  
CHIMA OMEAKU ..... Help Desk Support

JODY HORWITZ ..... Director of Human Resources  
P.J. PHILLIPS ..... Senior Human Resources Generalist  
MELISSA MCCAFFREY ..... Human Resources Generalist  
MOSS ADAMS ..... Auditor  
MICHAEL C. DONALDSON, LISA A. CALLIF ..... Legal Counsel  
GIBSON, DUNN & CRUTCHER ..... Legal Counsel

## INSTITUTIONAL ADVANCEMENT

YVONNE CARLSON BELL\* ..... Director of Institutional Advancement  
TYLER ENNIS ..... Deputy Director of Institutional Advancement  
JASON CABRAL ..... Director of Advancement Operations & Analytics  
LOUIE ANCHONDO ..... Director of Events & Corporate Relations  
ASHLEY TIERNEY ..... Director of the Annual Fund  
TERRA GOULDEN ..... Senior Major Gifts Officer  
LAURA HITE ..... Associate Director of Gift Operations & Reporting  
NIKKI MICHELA ..... Associate Director of Institutional Grants  
MANDI OR\* ..... Associate Director of Special Events  
RYAN WAGNER ..... Associate Director of Donor Data &  
Communication Strategy  
VANESSA WHEELER ..... Associate Director of Prospect Research  
MOLLY COTTEN ..... Major Gifts Officer  
PRIYA PATEL ..... Corporate Relations Officer  
SARAH RIDDLE ..... Annual Fund Manager  
ELIZABETH DELLORUSSO ..... Annual Fund Officer  
DONALD JOLLY\* ..... Advancement Communications Specialist  
PAULA MATA LLANA ..... Grant Writer  
PAUL MERCADO ..... Special Events Coordinator  
EDUARDO MOLLINADO-PIÑÓN ..... Advancement Database Analyst  
MIKE RATTERMAN ..... Donor Advisor Supervisor  
ERIC SEPPALA ..... Executive Assistant to the Director  
of Institutional Advancement  
OLIVIA BERUMEN ..... Advancement Operations Associate  
SOHINI RISAM ..... Institutional Advancement Assistant  
AL BERMAN\*, EARL KLASKY, VARTAN MERJANIAN, BENJAMIN SCHWARTZ,  
NICOLE SCIPIONE, VICTORIA SMITH, PAUL VITAGLIANO ..... Donor Advisors  
JESSICA ABROMAVICH, JUSTINE PEREZ\* ..... Donor Services Associates  
MURRAY E. HELTZER ..... Development Volunteer

## MARKETING

DEBORAH WARREN ..... Director of Marketing  
GARRETT COLLINS ..... Marketing Strategy Director  
KYLE HALL ..... Creative Director  
KIYOMI EMI\* ..... Senior Marketing Manager, Promotions & Events  
EMYLI GUDMUNDSON ..... Senior Marketing Manager, Creative Content  
MARIN ROBINSON ..... Senior Marketing Manager, Media  
MIMI RIOS ..... Marketing Coordinator  
CAROLINE THOMPSON/IMPACT 123 ..... Media Planning

DEANNA McCLURE ..... Art and Design Director  
IRENE T. KANESHIRO\* ..... Senior Design Manager  
SANDI SILBERT ..... Senior Designer  
TARA NITZ ..... Senior Designer  
JAVIER VASQUEZ ..... Senior Designer-Digital Specialist

## COMMUNICATIONS

JAMES SIMS ..... Director of Communications  
JASON MARTIN\* ..... Head of Publicity  
KRISTI AVILA ..... Publicist  
COURTNEY HEIMBUCK ..... Junior Publicist  
SARAH ROTHBARD ..... Associate Editorial Director  
TYLER EMERSON ..... Digital Product Manager  
MICAELA CUMMINGS ..... Social Media Specialist  
SYDNEY SWEENEY ..... Communications Coordinator  
HAL BANFIELD ..... Multimedia Producer

## TICKET SALES AND SERVICES

SHAWN ROBERTSON\* ..... Ticket Sales Director  
SKYPP CABANAS\* ..... Senior Manager, Ticket Operations  
NICOLE MEDINA ..... Ticket Operations Coordinator

MICHAEL ZOLDESSY ..... Senior Manager, Account Sales  
SANDY CZUBIAK\* ..... Audience and Subscriber  
Services Director

JENNIFER BAKER\*, CHERYL HAWKER\*,  
RICHARD RAGSDALE\* ..... Audience Services Supervisors  
ALICE CHEN\* ..... Audience Services Asst. Supervisor  
MICHAEL ESPINOZA, GARY HOLLAND ..... Audience Services Sales Associates  
SAM AARON\*, KIMBERLY ARENCIBIA, VICKI BERNDT, DAVID BETANCOURT,  
ALEJANDRA DE PAZ, JONATHAN FLORES, KAITLYN GALVEZ,  
ANASTASHIA GARCIA, ELIANA HERNANDEZ-FAUSTO, MICHAEL MUNOZ,  
CHRISTINE PEDROZA, EILEEN PEREZ,  
CHRISTIAN UNGER ..... Audience Services Representatives  
DANUTA SIEMAK\* ..... Subscriber Services Supervisor  
CHRISTINA GUTIERREZ\* ..... Subscriber Services Asst. Supervisor  
IRENE CHUANG\*, LIGIA PISTE\*, PETER STALOCH\* ..... Subscriber Services  
Senior Representatives

SARAH K. GONTA\* ..... Box Office Treasurer  
ANGELICA CARBAJAL\*, MICHAEL VALLE\* ..... Assistant Treasurers  
KEANA JACKSON, MICHAEL KEMPISTRY\*,  
KEVIN LAUVER, CRIS SPACCA ..... Box Office Staff

KERRY KORF\* ..... Priority Services Director  
CANDICE WALTERS ..... Priority Services Senior Sales Manager  
PAUL CUEN\*, KRISTEN SCHRASS ..... Priority Services Managers  
SOFIJA DUTCHER ..... Priority Services Assistant Supervisor

BEAELNE AHERN, REBEKAH BOROUGHS, CLAY BUNKER, KORAMA DANQUAH,  
MAGGIE DODD, NATALIE DRESSSEL, MARC "BYRON" DROTMAN\*, FRANK  
ENSENBERGER, LOU GEORGE\*, BRAD GRIFFITH, KATHLEEN LITTLEFIELD,  
SHEP KOSTER\*, THIEN NGUYEN, JULIANNA OJEDA, IAN PRICE,  
DIANE WARD, JOE WEBSTER ..... Priority Services Representatives

EDGAR BUSTILLO, MARISA CADDICK, AMBER CHAVEZ, MARY ALEX DANIELS,  
JAMAE ERWING, AARON ESPINOSA, FRANKLIN HANSEN, DAVID JIMENEZ,  
CHRISTA MCGOWAN, KIMBERLY SANCHEZ, JESSICA SLAYDON, SAKURA  
UMEZAWA ..... Interns & Apprentices

GILBERT DELEON, SOFIA LUGO, QUINN O'CONNOR, ANASTASIA PEREZOVA,  
\*On staff for 10+ years.

## ARTISTIC DEVELOPMENT & COMMISSIONS

As part of our commitment to supporting a new generation of playwrights, we foster and develop a broad range of theatrical work from artists within the diverse communities of Los Angeles as well as from across the nation and abroad.

Artists **creating new work commissioned** by Center Theatre Group this season:

DAVID ADJMI	ALESHEA HARRIS	TREY LYFORD	GEOFF SOBELLE
JON ROBIN BAITZ	RAJIV JOSEPH	JANINE NABERS	LUIS VALDEZ
STEVE CUIFFO	LISA KRON	QUI NGUYEN	PAULA VOGEL
LISA D'AMOUR	KIMBER LEE	LYNN NOTTAGE	TRACEY SCOTT WILSON
WILL ENO	YOUNG JEAN LEE	MARCO RAMIREZ	KAREN ZACARIAS
JENNIFER HALEY	MATTHEW LOPEZ	SARAH RUHL	

Since 2005, we have invited local playwrights to spend a year researching and writing a new work with the feedback of their fellow writers and artistic staff as part of our **L.A. Writers' Workshop**. Our growing community currently contains 103 playwrights. 2019/20 Season members:

ADELINA ANTHONY	DIONNA MICHELLE DANIEL
NGOZI ANYANWU	BOO KILLEBREW
JONATHAN CAREN	KENNETH LIN
	KEMP POWERS

Learn more at [CTGLA.org/Artists](http://CTGLA.org/Artists).